



Art's-Way Manufacturing Co., Inc.

Model 166
Moldboard Plow

Illustrated Parts Catalog
520300

Issued February 2004

ILLUSTRATED PARTS CATALOG



This symbol means ATTENTION! BECOME ALERT! YOUR SAFETY IS INVOLVED. The message that follows the symbol contains important information about your safety. Carefully read the message. Make sure you fully understand the causes of possible injury or death.

IF THIS MACHINE IS USED BY AN EMPLOYEE, IS LOANED, OR IS RENTED, MAKE SURE THAT THE OPERATOR UNDERSTANDS THE TWO INSTRUCTIONS BELOW.

BEFORE THE OPERATOR STARTS THE ENGINE:

1. GIVE INSTRUCTIONS TO THE OPERATOR ON SAFE AND CORRECT USE OF THE MACHINE.
2. MAKE SURE THE OPERATOR READS AND UNDERSTANDS THE OPERATOR'S MANUAL FOR THIS MACHINE.

WARNING

IMPROPER OPERATION OF THIS MACHINE CAN CAUSE INJURY OR DEATH.

BEFORE STARTING THE ENGINE, DO THE FOLLOWING:

1. READ THE OPERATOR'S MANUAL.
2. READ ALL SAFETY DECALS ON THE MACHINE.
3. CLEAR THE AREA OF OTHER PERSONS.

LEARN AND PRACTICE SAFE USE OF MACHINE CONTROLS IN A SAFE AND CLEAR AREA BEFORE YOU OPERATE THIS MACHINE ON A JOB SITE.

It is your responsibility to observe pertinent laws and regulations and to follow manufacturer's instructions on machine operation and maintenance.

See your Authorized Art's-Way Manufacturing Co., Inc. dealer or Art's-Way Manufacturing Co., Inc. for additional operator's manuals, illustrated parts catalogs, and service manuals.

TO THE OWNER

Congratulations on the purchase of your new Art's-Way 166 Moldboard Plow. You have selected a top quality machine that is designed and built with pride to ensure you have many years of efficient and reliable service.

Many people have worked on the design, production, and delivery of this harvester. The information in this Manual is based on the knowledge, study, and experience through years of specializing in the manufacturing of farm machinery. This Manual is designed to provide you with important information regarding safety, maintenance, and machine operation so you can and will get the best possible performance from your 166 Moldboard Plow.

Even if you are an experienced operator of this or similar equipment, we ask that you read this manual before operating this harvester. The way you operate, adjust, and maintain this unit will have much to do with its successful performance. Any further questions you may have about this product of Art's-Way equipment should be directed to your local Art's-Way dealer or to Art's-Way Manufacturing Co., Inc., Armstrong, Iowa, 50514, (712) 864-3131.

Specification And Design Are Subject To Change Without Notice

Art's-Way Manufacturing Co., Inc. is continually making product improvements. In doing so, we reserve the right to make changes and/or add improvements to our products without obligation for the equipment previously sold. Modifications to this 166 Moldboard Plow may effect the performance, function, and safety of its operation. Therefore, no modification are to be made without the written permission of Art's-Way Manufacturing Co., Inc. Any modification made without the written permission of Art's-Way Mfg. Co. shall void the warranty of this product. In the interest of continued safe operation of this 166 Moldboard Plow, pay particular attention to the safety alert symbol(s) throughout this Manual.

Art's-Way Manufacturing Co., Inc. Statement Of Product Liability

Art's-Way Manufacturing Co., Inc. recognizes its responsibility to provide customers with a safe and efficient product. Art's-Way Manufacturing Co., attempts to design and manufacture its products in accordance with all accepted engineering practices effective at the date of design. This statement should not be interpreted to mean that our products will protect against the user's own carelessness or failure to follow common safety practices nor will Art's-Way Manufacturing Co., be liable for any such act. In addition, Art's-Way Manufacturing Co., assumes no liability for any altered.

Important Warranty Information

The warranty for this 166 Moldboard Plow appears on page iii of this Manual. In order to establish proper warranty registration, the Warranty Registration and Dealer Pre-Delivery Checklist must be completed and returned to the factory. Failure to comply with this requirement may result in reduced warranty allowances.

Limitations Of This Manual

This Manual contains operating instructions for your 166 Moldboard Plow only. Any mention of other machinery in this manual other than the 166 Moldboard Plow is for reference only. This manual does not replace nor is it to be used for any machinery that may be attached to or used in conjunction with the 166 Moldboard Plow.

PARTS & SERVICE

As the new purchaser of your 166 Moldboard Plow, it is very important to consider the following factors:

- A. Original Quality
- B. Availability of Service Parts
- C. Availability of Adequate Service Facilities

Art's-Way Manufacturing Co., Inc. has an excellent dealership network ready to answer any questions you may have about your Moldboard Plow. Parts for your machine may be ordered through our dealers. When placing a parts order, please have the **model** and **serial number** ready. This will allow the dealer to fill your order as quickly as possible.

For your convenience, we have provided this space for you to record your model number, serial number, and the date of purchase, as well as your dealer's name and address.

Owner's Name: _____

Owner's Address: _____

Purchase Date: _____

Dealership Name: _____

Dealership Address: _____

Dealership Phone No.: _____

Machine Serial Number

Enter the serial number and model number of your 166 moldboard plow in the space provided above.

	
SERIAL NO.	<input type="text"/>
MODEL NO.	<input type="text"/>
Manufactured By Art's-Way Manufacturing Co., Inc. Armstrong, LA	

Limited Warranty

Art's-Way Manufacturing Co., Inc. warrants the products it sells to be free from defects in material and workmanship for a period of one (1) year after the date of delivery to the first (original) purchaser, subject to the following conditions:

- Art's-Way Manufacturing Co., Inc. obligation and liability under this warranty is to repair or replace (at the company's option) any parts that upon manufacture were defective in material or workmanship.
- All parts and repairs under this warranty shall be supplied at Art's-Way Manufacturing Co., Inc. or an authorized Art's-Way Manufacturing Co., Inc. dealer, at the option of Art's-Way Manufacturing Co., Inc.
- Art's-Way Manufacturing Co., Inc. warranty does not extend to parts and elements not manufactured by Art's-Way Manufacturing Co., Inc. and which carry the warranty of other manufacturers.
- Transportation or shipping to an authorized dealer for necessary repairs is at the expense of the purchaser.
- Art's-Way Manufacturing Co., Inc. makes no other warranty expressed or implied and makes no warranty of merchantability or fitness for any particular purpose beyond that expressly stated in this warranty. Art's-Way Manufacturing Co., Inc. liability is limited to the terms set forth in this warranty and does not include any liability for direct, indirect, incidental or consequential damages or expenses of delay and the Company's liability is limited to repair or replacement of defective parts as set forth herein.
- Any improper use and/or maintenance, including operation after discovery of defective or worn parts, operation beyond the rated capacity, substitution of parts not approved by Art's-Way Manufacturing Co., Inc., or any alternation or repair by other than an authorized Art's-Way Manufacturing Co., Inc. dealer which affects the product materially and adversely, shall void the warranty.
- No dealer, employee or representative is authorized to change this warranty in any way or grant any other warranty unless such change is made in writing and signed by an officer of Art's-Way Manufacturing Co., Inc.
- Some states do not allow limitations on how long an implied warranty lasts or exclusions of, or limitations on relief such as incidental or consequential damages, so the above limitations or exclusions may not apply to you. This warranty gives you the specific legal rights and you may have other rights that vary from state to state.

SAFETY FIRST

“A careful operator is the best insurance against an accident.”

(National Safety Council)

Most accidents can be prevented if the operator:

- Fully understands how the machine functions.
- Can anticipate situations which may produce problems.
- Can make necessary corrections before problems develop.



THIS SYMBOL MEANS ATTENTION!

BECOME ALERT!

YOUR SAFETY IS INVOLVED!

The American Society of Agricultural Engineers has adopted the ***Universal Safety Alert Symbol*** as a way to identify areas of potential danger if the equipment is not operated correctly. ***Please be alert whenever you see this symbol in the manuals or on your Moldboard Plow.***

Art's-Way Manufacturing Co., Inc. strives to make our equipment as safe as possible. The Art's-Way Moldboard Plow conforms to applicable safety standards at the time of manufacturing. A safety conscious equipment operator makes an effective accident-prevention program complete.

Safety features and instructions for the Moldboard Plow are detailed elsewhere in the Operator's Manual. It is the responsibility of the owner to ensure that all operators read and understand the manual before they are allowed to operate the Moldboard Plow. (***Occupational Safety and Health Administration (OSHA) regulations 1928.57.***)

Notices of Danger, Warning, and Caution

Signal Words: Note the use of signal words DANGER, WARNING and CAUTION on the Moldboard Plow and in this manual. The appropriate signal word for each has been selected using the following guidelines:



DANGER: Immediate and specific hazard *will* result in severe personal injury or death if proper precautions are not taken.



WARNING: Specific hazard or unsafe practice *could* result in severe personal injury or death if proper precautions are not taken.

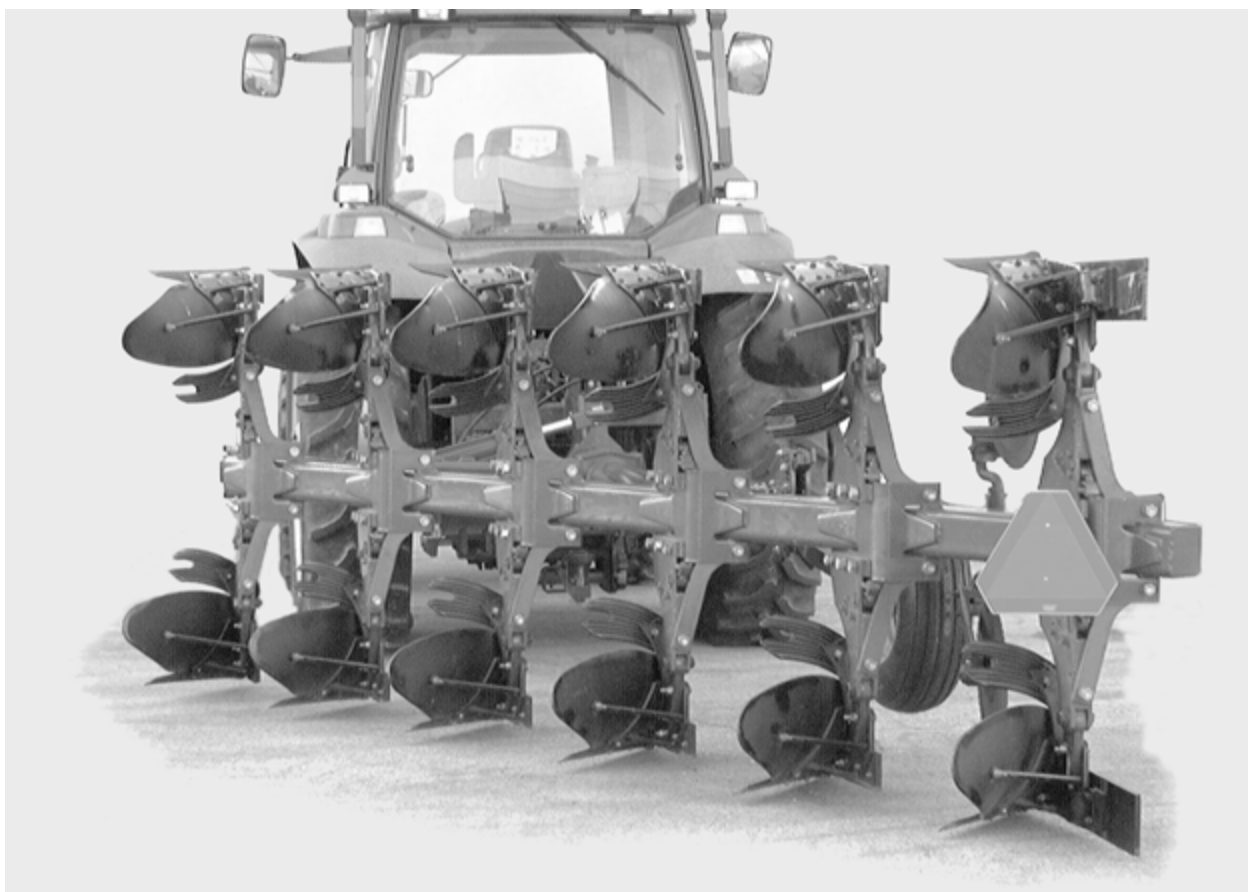


CAUTION: A reminder of good safety practices. Personal injury *could* result if proper procedures are not followed.

PARTS CATALOG

166 Moldboard Plow

520300



RD99N037

This unit first became available in North America May, 1979.

This Page Intentionally Blank

GENERAL

1

HYDRAULIC SYSTEM

8

CHASSIS / ATTACH-
MENTS

9

NUMERICAL INDEX

10

GENERAL INFORMATION

Indexes

Section 1 of this catalog contains a parts and service, to the owner, limited warranty, and alphabetical index. An alphabetical index also appears at the beginning of each section. Section 10 is the Alpha/Numerical Index which lists all part numbers with their page location and reference number.

Illustrations

The arrangement of this parts catalog is for easy identification of parts. All parts are illustrated in "exploded views" in proper relation to each other. Reference numbers used in the illustrations refer to those on the text pages. The text pages list reference number, part number, part description and the quantity required.

Abbreviations

P.I.N. "Product Identification Number"

SN "Serial Number"

NSS "Not Serviced Separately" in the part number column indicates this part is not available for service.

REF "Reference" in the part number column indicates this part has special service information. The page where this information can be found is given in the part description column.

UAR "Use As Required" in the quantity required column indicates the number of parts used is determined by service needs.

Right-Hand and Left-Hand Identification

The reference to right-hand and left-hand in this catalog is identified by the operator standing at the rear of the basic unit (without rear attachment), looking toward the front of the machine (in normal forward travel). For pages covering any machine attachments, right-hand and left-hand are defined by the operator sitting in the position for proper operation of the attachment.

Catalog Revisions and Supplements

Changes to the product may make it necessary to revise or add pages to this catalog. A cover sheet will list all pages released in a revision or supplement. Each new or revised page will have a new issue date. All revised and new pages must be put into the parts catalog as soon as they are received.

Parts Orders

Orders must specify product model, all necessary serial numbers, correct part number, complete description, quantity required, method of shipment, and shipping address.

Text Format Explanation

An assembly may contain service items. The component parts of an assembly or subassembly are indented. The quantity required column lists the number of assemblies required for a completed machine, and the number of components required in a complete assembly or subassembly.

The example below illustrates the use of indents and other text page elements explained on this page.

HYDRAULIC FILTER

REF.	PART NO.	DESCRIPTION	REQ'D.
1	ID4356734	FILTER ASSEMBLY - hydraulic oil, P.I.N. 7534840 and after	1
	ID61903	HEAD ASSEMBLY - filter	1
2	NSS	HEAD - filter, order ID61903 head assembly	1
3	ID58199	VALVE - bypass	1
	ID43800	KIT - filter element, replaces ID35700 element kit	1
4	NSS	ELEMENT - filter, order ID43800 element kit	1
5	IA27994	O-RING - filter	1
6	ID61948	HOUSING -filter	1
7	REF	CANOPY - ROPS, order from Machinery Price List	1
8	I843065C1	HOSE - 132 inch (3353 mm) long, reservoir to pump	1
9	I113-323	BOLT - hex, 7/16 NC x 1-3/4 inch	2
10	I814-8030	BOLT - hex, 8 - 1.25 x 30 mm	4

ALPHABETICAL INDEX

B

Beam - Rigid 9-19
 Beam - Trip 9-21, 9-23

C

Coulter - Shanks And Clamps 9-41
 Coulters - Side Arm Rolling 9-25, 9-27
 Cylinder Assy - Rollover 8-11 – 8-15

D

Decals 9-45 – 9-49

F

Frame 9-3 – 9-17

G

Gauge - Wheel 9-33 – 9-39

H

Hydraulic Circuit 8-3 – 8-9

R

Rear Furrow - Wheel 9-29, 9-31
 Rigid - Beam 9-19
 Rollover - Cylinder Assy 8-11 – 8-15

S

Shanks And Clamps - Coulter 9-41
 Side Arm Rolling - Coulters 9-25, 9-27

T

Trash Plates And Brackets 9-43
 Trip - Beam 9-21, 9-23

W

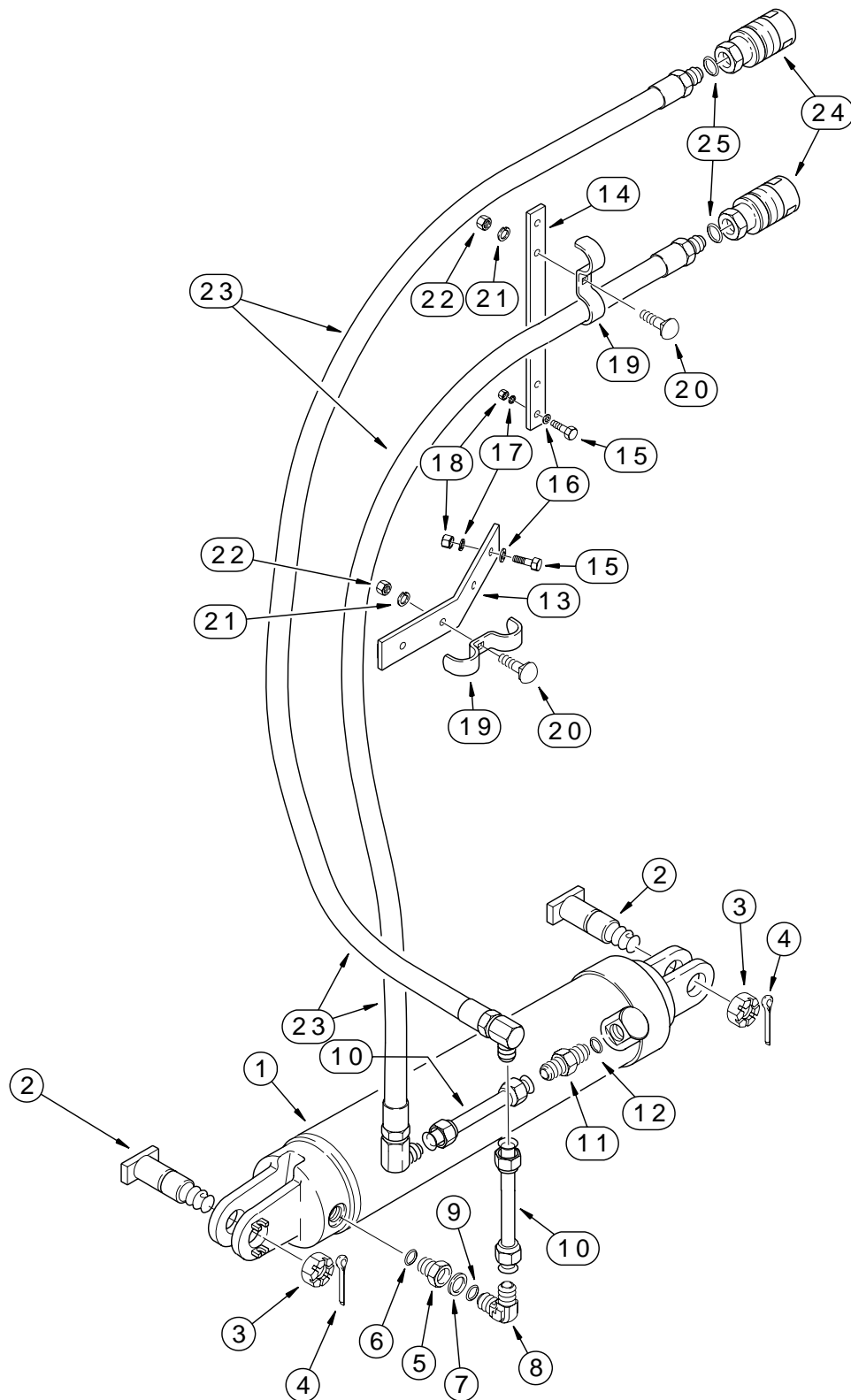
Wheel - Gauge 9-33 – 9-39
 Wheel - Rear Furrow 9-29, 9-31

This Page Intentionally Blank

ALPHABETICAL INDEX

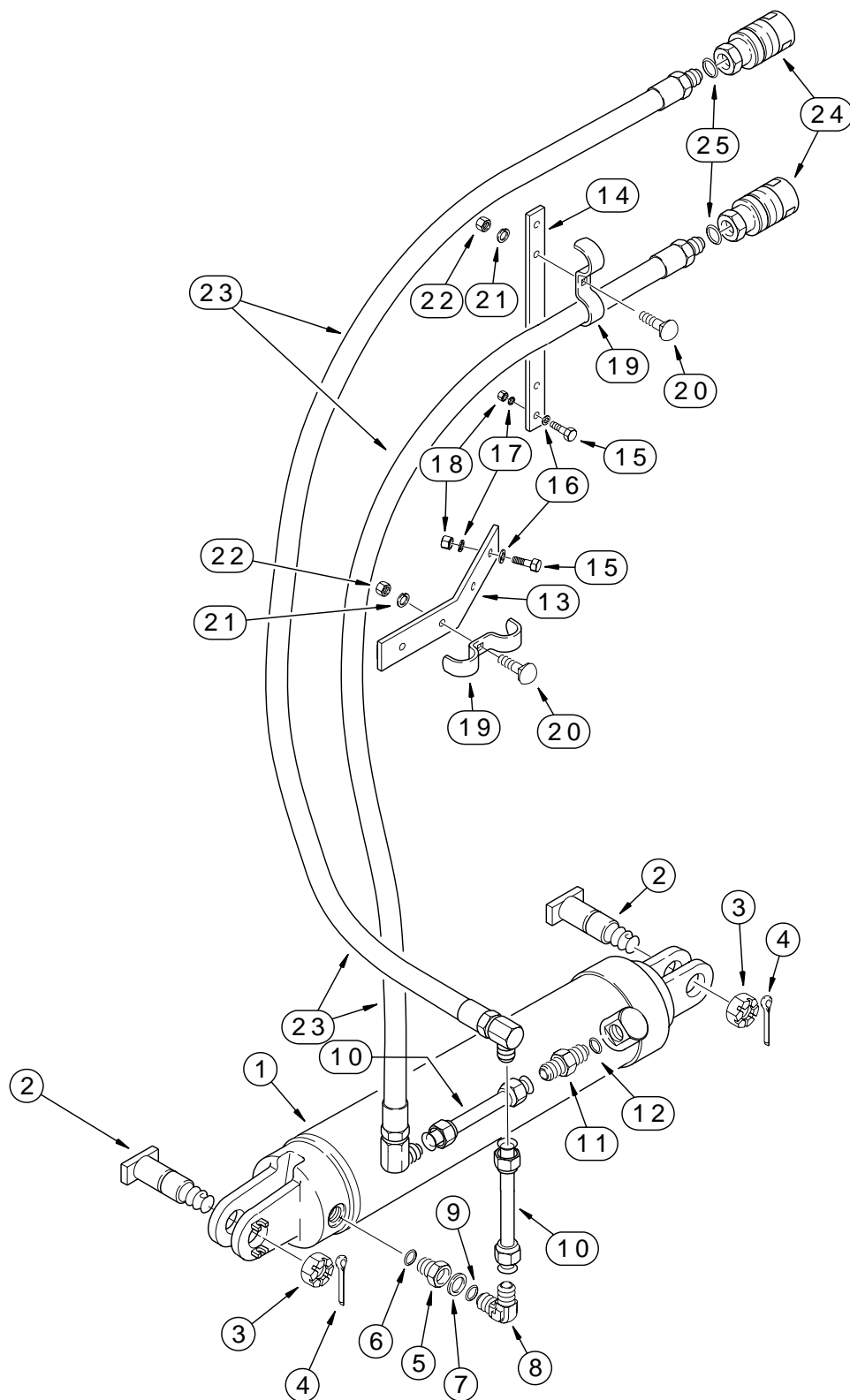
Hydraulic System

DESCRIPTION	PAGE
Cylinder Assy - Rollover	8-11 – 8-15
Hydraulic Circuit	8-3 – 8-9
Rollover - Cylinder Assy	8-11 – 8-15



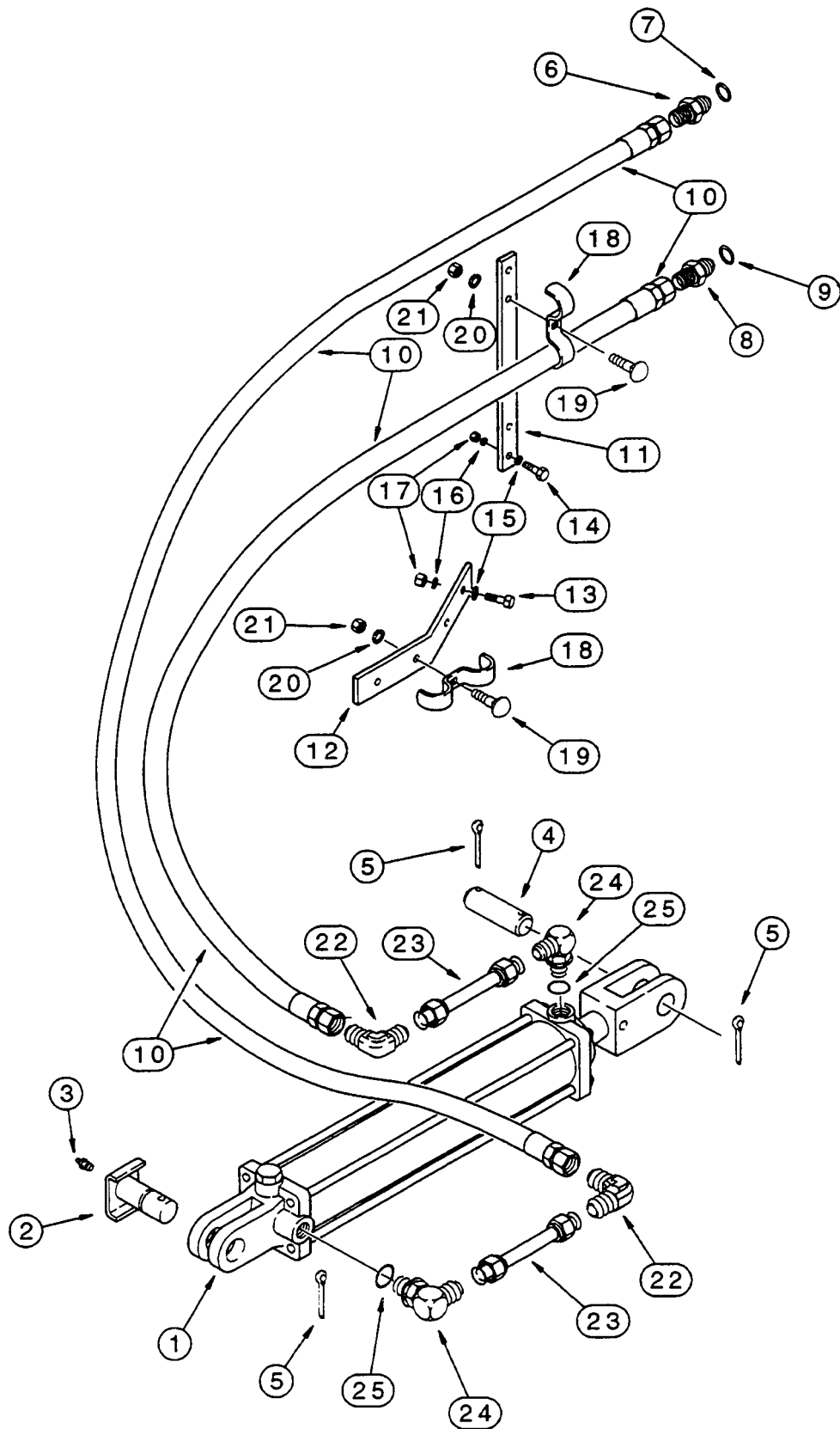
HYDRAULIC CIRCUIT

REF	PART NO.	DESCRIPTION	QTY
		Models With I403900R93 Rollover Cylinder	
1	I403900R93	Cylinder Assy, Rollover - No Longer Available, Order: I85153C91 *See Note	1
		<i>See Page: 8-11</i>	
2	I490865R1	Pin, Pivot	2
3	I425-1316	Nut - 1 NS	2
4	I432-1224	Pin, Cotter - 3/16 x 1-1/2	2
5	I542889R91	Fitting, Restrictor - For 4 Furrow 18 Inch and 5 Furrow 16 and 18 Inch	1
5	I112850C1	Fitting, Restrictor - For 6 Furrow 18 Inch	1
6	I237-6010	O-Ring - 3/4 ID x 3/32	1
7	I542890R1	Washer	1
8	I218-5107	Elbow, 90 Degree - 7/8 fl x adj Or (Includes #9)	1
9	I237-6010	O-Ring - 3/4 ID x 3/32	1
10	I542891R1	Tube	2
11	I218-5062	Adapter - 7/8 fl x Or (Includes #12)	1
		<i>Note: For service replacement of complete cylinder assembly order I85153C91 cylinder, new pins, hoses and fittings, see pages 8-7 and 8-13 for new cylinder and hydraulic circuit. For service components of I403900R93 cylinder, see page 8-11</i>	
		<i>Continued</i>	



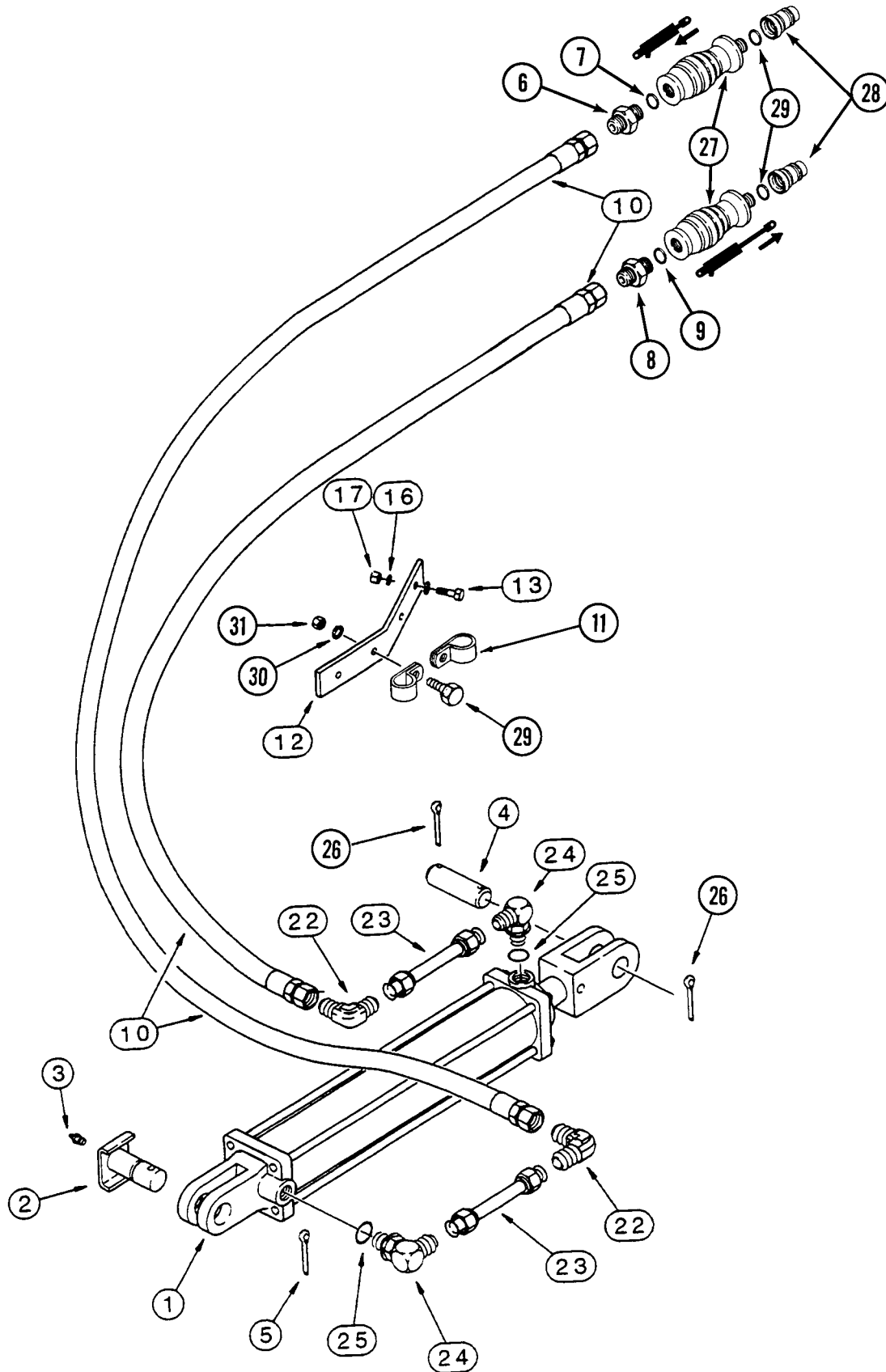
HYDRAULIC CIRCUIT

REF	PART NO.	DESCRIPTION	QTY
		Models With I403900R93 Rollover Cylinder	
12	I237-6010	O-Ring - 3/4 ID x 3/32	1
13	I542892R1	Bracket - For 4 Furrow 18 Inch and 5 Furrow 16 and 18 Inch	1
13	I112849C1	Bracket - For 6 Furrow 18 Inch	1
14	I542894R1	Strap, Rubber	1
15	I413-824	Bolt - 1/2 x 1-1/2	2
15	I413-828	Bolt - 1/2 x 1-3/4	2
16	I495-11053	Washer - 17/32 x 1-1/16 x 3/32	4
17	I492-11050	Washer, Lock - 1/2	4
18	I425-108	Nut - 1/2	4
19	I515030R1	Clamp	2
20	I434-616	Bolt, Carriage - 3/8 x 1	2
21	I492-11038	Washer, Lock - 3/8	2
22	I425-106	Nut - 3/8	2
23	I542893R91	Hose - 2083 mm (82-1/8 in)	2
24	I1272399C2	Coupling, Male - 7/8 NF (Stamped With Part Number - Internal Parts Not Serviced)	X
24	I1341843C1	Coupling, Male - 7/8 NF (Stamped With Part Number - Internal Parts Not Serviced)	X
24	I1285718C2	Coupling, Male - 3/4 NF (Stamped With Part Number - Internal Parts Not Serviced)	X
25	I237-6010	O-Ring - 3/4 ID x 3/32	X
26	I237-6008	O-Ring - 41/64 ID x 3/32	X
27	I218-5261	Adapter - 7/8 Or x 3/4 fem - Includes #27A (Not Illustrated)	X
27A	I237-6010	O-Ring - 3/4 ID x 3/32	1
28	I1252129C1	Adapter - 3/4 Or x 7/8 fem - Includes #28A (Not Illustrated)	X
28A	I237-6008	O-Ring - 41/64 ID x 3/32	1
29	I1282459C1	Kit - Coupler Tag (Not Illustrated)	X



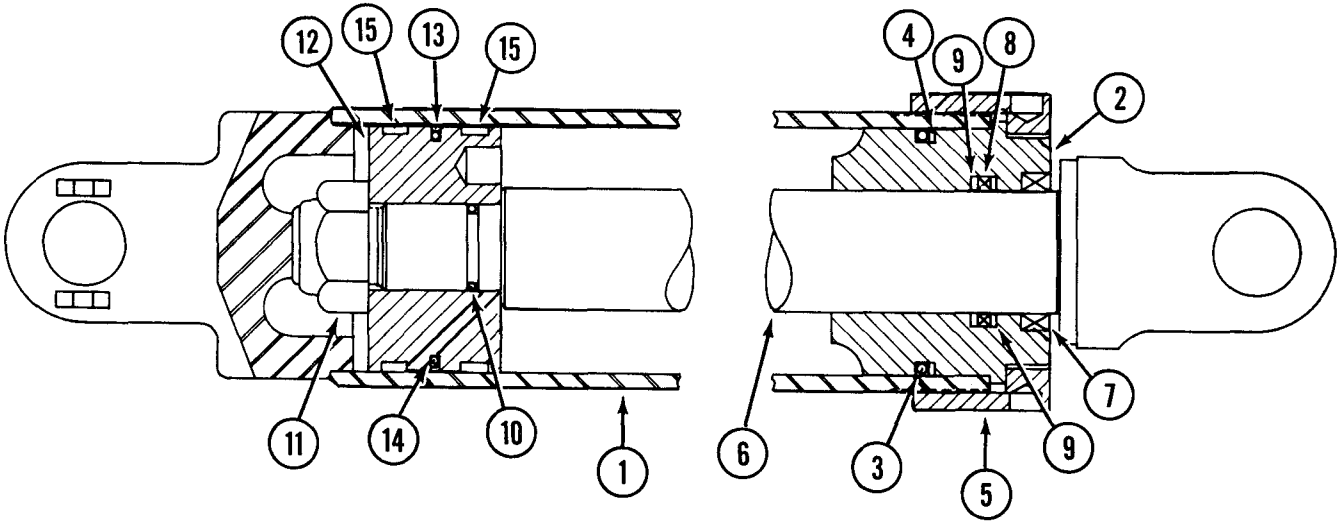
HYDRAULIC CIRCUIT

REF	PART NO.	DESCRIPTION	QTY
Models With I85153C91 Rollover Cylinder			
1	I85153C91	Cylinder Assy - Rollover *See Page 8-13	1
2	I97750C1	Pin, Pivot	1
3	I219-87	Fitting, Grease - 1/4 st x 9/16	1
4	I1960707C2	Pin	1
5	I432-2028	Pin, Cotter - 5/16 x 1-3/4	3
6	I218-5058	Adapter - 9/16 fl x 3/4 Or (Includes #7)	1
7	I237-6006	O-Ring - 15/32 ID x 5/64	1
8	I1337105C1	Adapter, Restrictor - 0,125 in orifice (Includes #9) <i>For 4 and 5 Furrow Plows</i>	1
8	I1337104C1	Adapter, Restrictor - 0,097 in orifice (Includes #9) <i>For 6 Furrow Plows</i>	1
9	I237-6006	O-Ring - 15/32 ID x 5/64	1
10	I1337107C1	Hose - 2032 mm (80 in)	2
11	I542894R1	Strap, Rubber	1
12	I542892R1	Bracket - For 4 and 5 Furrow Plows	1
12	I112849C1	Bracket - For 6 Furrow Plows	1
13	I413-824	Bolt - 1/2 x 1-1/2	2
14	I413-828	Bolt - 1/2 x 1-3/4	2
15	I495-11053	Washer - 17/32 x 1-1/16 x 3/32	4
16	I492-11050	Washer, Lock - 1/2	4
17	I425-108	Nut - 1/2	4
18	I515030R1	Clamp	2
19	I434-616	Bolt, Carriage - 3/8 x 1	2
20	I492-11038	Washer, Lock - 3/8	2
21	I425-106	Nut - 3/8	2
22	I218-473	Elbow, 90 Degree - 9/16 fl x fl	2
23	I97762C1	Tube	2
24	I218-5128	Elbow, 90 Degree - 9/16 fl x 3/4 Or (Includes #25)	2
25	I237-6006	O-Ring - 15/32 ID x 5/64	1



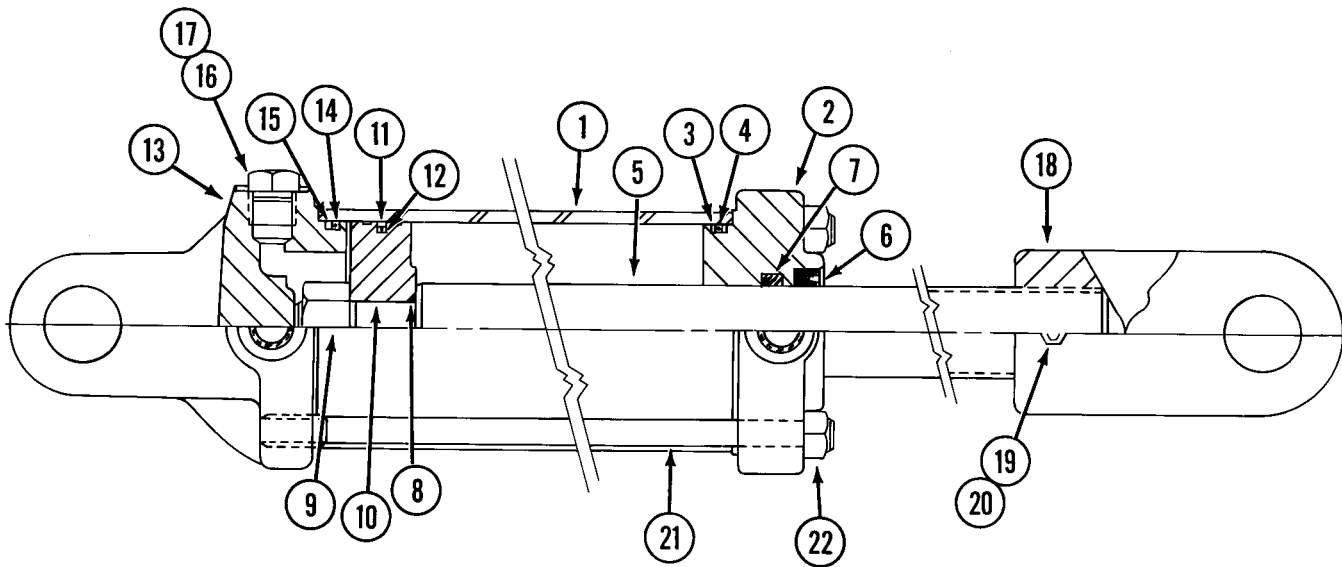
HYDRAULIC CIRCUIT

REF	PART NO.	DESCRIPTION	QTY
Models With I339840A1 Rollover Cylinder			
1	I339840A1	Cylinder Assy - Rollover See Page 8-15	1
2	I97750C1	Pin, Pivot	1
3	I219-87	Fitting, Grease - 1/4 st x 9/16	1
4	I1960707C2	Pin	1
5	I432-2032	Pin, Cotter - 5/16 x 2	1
6	I218-5058	Adapter - 9/16 fl x 3/4 Or (Includes #7)	1
7	I237-6006	O-Ring - 15/32 ID x 5/64	1
8	I1337105C1	Adapter, Restrictor - 0,125 in orifice (Includes #9) <i>For 4 and 5 Furrow Plows</i>	1
8	I1337104C1	Adapter, Restrictor - 0,097 in orifice (Includes #9) <i>For 6 Furrow Plows / / Pour 6 sillons</i>	1
9	I237-6006	O-Ring - 15/32 ID x 5/64	1
10	I195504C2	Hose - 2030 mm (79-59/64 in)	2
11	I515-25190	Clamp - 3/4 ID	
12	I112849C1	Bracket	1
13	I413-824	Bolt - 1/2 x 1-1/2	1
16	I492-11050	Washer, Lock - 1/2	1
17	I425-108	Nut - 1/2	1
22	I218-473	Elbow, 90 Degree - 9/16 fl x fl	2
23	I97762C1	Tube	2
24	I218-5128	Elbow, 90 Degree - 9/16 fl x 3/4 Or (Includes #25)	2
25	I237-6006	O-Ring - 15/32 ID x 5/64	1
26	I438-32440	Pin, Roll - 3/8 x 2-1/2	2
27	I236878A1	Package, Coupling (Push-Pull Red)	1
28	I1285718C2	Coupling - 3/4 NF	2
29	I70-1108	Screw - No. 10 x 1/2	1
30	I495-81099	Washer - 13/64 x 1/2 x 1/16	1
31	I225-14110	Nut - No. 10	1



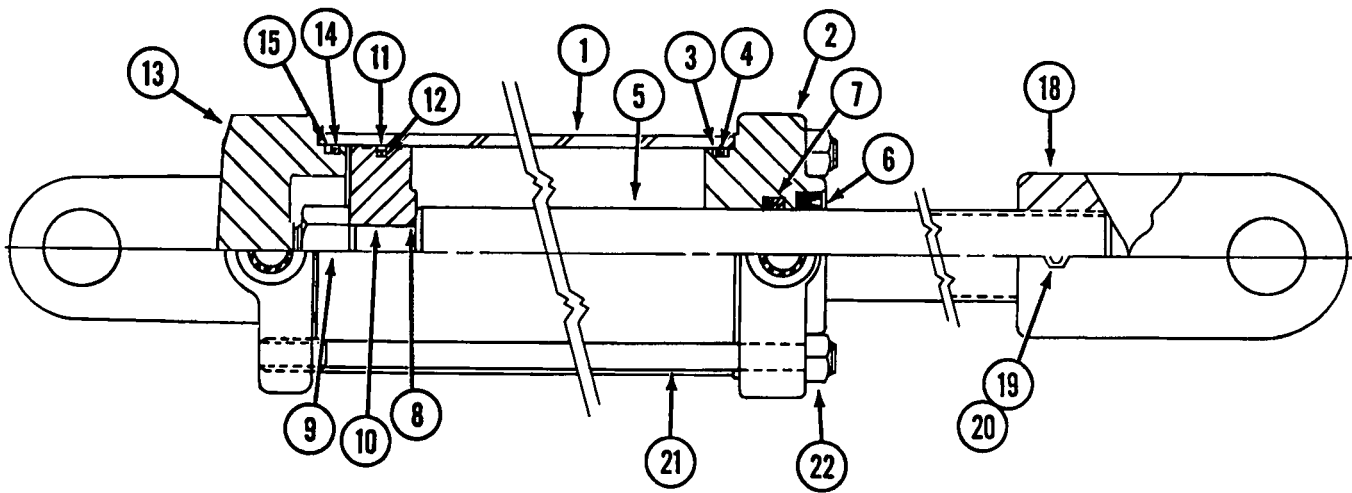
CYLINDER ASSY - ROLLOVER

REF	PART NO.	DESCRIPTION	QTY
		I403900R93 Cylinder Assembly	
	I403900R93	Cylinder Assy (7/8-14 NF Ports) No Longer Available - Order: 85153C91 See Pages 8-13 <i>Consists Of #1 through 15</i>	1
1	NSS	Tube	1
2	I403270R1	Gland, Cylinder	1
3	I238-5338	O-Ring - 3-1/8 ID x 3/16	1
4	I381088R1	Ring, Backup	1
5	I381089R1	Ring, Retaining	
6	I403993R3	Rod, Piston	1
7	I403845R1	Seal, Wiper	1
8	I403995R1	Ring	1
9	I387362R2	Ring, Backup	2
10	I238-5214	O-Ring - 1 ID x 1/8	1
11	I25126R1	Nut, Lock - 1-1/8 NF; 8	1
12	I403271R1	Piston	1
13	I381086R1	Ring, Piston	1
14	I238-5151	O-Ring - 3 ID x 3/32	1
15	I383005R1	Ring, Wear	2
	I387881R92	Package, Seals - Consists of #3, 4, 7 through 10, and 13 through 15	1



CYLINDER ASSY - ROLLOVER

REF	PART NO.	DESCRIPTION	QTY
		I85153C91 Cylinder Assembly	
	I85153C91	Cylinder Assy (3/4-16 NF Ports) - Consists of #1 through 22	1
1	NSS	Tube	1
2	I93334C1	Gland, Cylinder	1
3	NSS	O-Ring	1
4	NSS	Ring, Backup	1
5	I93333C1	Rod, Piston	1
6	NSS	Seal, Wiper	1
7	NSS	Seal	1
8	NSS	O-Ring	1
9	I25126R1	Nut, Lock - 1-1/8 NF; 8	1
10	I93337C1	Piston	1
11	NSS	Seal	1
12	NSS	O-Ring	1
13	I93335C1	Head	1
14	NSS	O-Ring	1
15	NSS	Ring, Backup	1
16	I218-5156	Plug, Hex - 3/4 (Includes #17)	1
17	NSS	O-Ring	1
18	I80558C1	Clevis	1
19	I483-1386	Setscrew - 3/8 x 3/8	1
20	I145453C1	Pad	1
21	I93338C1	Bolt	4
22	I425-1010	Nut - 5/8	4
	I93339C1	Package, Seals - Consists of #3, 4, 6 through 8, 11, 12, 14, 15, and 17	1



CYLINDER ASSY - ROLLOVER

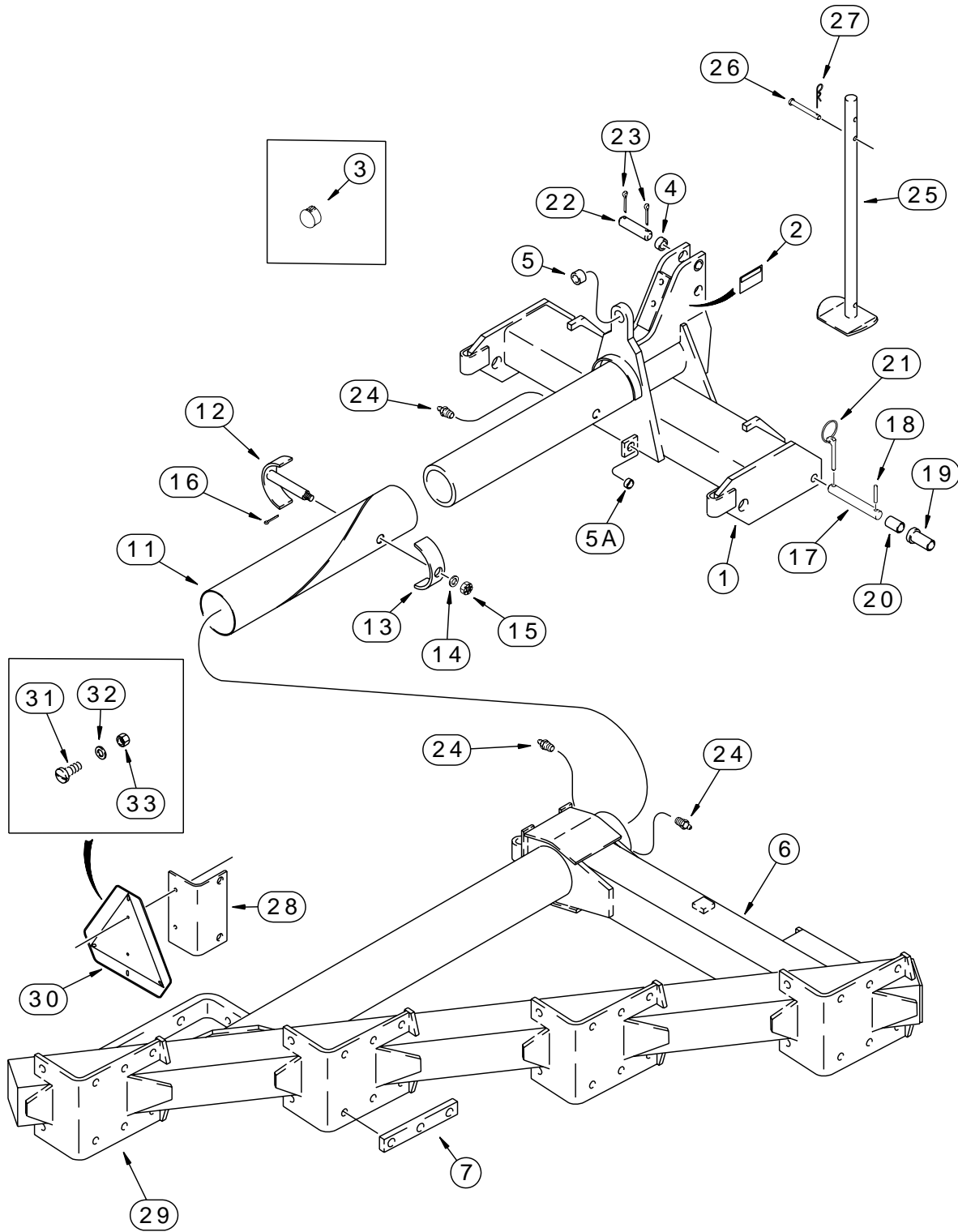
REF	PART NO.	DESCRIPTION	QTY
		I339840A1 Cylinder Assembly	
	I339840A1	Cylinder Assy (3/4-16 NF Ports) - Consists of #1 through #22	1
1	NSS	Tube	1
2	I347609A1	Gland, Cylinder	1
3	NSS	O-Ring	1
4	NSS	Ring, Backup	1
5	I339842A1	Rod, Piston	1
6	NSS	Wiper - Piston Rod	1
7	NSS	Seal	1
8	NSS	O-Ring	1
9	I25126R1	Nut, Lock - 1-1/8 NF; 8	1
10	I93337C1	Piston	1
11	NSS	Seal	1
12	NSS	O-Ring	1
13	I339841A1	Head, Cylinder	1
14	NSS	O-Ring	1
15	NSS	Ring, Backup	1
18	I80558C1	Clevis	1
19	I483-1386	Setscrew - 3/8 x 3/8	1
20	I145453C1	Pad	1
21	I93338C1	Bolt	4
22	I425-1010	Nut - 5/8	4
	I93339C1	Package, Seals - Consists of #3, 4, 6-8, 11, 12, 14, and 15	1

This Page Intentionally Blank

ALPHABETICAL INDEX

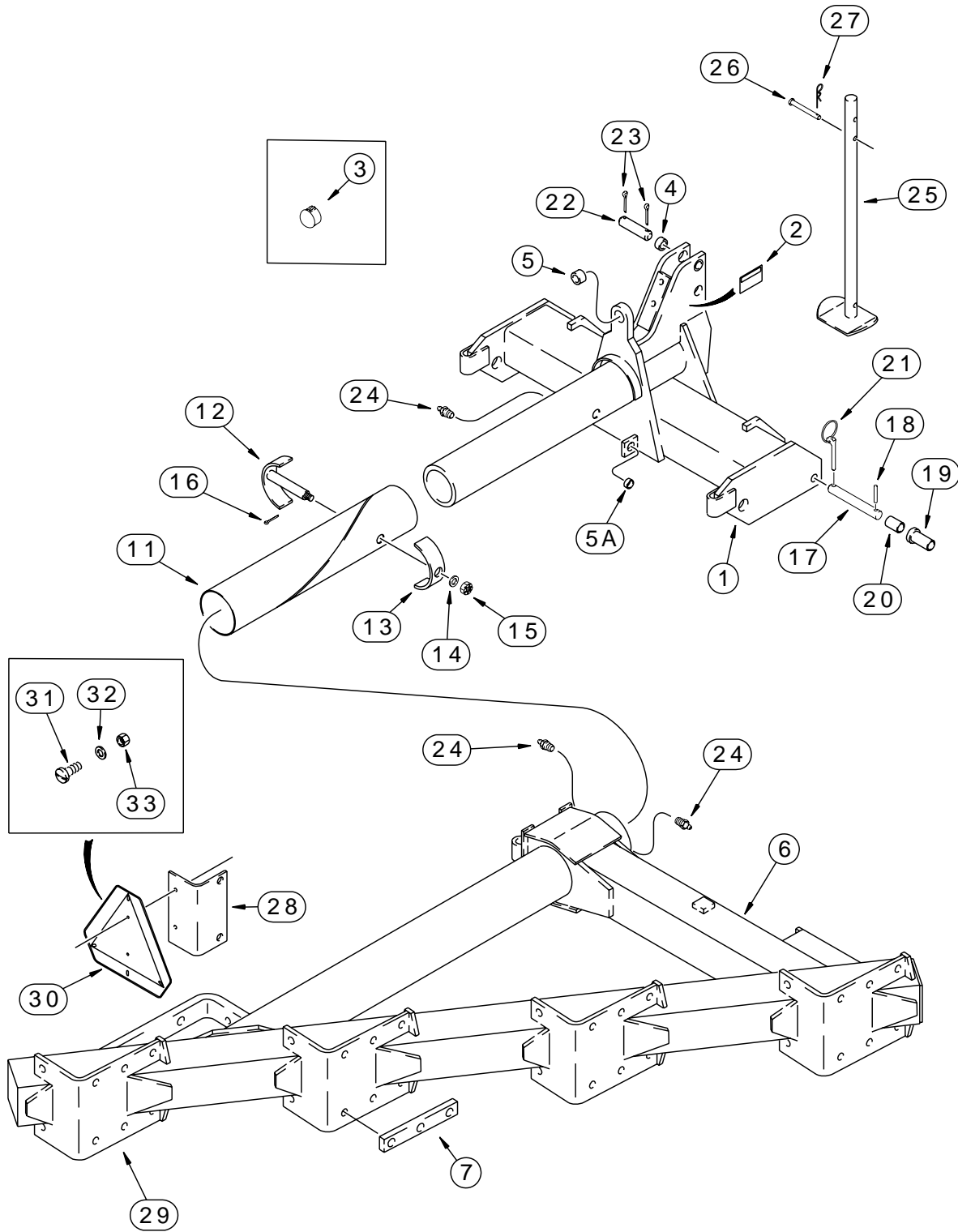
Chassis/Attachments

DESCRIPTION	PAGE
Beam - Rigid	9-19
Beam - Trip	9-21, 9-23
Coulter - Shanks And Clamps	9-41
Coulters - Side Arm Rolling	9-25, 9-27
Decals	9-45 – 9-49
Frame	9-3 – 9-17
Gauge - Wheel	9-33 – 9-39
Rear Furrow - Wheel	9-29, 9-31
Rigid - Beam	9-19
Shanks And Clamps - Coulter	9-41
Side Arm Rolling - Coulters	9-25, 9-27
Trash Plates And Brackets	9-43
Trip - Beam	9-21, 9-23
Wheel - Gauge	9-33 – 9-39
Wheel - Rear Furrow	9-29, 9-31



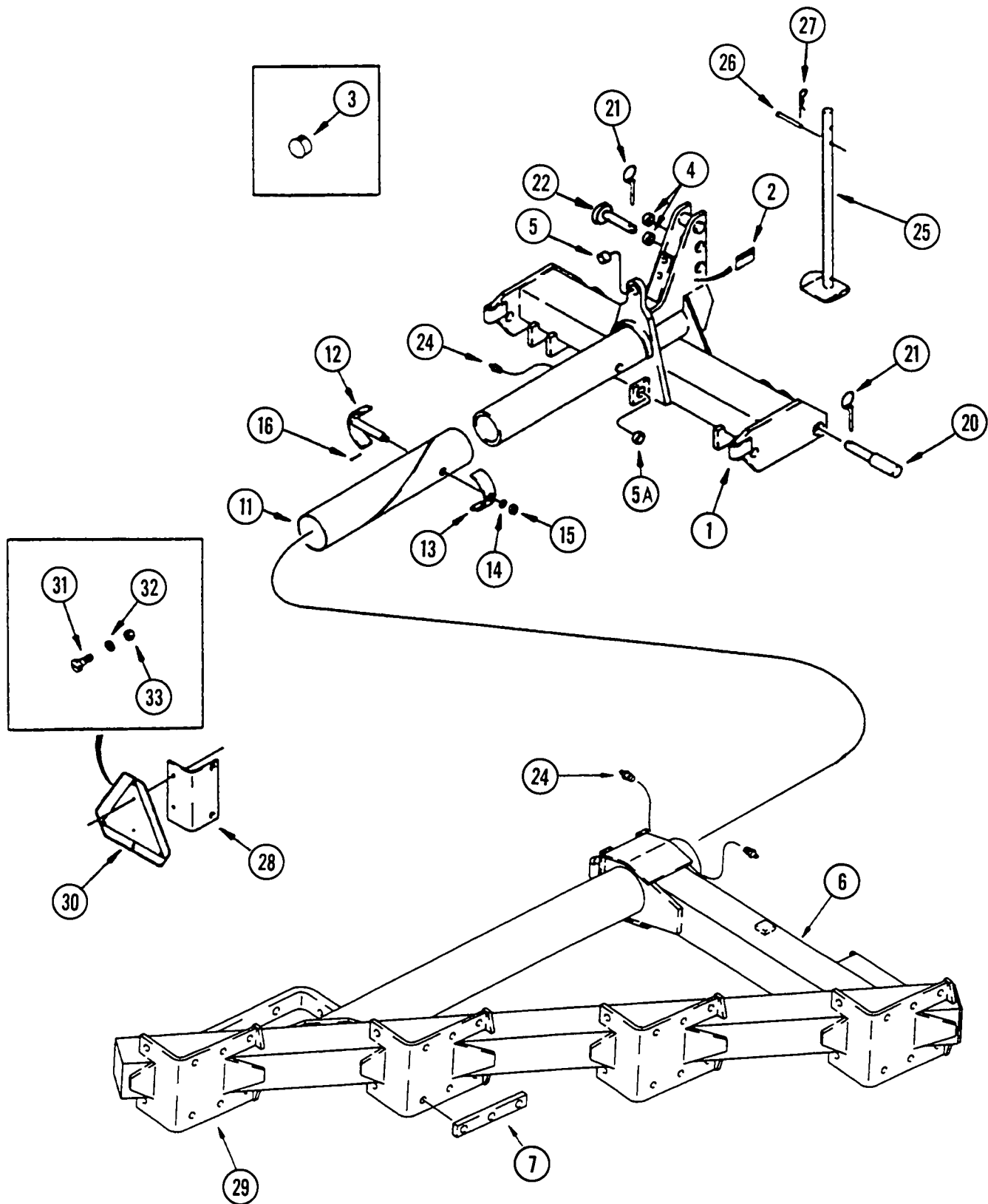
FRAME

REF	PART NO.	DESCRIPTION	QTY
For 4 and 5 Furrow Plows			
-CCD0025001			
1	I313366A1	Frame Assy, Front Main - Includes #2	1
2	I543301R1	Decal, Caution - Lift Links	1
	I439-11488	Pin, Clevis - 7/8 x 5-1/2; 2 (Not Illustrated)	2
	I651239R1	Washer - 29/32 x 1-1/2 x 1/4 (Not Illustrated)	14
	I496-21094	Washer - 15/16 x 1-3/4 x 3/16 (Not Illustrated)	2
	I432-1624	Pin, Cotter - 1/4 x 1-1/2 (Not Illustrated)	2
3	I1017987R1	Plug	1
4	I541361R1	Bushing - 1-1/64 x 1-3/8 x 5/8	2
5	I112761C1	Bushing	1
5A	I112886C1	Bushing	1
6	I248195A1	Frame, Rear Main - For 4 Furrow 18 Inch With Rigid Beam <i>Replaces: I131963C2</i> <i>Also See Ref: #8 and #10</i>	1
7	I1337611C1	Spacer, Spring Trip Beam	8
8	I248196A1	Frame Rear Main - For 5 Furrow 16 Inch With Rigid Beam (Not Illustrated) <i>Replaces: I131905C1</i>	1
9	I1337611C1	Spacer, Spring Trip Beam (Not Illustrated)	10
<i>Continued</i>			



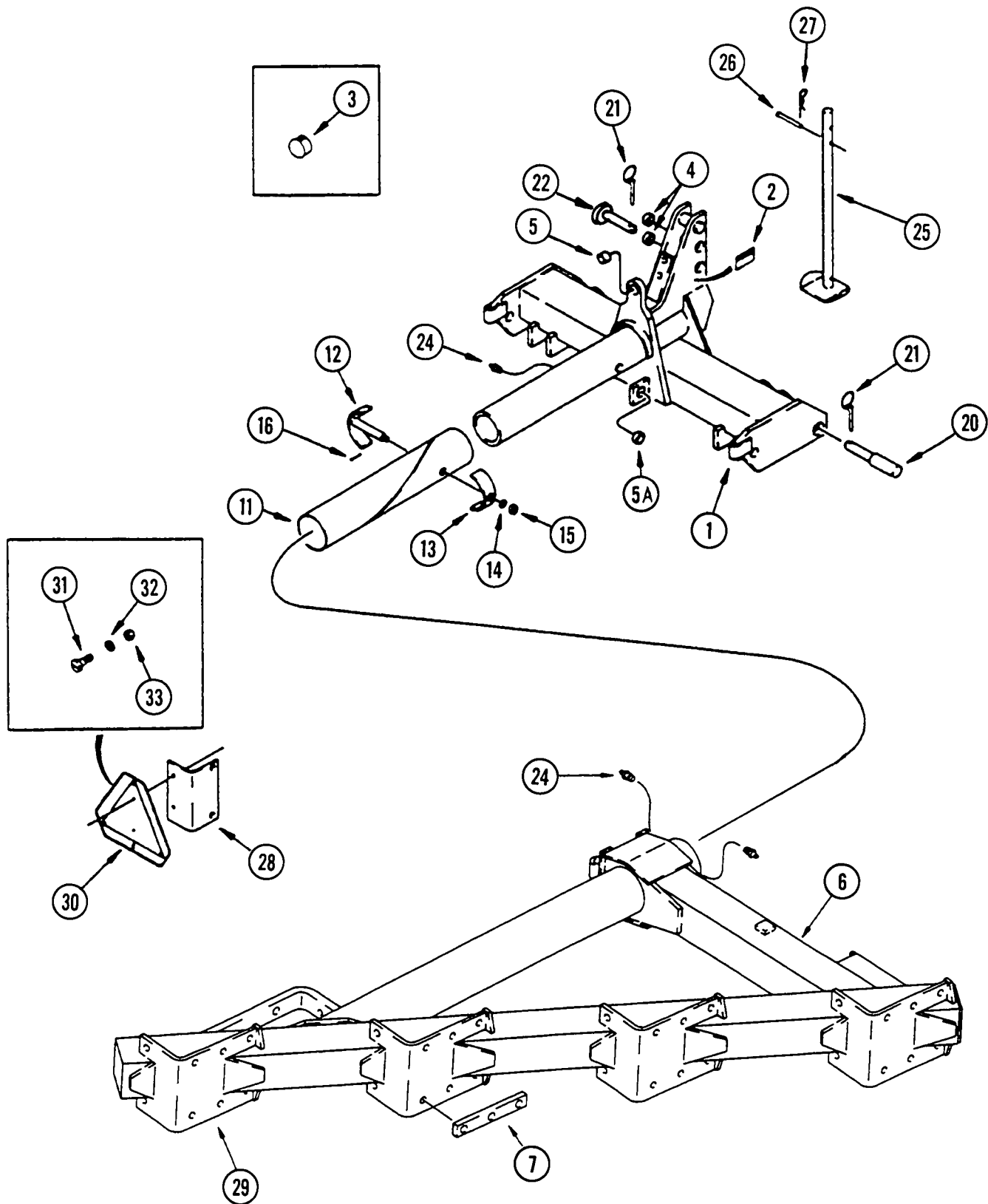
FRAME

REF	PART NO.	DESCRIPTION	QTY
For 4 and 5 Furrow Plows			
-CCD0025001			
10	I248197A1	Frame, Rear Main - For 5 Furrow 18 Inch With Rigid and Spring Trip Beam (Not Illustrated) Replaces: I131543C5	1
11	I542457R1	Tube, Bearing	1
12	I542459R1	Pin	1
13	I542458R1	Clamp	1
14	I495-81255	Washer - 25/32 x 1-1/2 x 11/64	1
15	I425-1212	Nut - 3/4	1
16	I432-820	Pin, Cotter - 1/8 x 1-1/4	1
17	I1279504C1	Pin Assy - Includes #18	2
18	I438-32440	Pin, Roll - 3/8 x 2-1/2	1
19	I542455R1	Collar	2
20	I542456R1	Spacer	2
21	I372907R91	Pin, Lock	4
22	I490919R1	Pin - 1-1/4 x 5-7/64	1
23	I432-1632	Pin, Cotter - 1/4 x 2	2
24	I219-87	Fitting, Grease - 1/4 st x 9/16	3
25	I541399R1	Stand, Parking	1
26	I439-5844	Pin, Clevis - 1/2 x 2-3/4	1
27	I1980543C1	Pin, Cotter - 5/32	1
28	I543924R1	Bracket - SMV Emblem and Reflector	1
29	I112675C2	Bracket, Beam Mounting Welded to Rear Main Frame	X
30	I311860A1	Emblem - Slow Moving Vehicle (Includes Decal)	1
31	I70-1108	Screw - No. 10 x 1/2	2
32	I495-81099	Washer - 13/64 x 1/2 x 1/16	2
33	I225-14110	Nut - No. 10	2



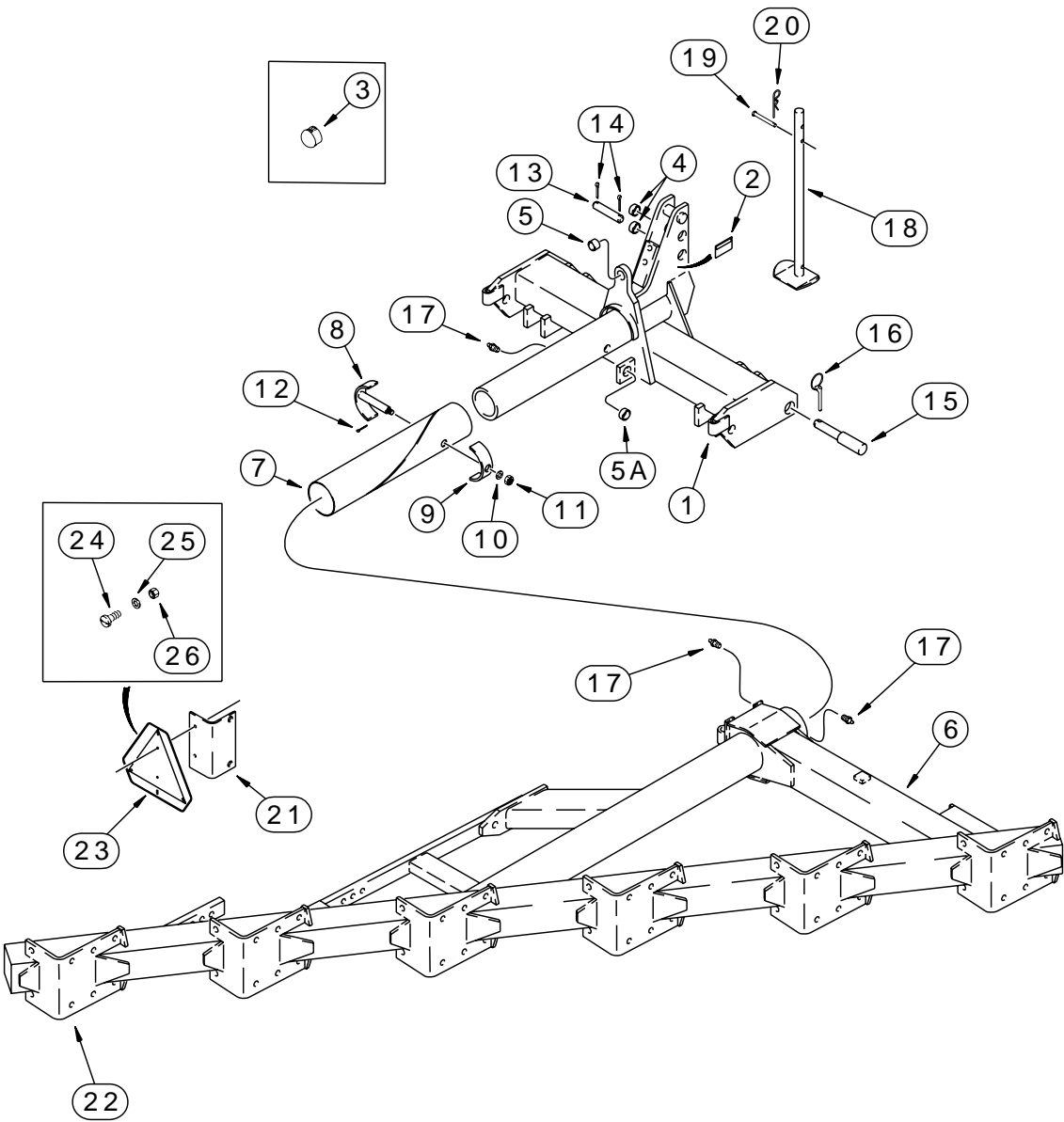
FRAME

REF	PART NO.	DESCRIPTION	QTY
For 4 and 5 Furrow Plows			
CCD0025001-			
1	I314148A1	Frame Assy, Front Main - Includes .	1
2	I543301R1	Decal, Caution - Lift Links .	1
	I439-11488	Pin, Clevis - 7/8 x 5-1/2; 2 (Not Illustrated)	2
	I651239R1	Washer - 29/32 x 1-1/2 x 1/4 (Not Illustrated)	14
	I496-21094	Washer - 15/16 x 1-3/4 x 3/16 (Not Illustrated)	2
	I432-1624	Pin, Cotter - 1/4 x 1-1/2 (Not Illustrated)	2
3	I1017987R1	Plug	1
4	I307401A1	Bushing - 1-1/4 x 1-5/8 x 3/4	4
4A	I337722A1	Bushing, Wear - 1-1/2 x 1-3/4 x 1 (Not Illustrated)	1
5	I112761C1	Bushing	1
5A	I112886C1	Bushing	1
6	I310505A2	Frame, Rear Main - For 4 Furrow 18 Inch With Rigid Beam. Also See Ref 8, 10	1
7	I1337611C1	Spacer, Spring Trip Beam (If Used)	8
8	I310504A2	Frame, Rear Main - For 5 Furrow 16 Inch With Rigid Beam. (Not Illustrated)	1
9	I1337611C1	Spacer, Spring Trip Beam (If Used) (Not Illustrated)	10
10	I310503A1	Frame, Rear Main - For 5 Furrow 18 Inch With Rigid and Spring Trip Beam (Not Illustrated)	1
<i>Continued</i>			



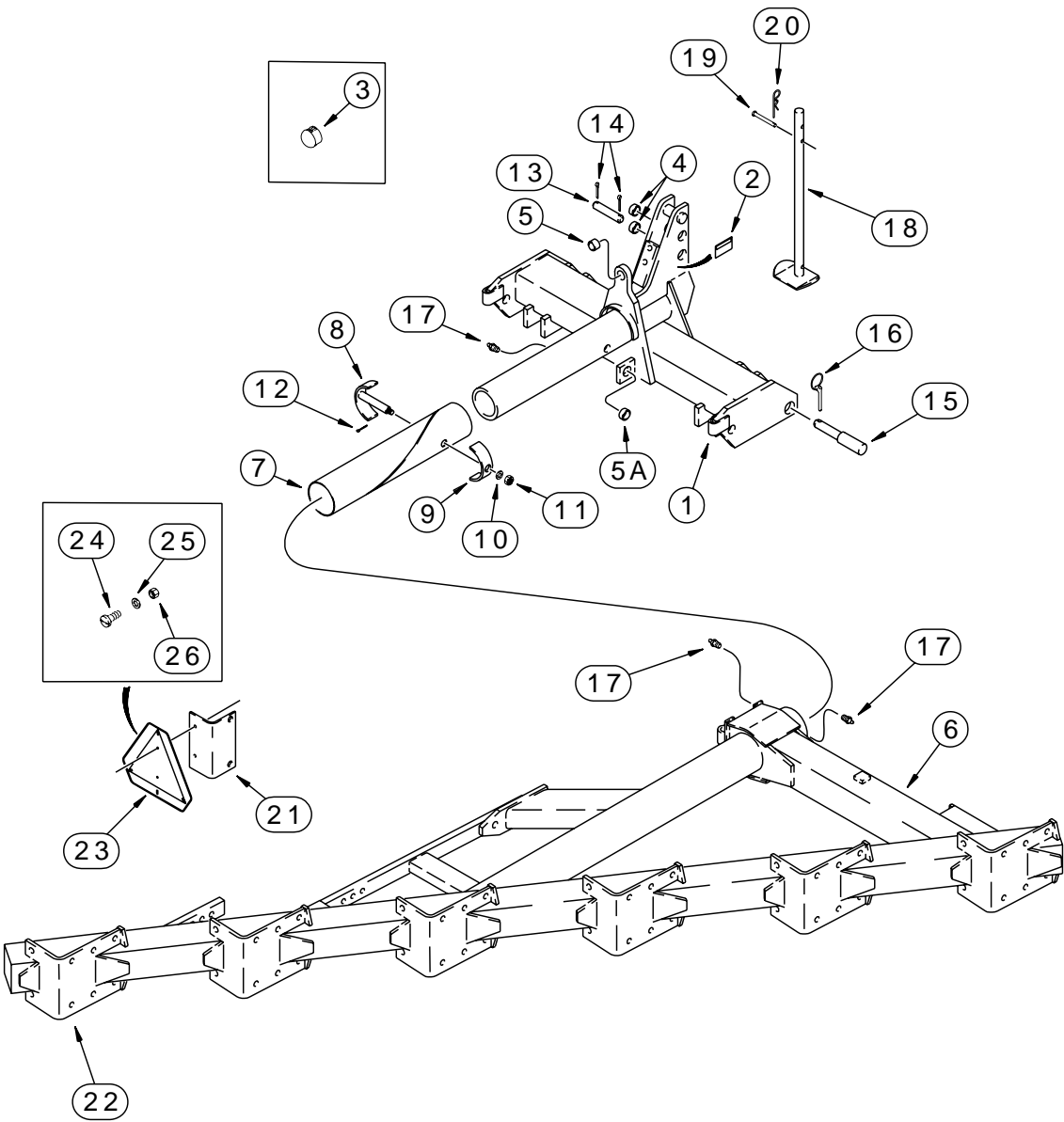
FRAME

REF	PART NO.	DESCRIPTION	QTY
		For 4 and 5 Furrow Plows	
		CCD0025001-	
11	I310213A1	Tube, Bearing	1
12	I542459R3	Pin	1
13	I542458R1	Clamp	1
14	I495-81255	Washer - 25/32 x 1-1/2 x 11/64	1
15	I425-1212	Nut - 3/4	1
16	I432-820	Pin, Cotter - 1/8 x 1-1/4	1
20	I101137C1	Bar	2
21	I392181R1	Pin	1
22	I316396A2	Pin, Headed - 1/1/4 x 6-7/64	1
24	I219-87	Fitting, Grease - 1/4 st x 9/16	3
25	I541399R1	Stand, Parking	1
26	I439-5844	Pin, Clevis - 1/2 x 2-3/4	1
27	I1980543C1	Pin, Cotter - 5/32	1
28	I543924R1	Bracket, SMV Emblem and Reflector	1
29	I112675C2	Bracket, Beam Mounting - Welded To Rear Main Frame	X
30	I311860A1	Emblem, Slow Moving Vehicle (Includes Decal)	1
31	I70-1108	Screw - No. 10 x 1/2	2
32	I495-81099	Washer - 13/64 x 1/2 x 1/16	2
33	I225-14110	Nut - No. 10	2
34	I337715A1	Plate, End Cover (Not Illustrated)	1
35	I280-1478	Screw - 1/4 x 1/2 (Not Illustrated)	4



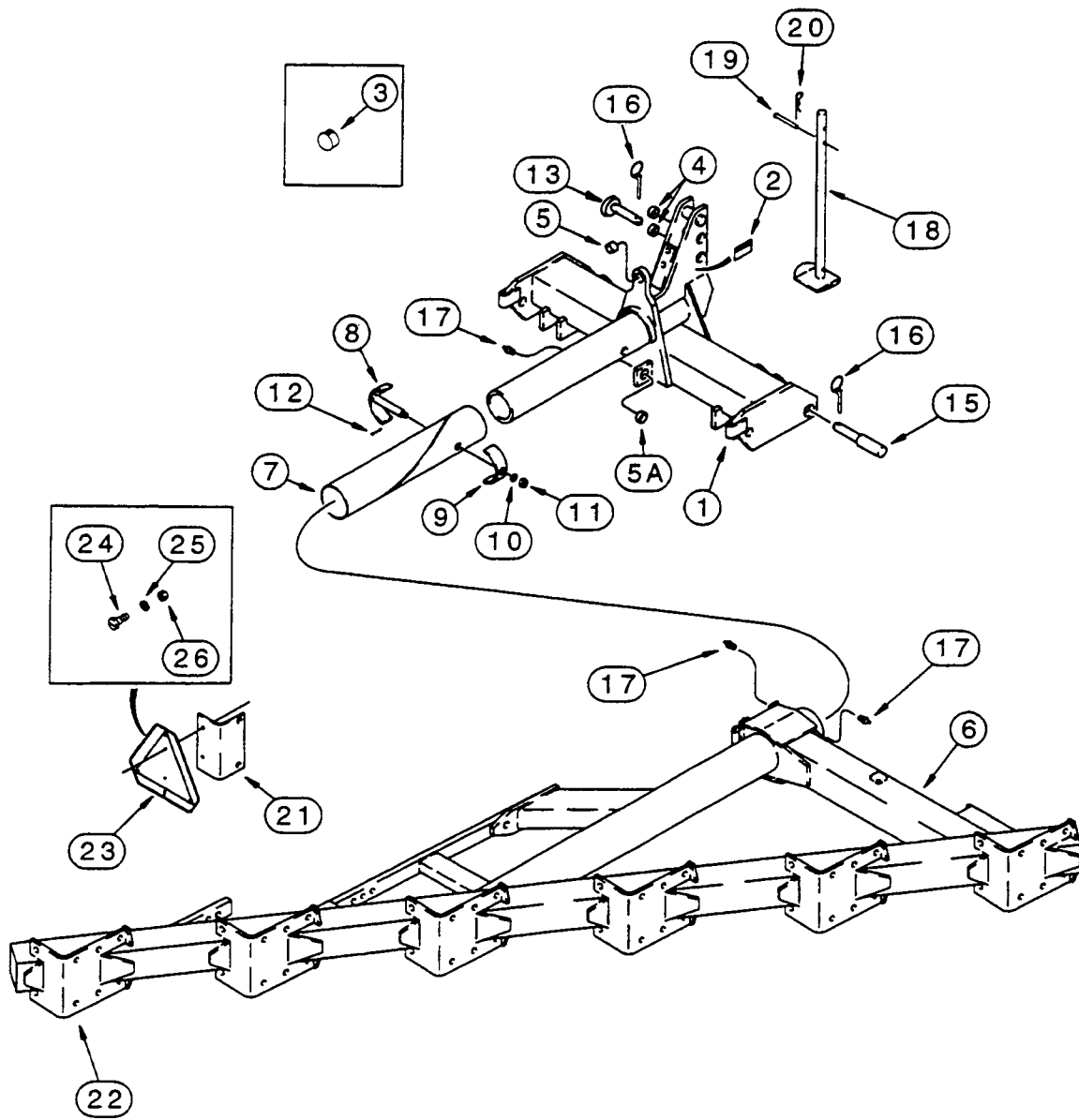
FRAME

REF	PART NO.	DESCRIPTION	QTY
		For 6 Furrow Plows	
		-CCD0025001	
1	I313366A1	Frame Assy, Front Main - Includes	1
2	I543301R1	Decal, Caution - Lift Links	1
	I439-11488	Pin, Clevis - 7/8 x 5-1/2; 2 (Not Illustrated)	2
	I651239R1	Washer - 29/32 x 1-1/2 x 1/4 (Not Illustrated)	14
	I496-21094	Washer - 15/16 x 1-3/4 x 3/16 (Not Illustrated)	2
	I432-1624	Pin, Cotter - 1/4 x 1-1/2 (Not Illustrated)	2
3	I1017987R1	Plug	1
4	I112718C1	Bushing	4
5	I112761C1	Bushing	1
5A	I112886C1	Bushing	1
6	I112751C5	Frame, Rear Main - For 6 Furrow 18 inch With Rigid and Spring Trip Beam	1
7	I542457R1	Tube, Bearing	1
8	I542459R1	Pin	1
9	I542458R1	Clamp	1
10	I495-81255	Washer - 25/32 x 1-1/2 x 11/64	1
11	I425-1212	Nut - 3/4	1
12	I432-820	Pin, Cotter - 1/8 x 1-1/4	1
13	I112680C2	Pin, Clevis - 1-1/4 x 5-5/8	1
14	I432-1632	Pin, Cotter - 1/4 x 2	2
15	I101137C1	Bar	2
16	I372907R91	Pin, Lock	2
17	I219-87	Fitting, Grease - 1/4 st x 9/16	3
18	I541399R1	Stand, Parking	1
19	I439-5844	Pin, Clevis - 1/2 x 2-3/4	1
20	I1980543C1	Pin, Cotter - 5/32	1
		<i>Continued</i>	



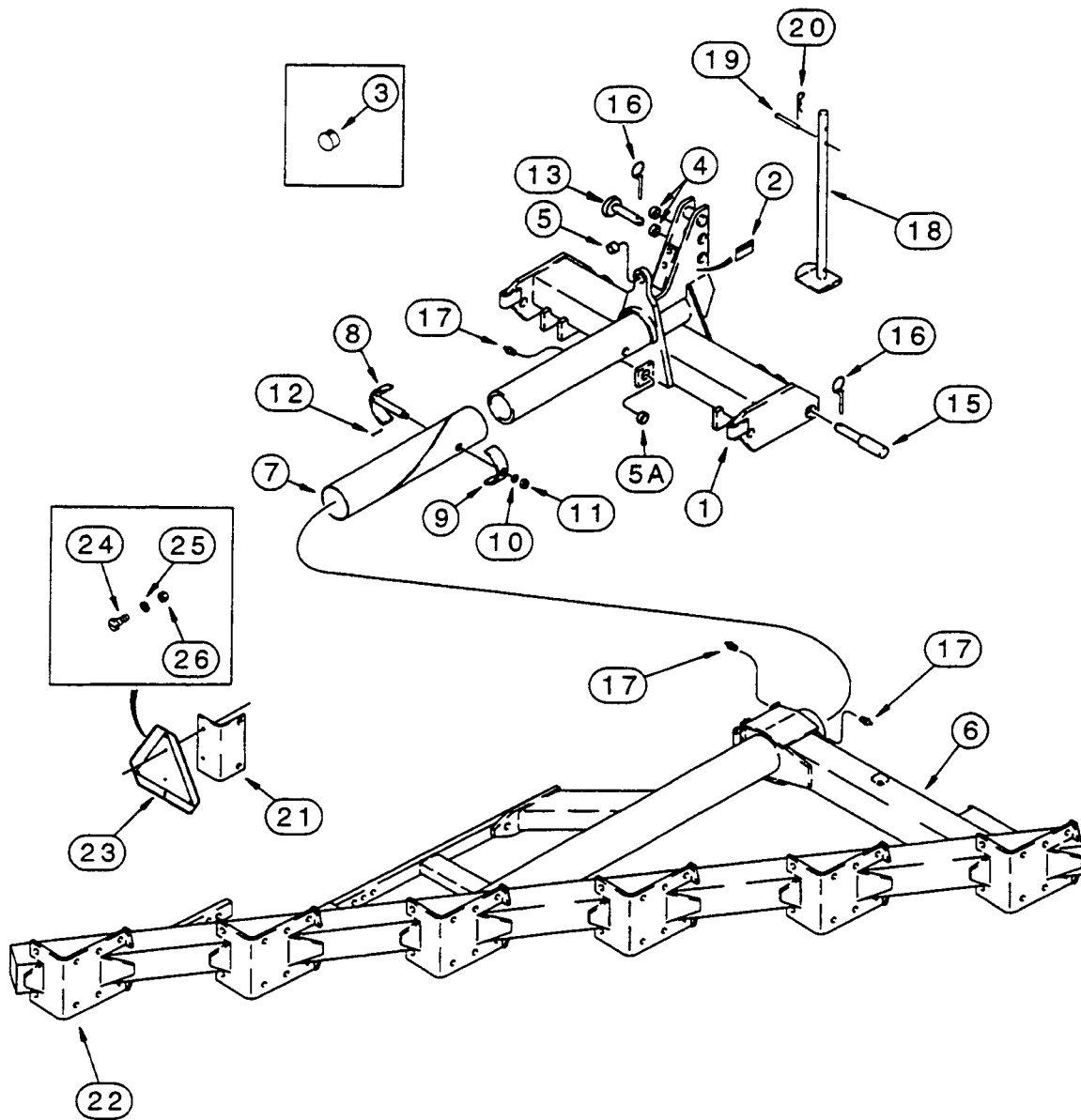
FRAME

REF	PART NO.	DESCRIPTION	QTY
		For 6 Furrow Plows	
		-CCD0025001	
21	I543924R1	Bracket, SMV Emblem and Reflector	1
22	I112675C2	Bracket, Beam Mounting Welded To Rear Main Frame	X
23	I311860A1	Emblem, Slow Moving Vehicle (Includes Decal)	1
24	I70-1108	Screw - No. 10 x 1/2	2
25	I495-81099	Washer - 13/64 x 1/2 x 1/16	2
26	I225-14110	Nut - No. 10	2



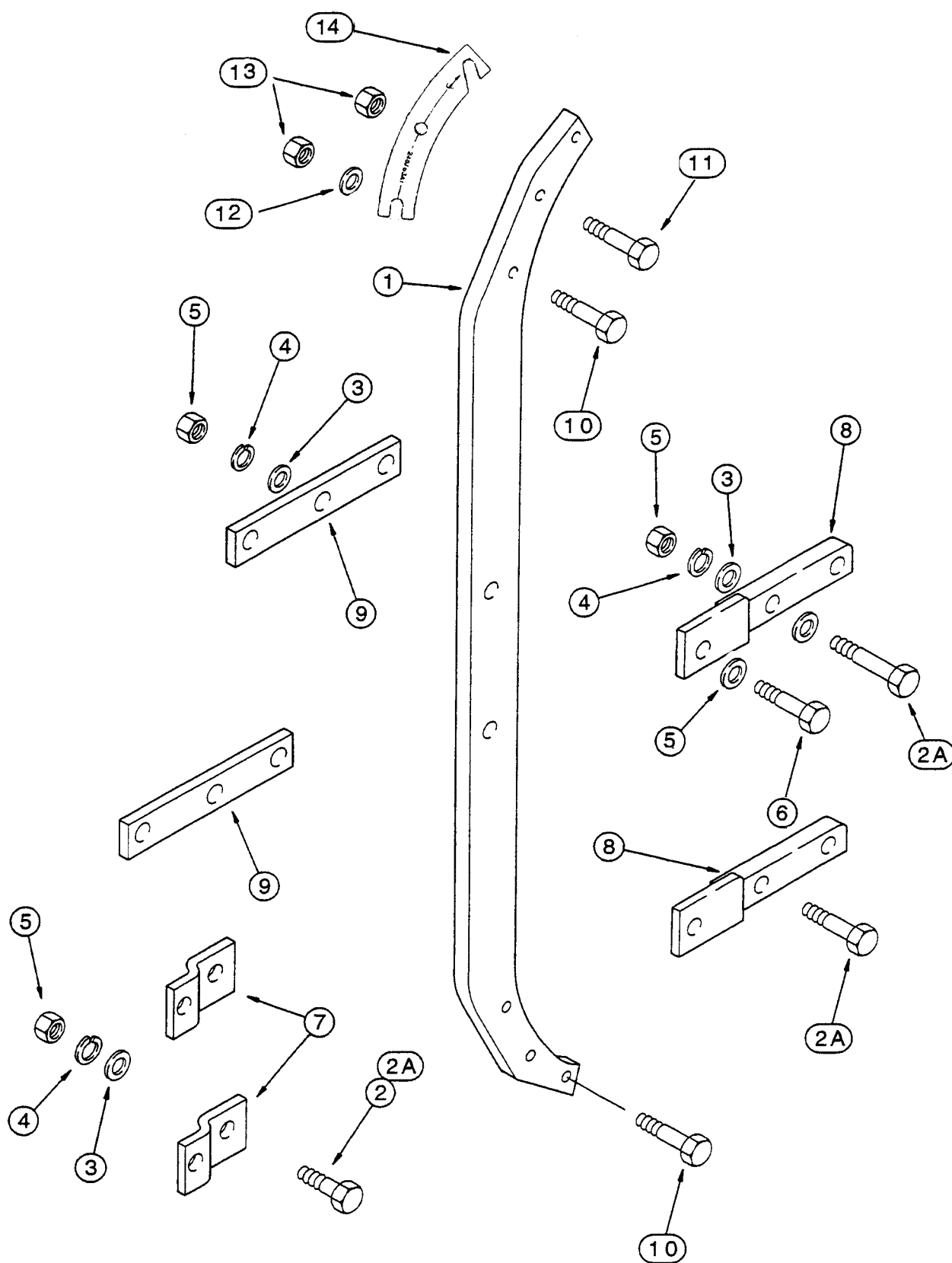
FRAME

REF	PART NO.	DESCRIPTION	QTY
		For 6 Furrow Plows	
		CCD0025001-	
1	I314148A1	Frame Assy, Main Front - Includes	1
2	I543301R1	Decal, Caution - Lift Links	1
	I439-11488	Pin, Clevis - 7/8 x 5-1/2; 2 (Not Illustrated)	2
	I651239R1	Washer - 29/32 x 1-1/2 x 1/4 (Not Illustrated)	14
	I496-21094	Washer - 15/16 x 1-3/4 x 3/16 (Not Illustrated)	2
	I432-1624	Pin, Cotter - 1/4 x 1-1/2 (Not Illustrated)	2
3	I1017987R1	Plug	1
4	I307401A1	Bushing - 1-1/4 x 1-5/8 x 3/4	4
4A	I337722A1	Bushing, Wear - 1-1/2 x 1-3/4 x 1 (Not Illustrated)	1
5	I112761C1	Bushing	1
5A	I112886C1	Bushing	1
6	I310502A1	Frame, Main Rear - For 6 Furrow 18 Inch With Rigid and Spring Trip Beam	1
7	I311213A1	Tube, Bearing	1
8	I542459R3	Pin	1
9	I112675C2	Bracket	1
10	I495-81255	Washer - 25/32 x 1-1/2 x 11/64	1
11	I425-1212	Nut - 3/4	1
12	I432-820	Pin, Cotter - 1/8 x 1-1/4	1
13	I316396A2	Pin, Headed - 1/1/4 x 6-7/64	1
15	I101137C1	Bar	2
16	I392181R1	Pin	3
		<i>Continued</i>	



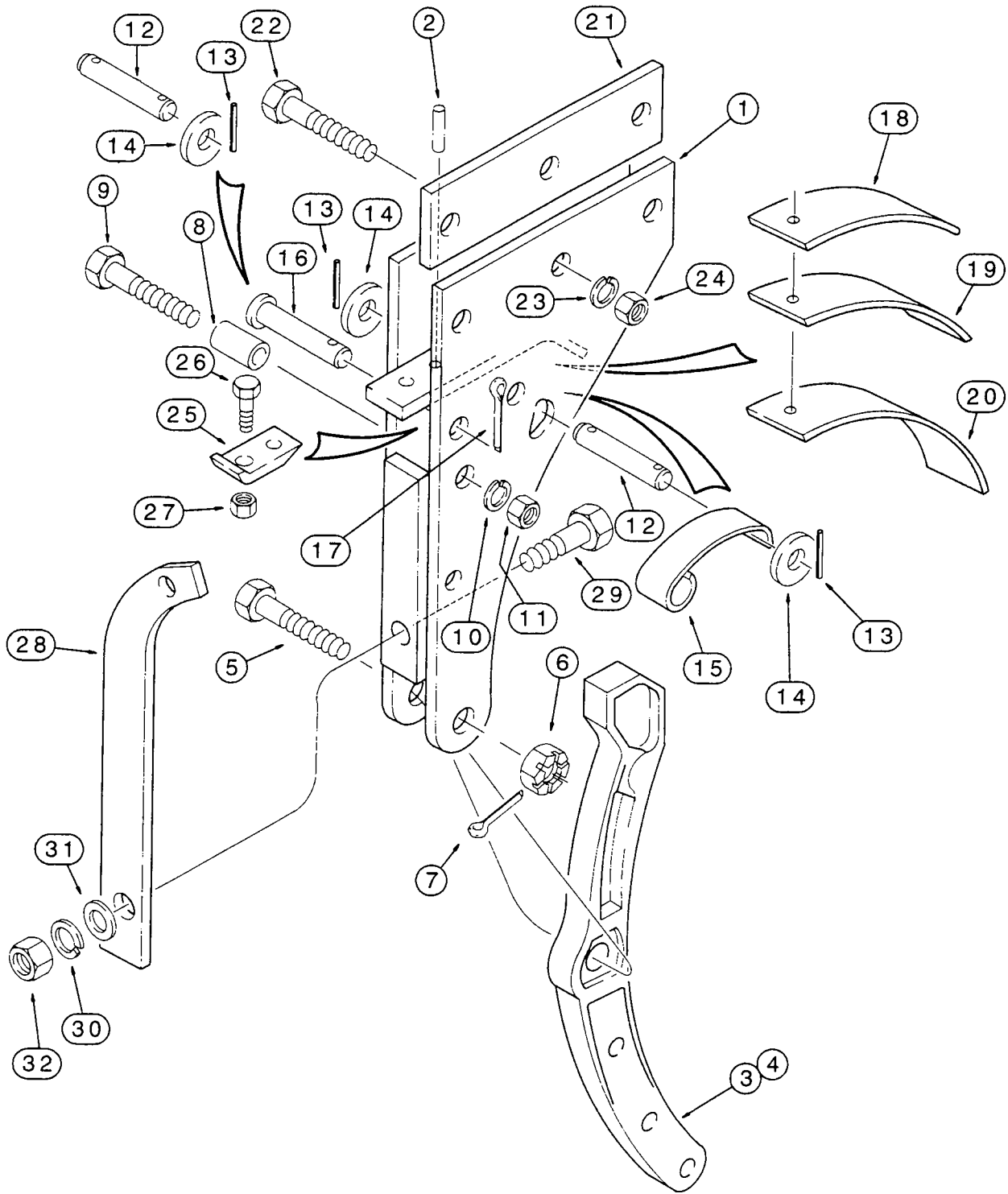
FRAME

REF	PART NO.	DESCRIPTION	QTY
		For 6 Furrow Plows	
		CCD0025001-	
17	I219-87	Fitting, Grease - 1/4 st x 9/16	3
18	I541399R1	Stand, Parking	1
19	I439-5844	Pin, Clevis - 1/2 x 2-3/4	1
20	I1980543C1	Pin, Cotter - 5/32	1
21	I543924R1	Bracket - SMV Emblem and Reflector	1
22	I112675C2	Bracket - Beam Mounting Welded to Rear Main Frame	X
23	I311860A1	Emblem - Slow Moving Vehicle (Includes Decal)	1
24	I70-1108	Screw - No. 10 x 1/2	2
25	I495-81099	Washer - 13/64 x 1/2 x 1/16	2
26	I225-14110	Nut - No. 10	2
27	I337715A1	Plate, End Cover (Not Illustrated)	1
28	I280-1478	Screw - 1/4 x 1/2	4



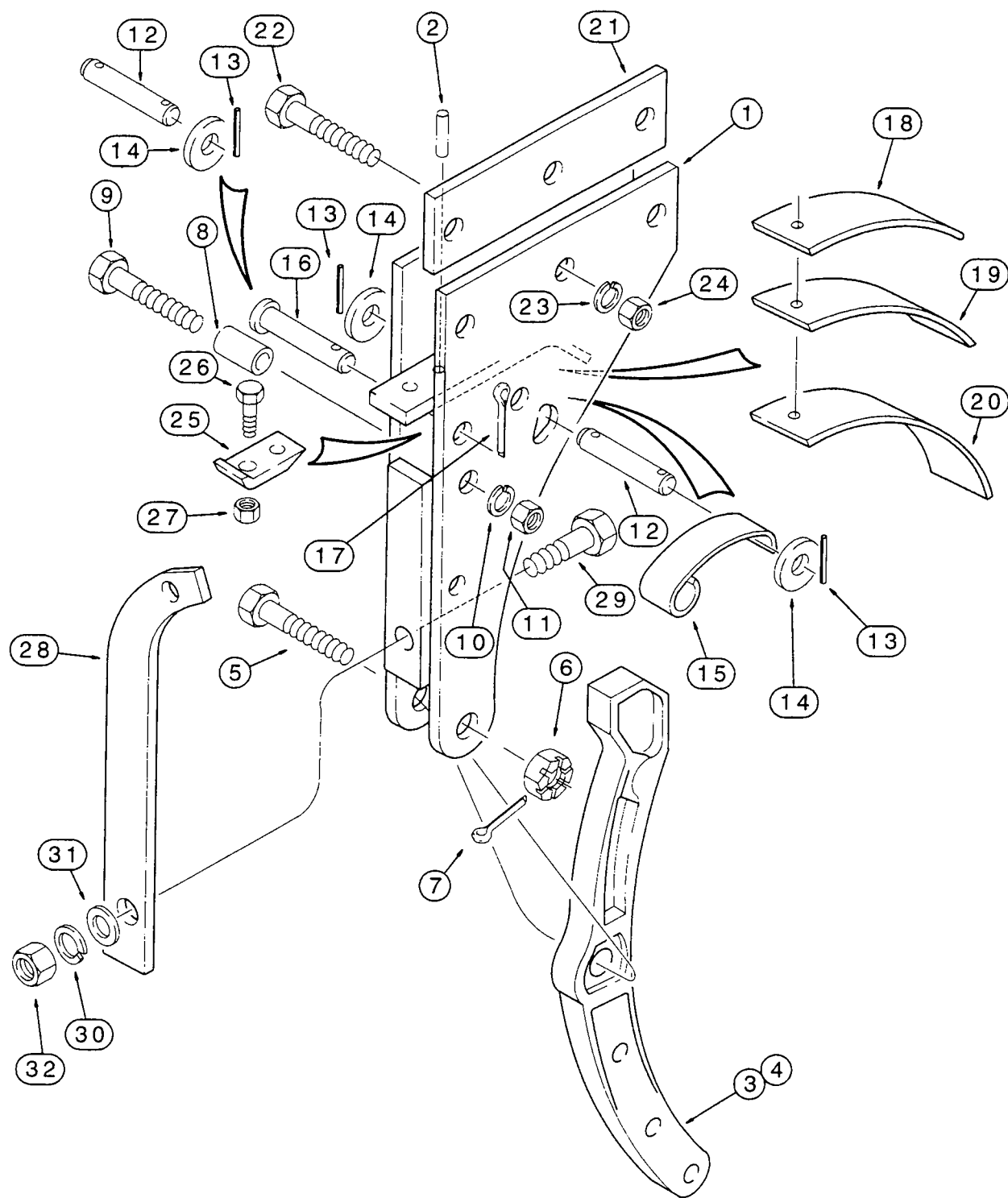
BEAM - RIGID

REF	PART NO.	DESCRIPTION	QTY
1	I490848R1	Beam, Ridge - *See Note	1
2	I413-1436	Bolt - 7/8 x 2-1/4 (If Used)	X
2A	I426-1456	Bolt - 7/8 x 3-1/2; 8	X
3	I496-21094	Washer -15/16 x 1-3/4 x 3/16	X
4	I492-11088	Washer, Lock 7/8 (If Used)	X
5	I232-53414	Nut, Special - 7/8 <i>Replaces : 231-53114</i>	X
6	I426-1464	Bolt - 7/8 x 4; 8	X
7	I490849R1	Strap, Hammer (If Used)	2
8	I224101C1	Bar, Beam Mounting With Block	2
9	I224104C1	Bar, Beam Mounting Without Block	2
10	I426-1056	Bolt - 5/8 x 3-1/2; 8	4
11	I426-1060	Bolt - 5/8 x 3-3/4; 8	2
12	I1256864C2	Washer	2
13	I1256884C1	Nut, Flange - 5/8; 8	X
14	I248163A1	Shim, Adjusting	X
		<i>Note: Quantity listed is per furrow.</i>	
		<i>Note: For replacement plow bottoms, shares, shins and landsides, refer to "Moldboard Plow Bottoms and Ripper Parts" catalog Bur 7-2230</i>	



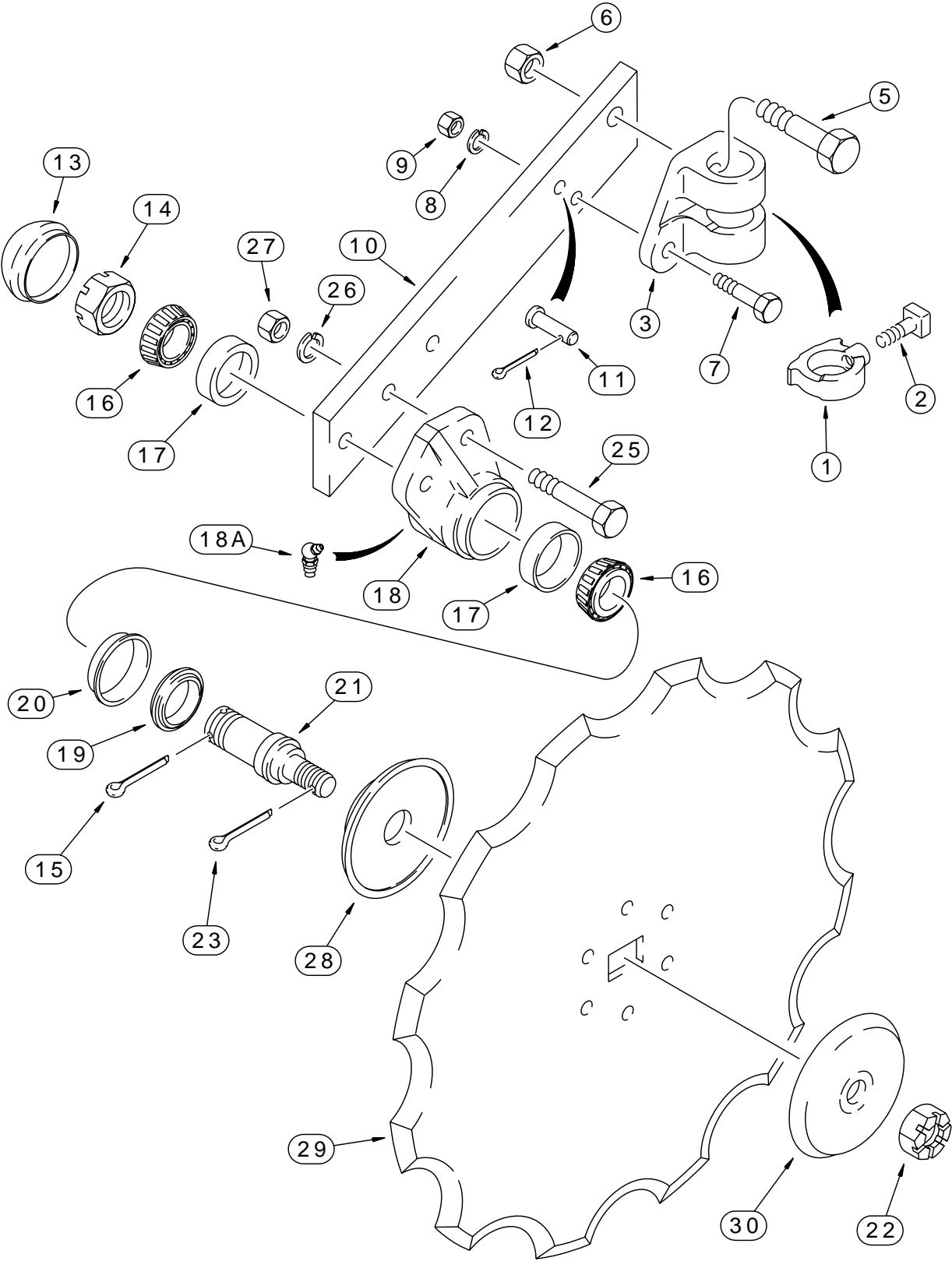
BEAM - TRIP

REF	PART NO.	DESCRIPTION	QTY
1	I541417R2	Bracket	2
2	I438-33224	Pin, Roll - 1/2 x 1-1/2	2
3	I465800R2	Beam, Trip (Right-hand) *See Note	1
4	I541422R1	Beam, Trip (Left-hand) Not Illustrated	1
5	I465799R2	Bolt	2
6	I425-1316	Nut - 1 NS	2
7	I432-1232	Pin, Cotter - 3/16 x 2	2
8	I522432R2	Spacer	2
9	I413-1052	Bolt - 5/8 x 3-1/4	2
10	I492-11062	Washer, Lock - 5/8	2
11	I425-1010	Nut - 5/8	2
12	I465801R1	Roller	X
13	I438-31624	Pin, Roll - 1/4 x 1-1/2	X
14	I522473R1	Washer	X
15	I465868R1	Spring	2
16	I439-11247	Pin, Clevis - 3/4 x 2-15/16; 2	2
17	I432-1624	Pin, Cotter - 1/4 x 1-1/2	2
18	I524452R1	Spring	2
19	I524453R1	Spring	2
20	I524454R1	Spring	2
21	I1337611C1	Spacer	4
22	I413-1456	Bolt - 7/8 x 3-1/2	6
23	I492-11088	Washer, Lock - 7/8	6
24	I425-1014	Nut - 7/8	6
		<i>Continued</i>	
		<i>Note: Quantity listed is per furrow.</i>	



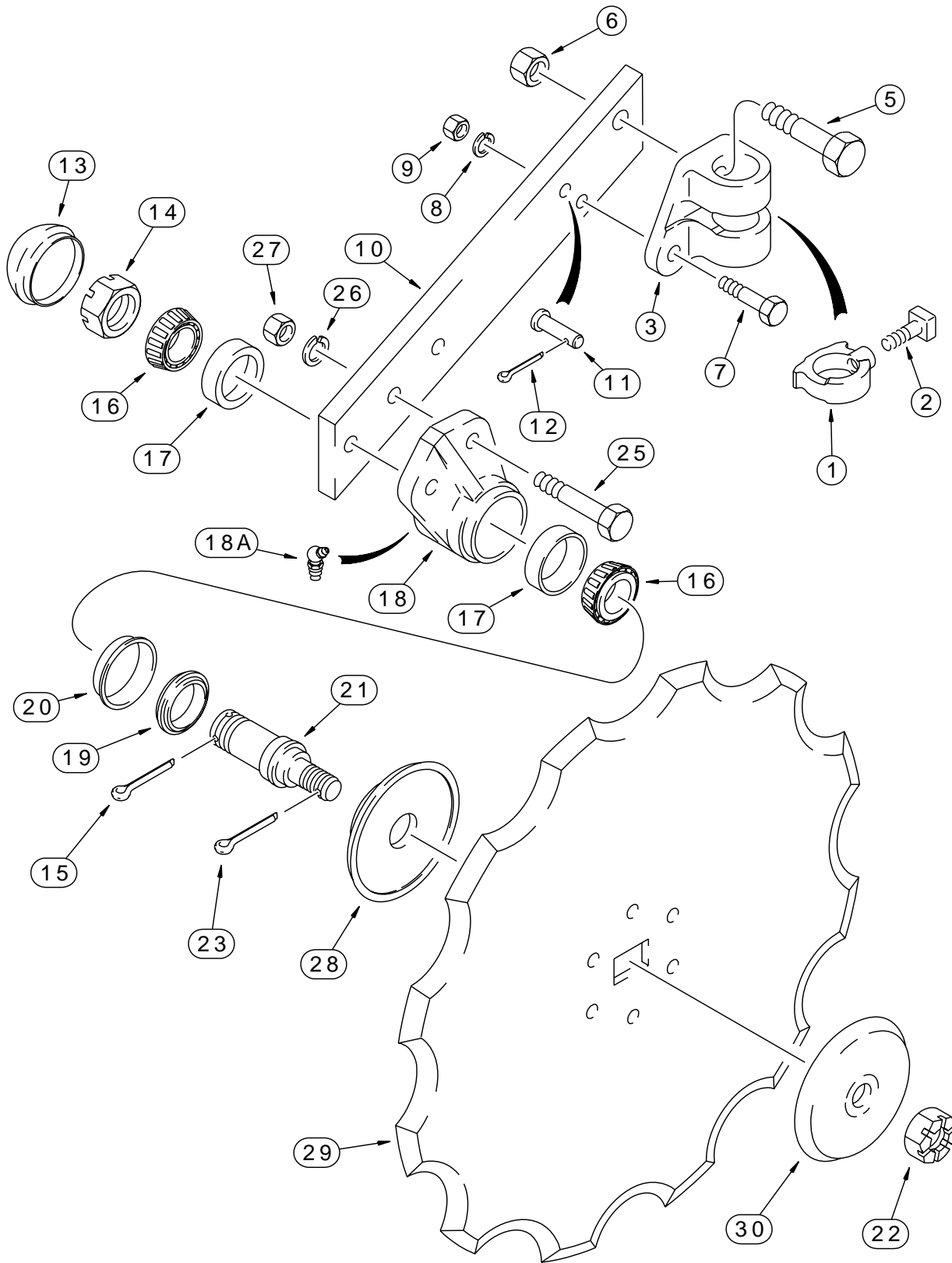
BEAM - TRIP

REF	PART NO.	DESCRIPTION	QTY
25	I468847R1	Clip	2
26	I413-836	Bolt - 1/2 x 2-1/4	2
27	I131-208	Nut, Lock - 1/2	2
28	I541384R2	Brace - Trip Unit 5/8 inch Thick (If Used)	1
28	I122916C1	Brace - Trip Unit 3/4 inch Thick (If Used)	1
29	I413-1448	Bolt - 7/8 x 3	4
30	I492-11088	Washer, Lock - 7/8	4
31	I496-21094	Washer - 15/16 x 1-3/4 x 3/16	4
32	I425-1014	Nut - 7/8	4
		<i>Note: Quantity listed is per furrow</i>	
		<i>Note: For replacement plow bottoms, shares, shins and landsides, refer to "Moldboard Plow Bottoms and Ripper Parts" catalog Bur 7-2230.</i>	



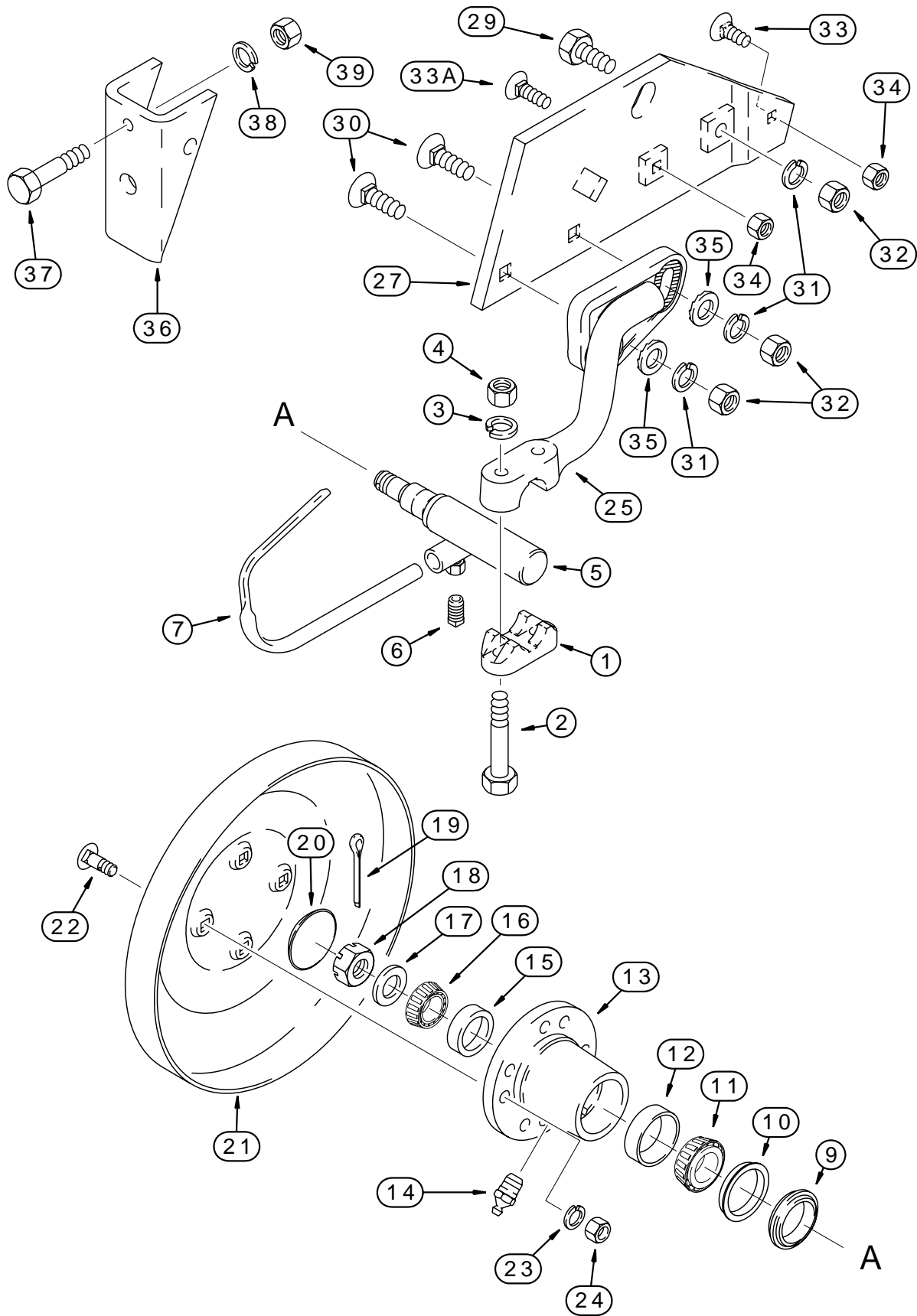
COULTERS - SIDE ARM ROLLING

REF	PART NO.	DESCRIPTION	QTY
1	I523345R21	Collar Assy - Stop Includes	2
2	I485-15020	Setscrew - 1/2 x 1-1/4	1
3	I462273R3	Bearing, Pivot - Coulter Arm (Right-hand)	1
4	I462272R3	Bearing, Pivot - Coulter Arm (Left-hand) Not Illustrated	1
5	I413-1028	Bolt - 5/8 x 1-3/4	2
6	I231-41110	Nut, Lock - 5/8	2
7	I414-728	Bolt - 7/16 NF x 1-3/4	2
8	I492-11044	Washer, Lock - 7/16	2
9	I425-117	Nut - 7/16 NF	2
10	I131517C92	Arm Assy - Includes	2
11	I439-1718	Pin, Clevis - 7/16 x 1-1/8; 2	1
12	I432-1216	Pin, Cotter - 3/16 x 1	1
	NSS	Spindle Assy (Left-hand)	1
21	I541480R1	Spindle	1
22	I429-1314	Nut, Slotted - 7/8 NF; 8	1
23	I432-1224	Pin, Cotter - 3/16 x 1-1/2	1
24	I541481R1	Housing - (Left-hand) Not Illustrated	1
25	I413-836	Bolt - 1/2 x 2-1/4	4
26	I492-11050	Washer, Lock - 1/2	4
27	I425-108	Nut - 1/2	4
28	I523020R3	Support - Inner - Used with 17 inch Blade	2
28	I59158C1	Support - Inner - Used with 20 inch Blade	2
		<i>Continued / / Suite</i>	



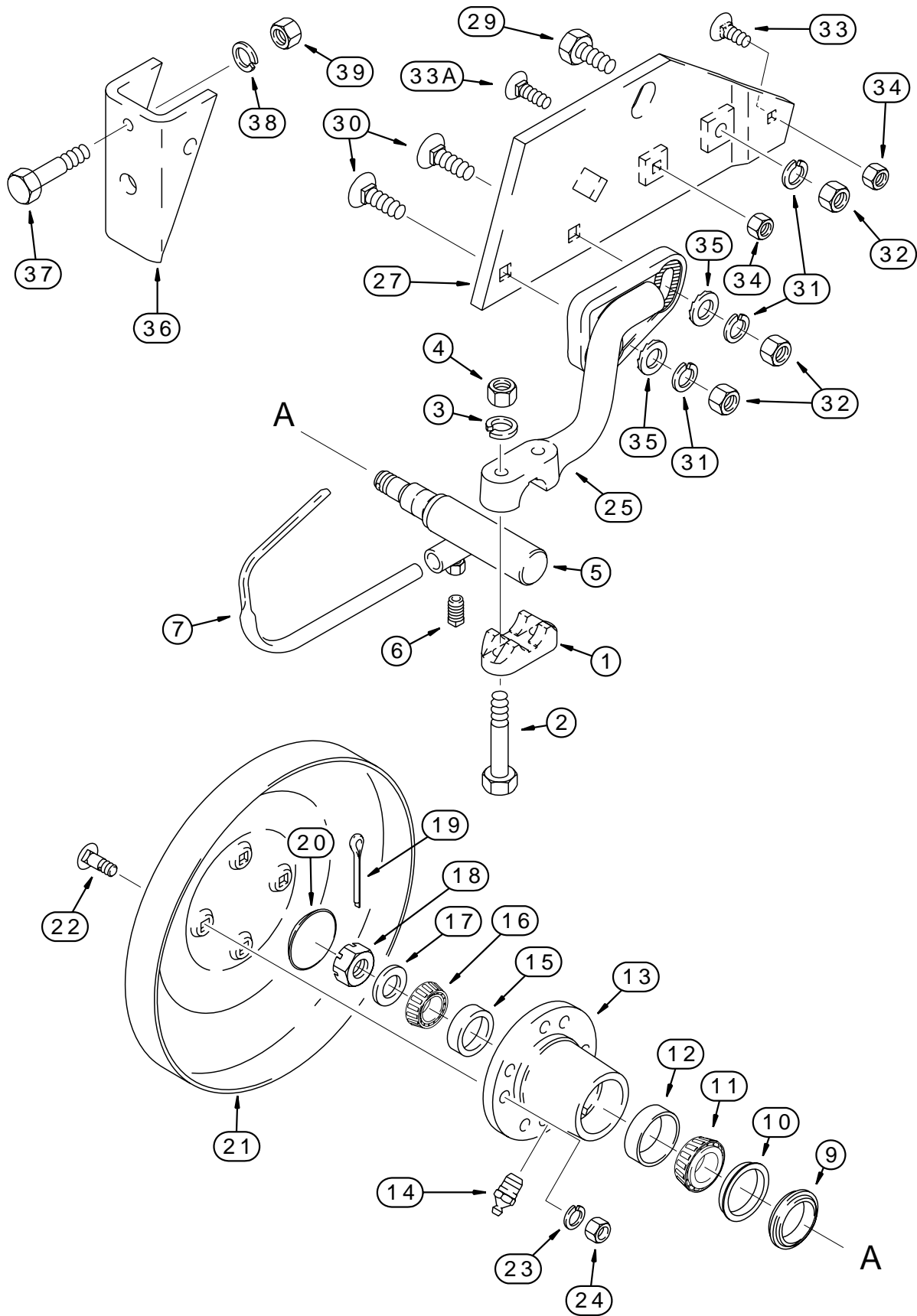
COULTERS - SIDE ARM ROLLING

REF	PART NO.	DESCRIPTION	QTY
29	I469191R3	Disc, Wheel - Rippled Edge, 17 inch	2
29	I474252R2	Disc, Wheel - Rippled Edge, 20 inch	2
30	I523021R2	Support - Outer (Used with 17 inch blade)	2
30	I59159C1	Support - Outer (Used with 20 inch blade)	2
<i>Note: See page 9-41 for coultter shanks and clamps for mounting to main frame.</i>			



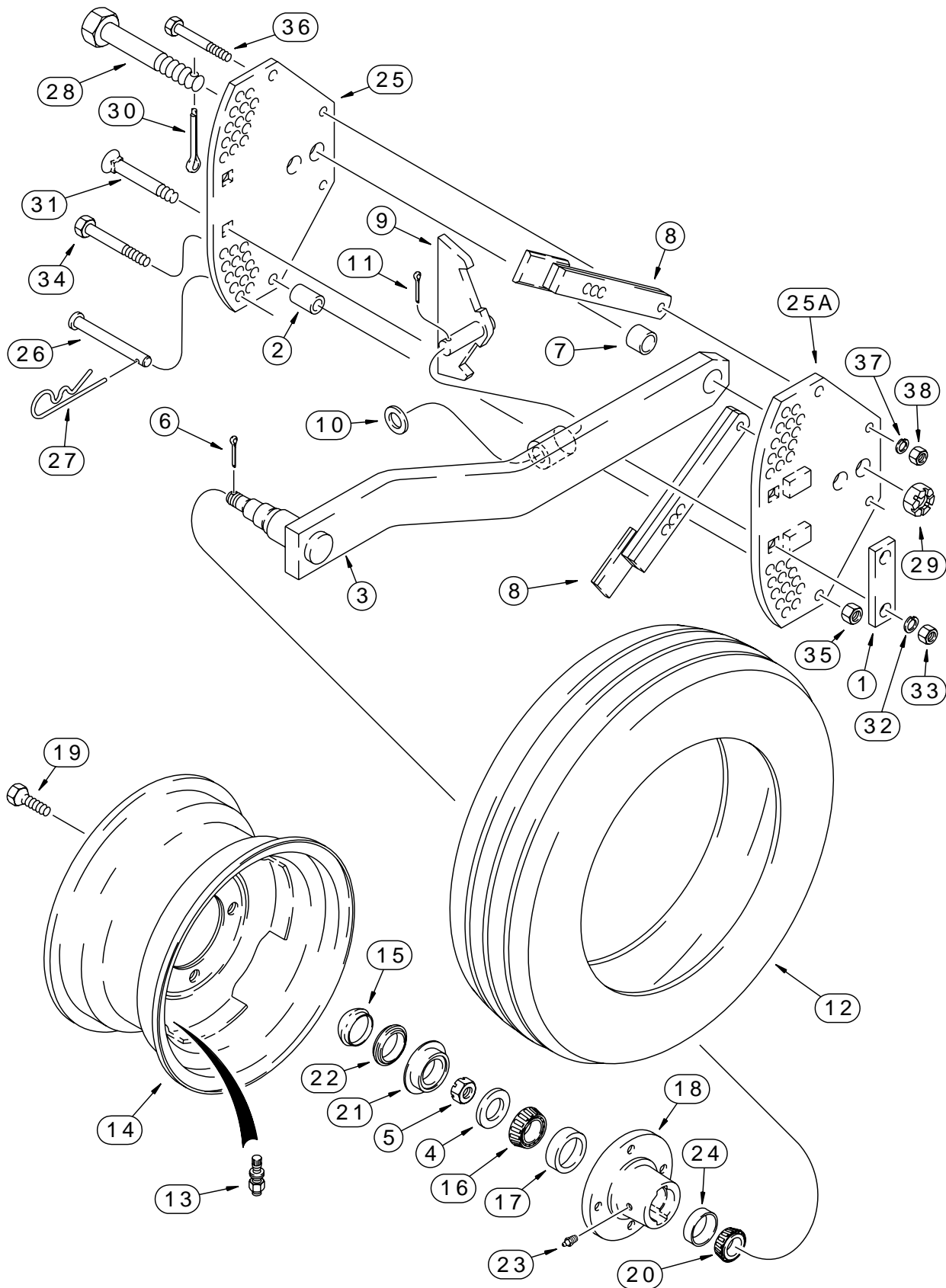
WHEEL - REAR FURROW

REF	PART NO.	DESCRIPTION	QTY
1	I542737R1	Cap	2
2	I426-856	Bolt - 1/2 x 3-1/2; 8	4
3	I492-21050	Washer, Lock - 1/2	4
4	I429-108	Nut - 1/2; 8	4
5	I478216R91	Spindle	2
6	I485-15012	Setscrew - 1/2 x 3/4	2
7	I478223R1	Scraper - (Right-hand)	1
8	I478222R1	Scraper - (Left-hand) Not Illustrated	1
9	I472221R91	Seal	2
10	I472222R1	Sleeve	2
11	I651818R91	Cone	2
12	I651817R1	Bearing, Cup	2
13	I122711C1	Hub	2
14	I219-87	Fitting, Grease - 1/4 st x 9/16	2
15	I651814R1	Cup	2
16	I651815R91	Cone	2
17	I495-81042	Washer - 25/32 x 1-1/2 x 7/64	2
18	I69442D	Nut, Slotted - 3/4 NF	2
19	I432-1024	Pin, Cotter - 5/32 x 1-1/2	2
20	I41-3044	Plug, Expansion - 70 mm	2
21	I542488R1	Wheel - Rear Furrow	2
22	I420-3720	Bolt, Plow - 7/16 x 1-1/4, 8	8
23	I492-11044	Washer, Lock - 7/16	8
24	I429-107	Nut - 7/16; 8	8
25	I488423R1	Support - Axle (Right-hand)	1
26	I542895R1	Support - Axle (Left-hand) Not Illustrated	1
		<i>Continued</i>	



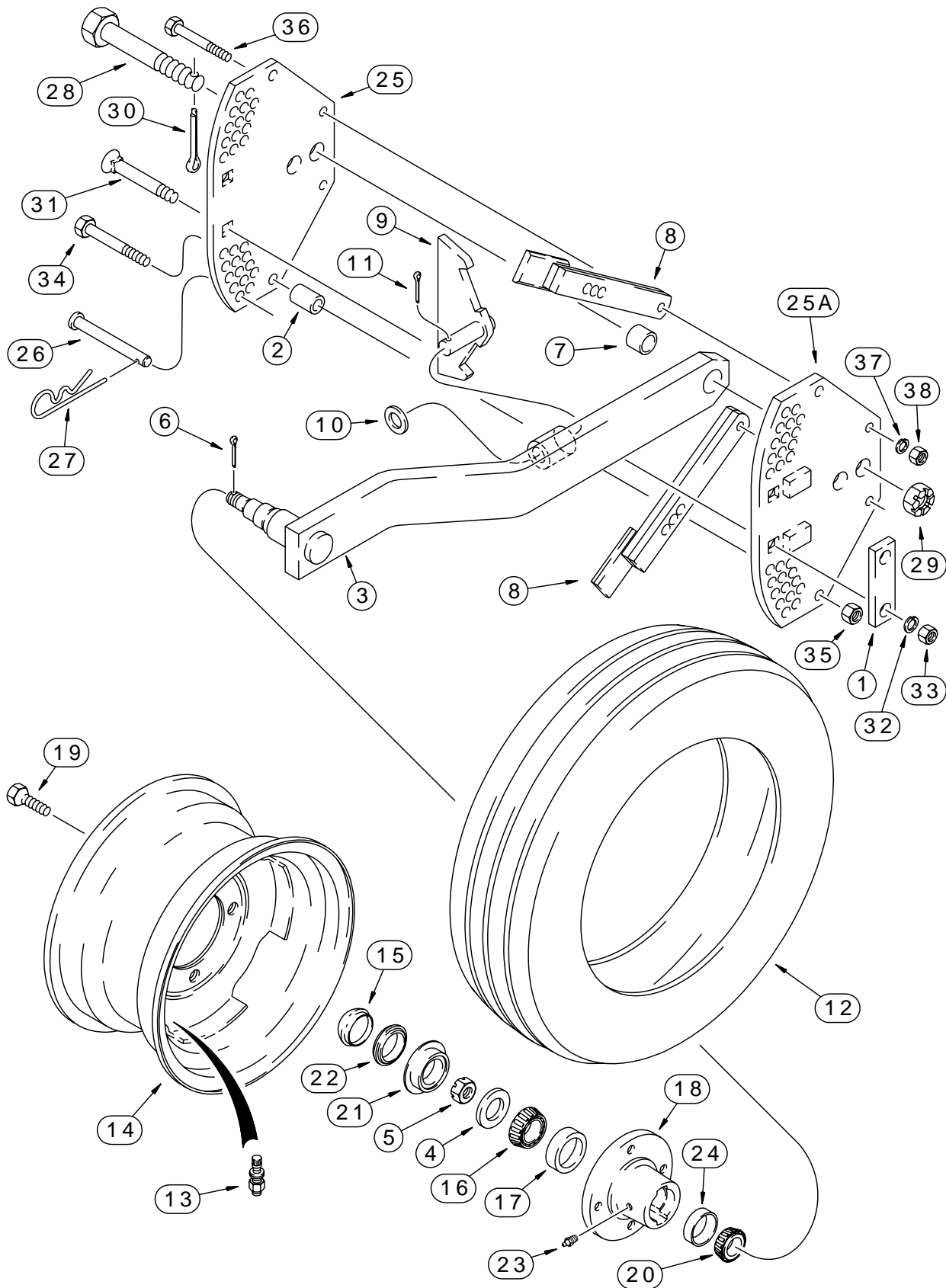
WHEEL - REAR FURROW

REF	PART NO.	DESCRIPTION	QTY
27	I542489R1	Landside - Right-hand	1
28	I542490R1	Landside - Left-hand (Not Illustrated)	1
29	I413-1048	Bolt - 5/8 x 3	2
30	I419-21048	Bolt, Plow - 5/8 x 3	4
31	I492-11062	Washer, Lock - 5/8	6
32	I425-1010	Nut - 5/8	6
33	I62178C1	Bolt, Plow - 7/16 x 1-3/4, 8	2
33A	I62179C1	Bolt, Plow - 7/16 x 2-1/8, 8	2
34	I231-1407	Nut, Lock - 7/16	4
35	I523011R1	Washer	4
	I542499R91	Package - Machinery Item Consists Of	1
36	I542495R1	Stop	2
37	I413-1072	Bolt - 5/8 x 4-1/2	2
38	I492-11062	Washer, Lock - 5/8	2
39	I425-1010	Nut - 5/8	2



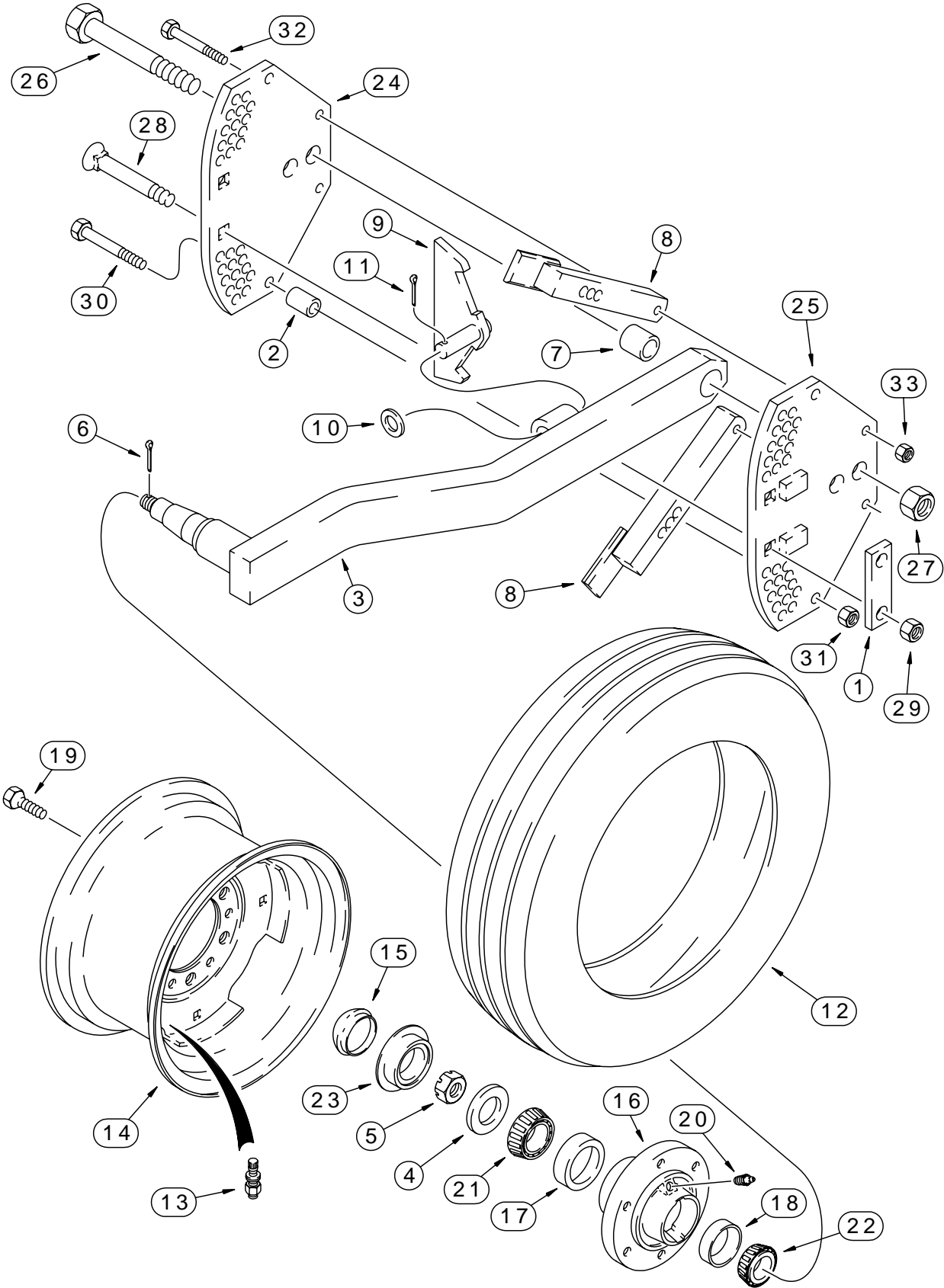
WHEEL - GAUGE

REF	PART NO.	DESCRIPTION	QTY
<p style="text-align: center;">For 4 and 5 Furrow Plows</p> <p style="text-align: center;">Built Prior To 1980</p>			
1	I463070R1	Retainer	1
2	I463069R1	Spacer	2
3	I467497R93	Arm	1
4	I369857R1	Washer - 25/32 x 1/4 x 1/8	1
5	I425-1312	Nut, Slotted - 3/4 NF	1
6	I432-824	Pin, Cotter - 1/8 x 1-1/2	1
7	I463063R1	Bushing - Gauge Wheel Arm - For 4 Furrow 18 inch and 5 Furrow 16 and 18 inch	1
8	I477908R92	Bar	2
9	I463072R12	Latch	1
10	I495-81057	Washer - 29/32 x 1-1/2 x 7/64	1
11	I432-1624	Pin, Cotter - 1/4 x 1-1/2	1
12	REF	Tire - 9.5L x 14 High Flotation Tubeless	1
13	I810768C1	Valve Stem	1
14	I455169R92	Wheel - 15 x 4-1/2 (If Used)	1
14	IT25852	Wheel - 14 x 5 (If Used)	1
15	I651194R1	Cap	1
16	I651815R91	Cone	1
17	I651814R1	Cup	1
18	I472220R2	Hub - Four Bolt Mount	1
19	I351079R1	Bolt, Special - 1/2 NF x 15/16	4
20	I651818R91	Cone	1
21	I472222R1	Sleeve	1
22	I472221R91	Seal	1
23	I219-87	Fitting, Grease - 1/4 st x 9/16	1
		<i>Continued</i>	



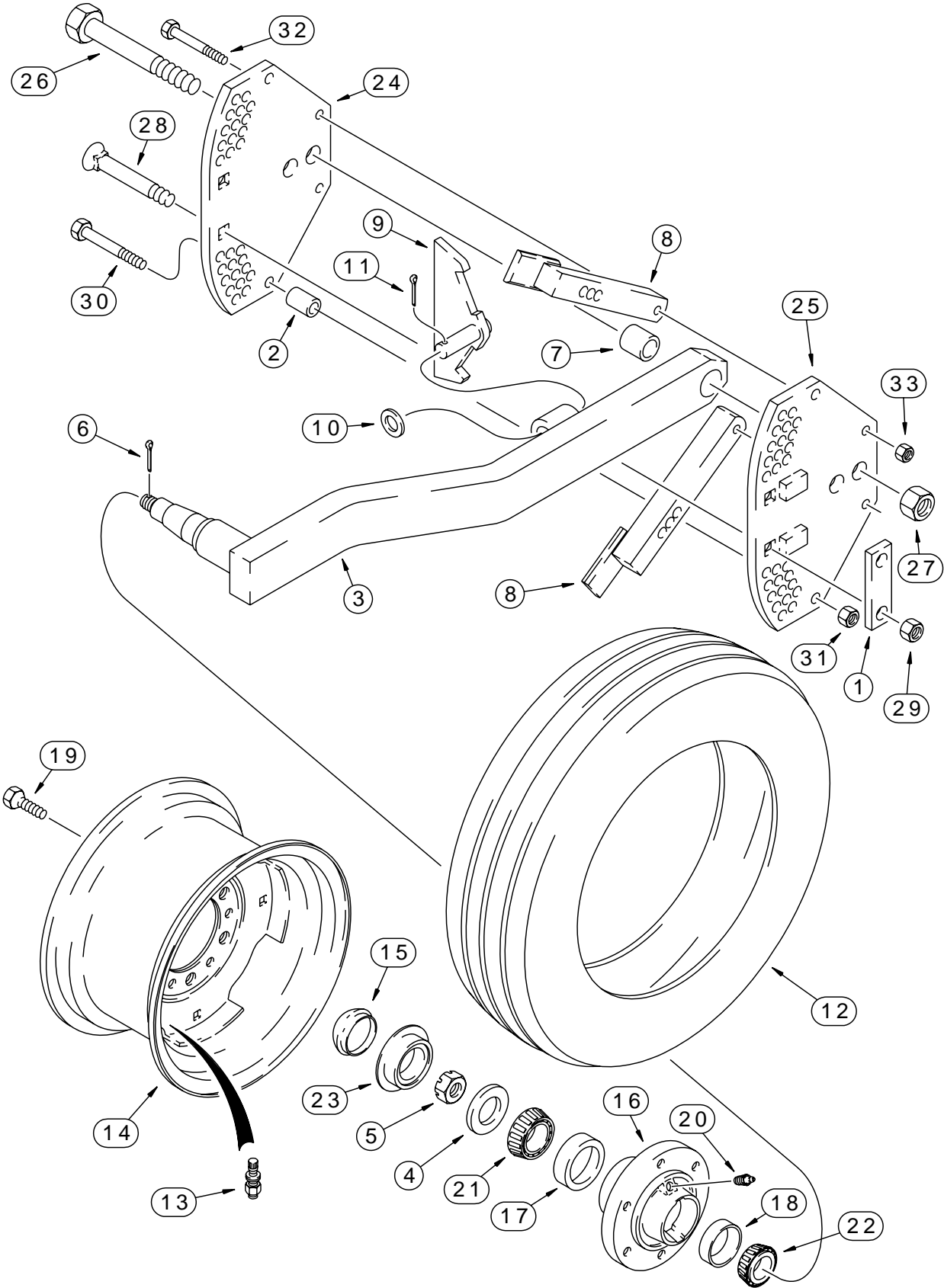
WHEEL - GAUGE

REF	PART NO.	DESCRIPTION	QTY
		For 4 and 5 Furrow Plows	
		Built Prior To 1980	
24	I651817R1	Bearing, Cup	1
25	I477910R1	Plate - Gauge Wheel Attaching Without Stops	1
25A	I131762C1	Plate - Gauge Wheel Attaching With Stops	1
26	I543124R1	Pin, Clevis - 1/2 x 2-3/4	2
27	I1970957C1	Pin, Cotter - 3/16	2
28	I463154R2	Bolt, Special	1
29	I425-1316	Nut - 1 NS	1
30	I432-1228	Pin, Cotter - 3/16 x 1-3/4	1
31	I633661R1	Bolt, Carriage - 5/8 x 3	2
32	I492-11062	Washer, Lock - 5/8	2
33	I425-1010	Nut - 5/8	2
34	I413-1044	Bolt - 5/8 x 2-3/4	2
35	I232-41110	Nut, Lock - 5/8	2
36	I24-844	Bolt - 1/2 x 2-3/4	2
37	I492-11050	Washer, Lock - 1/2	2
38	I425-108	Nut - 1/2	2



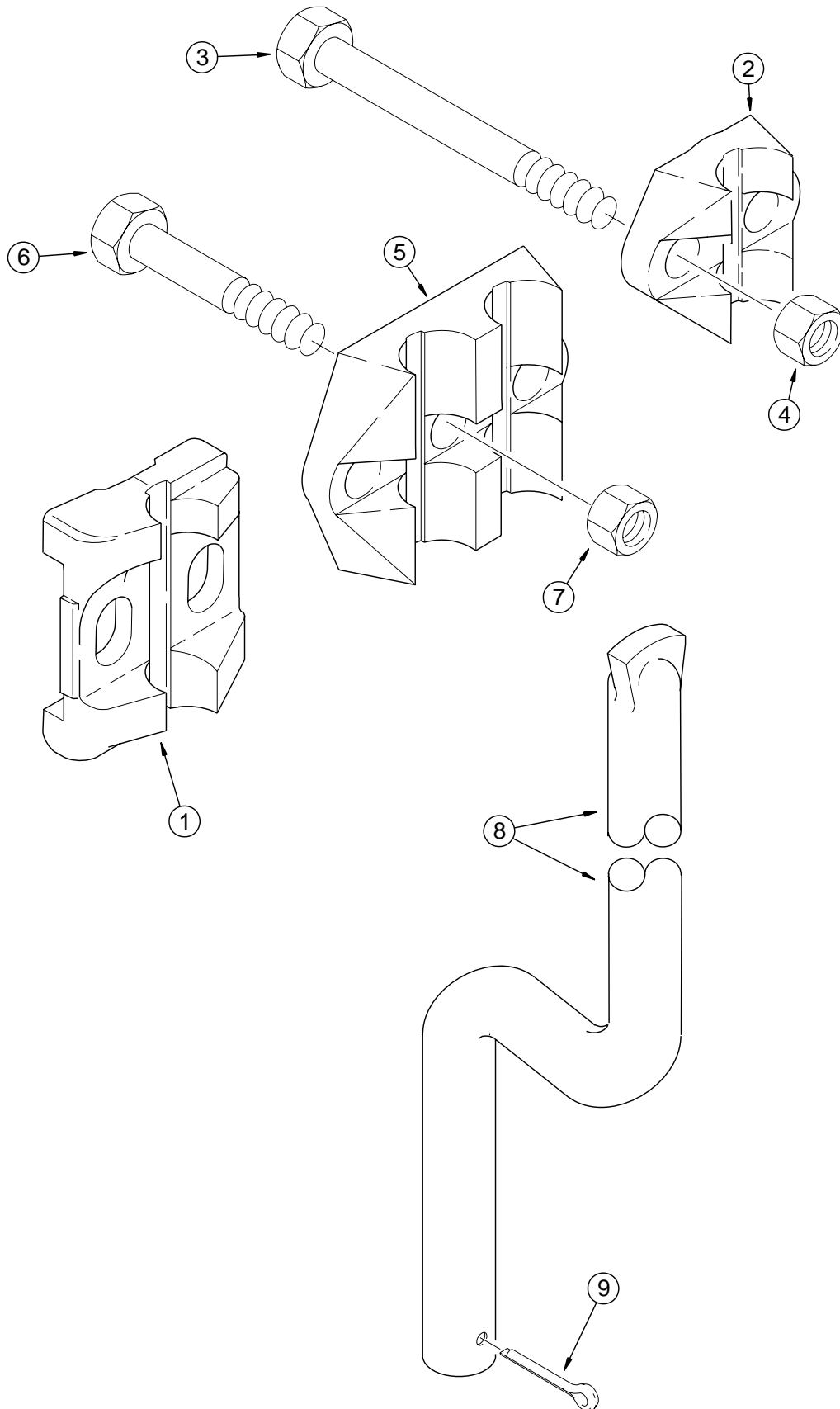
WHEEL - GAUGE

REF	PART NO.	DESCRIPTION	QTY
		For 4 and 5 Furrow Plows Built 1980 and After	
		For 6 Furrow Plows	
1	I490855R1	Retainer	1
2	I490862R1	Spacer	2
3	I1337969C1	Arm	1
4	I469873R1	Washer	1
5	I70120D	Nut, Slotted - 7/8	1
6	I432-832	Pin, Cotter - 1/8 x 2	1
7	I490858R1	Bushing	1
8	I131718C1	Bar	2
9	I463072R12	Latch	1
10	I495-81056	Washer - 29/32 x 1-1/2 x 3/64 Replaces I495-81057	1
11	I432-1624	Pin, Cotter - 1/4 x 1-1/2	1
12	REF	Tire - 9.5L x 14 High Flotation Tubeless	1
12	REF	Tire - 9.5L x 15 High Flotation Tubeless	1
13	I810768C1	Valve Stem	1
14	I481344R91	Wheel - 14 x 8	1
14	IA57879	Wheel - 15 x 8	1
15	I224066C1	Cap	1
16	I606468R21	Hub Assy - Includes Six Bolt Mount	1
17	I651817R1	Bearing, Cup	1
18	I663558R1	Bearing, Cup - 2-57/64 OD	1
19	I549962R1	Bolt, Special - 1/2 NF x 1-5/32	6
20	I219-87	Fitting, Grease - 1/4 st x 9/16	1
	I123096A2	Kit - Heavy Duty Wheel Bearing Consists Of	



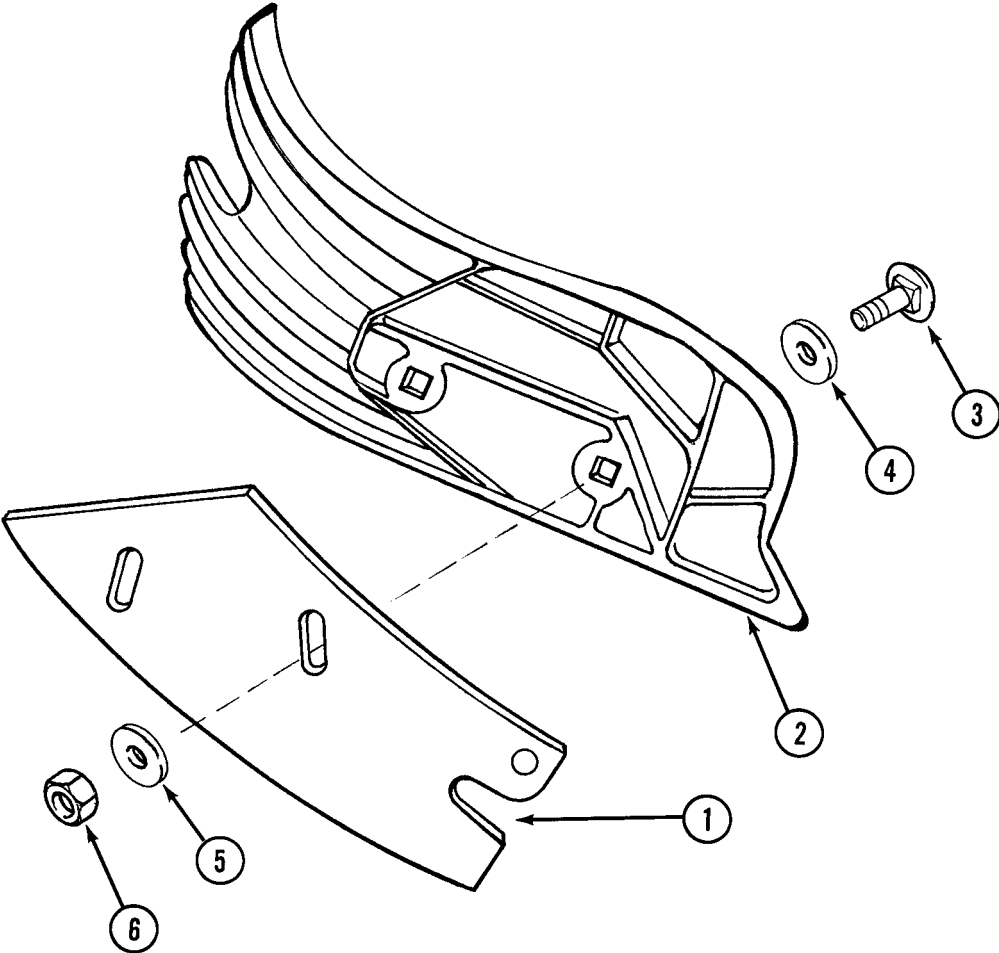
WHEEL - GAUGE

REF	PART NO.	DESCRIPTION	QTY
		For 4 and 5 Furrow Plows Built 1980 and After	
		For 6 Furrow Plows	
21	I651818R91	Cone	1
22	I663557R91	Bearing, Cone - 1-5/8 ID	1
23	I606556R91	Seal	1
24	I131763C1	Plate - Gauge Wheel Attaching Without Stops	1
25	I131762C1	Plate - Gauge Wheel Attaching With Stops	1
26	I413-1680	Bolt - 1 x 5	1
27	I231-41116	Nut, Lock - 1 in	1
28	I419-31256	Bolt, Plow - 3/4 x 3-1/2	2
29	I231-42112	Nut, Lock - 3/4	2
30	I413-1056	Bolt - 5/8 x 3-1/2	4
31	I231-41110	Nut, Lock - 5/8	4
32	I426-856	Bolt - 1/2 x 3-1/2; 8	2
33	I231-4218	Nut, Lock - 1/2	2
	I123096A2	Kit - Heavy Duty Wheel Bearing Consists Of	



SHANKS AND CLAMPS - COULTER

REF	PART NO.	DESCRIPTION	QTY
1	I524457R3	Clamp	2
2	I524492R1	Cap - One Shank	2
3	I414-10112	Bolt - 5/8 NF x 7	2
4	I425-1110	Nut - 5/8 NF	2
5	I462687R1	Clamp - Two Shank	2
6	I413-1072	Bolt - 5/8 x 4-1/2	3
7	I425-1010	Nut - 5/8	3
8	I522434R1	Shank - Coulter	2
9	I432-2040	Cotter Pin - 5/16 x 2-1/2	2



TRASH PLATES AND BRACKETS

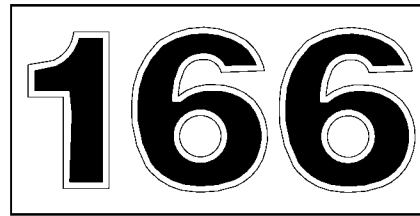
REF	PART NO.	DESCRIPTION	QTY
1	I484687R1	Bracket - Trash Plate (Left-hand) Shown	1
1	I484688R1	Bracket - Trash Plate (Right-hand) Shown	1
2	I483682R1	Trash Plate (Left-hand) Shown	1
2	I476811R1	Trash Plate (Right-hand) Not Shown	1
3	I419-3624	Bolt, Plow - 3/8 x 1-1/2	2
4	I495-81009	Washer - 15/32 x 1 x 1/8	2
5	I495-81135	Washer - 13/32 x 1 x 7/64	2
6	I425-106	Nut - 3/8	2

This Page Intentionally Blank

①



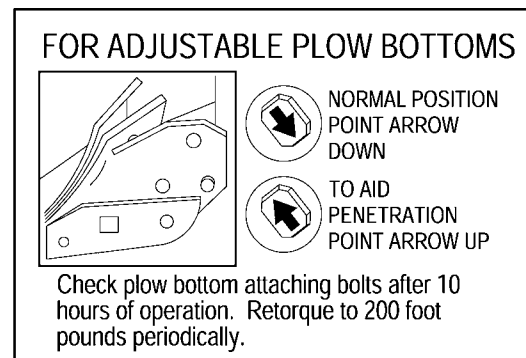
②



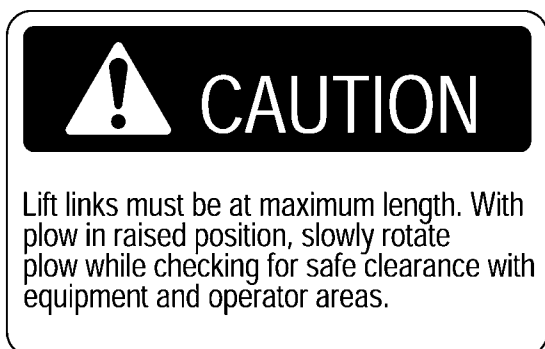
③



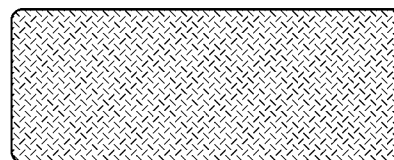
④



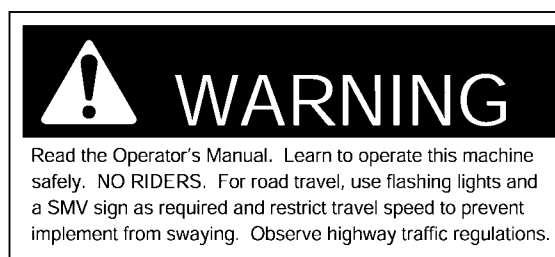
⑤



⑥



⑦



DECALS

REF	PART NO.	DESCRIPTION	QTY
			1
1	519500	DECAL - Art's-Way Manufacturing Co. Inc., Logo, 4 x 7 inch	1
2	519520	DECAL - 166 Plow	1
3	I122878C1	DECAL - Warning - Auto Trip Plow	1
4	I2753186R2	DECAL - Bottom Instructions	1
5	I543301R1	DECAL - Caution - Lift Links	1
6	I1284374C1	DECAL - Red Reflector	2
7	I220321A1	DECAL - Warning - General	1

ART'S-WAY MANUFACTURING CO., INC. TECHNICAL MANUALS

Manuals are available from your local dealer or Art's-Way Manufacturing Co., Inc. for the operation, service and repair of your machine. For prompt convenient service, contact your local dealer for assistance in obtaining the manuals for your machine.

Your local dealer can expedite your order for operator manuals, illustrated parts catalogs, service manuals, and maintenance records.

Always give the Machine Name, Model and Serial Number so your local dealer can provide the correct manuals for your machine.

NOTE: Art's-Way Manufacturing Co., Inc. reserves the right to make improvements in design or changes in specifications at any time without incurring any obligation to install them on units previously sold.

Produced And Published In The U.S.A.

Art's-Way Manufacturing Co., Inc.
Hwy 9 West – PO Box 288
Armstrong, IA. 50515 U.S.A