



Art's-Way Manufacturing Co., Inc.

Model JR50 & JR75
Compact Grinder Mixer

Illustrated Parts List
642550

Issued June 2018



This symbol means ATTENTION! BECOME ALERT! YOUR SAFETY IS INVOLVED. The message that follows the symbol contains important information about your safety. Carefully read the message. Make sure you fully understand the causes of possible injury or death.

IF THIS MACHINE IS USED BY AN EMPLOYEE, IS LOANED, OR IS RENTED, MAKE SURE THAT THE OPERATOR UNDERSTANDS THE TWO INSTRUCTIONS BELOW.

BEFORE THE OPERATOR STARTS THE ENGINE:

GIVE INSTRUCTIONS TO THE OPERATOR ON SAFE AND CORRECT USE OF THE MACHINE.

MAKE SURE THE OPERATOR READS AND UNDERSTANDS THE OPERATOR'S MANUAL FOR THIS MACHINE.

⚠ WARNING

IMPROPER OPERATION OF THIS MACHINE CAN CAUSE INJURY OR DEATH.

BEFORE STARTING THE ENGINE, DO THE FOLLOWING:

1. READ THE OPERATOR'S MANUAL.
2. READ ALL SAFETY DECALS ON THE MACHINE.
3. CLEAR THE AREA OF OTHER PERSONS.
4. LEARN AND PRACTICE SAFE USE OF MACHINE CONTROLS IN A SAFE AND CLEAR AREA BEFORE YOU OPERATE THIS MACHINE ON A JOB SITE.

It is your responsibility to observe pertinent laws and regulations and to follow manufacturer's instructions on machine operation and maintenance.

See your Authorized Art's-Way Manufacturing Co., Inc. dealer or Art's-Way Manufacturing Co., Inc. for additional operator's manuals, illustrated parts catalogs, and service manuals.

TO THE OWNER

Congratulations on the purchase of your new Art's-Way Compact Grinder Mixer. You have selected a top quality machine that is designed and built with pride to ensure you have many years of efficient and reliable service.

Many people have worked on the design, production, and delivery of this Compact Grinder Mixer. The information in this manual is based on the knowledge, study, and experience through years of specializing in the manufacturing of farm machinery. This manual is designed to provide you with important information regarding safety, maintenance, and machine operation so you can and will get the best possible performance from your Compact Grinder Mixer.

Even if you are an experienced operator of this or similar equipment, we ask that you read this manual before operating this Compact Grinder Mixer. The way you operate, adjust, and maintain this unit will have much to do with its successful performance. Any further questions you may have about this product of Art's-Way equipment should be directed to your local Art's-Way dealer or to Art's-Way Manufacturing Co., Inc. Armstrong, Iowa, 50514, (712) 864-3131.

SPECIFICATIONS AND DESIGN ARE SUBJECT TO CHANGE WITHOUT NOTICE

Art's-Way Manufacturing Co., Inc. is continually making product improvements. In doing so, we reserve the right to make changes and/or add improvements to our products without obligation for the equipment previously sold.

Modifications to this Compact Grinder Mixer may affect the performance, function, and safety of its operation. Therefore, no modifications are to be made without the written permission of Art's-Way Manufacturing Co., Inc. Any modification made without the written permission of Art's-Way Mfg. Co. Inc. shall void the warranty of this product.

In the interest of continued safe operation of this Compact Grinder Mixer, pay particular attention to the safety alert symbol(s) throughout this manual.

Art's-Way Manufacturing Co., Inc. STATEMENT OF PRODUCT LIABILITY

Art's-Way Manufacturing Co., Inc. recognizes its responsibility to provide customers with a safe and efficient product. Art's-Way Manufacturing Co., attempts to design and manufacture its products in accordance with all accepted engineering practices effective at the date of design. This statement should not be interpreted to mean that our products will protect against the user's own carelessness or failure to follow common safety practices nor will Art's-Way Manufacturing Co., be liable for any such act. In addition, Art's-Way Manufacturing Co., assumes no liability for any altered product or any modified product by users or anyone other than an authorized dealer.

IMPORTANT WARRANTY INFORMATION

The warranty for this Compact Grinder Mixer appears on page 6 of this manual. In order to establish proper warranty registration, the Warranty Registration must be completed and returned to the factory. Failure to comply with this requirement will result in invalidating the warranty!

LIMITATIONS OF THIS MANUAL

This manual contains operating instructions for your JR50 & JR75 Compact Grinder Mixer only. Any mention of other machinery in this manual other than the JR50 & JR75 Compact Grinder Mixer is for reference only. This manual does not replace nor is it to be used for any machinery that may be attached to or used in conjunction with the JR50 & JR75 Compact Grinder Mixer.

PARTS & SERVICE

As the purchaser of your new grinder mixer, it is very important to consider the following factors:

A. Original Quality

B. Availability of Service Parts

C. Availability of Adequate Service Facilities

Art's-Way Manufacturing Co., Inc. has an excellent dealership network ready to answer any questions you may have about your grinder mixer. Parts for your machine may be ordered through our dealers. When placing a parts order, please have the **model** and **serial number** ready. This will allow the dealer to fill your order as quickly as possible.

For your convenience, we have provided this space for you to record your model number, serial number, and the date of purchase, as well as your dealer's name and address.



SERIAL NO.

MODEL NO.

Manufactured by
Art's Way Manufacturing Co., Inc.
Armstrong IA USA

TABLE OF CONTENTS

TO THE OWNER	1
SPECIFICATIONS AND DESIGN ARE SUBJECT TO CHANGE WITHOUT NOTICE	1
Art's-Way Manufacturing Co., Inc. STATEMENT OF PRODUCT LIABILITY	1
IMPORTANT WARRANTY INFORMATION	1
LIMITATIONS OF THIS MANUAL	1
PARTS & SERVICE	2
TABLE OF CONTENTS	3-5
LIMITED WARRANTY	6
SAFETY FIRST	7
NOTICES OF DANGER, WARNING, AND CAUTION	7
<u>Safety Instructions</u>	8
GENERAL	8
BEFORE OPERATING	9
DURING OPERATION	9
MAINTENANCE SAFETY	9
HYDRAULIC SAFETY	10
TRANSPORTATION SAFETY	10
STORAGE SAFETY	10
TIRE SAFETY	11
ASSEMBLY SAFETY	11

<u>TABLE OF CONTENTS</u>	
<u>NAME</u>	<u>PAGE</u>
HITCH ASSEMBLY	14
MIX MILL & AUGER ASSEMBLY	16
WINDOWS & ETC. ASSEMBLY	18
HAMMERMILL OUTER ASSEMBLY	20
MILL MIX DRIVE ASSEMBLY	22
FRONT SHIELD ASSEMBLY	24
AIR SYSTEM ASSEMBLY	26
HYDRAULIC ASSEMBLY	28
DISCHARGE ELBOW ASSEMBLY	30
DISCHARGE SWING ASSEMBLY	32
DISCHARGE HOOD ASSEMBLY	34
SHIELDS & ADDITIONAL PARTS ASSEMBLY	36
MIXING AUGER ASSEMBLY	38
WEIGHBARS AND GEARBOX ASSEMBLY	40
WEIGHBARS AND GEARBOX ASSEMBLY (CONTINUED)	42
AUGER FEEDER MOUNT ASSEMBLY	44
AUGER FEEDER ASSEMBLY	46

**SEE OPERATORS MANUAL
FOR
WARRANTY INFORMATION**

SAFETY FIRST

SAFETY INSTRUCTIONS

"A careful operator is the best insurance against an accident." Quote from the National Safety Council.

Most accidents can be prevented if the operator:

1. Fully understands how the machine functions.
2. Can anticipate situations which may produce problems.
3. Can make necessary corrections before problems develop.

**THIS SYMBOL MEANS ATTENTION!
BECOME ALERT!
YOUR SAFETY IS INVOLVED!**



- Universal Safety Alert Symbol

The American Society of Agricultural Engineers has adopted the Universal Safety Alert Symbol as a way to identify areas of potential danger if the equipment is not operated correctly. Please be alert whenever you see this symbol in the manuals or on your grinder mixer.

Art's-Way Manufacturing Co., Inc. strives to make our equipment as safe as possible. The Art's-Way JR50 & JR75 Compact Grinder Mixer conforms to applicable safety standards at the time of manufacturing. A safety conscious equipment operator makes an effective accident-prevention program complete.

Safety features and instructions for the grinder mixer are detailed in the Safety Guidelines section of this Operator's Manual. It is the responsibility of the owner to ensure that all operators read and understand the manual before they are allowed to operate the Grinder Mixer. (Occupational Safety and Health Administration (OSHA) regulations 1928.57).

NOTICES OF DANGER, WARNING, AND CAUTION

Signal Words: Note the use of signal words **DANGER**, **WARNING**, and **CAUTION** on the grinder mixer and in this manual. The appropriate signal word for each has been selected using the following guidelines:

DANGER

Indicates a hazardous situation which, if not avoided, will result in death or serious injury.

WARNING

Indicates a hazardous situation which, if not avoided, could result in death or serious injury.

CAUTION

Indicates a potentially hazardous situation which, if not avoided, could result in minor or moderate injury.

NOTICE

NOTICE is used to address practices not related to physical injury.

SAFETY INSTRUCTIONS

Safety instructions (or equivalent) signs indicate specific safety-related instructions or procedures.

Note: Contains additional information important to a procedure and will be found within the regular text body of this manual.

SAFETY INSTRUCTIONS

GENERAL

Most work related accidents are caused by failure to observe basic safety rules or precautions. An accident can often be avoided by recognizing potentially hazardous situations before an accident occurs. As you operate and maintain the Grinder Mixer you must be alert to potential hazards. You should also have the necessary training, skills, and tools to perform any assembly procedure.

Improper operation and/or maintenance of this unit could cause a dangerous situation that results in injury or death.

Do not use this unit until you read and understand the information contained in this manual. Do not use this equipment for anything other than its intended purpose.



Safety precautions and warnings are provided in this manual and on the unit. If these hazard warnings are not heeded, bodily injury or death could occur to you or to other persons.

Art's-Way Manufacturing Co., Inc. cannot anticipate every possible circumstance that might involve a potential hazard. The warnings in this manual and on the product are, therefore, not all-inclusive. If a method of operation not specifically recommended by us is used, you must satisfy yourself that it is safe for you and for others. You should also ensure that the unit will not be damaged or be made unsafe by the methods that you choose.

The information, specifications, and illustrations in this manual are based on the information that was available at the time this material was written and can change at any time.

Safety Alert Symbols



death.

This is the safety alert symbol. It is used to alert you to potential personal injury hazards. Obey all safety messages that follow this symbol to avoid possible injury or

This manual contains DANGERS, WARNINGS, CAUTIONS, NOTICES, SAFETY INSTRUCTIONS, and NOTES which must be followed to prevent the possibility of improper service, damage to the equipment, personal injury, or death. The following key words call the readers attention to potential hazards.

Hazards are identified by the "Safety Alert Symbol" and followed by a signal word such as "DANGER", "WARNING", or "CAUTION".

**SAFETY
INSTRUCTIONS**

Remember:

"The Best Operator is a Safe Operator"

CAUTION



Read and understand the operator's manual and all the safety decals before operating the grinder mixer. Review all safety instructions with all operators annually.

BEFORE OPERATING

SAFETY
INSTRUCTIONS

Do not wear loose fitting clothing as it may catch in moving parts.



Make sure all guards and shields are installed, including the tractor power take-off (PTO) master shield, before starting or operating the grinder mixer.



Be sure that the correct implement driveline parts are used and that they are properly secured.

Lower the lifter wheels when the grinder mixer is not in use.

Install safety chain when attaching the grinder mixer to the tractor.



Clear the area of bystanders, especially children, when making repairs, adjustments, or performing maintenance on the grinder mixer.



Do not allow riders.

Put all tractor and machine controls in “neutral” and disengage the PTO before starting. Follow the starting instructions according to the OEM tractor manual.



Operate the grinder mixer only while seated on the tractor seat.



Make sure the unit is adequately supported with safety blocks or safety stands when changing tires or performing maintenance.

DURING OPERATION

CAUTION



Entanglement Hazard
Keep hands, feet, hair, and clothing away from moving parts. Wait for all movement to stop before approaching equipment.

Before making adjustments:

1. Shut off the tractor,
2. Set parking brake,
3. Put machine in neutral, and
4. Remove key while making adjustments.



Keep all shields and guards in place and in good working condition.



Keep all bystanders, especially children, away from the grinder mixer while in operation.



Do not allow riders while the grinder mixer is in operation.



Do not attempt to unclog, clean, or adjust the grinder mixer while it is running.



Stay away from overhead power lines. Electrocution can occur even without direct contact.



Keep all hydraulic lines, fittings, and couplers tight and free of leaks. (Refer to Safety Guidelines – Hydraulic Safety).



Use caution when ascending or descending on the grinder mixer. Wet shoes or boots are slippery.

MAINTENANCE SAFETY

SAFETY
INSTRUCTIONS

Follow all operating, maintenance, and safety instructions found in this Manual.



Before servicing, adjusting, repairing, or unclogging the machine, always make sure the tractor engine is stopped, key in your pocket, the machine is lowered to the ground, all controls are placed in neutral, the parking brake is set, and all the moving parts have stopped.



Use sufficient tools, jacks, and hoists that have the capacity for the job.



Use support blocks or safety stands when changing tires or performing maintenance.



Follow good shop practices of keeping the service area clean and dry, and use adequate light for the job at hand.



Before applying pressure to the hydraulic system, make sure all lines, fittings, and couplers are tightly secured and in good condition.



Make sure all shields/guards are in place and properly secured when performing maintenance.

HYDRAULIC SAFETY

SAFETY INSTRUCTIONS

Follow all operating, maintenance, and safety instructions found in this Manual.

Make sure components in the hydraulic system are kept clean and in good working condition.



Relieve pressure from the hydraulic system before servicing or disconnecting from the tractor.



Keep all hydraulic lines, fittings, and couplers tightly secured and free of leaks.



Replace any worn, cut, abraded, flattened, or crimped hoses.



Do not make any temporary repairs to the hydraulic lines, fittings, or hoses using tape, clamps, or cement. The hydraulic system operates under extremely high pressure and temporary repairs may fail suddenly and create a hazardous/dangerous situation.



Wear proper hand and eye protection when searching for a high-pressure hydraulic leak. Use a piece

of wood or cardboard as a backstop instead of hands to identify and isolate a leak. If injured by a concentrated high-pressure stream of hydraulic fluid, seek medical attention immediately. Serious infection or toxic reaction can develop if hydraulic fluid penetrates the surface of the skin.



Before applying pressure to the system, make sure all components are tight and that the hydraulic lines, hoses, and couplings are not damaged.

TRANSPORTATION SAFETY

SAFETY INSTRUCTIONS

Follow all operating and safety instructions found in this manual when transporting this equipment.

Make sure the grinder mixer complies with all local regulations regarding transporting equipment on public roads and highways.



Make sure the Slow Moving Vehicle (SMV) emblem and all lights and reflectors required by local highway and transportation authorities are properly in place, clean, and clearly visible to traffic.



Do not allow riders on any machinery during transport.

Make sure the grinder mixer is securely attached to the tractor and install a safety chain to the grinder mixer.

Make sure the tractor brake pedals are latched together.

Do not exceed 20 mph (32 km/h) when transporting the grinder mixer. Always reduce speed on rough roads and surfaces, or when going down inclines.

Use caution when turning and always use the turn signals on the tractor to indicate your turning intentions to the other traffic.

The weight of the trailed machine should NEVER exceed the weight of the towing vehicle.

Check all clearances carefully whenever the machine is towed.

Lower the elevator into the transport position before transporting the grinder mixer on the highway.



Stay away from overhead obstructions and power lines during transport. Electrocuting can occur even without direct contact.

STORAGE SAFETY

SAFETY INSTRUCTIONS

Follow all operating and safety instructions found in this manual when storing this equipment.



Store the grinder mixer in an area away from human activity.



Do not permit children to play on or around the stored machine at any time.

Make sure that the grinder mixer is stored in an area with a firm and level base to prevent the machine from tipping or sinking into the ground.



Block the wheels to prevent the machine from rolling.

TIRE SAFETY**SAFETY
INSTRUCTIONS**

Follow all operating and safety instructions found in this manual when working around tires.

Have only a qualified tire dealer or tire repair service perform tire repairs.

Do not attempt to install a tire on a wheel or rim unless you have the proper equipment and experience to do the job.

Do not substitute tires with a lesser road rating and/or capacity for the original equipment tires.

⚠ WARNING

Explosive Force Hazard
Tire replacement, repair, and/or maintenance should be done by a qualified tire dealer or qualified repair service.

Failure to follow proper procedures when installing a tire on a wheel or rim can produce an explosive force that will result in serious injury or death.

Do not attempt to install a tire without proper equipment and experience to perform the job.

ASSEMBLY SAFETY**SAFETY
INSTRUCTIONS**

Follow all assembly, operating, and safety instructions found in this manual when assembly this equipment.



Use adequate manpower to perform assembly procedures safely.

Assemble the grinder mixer in an area with sufficient space to maneuver the largest components and allow easy access to all sides of the machine.



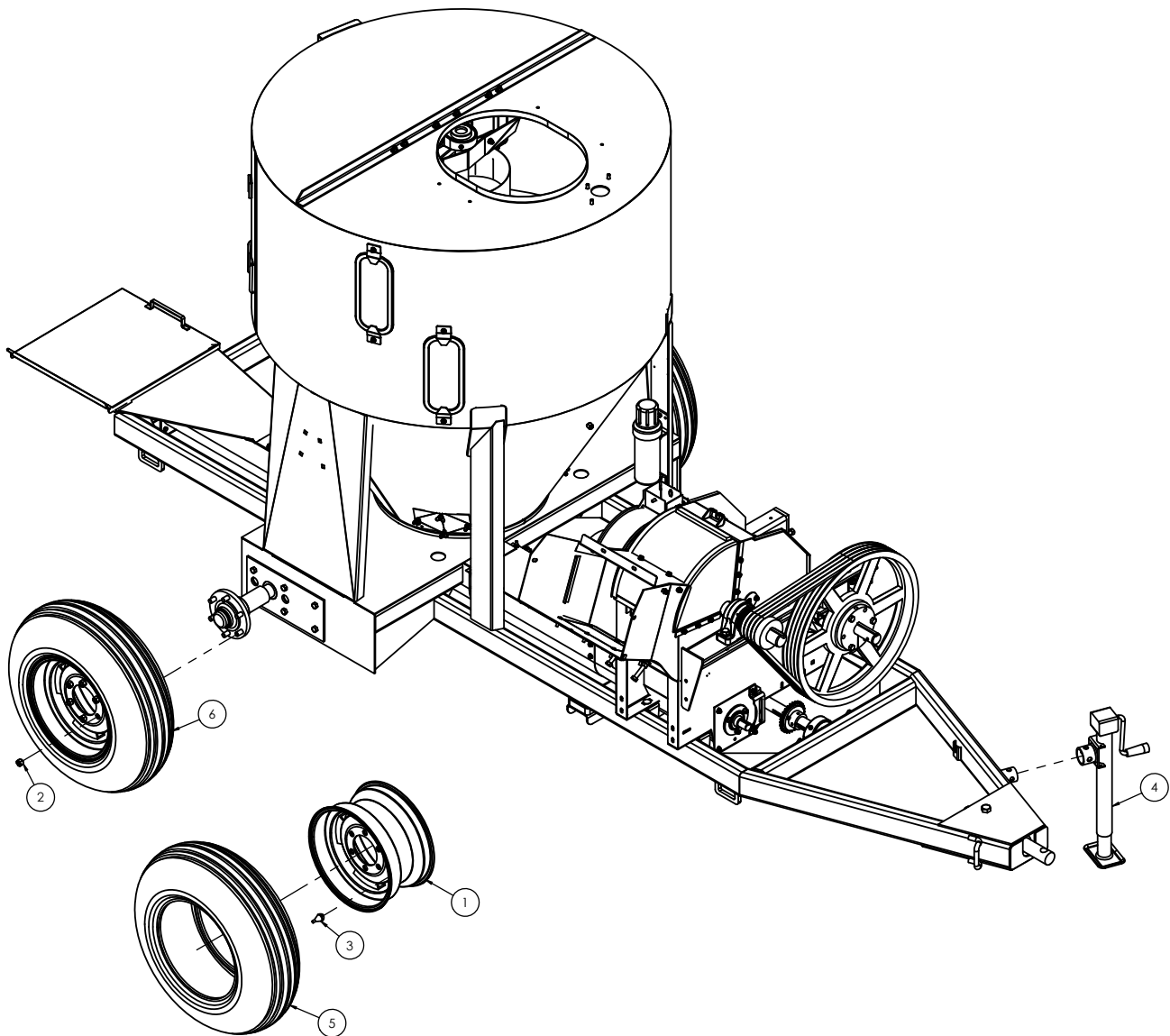
Use only forklifts, lift cranes, jacks, and tools with sufficient capacity for the loads.



Do not allow spectators, especially children, in the working area.

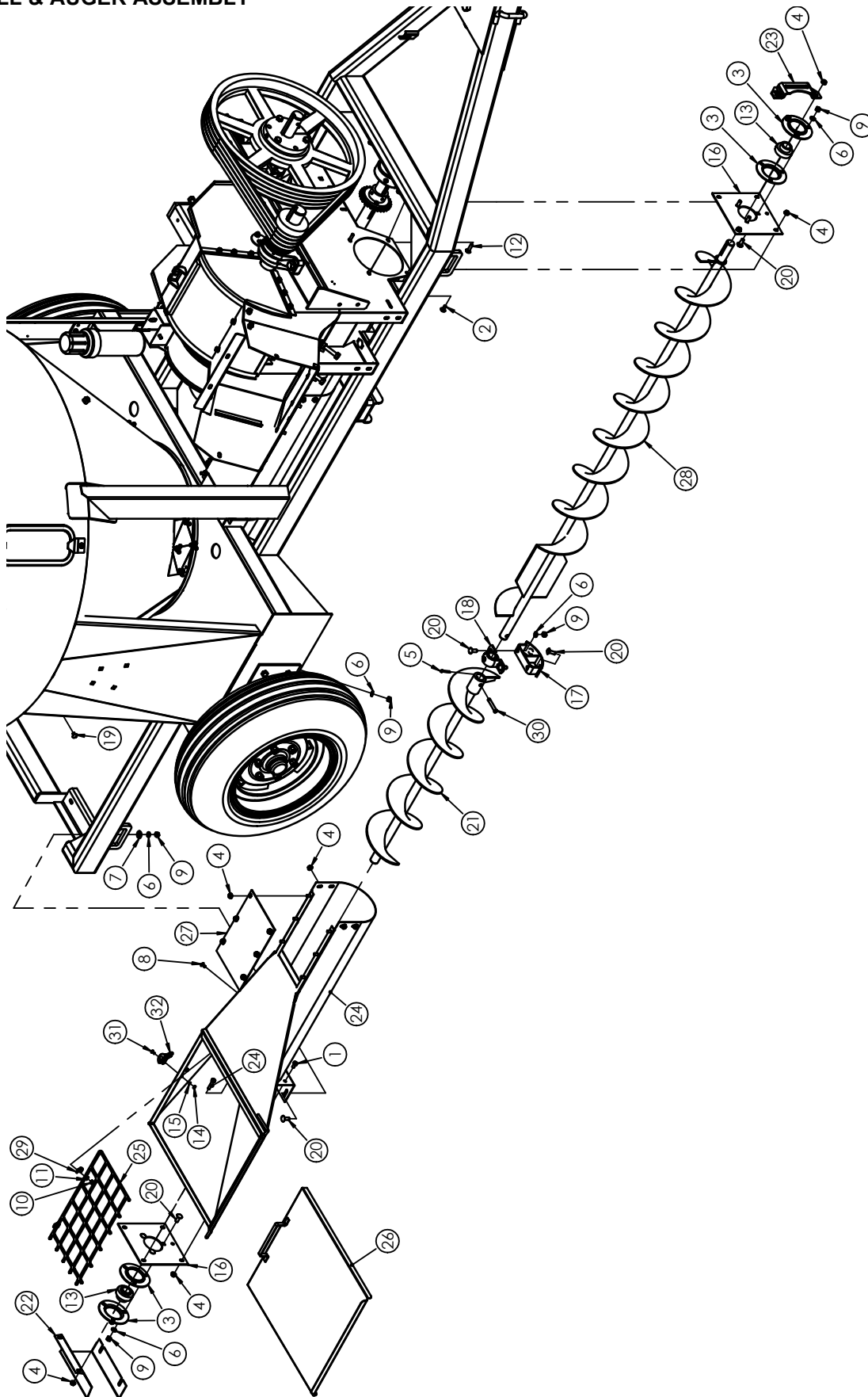
**THIS PAGE
LEFT
INTENTIONALLY
BLANK**

SECTION 1: ILLUSTRATED PARTS LIST

HITCH ASSEMBLY

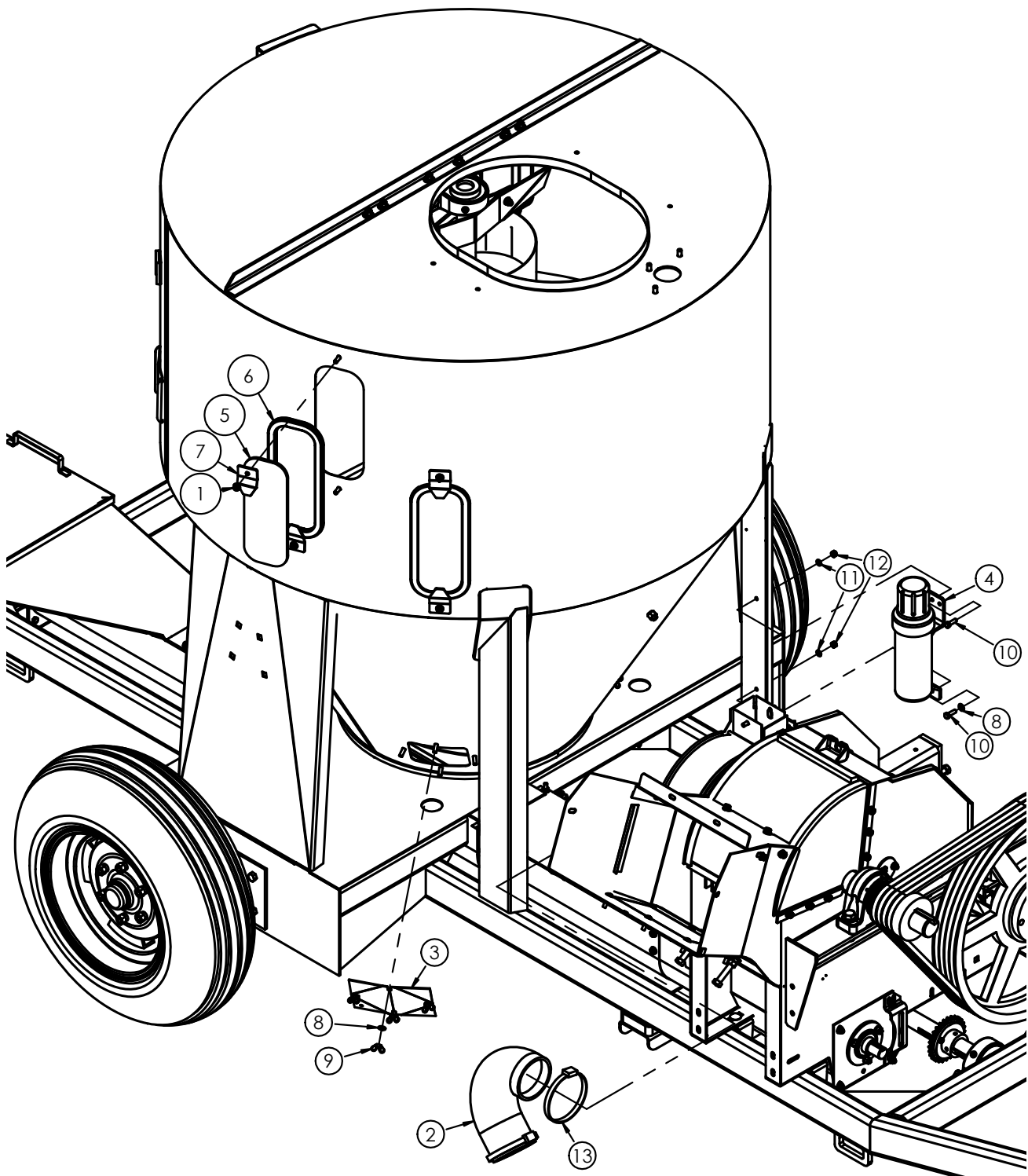
ITEM NO.	PART NUMBER	DESCRIPTION	QTY.
1	018716	WHEEL, 15"X8"	2
2	020730	NUT, LUG	12
3	164420	STEM, VALVE	2
4	626050	JACK ASSY, SIDEWINDER	1
5	I1980928C1	TIRE, 9.5L-15 8 PLY	2
6	V63037	WHEEL/TIRE ASSY	2

MIX MILL & AUGER ASSEMBLY



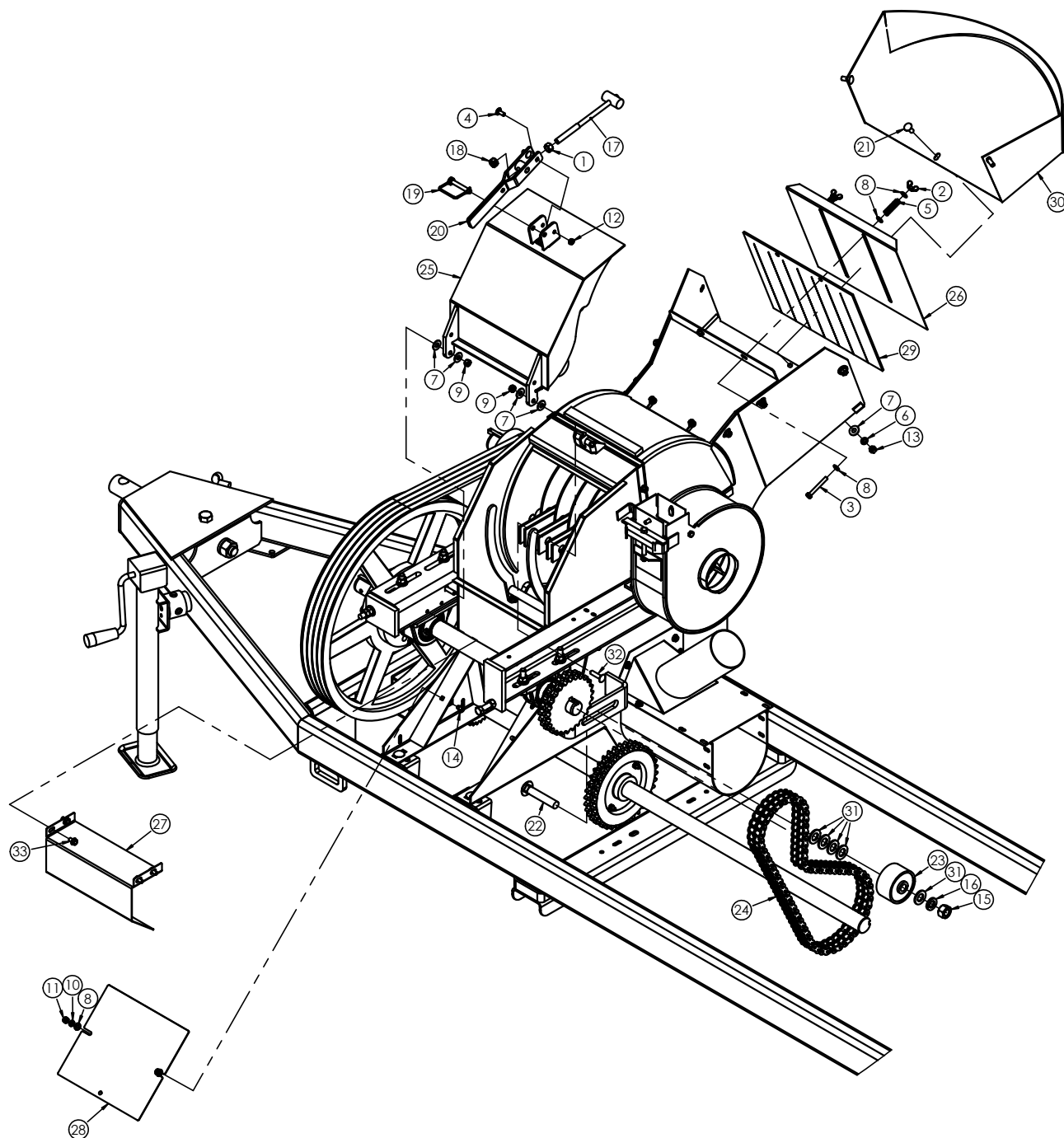
ITEM NO.	PART NUMBER	DESCRIPTION	QTY.
1	006880	BOLT, HHCS 5/16-18X5/8	2
2	012410	BOLT, CRG 5/16-18X3/4	2
3	019150	FLG, 1-1/8 BRG	4
4	020190	NUT, LOCK 5/16-18 FLG	26
5	020700	COTTER PIN, 3/16 X 2 1/2	1
6	021180	WASHER, LOCK 3/8	12
7	021190	WASHER, FLAT 3/8 STD	2
8	021240	SCREW, THMS 1/4-20	2
9	027260	NUT, HEX 3/8-16 GR5	12
10	027660	NUT, HEX 1/4-20 GR5 ZN	2
11	029440	WASHER, LOCK 1/4 SAE	2
12	049290	BOLT, CRG 5/16-18X3/4 SSN ZN	2
13	108850	BEARING ASSY,	2
14	120590	NUT, HEX 10-24 GR2 ZN	2
15	120600	WASHER, LOCK #10 X 21/64 X 3/6	2
16	128040	PLATE, HOLE COVER	2
17	165020	BRACKET WLDT,	1
18	165030	BEARING, 1.12 SPLIT	1
19	169340	BOLT, CRG 5/16-18 X .50 SSN GR 2 ZN	4
20	170530	BOLT, CRG 3/8-16 X 1"	12
21	365150	AUGER WLDT,	1
22	365190	BRACKET, SHORT	1
23	590980	BRACKET, IDLER MTG	1
24	641220	HOPPER WLDT,	1
25	641320	GRATE, SUPPLEMENT	1
26	641350	DOOR WLDT, SUPP.	1
27	641380	PLATE, SUPP. COVER	1
28	641400	AUGER WLDT,	1
29	E180006	CLIP, WIRE	2
30	I21037R1	PIN, CLEVIS 3/8 X 2-1/4 HARDENED GR5	1
31	I159920	SCREW, PHMS 10-24	2
32	I669184R1	CLAMP, SHIELD LATCH	1

WINDOWS & ETC. ASSEMBLY

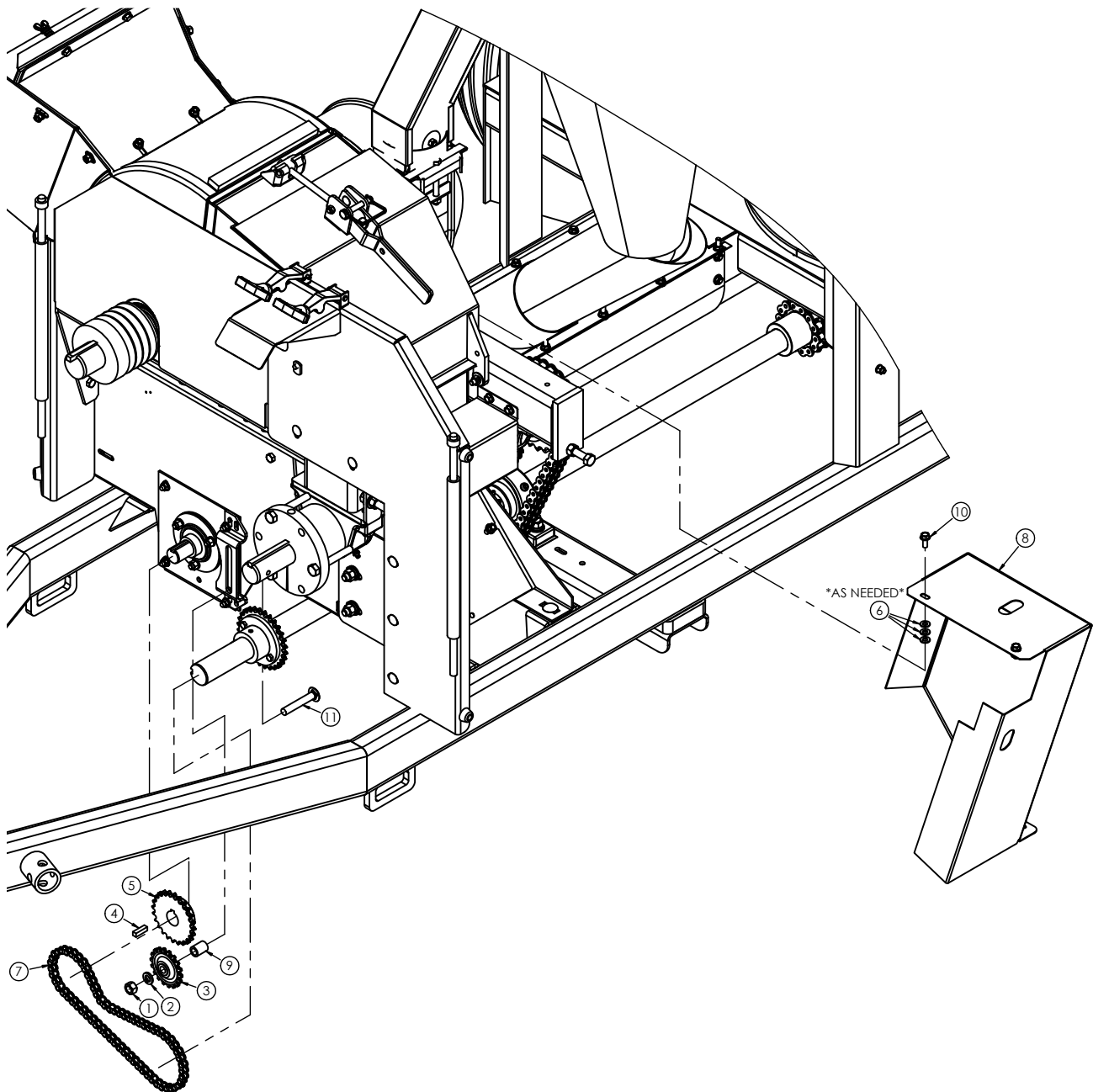


ITEM NO.	PART NUMBER	DESCRIPTION	QTY.
1	006880	BOLT, HHCS 5/16-18X5/8	2
2	012410	BOLT, CRG 5/16-18X3/4	2
3	019150	FLG, 1-1/8 BRG	4
4	020190	NUT, LOCK 5/16-18 FLG	26
5	020700	COTTER PIN, 3/16 X 2 1/2	1
6	021180	WASHER, LOCK 3/8	12
7	021190	WASHER, FLAT 3/8 STD	2
8	021240	SCREW, THMS 1/4-20	2
9	027260	NUT, HEX 3/8-16 GR5	12
10	027660	NUT, HEX 1/4-20 GR5 ZN	2
11	029440	WASHER, LOCK 1/4 SAE	2
12	049290	BOLT, CRG 5/16-18X3/4 SSN ZN	2
13	108850	BEARING ASSY,	2
14	120590	NUT, HEX 10-24 GR2 ZN	2
15	120600	WASHER, LOCK #10 X 21/64 X 3/6	2
16	128040	PLATE, HOLE COVER	2
17	165020	BRACKET WLDT,	1
18	165030	BEARING, 1.12 SPLIT	1
19	169340	BOLT, CRG 5/16-18 X .50 SSN GR 2 ZN	4
20	170530	BOLT, CRG 3/8-16 X 1"	12
21	365150	AUGER WLDT,	1
22	365190	BRACKET, SHORT	1
23	590980	BRACKET, IDLER MTG	1
24	641220	HOPPER WLDT,	1
25	641320	GRATE, SUPPLEMENT	1
26	641350	DOOR WLDT, SUPP.	1
27	641380	PLATE, SUPP. COVER	1
28	641400	AUGER WLDT,	1
29	E180006	CLIP, WIRE	2
30	I21037R1	PIN, CLEVIS 3/8 X 2-1/4 HARDENED GR5	1
31	I159920	SCREW, PHMS 10-24	2
32	I669184R1	CLAMP, SHIELD LATCH	1

HAMMERMILL OUTER ASSEMBLY

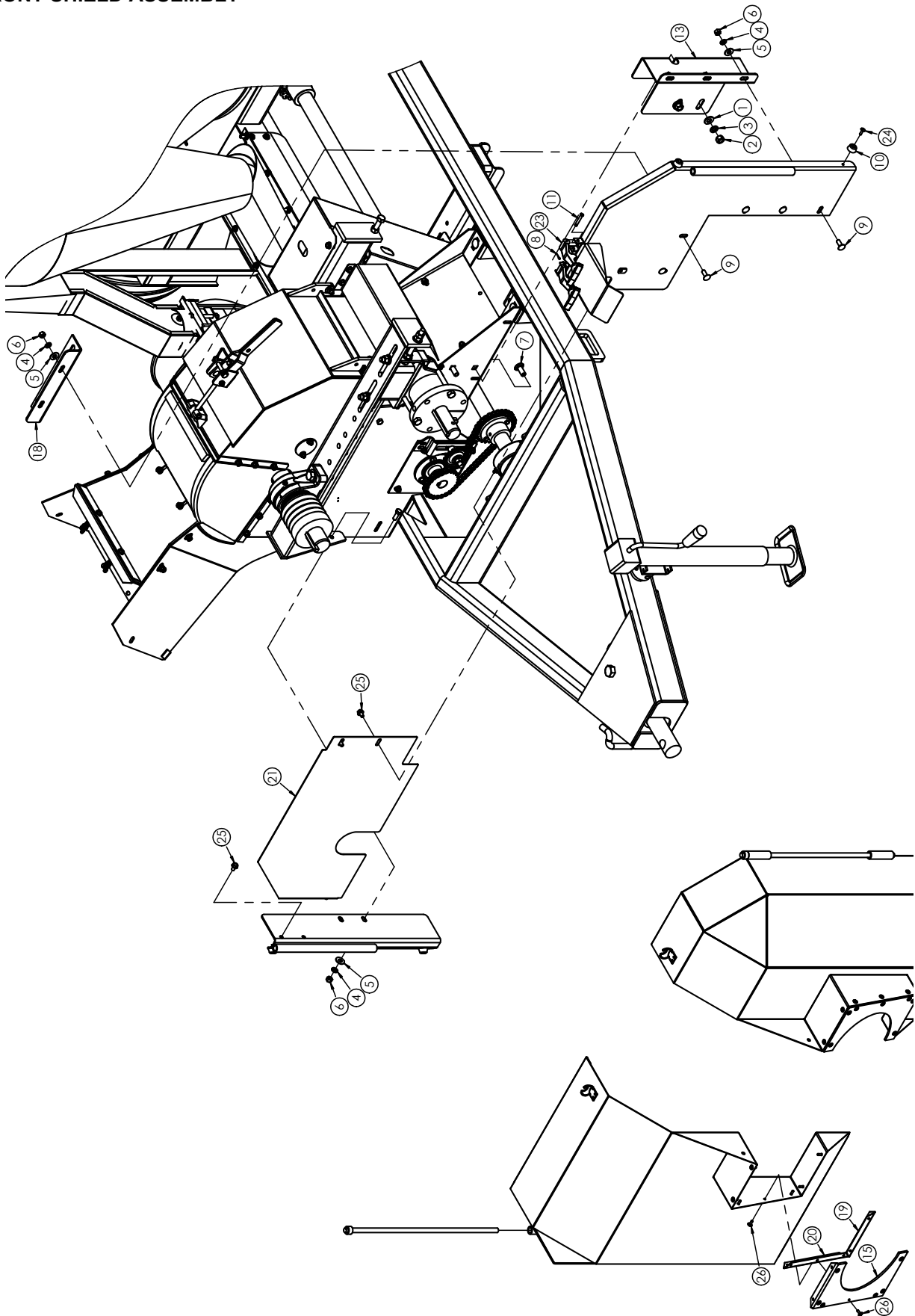


ITEM NO.	PART NUMBER	DESCRIPTION	QTY.
1	005360	NUT, HEX 1/2-13	1
2	009790	NUT, WING 5/16-18	2
3	009800	BOLT, HHCS 5/16-18 X 2 1/2	2
4	012410	BOLT, CRG 5/16-18X3/4	2
5	013080	SPRING, COMP.	2
6	021180	WASHER, LOCK 3/8	3
7	021190	WASHER, FLAT 3/8 STD	7
8	022920	WASHER, FLAT 5/16 STD	8
9	023060	NUT, LOCK 3/8-16 2 WAY	2
10	023620	WASHER, LOCK 5/16	2
11	023630	NUT, HEX 5/16-18	2
12	025670	NUT, LOCK 5/16-18	2
13	027260	NUT, HEX 3/8-16 GR5	3
14	035290	BOLT, CRG 5/16-18X5/84 SSN	2
15	036750	NUT, HEX 3/4-10	1
16	036800	WASHER, LOCK 3/4 SAE	1
17	127860	T-BAR HANDLE WLDT	1
18	127890	NUT, LOCK 1/2-13	1
19	143710	PIN, SNAPPER	1
20	151920	HANDLE, LOCKING WLDT	1
21	170530	BOLT, CRG 3/8-16 X 1"	3
22	218120	BOLT, CRG 3/4-10 X 4	1
23	529230	IDLER, RUBBER	1
24	529240	CHAIN, ROLLER RC60-2	1
25	641280	DOOR WLDT, HM	1
26	641460	GATE, GRAIN	1
27	641470	SHIELD, JACKSHAFT	1
28	641510	SHIELD, LOWER HM	1
29	642050	FLAP, THROAT	1
30	642510	BASKET WLDT, 12" HM	1
31	I131017	WASHER, FLAT	5
32	J03H1558	BOLT, CRG 3/8-16 X 1-1/2	1
33	JN71292	SCREW, FLG 5/16-18 X 1/2	4

MILL MIX DRIVE ASSEMBLY

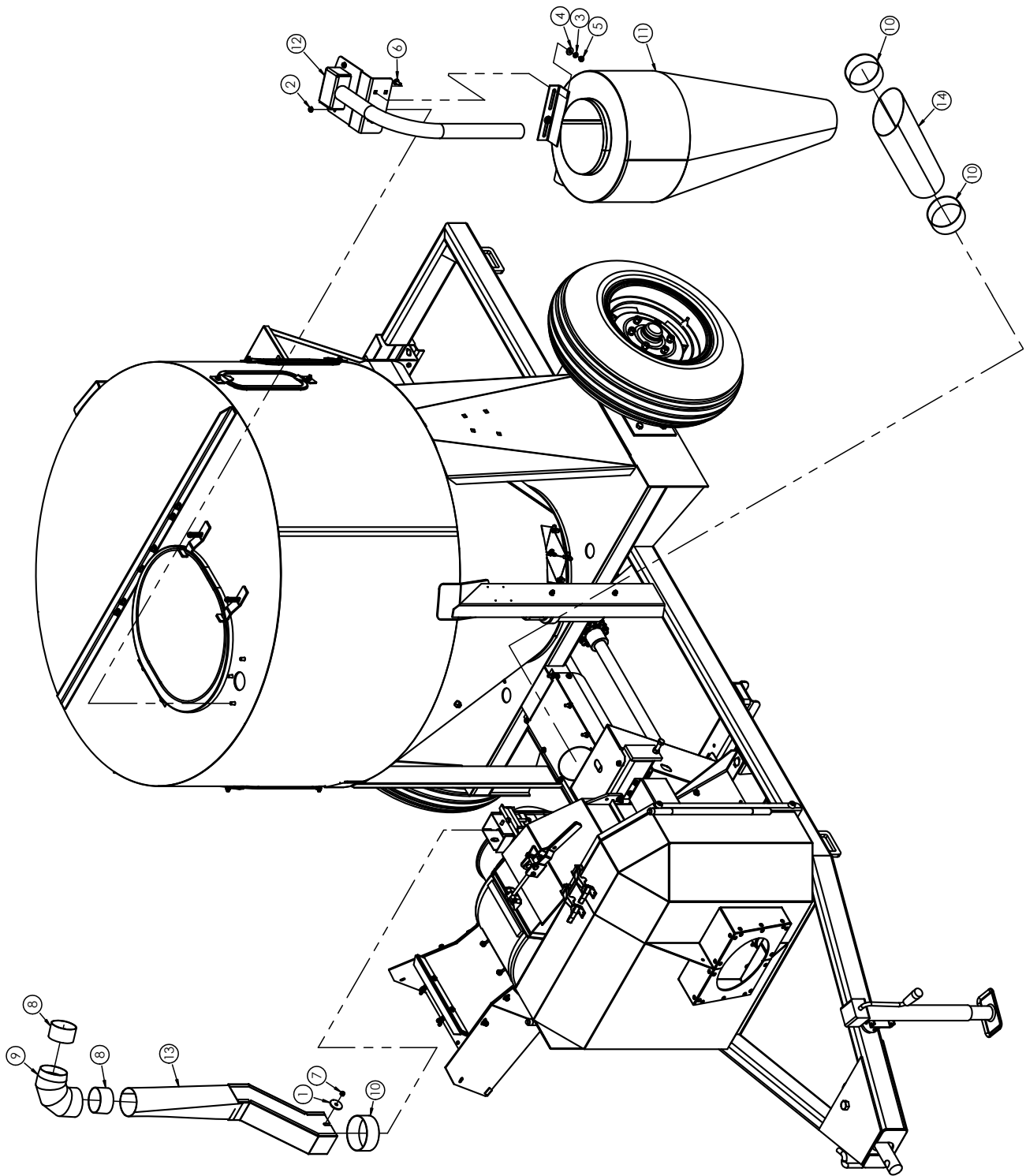
ITEM NO.	PART NUMBER	DESCRIPTION	QTY.
1	005360	NUT, HEX 1/2-13	3
2	005370	WASHER, LOCK 1/2	3
3	020260	SPROCKET, 40A18 IDLER	1
4	020760	KEY, SQUARE 5/16 X 1-1/8	1
5	021860	SPROCKET, 40B24	1
6	022920	WASHER, FLAT 5/16 STD	8
7	384570	CHAIN, ROLLER RC40	1
8	528960	SHIELD WLDT,	1
9	604150	TUBING, SPACER	1
10	JN10212	SCREW, FLG 5/16-18 X 3/4	4
11	MP903921	BOLT, CRG 1/2-13 X 3	1

FRONT SHIELD ASSEMBLY



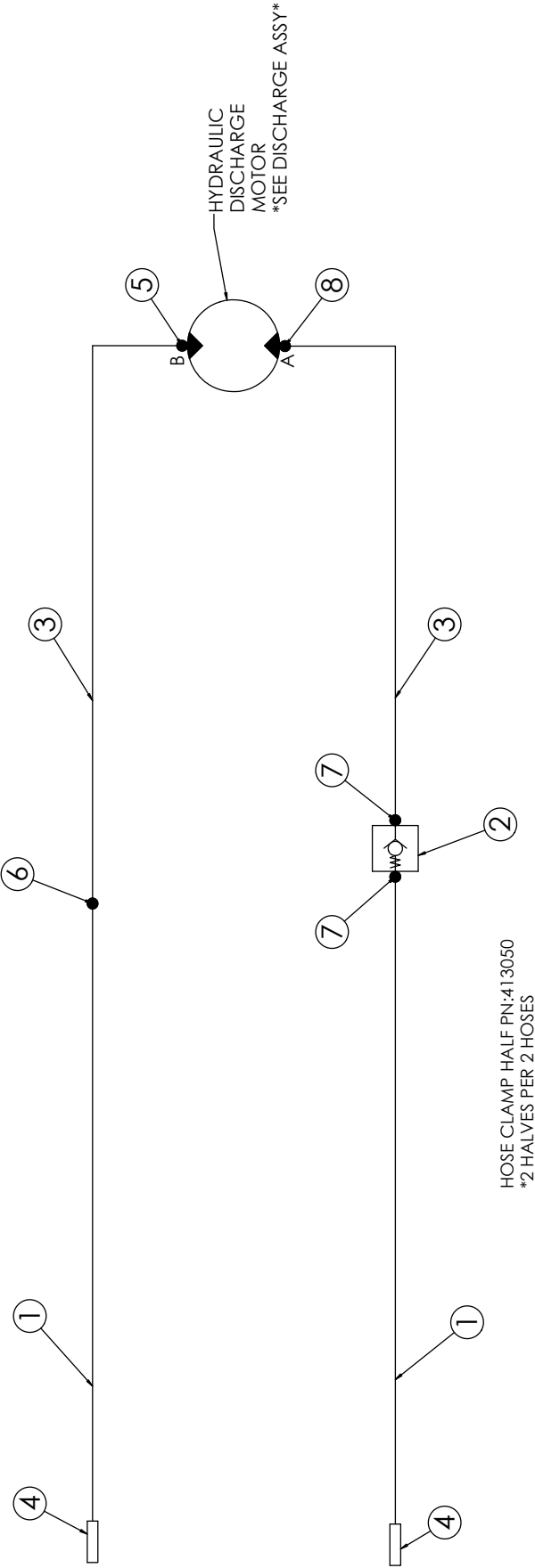
ITEM NO.	PART NUMBER	DESCRIPTION	QTY.
1	005200	WASHER, FLAT 1/2 STD	2
2	005360	NUT, HEX 1/2-13	3
3	005370	WASHER, LOCK 1/2	3
4	021180	WASHER, LOCK 3/8	9
5	021190	WASHER, FLAT 3/8 STD	9
6	027260	NUT, HEX 3/8-16 GR5	7
7	030470	BOLT, CRG 1/2-13 X 1-1/4"	2
8	116820	PIN, COTTER 1/16 X 3/4	2
9	170530	BOLT, CRG 3/8-16 X 1"	7
10	212510	BUMPER, RUBBER	4
11	215800	PIN, CLEVIS 1/4 X 1 5/8	2
12	581830	SHIELD WLDT, RH	1
13	581870	PLATE, MTG MAIN	1
14	581890	SHIELD WLDT, LH	1
15	581930	GUARD, RUBBER PTO	2
16	581940	MOUNT WLDT, LH	1
17	582020	MOUNT WLDT, RH	1
18	583540	ANGLE, SHIELD	1
19	584430	ANGLE, BACKING	4
20	584440	ANGLE, BACKING	2
21	610870	SHIELD, FILLER RH	1
22	626650	PIN WLDT, DOOR	2
23	E504003	LATCH, RUBBER	2
24	G146805	RIVET, 3/16	4
25	JN71292	SCREW, FLG 5/16-18 X 1/2	4
26	MP904602	RIVET, POP .188	28

AIR SYSTEM ASSEMBLY



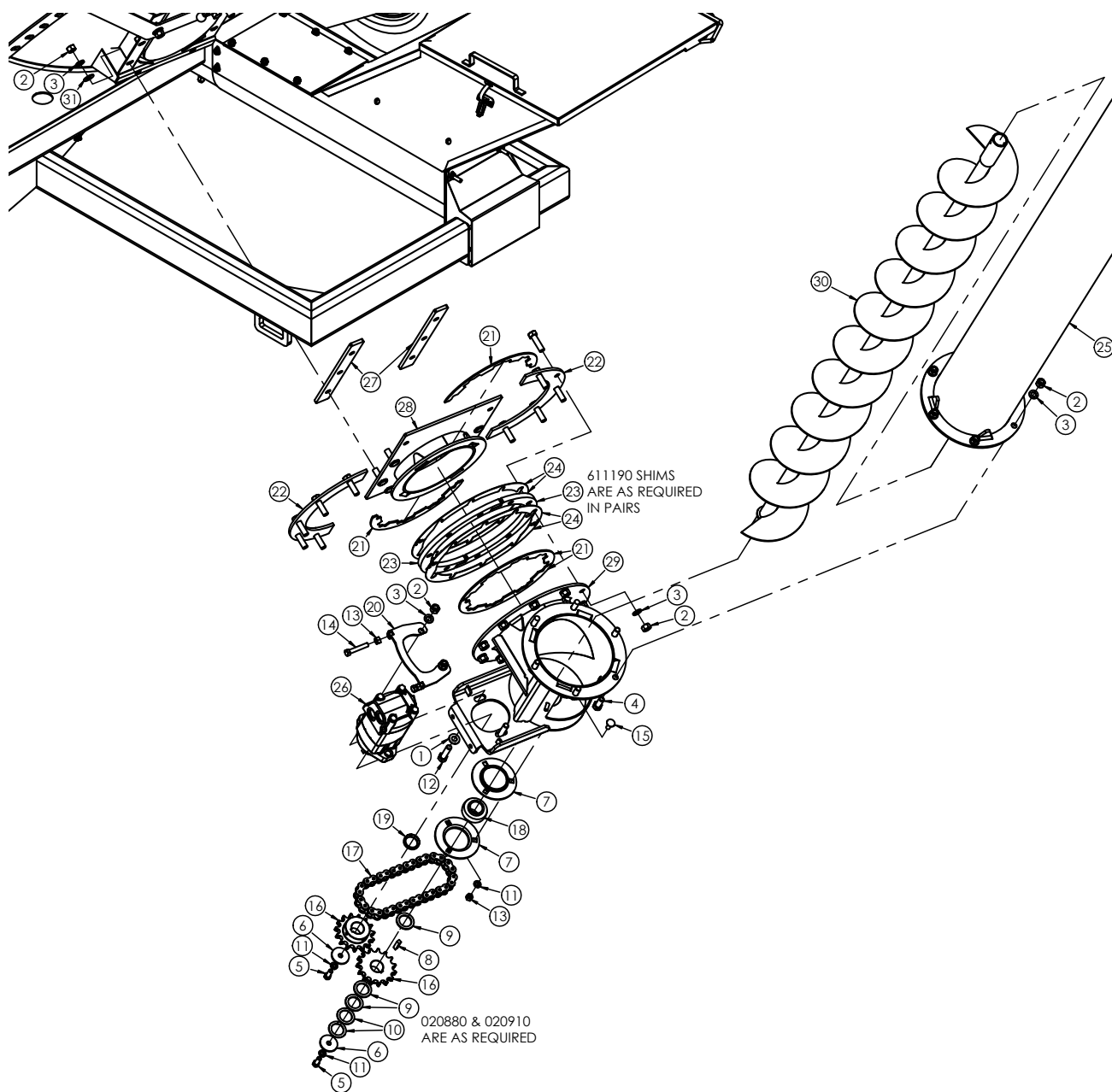
ITEM NO.	PART NUMBER	DESCRIPTION	QTY. JR50	QTY. JR75
1	012270	WASHER, FLAT	2	2
2	020190	NUT, LOCK 5/16-18 FLG	5	5
3	021180	WASHER, LOCK 3/8	9	9
4	021190	WASHER, FLAT 3/8 STD	9	9
5	032370	NUT, HEX 3/8-16	2	2
6	170530	BOLT, CRG 3/8-16 X 1"	7	7
7	181570	NUT, LOCK 5/16-18 NYLON	2	2
8	185880	BAND, RUBBER	2	2
9	188391	ELBOW, 4" -90	1	1
10	254160	BAND, RUBBER	3	3
11	366155	COLLECTOR WLDT,	1	1
12	584110	BRACKET WLDT,	1	1
13	640850	TUBE WLDT, UPRIGHT	1	-
	366095	TUBE WLDT, UPRIGHT	-	1
14	640920	TUBE, DIGONAL RETURN	1	-
	165875	TUBE, DIGONAL RETURN	-	1

HYDRAULIC ASSEMBLY

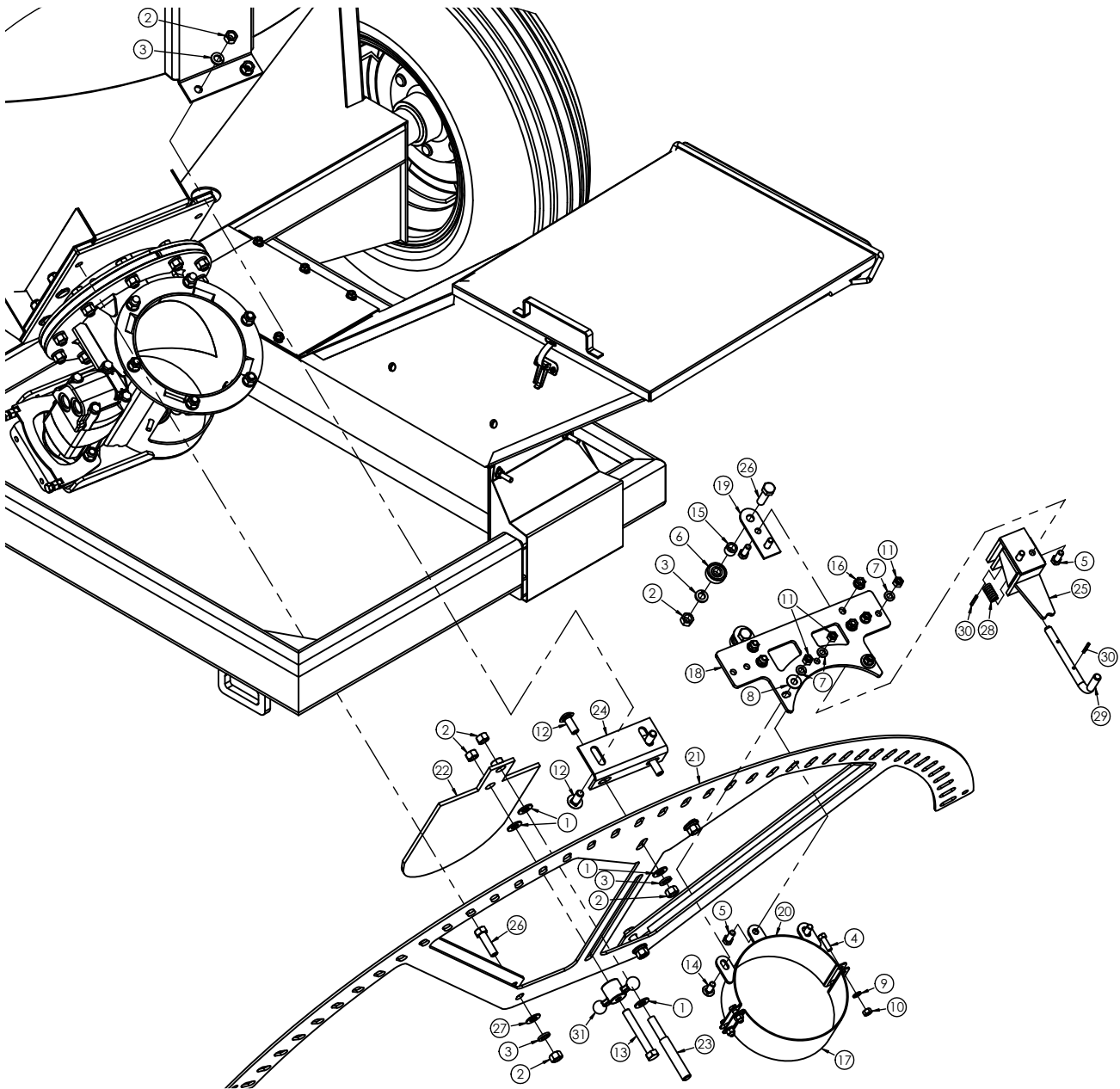


ITEM NO.	PART NUMBER	DESCRIPTION	QTY.
1	530050P	HOSE, HYD 1/2"-130" -8FJIC X -10MORB	2
2	530340	VALVE, CHECK -10 ORB	1
3	551540	HOSE, HYD 1/2"-65" -8FJIC X -8FJIC	2
4	576100	COUPLER, HYD -10FORB	2
5	594840	FITTING, HYD XL 90°-8MFIC X -10MORB	1
6	MP32.01952	FITTING, HYD STR -8MJIC X -8MJIC	1
7	MP32.02101	FITTING, HYD STR -8MJIC X -10MORB	2
8	MP32.03794	FITTING, HYD 90° -8MJIC X -10MORB	1

DISCHARGE ELBOW ASSEMBLY

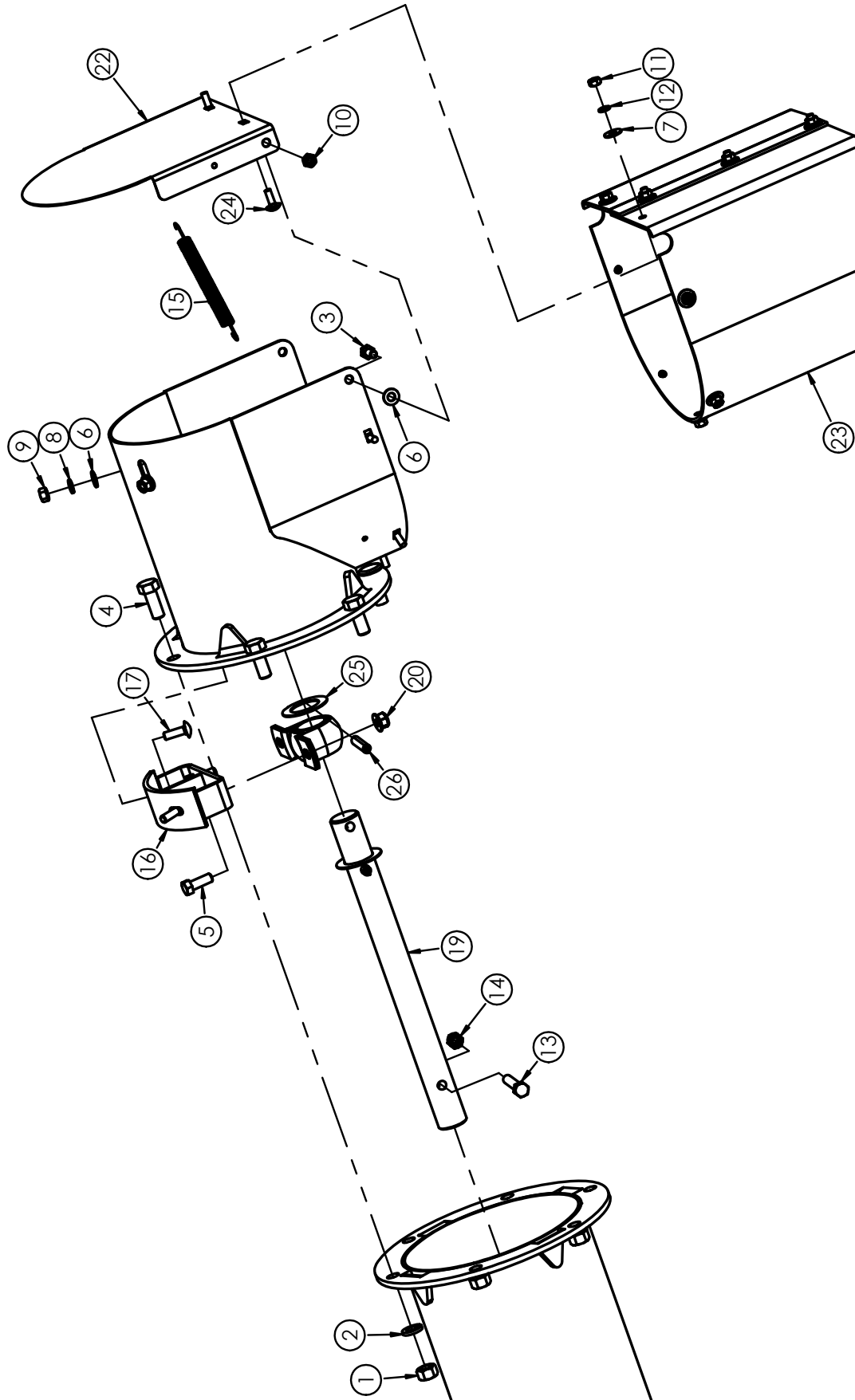


ITEM NO.	PART NUMBER	DESCRIPTION	QTY.
1	005200	WASHER, FLAT 1/2 STD	7
2	005360	NUT, HEX 1/2-13	40
3	005370	WASHER, LOCK 1/2	38
4	010730	BOLT, HHCS 1/2-13 X 1-1/4"	9
5	012260	BOLT, HHCS 3/8-16 X 1	11
6	012270	WASHER, FLAT	2
7	019150	FLG, 1-1/8 BRG	2
8	020220	KEY, SQUARE 5/16 X 1-1/4	1
9	020880	WASHER, FLAT	3
10	020910	WASHER, FLAT 1-1/4X1-3/4X1/16	2
11	021180	WASHER, LOCK 3/8	10
12	023950	BOLT, HHCS 1/2-13 X 2"	2
13	027260	NUT, HEX 3/8-16 GR5	10
14	029930	BOLT, HHCS 3/8-16 X 2-1/2	3
15	170530	BOLT, CRG 3/8-16 X 1"	5
16	260070	SPROCKET, 60B15	2
17	442560	CHAIN, RC60 33P	1
18	461780	BEARING ASSY,	1
19	584690	SEAL, SLINGER 1-1/4	1
20	584860	BRACKET WLDT, MOTOR	1
21	611140	WASHER, HALF UHMW	4
22	611150	RING, CLAMP HALF	2
23	611180	RING, HALF	2
24	611190	RING, HALF	4
25	611860	TUBE WLDT,	1
26	617810	MOTOR, HYD 8.0CID	1
27	640980	PLATE, SPACER	2
28	641000	ADAPTER WLDT,	1
29	641030	ELBOW WLDT, PIVOT	1
30	641330	AUGER WELDMENT,	1
31	I120396	WASHER, FLAT 1/2"	8

DISCHARGE SWING ASSEMBLY

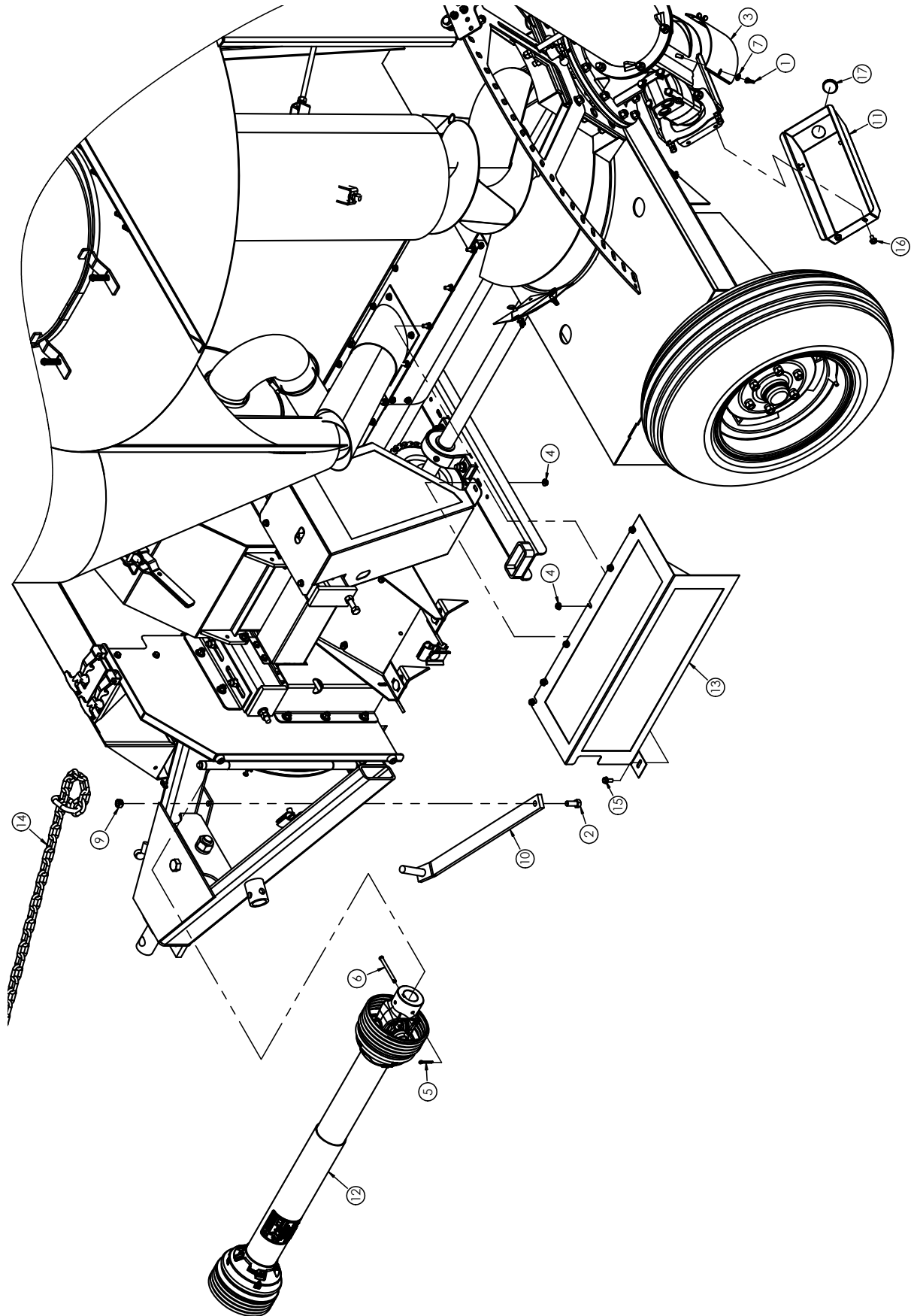
ITEM NO.	PART NUMBER	DESCRIPTION	QTY.
1	005200	WASHER, FLAT 1/2 STD	7
2	005360	NUT, HEX 1/2-13	40
3	005370	WASHER, LOCK 1/2	38
4	005900	BOLT, HHCS 5/16-18 X 1"	4
5	012260	BOLT, HHCS 3/8-16 X 1	11
6	013750	BEARING, BALL	2
7	021180	WASHER, LOCK 3/8	10
8	021190	WASHER, FLAT 3/8 STD	2
9	023620	WASHER, LOCK 5/16	6
10	023630	NUT, HEX 5/16-18	6
11	027260	NUT, HEX 3/8-16 GR5	10
12	030470	BOLT, CRG 1/2-13 X 1-1/4"	4
13	034650	BOLT, HHCS 1/2-13X3-1/2	1
14	170530	BOLT, CRG 3/8-16 X 1"	5
15	512670	TUBE, ROD STOP	2
16	600120	NUT, HFH NYLOC 3/8-16	6
17	613871	BAND, 8" CLAMP	1
18	640990	PLATE, BOLT ON LOCK	1
19	641080	PLATE, BEARING GUIDE	2
20	641090	CLAMP WLDT, TUBE	1
21	641120	LOCATOR WLDT, ANGLE	1
22	641150	DOOR WLDT, MANUAL	1
23	641170	HANDLE, DOOR LIFT	1
24	641180	PLATE, ATTACHMENT	1
25	641190	LATCH WLDT, LOCK	1
26	1770500	BOLT, HHCS 1/2-13 X 1-3/4"	14
27	I120396	WASHER, FLAT 1/2"	8
28	MP07.17764	SPRING	1
29	MP17-00750	PIN, CAM LEVER	1
30	MP904246	PIN, SPRING, 5/32, 1-1/4	2
31	P79628	NUT, WING 1/2-13 DOOR	1

DISCHARGE HOOD ASSEMBLY



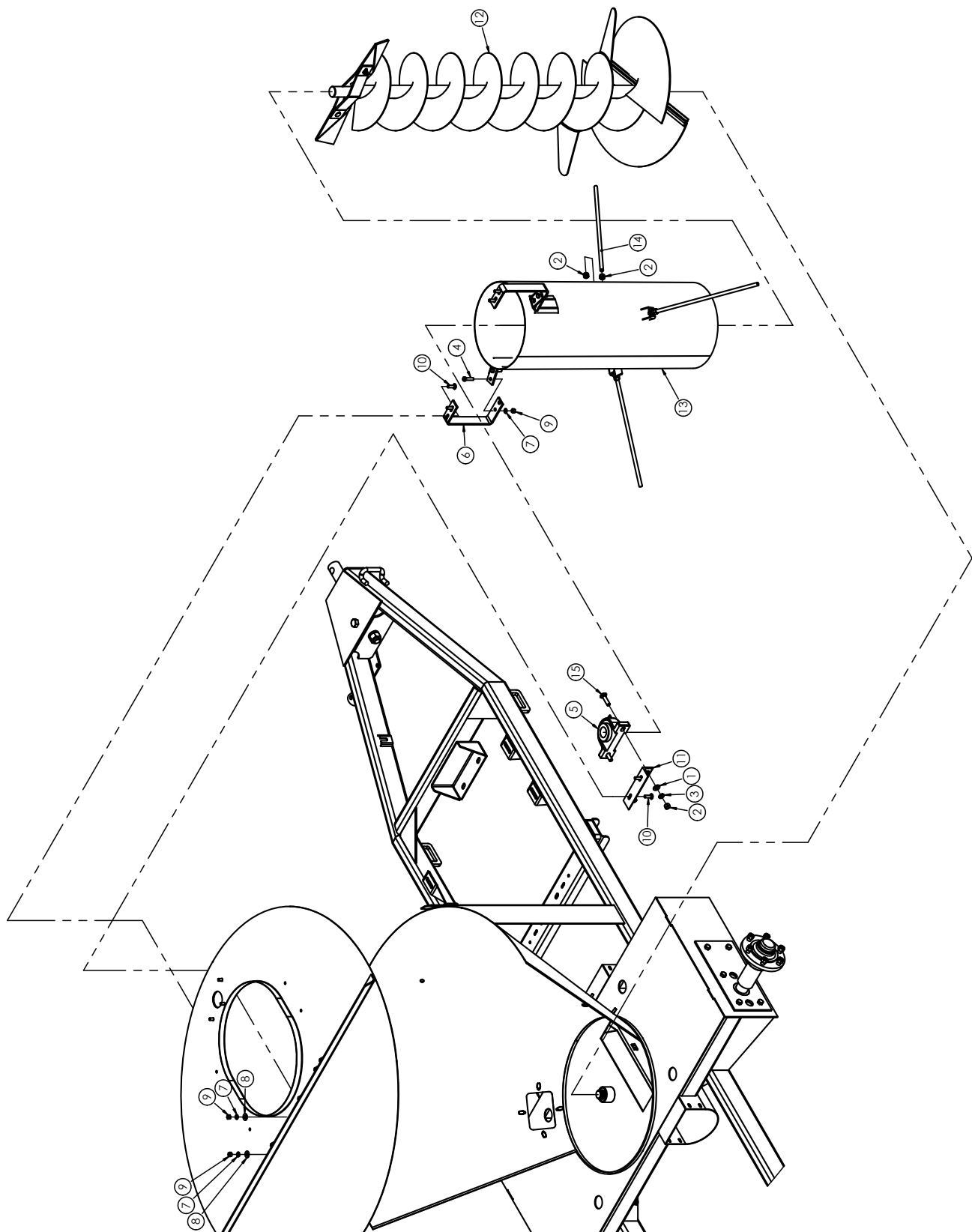
ITEM NO.	PART NUMBER	DESCRIPTION	QTY.
1	005360	NUT, HEX 1/2-13	40
2	005370	WASHER, LOCK 1/2	38
3	006880	BOLT, HHCS 5/16-18X5/8	2
4	010730	BOLT, HHCS 1/2-13 X 1-1/4"	9
5	012260	BOLT, HHCS 3/8-16 X 1	11
6	022920	WASHER, FLAT 5/16 STD	4
7	023260	WASHER, FLAT 1/4 STD	10
8	023620	WASHER, LOCK 5/16	6
9	023630	NUT, HEX 5/16-18	6
10	025670	NUT, LOCK 5/16-18	2
11	027660	NUT, HEX 1/4-20 GR5 ZN	10
12	029440	WASHER, LOCK 1/4 SAE	10
13	029930	BOLT, HHCS 3/8-16 X 2-1/2	3
14	073630	NUT, LOCK 3/8-16	1
15	100750	SPRING, EXTENSION .438 X 5.75 LG	1
16	165020	BRACKET WLDT,	1
17	254060	BOLT, CRG 5/16-18 X 1"	2
18	583020	BEARING, 1.25 SPLIT	1
19	583690	SHAFT, COUPLER	1
20	600120	NUT, HFH NYLOC 3/8-16	6
21	611400	HOOD WLDT, 8"	1
22	611410	DOOR, HOOD 8"	1
23	614210	SPOUT, RUBBER HOOD	1
24	E096029	BOLT, CRG 1/4-20 X 3/4	10
25	I608700R1	WASHER, FLAT 1.28 X 2.00 X .054	2
26	I43812432	PIN, .375 X 2 SLT SPRING	2

SHIELDS & ADDITIONAL PARTS ASSEMBLY



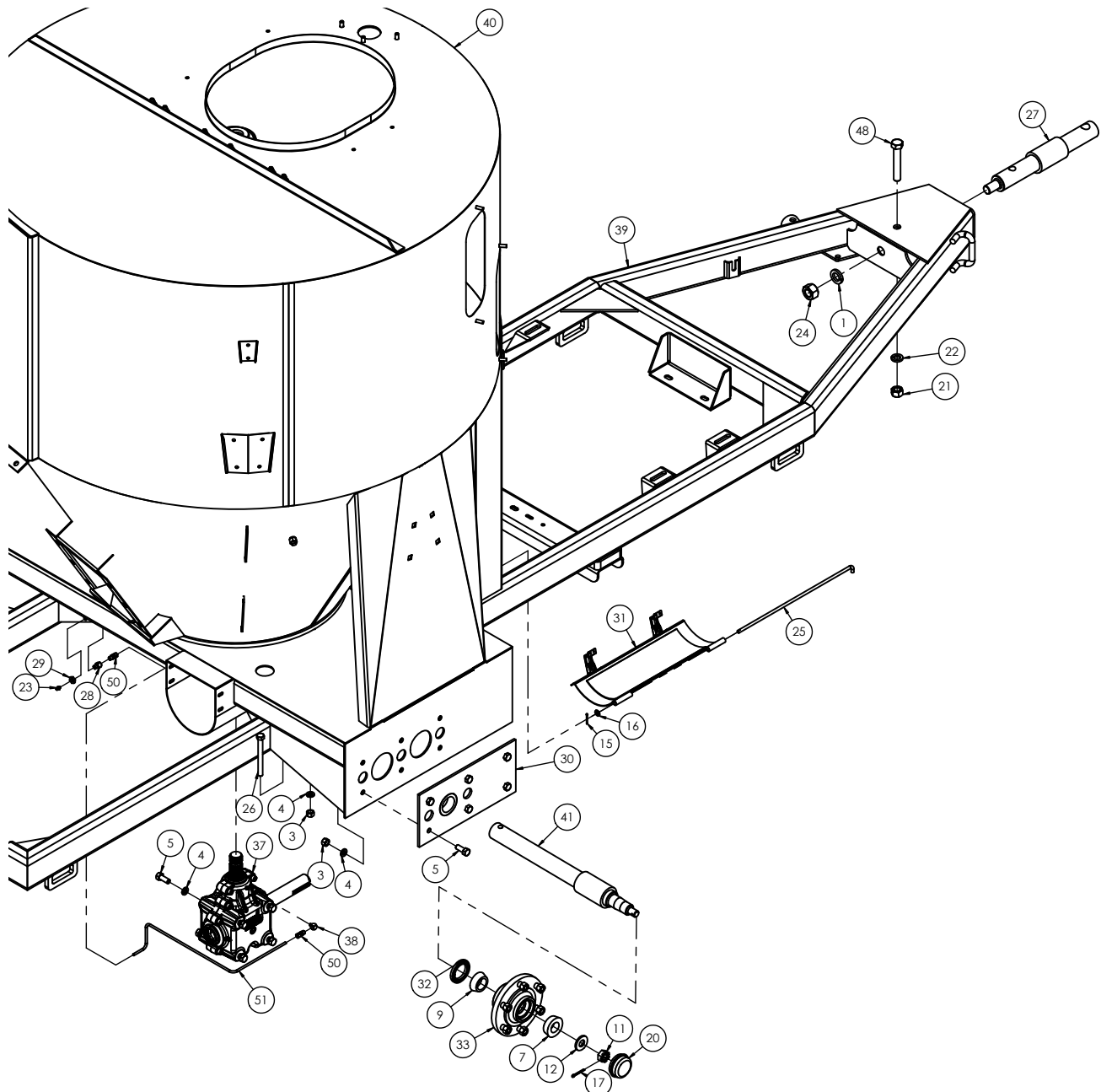
ITEM NO.	PART NUMBER	DESCRIPTION	QTY.
1	009790	NUT, WING 5/16-18	2
2	010730	BOLT, HHCS 1/2-13 X 1-1/4"	1
3	012521	DOOR, CLEANOUT	1
4	020190	NUT, LOCK 5/16-18 FLG	7
5	020700	COTTER PIN, 3/16 X 2 1/2	1
6	021360	PIN, CLEVIS 5/16 X 3 ZN	1
7	022920	WASHER, FLAT 5/16 STD	2
8	036740	CLEVIS, 1-7/8	1
9	127890	NUT, LOCK 1/2-13	1
10	379470	HOLDER, PTO	1
11	583130	SHIELD	1
12	613000	PTO ASSY, 540 RPM	1
13	641480	SHIELD WLDT, MAIN	1
14	1765302	CHAIN, SAFETY	1
15	JN10212	SCREW, FLG 5/16-18 X 3/4	1
16	JN71292	SCREW, FLG 5/16-18 X 1/2	4
17	SD205165	PLUG, 1-3/8 X .35	2

MIXING AUGER ASSEMBLY



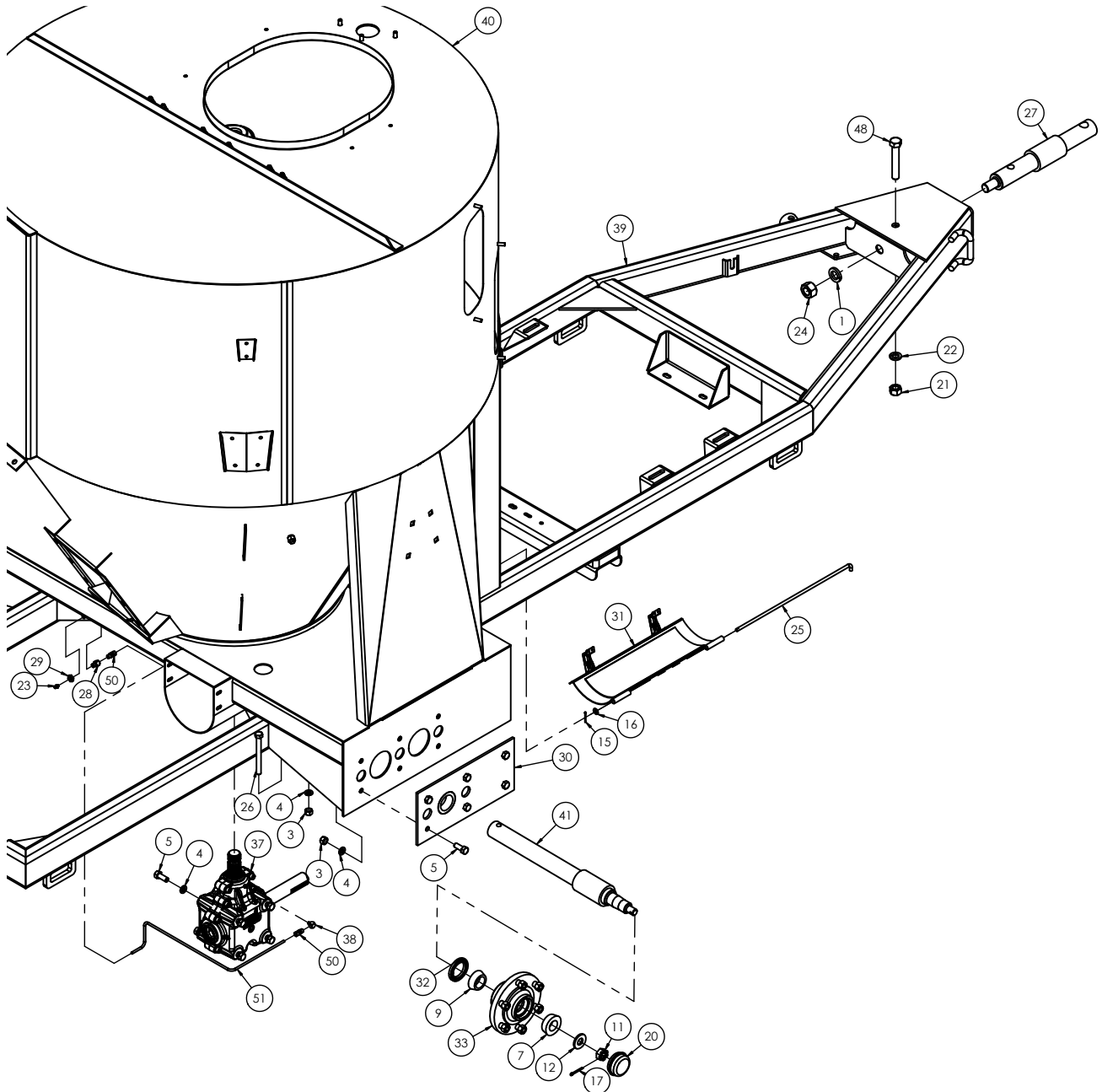
ITEM NO.	PART NUMBER	DESCRIPTION	QTY. JR50	QTY. JR75
1	005200	WASHER, FLAT 1/2 STD	2	2
2	005360	NUT, HEX 1/2-13	25	25
3	005370	WASHER, LOCK 1/2	24	24
4	011370	BOLT, HHCS 3/8-16 X 1-1/2	4	4
5	013960	PB BEARING, 1-5/8 W/LC	1	1
6	018680	SUPPORT, MAIN	2	2
7	021180	WASHER, LOCK 3/8	10	10
8	021190	WASHER, FLAT 3/8 STD	6	6
9	027260	NUT, HEX 3/8-16 GR5	10	10
10	035180	BOLT, CRG 3/8-16 X 1-1/4"	6	6
11	516090	HANGER, BEARING	1	1
12	640940	AUGER WLDT, MIXING	1	-
	640945	AUGER WLDT, MIXING	-	1
13	640960	TUBE WLDT, MIXING	1	-
	640965	TUBE WLDT, MIXING	-	1
14	641520	ROD, MIXING	3	3
15	991200	BOLT, CRG 1/2-13 X 2	2	2

WEIGHBARS AND GEARBOX ASSEMBLY



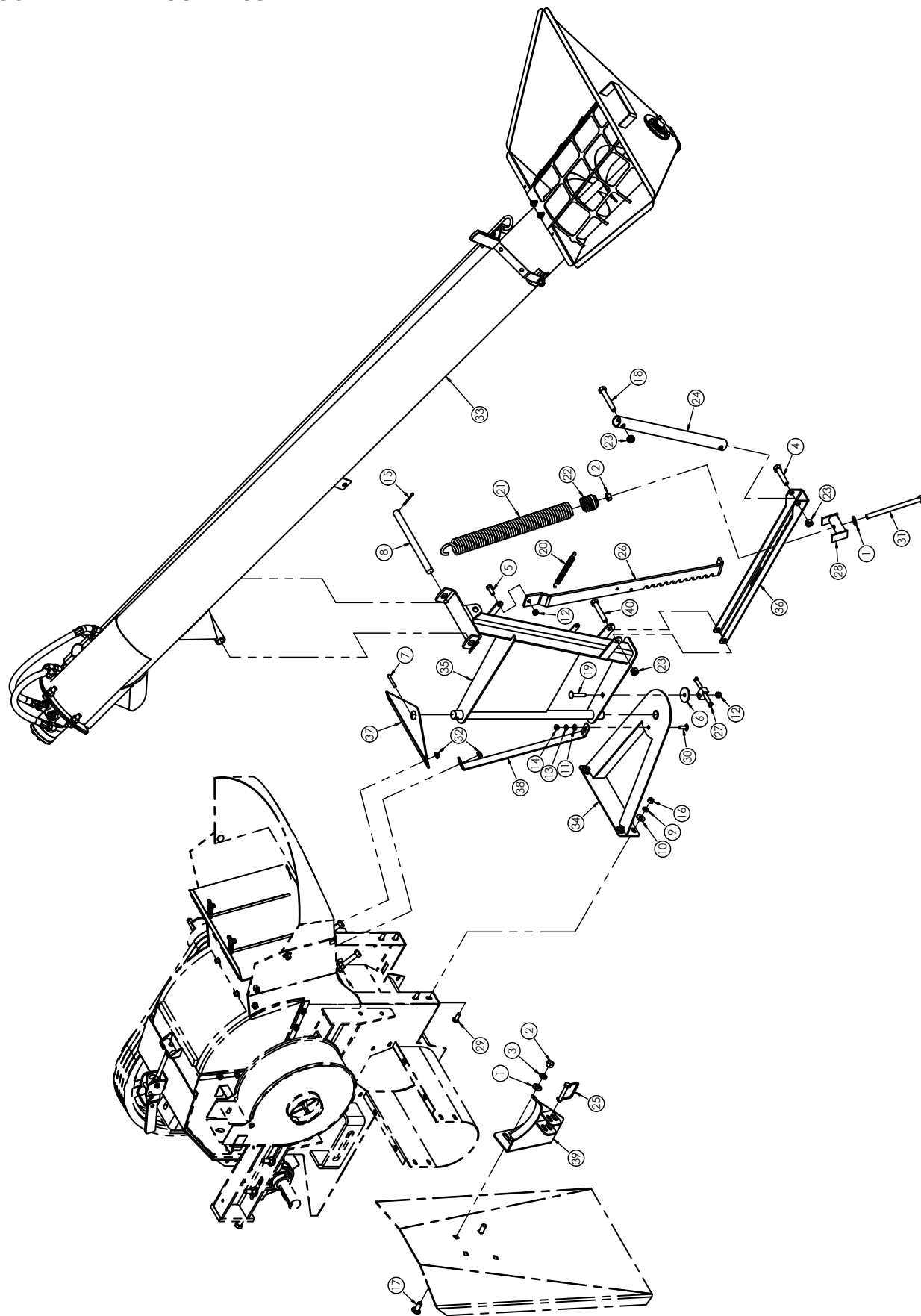
ITEM NO.	PART NUMBER	DESCRIPTION	QTY - 1	QTY - 2	QTY - 3
1	003350	WASHER, LOCK 1"	1	-	-
2	005200	WASHER, FLAT 1/2 STD	-	-	2
3	005360	NUT, HEX 1/2-13	14	-	11
4	005370	WASHER, LOCK 1/2	14	-	10
5	010730	BOLT, HHCS 1/2-13 X 1-1/4"	12	-	8
6	011370	BOLT, HHCS 3/8-16 X 1-1/2	-	-	4
7	012630	BEARING CONE	2	-	-
8	013960	PB BEARING, 1-5/8 W/LC	-	-	1
9	016520	BW PART	2	-	-
10	018680	SUPPORT, MAIN	-	-	2
11	020710	BUT, SLOTTED 3/4-16 GR5 ZN HEX	2	-	-
12	020720	WASHER, FLAT	2	-	-
13	021180	WASHER, LOCK 3/8	-	-	10
14	021190	WASHER, FLAT 3/8 STD	-	-	6
15	021210	PIN, COTTER 3/32 X 1.00	-	-	1
16	022920	WASHER, FLAT 5/16 STD	-	-	1
17	026630	COTTER PIN, 5/32 X 1-1/2	2	-	-
18	027260	NUT, HEX 3/8-16 GR5	-	-	10
19	035180	BOLT, CRG 3/8-16 X 1-1/4"	-	-	6
20	035420	HUBCAP, 2-1/2	2	-	-
21	036750	NUT, HEX 3/4-10	1	-	-
22	036800	WASHER, LOCK 3/4 SAE	1	-	-
23	049180	FITTING, GREASE 1/4-28 STRT	-	-	1
24	147310	NUT, HEX 1-8	1	-	-
25	156970	PIN, 5/16 DIA	-	-	1
26	160350	BOLT, HHCS 1/2-13 X 5 GR5	2	-	-

WEIGHBARS AND GEARBOX ASSEMBLY (CONTINUED)



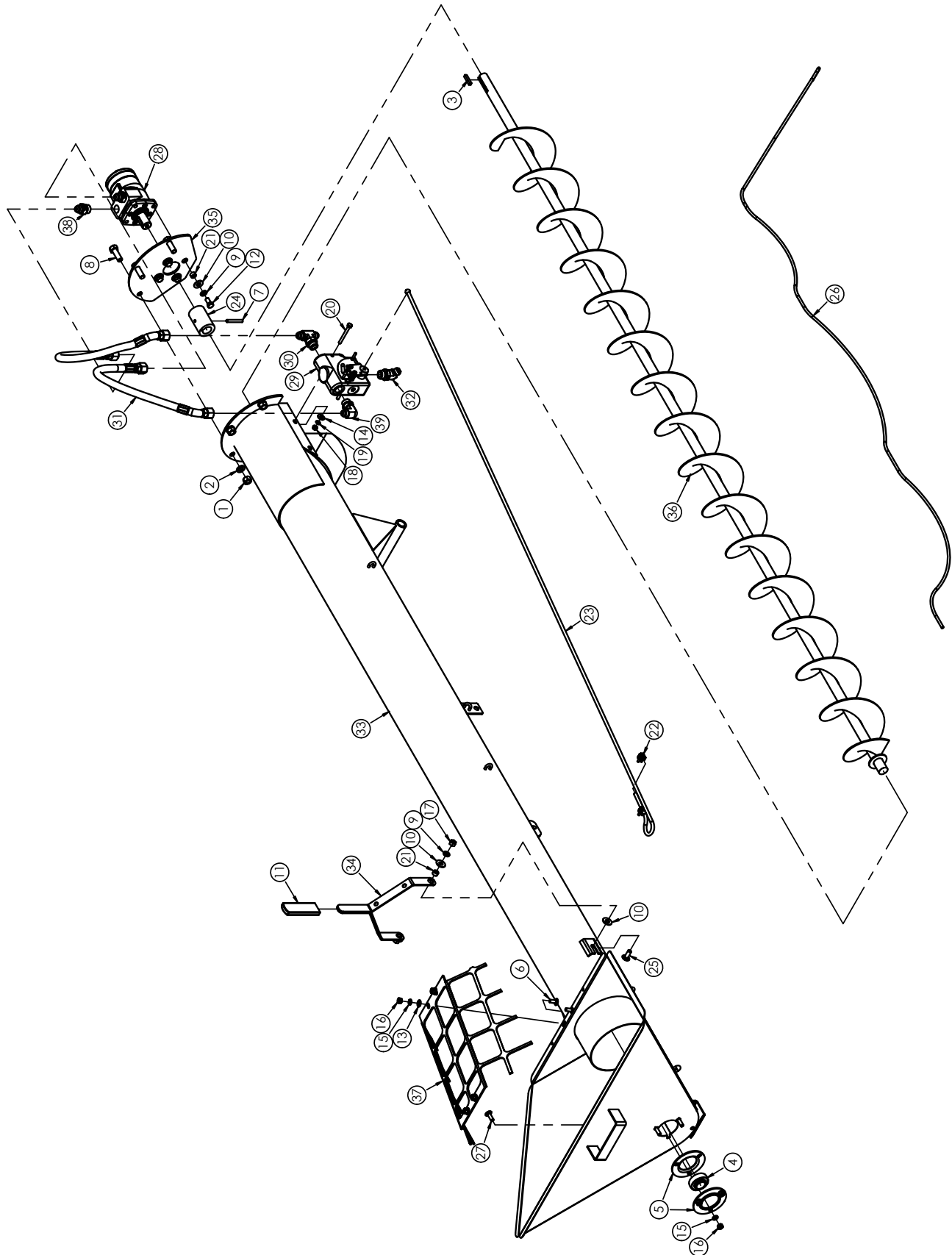
ITEM NO.	PART NUMBER	DESCRIPTION	QTY - 1	QTY - 2	QTY - 3
27	219870	HITCH, 1-7/8 DIA 2-1/8 5-PIN	1	-	-
28	244280	CONNECTOR, BULKHEAD	-	-	1
29	244290	NUT, LOCK 1/8-NPSM	-	-	1
30	363910	BRAKET, MOUNTING	2	-	-
31	363990	COVER WLDT,	-	-	1
32	396050	SEAL, OIL 1.875ID X 2.725OD	2	-	-
33	396100	HUB ASSY, 6-BOLT	2	-	-
34	428660	PLATE, BRACE	-	-	2
35	428670	PLATE, BRACE	-	-	2
36	516090	HANGER, BEARING	-	-	1
37	577790	GEARBOX, SUPERIOR	-	-	1
38	585890	ADAPTER, 90	-	-	1
39	640410	FRAME WLDT, 50 BU	1	-	-
40	640710	TANK WLDT, 50 BU.	-	1	-
41	640930	WEIGHBAR, 1-7/8"	2	-	-
42	640940	AUGER WLDT, MIXING	-	-	1
43	640960	TUBE WLDT, MIXING	-	-	1
44	641420	BRACE, TANK SIDE	-	-	2
45	641430	SUPPORT, LF TANK	-	-	1
46	641440	SUPPORT, RF TANK	-	-	1
47	641520	ROD, MIXING	-	-	3
48	990960	BOLT, HHCS 3/4-10 X 4 1/2 GR5 ZN	1	-	-
49	991200	BOLT, CRG 1/2-13 X 2	-	-	2
50	MP16-21123	CONNECTOR, MALE 3/16	-	-	2
51	MP16-21125	TUBING - COPPER, REFRIG. 3/16 OD	-	-	1

AUGER FEEDER MOUNT ASSEMBLY



ITEM NO.	PART NUMBER	DESCRIPTION	QTY.
1	005200	WASHER, FLAT 1/2 STD	3
2	005360	NUT, HEX 1/2-13	3
3	005370	WASHER, LOCK 1/2	2
4	007080	BOLT, HHCS 1/2-13 X 2-1/2	1
5	012260	BOLT, HHCS 3/8-16 X 1	1
6	012270	WASHER, FLAT	1
7	013600	PIN, ROLL .25 X 2	1
8	015120	PIN, DRAG	1
9	021180	WASHER, LOCK 3/8	4
10	021190	WASHER, FLAT 3/8 STD	4
11	022920	WASHER, FLAT 5/16 STD	1
12	023060	NUT, LOCK 3/8-16 2 WAY	2
13	023620	WASHER, LOCK 5/16	1
14	023630	NUT, HEX 5/16-18	1
15	026630	COTTER PIN, 5/32 X 1-1/2	2
16	027260	NUT, HEX 3/8-16 GR5	4
17	030470	BOLT, CRG 1/2-13 X 1-1/4"	2
18	041410	BOLT, HHCS 1/2-13 X 3.25	1
19	041450	BOLT, CRG 3/8-16 X 2	1
20	100750	SPRING, EXTENSION	1
21	113470	SPRING, EXTENSION	1
22	113490	NUT, SPRING	1
23	127890	NUT, LOCK 1/2-13	3
24	131960	VERTICAL LINK SPRING	1
25	143710	PIN, SNAPPER	1
26	152880	BAR, RATCHET	1
27	160560	HANDLE ASSY,	1
28	161540	PIN WLDT, PIVOT	1
29	170530	BOLT, CRG 3/8-16 X 1"	4
30	254060	BOLT, CRG 5/16-18 X 1"	1
31	384270	BOLT, HHCS 1/2-13 X 7	1
32	600110	NUT, HFH NYLOC 5/16-18	4
33	642110	AUGER FEEDER ASSY, JR	1
34	642310	MOUNT WLDT,	1
35	642350	MOUNT WLDT, SWIVEL AF	1
36	642440	CHANNEL, LIFT	1
37	642450	SUPPORT, TOP	1
38	642460	BRACE, STRIP	1
39	642470	CRADDLE WLDT, AF	1
40	990840	BOLT, HHCS 1/2-13 X 3"	1

AUGER FEEDER ASSEMBLY



ITEM NO.	PART NUMBER	DESCRIPTION	QTY.
1	005360	NUT, HEX 1/2-13	3
2	005370	WASHER, LOCK 1/2	3
3	011530	KEY, SQ, 1/4X1-1/4	1
4	012310	BEARING ADAP.,	1
5	012330	FLG., 7/8-1.0 BRG, 3R BOLT	2
6	012410	BOLT, CRG 5/16-18X3/4	4
7	013600	PIN, ROLL .25 X 2	1
8	014770	BOLT, HHCS .50-13X1.50	3
9	021180	WASHER, LOCK 3/8	6
10	021190	WASHER, FLAT 3/8 STD	8
11	021560	GRIP CLUTCH HANDLE	1
12	022420	BOLT, HHCS 3/8-16 X 3/4"	4
13	022920	WASHER, FLAT 5/16 STD	4
14	023260	WASHER, FLAT 1/4 STD	2
15	023620	WASHER, LOCK 5/16	7
16	023630	NUT, HEX 5/16-18	7
17	027260	NUT, HEX 3/8-16 GR5	2
18	027660	NUT, HEX 1/4-20 GR5 ZN	2
19	029440	WASHER, LOCK 1/4 SAE	2
20	031560	BOLT, HHCS 1/4-20 X 2-1/2	2
21	033460	SPACER, .38 IDX.56 ODX.312	6
22	129260	CLIP, 1/8" MALLEABLE WIRE	2
23	159830	ROPE, WIRE (CABLE)	1
24	160140	COLLAR, SHAFT	1
25	170530	BOLT, CRG 3/8-16 X 1"	2
26	211490	ROPE, POLYPROPYLENE 110"	1
27	254060	BOLT, CRG 5/16-18 X 1"	3
28	585120	MOTOR, HYD 12 CU.IN.	1
29	585130	VALVE ASSY, HYD	1
30	585150	ADAPTER, TEE-8 MJIC	1
31	585180	HOSE ASSY, HYD 1/2-20"	2
32	626825	FITTING, HYD 45°	1
33	642120	HOUSING WLDT,	1
34	642250	HANDLE WLDT, E-STOP	1
35	642270	PLATE, MOTOR	1
36	642280	AUGER WLDT, 6" AF	1
37	642300	GRATE, AF JR	1
38	MP32.02101	FITTING, HYD STRAIGHT	2
39	MP32.03794	ADAPTER, 90° ELBOW	1

NOTES:

Blank lined paper with a faint background watermark.

[illegible]

NOTES:



NOTES:



Art's-Way Manufacturing Co., Inc. TECHNICAL MANUALS

Manuals are available from your local dealer or Art's-Way Manufacturing Co., Inc. for the operation, service, and repair of your machine. For prompt convenient service, contact your local dealer for assistance in obtaining the manuals for your machine.

Your local dealer can expedite your order for operator manuals, illustrated parts catalogs, service manuals, and maintenance records.

Always give the Machine Name, Model, and Serial Number so your local dealer can provide the correct manuals for your machine.

Art's-Way Manufacturing Co., Inc. reserves the right to make improvements in design or changes in specifications at any time without incurring any obligation to install them on units previously sold.

Except as expressly authorized, no part of this manual may be reproduced, copied, transmitted, disseminated, downloaded or stored in any storage medium, for any purpose without the express prior written consent of Art's-Way Manufacturing Co., Inc.

ART'S-WAY MANUFACTURING CO., INC.

HWY 9 WEST - PO Box 288

Armstrong, IA. 50514 U.S.A

© Copyright 2012

ART'S-WAY MANUFACTURING CO., INC.

All Rights Reserved