



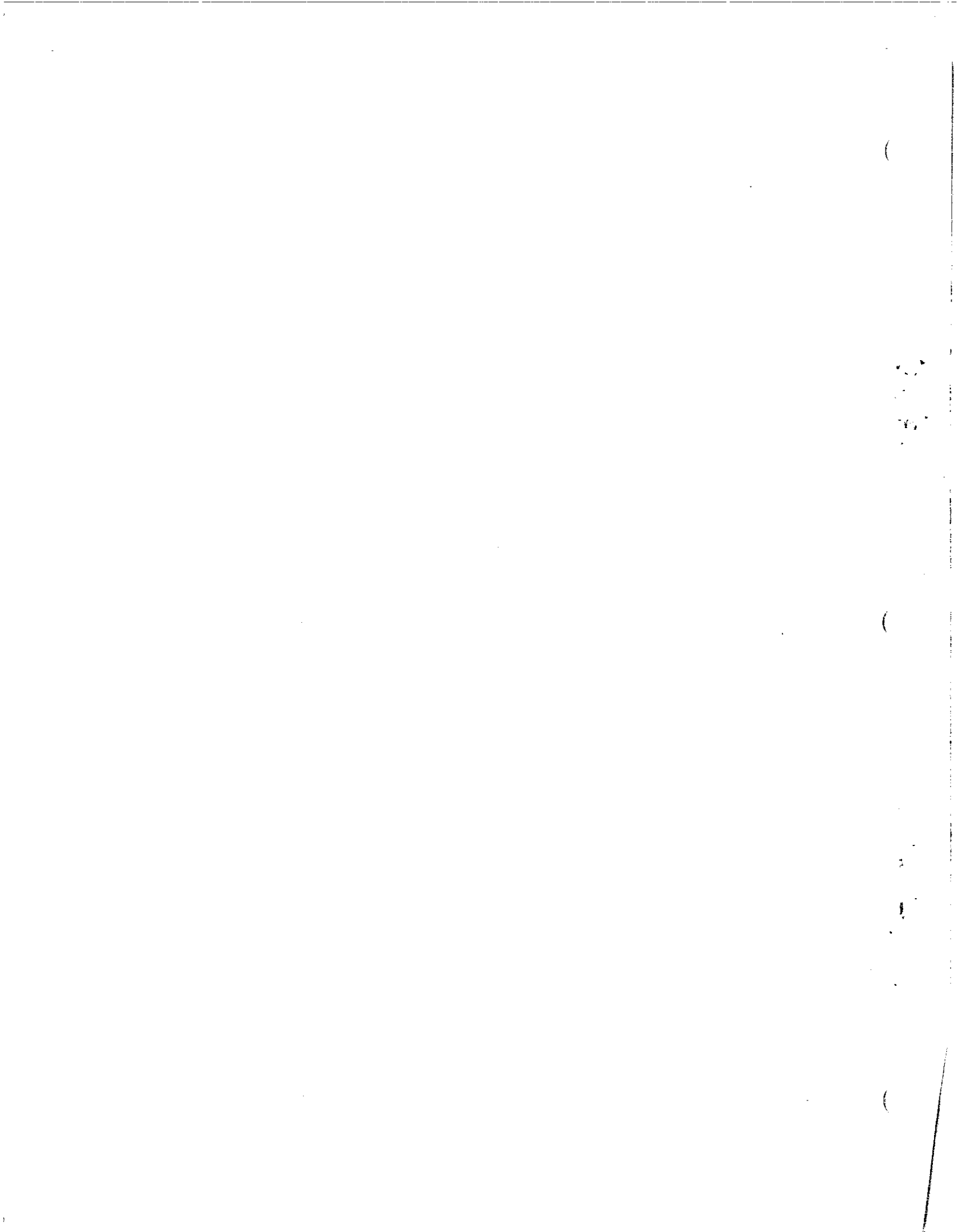
Defoliator

Model 786A & 638

Illustrated Parts List

248890 (G)
0800

Art's-Way Manufacturing Co., Inc.



TO THE OWNER

Congratulations on the purchase of your new Art's-Way Defoliator. You have selected a top quality machine that is designed and built with pride to ensure you have many years of efficient, reliable service.

Even if you are an experienced operator of this or similar equipment, *we ask you read the Operator's Manual before running this defoliator.* The way you operate, adjust and maintain this unit will have much to do with its successful performance. Any further questions you may have about this piece of Art's-Way equipment should be directed to your local Art's-Way dealer or to Art's-Way Manufacturing Co., Inc., Armstrong, Iowa, 50514, (712) 864-3131.

Specifications And Design Are Subject To Change Without Notice

Art's-Way Manufacturing Co., Inc. is continually making product improvements. In doing so, we reserve the right to make changes or add improvements to our products without obligation for the equipment previously sold.

Because modifications to this defoliator may effect the performance, function and safety of its operation, no modifications are to be made without the written permission of Art's-Way Manufacturing Co., Inc. Any modifications made without the written permission of Art's-Way Manufacturing Co., Inc. shall void the warranty of this product.

In the interest of continued safe operation of this defoliator, *pay particular attention to the safety alert symbol throughout this Manual.*

Art's-Way Manufacturing Co., Inc. Statement Of Product Liability

Art's-Way Manufacturing Co., Inc. recognizes its responsibility to provide its customers with a safe and efficient product. Art's-Way attempts to design and manufacture its product in accordance with accepted engineering practices in effect at the date of design. This statement should not be interpreted to mean that our products will protect against the user's own carelessness or failure to follow common safety practices, as set forth in this manual, nor will Art's-Way be liable for any such act. In addition, Art's-Way assumes no liability for product altered or modified in any way by users or anyone other than an authorized dealer.

Important Warranty Information

The warranty for this defoliator appears on page iv of this Manual. In order to establish proper warranty registration, the Warranty Registration and Dealer Pre-Delivery Checklist must be completed and returned to the factory. Failure to comply with this requirement may result in reduced warranty allowances.

PARTS AND SERVICE

As the new purchaser of your Defoliator, it is very important to consider the following factors:

- A. Original Quality**
- B. Availability of Service Parts**
- C. Availability of adequate Service Facilities**

Art's-Way Manufacturing Co., Inc. has an excellent dealership network ready to answer any questions you may have about your Defoliator. Parts for your machine may be ordered through our dealers. When placing a parts order, please have the model and serial number ready. This will allow the dealer to fill your order as quickly as possible.

For your convenience, we have provided this space for you to record your model number, serial number and the date of purchase, as well as your dealer's name and address.

Owner's Name: _____

Owner's Address: _____

Purchase Date: _____

Dealership Name: _____

Dealership Address: _____

Dealership Phone No.: _____

Building on a
Art's-Way
Tradition of Quality

SERIAL NO.

MODEL NO.

Manufactured By
Art's-Way Manufacturing Co., Inc.
Armstrong, IA

Machine Serial Number Location

(Left front corner of the main housing.)

Enter the serial number and model number of your defoliator in the space provided above.

TABLE OF CONTENTS

TO THE OWNER	i
Specifications and Design are Subject to Change without Notice	
Art's-Way Manufacturing Co., Inc. Statement of Product Liability	
Notice to the Customer	
PARTS AND SERVICE	ii
LIMITED WARRANTY	iv
SAFETY FIRST	v
SAFETY GUIDELINES	vi
Before Operating	vi
During Operation	vi
Maintenance Safety	vi
Hydraulic Safety	vi
Transportation Safety	vii
Storage Safety	vii
Tire Safety	vii
Assembly Safety	vii
PTO Assembly, Constant Velocity - 356840 - 1-3/8", 286280 - 1-3/4:	1
Gearbox 1.5 to 1 - 244180	2
Tongue Assembly - 234420	3
786A Basic Unit - 234640	6,7
638 Basic Unit - M475880	8,9
Dual Fixed Carrier Wheels - M234150	10,11
Dual Steerable Wheels - 638 & 786A - M380120	12, 13
Dual Offset Carrier - M492140	13.10, 13.20
Drive & Idler Shield-Rubber Front - M380590 M253000	14,15
Drive, Idler & Shield-Steel Front 638 & 786A - M380600	16,17
Idler Assembly #1 Rotor - M234850	18
Idler Assembly #2 Rotor - M234860	19
Rubber Flail Cluster Assembly 12" 4Pin - M394240	20
Rubber Flail Cluster Assembly 12" 6Pin - M394230	21
2 Row Steel Flail Cluster Assembly 638 - M438750, 786A - 438740	22
Rubber Flail Cluster Assembly 16" 4Pin - M394260	23
Rubber Flail Cluster Assembly 16" 6Pin - M394250	24
Hydraulic Scalper Plumbing	25
Scalper Attachment, 4 Row Hydraulic 784A - 254050	26
Scalper Attachment, 6 Row Hydraulic 786A - 254040, 630 - 258700	27
Scalper Assembly Hydraulic - 255580	28
Head Assembly, Hydraulic Scalper - 255530	29
Scalper Attachment, Mechanical - Knife & Disc Version	30
Knife Scalper Assembly Mechanical Left Hand - 663015, Right Hand - 663016	31
Disc Scalper Assembly Mechanical - 462310	32
Road Hazard Lights Assembly - M477991	33
Safety Decal, Decal Location - M475910	34
Specifications	35

LIMITED WARRANTY

Art's-Way Manufacturing Co., Inc. warrants the products it sells to be free from defects in material and workmanship for a period of one (1) year after the date of delivery to the first purchaser, subject to the following conditions:

- **Art's-Way Manufacturing Co., Inc.** obligation and liability under this warranty is to repair or replace (at the company's option) any parts which upon manufacture were defective in material or workmanship.
- All parts and repairs under this warranty shall be supplied at an authorized **Art's-Way Manufacturing Co., Inc.** dealer or at the factory, at the option of **Art's-Way Manufacturing Co., Inc.**
- **Art's-Way Manufacturing Co., Inc.** warranty does not extend to parts and elements not manufactured by **Art's-Way Manufacturing Co., Inc.** and which carry the warranty of the other manufacturer.
- Transportation or shipping to an authorized dealer for necessary repairs is at the expense of the purchaser.
- **Art's-Way Manufacturing Co., Inc.** makes no other warranty expressed or implied and makes no warranty of merchantability or fitness for any particular purpose beyond that expressly stated in this warranty. **Art's-Way Manufacturing Co., Inc.** liability is limited to the terms set forth in this warranty and does not include any liability for direct, indirect, incidental or consequential damages or expenses of delay and the Company's liability is limited to repair or replacement of defective parts as set forth herein.
- Any improper use, and maintenance, including operation after discovery of defective or worn parts, operation beyond the rated capacity, substitution of parts not approved by **Art's-Way Manufacturing Co., Inc.** or any alteration or repair by other than authorized **Art's-Way Manufacturing Co., Inc.** dealer which affects the product materially and adversely, shall void this warranty.
- No dealer, employee or representative is authorized to change this warranty in any way or grant any other warranty unless such change is made in writing and signed by an officer of **Art's-Way Manufacturing Co., Inc.** at its home office.
- Some states do not allow limitations on how long an implied warranty lasts or exclusions of, or limitations on relief such as incidental or consequential damages, so the above limitations or exclusions may not apply to you. This warranty gives you the specific legal rights and you may have other rights which vary from state to state.

SAFETY FIRST

“A careful operator is the best insurance against an accident.”

(National Safety Council)

Most accidents can be prevented if the operator:

- fully understands how the machine functions
- can anticipate situations which may produce problems
- can make necessary corrections before problems develop.



Figure 1: The Universal Safety Alert Symbol

The American Society of Agricultural Engineers has adopted the *Universal Safety Alert Symbol* (Figure 1) as a way to identify areas of potential danger if the equipment is not operated correctly. *Please be alert whenever you see this symbol in the manuals or on your Defoliator.*

Art's-Way Manufacturing Co., Inc. strives to make our equipment as safe as it can possibly be. The Defoliator conforms to applicable safety standards at the time of manufacturing. A safety conscious equipment operator makes an effective accident-prevention program complete.

Safety features and instructions for the Defoliator models are detailed elsewhere in the Operator's Manual. It is the responsibility of the owner to ensure that *all* operators read and understand the Manual before they are allowed to operate the defoliator. (*Occupational Safety and Health Administration (OSHA) regulation 1928.57.*)

Notices of Danger, Warning and Caution

Watch for these words on the defoliator and in this Manual to alert you to important safety messages:



DANGER: Immediate and specific hazard which *will* result in severe personal injury or death if proper precautions are not taken.



WARNING: Specific hazard or unsafe practice *could* result in severe personal injury or death if proper precautions are not taken.



CAUTION: A reminder of good safety practices. Personal injury *could* result if proper procedures are not followed.



SAFETY GUIDELINES



CAUTION: Remember, a careful operator is the best insurance against an accident.



CAUTION: Read and Understand the Operator's Manual and all the safety decals before operating the defoliator. Review all safety instructions with all operators annually.

Before Operating

- **Do not** wear loose fitting clothing as it may catch in moving parts.
- Make sure to install and/or secure all guards and shields, including the tractor power take-off master shield, before starting or operating the defoliator.
- Be sure that the correct implement driveline parts are used and that they are properly secured.
- Install the safety chain when attaching the defoliator to the tractor.
- Clear the area of bystanders, especially children, when making repairs, adjustments or performing maintenance on the defoliator.
- **Do not** allow riders.
- Put all tractor and machine controls in "neutral" and disengage the PTO before starting. Follow the starting instructions according to your tractor manual.
- Operate the defoliator only while seated on the tractor seat.
- Make sure that unit is adequately supported with safety blocks or safety stands when changing tires or working on it.

During Operation

- Keep hands, feet, hair and clothing away from moving parts.
- Keep all shields and guards in place and in good repair.
- Keep all children and bystanders away from the defoliator while in operation.
- **Do not** allow riders while the defoliator is in operation.

- **Do not** attempt to unclog, clean or adjust the defoliator while it is running
- Before servicing, adjusting, repairing or unplugging the defoliator, stop the tractor engine, place all the controls in neutral, set the parking brake, remove the ignition key and wait for all moving parts to stop.
- Stay away from overhead power lines. Electrocution can occur even without direct contact.
- Keep all hydraulic lines, fittings, and couplers tight and free of leaks. (See the Hydraulic Safety section, below.)

Maintenance Safety

- Follow all operating, maintenance and safety instructions found in this Manual and Operator's Manual.
- Before servicing, adjusting, repairing or unplugging the defoliator, stop the tractor engine, place all the controls in neutral, set the parking brake, remove the ignition key and wait for all moving parts to stop.
- Use only the tools, jacks and hoists that are of sufficient capacity for the job.
- Use support blocks or safety stands when changing tires or working under the machine.
- Follow good shop practices of keeping the service area clean and dry and use adequate light for the job at hand.
- Make sure all shields/guards are in place and properly secured when maintenance work is complete.

Hydraulic Safety

- Before applying pressure from the hydraulic system make sure all lines, fittings and couplers are tight and in good condition.
- Relieve pressure from the hydraulic circuit before servicing or disconnecting from the tractor.
- Replace any worn, cut, abraded, flattened or crimped hoses.
- **Do not** make any temporary repairs to the hydraulic lines, fittings or hoses by using tape, clamps or cement. The hydraulic system operates under

SAFETY GUIDELINES

extremely high pressure and temporary repairs may fail suddenly and create a hazardous situation.

- Wear proper hand and eye protection when searching for a high-pressure hydraulic leak. Use a piece of wood or cardboard as a backstop instead of hands to identify and isolate a leak. If injured by a concentrated high-pressure stream of hydraulic fluid, seek medical attention immediately. Serious infection or toxic reaction can develop if hydraulic fluid penetrates the surface of the skin.
- Before applying pressure to the system, make sure all components are tight and that the lines, hoses and couplings are not damaged.

Transportation Safety

- Be sure to comply with all local regulations regarding transporting equipment on public roads and highways.
- Make sure the Slow Moving Vehicle (SMV) emblem and all lights and reflectors required by local highway and transportation authorities are in place, clean and clearly visible to all oncoming or following traffic.
- *Do not* allow riders while transporting.
- Make sure the defoliator is securely attached to the tractor and install a safety chain to the defoliator install a retainer through the drawbar pin and attach the safety chain.
- *Do not* fail to latch the tractor brake pedals together.
- *Do not* exceed 10 mph (16 km/h) when transporting the defoliator. Always reduce speed on rough roads and surfaces, or when going down inclines.
- Drive slowly when turning and always use turn signals on the tractor to indicate your turning intentions to the other traffic.
- A dealer installed Road Light Kit is available. It includes warning lights that plug into your tractor's light connector. The red tail light will illuminate whenever the tractor road lights are turned on.
- The weight of the trailed machine should *NEVER* exceed the weight of the towing vehicle.
- Check clearances carefully whenever the machine is towed.

- Stay away from overhead or side obstructions and power lines during transport. Electrocution can occur even without direct contact.

Storage Safety

- Store the defoliator in an area away from human activity.
- *Do not* permit children to play on or around the stored machine.
- Park the defoliator on level ground.

Tire Safety

- Have a qualified tire dealer or repair service perform tire repairs.
- *Do not* attempt to mount a tire unless you have the proper equipment and experience to do the job.
- Follow proper procedures when mounting a tire on a rim to prevent an explosion which could result in serious injury.
- *Do not* substitute tires of lesser road rating and capacity for the original equipment tires.



CAUTION: Failure to follow proper procedures when mounting a tire on a wheel or rim can produce an explosion which may result in serious injury or death. Do not attempt to mount a tire unless you have the proper equipment and experience to perform the job. Have it done by your dealer or a qualified tire repair service.

Assembly Safety

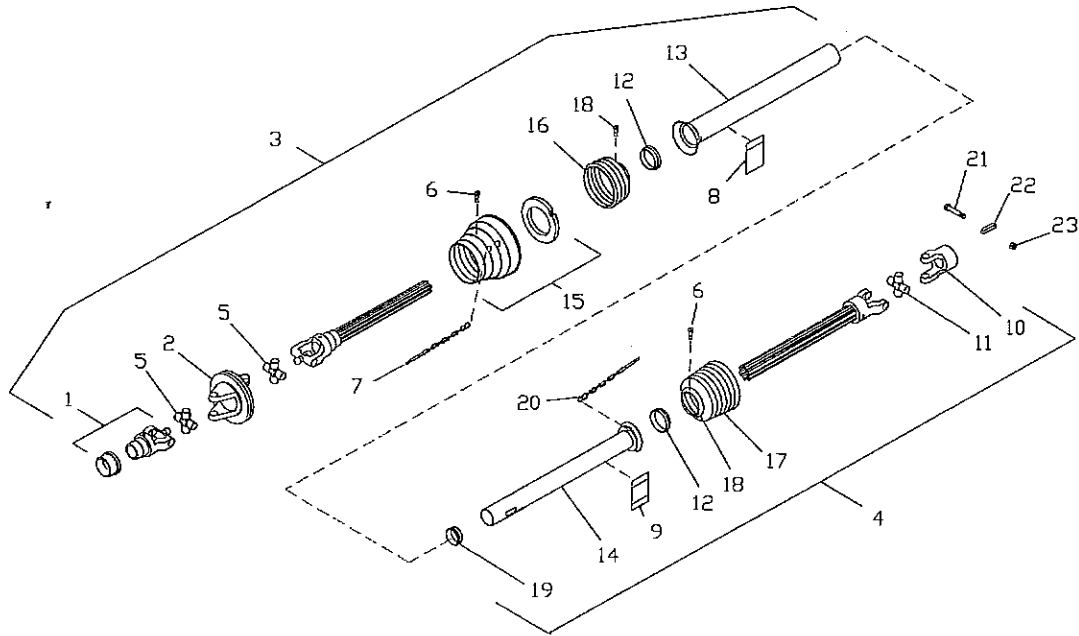
- Use adequate manpower to perform assembly procedures safely.
- Assemble the defoliator in an area with sufficient space to maneuver the largest components and allow easy access to all sides of the machine.
- Use only forklifts, lift cranes, jacks and tools with sufficient capacity for the loads.
- *Do not* allow spectators in the working area.

*Remember:
The Best Operator is a Safe Operator.*

NOTES

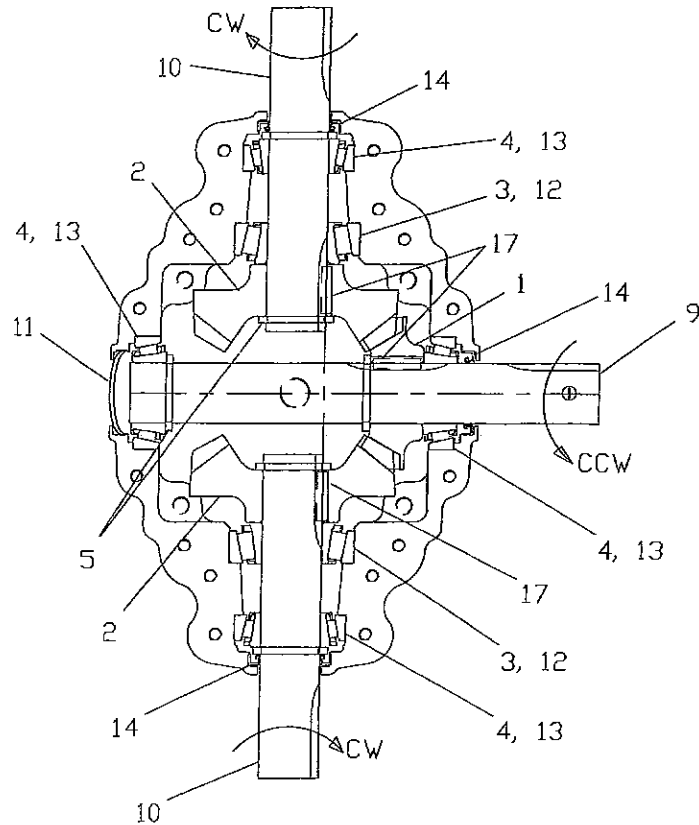
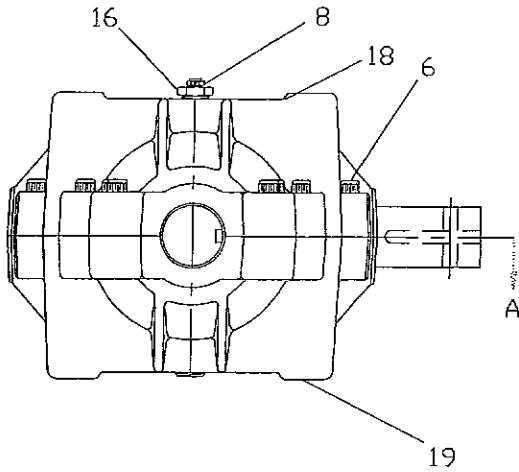
PTO ASSEMBLY, CONSTANT VELOCITY

356840 - 1-3/8", 286280 - 1-3/4"



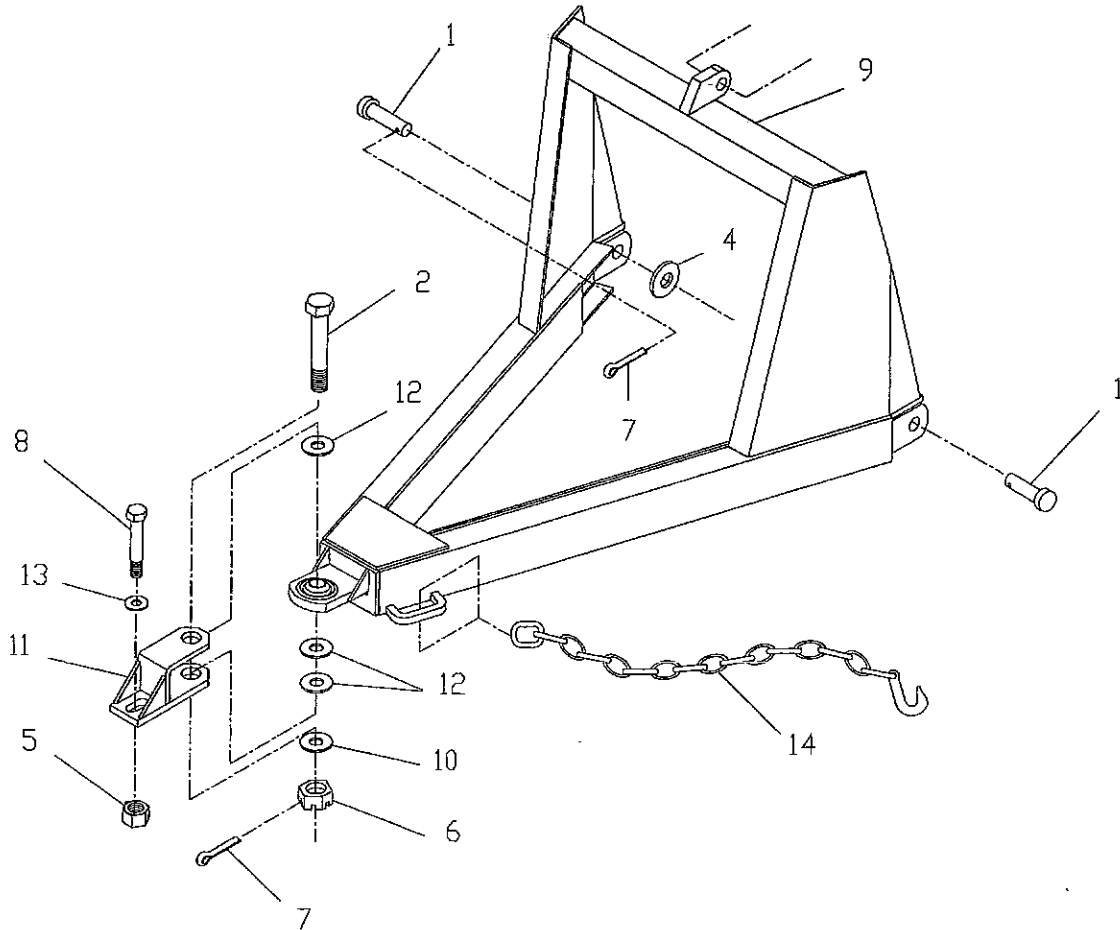
Item	Part Number	Qty.	Description
1	345830	1	Assembly, Yoke 1-3/8"-21 Spline
	340210	1	Kit, Collar 1-3/8"-21
1	345840	1	Assembly, Yoke 1-3/4" Spline
	340200	1	Kit, Collar 1-3/4"-20
2	345850	1	Yoke, Double
3	357840	1	Assembly, PTO CV2580 Tractor Half (1-3/8")
3	287460	1	Assembly, PTO CV2580 Tractor Half (1-3/4")
4	357850	1	Assembly, PTO CV2580 Implement Half (1-3/8")
4	287450	1	Assembly, PTO CV2580 Implement Half (1-3/4")
5	345870	2	Kit, Cross and Bearing CV
6	345980	8	Screw, in item 15, 16 & 17
7	354190	1	Chain, Safety 600mm
8	268860	1	Decal, Outer on item 13
9	340180	1	Decal, Inner on item 8
10	345910	1	Yoke, 1-3/4" RB, 3/8" Keyway
11	182230	1	Kit, Cross & Bearing
12	182900	2	Ring, Bearing SC25
13	357880	1	Tube, Outer Shield Oval (1-3/8")
13	287490	1	Tube, Outer Shield Oval (1-3/4")
14	357890	1	Tube, Inner Shield Round (1-3/8")
14	287500	1	Tube, Inner Shield Round (1-3/4")
15	345950	1	Assembly, CV Cone & Bearing
16	345960	1	Shield, Cone 3 Rib
17	340140	1	Shield, Cone 7 Rib
18	349250	1	Collar, Reinforced
19	340190	1	Bearing, Support
20	182890	1	Chain, Safety
21	990870	1	Bolt, HHCS 3/8"-16 x 3"
22	021530	1	Key, Square 3/8" x 2"
23	E552044	1	Nut, Hex Lock 3/8"-16

GEARBOX 1.5 TO 1 - 244180



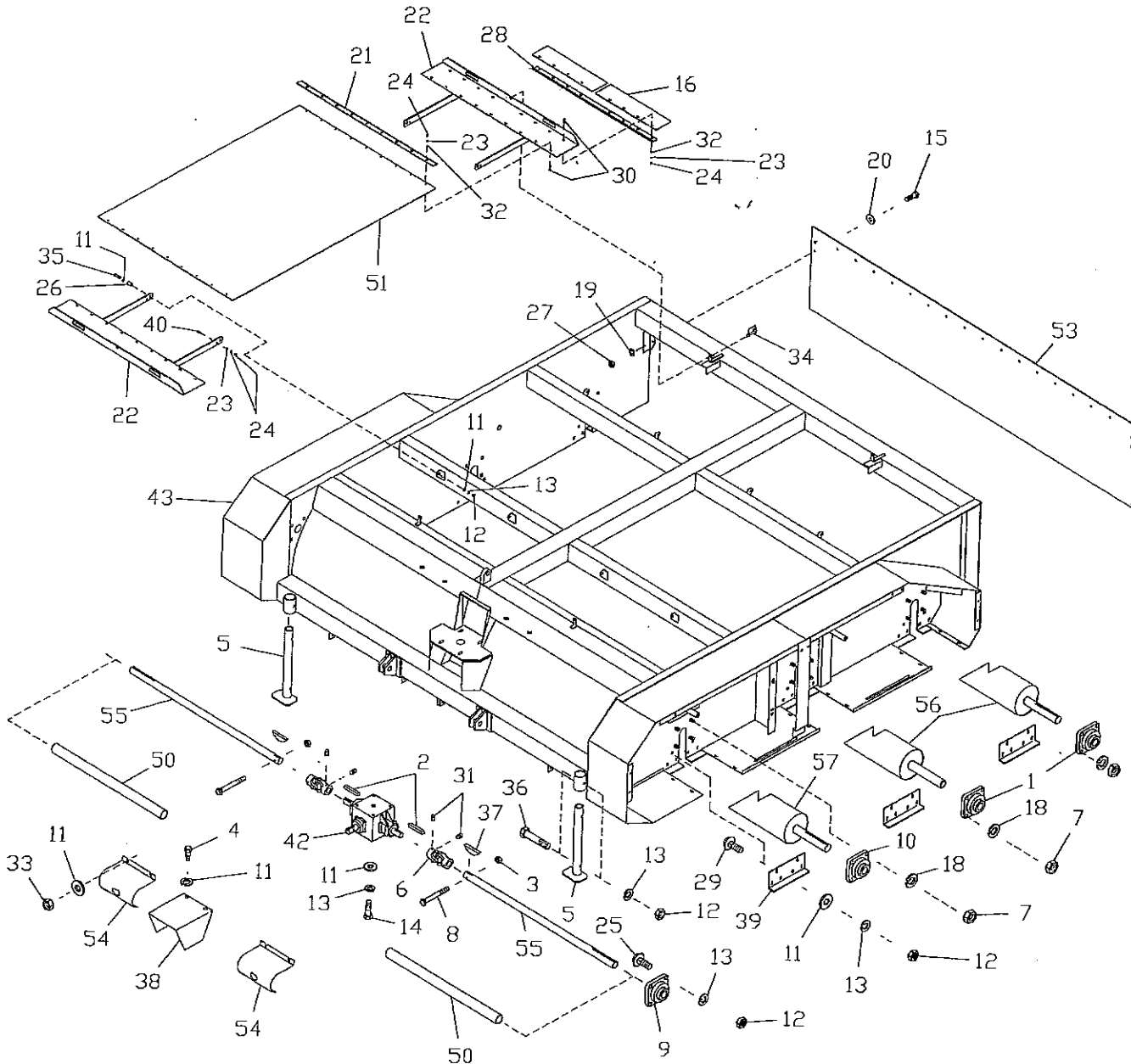
Item	Part Number	Qty.	Description
1	247790P	1	Gear, 20 Tooth 1.5:1
2	247740P	2	Gear, 30 Tooth 1.5:1
3	V241091P	2	Bearing, Cone
4	235770P	4	Bearing, Cone
5	247670P	6	Ring, Retaining
6	247830P	16	Bolt, SHCS 3/8"-16 x 2-1/4" Grade 8
7	247760P	1	Plug, 1/4" NPT
8	247820P	1	Plug, Pressure Relief
9	247780P	1	Shaft, Cross
10	247710P	2	Shaft, Pinion
11	247840P	1	Plug, End
12	E072317P	2	Cup, Bearing
13	129770P	4	Cup, Bearing
14	247660P	3	Seal, Oil 1-3/4" x 2.44" x .31"
15	006370P	1	Plug, 1/2" NPT
16	247810P	1	Bushing, 1/2" NPT to 1/8" NPT
17	247700P	3	Key, Square 3/8" x 1.45"
18	247800P	1	Casting, Top
19	247770P	1	Casting, Bottom

TONGUE ASSEMBLY - 234420



Item	Part Number	Qty.	Description
1	E580155	2	Pin, Clevis 1-1/8"
2	E096105	1	Bolt, Special 1-1/8" x 6"
3	-	-	-
4	034260	2	Washer, Flat 1-1/8"
5	E552046	1	Nut, Stover 5/8"
6	E552092	1	Nut, Slotted 1-1/8"
7	E580046	3	Pin, Cotter 1/4" x 2-1/2"
8	056720	1	Bolt, HHCS 5/8" x 4"
9	234430	1	Weldment, Tongue
10	E829021	1	Washer, Flat 1-1/8"
11	250220	1	Weldment, Hitch Bracket
12	231970	3	Washer, Hardened 1-1/8"
13	020430	1	Washer, Flat 5/8"
14	1765302	1	Chain, Safety 5/16"

786A BASIC UNIT - 234640

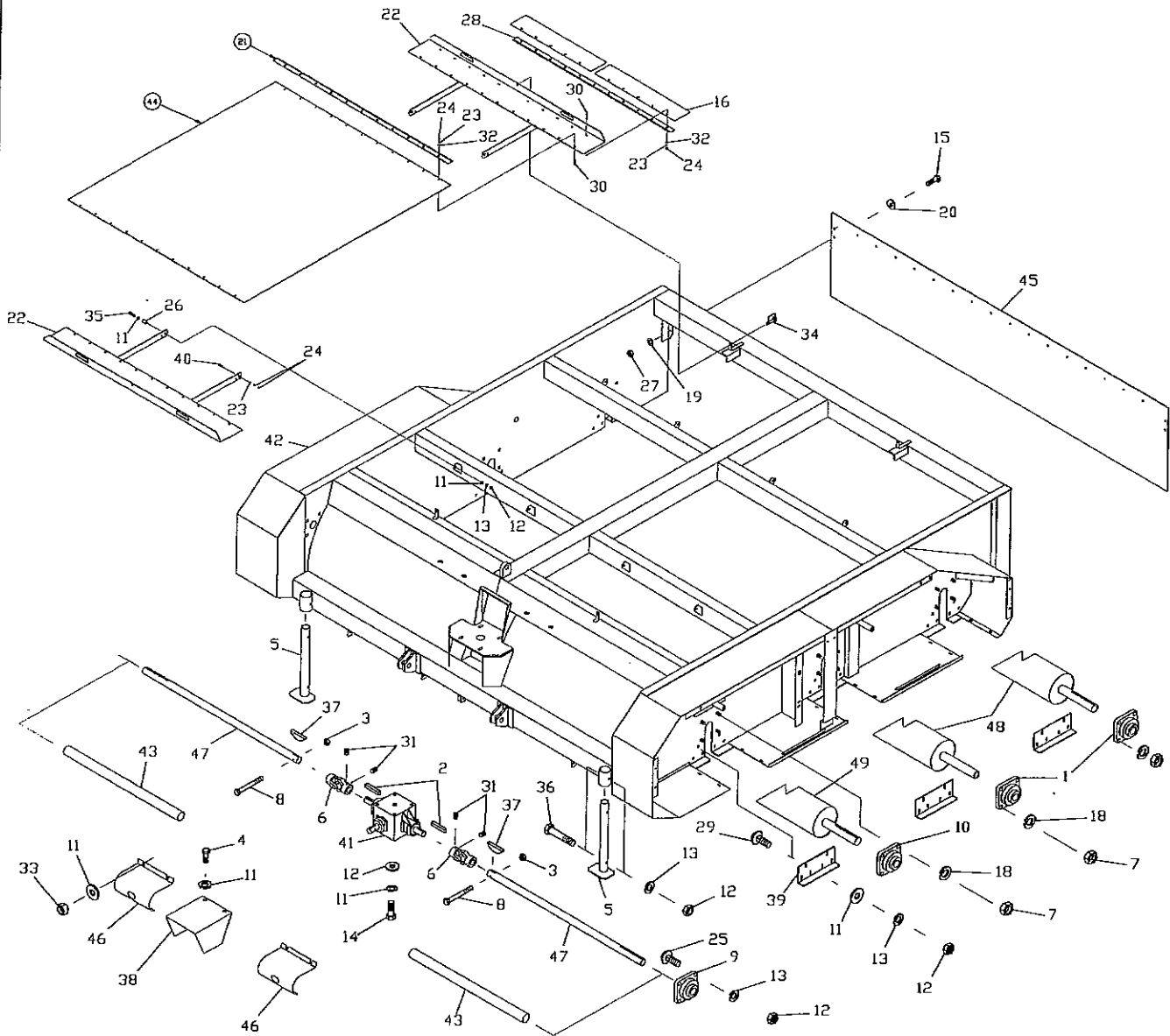


Item	Part Number	Qty.	Description
1	E072445	4	Bearing, Cast Iron Flange 2.0"
2	E388074	2	Key, Square 3/8" x 2-1/4"
3	E552044	2	Nut, Lock 3/8"-16
4	E672030	2	Bolt, HHCS 1/2"-13 x 3/4"
5	E748004	2	Stand, Jack
6	E823023	2	Joint, Universal 35N 1-3/4" x 1-3/4"
7	I124589	24	Nut, Hex 5/8"
8	I189304	2	Bolt, HHCS 3/8"-16 x 3-1/4"

786A BASIC UNIT - 234640

Item	Part Number	Qty.	Description
9	R16260	2	Bearing, Flange w/eccentric Lock Collar 1-3/4"
10	R66250	2	Bearing, Flange w/eccentric Lock Collar 2.18"
11	005200	60	Washer, Flat .562" x 1.38" x .109"
12	005360	54	Nut, Hex 1/2"-13
13	005370	60	Washer, Lock 1/2"
14	010730	4	Bolt, HHCS 1/2"-13 x 1-1/4"
15	012260	26	Bolt, HHCS 3/8"-16 x 1"
16	424720	4	Cover, Rear Bottom 786A
17	019070	1	Pin, Cotter 3/16" x 1"
18	020440	24	Washer, Lock 5/8"
19	021180	26	Washer, Lock 3/8"
20	021190	26	Washer, Flat .438" x 1" x .083"
21	424760	4	Bolt, Strip 72" Long
22	424770	4	Weldment, Top Cover Holder 786A
23	023620	72	Washer, Lock 5/16"
24	023630	80	Nut, Hex 5/16"-18
25	025390	8	Bolt, Carriage 1/2"-13 x 1-3/4"
26	231030	8	Spacer
27	027260	26	Nut, Hex 3/8"-16
28	421290	2	Bolt, Strip 65" Long
29	30470	36	Bolt, Carriage 1/2"-13 x 1-1/4"
30	254060	64	Bolt, Carriage SSN 5/16"-18 x 1"
31	218660	6	Screw, AHSS BLO 3/8"-16 x 3/8" Grade 2
32	022920	64	Washer, Flat 5/16"
33	127890	4	Nut, Dist Thread Lock 1/2"-13
34	143710	4	Pin, Snapper 3/8" x 2-1/2"
35	1770500	8	Bolt, HHCS 1/2"-13 x 1-3/4"
36	177060B	2	Bolt, HHCS 1/2"-13 x 3-1/2"
37	231950	2	Key, Woodruff #1222-1 3/8" x 2-3/4"
38	234560	1	Shield, Gearbox
39	234580	6	Angle, Side Support
40	005900	8	Bolt, HHCS 5/16"-18 x 1"
41	-	-	-
42	244180	1	Gearbox, 1.5 to 1 600 Series
43	278350	1	Weldment, Mainframe 786A
44	-	-	-
45	-	-	-
46	-	-	-
47	-	-	-
48	-	-	-
49	-	-	-
50	237460	2	Shield, Jackshaft 786A
51	446400	2	Cover, Top 786A
52	-	-	-
53	279680	1	Cover, Rear Drop 786A
54	255180	2	Shield, U-Joint
55	237650	2	Shaft, Jack 786A
56	251200	2	Weldment, Rotor Tube #2 and #3
57	224940	1	Weldment, Rotor 786A
58	-	-	-
59	-	-	-
60	963130	0.15	Oil, 90W (in gearbox)

638 BASIC UNIT - (M475880)

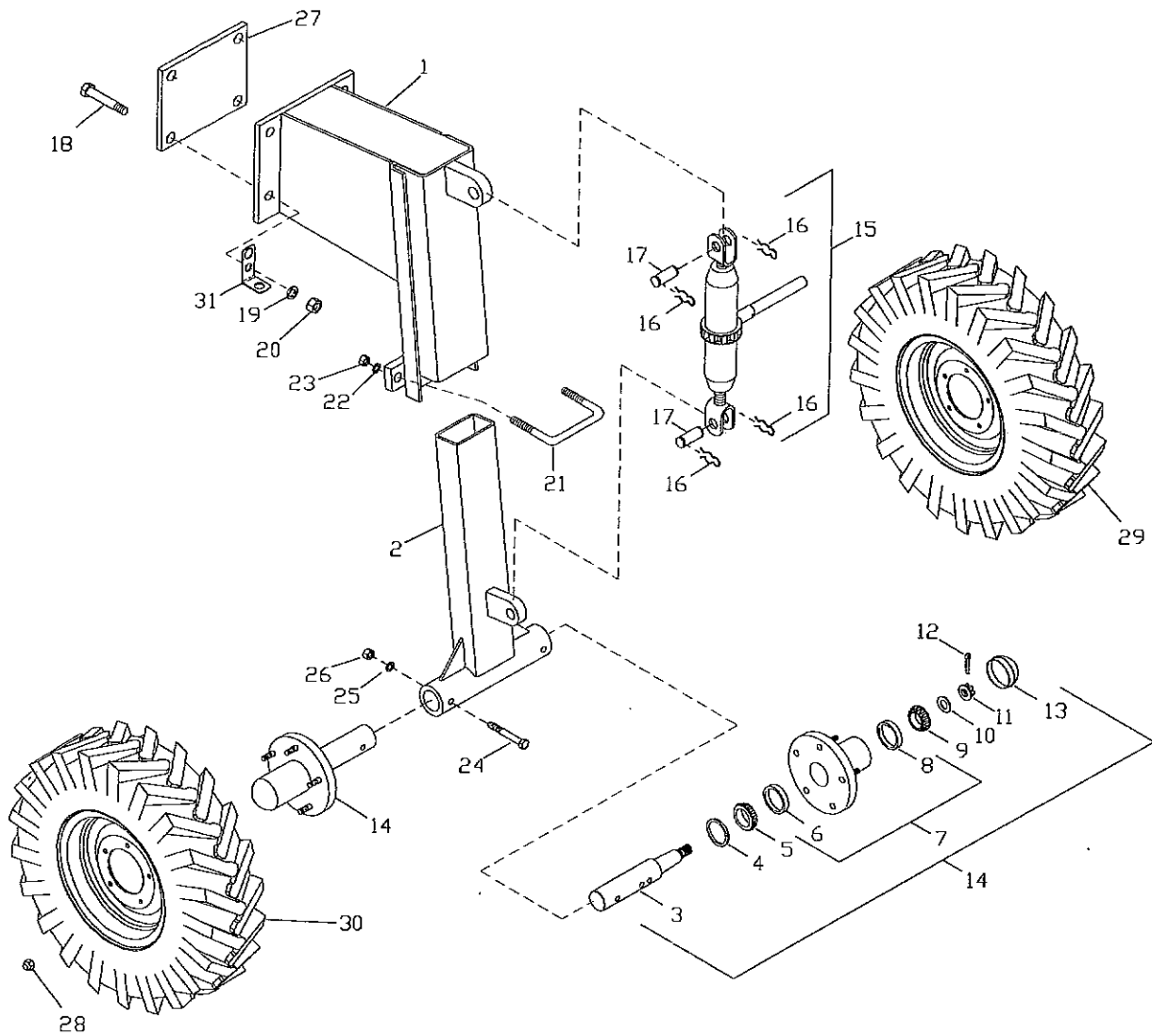


ITEM	PART NUMBER	QTY	DESCRIPTION
1	E072445	4	BEARING, 2.0" CAST IRON FLANGE
2	E388074	2	KEY, SQ. 3/8x2-1/4
3	E552044	2	NUT, LOCK 3/8-16 ZN
4	E672030	2	BOLT, HHCS 1/2-13x.75 G5 ZN
5	E748004	2	JACK STAND
6	E823023	2	JOINT, UNIVERSAL 35N 1.75x1.75
7	1124589	24	NUT, HEX 5/8-11 G5 ZN
8	991150	2	BOLT, HHCS 3/8-16x4.0 G5 ZN
9	R16260	2	BRG, FLNG. 1.75 W/ECCEN L. CLR.
10	R66250	2	BRG, FLNG. 2.18 W/ECCEN L. CLR.
11	005200	60	WASHER, FLAT .562x1.38x.109 ZN
12	005360	54	NUT, HEX 1/2-13 G5 ZN
13	005370	60	WASHER, LOCK 1/2 ZN
14	010730	4	BOLT, HHCS 1/2-13x1.25 G5 ZN
15	012260	34	BOLT, HHCS 3/8-16x1.0 G5 ZN

638 BASIC UNIT - (M475880)

ITEM	PART NUMBER	QTY	DESCRIPTION
16	475980	4	COVER, REAR BOTTOM 638
17	019070	1	PIN, COTTER 3/16x1.0 ZN
18	020440	24	WASHER, LOCK 5/8 ZN
19	021180	36	WASHER, LOCK 3/8 ZN
20	021190	34	WASHER, FLAT .438x1.00x.083
21	475960	4	STRIP, BOLT TOP 638
22	475950	4	HOLDER WLDT., TOP COVER 638
23	023620	92	WASHER, LOCK 5/16 ZN
24	023630	100	NUT, HEX 5/16-18 G5 ZN
25	025390	8	BOLT, CRG. 1/2-13x1.75 G5 ZN
26	231030	8	SPACER
27	027260	34	NUT, HEX 3/8-16 G5 ZN
28	475970	2	STRIP, BOLT BOTTOM 638
29	030470	36	BOLT, CRG. 1/2-13x1.25 G5 ZN
30	254060	84	BOLT, CRG. 5/16-18x1.0 SSN
31	218660	6	SCREW, AHSS 3/8-16x.5 PL.
32	022920	84	WASHER, FLAT 5/16 STD.
33	127890	4	NUT, DISTTHD. LOCK 1/2-13 G5
34	143710	4	PIN, SNAPPER 3/8x2.5 ZN
35	1770500	8	BOLT, HHCS 1/2-13x1-3/4
36	1770608	2	BOLT, HHCS. 1/2-13x3.5 G5 ZN
37	231950	2	KEY, WOODRF #1222-1 3/8x2.75
38	234560	1	SHIELD, GEARBOX
39	234580	6	ANGLE, SIDE SUPPORT
40	005900	8	BOLT, HHCS 5/16-18x1.0 GR5 ZN
41	244180	1	GEARBOX, 1.5 TO 1 600 SERIES
42	475930	1	MAINFRAME WELDMENT, 638
43	475640	2	SHIELD, 638 JACKSHAFT
44	475990	2	COVER, 638 TOP
45	475670	1	COVER, 638 REAR DRIP
46	255180	2	SHIELD, U-JOINT
47	475650	2	SHAFT, 638 JACK
48	475660	2	ROTOR TUBE WELDMENT, #2 & #3
49	475630	1	ROTOR WELDMENT, 638 #1 RBR.

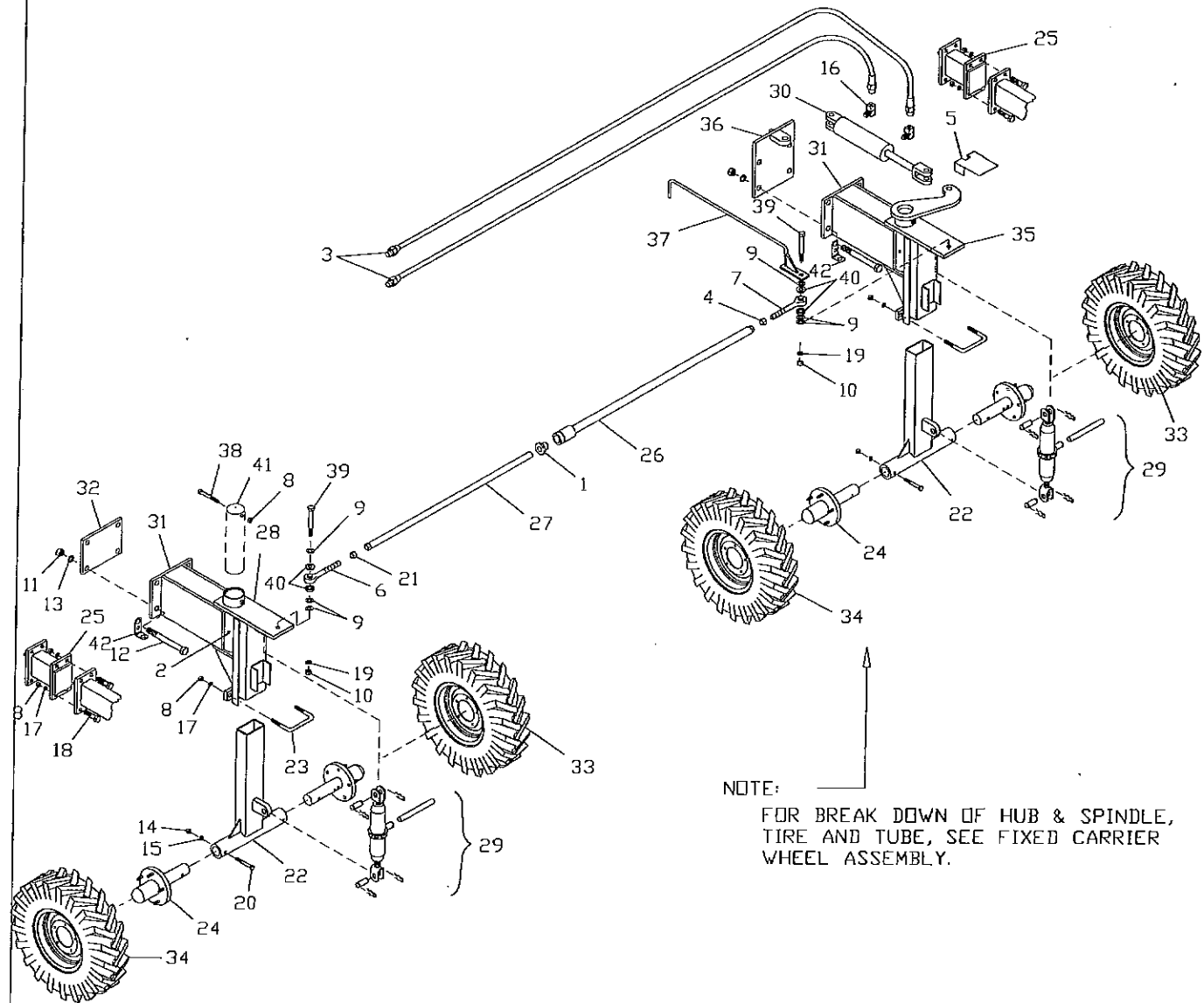
DUAL FIXED CARRIER WHEELS - (M234150)



DUAL FIXED CARRIER WHEELS - (M234150)

ITEM	PART NUMBER	QTY	DESCRIPTION
1	234180	4	STRUT WLDT, TOP WHEEL
2	234170	4	TUBE WELDMENT, AXLE
3	E728040	4	SPINDLE
4	E674023	4	SEAL, 1.50
5	044370	4	CONE, BEARING INNER
6	018850	4	CUP, BEARING INNER
7	E360040	4	HUB, 5-BOLT W/CUP & LUGS
8	018860	4	CUP, BEARING OUTER
9	012630	4	CONE, BEARING OUTER
10	E829019	4	WASHER, FLAT 7/8
11	129830	4	NUT, SLOTTED HEX 7/8
12	003950	4	PIN, COTTER 3/16 x 2
13	035420	4	CAP, HUB
14	234320	8	SPENDLE & HUB ASSY
15	250990	4	JACK, RATCHET
16	R41820	16	HAIRPIN, COTTER
17	R41810	8	PIN, YOKE
18	990980	16	BOLT, HHCS 3/4-10 x 7-1/2
19	036800	16	WASHER, LOCK 3/4
20	J14H794	16	NUT, HEX 3/4-10
21	234190	4	U-BOLT, 5/8 x 5 x 6-3/8
22	020440	8	WASHER, LOCK 5/8
23	I124589	8	NUT, HEX 5/8
24	038560	8	BOLT, HHCS 1/2 x 4.0
25	005370	8	WASHER, 1/2 LOCK
26	005360	8	NUT, HEX 1/2
27	234230	4	PLATE, STRUT MOUNTING
28	020730	40	NUT, WHEEL 1/2-20
29	413640	4	TIRE & WHEEL ASSY, RH
	241410	4	TIRE, 7.60-15 6 PLY GROUND DRIVE
	E816017	8	TUBE, M15
	413630	8	WHEEL, 15 x 6, 5-BOLT
30	413650	4	TIRE & WHEEL ASSY, LH
	241410	40	TIRE, 7.60-15 6 PLY GROUND DRIVE
	E816017	4	TUBE, M15
	413630	4	WHEEL, 15 x 6, 5-BOLT
31	466590	2	CLIP, HANDLE

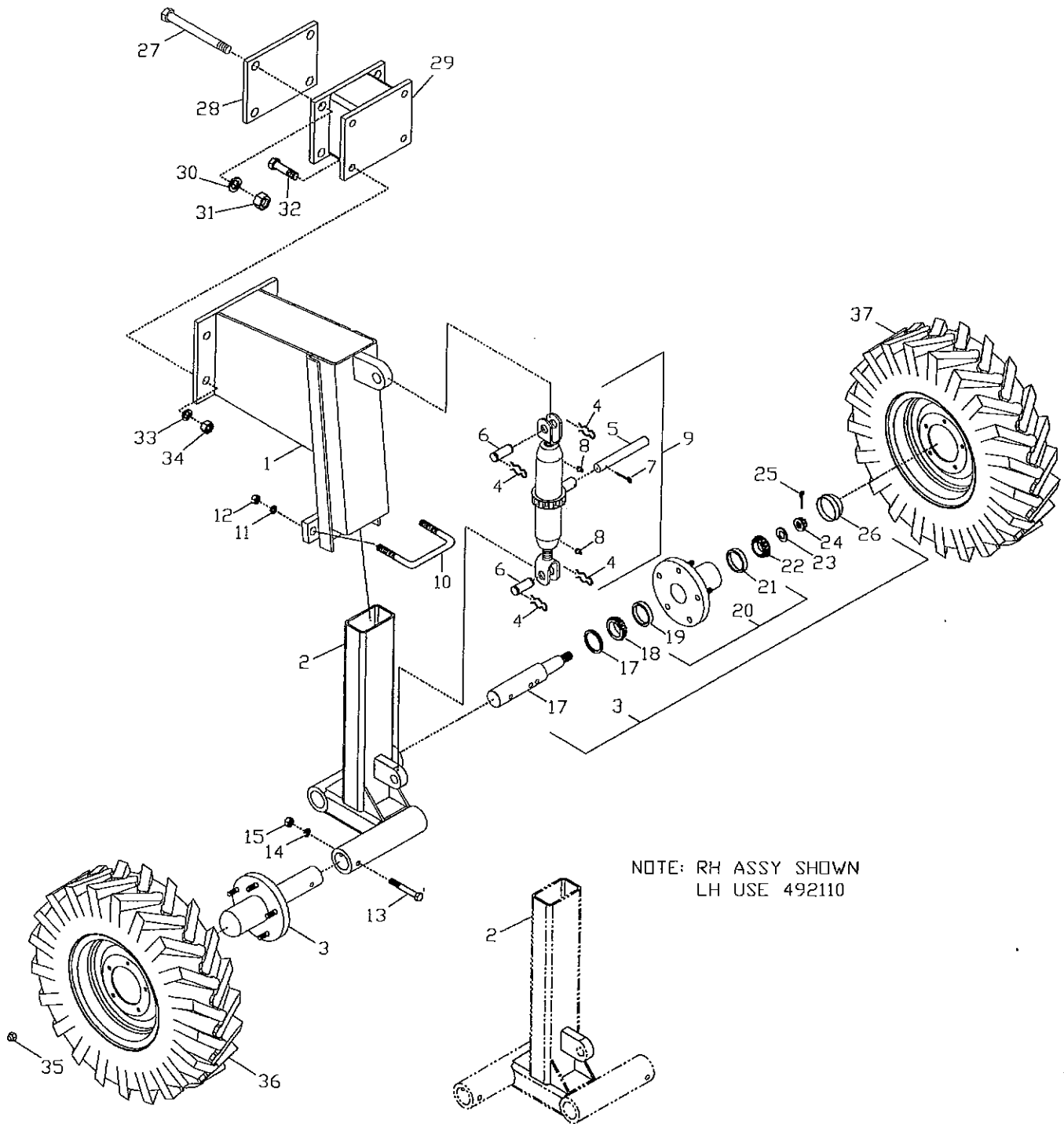
DUAL STEERABLE WHEELS - (M380120) 638 & 786A



DUAL STEERABLE WHEELS - (M380120) 638

1	E126108	1	BUSHING, SPL. TAPER P1 1.5
2	E334006	2	FITTING, LUBE 5/16 PRESS
3	E356113	2	HOSE, 1/2x300 HYDRAULIC
4	E552087	1	NUT, LH THREAD HEX 1.0
5	E694360	1	SHIELD, CYLINDER
6	414480	1	TURNBUCKLE END, 1.0 x 8.0 RH
7	414470	1	TURNBUCKLE END, 1.0 x 8.0 LH
8	I124589	14	NUT, HEX 5/8 Gr5 ZN
9	990710	6	WASHER, FLAT .81 x 2 x .14
10	J14H794	2	NUT, HEX 3/4" Gr5 ZN
11	J14H805	8	NUT, HEX 1.0" Gr5 ZN
12	R60962	8	BOLT, HHCS 1 x 7.50 Gr5 ZN
13	003350	8	WASHER, LOCK 1"
14	005360	4	NUT, 1/2 Gr5 ZN
15	005370	4	WASHER, LOCK 1/2 ZN
16	006240	2	ELBOW, STREET 1/2 x 90°
17	020440	12	WASHER, LOCK 5/8 ZN
18	023110	8	BOLT, HHCS 5/8 x 2.50 Gr5 ZN
19	036800	2	WASHER, LOCK 3/4
20	038560	4	BOLT, HHCS 1/2 x 4.0 Gr5 ZN
21	147310	1	NUT, HEX 1" ZN
22	234170	2	TUBE WLDT, AXLE 22-24"
23	234190	2	U-BOLT, 5/8 x 5.0 x 6.38
24	234320	4	SPINDLE & HUB ASSY, 5 BOLT
25	247390	2	SCALPER EXTENSION WLDT.
26	255230	1	TIE ROD WELDMENT, 638
26	247430	1	TIE ROD WELDMENT, 786A
27	247440	1	TIE ROD WELDMENT, LH
28	260750	2	STRUT WELDMENT, LH REAR
29	250990	2	JACK, REWORKED RATCHET
29	R41810	4	PIN, YOKE
29	R41820	8	PIN, HAIR COTTER
29	013170	2	ZERK, GREASE 1/8 NPT
29	196470	2	BODY, RATCHET JACK
29	250970	2	HANDLE, REWORKED
30	256230	1	CYLINDER, HYDRAULIC 3 x 8
30	384830	1	KIT, SEAL CROSS CYLINDER-3 x 8
31	260830	1	STRUT WELDMENT, FRONT
32	261280	1	PLATE, STRUT MOUNTING
33	413640	2	TIRE & WHEEL 7.50-15 RH
33	413630	4	WHEEL, 15 x 6LB, 5 HEAVY BOLT
34	413650	2	TIRE & WHEEL, 7.50-15 LH
34	413630	4	WHEEL, 15 x 6LB, 5 HEAVY BOLT
35	357120	1	STRUT WLDT, RH REAR
36	357140	1	PLATE WLDT, STRUT MTG
37	357160	1	ROD WLDT, STEERING INDICATOR
38	028330	1	BOLT, HHCS 5/8 x 4.50 Gr5 ZN
39	990590	2	BOLT, HHCS 3/4 x 4.0 Gr5 ZN
40	414460	4	SEAL, BALL TIE ROD
41	260910	1	SHAFT, PIVOT
42	466590	2	CLIP, HANDLE

DUAL OFFSET CARRIER (M492140)



DUAL OFFSET CARRIER (M492140)

ITEM	PART NUMBER	QTY	DESCRIPTION
1	234180	2	STRUT WLDT, TOP WHEEL
2	492110	1	TUBE WLDT, OFFSET AX. LH
2	492100	1	TUBE WLDT, OFFSET AX. RH
3	234320	4	SPINDLE AND HUB ASS'Y.
* 4	R41820	4	HAIRPIN, COTTER
* 5	250970	1	HANDLE, JACK
* 6	R41810	2	PIN, YOKE
* 7	R41840	1	PIN, HANDLE
* 8	013170	2	ZERK, GREASE 1/8"
9	250990	2	JACK, RATCHET
10	234190	2	U-BOLT, 5/8x5x6-3/8
11	020440	4	WASHER, LOCK 5/8"
12	I124589	4	NUT, HEX 5/8"
13	038560	4	BOLT, 1/2x4.0 HHCS
14	005370	4	WASHER, LOCK 1/2"
15	005360	4	NUT, HEX 1/2"

FOR SERVICE OF ITEM #9.
ITEMS MARKED WITH "*"

SERVICE PARTS FOR ITEM #3.

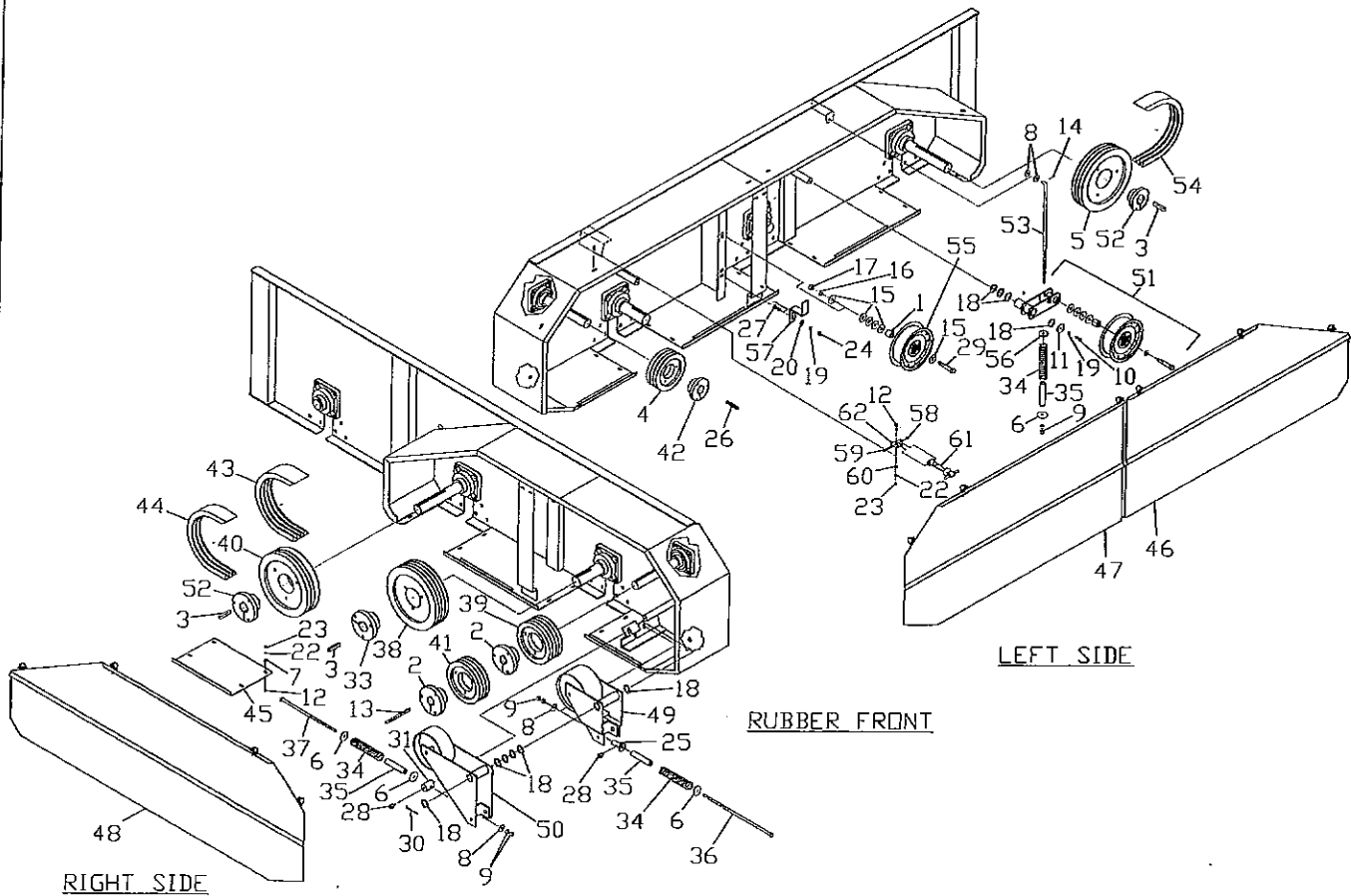
16	E728040	1	SPINDLE
17	E674023	1	SEAL, 1.50
18	044370	1	CONE, BEARING INNER
19	018850	1	CUP, BEARING INNER
20	E360040	1	HUB, 5-BOLT W/CUP-LUGS
21	018860	1	CUP, BEARING OUTER
22	012630	1	CONE, BEARING OUTER
23	E829019	1	WASHER, FLAT 7/8"
24	129830	1	NUT, HEX SLOTTED 7/8"
25	003950	1	PIN, COTTER 3/16x2
26	035420	1	CAP, HUB

27	252020	8	BOLT, HHCS 1-8x8 Gr8 ZN
28	261280	2	PLATE, STRUT MOUNTING
29	492130	2	SPACER WLDT, OFFSET AXLE
30	003350	8	WASHER, LOCK 1"x 1-21/32
31	J14H805	8	NUT, HEX 1-8 Gr5 ZN
32	I4131240	8	BOLT, 3/4x2-1/2 Gr5
33	036800	8	WASHER, LOCK 3/4"
34	J14H794	8	NUT, HEX 3/4-10 Gr5 ZN
35	020730	40	NUT, WHEEL 1/2-20

36	413650	4	TIRE AND WHEEL ASSY, LH
	241410	4	TIRE, 7.60-15 6 PLY GROUND DRIVE
	E816017	4	TUBE, M15
	413630	4	WHEEL, 15 x 6 5-BOLT

37	413640	4	TIRE AND WHEEL ASSY, RH
	241410	4	TIRE, 7.60-15 6 PLY GROUND DRIVE
	E816017	4	TUBE, M15
	413630	4	WHEEL, 15 x 6 5-BOLT

DRIVE & IDLER SHIELD-RUBBER FRONT (M380590) M253000

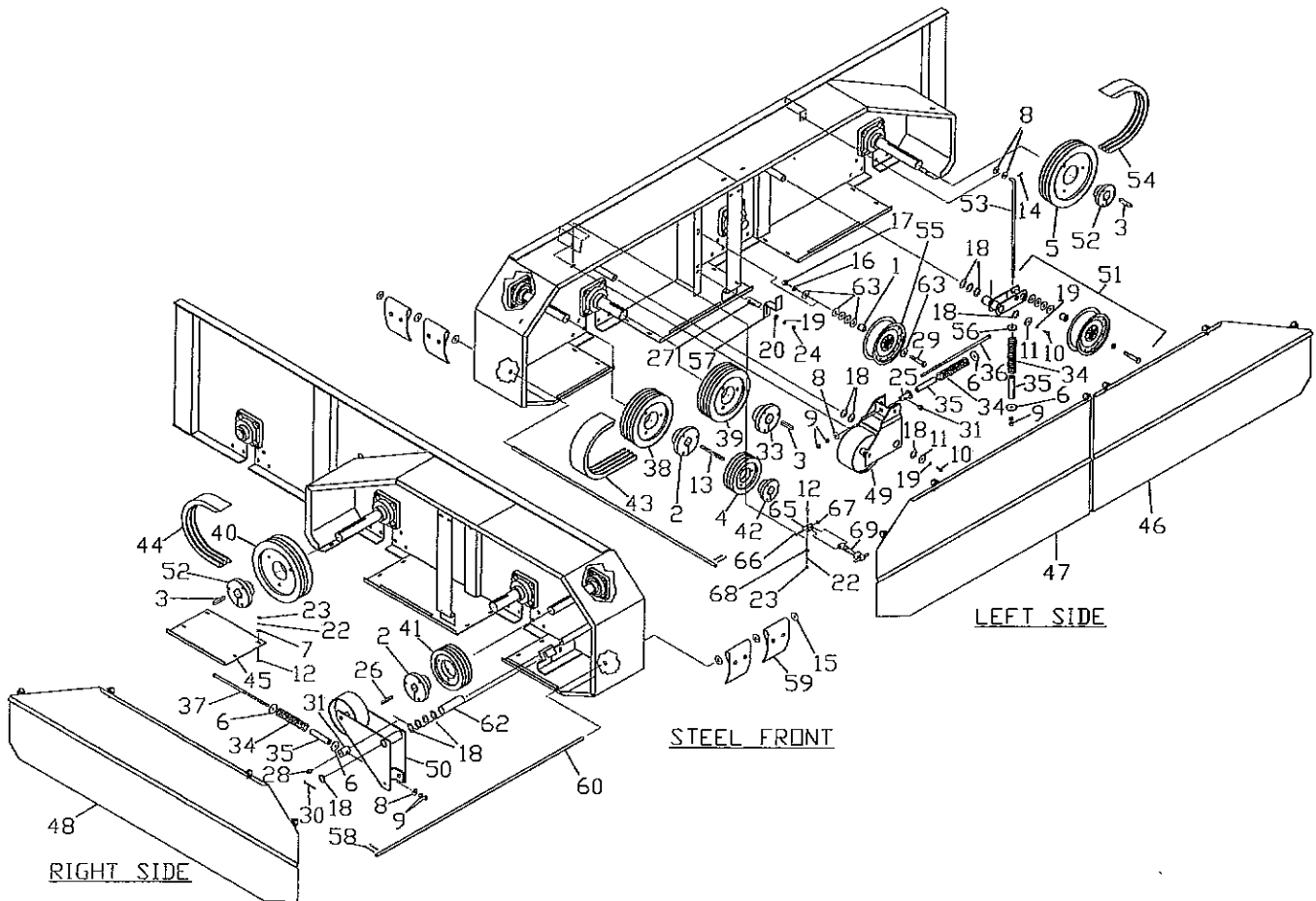


ITEM	PART NUMBER	786A QTY	638 QTY	DESCRIPTION
1	E126195	1	1	BUSHING, .688x1.25x1.12
2	E126196	2	2	BUSHING, SPLIT TAP. E 1.75
3	E388049	3	3	KEY, SQ. .50x3.0
4	E706013	-	1	SHEAVE, 3C 7.9 SF BUSHING
4	E706014	1	-	SHEAVE, 2C 7.9 SF BUSHING
5	E706102	-	1	SHEAVE, 3C 12.4 E BUSHING
5	E706112	1	-	SHEAVE, 2C 12.4 E BUSHING
6	I486801R1	4	4	WASHER, FLAT .531x2.0x.25
6	022920	20	20	WASHER, FLAT .38x.88x.083
8	005200	4	4	WASHER, FLAT .56x1.38x.109
9	005360	6	6	NUT, HEX 1/2-13 G5 ZN
10	012260	2	2	BOLT, HHCS 3/8x1.0 G5 ZN
11	012270	2	2	WASHER, FLAT, .406x1.75x.134
12	254060	30	30	BOLT, CRG. 5/16x1.0 G5 ZN
13	013690	1	1	KEY, SQ. .38x6.50
14	019070	1	1	PIN, COTTER 3/16x1.0 ZN
15	035210	6	6	WASHER, FLAT .656x1.31x.095
16	020440	1	1	WASHER, LOCK 5/8 ZN
17	I124589	1	1	NUT, HEX 5/8-11 G5 ZN
18	020880	20	20	WASHER, FLAT 1.25x1.75x.134
19	021180	4	4	WASHER, LOCK 3/8 ZN
20	021190	2	2	WASHER, FLAT .44x1.0x.083.
21	-	-	-	-
22	023620	30	30	WASHER, LOCK 5/16 ZN
23	023630	30	30	NUT, HEX 5/16-18 G5 ZN
24	027260	2	2	NUT, HEX 3/8-16 G5 ZN
25	251030	1	1	GUIDE

DRIVE & IDLER SHIELD-RUBBER FRONT (380590B)

ITEM	PART NUMBER	786A QTY	638 QTY	DESCRIPTION
26	030380	1	1	KEY, SQ. .38x3.0
27	035180	2	2	BOLT, CRG. 3/8x1.25 G5 ZN
28	115590	2	2	ZERK, 1/4-28TPR DRVTHDSTR
28	251220	2	-	BUSHING, SPLIT TAPER SF 2.00
29	056720	-	1	BOLT, HHCS 5/8x4.0 G5 ZN
29	1271729	1	-	BOLT, HHCS 5/8x3.5 G5 ZN
30	114370	1	1	PIN, COTTER 1/4x2.0
31	251020	1	1	GUIDE
32	-	-	-	-
33	225700	1	1	BUSHING, 2-3/16 SPLIT TPR
34	231000	3	3	SPRING, COMP. 1.62x7.25x.25
35	231050	3	3	SPACER, SPRING 1.0x.64x5.0
36	231060	1	1	ROD WELD, TAKE-UP 19.0
37	231070	1	1	ROD, WELD, TAKE-UP 15.0
38	234720	1	1	SHEAVE, 4C-11.4 E BUSHING
39	234730	1	1	SHEAVE, 4C-8.9 E BUSHING
40	234740	1	1	SHEAVE, 4C-13.4 E BUSHING
41	234750	1	1	SHEAVE, 3C-8.9 E BUSHING
42	234760	1	1	BUSHING, SF 1.75 SPLIT TPR.
43	234770	1	1	POWER BAND BELT, 4HC-84.2
44	234780	1	1	POWER BAND BELT, 3HC-157
45	234810	5	5	COVER, ROTOR SLOT
46	466930	1	1	SHIELD WLDT FACE LFT RR
47	466920	1	1	SHIELD WLDT, FACE LH FRT
48	466910	1	1	SHIELD WLDT, FACE RH
49	234850	1	1	IDLER ASSEMBLY, #1 ROTOR
50	234860	1	1	IDLER ASSEMBLY, #2 ROTOR
51	380630	-	1	IDLER ASSEMBLY, #3 ROTOR
51	234870	1	-	IDLER ASSEMBLY, #3 ROTOR
52	251230	2	2	BUSHING, 2.00 TYPE E
53	279520	1	1	ROD, SPRING TAKE-UP.5x23.0
54	380610	-	1	POWER BAND BELT, 3HC-230
54	234790	1	-	POWER BAND BELT, 2HC-230
55	380620	-	1	PULLEY, 8.0x3.25Wx.62 B
55	234800	1	-	PULLEY, 8.0x2.0Wx.62 B
56	268560	1	1	WASHER, FLAT 17/32 x1-3/4
57	380640	-	1	BRACKET, BELT RETAINER
57	279530	1	-	BRACKET, BELT RETAINER
58	037550	10	10	NUT, 1/4 LOCK
59	223540	10	10	BOLT, HHCS 1/4 x 1-3/4
60	1120393	10	10	WASHER, FLAT 5/16
61	205650	10	10	HOOK, RUBBER
62	466830	10	10	ANCHOR, LATCH BOLT-ON

DRIVE, IDLER & SHIELD-STL FRONT 638 & 786A (M380600)

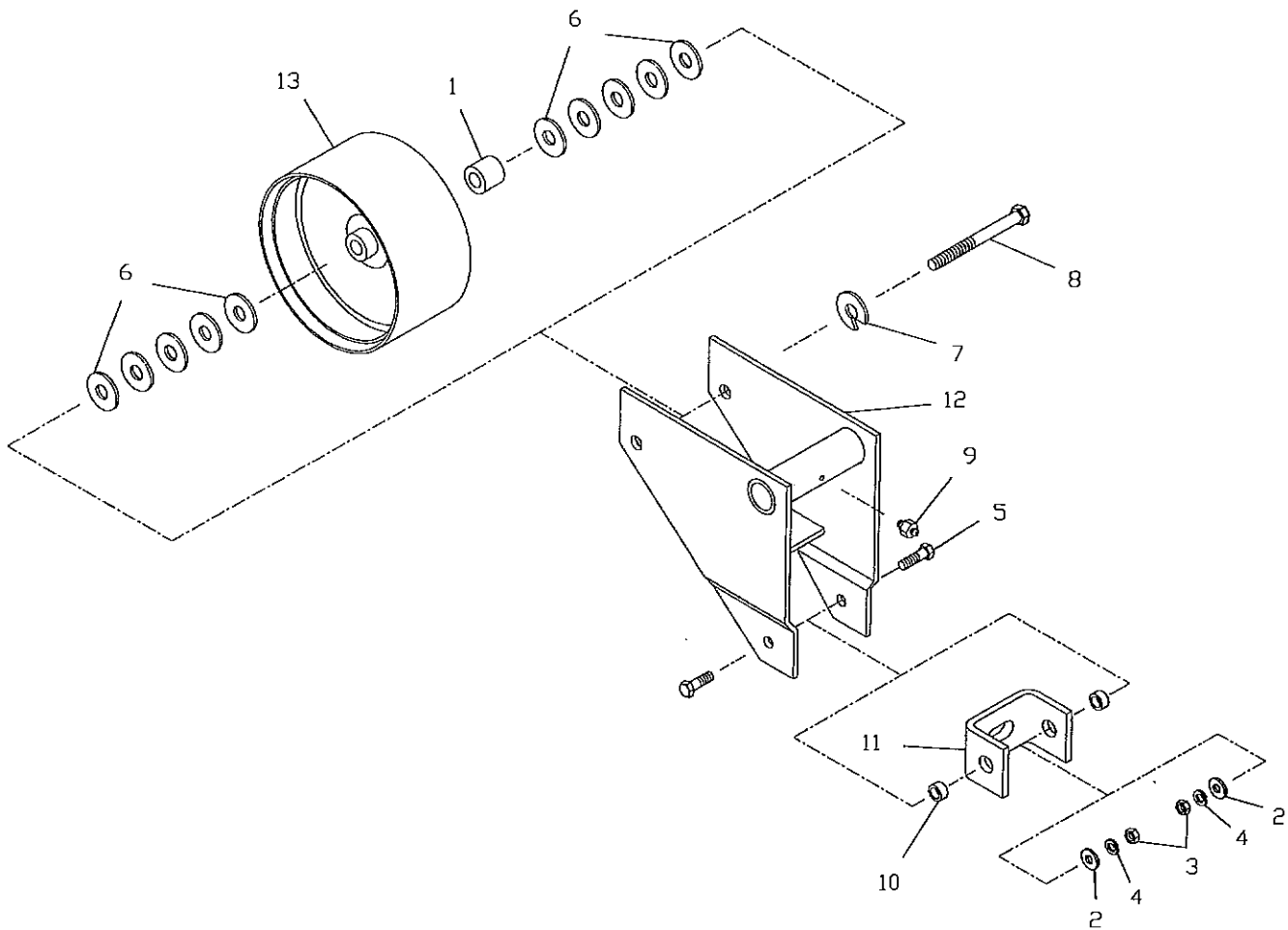


ITEM	PART NUMBER	786A QTY	630 QTY	DESCRIPTION
1	E126195	1	1	BUSHING, .688x1.25x1.12
2	E126196	2	2	BUSHING, SPLIT TAP. E 1.75
3	E388049	3	3	KEY, SQ. .50x3.0
4	E706013	-	1	SHEAVE, 3C 7.9 SF BUSHING
4	E706014	1	-	SHEAVE, 2C 7.9 SF BUSHING
5	E706102	-	1	SHEAVE, 3C 12.4 E BUSHING
5	E706112	1	-	SHEAVE, 2C 12.4 E BUSHING
6	I486801R1	4	4	WASHER, FLAT .531x2.0x.25
7	022920	20	20	WASHER, FLAT .38x.88x.083
8	005200	4	4	WASHER, FLAT .56x1.38x.109
9	005360	6	6	NUT, HEX 1/2-13 G5 ZN
10	012260	2	2	BOLT, HHCS 3/8x1.0 G5 ZN
11	012270	2	2	WASHER, FLAT, .406x1.75x.134
12	254060	30	30	BOLT, CRG. 5/16x1.0 G5 ZN
13	013690	1	1	KEY, SQ. .38x6.50
14	019070	1	1	PIN, COTTER 3/16x1.0 ZN
15	020430	19	35	WASHER, FLAT .69x1.75x.134
16	020440	1	1	WASHER, LOCK 5/8 ZN
17	I124589	1	1	NUT, HEX 5/8-11 G5 ZN
18	020880	20	20	WASHER, FLAT 1.25x1.75x.134
19	021180	4	4	WASHER, LOCK 3/8 ZN
20	021190	2	2	WASHER, FLAT .44x1.0x.083
21	-	-	-	-
22	023620	30	30	WASHER, LOCK 5/16 ZN
23	023630	30	30	NUT, HEX 5/16-18 G5 ZN
24	027260	2	2	NUT, HEX 3/8-16 G5 ZN
25	251030	1	1	GUIDE

DRIVE, IDLER & SHIELD-STL FRONT 638 & 786A (M380600)

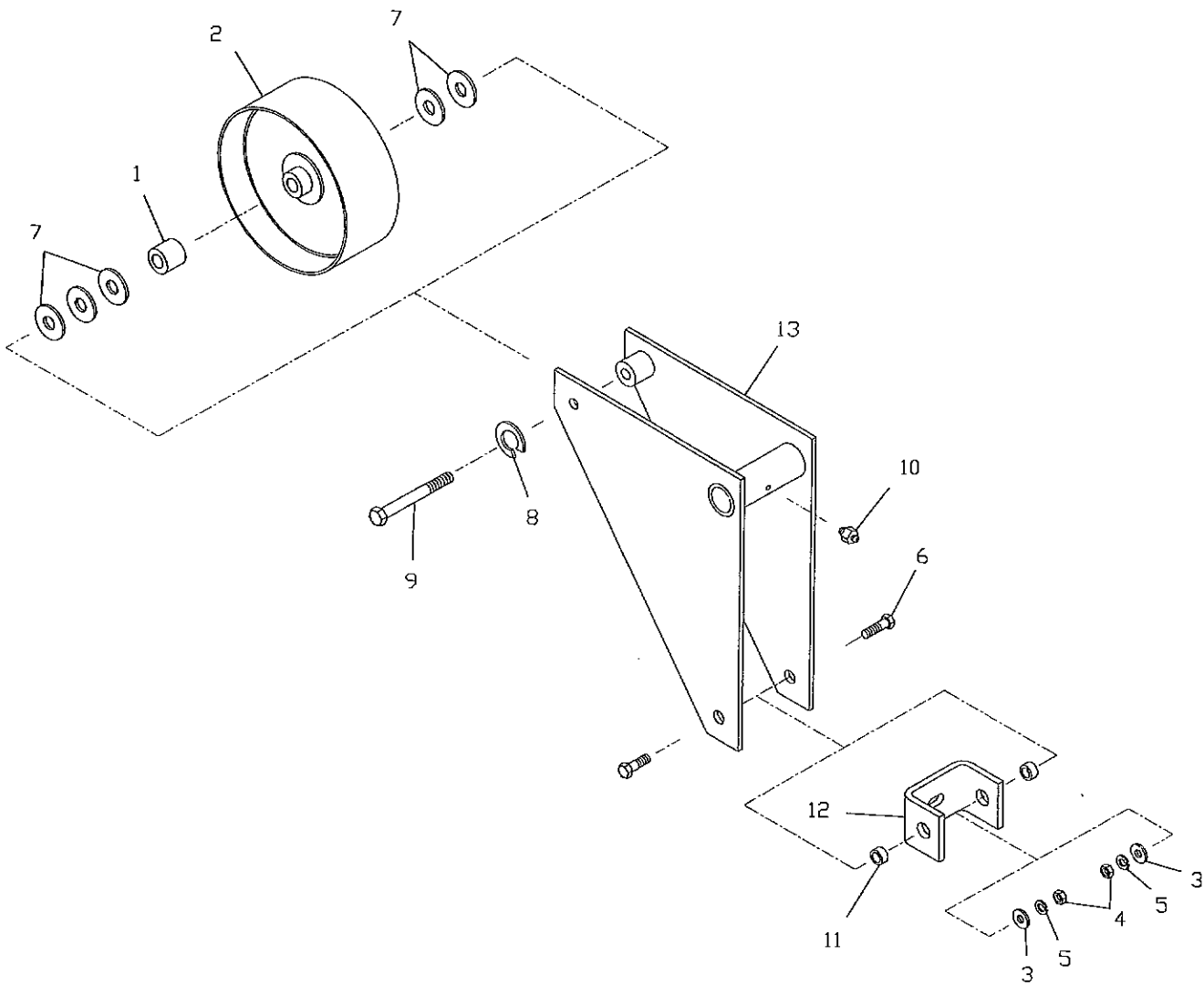
ITEM	PART NUMBER	786A QTY	630 QTY	DESCRIPTION
26	030380	1	1	KEY, SQ. .38x3.0
27	035180	2	2	BOLT, CRG. 3/8x1.25 G5 ZN
28	115590	-	2	ZERK, 1/4-28 DRV THDSTR
28	251220	1	-	BUSHING, SPLIT TAP. SF 2.00
29	056720	-	1	BOLT, HHCS 5/8x4.0 G5 ZN
29	1271729	1	-	BOLT, HHCS 5/8x3.5 G5 ZN
30	114370	1	1	PIN, COTTER 1/4x2.0
31	251020	-	1	GUIDE
31	115590	1	-	ZERK, 1/4-28 TPR DRVTHDSTR
32	-	-	-	-
33	225700	1	1	BUSHING, 2-3/16 SPLIT TPR
34	231000	3	3	SPRING, COMP. 1.62x7.25x.25
35	231050	3	3	SPACER, SPRING 1.0x.64x5.0
36	231060	1	1	ROD WELD, TAKE-UP 19.0
37	231070	1	1	ROD, WELD, TAKE-UP 15.0
38	E706057	1	-	SHEAVE, 4C-12.4 E BUSHING
39	394300	1	1	SHEAVE, 10.4
40	234740	1	1	SHEAVE, 3C-13.4 E BUSHING
41	234750	1	1	SHEAVE, 3C-8.9 E BUSHING
42	234760	1	1	BUSHING, SF 1.75 SPLIT TPR.
43	234770	1	1	POWER BAND BELT, 4HC-84.2
44	234780	1	1	POWER BAND BELT, 3HC-157
45	234810	5	5	COVER, ROTOR SLOT
46	466930	1	1	SHIELD, LEFT REAR
47	466920	1	1	SHIELD, LEFT FRONT
48	466910	1	1	SHIELD, RIGHT
49	234850	1	1	IDLER ASSEMBLY, #1 ROTOR
50	234860	1	1	IDLER ASSEMBLY, #2 ROTOR
51	380630	-	1	IDLER ASSEMBLY, #3 ROTOR
52	251230	1	2	BUSHING, 2.00 TYPE E
53	279520	1	1	ROD, SPRING TAKE-UP.5x23.0
54	380610	-	1	POWER BAND BELT, 3HC-230
54	234790	1	-	POWER BAND BELT, 2HC-230
55	380620	-	1	PULLEY, 8.0x3.25wx.62 B
55	234800	1	-	PULLEY, 8.0x2.0wx.62 B
56	268560	-	1	WASHER, FLAT 5/16-18x1 ZN
56	251020	1	-	GUIDE
57	380640	-	1	BRACKET, BELT RETAINER
57	279530	1	-	BRACKET, BELT RETAINER
58	124350	4	4	PIN, COTTER 1/8x1.50 ZN
59	183330	23	28	DEFLECTER, RUBBER CURTIAN
60	255260	-	2	ROD, 630 SKIRT
60	255260	2	-	ROD, 786 SKIRT
61	-	-	-	ROD, 784 SKIRT
62	235070	1	1	SPACER, 1.62x1.38x5.5
63	035210	5	6	WASHER, FLAT .656x1.31x.095
64	268560	1	-	WASHER, FLAT 17/32 x 1-3/4
65	466830	10	10	ANCHOR, LATCH BOLT-ON
66	223540	10	10	BOLT, HHCS 1/4 x 1-3/4
67	037550	10	10	NUT, 1/4 LOCK
68	1120393	10	10	WASHER, FLAT 5/16 SAE
69	205650	10	10	HOOK, RUBBER

IDLER ASSEMBLY #1 ROTOR - (M234850)



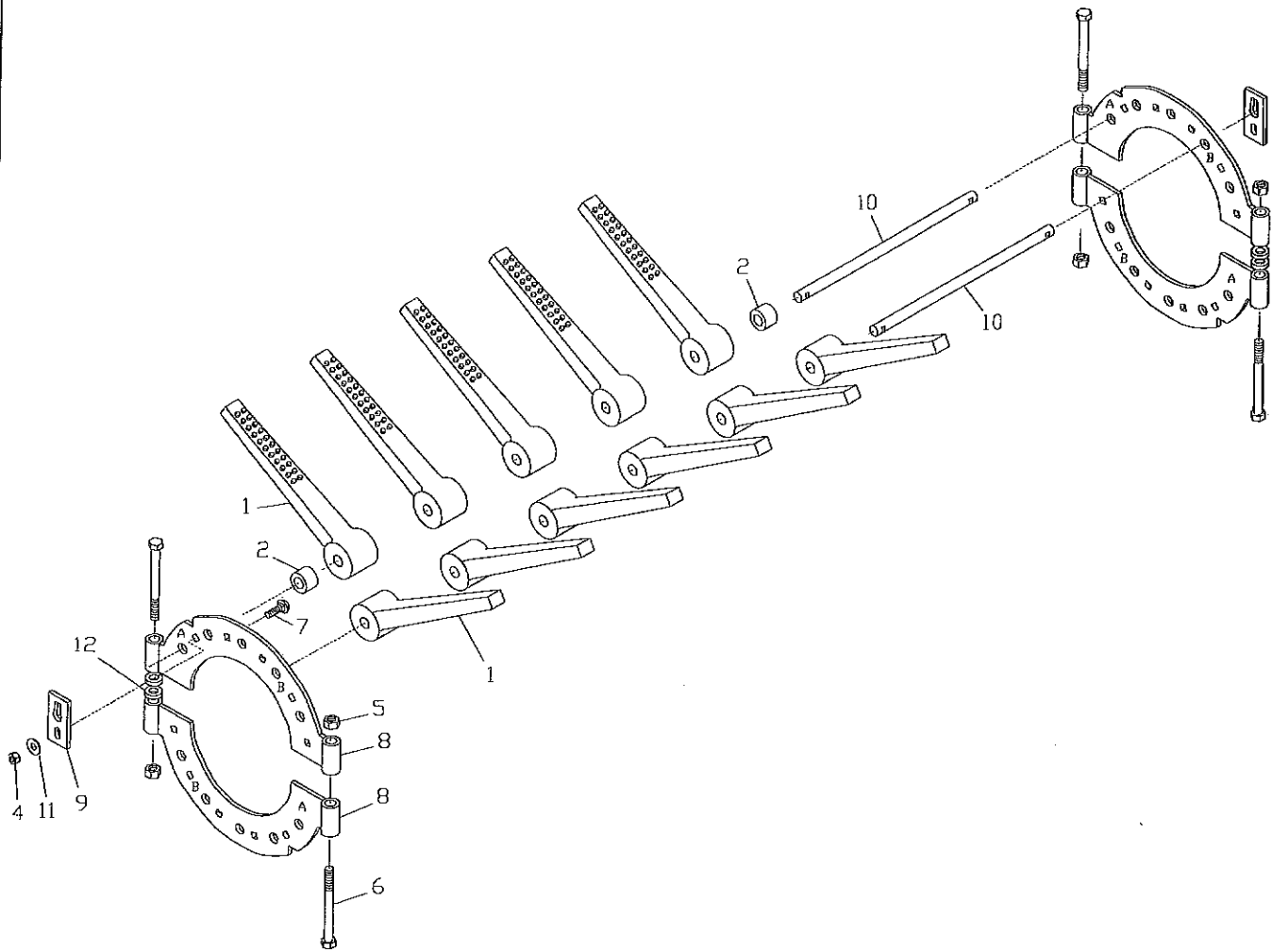
ITEM	PART NUMBER	QTY	DESCRIPTION
1	E126195	1	BUSHING, .68 I.D.x1.25 O.D.x1.12
2	005200	2	WASHER, FLAT .562x1.38x.109
3	005360	2	NUT, HEX 1/2-13 GR5
4	005370	2	WASHER, LOCK 1/2
5	010730	2	BOLT, HHCS 1/2-13x1-1/4 GR5
6	020430	10	WASHER, FLAT .68x1.75x.134
7	020440	1	WASHER, FLAT 5/8
8	031490	1	BOLT, HHCS 5/8-11x5 GR5
9	115590	1	ZERK, 1/4-28 TAPER SELF-TAP
10	231030	2	SPACER, 3/4 O.D.x.38 LONG
11	251010	1	BRACKET, SPRING PIVOT
12	234880	1	BRACKET WLDT., #1 ROTOR
13	234950	1	SHEAVE, FLAT IDLER 8.25x4.25

IDLER ASSEMBLY #2 ROTOR - (M234860)



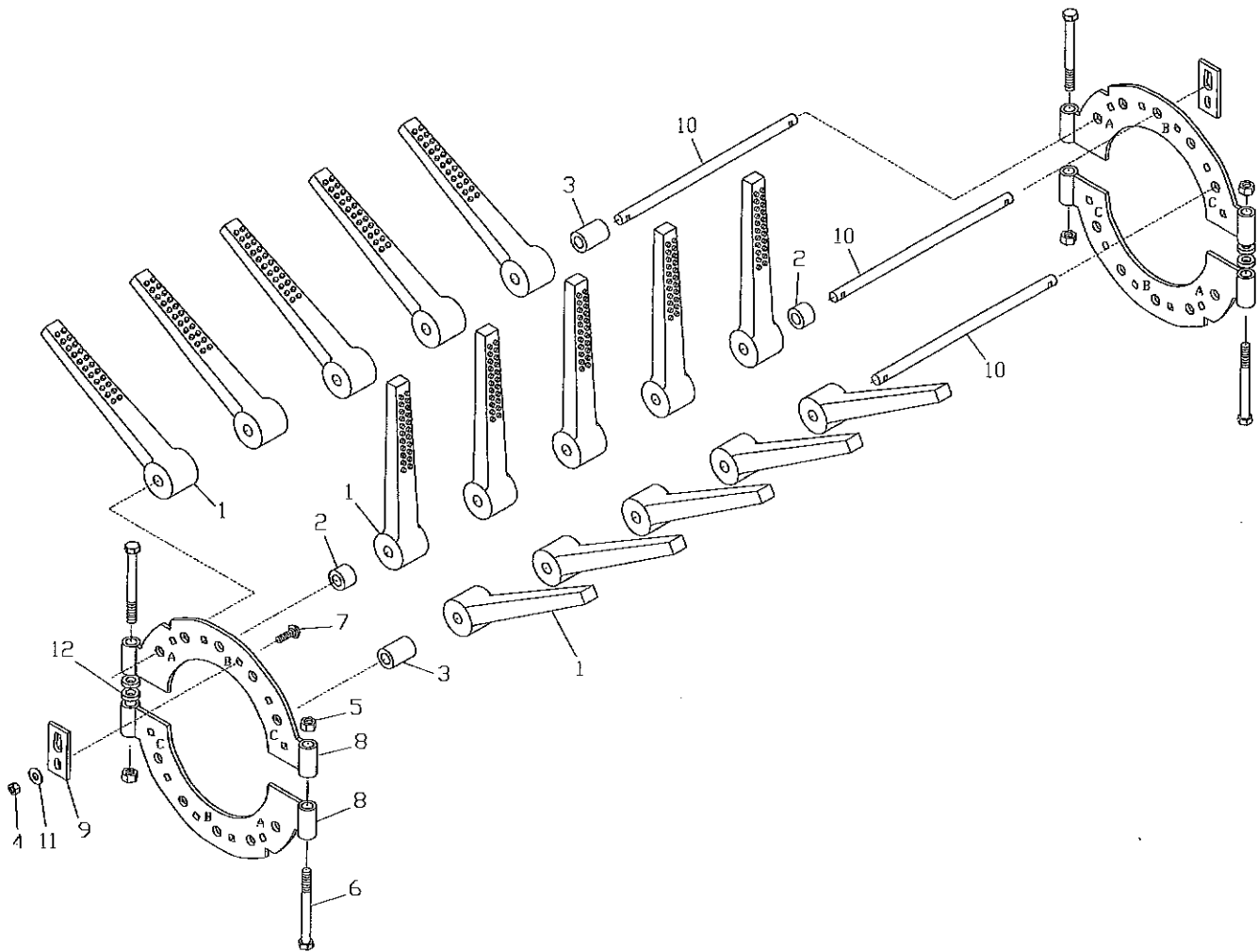
ITEM	PART NUMBER	QTY	DESCRIPTION
1	E126195	1	BUSHING, .68 I.D.x1.25 O.D.x1.12
2	E706098	1	SHEAVE 8 O.D. .62 BORE IDLER
3	005200	2	WASHER, FLAT .562x1.38x.109
4	005360	2	NUT, HEX 1/2-13 GR5
5	005370	2	WASHER, LOCK 1/2
6	010730	2	OLT, HHCS 1/2-13x1-1/4 GR5
7	020430	5	WASHER, FLAT .68x1.75x.134
8	020440	1	WASHER, FLAT 5/8
9	056720	1	BOLT, HHCS 5/8-11x4 GR5
10	115590	1	ZERK, 1/4-28 TAPER SELF-TAP
11	231030	2	SPACER, .75 O.D.x.38 LONG
12	231040	1	BRACKET, SPRING PIVOT
13	234970	1	ARM WLDT., #2 ROTOR

RUBBER FLAIL CLUSTER ASSEMBLY (12" WIDE, 4 PIN) - (M394240)



ITEM	PART NUMBER	QTY	DESCRIPTION
1	E278029	22	FLAIL, RUBBER
2	E724311	4	SPACER, RUBBER .88"
3	-	-	-
4	I9411655	8	NUT, TOP-LK 3/8 G5 ZN
5	I9413967	4	NUT, HEX-LK 1/2 G5 ZN
6	160350	4	BOLT, HHCS 1/2x5.0 G5 ZN
7	170530	8	BOLT, CRG 3/8x1.0 G5 ZN
8	394210	4	BRACKET WELD, 5/8 PIN
9	383000	8	STRAP, PIN CLUSTER
10	383010	4	PIN, FLAIL 5/8" 12"
11	021190	8	WASHER, FLAT .44x1.00x.083
12	469370	4	WASHER, DEFOLIATOR ROTOR

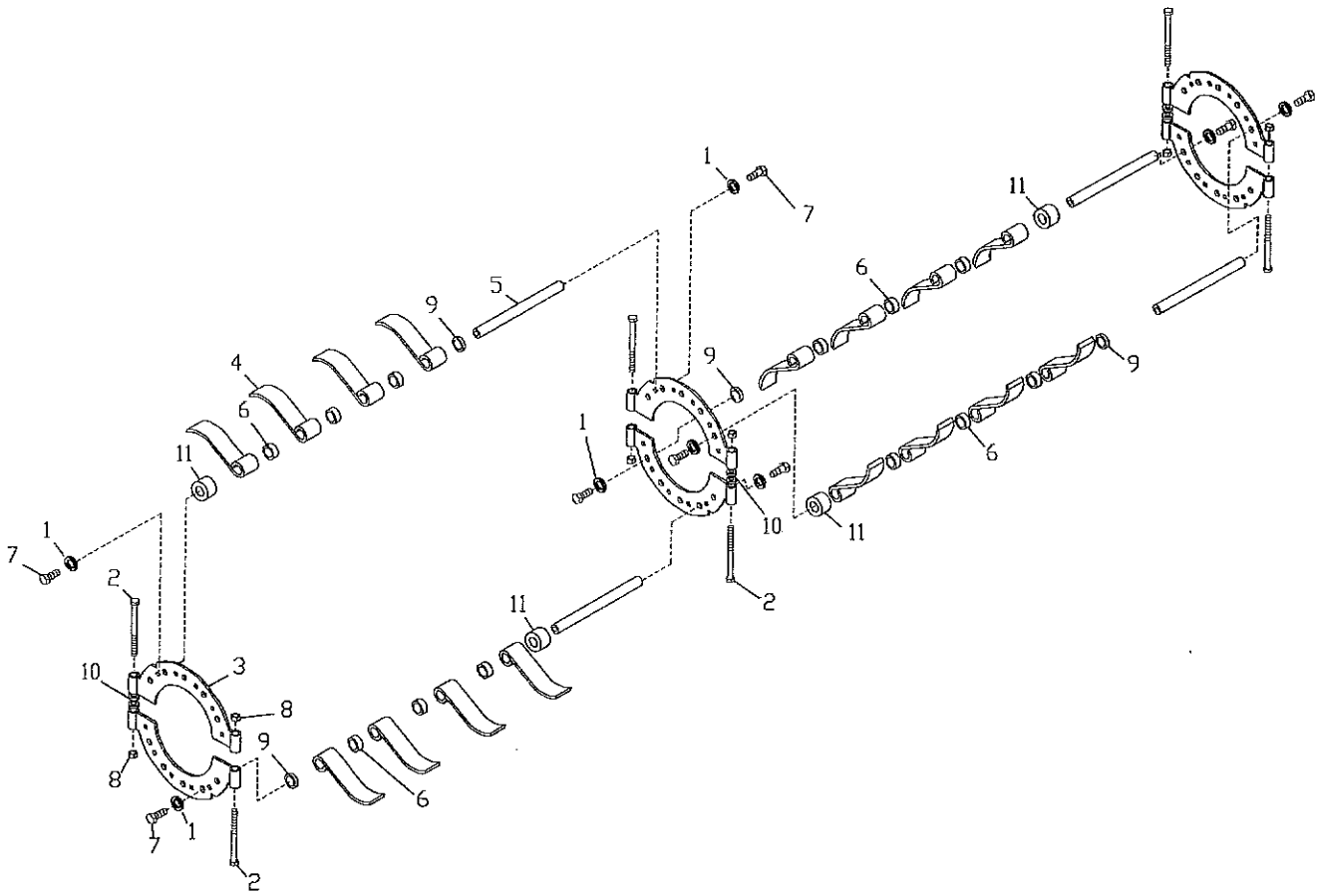
RUBBER FLAIL CLUSTER ASSEMBLY (12" WIDE, 6 PIN) - (M394230)



ITEM	PART NUMBER	QTY	DESCRIPTION
1	E278029	30	FLAIL, RUBBER
2	E724311	4	SPACER, RUBBER .88"
3	E724312	4	SPACER, RUBBER 1.75
4	I9411655	12	NUT, TOP-LK 3/8 G5 ZN
5	I9413967	4	NUT, HEX-LK 1/2 G5 ZN
6	160350	4	BOLT, HHCS 1/2x5.0 G5 ZN
7	170530	12	BOLT, CRG 3/8x1.0 G5 ZN
8	394210	4	BRACKET WELD, 5/8 PIN
9	383000	12	STRAP, PIN CLUSTER
10	383010	6	PIN, FLAIL 5/8" 12"
11	021190	12	WASHER, FLAT .44x1.00x.083
12	469370	4	WASHER, DEFOLIATOR ROTOR

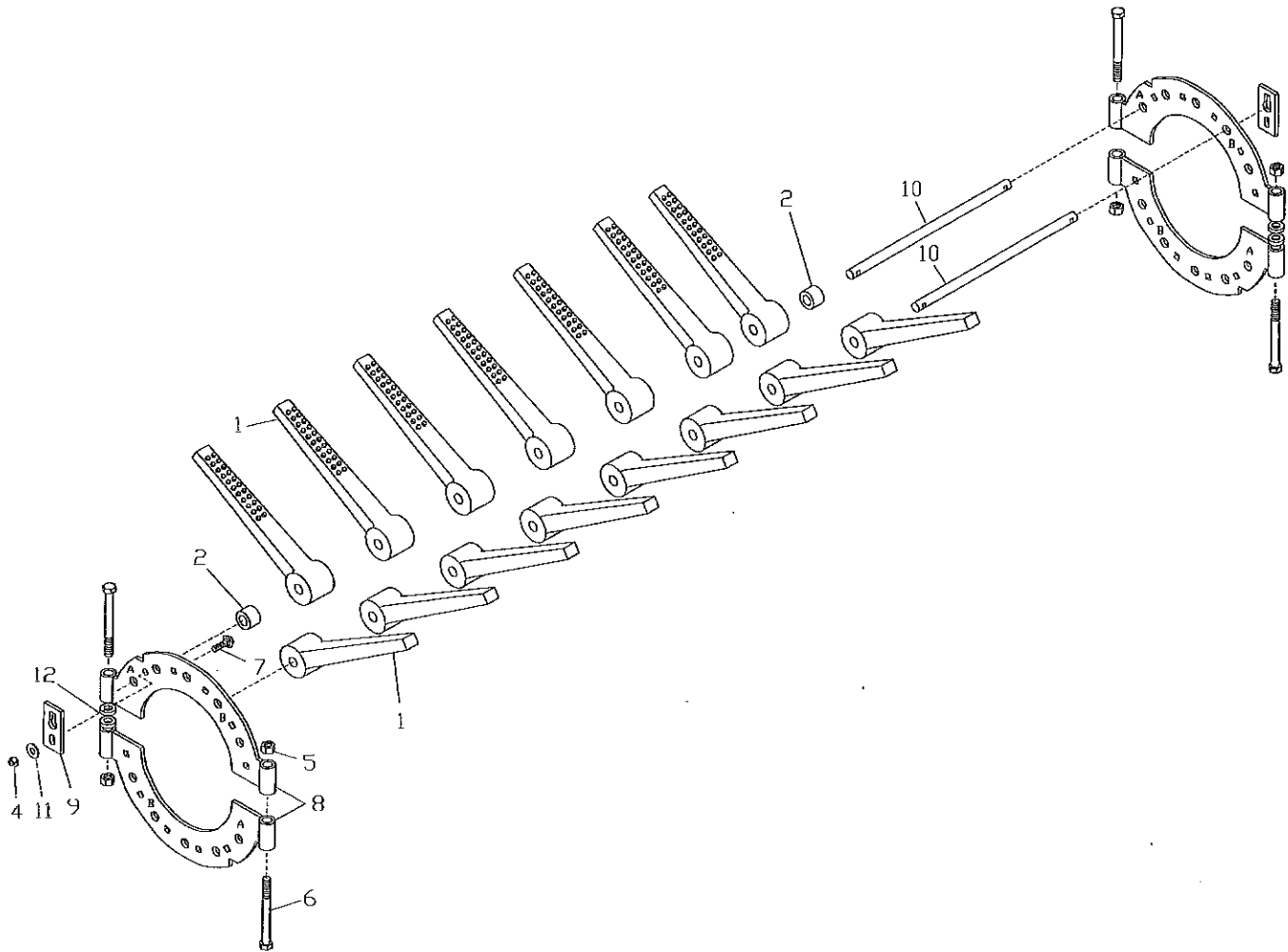
2 ROW STEEL FLAIL CLUSTER ASSEMBLY-638 (M438750)

438740 - 786A



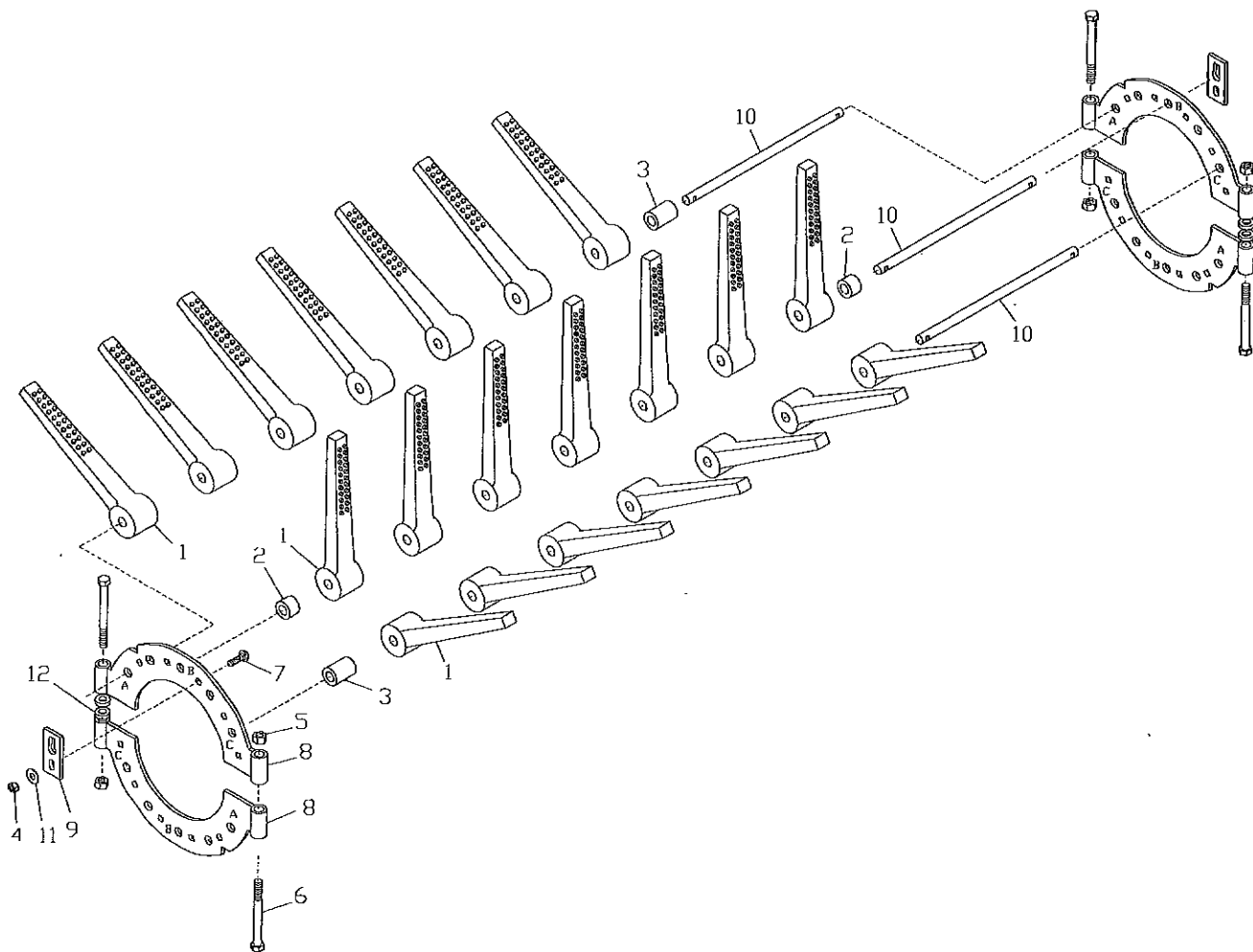
ITEM	PART NUMBER	QTY 786A	QTY 638	DESCRIPTION
1	020440	44	56	WASHER, LOCK 5/8
2	160350	24	30	BOLT, HHCS 1/2-13x5.0 GR5 ZN
3	394210	24	30	BRACKET W/LDT, FLAIL 5/8" PIN
4	411150	88	112	KNIFE, DEFOLIATOR .312x2.0x8.0
5	394280	22	28	PIN, RND 1"x11.5
6	394290	66	84	SPACER, 1.50x1.06x.625
7	990600	44	56	BOLT, HHCS 5/8-11x1.25 GR5 ZN
8	19413967	24	30	NUT, LOCK 1/2-13 GRB CAD
9	R41660	22	28	SPACER 1.5 O.D. X 1.06 I.D. X .25
10	469370	24	30	WASHER, DEFOLIATOR ROTOR
11	278970	22	28	SPACER 1.5 O.D. X 1.06 I.D. X 1.0

RUBBER FLAIL ASSEMBLY, (16" RUBBER FLAIL, 4-PIN) - (M394260)



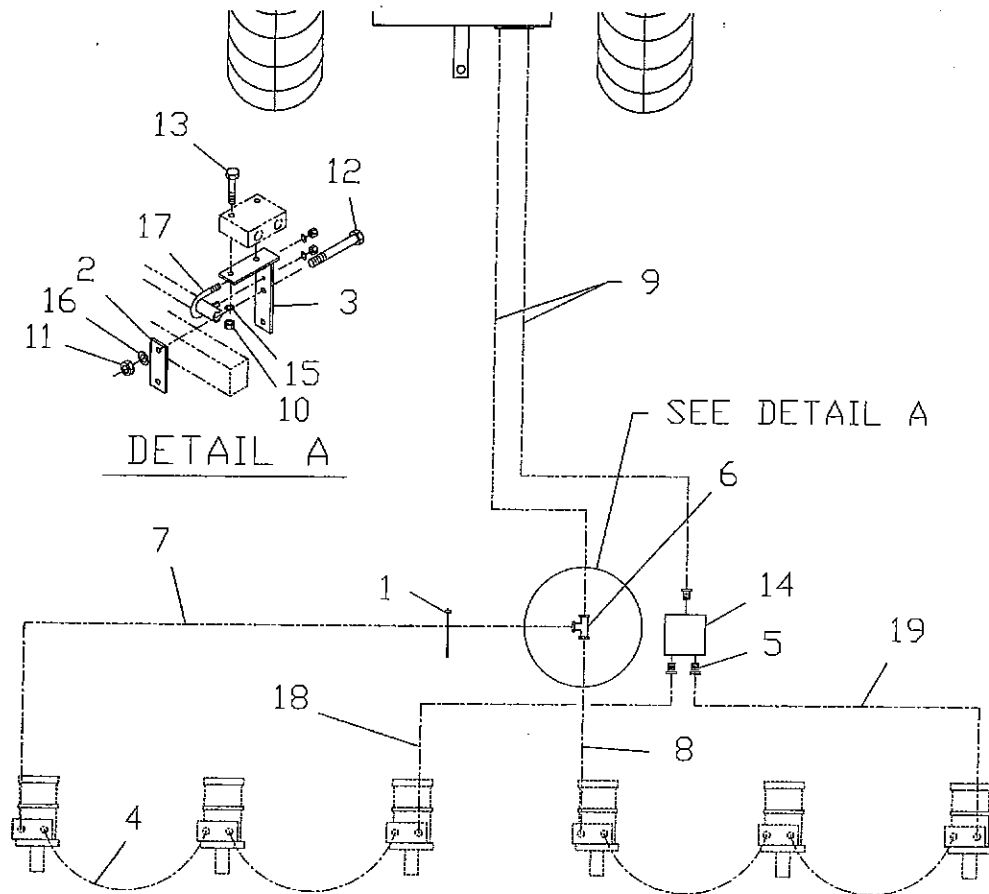
ITEM	PART NUMBER	QTY	DESCRIPTION
1	E278029	30	FLAIL, RUBBER
2	E724311	4	SPACER, RUBBER .88 LONG
3	-	-	-
4	I9411655	8	NUT, TOP-LK 3/8 G5 ZN
5	I9413967	4	NUT, HEX-LK 1/2 G5 ZN
6	160350	4	BOLT, HHCS 1/2x5.0 G5 ZN
7	170530	8	BOLT, CRG 3/8x1.0 G5 ZN
8	394210	4	BRACKET WELD, 5/8 PIN
9	383000	8	STRAP, PIN CLUSTER
10	383020	4	PIN, FLAIL 5/8" 16"
11	021190	8	WASHER, FLAT .44x1.00x.083
12	469370	4	WASHER, DEFOLIATOR ROTOR

RUBBER FLAIL CLUSTER ASSEMBLY, (16" RUBBER FLAIL, 6-PIN) - (M394250)



ITEM	PART NUMBER	QTY	DESCRIPTION
1	E278029	42	FLAIL, RUBBER
2	E724311	4	SPACER, RUBBER .88"
3	E724312	4	SPACER, RUBBER 1.75
4	I9411655	12	NUT, TOP-LK 3/8 G5 ZN
5	I9413967	4	NUT, HEX-LK 1/2 G5 ZN
6	160350	4	BOLT, HHCS 1/2x5.0 G5 ZN
7	170530	12	BOLT, CRG 3/8x1.0 G5 ZN
8	394210	4	BRACKET WELD, 5/8 PIN
9	383000	12	STRAP, PIN CLUSTER
10	383020	6	PIN, FLAIL 5/8" 16"
11	021190	12	WASHER, FLAT .44x1.00x.083
12	469370	4	WASHER, DEFOLIATOR ROTOR

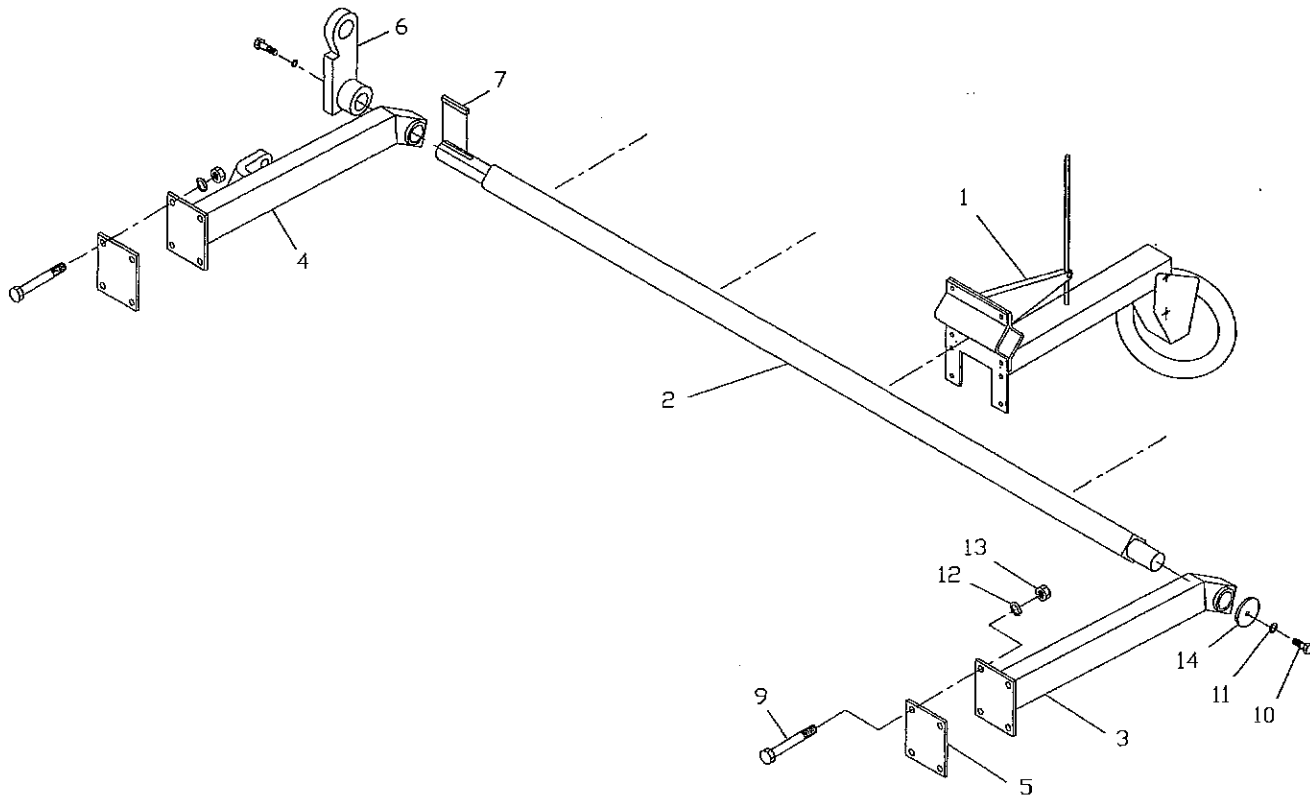
HYDRAULIC SCALPER PLUMBING



Item	Part Number	784A Qty.	786A Qty.	630 Qty.	Description
1	149670	8	8	8	Tie, Nylon Cable
2	E174207	1	1	1	Plate, Clamp
3	E174208	1	1	1	Weldment, Clamp
4	E356090	2	4	4	Hose, Hydraulic 1/2" x 42"
5	007420	4	4	4	Bushing, 3/4" x 1/2" NPT
6	006320	1	1	1	Tee, 1/2" NPT
7	E356012	-	-	1	Hose, Hydraulic 1/2" x 144"
7	164560	1	1	-	Hose, Hydraulic 1/2" x 120"
8	256090	1	1	1	Hose, Hydraulic 1/2" x 84"
9	046090	2	2	2	Hose, Hydraulic 1/2" x 240"
10	027660	-	-	-	Nut, Hex 1/4"
11	005360	-	-	-	Nut, Hex 1/2"
12	030420	-	-	-	Bolt, HHCS 1/2" x 4-1/2"
13	031560	-	-	-	Bolt, HHCS 1/4" x 2-1/2"
14	E826039	1	1	1	Valve, Flow Divider
15	029440	-	-	-	Washer, Lock 1/4"
16	005370	-	-	-	Washer, Lock 1/2"
17	E840018	-	-	-	Bolt, U .312"W
18	256090	1	1	-	Hose, Hydraulic 1/2" x 84"
18	E356015	-	-	1	Hose, Hydraulic 1/2" x 96"
19	E356090	1	-	-	Hose, Hydraulic 1/2" x 42"
19	256090	-	1	-	Hose, Hydraulic 1/2" x 84"
19	E356015	-	-	1	Hose, Hydraulic 1/2" x 96"

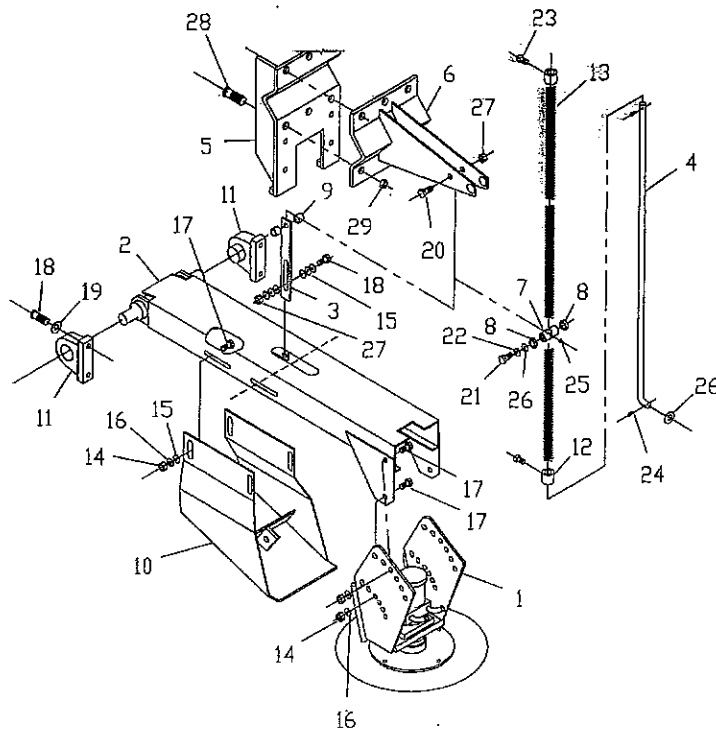
SCALPER ATTACHMENT, 4 ROW HYDRAULIC

254050 - 784A



Item	Part Number	Qty.	Description
1	255580	4	Assembly, Scalper Head
2	256100	1	Weldment, Lift Bar
3	235920	1	Weldment, Support Left Hand
4	240190	1	Weldment, Support Right Hand
5	E590154	2	Plate, Clamp
6	240200	1	Weldment, Arm
7	240420	-	Key, Square 5/8" x 2-1/4"
8	-	-	-
9	242600	-	Bolt, HHCS 5/8" x 7-1/2"
10	031080	-	Bolt, HHCS 1/2" x 1"
11	005370	-	Washer, Lock 1/2"
12	020440	-	Washer, Lock 5/8"
13	I124589	-	Nut, Hex 5/8"
14	E829107	-	Washer, Special

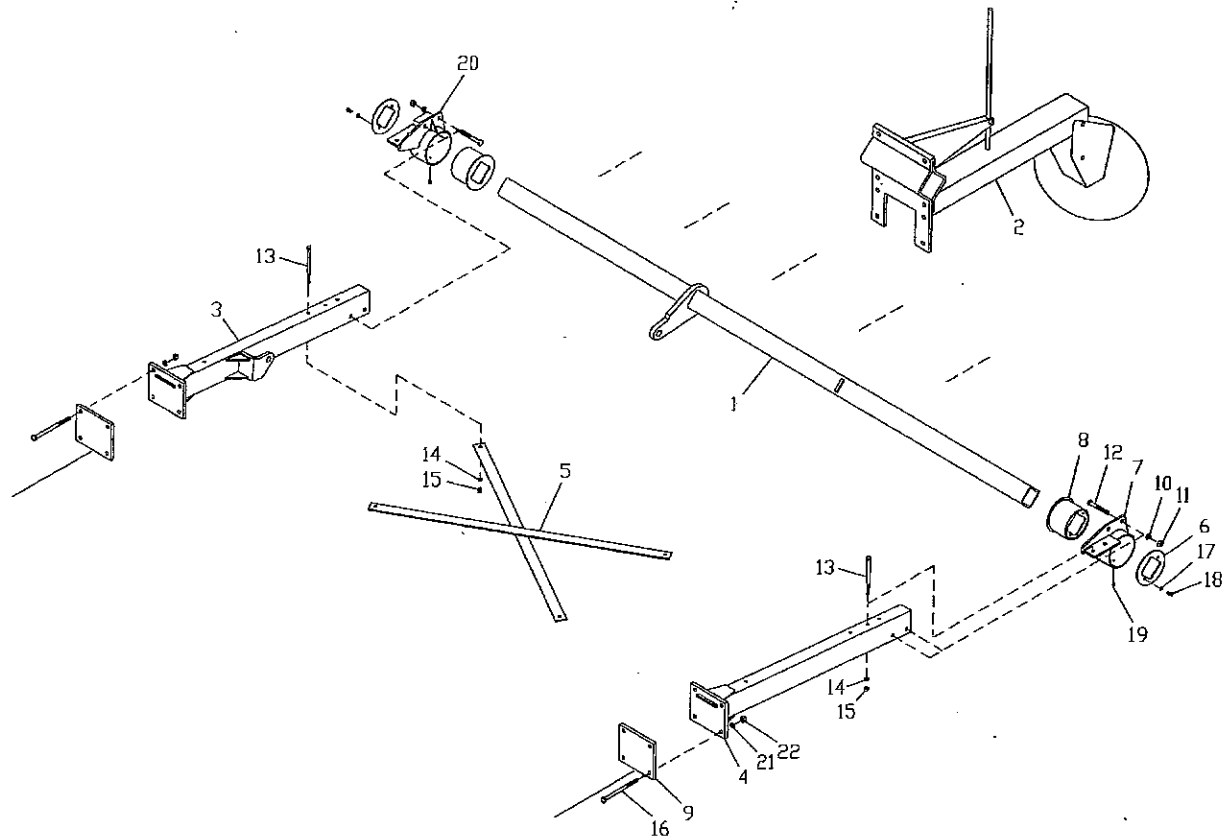
SCALPER ASSEMBLY, HYDRAULIC - 255580



Item	Part Number	Qty.	Description
1	255530	1	Assembly, Motor and Bracket
2	255590	1	Weldment, Scalper Arm
3	255660	1	Link, Limiting
4	255670	1	Rod, Spring
5	255680	1	Weldment, Clamp
6	256160	1	Weldment, Lift Arm
7	255690	1	Swivel
8	255700	2	Bushing
9	255710	2	Spacer
10	256150	1	Weldment, Shoe
11	035090	2	Bearing, PB, CI Housing w/Lock Collar 1-1/4"
12	E184004	2	Collar, Slide
13	E738013	3	Spring
14	I25526R1	8	Nut, Hex 1/2"-13
15	I120396	10	Washer, Flat 1/2"
16	005370	9	Washer, Lock 1/2"
17	010730	8	Bolt, HHCS 1/2" x 1-1/4"
18	023950	5	Bolt, HHCS 1/2" x 2"
19	005200	4	Washer, Flat 1/2"
20	990840	1	Bolt, HHCS 1/2" x 3"
21	E672055	2	Bolt, HHCS 5/8" x 1"
22	020440	2	Washer, Lock 5/8"
23	E672158	2	Screw, Square H SS 1/2"-13 x 5/8"
24	026630	2	Pin, Cotter .16" x .15"
25	049180	1	Zerk, Grease 1/4"-28
26	020430	2	Washer, Flat .62" x .134"
27	127890	2	Nut, Lock 1/2"-13
28	990540	6	Bolt, HHCS 3/4" x 2"
29	991040	6	Nut, Lock 3/4"

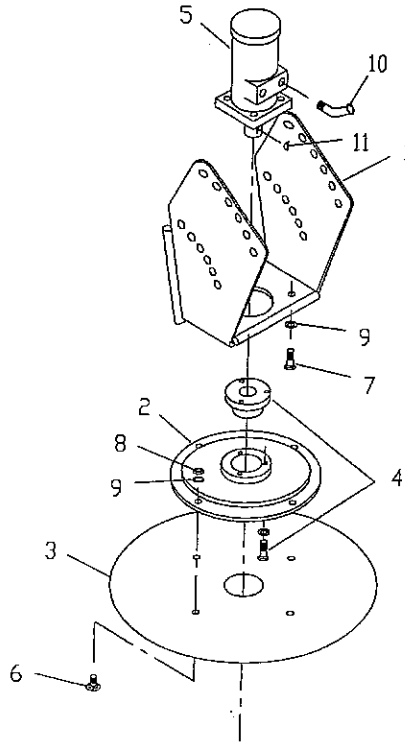
SCALPER ATTACHMENT, 6 ROW HYDRAULIC

254040 - 786A, 258700 - 630



Item	Part Number	Qty.	Description
1	258680	1	Weldment, Lift Bar 786A
1	255910	1	Weldment, Lift Bar 630
2	255580	6	Assembly, Scalper Head
3	279570	1	Weldment, Arm Right Hand
4	279580	1	Weldment, Arm Left Hand
5	256040	2	Strap, Cross 786A
5	258660	2	Strap, Cross 630
6	255950	2	Plate, Outer
7	386340	2	Weldment, Bracket Left Hand
8	256000	2	Weldment, Pivot
9	255840	2	Plate, Clamp
10	020440	4	Washer, Lock 5/8"
11	1124589	4	Nut, Hex 5/8"
12	028330	4	Bolt, HHCS 5/8" x 4-1/2"
13	018310	8	Bolt, HHCS 1/2" x 6"
14	005370	8	Washer, Lock 1/2"
15	005360	8	Nut, Hex 1/2"
16	252020	8	Bolt, HHCS 1"-8 x 8"
17	021180	4	Washer, Lock 3/8"
18	012260	4	Bolt, HHCS 3/8" x 1"
19	115590	2	Zerk, Tapered Drive 1/4"-28
20	386350	1	Weldment, Bracket Right Hand
21	003350	8	Washer, Lock 1"
22	J14H805	8	Nut, Hex 1"-8

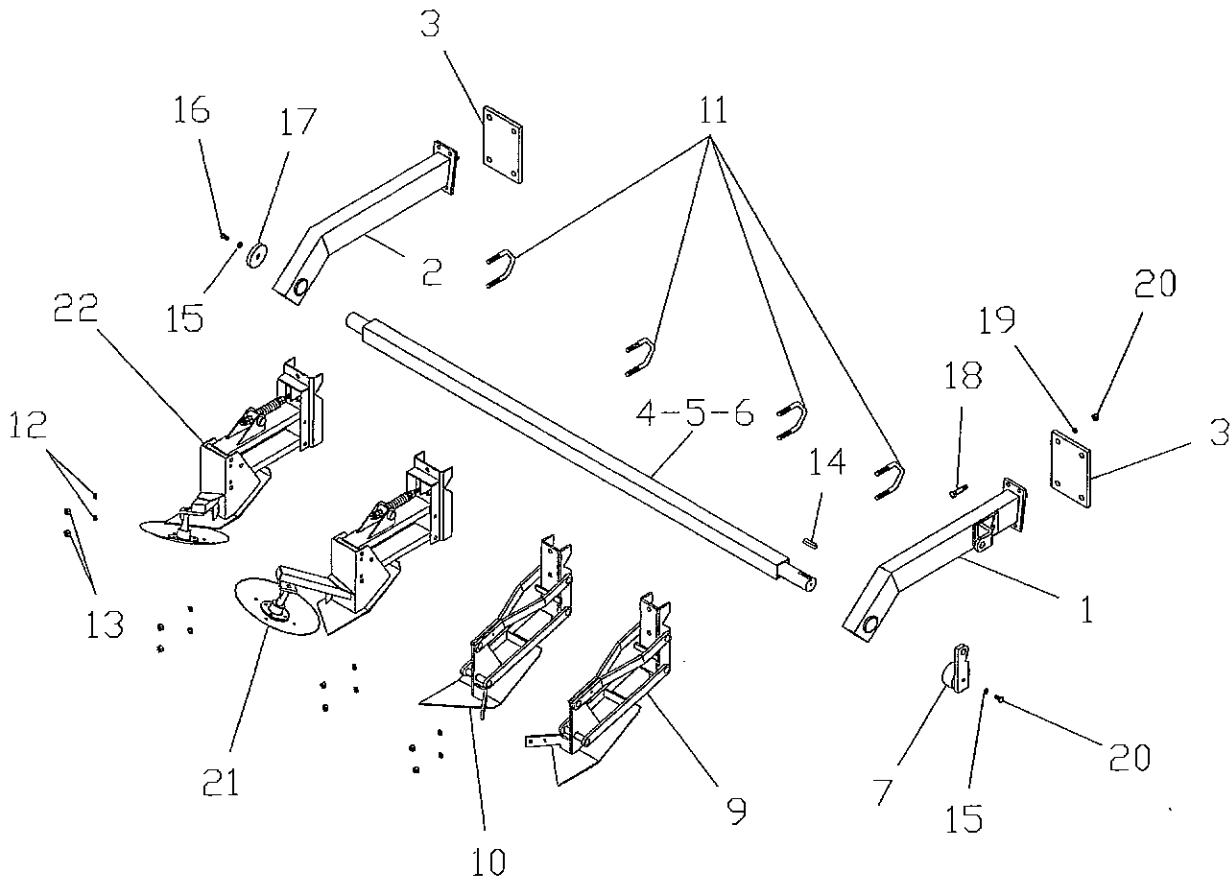
HEAD ASSEMBLY, HYDRAULIC SCALPER - 255530



Item	Part Number	Qty.	Description
1	255540	1	Weldment, Motor Mounting Bracket
2	255510	1	Hub, Disc
3	E232011	1	Disc
4	E126079	1	Bushing, Q.D.
5	E540034	1	Motor, Hydraulic
6	032840	4	Bolt, Carriage 3/8" x 3/4"
7	012260	4	Bolt, HHCS 3/8" x 1"
8	027260	4	Nut, Hex 3/8"
9	021180	8	Washer, Lock 3/8"
10	006490	2	Elbow, 1/2" NPTF x 45° ST
11	006180	1	Key, Woodruff 1/4" x 1"

SCALPER ATTACHMENT, MECHANICAL

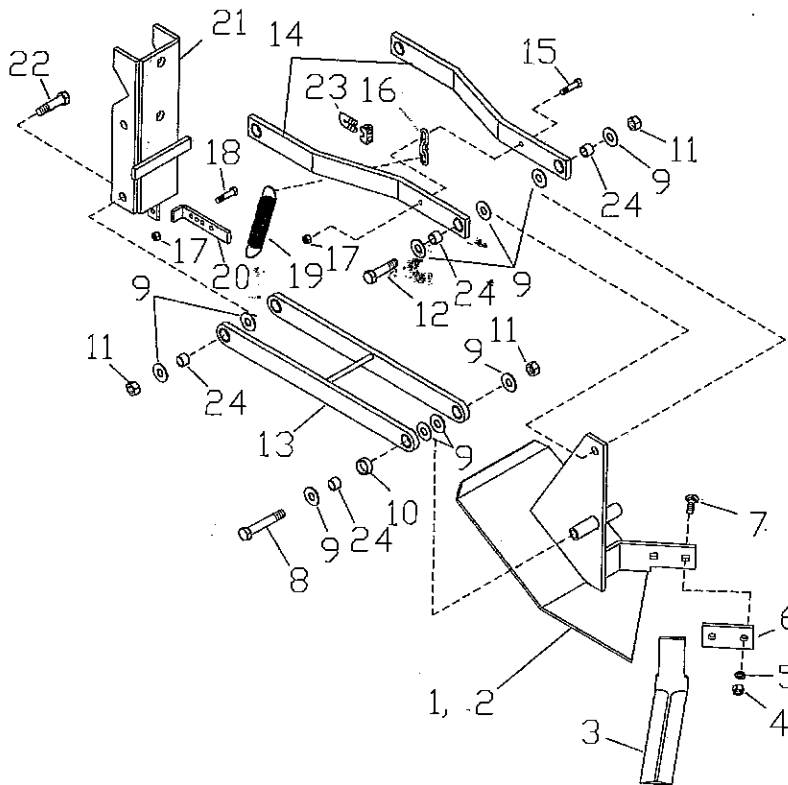
KNIFE AND DISC VERSION



Item	Part Number	784A Qty.	786A Qty.	630-6 Qty.	630-8 Qty.	Description
1	240190	1	1	1	1	Weldment, Scalper Support Right Hand
2	235920	1	1	1	1	Weldment, Scalper Support Left Hand
3	E590154	2	2	2	2	Plate, Clamp
4	241970	1	-	-	-	Weldment, Scalper Bar 784A
5	240300	-	1	-	-	Weldment, Scalper Bar 786A
6	255190	-	-	1	1	Weldment, Scalper Bar 630
7	240200	1	1	1	1	Weldment, Scalper Lift Arm
8	1770500	1	1	1	1	Bolt, HHCS 1/2" x 1-3/4"
9	E663016	2	3	3	4	Assembly, Scalper Right Hand Knife
10	E663015	2	3	3	4	Assembly, Scalper Left Hand Knife
11	E840001	4	6	6	8	Bolt, U 3/4"-10 x 6-1/8" x 4-1/4"
12	036800	8	12	12	16	Washer, Lock 3/4"
13	036750	8	12	12	16	Nut, Hex 3/4"-10
14	240420	1	1	1	1	Key, Square 5/8" x 2-1/4"
15	005370	2	2	2	2	Washer, Lock 1/2"
16	031080	1	1	1	1	Bolt, HHCS 1/2" x 1"
17	E829107	1	1	1	1	Washer, Special
18	E672446	8	8	8	8	Bolt, HHCS 5/8" x 7"
19	020440	8	8	8	8	Washer, Lock 5/8"
20	I124589	8	8	8	8	Nut, Hex 5/8"
21	439420	2	3	3	4	Assembly, Scalper Right Hand Disc
22	439410	2	3	3	4	Assembly, Scalper Left Hand Disc

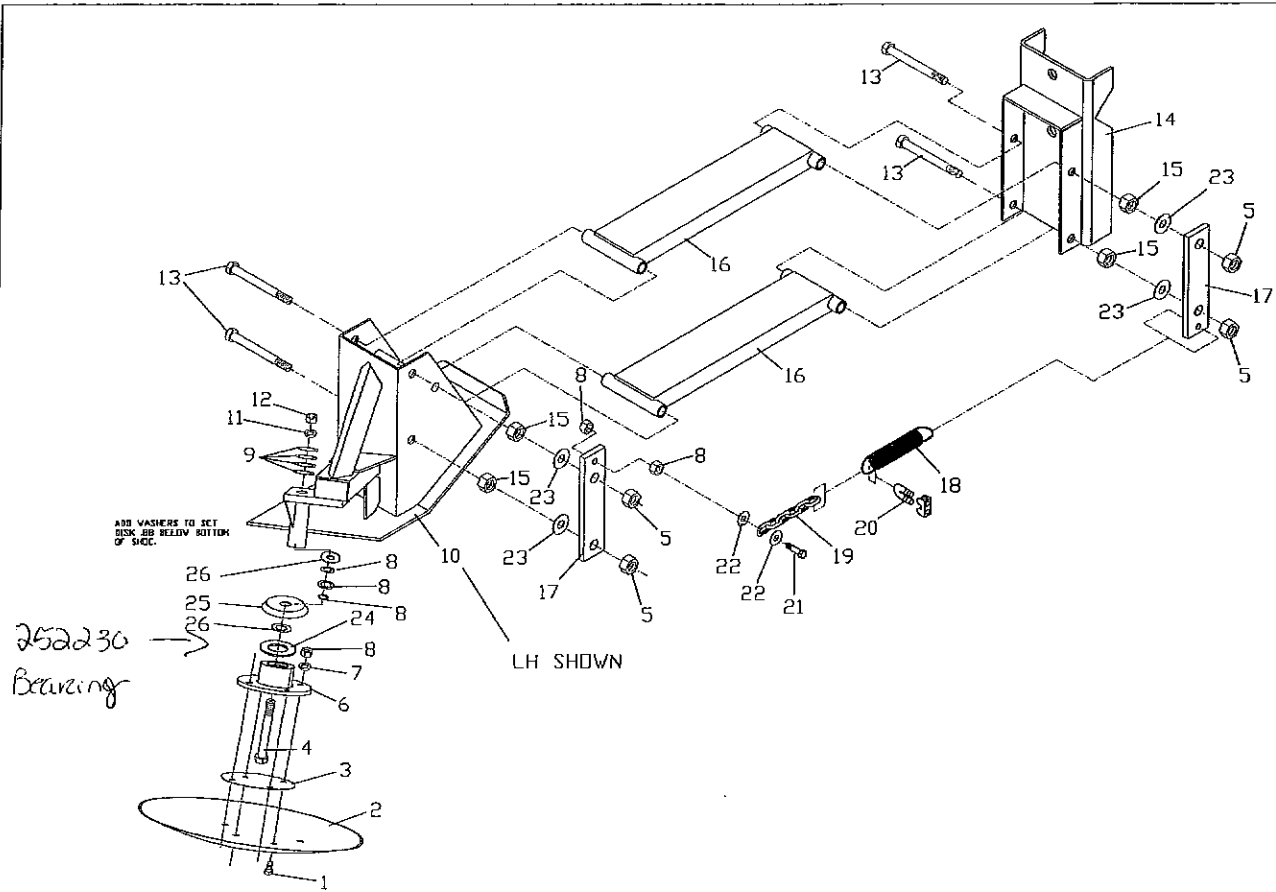
KNIFE SCALPER ASSEMBLY, MECHANICAL

663015 - LEFT HAND, 663016 - RIGHT HAND



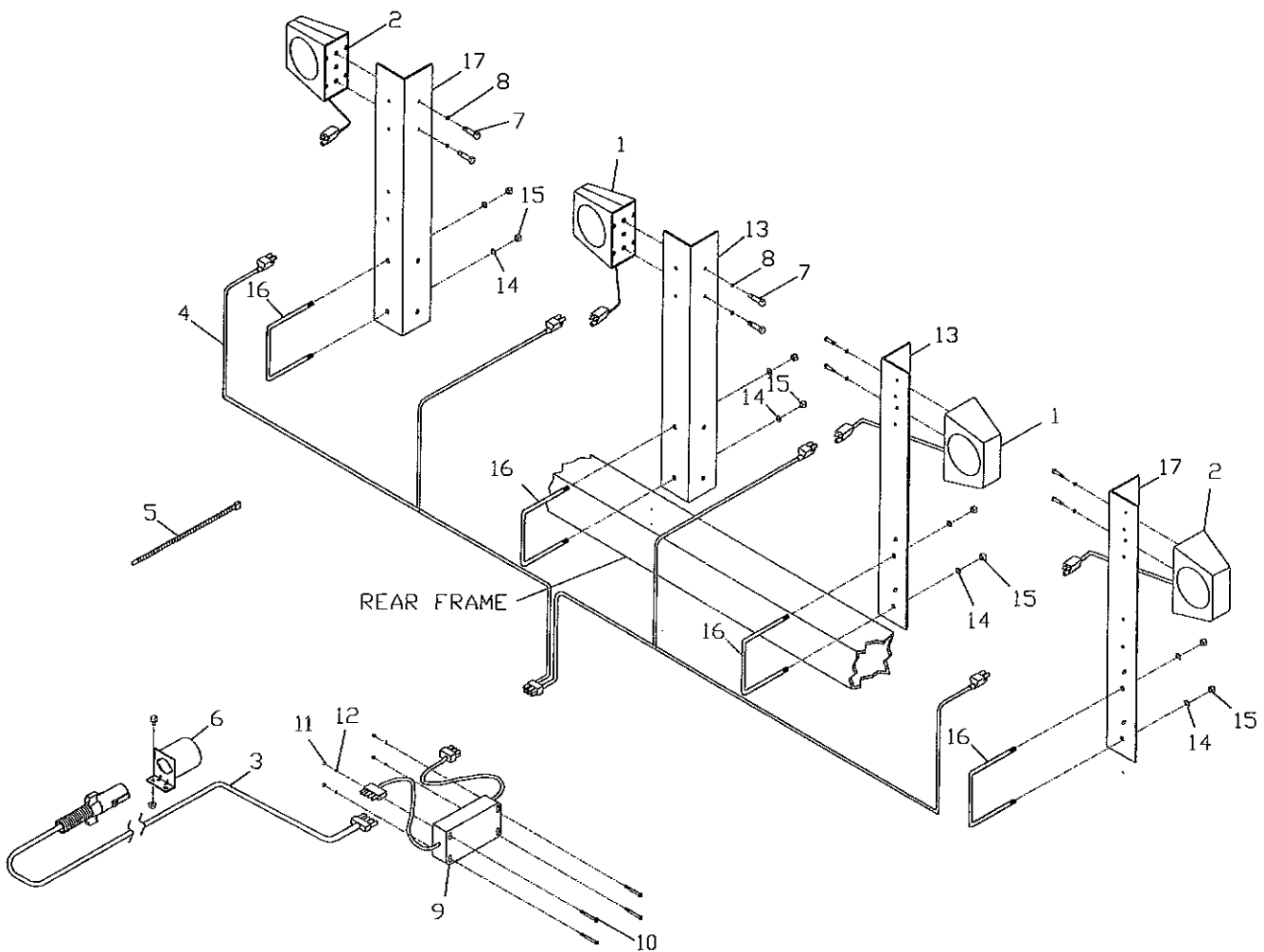
Item	Part Number	663015 Qty.	663016 Qty.	Description
1	E698009	-	1	Weldment, Scalper Shoe Left Hand (Shown above)
2	E698010	1	-	Weldment, Scalper Shoe Right Hand
3	E392001	1	1	Knife, Scalper
4	005360	2	2	Nut, Hex 1/2"-13
5	005370	2	2	Washer, Lock 1/2"
6	E174016	1	1	Plate, Clamp
7	991200	2	2	Bolt, Carriage 1/2"-13 x 2"
8	242600	1	1	Bolt, HHCS 5/8"-11 x 7-1/2"
9	035210	16	16	Washer, Flat 5/8"
10	240330	8	8	Bushing, Included in item 13 and item 14
11	E552046	6	6	Nut, Hex Lock 5/8"-11
12	990650	1	1	Bolt, HHCS 5/8"-11 x 3"
13	E036073	1	1	Arm, Lower
14	E402906	2	2	Arm, Upper
15	009800	1	1	Bolt, HHCS 5/16"-18 x 2-1/2"
16	240360	1	1	Chain, 3 Link
17	025670	2	2	Nut, Hex Lock 5/16"-18
18	005900	1	1	Bolt, HHCS 5/16"-18 x 1"
19	E738016	1	1	Spring
20	240290	1	1	Bar, Spring Take-Up
21	240310	1	1	Weldment, Clamp
22	990620	4	4	Bolt, HHCS 5/8"-11 x 2"
23	355340	1	1	Clip, 1/4" w/nuts wire rope
24	242330	8	8	Bushing, .88" OD x .656" ID x .593" Long

DISC SCALPER ASSEMBLY, MECHANICAL - (462310)



ITEM	PART NUMBER	QTY	DESCRIPTION
1	012260	4	BOLT,HHCS,3/8-16 X1 GR5 ZN
2	E232011	1	DISK
3	446460	1	PLATE, BEARING COVER
4	990980	1	BOLT,HHCS,3/4-10X7-1/2 GR5
5	I124589	4	NUT, HEX 5/8-11 GR. 5
6	462540	1	HUB ASSEMBLY
7	021180	4	WASHER, LOCK, 3/8
8	027260	6	NUT, HEX, 3/8-16 GR5 ZN
9	990710	4	WASHER, FLAT, 3/4 STD
10	462530	1	MOUNT, DISK WLDT LH
10	462520	1	MOUNT, DISK WLDT RH
11	036800	1	WASHER, LOCK, 3/4 SAE
12	J14H794	1	NUT, HEX, 3/4-16 GR5 ZN
13	262620	4	BOLT,HHCS,5/8-11X8 GR5 ZN
14	462330	1	CLAMP WELD.
15	I19508R1	4	NUT,LOCK,5/8 NYLON GR5 ZN
16	439250	2	PIVOT ARM, W/BUSHING
17	457480	2	BRACKET, SPRING
18	E738016	1	SPRING
19	462560	1	CHAIN, 6 PITCHES
20	355340	1	CLAMP, CABLE
21	018150	1	BOLT, HHCS 3/8-16 X 1-3/4
22	021190	2	WASHER, 3/8" FLAT
23	020430	4	WASHER, 5/8" FLAT
24	479640	1	WASHER, FELT
25	479630	1	COVER, FORMED
26	480470	3	WASHER, SHIM
27	501850	1	O-RING, DASH 210
28	I366112R1	1	WASHER, FLAT, 1.03 ID X 1.5 OD X .060
29	E126057	1	WASHER, FLAT, .78 ID X 1.25 OD X .105

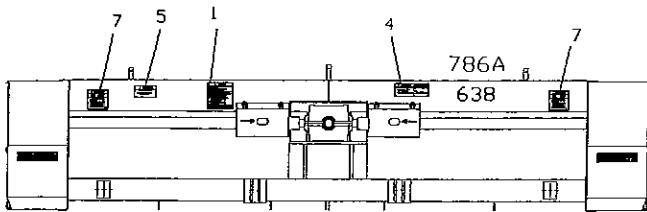
ROAD HAZARD LIGHTS ASSEMBLY - (M477991)



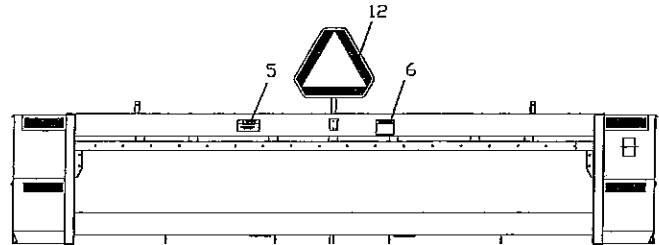
ITEM	PART NUMBER	QTY	DESCRIPTION
1	476520	2	LAMP ASSEMBLY, RED TAIL LIGHT
2	476510	2	LAMP ASSEMBLY, AMBER HAZARD LIGHT
3	476570	1	HARNES, PRIMARY SAFETY LIGHTS, 30'
4	476560	1	HARNES, WISHBONE
5	149670	6	TIE, CABLE
6	JPT1296	1	BRACKET, STORAGE
7	012051	8	BOLT, HHCS 1/4-20 x 3/4"
8	023620	8	WASHER, LOCK 5/16
9	476540	1	CONVERTER, AG SAFETY LIGHT
10	476640	4	BOLT, HEX SLOT MACHINE #10-24 x 1-1/2"
11	120590	4	NUT, HEX #10
12	120600	4	WASHER, LOCK #10
13	477910	2	ANGLE, SAFETY LIGHT MOUNTING
14	021180	8	WASHER, LOCK 3/8"
15	027260	8	NUT, HEX 3/8-16
16	477920	4	BOLT, U 3/8-16 x 7-1/16 x 6
17	477890	2	ANGLE, SAFETY LIGHT MOUNTING

SAFETY DECAL, DECAL LOCATION - (M475910)

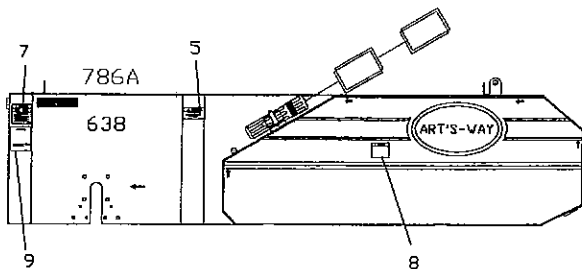
786A-638 DEFOLIATER



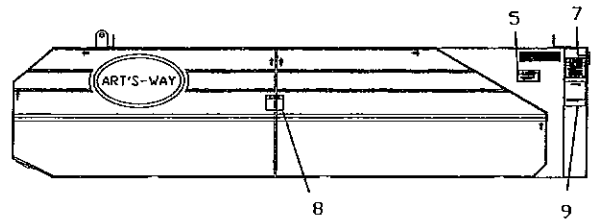
FRONT



REAR



RIGHT



LEFT

ITEM	PART NUMBER	QTY 786A	QTY 638	DESCRIPTION
1	368040	1	1	DECAL, CAUTION SAFETY INSTRUCT.
2	-	-	-	-
3	-	-	-	-
4	467460	1	1	DECAL, CAUTION HITCHING INSTR
5	467420	4	4	DECAL, WARNING DONT STAND/RIDE
6	346310	1	1	DECAL, WARNING HIGH PREASURE
7	467450	4	4	DECAL, WARNING MOVING PARTS
8	467430	2	2	DECAL, DANGER SHIELD MISSING
9	467400	2	2	DECAL, WARNING FLYING OBJECTS
10	-	-	-	-
11	268860	1	-	DECAL, ROTATING DRIVE LINE (ON PTO)
12	E224138	1	1	DECAL, S.M.V.

SPECIFICATIONS

786A - 6 ROW - 28" OR 30" ROW SPACING **638 - 6 ROW - 28" OR 30" ROW SPACING**

Operating Speed of PTO 1000 RPM
Tractor Requirements 130/140 HP Recommended (100 HP MIN.)

Drives:

Gearbox Heavy Duty 1:1.5 Ratio
Belts C-Section - Power band
Belt Tighteners Spring Loaded

Rear Wheels Dual Fixed or Steerable with Height Adjustment
Tires 7.60 - 15 Ground Drive (4)
Top Cover & Rear Drop Heavy Duty Belting (Between Rotor & Tires)

	786A	638
Row Spacing	6 - 22" or 24"	6 - 28" or 30"
Inside Width	11'10"	14'-8"
Operating Dimensions	43"H x 14'3"W	43"H x 17'-1" W
W/O Scalper	16'6"L	16'6"L
W/Knife Scalper	20'6"L	20'6"L
Shipping Dimensions		
34"H x 11'6"L x	14'3"W	17'-1" W
Weight (Approx.)	5300 lbs.	6300 lbs.

Rotors

Three Rotors

#1 (Front) Rotor 12" Flail Clusters (One Cluster Per Row) Standard, Option of Steel* or Rubber Flails, 16 Steel Flails or 18 Rubber Flails Per Cluster
#2 (Center) Rotor 12" Clusters with 18 Rubber Flails Per Cluster
#3 (REAR) ROTOR 12" Clusters with 30 Rubber Flails Per Cluster

*When steel flails are ordered, the unit is shipped with a rubber trash-deflecting skirt in front.

Height Adjustment Lift Cylinder in Front (not provided), Screw Jack at Wheels in Rear
Drive Shields Designed for One Man Removal (3)

OPTIONS

Constant Velocity PTO
Steel or Rubber Flails on Front or #1 Rotor
Scalper Attachment - Knife or Hydraulic Disk
Fixed or Steerable Rear Wheels
Cluster Width (12" or 16" on #1 Rotor)

NOTES



Quality Manufacturers of:

- **SupRaMix®** - forage vertical tub mixer
425, 500 or 710 cu. ft. capacity
- **Portable Mixer-Processor**
105 bushel with 20" hammer Mill or 150 bushel with 26" Hammer Mill.
- **GRIKKER - Mixer Processor**
Economical portable 105 bushel Grinder Mixer with a 20" Hammer Mill — other options available.
- **CATTLEMAXX - Cattle Processing**
105 bushel or 150 bushel with 20" Roller Mill for cattle applications.
- **Hammer Mills**
26" electrically or PTO driven mills.
- **Roller Mills**
10", 20", 30" or 36" PTO or electrically driven mills.
- **SCALE SYSTEMS**
Electronic weighing equipment — from basic weighing to a computerized system.
Platform Scales
Universal Scales
Small Animal Scales
Mounting Scales
Scale Accessories
Indicators, single ingredient & Batching
- **UFT Grain Drills**
10', 12', 15' or 30' seeding width.
- **UFT High Dump Wagons**
- **Speedy Edible Bean Equipment**
- **Finishing Mowers**
60" or 72" Mid-Mount Mount
72" Rear Mount Mowers.
- **Eversman PreSeeder**
15' to 30' tillage tool that prepares the ideal seed bed, incorporates chemicals and plants in one pass.
- **Eversman Ditchers**
43" to 84" ditch width.
20" to 33" ditch depth.
- **Eversman Land Planes**
16', 20' or 24' blade widths.
- **Sugar Beet Defoliators**
4 to 12 row defoliators with different row spacings. Optional hydraulic or mechanical scalpings.
- **Sugar Beet Harvesters**
4 to 8 row harvesters with different row spacings.
- **MEGA eater**
4-row potato harvester.
- **LOGAN - Potato Equipment**
Potato Harvesters, Potato Planters, Windrowers and Bulk Boxes.
- **Art's-Way/UFT Flail Shredders**
Various cutting widths.
- **Grain Wagons**
350 bushel or 475 bushel center dump.
280 bushel, 320 bushel, 390 bushel or 470 bushel side dump.

Art's-Way Manufacturing Co., Inc.

P.O. Box 288, Highway 9 West • Armstrong, Iowa 50514-0288
Phone: (712) 864-3131 • Fax: (712) 864-3154