

Art's-Way Manufacturing Co., Inc.

Model 1222AHS
12 Row High Speed Defoliator

Illustrated Parts Catalog
567550

Issued 11-2010

ILLUSTRATED PARTS CATALOG



*This symbol means **ATTENTION! BECOME ALERT! YOUR SAFETY IS INVOLVED.** The message that follows the symbol contains important information about your safety. Carefully read the message. Make sure you fully understand the causes of possible injury or death.*

IF THIS MACHINE IS USED BY AN EMPLOYEE, IS LOANED, OR IS RENTED, MAKE SURE THAT THE OPERATOR UNDERSTANDS THE TWO INSTRUCTIONS BELOW.

BEFORE THE OPERATOR STARTS THE ENGINE:

1. GIVE INSTRUCTIONS TO THE OPERATOR ABOUT SAFE AND CORRECT USE OF THE MACHINE.
2. MAKE SURE THE OPERATOR READS AND UNDERSTANDS THE OPERATOR'S MANUAL FOR THIS MACHINE.

WARNING

IMPROPER OPERATION OF THIS MACHINE CAN CAUSE INJURY OR DEATH.

BEFORE STARTING THE ENGINE, DO THE FOLLOWING:

1. READ THE OPERATOR'S MANUAL.
2. READ ALL SAFETY DECALS ON THE MACHINE.
3. CLEAR THE AREA OF OTHER PERSONS.

LEARN AND PRACTICE SAFE USE OF MACHINE CONTROLS IN A SAFE AND CLEAR AREA BEFORE YOU OPERATE THIS MACHINE ON A JOB SITE.

It is your responsibility to observe pertinent laws and regulations and to follow manufacturer's instructions on machine operation and maintenance.

See your Authorized Art's-Way Manufacturing Co., Inc. dealer or Art's-Way Manufacturing Co., Inc. for additional operator's manuals, illustrated parts catalogs, and service manuals.

TO THE OWNER

Congratulations on the purchase of your new Art's-Way 1222AHS Defoliator. You have selected a top quality machine that is designed and built with pride to ensure you have many years of efficient and reliable service.

Many people have worked on the design, production, and delivery of this 1222AHS Defoliator. The information in this manual is based on the knowledge, study, and experience through years of specializing in the manufacturing of farm machinery. This manual is designed to provide you with important information regarding safety, maintenance, and machine operation so you can and will get the best possible performance from your 1222AHS Defoliator.

Even if you are an experienced operator of this or similar equipment, we ask that you **read this manual before operating the 1222AHS Defoliator**. The way you operate, adjust, and maintain this unit will have much to do with its successful performance. Any further questions you may have about this product of Art's-Way equipment should be directed to your local Art's-Way dealer or to Art's-Way Manufacturing Co., Inc., Armstrong, Iowa, 50514, and (712) 864-3131.

SPECIFICATIONS AND DESIGN ARE SUBJECT TO CHANGE WITHOUT NOTICE

Art's-Way Manufacturing Co., Inc. is continually making product improvements. In doing so, we reserve the right to make changes and/or add improvements to our products without obligation for the equipment previously sold.

Modifications to this 1222AHS Defoliator may affect the performance, function, and safety of its operation. Therefore, no modifications are to be made without the written permission of Art's-Way Manufacturing Co., Inc. Any modification made without the written permission of Art's-Way Mfg. Co. shall void the warranty of this product.

In the interest of continued safe operation of this 1222AHS Defoliator, pay particular attention to the safety alert symbol(s) throughout this Manual.

ART'S-WAY MANUFACTURING CO., INC. STATEMENT OF PRODUCT LIABILITY

Art's-Way Manufacturing Co., Inc. recognizes its responsibility to provide customers with a safe and efficient product. Art's-Way Manufacturing Co., attempts to design and manufacture its products in accordance with all accepted engineering practices effective at the date of design. This statement should not be interpreted to mean that our products will protect against the user's own carelessness or failure to follow common safety practices nor will Art's-Way Manufacturing Co., be liable for any such act. In addition, Art's-Way Manufacturing Co. assumes no liability for any altered product or any modified product by users or anyone other than an authorized dealer.

IMPORTANT WARRANTY INFORMATION

The warranty for this 1222AHS Defoliator appears on page 4 of this manual. In order to establish proper warranty registration, the Warranty Registration must be completed and returned to the factory. Failure to comply with this requirement may result in reduced warranty allowances.

LIMITATIONS OF THIS MANUAL

This manual contains operating instructions for your 1222AHS Defoliator only. Any mention of other machinery in this manual other than the 1222AHS Defoliator is for reference only. This manual does not replace nor is it to be used for any machinery that may be attached to or used in conjunction with the 1222AHS Defoliator.

PARTS & SERVICE

As the purchaser of your new 1222AHS Defoliator, it is very important to consider the following factors:

A. Original Quality

B. Availability of Service Parts

C. Availability of Adequate Service Facilities

Art's-Way Manufacturing Co., Inc. has an excellent dealership network ready to answer any questions you may have about your export defoliator. Parts for your machine may be ordered through our dealers. When placing a parts order, please have the **model** and **serial number** ready. This will allow the dealer to fill your order as quickly as possible.

For your convenience, we have provided this space for you to record your model number, serial number, and the date of purchase, as well as your dealer's name and address.

Owner's Name: _____

Owner's Address: _____

Purchase Date: _____

Dealership Name: _____

Dealership Address: _____

Dealership Phone No.: _____

Machine Serial Number Location

The placard containing the serial and model number is located on the front left-hand side of the defoliator.

Enter the serial number and model of your defoliator and header within the space provided.



Figure 1 - Location of Serial & Model Number Placard on Defoliator

	
SERIAL NO.	<input type="text"/>
MODEL NO.	<input type="text"/>
<p><i>Manufactured By</i> <i>Art's-Way Manufacturing Co., Inc.</i> <i>Armstrong, IA</i></p>	

Figure 2 - Serial and Model Number Placard

TABLE OF CONTENTS

TO THE OWNER	1
SPECIFICATIONS AND DESIGN ARE SUBJECT TO	
CHANGE WITHOUT NOTICE	1
ART'S-WAY MANUFACTURING CO., INC.	
STATEMENT OF PRODUCT LIABILITY.....	1
IMPORTANT WARRANTY INFORMATION.....	1
LIMITATIONS OF THIS MANUAL	1
PARTS & SERVICE	2
TABLE OF CONTENTS	3
LIMITED WARRANTY	4
SAFETY FIRST	5
NOTICES OF DANGER, WARNING, AND CAUTION.....	5
SAFETY GUIDELINES	5
SAFETY GUIDELINES	6
BEFORE OPERATING	6
DURING OPERATION.....	6
MAINTENANCE SAFETY	6
HYDRAULIC SAFETY	6
TRANSPORTATION SAFETY.....	7
STORAGE SAFETY.....	7
TIRE SAFETY	7
ASSEMBLY SAFETY	7
Illustrated Parts Catalog.....	8
ALPHANUMERIC INDEX.....	8
PTO ASSEMBLY	11
POWER TAKE OFF (PTO) DRIVE (1-3/4-20	
TRACTOR SPLINE) 2008	12
POWER TAKE OFF (PTO) DRIVE (1-3/8-21	
TRACTOR SPLINE).....	13
HITCH ASSEMBLY.....	14
HITCH PARTS AND HYDRAULICS	15
REAR DOOR ASSEMBLY.....	16
1222A HS MAIN ASSEMBLY	18
ROTOR ASSY.....	20
DRIVE ASSY	22
SHIELDS, HOUSING, AND DOORS.....	24
GEARBOX ASSEMBLY	27
ROTOR ASSY – STEEL, DRIVEN	28
ROTOR ASSY – STEEL DRIVER.....	30
RUBBER FLAIL CLUSTER ASSEMBLY #3 ROTOR	31
CLUSTER ASSY – RUBBER 8 PIN	33
FIXED CARRIER WHEELS	33
SCALPER ASSEMBLY, KNIFE.....	36
DISK SCALPER ASSY, LH AND RH	38
MECHANICAL KNIFE SCALPER ASSEMBLY	40
STEERING AND LIFT HYDRAULIC CIRCUITS	42
STABILIZER FRAME AND WHEEL ASSEMBLY.....	45
STEERABLE WHEEL SET ASSEMBLY.....	46
ROAD HAZARD LIGHT ASSEMBLY	49
DECAL LOCATION.....	50

LIMITED WARRANTY

Art's-Way Manufacturing Co., Inc. warrants the products it sells to be free from defects in material and workmanship for a period of one (1) season after the date of delivery to the first (original) purchaser, subject to the following conditions:

- Art's-Way Manufacturing Co., Inc. obligation and liability under this warranty is to repair or replace (at the company's option) any parts that upon manufacture were defective in material or workmanship.
- All parts and repairs under this warranty shall be supplied at Art's-Way Manufacturing Co., Inc. or an authorized Art's-Way Manufacturing Co., Inc. dealer, at the option of Art's-Way Manufacturing Co., Inc.
- Art's-Way Manufacturing Co., Inc. warranty does not extend to parts and elements not manufactured by Art's-Way Manufacturing Co., Inc. and which carry the warranty of other manufacturers.
- Transportation or shipping to an authorized dealer for necessary repairs is at the expense of the purchaser.
- Art's-Way Manufacturing Co., Inc. makes no other warranty expressed or implied and makes no warranty of merchantability or fitness for any particular purpose beyond that expressly stated in this warranty. Art's-Way Manufacturing Co., Inc. liability is limited to the terms set forth in this warranty and does not include any liability for direct, indirect, incidental or consequential damages or expenses of delay and the company's liability is limited to repair or replacement of defective parts as set forth herein.
- Any improper use and/or maintenance, including operation after discovery of defective or worn parts, operation beyond the rated capacity, substitution of parts not approved by Art's-Way Manufacturing Co., Inc., or any alternation or repair by other than an authorized Art's-Way Manufacturing Co., Inc. dealer which affects the product materially and adversely, shall void the warranty.
- No dealer, employee or representative is authorized to change this warranty in any way or grant any other warranty unless such change is made in writing and signed by an officer of Art's-Way Manufacturing Co., Inc.
- Some states do not allow limitations on how long an implied warranty lasts or exclusions of, or limitations on relief such as incidental or consequential damages, so the above limitations or exclusions may not apply to you. This warranty gives you the specific legal rights and you may have other rights that vary from state to state.

SAFETY FIRST

“A careful operator is the best insurance against an accident”

(National Safety Council)

Most accidents can be prevented if the operator:

- Fully understands how the machine functions
- Can anticipate situations which may produce problems
- Can make necessary corrections before problems develop



Figure 3 - Universal Safety Alert Symbol

**THIS SYMBOL MEANS
ATTENTION!
BECOME ALERT!
YOUR SAFETY IS INVOLVED!**

The American Society of Agricultural Engineers has adopted the Universal Safety Alert Symbol as a way to identify areas of potential danger if the equipment is not operated correctly. Please be alert whenever you see this symbol in the manuals or on your harvester.

Art's-Way Manufacturing Co., Inc. strives to make our equipment as safe as possible. The Art's-Way 1222AHS Defoliator conforms to applicable safety standards at the time of manufacturing. A safety conscious equipment operator makes an effective accident-prevention program complete.

Safety features and instructions for the 1222AHS Defoliator are detailed in the [Safety Guidelines](#) section of this Operator's Manual. It is the responsibility of the owner to ensure that all operators read and understand the manual before they are allowed to operate the 1222AHS Defoliator. ([Occupational Safety and Health Administration \(OSHA\) regulations 1928.57.](#))

NOTICES OF DANGER, WARNING, AND CAUTION

Signal Words: Note the use of signal words **DANGER**, **WARNING**, and **CAUTION** on the 1222AHS Defoliator and in this manual. The appropriate signal word for each has been selected using the following guidelines:



DANGER: IMMEDIATE AND SPECIFIC HAZARD WHICH *WILL* RESULT IN SEVERE PERSONAL INJURY OR DEATH IF PROPER PRECAUTIONS ARE NOT TAKEN.



WARNING: SPECIFIC HAZARD OR UNSAFE PRACTICE *COULD* RESULT IN SEVERE PERSONAL INJURY OR DEATH IF PROPER PRECAUTIONS ARE NOT TAKEN.



CAUTION: A REMINDER OF GOOD SAFETY PRACTICES. PERSONAL INJURY *COULD* RESULT IF PROPER PROCEDURES ARE NOT FOLLOWED.



SAFETY GUIDELINES



Remember:

“The Best Operator is a Safe Operator”



CAUTION: READ AND UNDERSTAND THE OPERATOR'S MANUAL AND ALL THE SAFETY DECALS BEFORE OPERATING THE DEFOILIATOR. REVIEW ALL SAFETY INSTRUCTIONS WITH ALL OPERATORS ANNUALLY.

BEFORE OPERATING

- Do not wear loose fitting clothing as it may catch in moving parts.
- Make sure to install and/or secure all guards and shields, including the tractor power take-off (PTO) master shield, before starting or operating the defoliator.
- Be sure that the correct implement driveline parts are used and that they are properly secured.
- Lower the lifter wheels when the defoliator is not in use.
- Install the safety chain when attaching the defoliator to the tractor.
- Clear the area of bystanders, especially children, when making repairs, adjustments or performing maintenance on the harvester.
- Do not allow riders.
- Put all tractor and machine controls in “neutral” and disengage the PTO before starting. Follow the starting instructions according to your tractor manual.
- Operate the defoliator only while seated on the tractor seat.
- Make sure the unit is adequately supported with safety blocks or safety stands when changing tires or performing maintenance.



CAUTION: KEEP WELL CLEAR OF MOVING PARTS. BE SURE TO SHUT OFF THE TRACTOR, SET THE PARKING BRAKE, PUT THE MACHINE IN NEUTRAL, AND REMOVE THE TRACTOR KEY WHILE MAKING ADJUSTMENTS. WAIT FOR ALL MOVEMENT TO STOP BEFORE APPROACHING THE MACHINE.

DURING OPERATION

- Keep hands, feet, hair, and clothing away from moving parts.
- Keep all shields and guards in place and in good working condition.
- Keep all bystanders, especially children, away from the defoliator while in operation.

- Do not allow riders while the defoliator is in operation.
- Do not attempt to unclog, clean, or adjust the defoliator while it is running.
- Stay away from overhead power lines. Electrocutation can occur even without direct contact.
- Keep all hydraulic lines, fittings, and couplers tight and free of leaks. (Refer to Safety Guidelines – Hydraulic Safety.)
- Use caution when ascending or descending on the defoliator. Wet shoes or boots are slippery.

MAINTENANCE SAFETY

- Follow all operating, maintenance and safety instructions found in this Manual.
- Before servicing, adjusting, repairing or unclogging the machine, always make sure the tractor engine is stopped, key in your pocket, the machine is lowered to the ground, all controls are placed in neutral, the parking brake is set, and all the moving parts have stopped.
- Use sufficient tools, jacks, and hoists that have the capacity for the job.
- Use support blocks or safety stands when changing tires or performing maintenance.
- Follow good shop practices of keeping the service area clean and dry and use adequate light for the job at hand.
- Before applying pressure to the hydraulic system, make sure all lines, fittings and couplers are tightly secured and in good condition.
- Make sure all shields/guards are in place and properly secured when performing maintenance.

HYDRAULIC SAFETY

- Make sure components in the hydraulic system are kept clean and in good working condition.
- Relieve pressure from the hydraulic system before servicing or disconnecting from the tractor.
- Keep all hydraulic lines, fittings, and couplers tightly secured and free of leaks.
- Replace any worn, cut, abraded, flattened or crimped hoses.
- Do not make any temporary repairs to the hydraulic lines, fittings or hoses using tape, clamps, or cement. The hydraulic system operates under extremely high pressure and temporary repairs may fail suddenly and create a hazardous/dangerous situation.

- Wear proper hand and eye protection when searching for a high-pressure hydraulic leak. Use a piece of wood or cardboard as a backstop instead of hands to identify and isolate a leak. If injured by a concentrated high-pressure stream of hydraulic fluid, seek medical attention immediately. Serious infection or toxic reaction can develop if hydraulic fluid penetrates the surface of the skin.
- Before applying pressure to the system, make sure all components are tight and that the hydraulic lines, hoses and couplings are not damaged.

TRANSPORTATION SAFETY

- Make sure the defoliator complies with all local regulations regarding transporting equipment on public roads and highways.
- Make sure the Slow Moving Vehicle (SMV) emblem and all lights and reflectors required by local highway and transportation authorities are properly in place, clean and clearly visible to traffic.
- Do not allow riders on any machinery during transport.
- Make sure the defoliator is securely attached to the tractor and install a safety chain to the defoliator.
- Make sure the tractor brake pedals are latched together.
- Do not exceed 10 mph (16 km/h) when transporting the defoliator. Always reduce speed on rough roads and surfaces, or when going down inclines.
- Use caution when turning and always use the turn signals on the tractor to indicate your turning intentions to the other traffic.
- The weight of the trailed machine should NEVER exceed the weight of the towing vehicle.
- Check all clearances carefully whenever the machine is towed.
- Stay away from overhead obstructions and power lines during transport. Electrocution can occur even without direct contact.

STORAGE SAFETY

- Store the defoliator in an area away from human activity.
- Do not permit children to play on or around the stored machine at any time.
- Make sure that the defoliator is stored in an area with a firm and level base to prevent the machine from tipping or sinking into the ground.
- Block the wheels to prevent the machine from rolling.

TIRE SAFETY

- Have only a qualified tire dealer or tire repair service perform tire repairs.
- Do not attempt to install a tire on a wheel or rim unless you have the proper equipment and experience to do the job.
- Follow proper procedures when installing a tire on a wheel or rim to prevent an explosion that could result in serious injury.
- Do not substitute tires with a lesser road rating and/or capacity for the original equipment tires.



CAUTION: FAILURE TO FOLLOW PROPER PROCEDURES WHEN INSTALLING A TIRE ON A WHEEL OR RIM CAN PRODUCE AN EXPLOSION THAT MAY RESULT IN SERIOUS INJURY OR DEATH. DO NOT ATTEMPT TO INSTALL A TIRE UNLESS YOU HAVE THE PROPER EQUIPMENT AND EXPERIENCE TO PERFORM THE JOB. REPLACEMENT, REPAIR, AND/OR MAINTENANCE SHOULD BE DONE BY A QUALIFIED TIRE DEALER OR QUALIFIED REPAIR SERVICE.

ASSEMBLY SAFETY

- Use adequate manpower to perform assembly procedures safely.
- Assemble the defoliator in an area with sufficient space to maneuver the largest components and allow easy access to all sides of the machine.
- Use only forklifts, lift cranes, jacks and tools with sufficient capacity for the loads.
- Do not allow spectators, especially children, in the working area.

Remember:

"The Best Operator is a Safe Operator"

ILLUSTRATED PARTS CATALOG

- The figure item corresponds to the number shown in the illustration. Figure items having a dash “-” next to the number indicates that the figure item is not displayed on the corresponding illustration.
- Numbers listed in the part number column are the numbers under which the parts are manufactured and by which the parts are identified by the manufacturer.
- Requirement shown in the Units Per Assy column is per defoliator or assembly. Items that have no specified quantity are designated by the letters “AR” (as required). “RF” listed in the Units Per Assy column indicates that the item is listed as a reference and the requirement is listed in another figure of the IPC.

The relationship of component parts of an installation or assembly may be determined by the degree of indenture in the nomenclature column. The next higher assembly can be found by referring to the first indentation above and to the left. The following example shows the format of this indented system:

1	2	3	4
*	*	*	*
DETAIL PART OR ASSEMBLY			
*	DETAIL PART BREAKDOWN OR ASSEMBLY BREAKDOWN		
*	*	ADDITIONAL BREAKDOWN OF DETAIL PART OR ASSEMBLY	
*	*	*	ADDITIONAL BREAKDOWN OF DETAIL PART OR ASSEMBLY

ALPHANUMERIC INDEX

007590	45	345850	12, 13
007600	45	345870	12
012630	45	345910	12, 13
035420	45	345950	12, 13
146670	51	345960	12, 13
182230	12, 13	345980	12, 13
182890	12, 13	346310	51
183330	21	349250	13
196770	13	355500	51
211720	39	357160	47
240290	41	357880	13
240310	41	357890	13
240350	41	368040	51
244260	21	383000	31, 33
247680P	27	394210	31
247690P	27	414470	47
247730P	27	414480	47
247820P	27	420790	21
247840P	27	420870	14
268860	12, 13	422110	23
273750	45	422940	21
278970	29, 30	425090	21, 30
286520	11	449190	51
287490	12	455160	51
287500	12	458410	21
289500	51	458420	21
340140	12, 13	460010	51
340180	12, 13	467400	51
340190	12, 13	467420	51
340200	12	467430	51
340210	13	467450	51
345830	13	467460	51
345840	12	469370	33

476450	51	552920	21
476460	51	553020	15
476470	51	553030	15
476490	49	553040	15
476510	49	553050	35, 37, 43
476520	49	553060	43
476540	49	553070	43
476560	49	553500	35
476570	49	555260	21
487770	51	556400P	27
498750	13	556410P	27
498810	13	556420P	27
498820	12	556430P	27
505780	15, 35, 37	556440P	27
505820	15, 37, 43	556890	21
506200	15, 37, 43	563999	35
506750	35	564930	35
510250	39	565500	14
510330	39	565500 - 10	15
510380	39	565550	14
510400	39	565650	21, 23, 25
510410	39	565700	17, 19
510420	39	565711	25
510430	39	565900	14
510450	29, 30	565910	19
510540	39	565940	25
510570	39	565960	11
512080	39	565990	25
515360	43, 47	566000 - 40	23
515370	43, 47	566000 - 70	25
518710	25	566000 - 80	51
518840	25	566230	21
518850	25	566240	25
519480	51	566250	23
522140	23	566260	19
522150	23	566270	19
523380	45	566280	19
527680	11, 35, 37, 47	566290	19
527700	11, 37, 47	566300	17
528160	35	566330	17
534120	47	566340	17
535010	37	566350	35
535060	37	566400	35
535410	21	566450	14, 35, 37, 43, 47
535420	21	566480	35
535580	37	566500	35
535790	35, 45	566690	35, 47
536070	33	566700	35
536150	21, 29	566750	23
536160	30	566760	23
536170	29	566800	17
536180	21	566821	17
536190	21	566880	17
536240	21	566890	17
536670	14	566900	17
537030	29, 30	566930	11
537040	29, 30	566940	11
537110	33	566950	11
539770	35, 47	567000	17
539780	35, 47	567010	23
547670	21	567030	19
552150	21, 27	567040	19
552270	41	567050	19
552280	41	567070	25
552340	37, 41, 43	567090	25
552350	37	567100	25
552790	21, 29	567110	25
552850	23	567120	25
552890	23	567130	25

567140	25	TG0760	47
567150	25	U10100995	49
567200	25	U50800004	29
567220	25	U50800004	30
567230	11		
567250	23		
567260	23		
567270	11		
567280	17		
567310	45		
567320	11		
567340	37		
567360	45		
567370	45		
567400	37		
567410	11		
567450	37		
567510	37		
567520	37		
567530	51		
567540	51		
567570	49		
567600	35		
567610	17		
567950	47		
567950 - 100	43		
568010	47		
568050	47		
568100	47		
568260	47		
568270	47		
568350	43		
568360	43		
575380	12		
575390	12		
575400	12		
575410	12, 13		
575420	12, 13		
575440	12		
962640	51		
E036073	41		
E072317P	27		
E174016	37		
E224133	35		
E278029	31, 33		
E392001	37, 41		
E504003	25		
E738016	41		
E840001	37		
I1285718C2	15, 35, 37, 43		
I63506C3	14		
JPT1296	49		
M394230	31		
M476580	21		
MAN566000 - 60	19		
R39520	45		

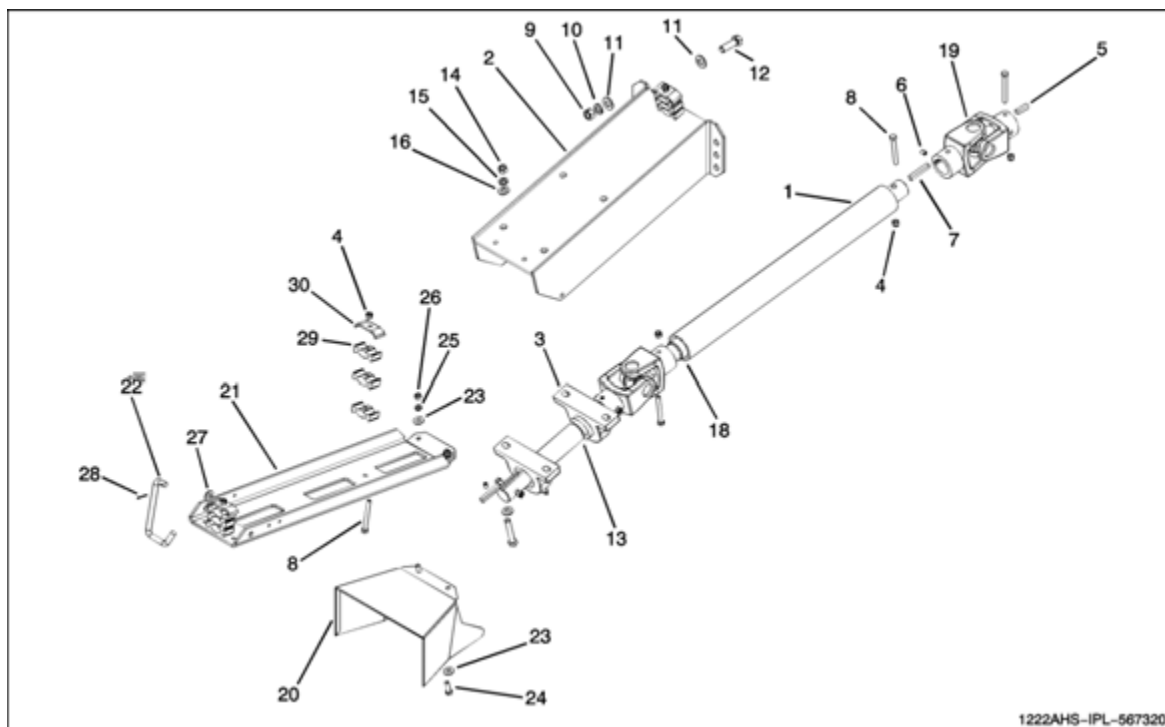
PTO ASSEMBLY

FIG ITEM	PART NUMBER	NOMENCLATURE	UNITS PER ASSY
	567320	PTO ASSEMBLY	RF
1	566930	SPIN SLEEVE	1
2	566950	SUPPORT WLDT	1
3	238420	PB BEARING 1.75 BORE	2
4	I359783C1	NYLON INSERT, LOCKNUT 3/8-16 UNC	8
5	006670	KEY, SQUARE 3/8 X 1-1/2	1
6	120970	SHSS 3/8 - 16 X 1/2 CUP POINT	4
7	167920	KEY, SQUARE 3/8 X 2-1/2	4
8	I189304	BOLT, HHCS 3/8-16 X 3-1/4	8
9	483700	NUT, HEX 5/8-11	6
10	020440	WASHER, LOCK 5/8	1
11	035210	FW 0.625	12
12	990620	BOLT, HHCS 5/8-11 X 2	6
13	566940	SHAFT, INPUT STUB	1
14	005360	NUT, HEX 1/2-13	4
15	005370	WASHER, LOCK 1/2 ZN	4
16	005200	FW 0.5	8
17	990840	BOLT, HHCS 1/2-13 X 3.00 GR5 ZN	4
18	565960	SHAFT, INPUT	1
19	286520	U-JOINT 1-3/4 RB X 1-3/4 RB	2
20	567230	SHIELD, PTO	1
21	567270	SUPPORT	1
22	567410	HOOK, PTO MOUNT	1
23	021190	WASHER, FLAT 3/8 STD 7/16 X 1 X 5/64 ZN	4
24	006690	H-BOLT 0.3750-16 X 1.25 X 1.25-N	2
25	021180	LW 0.375	2
26	027260	H NUT 0.3750-16-GR5 ZN	2
27	I120396	WASHER, FLAT 0.53 X 1.06 X 0.074	1
28	034360	PIN, COTTER 1/8 X 1.00	1
29	527700	CLAMP, HOSE	9
30	527680	BAR, HOSE CLAMP	3

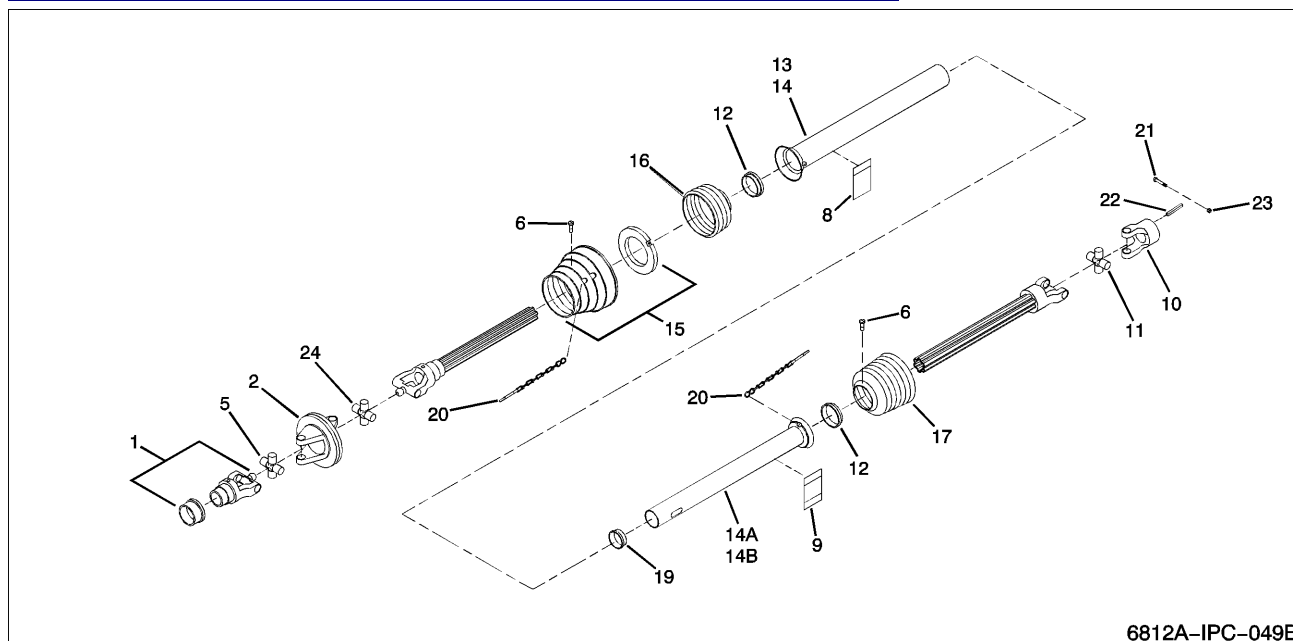
POWER TAKE OFF (PTO) DRIVE (1-3/4-20 TRACTOR SPLINE) 2008

FIG ITEM	PART NUMBER	NOMENCLATURE	UNITS PER ASSY
1	575380	COMPLETE PTO ASSEMBLY, 1-3/4-20 TRACTOR SPLINE 2008	1
- 1A	575390	YOKE, SPLINE	1
	575440	* COLLAR KIT, OSG (INCLUDED WITH FIG ITEM 1)	1
	345840	YOKE 1-3/4-20 SPLINE (2007 & PRIOR)	1
	340200	* COLLAR KIT, (2007 & PRIOR)	1
2	575400	DOUBLE YOKE ASSEMBLY	1
- 2A	345850	DOUBLE YOKE ASSEMBLY (2007 & PRIOR)	1
5	575420	KIT, CROSS AND BEARING CV - PLAIN	2
- 5A	345870	KIT, CROSS AND BEARING CV - PLAIN (2007 & PRIOR)	2
6	345980	SCREW, SHIELD (IN FIG ITEMS 15, 16, AND 17)	8
8	268860	DECAL, DANGER ROTATING DRIVELINE (ON FIG ITEM 13)	1
9	340180	DECAL, DANGER SHIELD MISSING (ON FIG ITEM 14)	1
10	345910	YOKE, 1-3/4 RB 3/8 KEYWAY	1
11	182230	KIT, CROSS AND BEARING	1
12	182900	BEARING, RING SC 25	2
13	287490	TUBE, OUTER SHIELD OVAL 1-3/4	1
14	287500	TUBE, INNER SHIELD ROUND 1-3/4	1
15	345950	ASSEMBLY, CV CONE AND BEARING	1
16	345960	SHIELD, CONE 3 RIB	1
17	340140	SHIELD, CONE 7 RIB	1
19	340190	BEARING, SUPPORT	1
20	182890	CHAIN, SAFETY SHIELD	2
21	990870	BOLT, HHCS 3/8-16 X 2 INCH	1
22	021530	KEY, SQUARE 3/8 X 2	1
23	E552044	NUT, LOCK 3/8-16 HEX TOP GRADE A	1
24	575410	CROSS AND BEARING KIT W/ CENTRAL LUBE CV	1
- 24A	498820	CROSS AND BEARING KIT W/ CENTRAL LUBE CV (2007 & PRIOR)	1

- = Not Illustrated

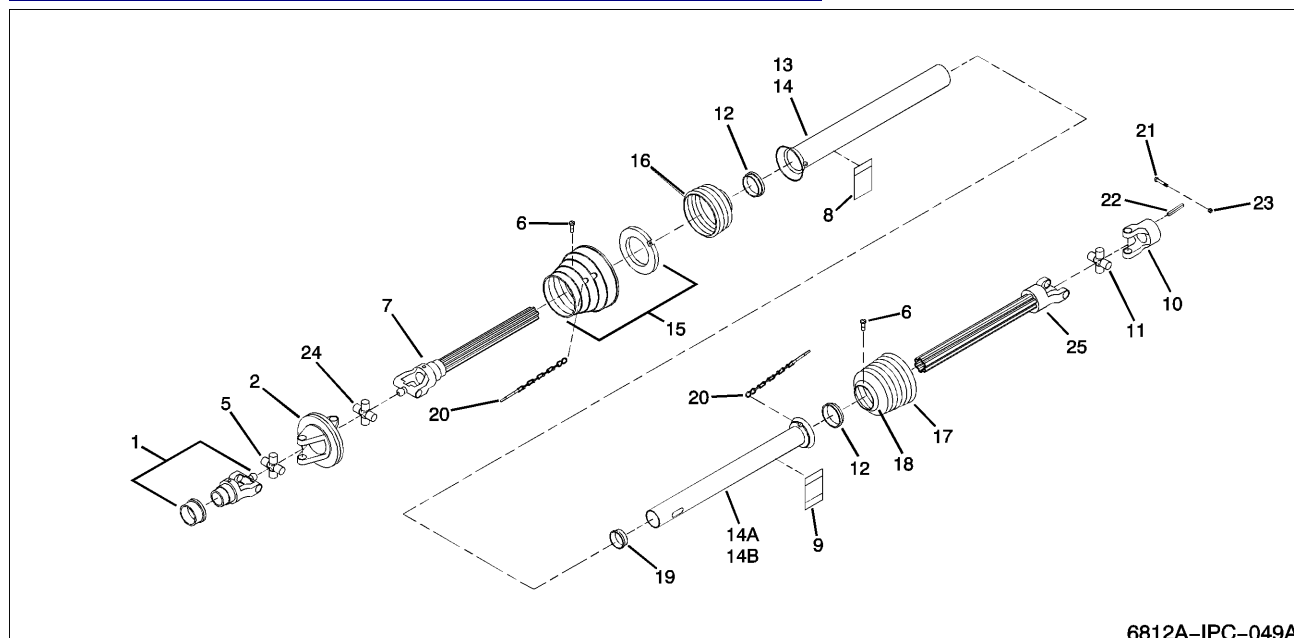
POWER TAKE OFF (PTO) DRIVE (1-3/8-21 TRACTOR SPLINE)

FIG ITEM	PART NUMBER	NOMENCLATURE	UNITS PER ASSY
	498750	COMPLETE PTO ASSEMBLY, 1-3/8-21 TRACTOR SPLINE	1
1	345830	YOKE, 1-3/8-21 SPLINE	1
	340210	* COLLAR KIT, 1-3/8-21 (INCLUDED WITH FIG ITEM 1)	1
2	345850	DOUBLE YOKE	1
5	575420	KIT, CROSS AND BEARING CVM - PLAIN	2
6	345980	SCREW, SHIELD (IN FIG ITEMS 15, 16, AND 17)	8
7	498810	YOKE ONLY, W/ CENTERING	1
8	268860	DECAL, DANGER ROTATING DRIVELINE (ON FIG ITEM 13)	1
9	340180	DECAL, DANGER SHIELD MISSING (ON FIG ITEM 14)	1
10	345910	YOKE, 1-3/4 RB 3/8 KEYWAY	1
11	182230	KIT, CROSS AND BEARING	1
12	182900	BEARING, RING SC 25	2
13	357880	TUBE, OUTER SHIELD OVAL 1-3/8	1
14	357890	TUBE, INNER SHIELD ROUND 1-3/8	1
15	345950	ASSEMBLY, CV CONE AND BEARING	1
16	345960	SHIELD, CONE 3 RIB	1
17	340140	SHIELD, CONE 7 RIB	1
18	349250	COLLAR, REINFORCED (359474)	1
19	340190	BEARING, SUPPORT	1
20	182890	CHAIN, SAFETY SHIELD	2
21	990870	BOLT, HHCS 3/8-16 X 3 INCH	1
22	021530	KEY, SQUARE 3/8 X 2	1
23	E552044	NUT, LOCK 3/8-16 HEX TOP GRADE A	1
24	575410	CROSS AND BEARING KIT W/ CENTRAL LUBE CV	1
25	196770	YOKE ONLY	1

- = Not Illustrated

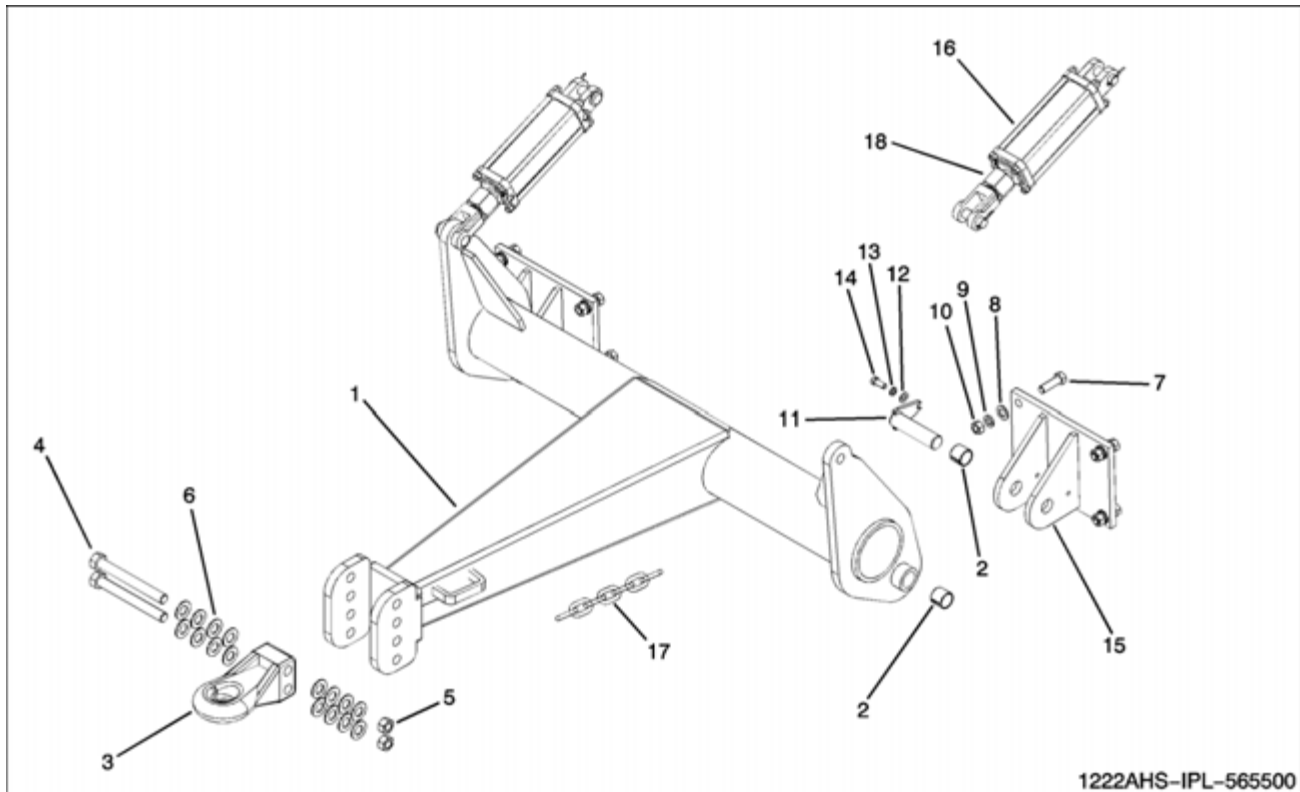
HITCH ASSEMBLY

FIG ITEM	PART NUMBER	NOMENCLATURE	UNITS PER ASSY
	565500	HITCH ASSEMBLY	RF
1	565550	HITCH WLDT	1
2	536330	BUSHING, SPLIT	4
3	420870	HITCH, BOLT ON	1
4	390070	BOLT, HHCS 1.00-8 X 9.0 GR5 ZN	2
5	J14H805	NUT, HEX 1.00-8 GR5 ZN	2
6	1107389	WASHER, FLAT 1 1/16 X 2 X 1/8	16
7	991050	HBOLT 0.7500-10 X 2.5 X 2.5-N	8
8	I131017	FW 0.812	8
9	036800	LW 3/4" SAE MED	8
10	J14H794	NUT, HEX 3/4-10 GR5 ZN	8
11	536670	CLEVIS PIN ASSY	2
12	005200	FW 0.5	2
13	005370	WASHER, LOCK 1/2 ZN	2
14	010730	HBOLT 1/2-13 X 1.25" GR5 ZN	2
15	565900	LUG WLDT, HITCH	2
16	566450	CYL, HYD 3.5"B X 8.0"	2
17	I63506C3	SAFETY CHAIN	1
18	538870	STOP NUT	1

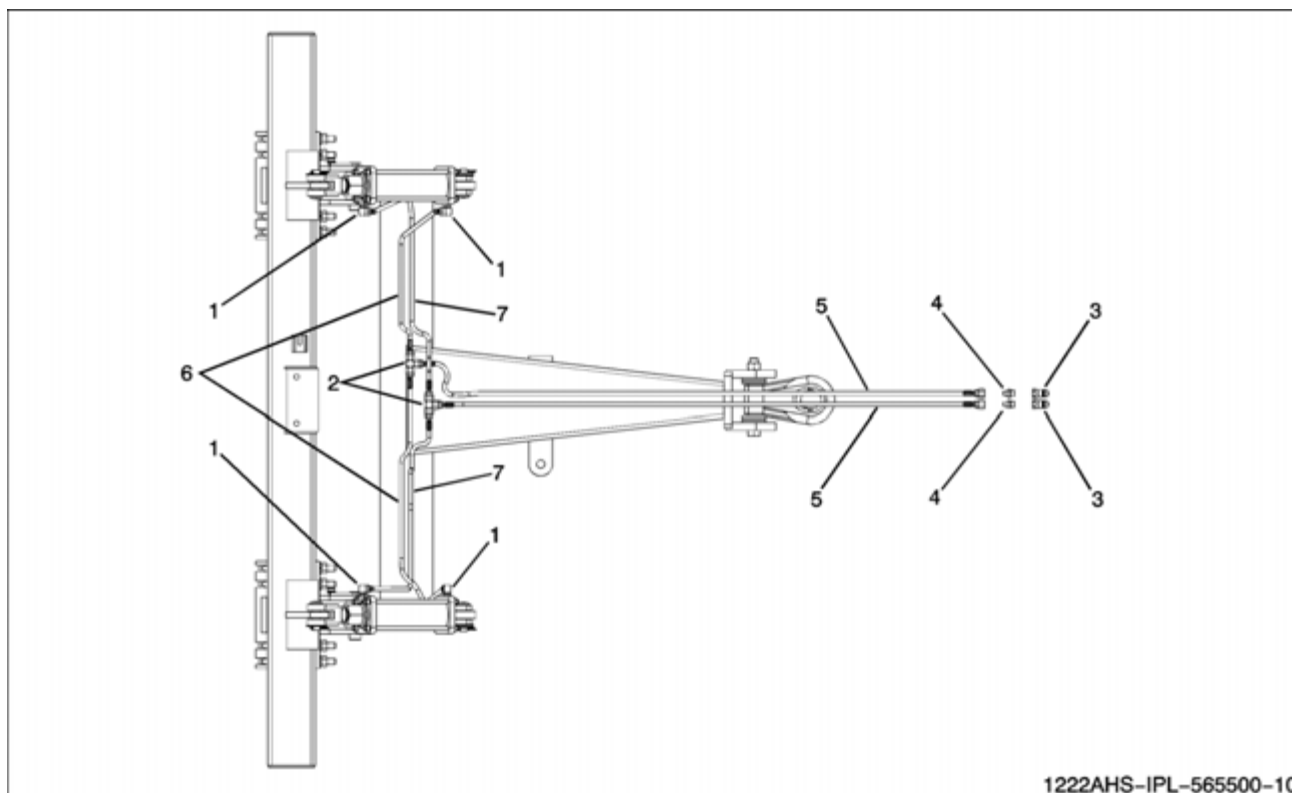
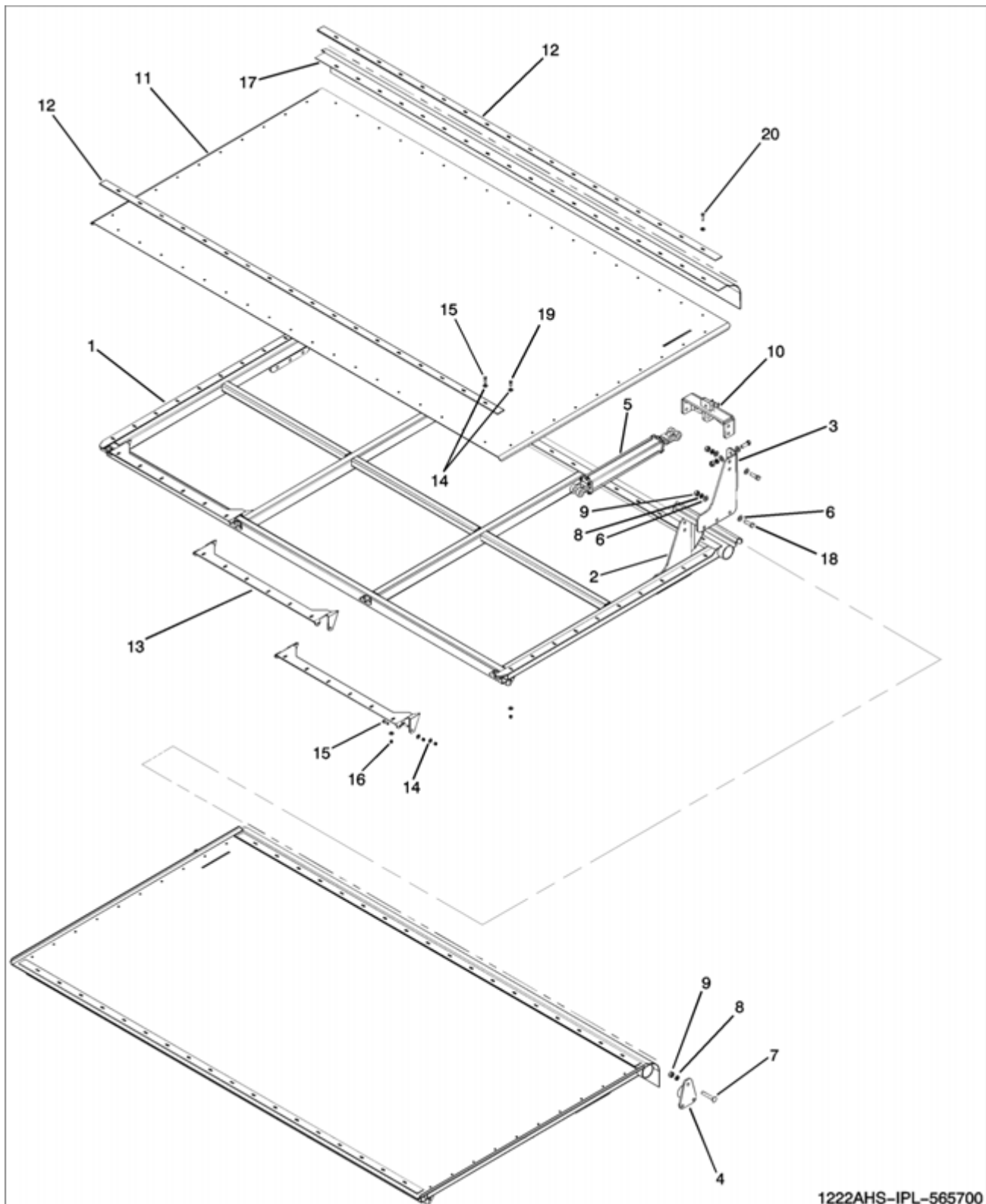
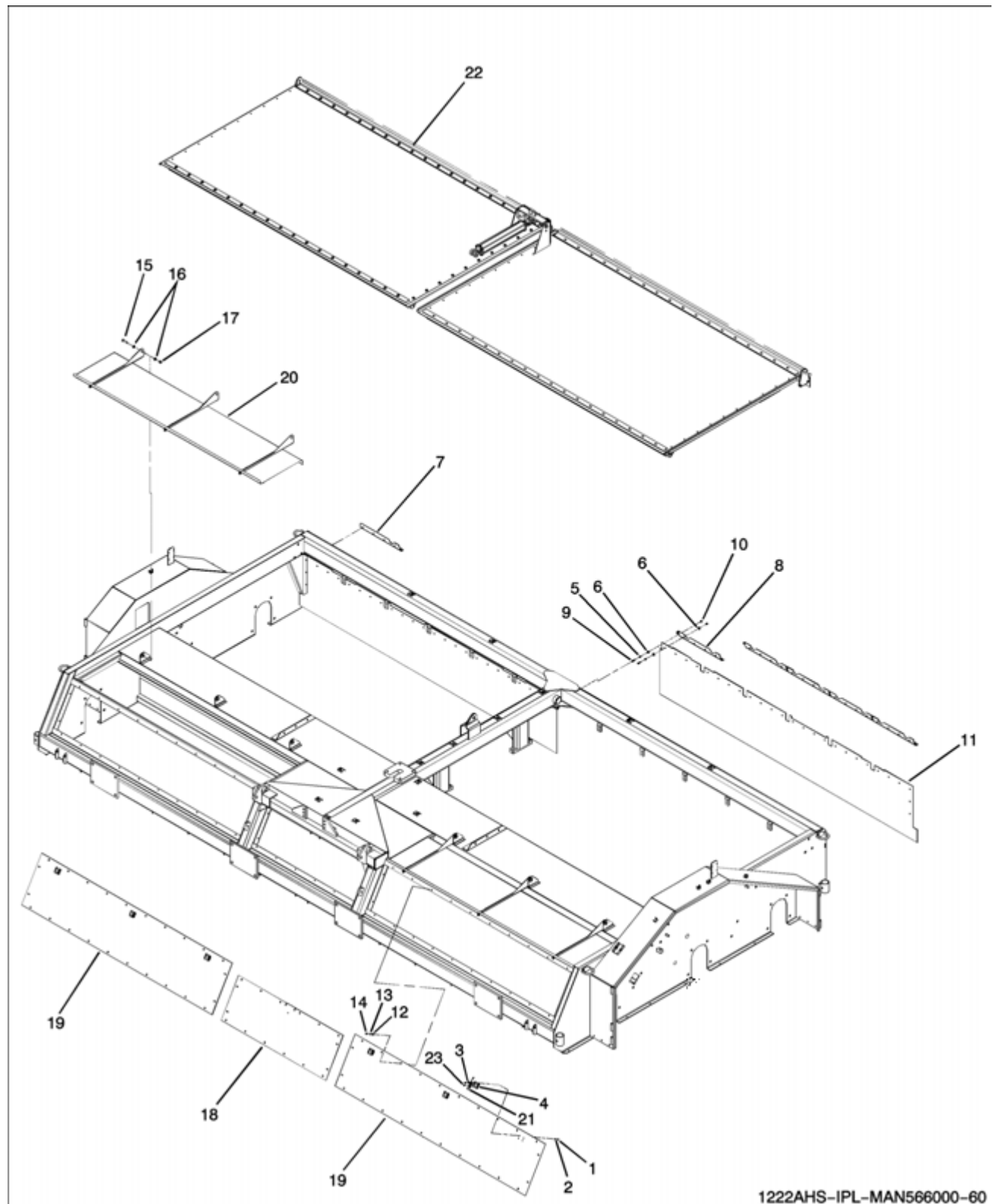
HITCH PARTS AND HYDRAULICS

FIG ITEM	PART NUMBER	NOMENCLATURE	UNITS PER ASSY
	565500-10	HITCH PARTS AND HYDRAULICS	RF
1	505780	FTG HYD 8MB-8MJT	4
2	505820	TEE, UNION -6 MJIC	2
3	I1285718C2	COUPLER, HYD	2
4	506200	ADPATER, STRAIGHT	2
5	553040	HOUSE ASSY, HYD 3/8 X 126 INCH 6F JIC X 6F JIC	2
6	553020	HOUSE ASSY, HYD 3/8 X 56 INCH	2
7	553030	HOUSE ASSY, HYD 3/8 X 68. INCH	2

REAR DOOR ASSEMBLY

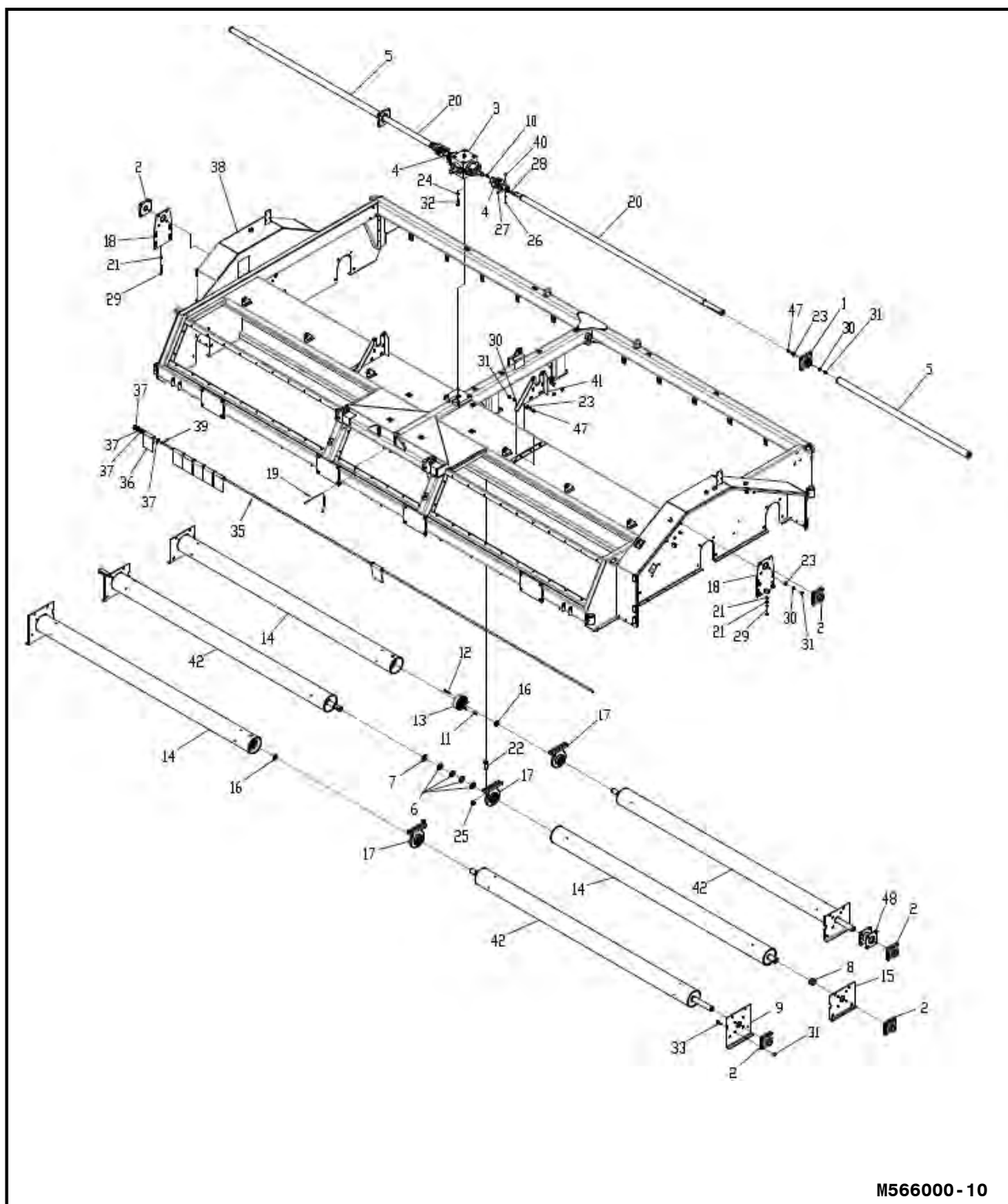
REAR DOOR ASSY

FIG ITEM	PART NUMBER	NOMENCLATURE	UNITS PER ASSY
	565700	REAR DOOR ASSY	RF
1	566800	REAR DOOR WLDT.	2
2	566340	BRACE, DOOR	2
3	566330	BRACE, DOOR	1
4	566900	PIVOT WLDT	2
5	567000	CYLINDER, HYDRAULIC 2.50"B	1
6	035210	FW 0.625	28
7	056720	HHCS 5/8-11 X 4.0 GR5 ZN	6
8	020440	WASHER, LOCK 5/8	4
9	I124589	H-NUT 0.6250-11-D-ZN	20
10	566300	MOUNT WLDT, CYLINDER	1
11	566890	TOP COVER, REAR	2
12	566821	BAR, TOP	4
13	566880	TENSION COVER	6
14	021190	WASHER, FLAT 3/8 STD 7/16 X 1 X 5/64 ZN	224
15	006690	H-BOLT 0.3750-16 X 1.25 X 1.25 N	60
16	073630	NUT, LOCK 3/8-16	136
17	567280	COVER, REAR HINGE	2
18	990620	BOLT, HHCS 5/8-11 X 2	14
19	012260	H-BOLT 0.3750-16 X 1 X 1-N	40
20	011370	H-BOLT 0.3750-16 X 1.5 X 1.5-N	36
21	567610	CYLINDER STOP 20.00	1
22	143710	PIN, SNAPPER	1

1222A HS MAIN ASSEMBLY

MAIN ASSEMBLY

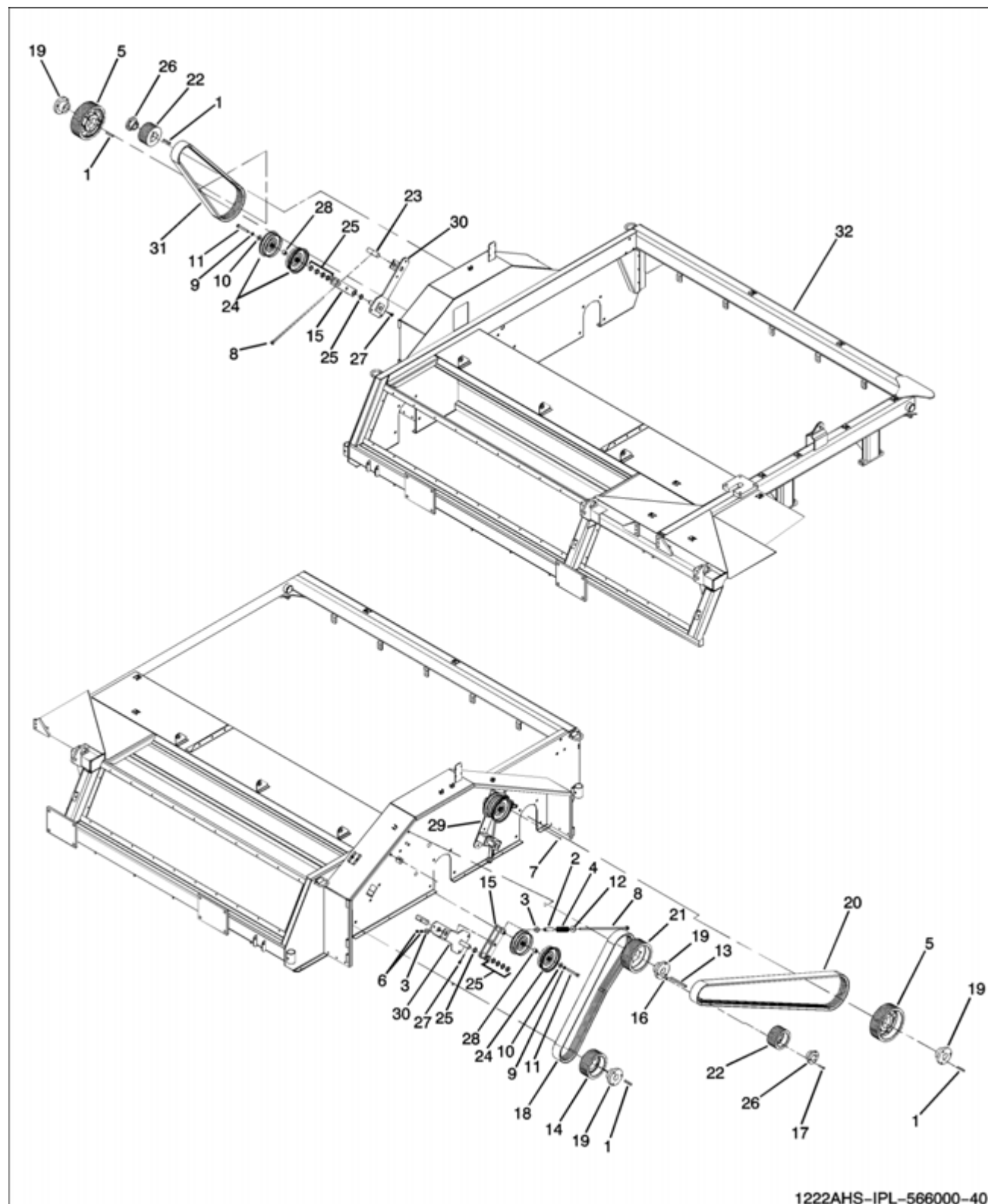
FIG ITEM	PART NUMBER	NOMENCLATURE	UNITS PER ASSY
	MAN566000-60	MAIN ASSEMBLY	RF
1	027660	H-NUT 0.2500-20-D-N	24
2	029440	LW 0.25	24
3	029450	BOLT, HHCS 1/4-20 X 1 1/2	24
4	566280	MOUNT, LATCH	6
5	021180	LW 0.375	32
6	021190	WASHER, FLAT 3/8 STD 7/16 X 1 X 5/64 ZN	64
7	567040	ANGLE, FORMED	1
8	567030	ANGLE, FORMED	10
9	012260	H-BOLT 0.3750-16 X 1 X 1-N	32
10	027260	H-NUT 0.3750-16-GR5 ZN	32
11	567050	COVER, REAR	2
12	022920	FW 0.3125	64
13	023620	WASHER, LOCK 0.31 ZN	64
14	012140	H-BOLT 0.3125-18 X 1 X 0.75-N	64
15	023950	BOLT, HHCS 1/2-13 X 2 GR5 ZN	6
16	I120396	WASHER, FLAT 0.53 X 1.06 X 0.074	12
17	037540	NUT, LOCK 1/2 13 GR5 ZN NYLON	6
18	566270	SHEET, FRONT INNER	1
19	566260	SHEET, FRONT OUTER	2
20	565910	COVER WLDT, FRONT	2
21	566290	LATCH, DRAW	6
22	565700	REAR DOOR ASSY	1
23	1070819	RIVER 3/16	12

ROTOR ASSY

ROTOR ASSY

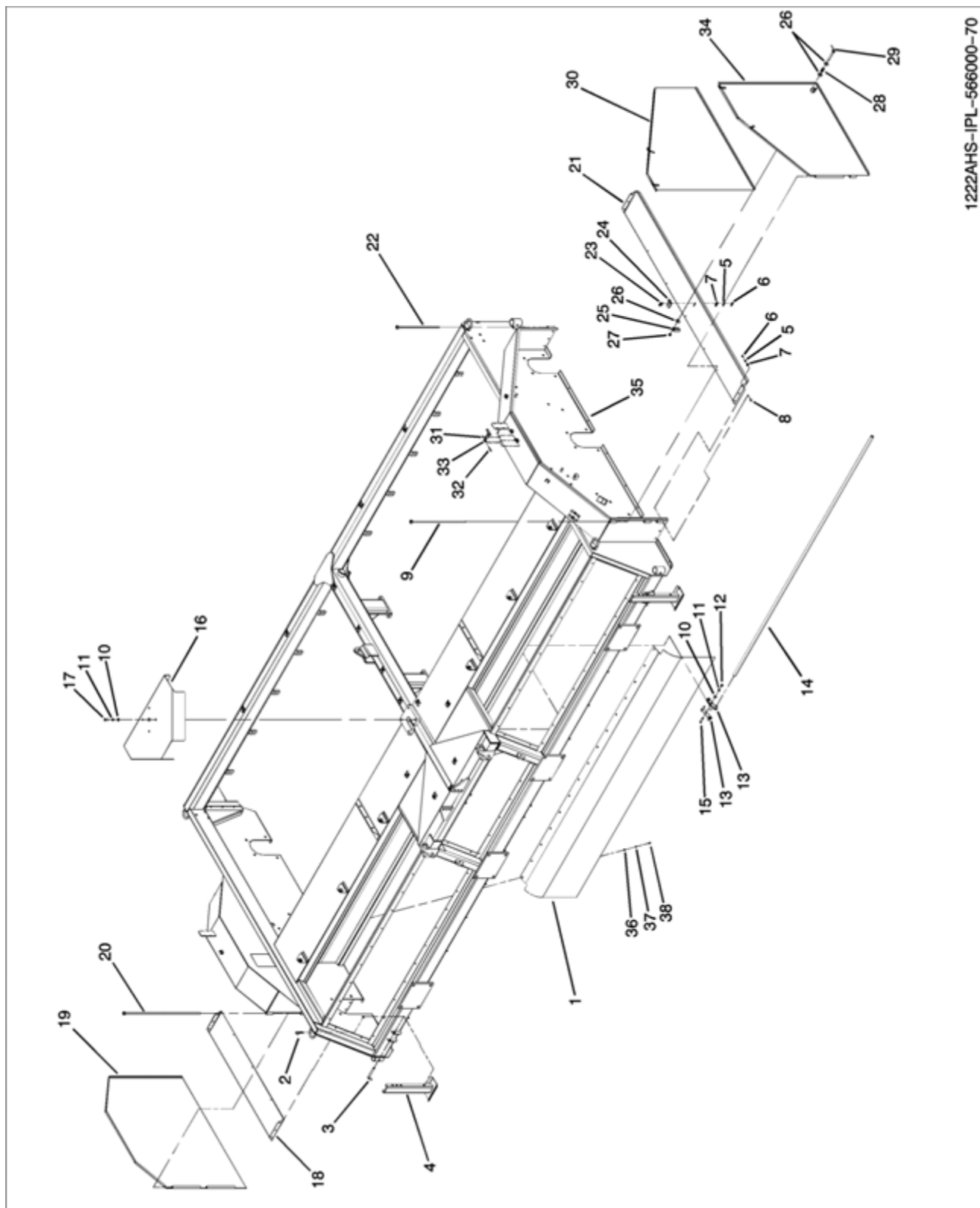
FIG ITEM	PART NUMBER	NOMENCLATURE	UNITS PER ASSY
	566000-10	ROTOR ASSY	RF
1	565950	BEARING, 2-3/8	2
2	R66250	BEARING, FLG 2.18"	8
3	552150	GEARBOX, 1:1.35 RATIO	1
4	286520	U-JOINT, 1-3/4 RB X 1-3/4 RB	2
5	566920	SPIN SLEEVE	2
6	I21719R1	WASHER, 2.0 X 2.75	27
7	I21787R1	WASHER, 2 X 16 GA	9
8	567330	BUSHING, SPACER	6
9	535410	PLATE, BEARING	2
10	006670	KEY, SQUARE 3/8 X 1-1/2	2
11	477730	1/2" SQ X 1.88" L	2
12	537060	BOLT, SHCS 3/8-16 X 2.75 X 1.25	18
13	552790	COUPLING ASSY	3
14	536150	ROTOR WLDT (REF ONLY)	3
15	420790	PLATE, BEARING	4
16	552860	SNAP RING, 2.00"	3
17	552840	HOLDER & CTR BRG ASSY	3
18	556890	ADJUSTMENT WLDT	2
19	458420	TUBING, STEEL 0.25 OD	22
20	566230	SHAFT, OUTPUT	2
21	005360	NUT, HEX 1/2-13	6
22	R66338	H-BOLT 1.0000-8 X 3 X 3-N	6
23	035210	FW 0.625	28
24	005370	WASHER, LOCK 1/2 ZN	4
25	990510	NUT, LOCK 1-8 HEX	6
26	I189304	BOLT, HHCS 3/8-16 X 3-1/4	2
27	120970	SHSS 3/8-16 X 1/2 CUP POINT	2
28	167920	KEY, SQ 3/8 X 2-1/2	2
29	I485555R1	H-BOLT 0.5000-13 X 4.25 X 4.25-N	2
30	020440	WASHER, LOCK 5/8	70
31	I124589	H-NUT 0.6250-11-D-ZN	70
32	007080	H-BOLT 0.5000-13 X 2.5 X 1.25-N	4
33	287880	RHSSN BOLT 0.625-11 X 2 X 1.5-N	32
34	250140	BOLT, CRG 5/8-11 X 1-1/2 GR5 ZN	24
35	422940	ROD, SKIRT 1222	2
36	183330	DEFLECTOR, RUBBER CURTAIN	43
37	020430	WASHER, FLAT 5/8 STD	62
38	565650	FRAME WLDT 1222A HS	1
39	124350	PIN, COTTER 1/8 X 1-1/2 ZN	4
40	I9411655	NYLON INSERT LOCKNUT, 3/8-16 UNC	2
41	565930	SUPPORT, BEARING	2
42	425090	ROTOR WLDT	3
-43	115590	FITTING 1/4-28 STRAIGHT SELF TAPPING ZN (NOT SHOWN)	2
-44	458410	ELBOW, 45 DEG COMP 1/4 OD X 1/8 NPT (NOT SHOWN)	1
-45	244260	CONNECTOR, TUBE 1/8 NPT TO 1/4 (NOT SHOWN)	1
-46	013170	FITTING, 1/8-27 NPT STRAIGHT-SHORT ZN (NOT SHOWN)	1
47	990620	HHCS 5/8-11 X 2.0 GR5 ZN	14
48	581240	Extension, Brg. Wldt	1

DRIVE ASSY



DRIVE ASSY

FIG ITEM	PART NUMBER	NOMENCLATURE	UNITS PER ASSY
	566000-40	DRIVE ASSY	RF
1	E388049	KEY, SQUARE 1/2 X 3	4
2	239040	SPACER, SPRING	3
3	268560	WASHER, FLAT 17/32 X 1-3/4 X 1/4 ZN	6
4	231000	SPRING, COMPRESSION	3
5	421960	SHEAVE, 5 GROOVE 12.3	2
6	005360	NUT, HEX 1/2 - 13	8
7	115590	FITTING, GREASE	6
8	567010	ROD WLDT	3
9	020440	WASHER, LOCK 5/8	40
10	020430	WASHER, FLAT 5/8 STD	3
11	028330	BOLT, HHCS 5/8-11	3
12	I486801R1	WASHER, 0.531 X 2	3
13	424010	KEY, SQUARE 1/2 X 7.25	1
14	552900	SHEAVE, 5 GROOVE 9.15 PD	1
15	567260	ARM WLDT, IDLER	3
16	021180	LW 0.375	6
17	037790	H-BOLT 0.3750-16 X 2 X 2-N	6
18	567250	BELT, 5V5 110.0" L	1
19	225700	BUSHING, SPLIT TAPER	4
20	552850	BELT, 5V 5GR 170.0" L	1
21	522140	SHEAVE, 5 GROOVE 10.9	1
22	522150	SHEAVE, 5 GROOVE 7.10	2
23	422110	SHAFT, LOWER PIVOT	3
24	566250	PULLEY, IDLER HALF	6
25	020880	WASHER, FLAT	20
26	R66251	BUSHING, QD, TYPE SF	2
27	114370	1/4 X 2 COTTER PIN	3
28	566780	BUSHING, IDLER	3
29	566760	ARM WLDT, IDLER	1
30	566750	ARM WLDT, IDLER	2
31	552890	BELT, 5 GROOVE 106L	1
32	565650	FRAME WLDT, 1222A HS (REF ONLY)	1
-33	115590	FITTING, 1/4-28, 90 DEG SELF TAPPING (NOT SHOWN)	6
-34	I19612R91	FITTING, 1/4-28, 90 DEG (NOT SHOWN)	3

SHIELDS, HOUSING, AND DOORS

1222AHS-IPL-566000-70

SHIELDS, HOUSING, AND DOORS

FIG ITEM	PART NUMBER	NOMENCLATURE	UNITS PER ASSY
	566000-70	SHIELDS, HOUSING, AND DOORS	RF
1	567070	DEFLECTOR, POLY	2
2	035830	PIN, COTTER 3/16 X 1-1/2 ZN	2
3	566240	PIN, STAND	2
4	565990	STAND WLDT	2
5	021180	LW 0.375	56
6	027260	H-NUT 0.3750-16-GR5 ZN	56
7	021190	WASHER, FLAT 3/8 STD 7/16 X 1 X 5/64 ZN	56
8	170530	BOLT, CRG 3/8-16 X 1 SSN GR5 ZN	12
9	567220	PIN WLDT, DOOR RH	1
10	005200	WASHER, FLAT 1/2 STD	6
11	005370	WASHER, LOCK 1/2 ZN	6
12	005360	NUT, HEX 1/2-13	2
13	567100	MOUNT, DEFLECT	2
14	567090	TUBE, SUPPORT	2
15	023950	BOLT, HHCS 1/2-13 X 2 GR5 ZN	2
16	565940	SHIELD, GEARBOX	1
17	010730	H-BOLT 1/2-13 X 1.25" GR5 ZN	4
18	567120	SHIELD, LOWER	1
19	567150	DOOR WLDT, RH	1
20	567200	PIN WLDT, DOOR	1
21	567110	SHIELD, LOWER	1
22	518710	PIN WLDT, DOOR	1
23	012260	H-BOLT 0.3750-16 X 1 X 1-N	44
24	565711	ANGLE, FORMED	1
25	518850	LATCH WLDT, DOOR	1
26	020430	WASHER, FLAT 5/8 STD	62
27	V062140	NUT, JAM 5/8-11 HEX ZN GR5	1
28	518900	SPRING, COMP	1
29	518840	HANDLE WLDT, DOOR	1
30	567140	DOOR WLDT, LH	1
31	037550	NYLON INSERT LOCKNUT, 1/4-20 UNC	7
32	223540	H-BOLT 0.2500-20 X 1.75 X 1.75-N	7
33	E504003	LATCH, RUBBER	7
34	567130	DOOR WLDT, LH	1
35	565650	FRAME WLDT, 1222A HS (REF ONLY)	1
36	022920	FW 0.3125	30
37	023620	WASHER, LOCK 0.31 ZN	30
38	012140	H-BOLT 0.3125-18 X 1 X 0.75-N	30

**THIS PAGE
LEFT
INTENTIONALLY
BLANK**

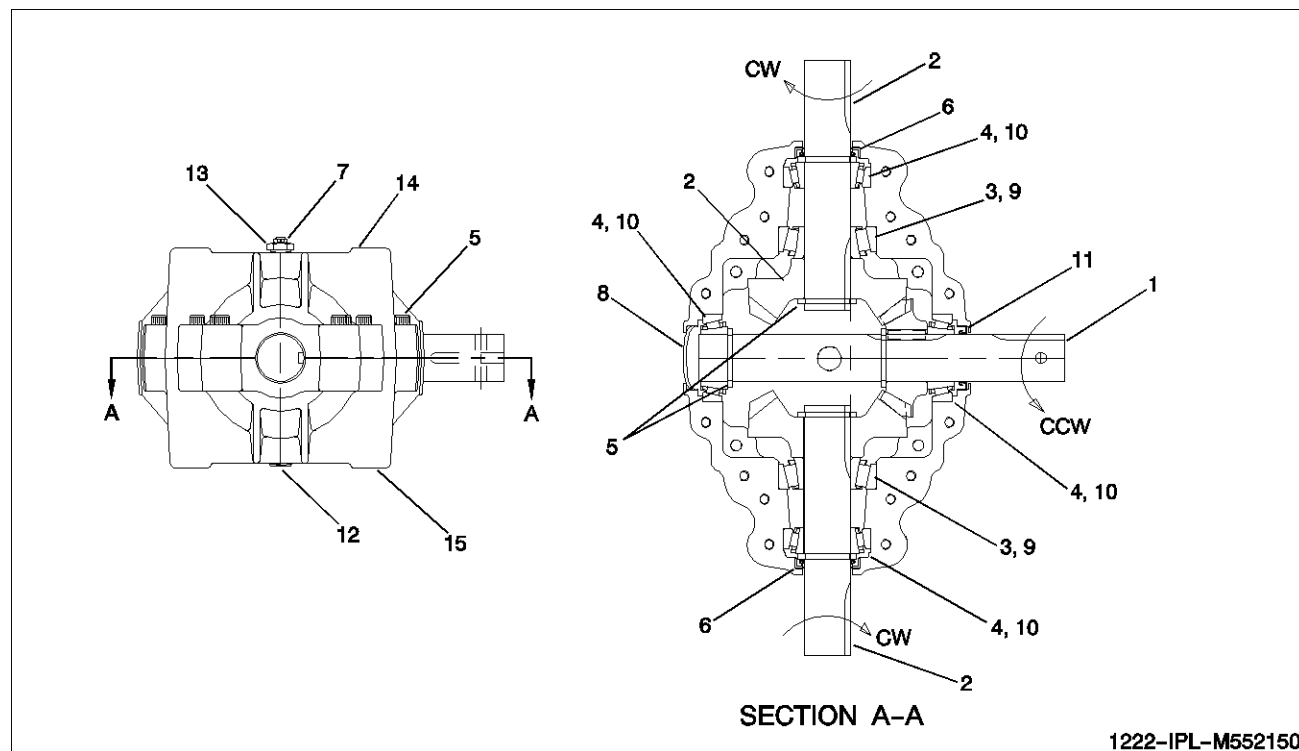
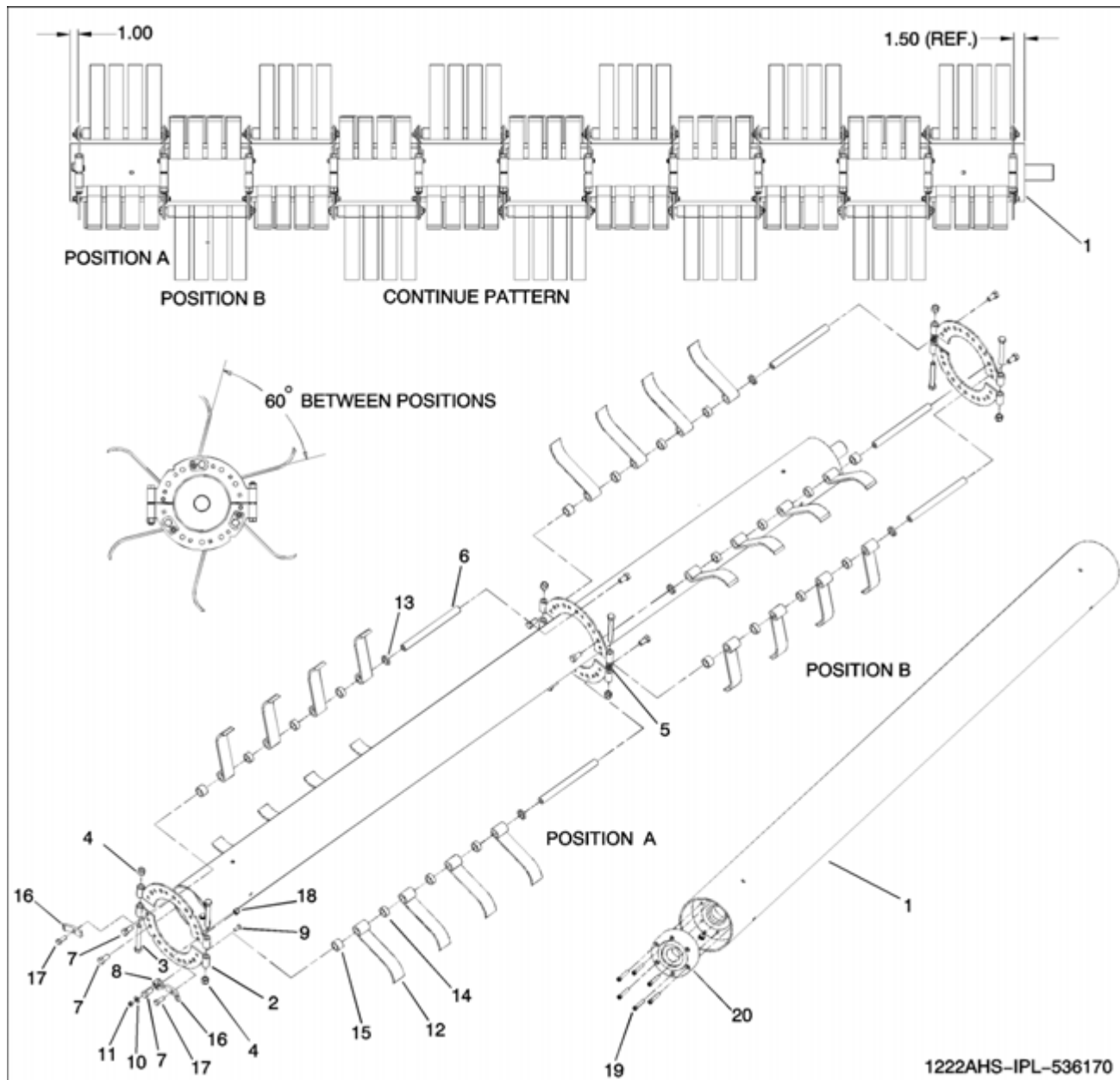
GEARBOX ASSEMBLY

FIG ITEM	PART NUMBER	NOMENCLATURE	UNITS PER ASSY
	552150	GEARBOX ASSEMBLY	RF
1	556420P	GEAR, 20 TOOTH, CROSS SHAFT	1
2	556430P	GEAR, 27 TOOTH, STUB SHAFT	2
3	247730P	BEARING, HUB	2
4	247680P	CONE, BEARING	4
5	247830P	BOLT, 3/8-16 X 2-1/4 GR8	16
6	247670P	BEARING, 1-1/4 INCH BORE	2
7	247820P	PLUG, PRESSURE RELIEF	1
8	247840P	PLUG, END	1
9	E072317P	CUP, BEARING	2
10	247690P	CUP, BEARING	4
11	247660P	SEAL, OIL	3
12	247750P	PLUG, 1/2 NPT	1
13	247810P	BUSHING, 1/2 NPT TO 1/8 NPT	1
14	556410P	CASTING, TOP	1
15	556400P	CASTING, BOTTOM	1
-16	556440P	BEARING, CONE 22580 (NOT SHOWN)	1

ROTOR ASSY – STEEL, DRIVEN

1222AHS-IPL-536170

FIG ITEM	PART NUMBER	NOMENCLATURE	UNITS PER ASSY
	536170	ROTOR ASSY, STEEL, DRIVEN	RF
-1	536150	ROTOR WLDT.	1
2	537030	BRACKET WLDT.	6
3	031490	HEX BOLT 0.6250-11 X 5 X 5-N	6
4	I19508R1	NUT, LOCK 5/8-11	6
5	452870	WASHER, FLAT 21/32 X 1 X 1/8 ZN	4
6	394280	PIN, ROD	6
7	990600	HHCS 5/8-11 X 1-1/4 GR5 ZN	11
8	510450	PLATE, BOLT RETAINER	1
9	170530	BOLT, CRG 3/8-16 X 1 SSN GR5 ZN	1
10	021190	WASHER, FLAT 3/8 STD 7/16 X 1 5/64 ZN	1
11	073630	NUT, LOCK 3/8-16	1
12	U50800004	KNIFE, 9-1/2 W/1" EYE	24
13	R41660	SPACER, BLADE	6
14	394290	SPACER	18
15	278970	SLEEVE, PIVOT	6
16	537040	BRACKET, CLUSTER	2
17	010730	H BOLT 1/2-13 X 1.25 GR5 ZN	2
18	037540	NUT, LOCK 1/2-13 GR5 ZN NYLON	2
19	537060	BOLT, SHCS 3/8-16 X 2.75 X 1.25	6
20	552790	COUPLING ASSY	1

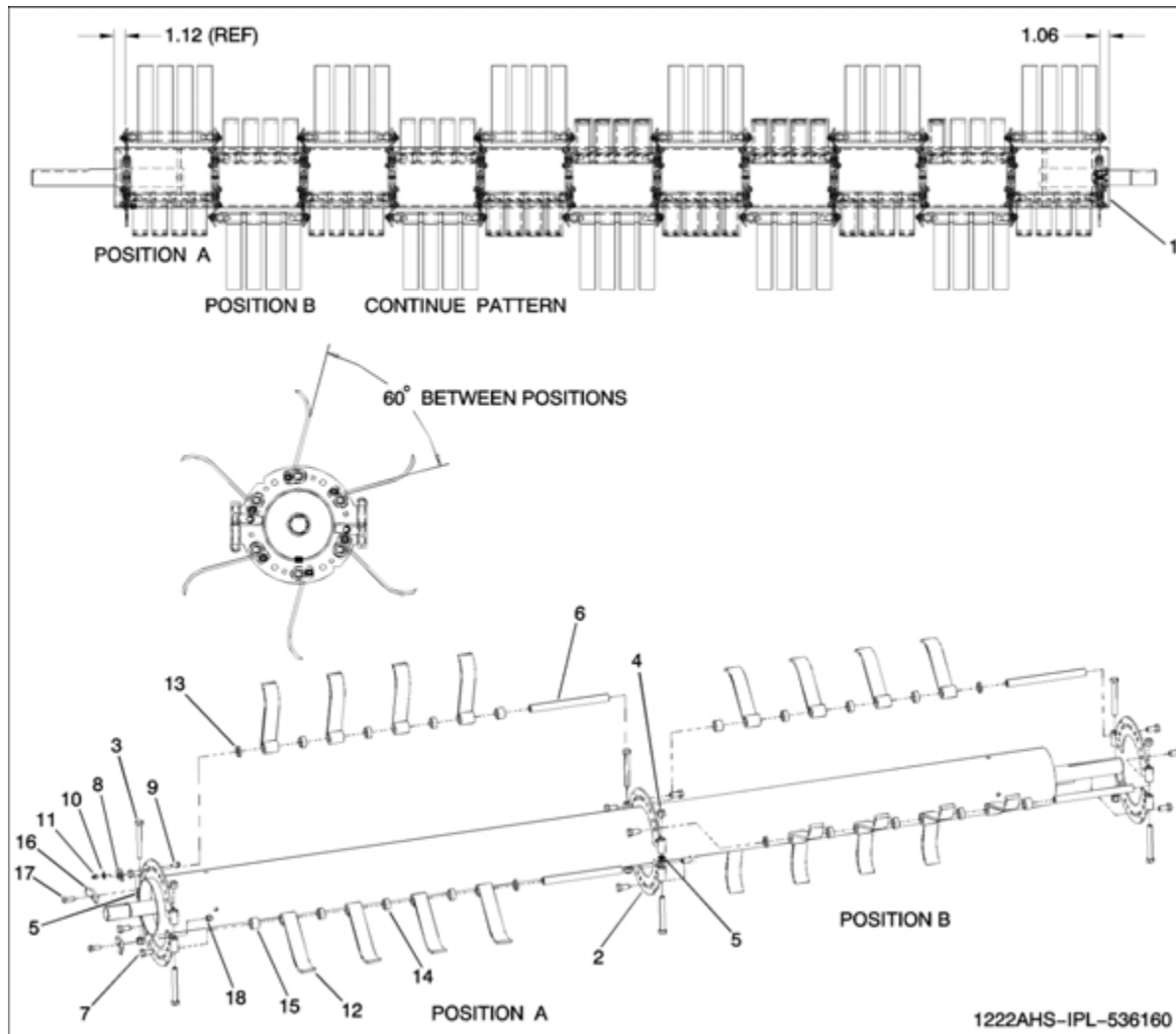
ROTOR ASSY – STEEL DRIVER

FIG ITEM	PART NUMBER	NOMENCLATURE	UNITS PER ASSY
	536160	ROTOR ASSY – STEEL DRIVER	RF
1	425090	ROTOR WLDT.	1
2	537030	BRACKET WLDT.	24
3	031490	HEX BOLT 0.6250-11 X 5 X 5-N	24
4	I19508R1	NYLON INSERT LOCKNUT, 5/8-11 UNC	24
5	452870	WASHER, FLAT 21/32 X 1 X 1/8 ZN	24
6	394280	PIN, RND	33
7	990600	HHCS 5/8-11 X 1-1/4 GR5 ZN	66
8	510450	PLATE, BOLT RETAINER	66
9	170530	BOLT, CRG 3/8-16 X 1 SSN GR5 ZN	66
10	021190	WASHER, FLAT 3/8 STD. 7/16 X 1 X 5/64 ZN	66
11	073630	NUT, LOCK 3/8-16	66
12	U50800004	KNIFE, 9-1/2 INCH	132
13	R41660	SPACER, BLADE	33
14	394290	SPACER	132
15	278970	SLEEVE, PIVOT	33
16	537040	BRACKET, CLUSTER	2
17	010730	HEX BOLT 1/2-13 X 1.25 INCH GR5 ZN	2
18	037540	NUT, LOCK 1/2-13 GR5 ZN NYLON	2

**THIS PAGE
LEFT
INTENTIONALLY
BLANK**

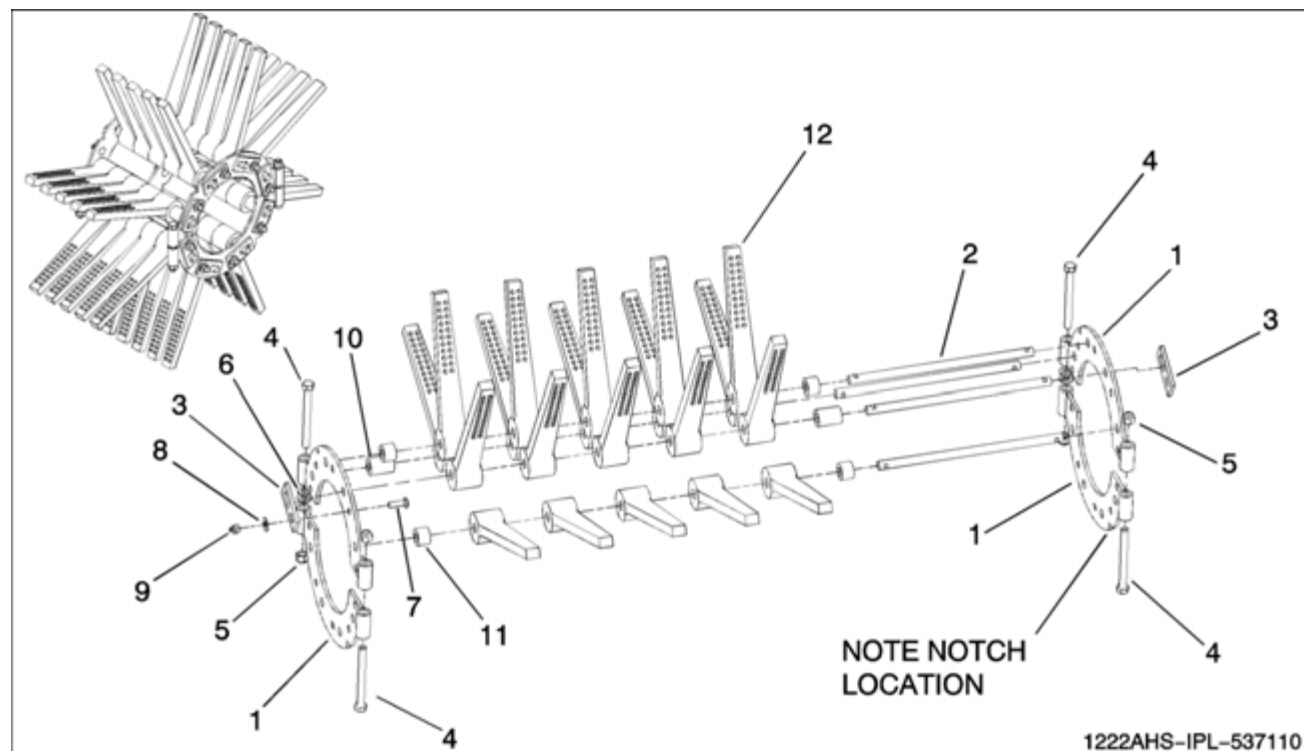
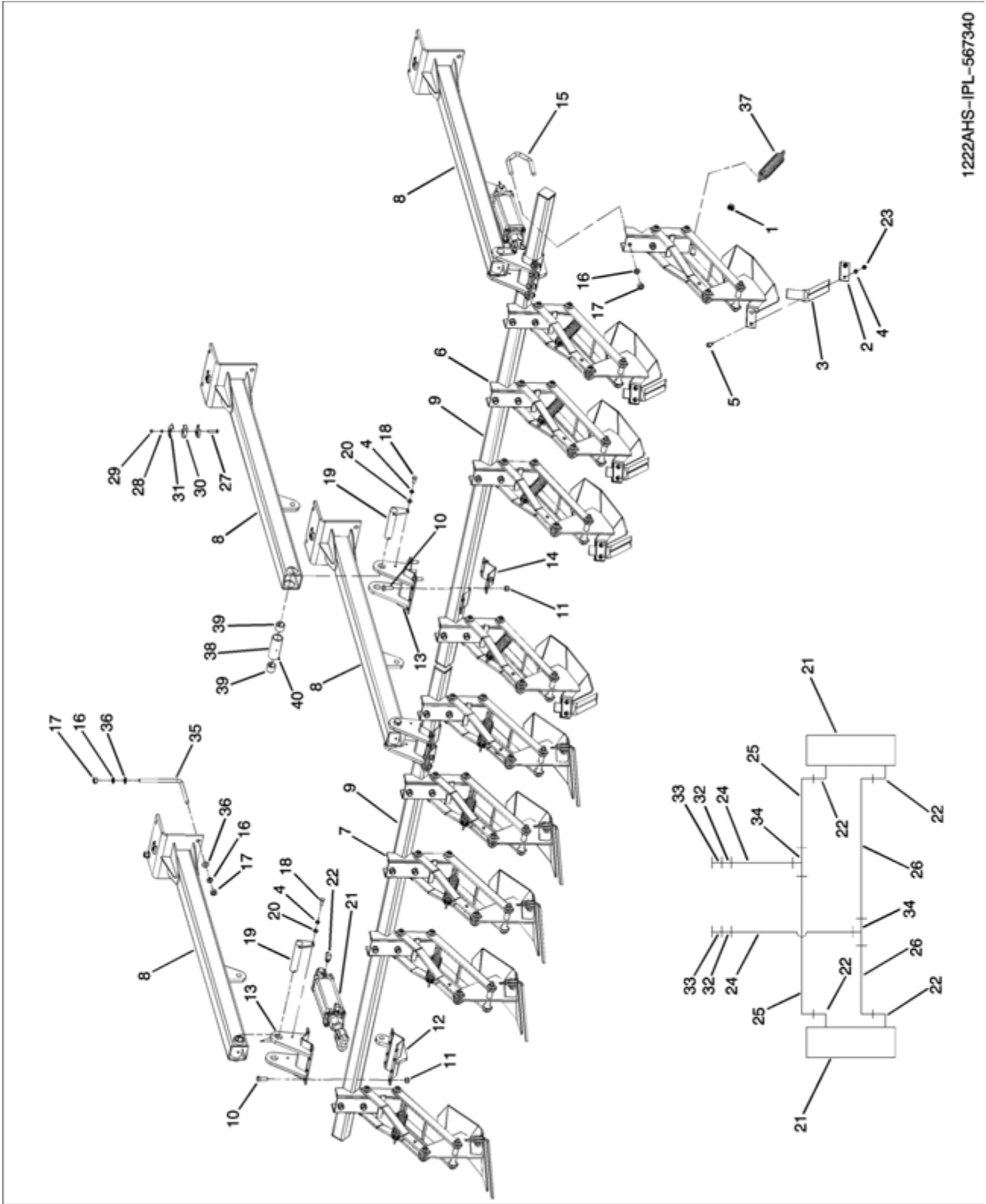
CLUSTER ASSY – RUBBER 8 PIN

FIG ITEM	PART NUMBER	NOMENCLATURE	UNITS PER ASSY
	537110	CLUSTER ASSY – RUBBER 8 PIN	RF
1	536070	BRACKET WLDT.	4
2	383010	PIN, FLAIL 5/8 INCH X 12.0	8
3	383000	STRAP, PIN CLUSTER	16
4	160350	HEX BOLT, 1/2-13 X 5.00 GR5 ZN	4
5	037540	NUT, LOCK 1/2-13 GR5 ZN NYLON	4
6	469370	WASHER, DEFOILATOR ROTOR	4
7	035180	RHSSN BOLT 0.375-16 X 1.25 X 1.25-N	16
8	021190	WASHER, FLAT 3/8 STD. 7/16 X 1 X 5/64 ZN	16
9	073630	NUT, LOCK 3/8-16	16
10	E724312	SPACER, RUBBER 1.75	4
11	E724311	SPACER, RUBBER 0.88	8
12	E278029	FLAIL, RUBBER	40

FIXED CARRIER WHEELS

FIG ITEM	PART NUMBER	NOMENCLATURE	UNITS PER ASSY
	566500	WHEEL ASSY, TANDEM WALKING 1222A HS	RF
1	566690	SPINDLE, WHEEL	4
2	539780	TIRE & WHEEL, RH	2
3	539770	TIRE & WHEEL, LH	2
4	566450	CYL, HYD 3.5"B X 8.0"	2
5	537610	BUSHING, TENSION	8
6	535790	CLEVIS PIN WLDT	2
7	403860	BOLT, "L"	8
8	I131017	FW 0.812	16
9	036800	LW 3/4" SAE MED	16
10	J14H794	NUT, HEX 3/4-10 GR5 ZN	16
11	005200	FW 0.5	4
13	010730	H-BOLT 1/2-13 X 1.25" GR5 ZN	4
14	566700	PIN WLDT	2
15	340300	H-BOLT 0.5000-13 X 4.25 X 4.25-N	4
16	TG0760	HUB ASSEMBLY	2
17	566400	MOUNT WLDT, REAR	2
18	566480	SUPPORT WLDT, AXLE	2
19	566350	BEAM WLDT, WALKING	2
20	037540	NUT, LOCK 1/2-13 GR5 ZN NYLON	4
21	115590	FITTING, GREASE	6
22	V030620	WASHER, FLAT	4
23	129830	NUT, SLOTTED 7/8-14 GR5 ZN	4
24	026630	1/4 X 2 COTTER PIN	4
25	567600	CYLINDER STOP, 8.00	2
26	143710	PIN, SNAPPER	2
27	033430	BOLT, CRG, 3/8-16 X 3.00 GR5 ZN	12
28	527680	BAR, HOSE CLAMP	12
32	E224133	DECAL ASSY, SMV	1
33	528160	ADAPTER, STRAIGHT, 3/4ORB X 9/16JIC MALE	2
34	553500	HOSE, 3/8 X 95, 6FL X 3, 6FJX X 6FJX	2
35	564930	HOSE, HYD 3/8 X 90, 6FJX X 6FJX	2
36	506750	FITTING 9/16JIC – 9/16ORB	2
37	553050	HOSE ASSY, HYD 3/8 X 276" L	2
38	505780	FITTING, ELBOW 90 DEG. 3/4 OR 9/16 JIC	4
39	I1285718C2	COUPLER, HYD. QUICK ORB 3/4-16	2
41	563999	VALVE, DUAL FLOW	1
42	005370	WASHER, LOCK 1/2 ZN	4
43	027260	H-NUT 0.3750-16-GR5 ZN	43
44	021180	LW 0.375	44

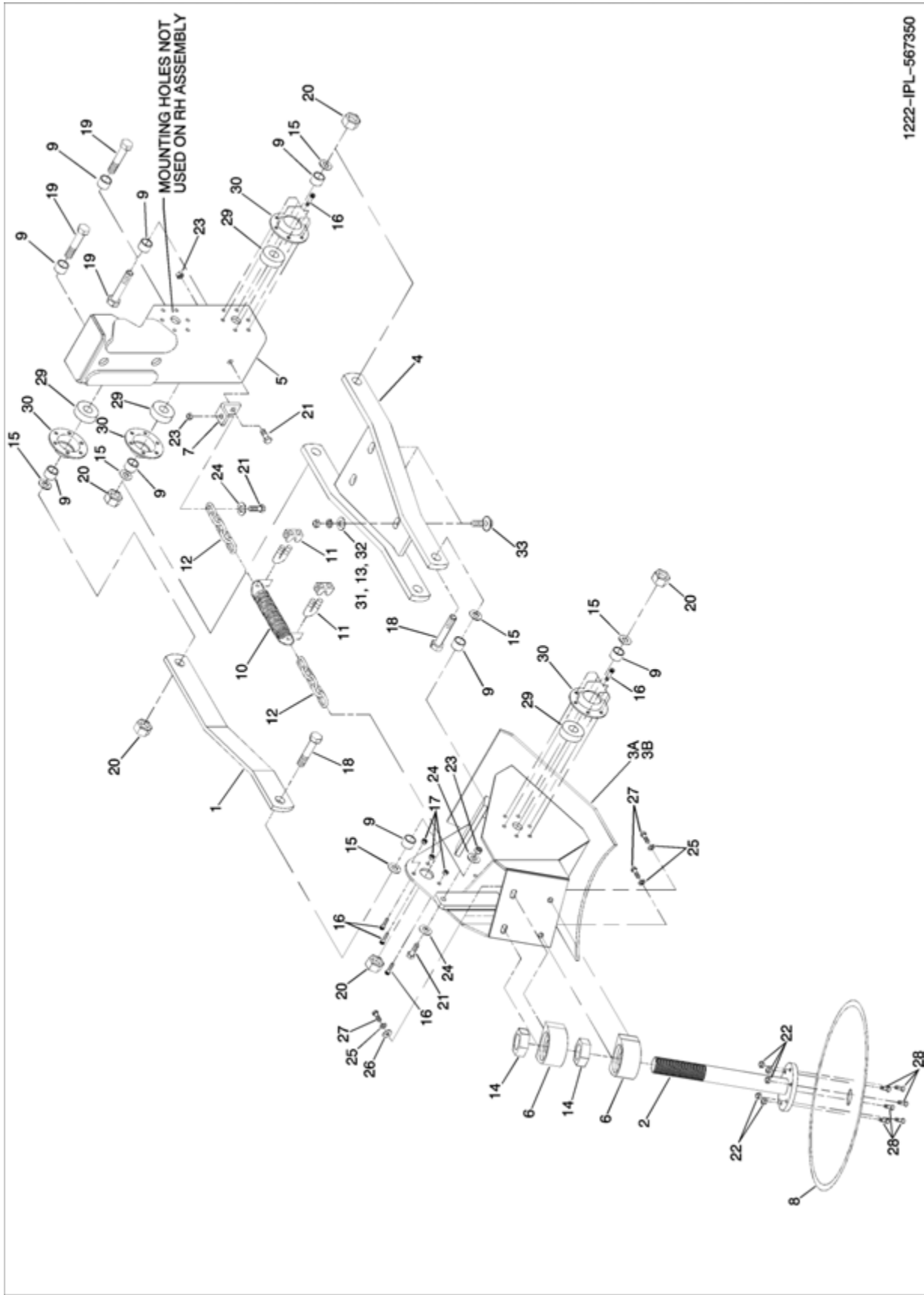
SCALPER ASSEMBLY, KNIFE



SCALPER ASSEMBLY, KNIFE

FIG ITEM	PART NUMBER	NOMENCLATURE	UNITS PER ASSY
	567340	SCALPER ASSEMBLY, KNIFE	RF
1	355340	CLIP, 1/4 WITH NUTS	12
2	E174016	CLAMP	12
3	E392001	KNIFE, SCALPER	12
4	005370	WASHER, LOCK 1/2 INCH ZN	28
5	991200	RHSN BOLT 0.5-13 X 2 X 2-N	24
6	552350	SCALPER ASSY, RH	6
7	552340	SCALPER ASSY, LH	6
8	567400	MOUNT WLDT, SCALPER	4
9	535580	TOOLBAR, WLDT.	2
10	025100	HEX BOLT 0.6250-11 X 1.75 ZN	32
11	I19508R1	LOCKNUT, 5/8-11	32
12	567450	CLAMP WLDT, LWR	2
13	535010	TOP ARM CLAMP WLDT.	4
14	535070	BRACKET	4
15	E840001	U-CLAMP BOLT	12
16	036800	LW 3/4 SAE MED	40
17	J14H794	NUT, HEX 3/4-10 GR5 ZN	40
18	010730	HEX BOLT 1/2-13 X 1.25 GR5 ZN	4
19	535060	CLEVIS PIN WLDT.	4
20	005200	WASHER, FLAT 1/2 STD	4
21	566450	CYL, HYD., 3.5 INCH B X 8.0	2
22	505780	FTG HYD, 8MB-8MJT	4
23	005360	NUT, HEX 1/2 X 13	24
24	553050	HOSE ASSY, HYD 3/8 X 276L	2
25	567520	HOSE ASSY, HYD 3/8 X 15 6 6 FJIC X 6FJIC	2
26	567510	HOSE ASSY, HYD 3/8 X 16 8 6 FJIC X 6FJIC	2
27	041450	BOLT, CRG 3/8-16 X 2.00 SSN GR5 ZN	5
28	021180	LW 0.375	5
29	027260	H-NUT 0.3750-16-GR5 ZN	5
30	527700	CLAMP, HOSE	5
31	527680	BAR, HOSE CLAMP	5
32	506200	ADAPTER, STRAIGHT 3/4 ORB X 9/16 JIC	2
33	I1285718C2	COUPLER, HYD	2
34	505820	TEE, UNION -6 MJIC	2
35	403860	BOLT, L	8
36	I131017	FW 0.812	64
37	E738016	SPRING 0.25"	12

DISK SCALPER ASSY, LH AND RH



1222-IPL-567350

DISK SCALPER ASSY, LH AND RH

Fig Item	Part Number	Nomenclature	Units Per Assy
	510410 510420	DISK SCALPER ASSY, LH (DETAIL PARTS ITEM 1 THRU ITEM 33) DISK SCALPER ASSY, RH (DETAIL PARTS ITEM 1 THRU ITEM 33)	RF RF
1	510250	BAR, ARM	1
2	510330	SHAFT WLDT.	1
3A	510380	SHOE WLDT. LH (USED ON 510410 SCALPER ASSY, LH)	1
3B	510400	SHOE WLDT. RH (USED ON 510420 SCALPER ASSY, RH)	1
4	512080	CHANNEL WLDT.	1
5	510540	BRACKET WLDT.	1
6	510550	BEARING, 1-1/4 BORE	2
7	510440	ANGLE, SPRING MOUNT	1
8	510430	DISC, 14 INCH CONCAVE	1
9	512050	SPACER	10
10	E738016	SPRING, EXTENSION	1
11	335340	CLAMP, SPRING	2
12	211720	CHAIN, 5-LINS	2
13	005370	WASHER, LOCK 1/2 ZN	3
14	TG0676	NUT, 1-1/4 JAM	2
15	I131017	WASHER, FLAT, 3/4 INCH SAE	AR
16	512040	BOLT, SHCS (HEX) 5/16-18 X 3/4	36
17	181570	NUT, LOCK 5/16-18 HEX NYLON	36
18	990860	BOLT, 3/4 X 2-3/4	2
19	990830	BOLT, 3/4 X 3-1/2	4
20	1100238	NUT, 3/4 NYLOC	6
21	006690	BOLT, 3/8 X 1-1/4	3
22	037550	NUT, LOCK 1/4-20 HEX	6
23	073630	NUT, 3/8 NYLOC	3
24	021190	WASHER, 3/8 FLAT	4
25	023990	WASHER, 7/16 LOCK	4
26	P99549	WASHER, 7/16 FLAT	2
27	128000	BOLT, 7/16 X 1	4
28	042960	BOLT, 1/4 X 1	6
29	510580	BEARING, 3/4 INCH BORE	6
30	510570	HUB, BEARING HOUSING	6
31	005360	NUT, HEX 1/2-13 GR5 ZN	3
32	005200	WASHER, FLAT 1/2 STD.	3
33	E096046	BOLT, CRG 1/2-13 X 1-1/2 GR5	3

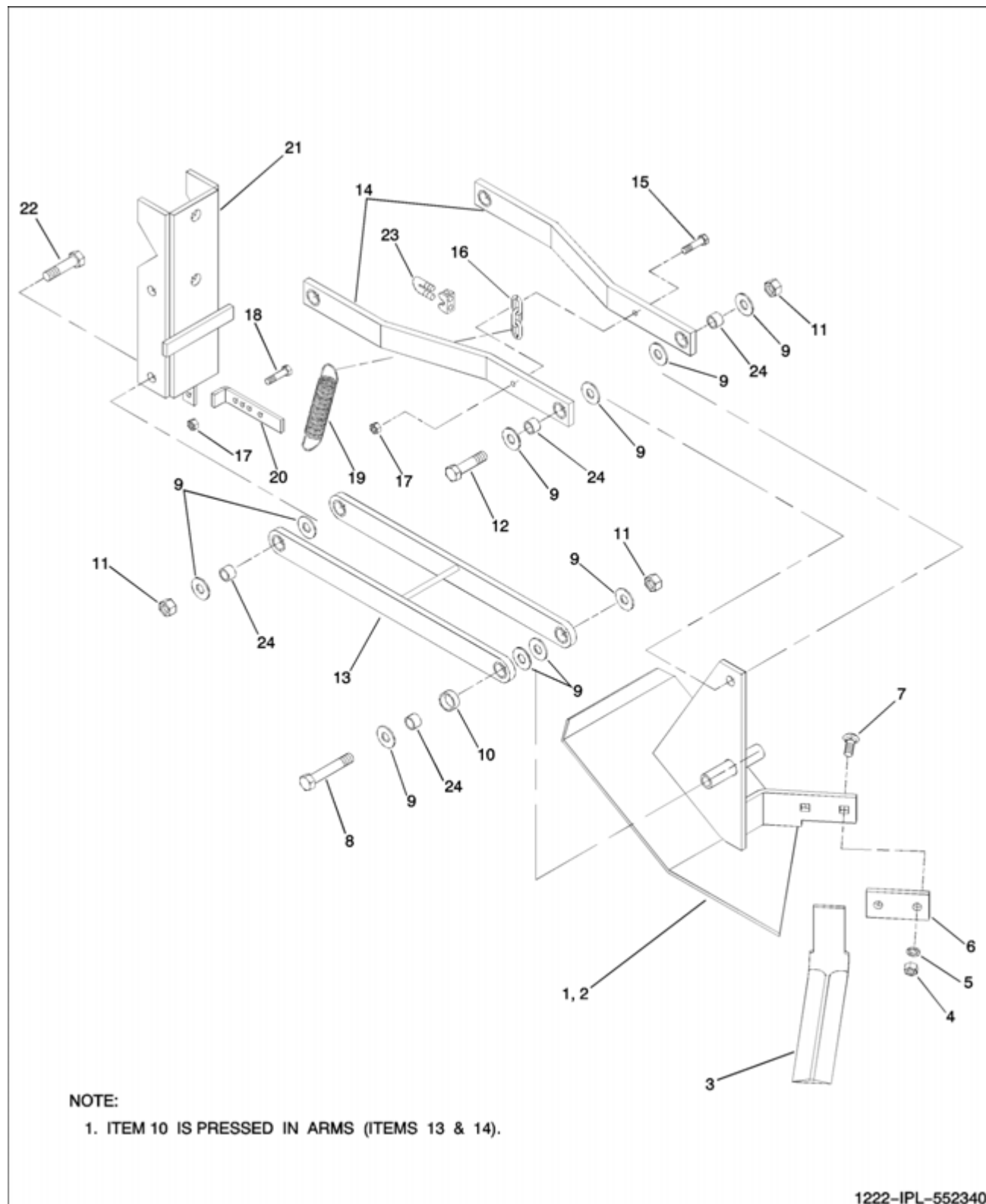
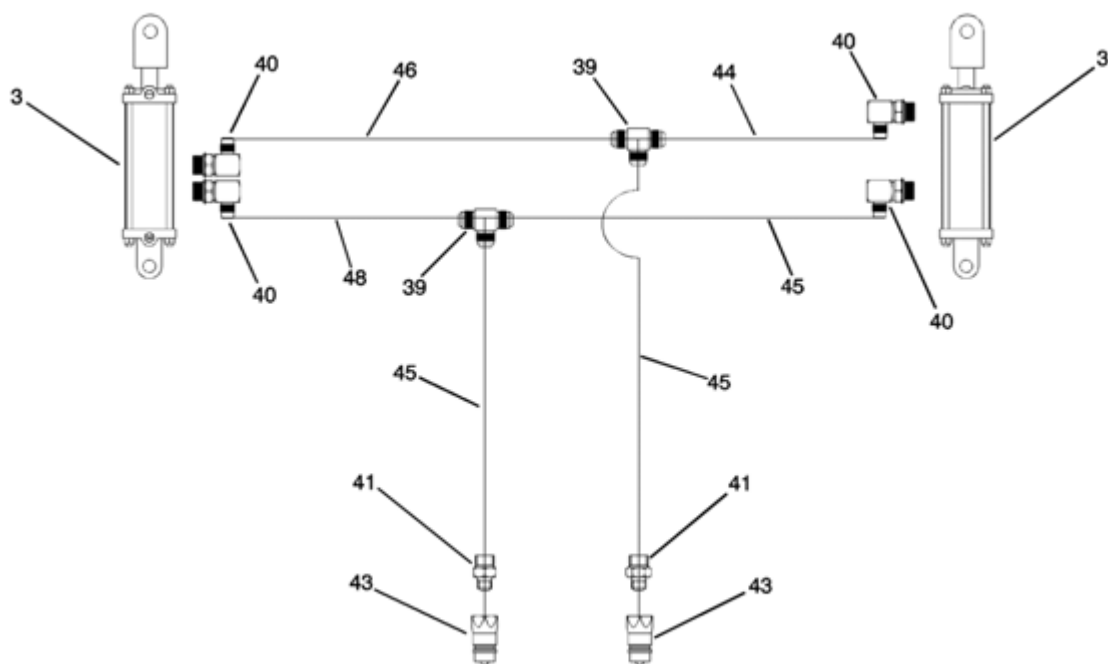
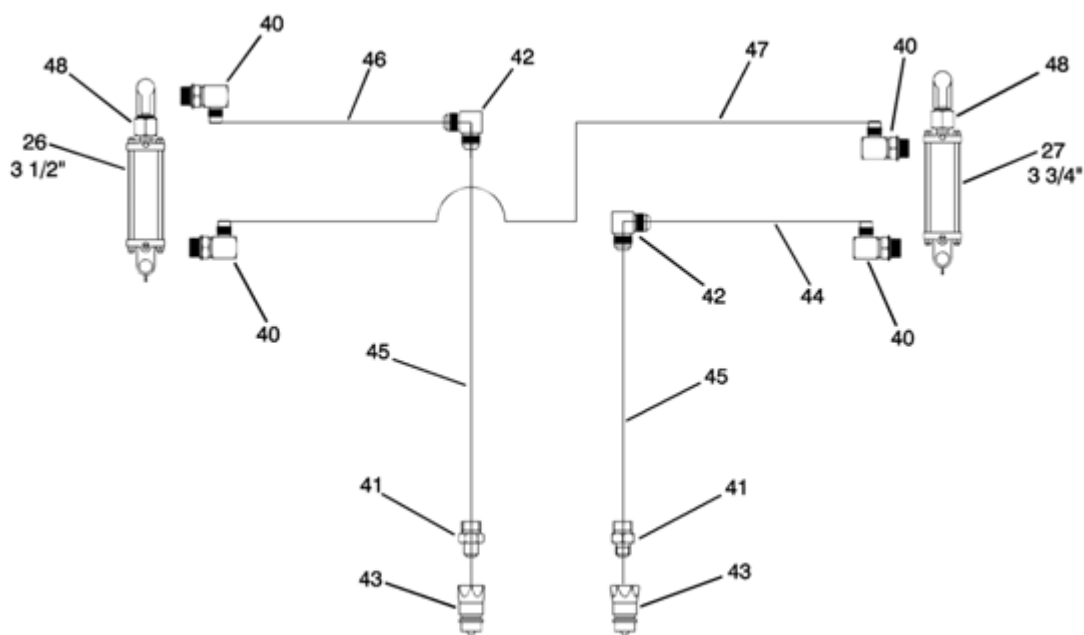
MECHANICAL KNIFE SCALPER ASSEMBLY

FIG ITEM	PART NUMBER	NOMENCLATURE	UNITS PER ASSY
	552340	MECHANICAL KNIFE SCALPER ASSEMBLY (LH SHOWN)	RF
1	552270	WLDT., SCALPER SHOE LH (USE WITH 552340 LH)	1
2	552280	WLDT., SCALPER SHOE RH (USE WITH 552350 RH)	1
3	E392001	KNIFE, SCALPER	1
4	005360	HEX NUT 1/2-13	2
5	005370	LOCK WASHER, 1/2	2
6	E174016	PLATE, CLAMP	1
7	991200	BOLT, CRG, 1/2-13 X 2	2
8	242600	BOLT, 5/8-11 X 7-1/2	1
9	035210	WASHER, FLAT 5/8	16
10	240330	BUSHING (INCLUDED IN ITEM 13 AND 14)	8
11	E552046	NUT, HEX, LOCK 5/8-11	
12	990560	BOLT, 5/8-11 X 3	1
13	E036073	ARM, LOWER	1
14	240350	ARM, UPPER	2
15	009800	BOLT, 5/16-18 X 2-1/2	1
16	240360	CHAIN, 3-LINKS	1
17	025670	NUT, HEX, LOCK, 5/16-18	2
18	005900	BOLT, 5/16-18 X 1	1
19	E738016	SPRING	1
20	240290	BAR, SPRING TAKE-UP	1
21	240310	WLDT., CLAMP	1
22	990620	BOLT, 5/8-11 X 2	4
23	355340	CLIP, 1/4 INCH WIRE ROPE WITH NUTS	1
24	242330	BUSHING, 7/8 OD X 21/32 X 19/32 LG	8

STEERING AND LIFT HYDRAULIC CIRCUITS**STEERING CIRCUIT****LIFT CIRCUIT**

STEERING AND LIFT HYDRAULIC CIRCUITS

FIG ITEM	PART NUMBER	NOMENCLATURE	UNITS PER ASSY
	567950-100	STEERING AND LIFT HYDRAULIC CIRCUITS	RF
3	566450	CYL, HYD 3.5 INCH B X 8.0 INCH	2
26	515370	CYL, HYD. 3.75 B X 8.0 S	1
27	515360	CYL, HYD. 3.50 B X 8.0	1
39	505820	TEE, UNION -6 MJIC	1
40	505780	FTG HYD 8MB-8MJT	1
41	506200	ADAPTER, STRAIGHT 3/4 ORB X 9/16 JIC	1
42	568360	FITTING, 90 DEGREE -6	1
43	I1285718C2	COUPLER, HYD	1
44	553060	HOSE ASSY, HYD. 3/8 X 124 INCH L	1
45	553050	HOSE ASSY, HYD. 3/8 X 276 INCH L	1
46	553070	HOSE ASSY, HYD. 3/8 X 135 INCH L	1
47	568350	HOSE ASSY, HYD.	1
48	538870	NUT, STOP	1

**THIS PAGE
LEFT
INTENTIONALLY
BLANK**

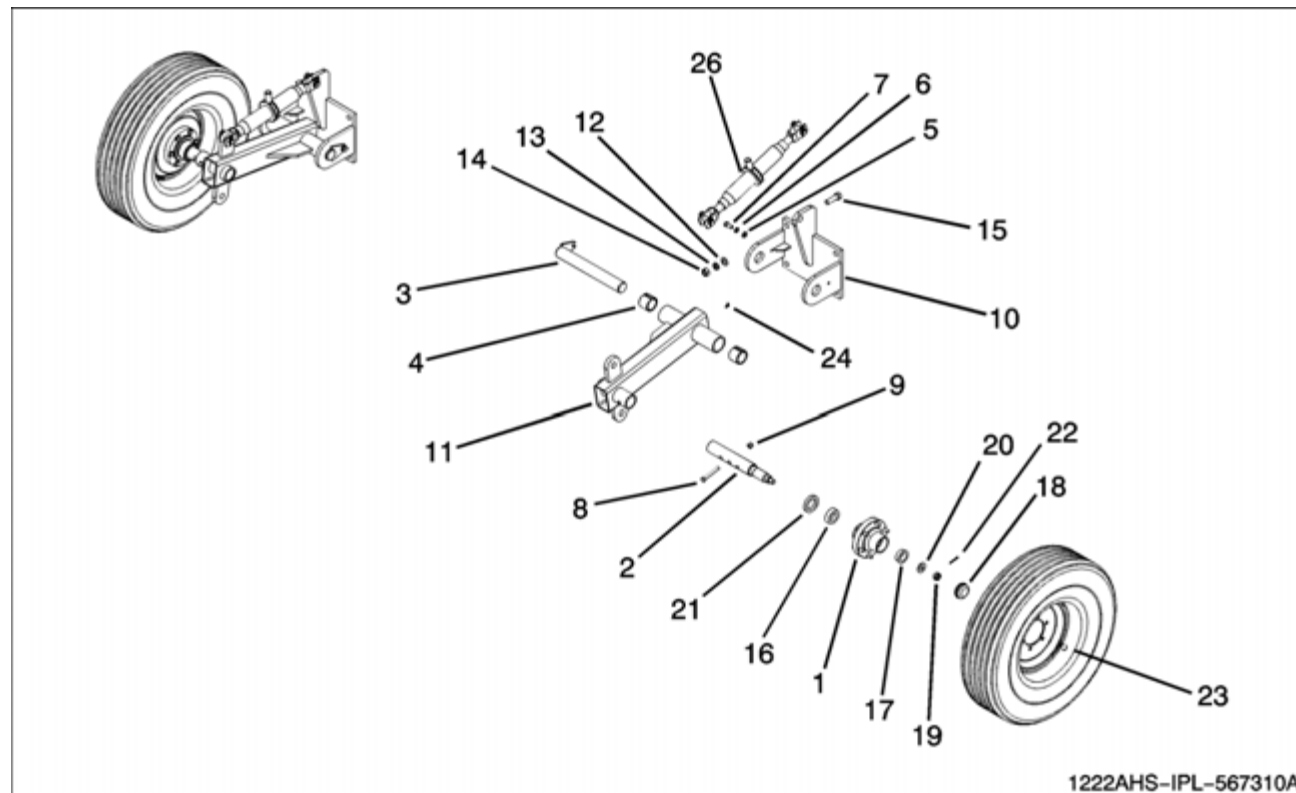
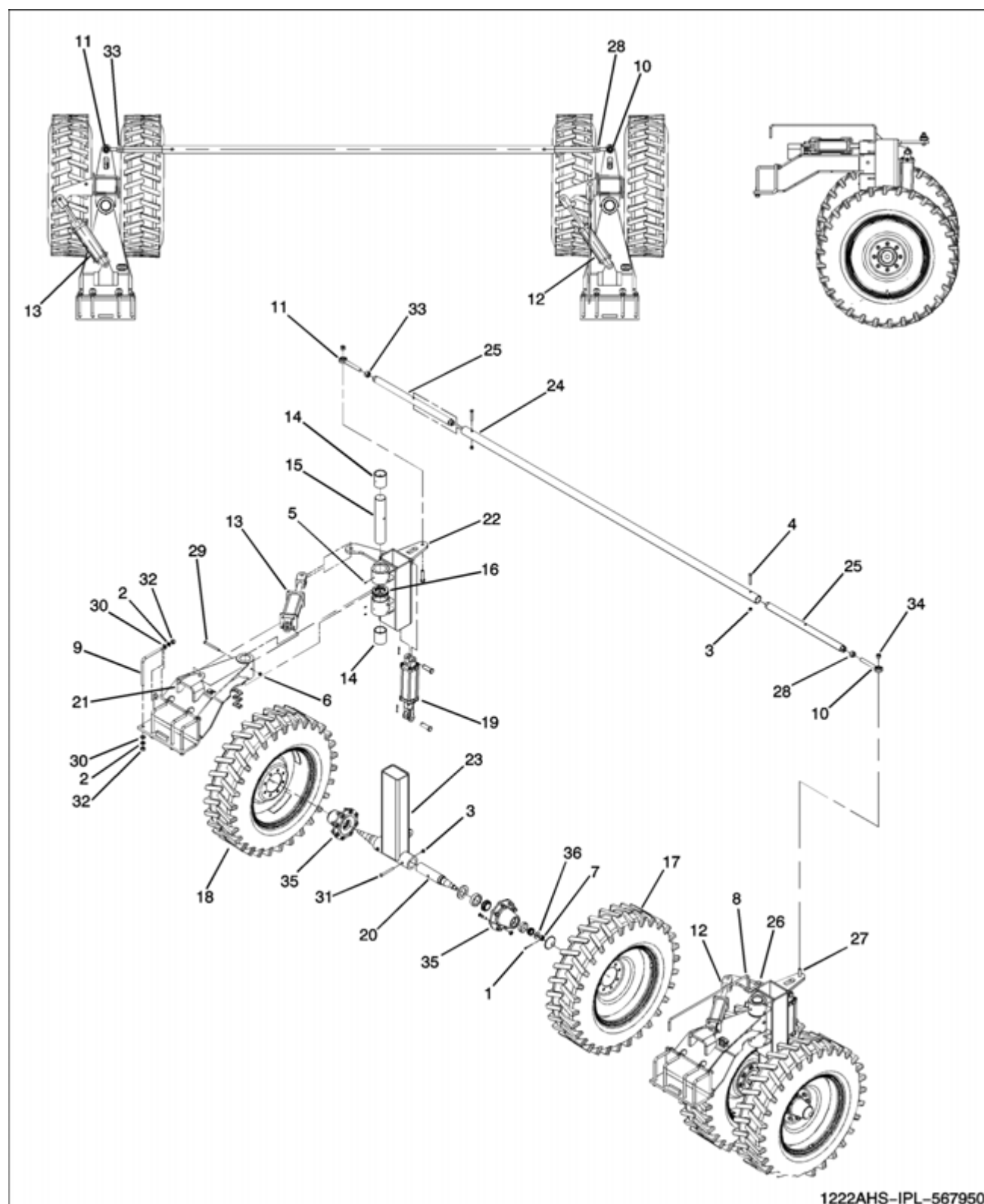
STABILIZER FRAME AND WHEEL ASSEMBLY

FIG ITEM	PART NUMBER	NOMENCLATURE	UNITS PER ASSY
	567310	STABILIZER FRAME AND WHEEL ASSEMBLY	RF
1	007590	HUB ASSY 6 X 6 X 4.62	2
2	523380	SPINDLE, CARRIER	2
3	535790	CLEVIS PIN WLDT	2
4	537610	BUSHING, TENSION	4
5	005200	WASHER, FLAT 1/2 STD	2
6	005370	WASHER, LOCK 1/2 ZN	2
7	010730	H-BOLT 1/2-13 X 1.25 GR5 ZN	2
8	041410	HHCS 1/2-13 X 3.25 G5 ZN	2
9	037540	NUT, LOCK 1/2-13 GR5 ZN NYLON	2
10	567360	MOUNT WLDT	2
11	567370	SUPPORT WLDT, WHEEL	2
12	I131017	FW 0.812	1
13	036800	LW 3/4 SAE MED	1
14	J14H794	NUT, HEX 3/4-10 GR5 ZN	1
15	990560	H-BOLT 0.7500-10 X 2.5 X 2.5-N	1
16	007600	BEARING CONE 1.662	2
17	012630	BEARING CONE	2
18	035420	HUBCAP 2-1/2"	2
19	020710	HS NUT 0.750-16 GR5	2
20	020720	WASHER, FLAT	2
21	121130	SEAL	2
22	124340	COTTER PIN 3/16 X 2-1/2	2
23	273750	WHEEL ASSY, 7.60/15 IMP	2
24	I19612R91	GREASE FITTING, 90 DEG TAP	2
26	R39520	JACK, RATCHET	1

STEERABLE WHEEL SET ASSEMBLY

1222AHS-IPL-567950

STEERABLE WHEEL SET ASSEMBLY

FIG ITEM	PART NUMBER	NOMENCLATURE	UNITS PER ASSY
	567950	STEERABLE WHEEL SET ASSEMBLY	RF
1	026630	1/4 X 2.0 COTTER PIN	4
2	036800	LW 3/4 INCH SAE MED	17
3	037540	NUT, LOCK 1/2-13 GR5 ZN NYLON	6
4	041410	HHCS, 1/2-13 X 3.25 GR5 ZN	2
5	115590	FITTING, FREASE	6
6	127890	HL NUT 0.5000-13-D-N	2
7	129380	NUT, SLOTTED 7/8-14 GR5 ZN	4
8	357160	ROD WLDT.	1
9	403860	BOLT, "L"	8
10	414470	BALL JOINT	1
11	414480	BALL JOINT	1
12	515360	CYL., HYD., 3.50B X 8.00	1
13	515370	CYL., HYD. 3.75B X 8.0 S	1
14	534110	BEARING, SLEEVE	4
15	534120	KINGPIN	2
16	534210	BEARING, 3.00 BALL	2
17	539770	TIRE AND WHEEL, RH	2
18	539780	TIRE AND WHEEL, LH	2
19	566450	CYL., HYD. 3.5 INCH B X 8.0 INCH	2
20	566690	SPINDLE, WHEEL	4
21	568010	STRUT WLDT., PIVOT	2
22	568050	PIVOT WLDT.	2
23	568100	AXLE WLDT.	2
24	568260	TIE ROD, CENTER	1
25	568270	TIE ROD WLDT.	2
26	990540	HBOLT 0.7500-10 X 2.5 X 2.5-N	1
27	990580	HBOLT 0.7500-10 X 3.25 X 3.25-N	2
28	E552087	NUT, HEX 1.00-8 LH GR5 ZN	1
29	E672045	BOLT, HHCS 1/2-13 X 6 GR5 ZN	2
30	I131017	FW 0.812	16
31	I189314	HBOLT 0.5000-13 X 4.75 X 4.75-N	4
32	J14H794	NUT, HEX 3/4-10 GR5 ZN	17
33	J14H805	NUT, HEX 1.00-8 GR5 ZN	1
34	JK40016	NUT, LOCK, 3/4-10 GR8 ZN TOP	2
35	TG0760	HUB ASSEMBLY	4
36	V030620	WASHER, FLAT	4
37	527700	CLAMP, HOSE	4
38	527680	BAR, HOSE CLAMP	2

**THIS PAGE
LEFT
INTENTIONALLY
BLANK**

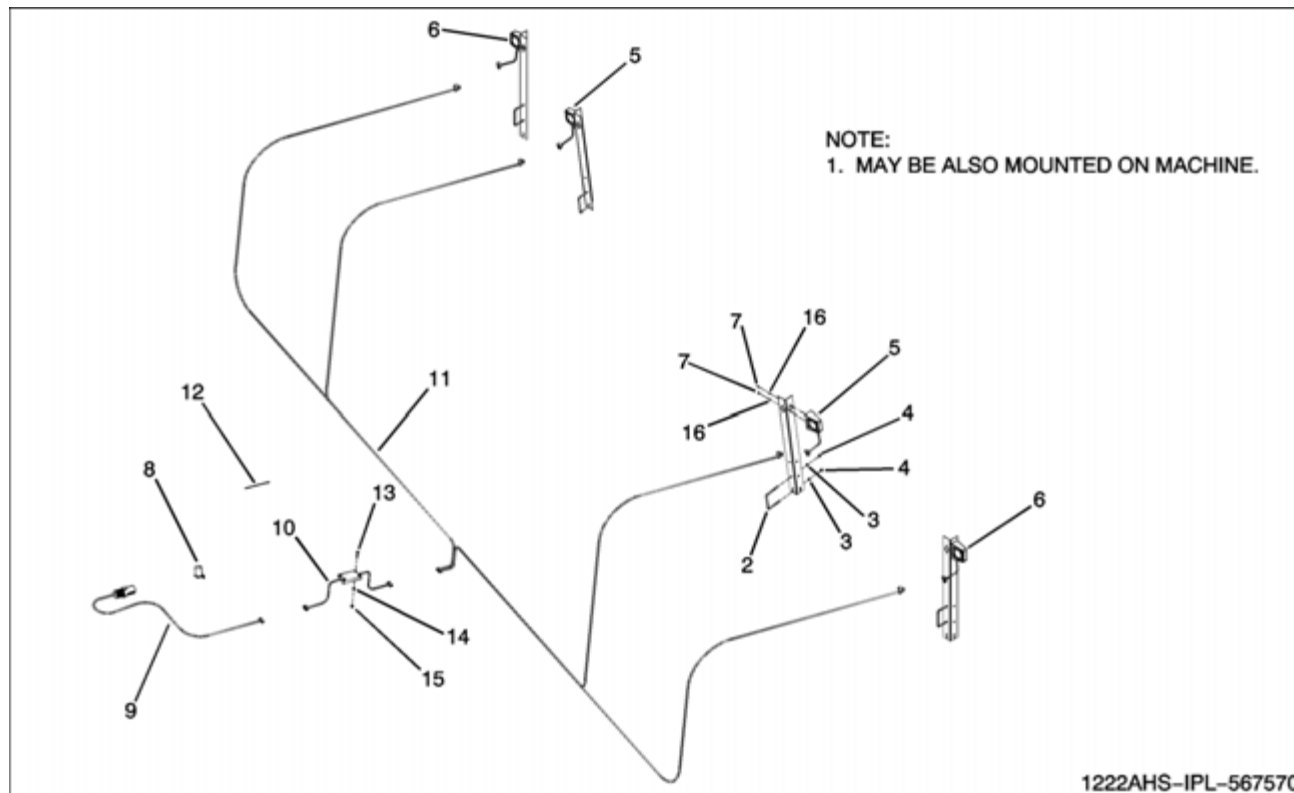
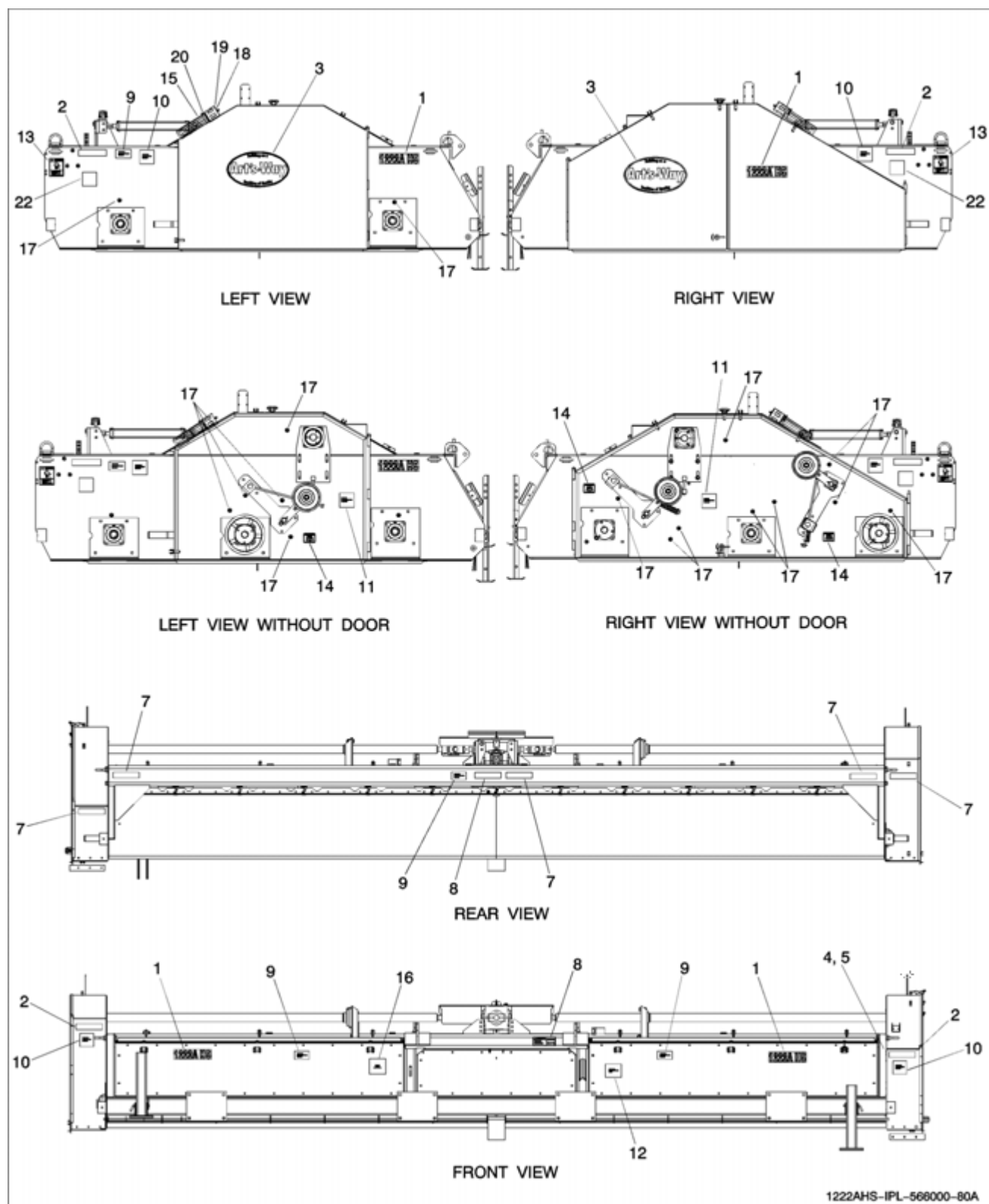
ROAD HAZARD LIGHT ASSEMBLY

FIG ITEM	PART NUMBER	NOMENCLATURE	UNITS PER ASSY
	567570	ROAD HAZARD LIGHT ASSEMBLY	RF
1	476490	ANGLE SAFETY LIGHT	4
2	U10100995	BOLT "U"	4
3	005370	WASHER, LOCK 1/2 ZN	8
4	005360	NUT, HEX 1/2-13	8
5	476520	LAMP ASSY., RED REAR	2
6	476510	LAMP ASSY., AMBER	2
7	012051	BOLT, HHCS 1/4-20 X 3/4	8
8	JPT1296	BRACKET, STORAGE HOLDER 7 POLE	1
9	476570	HARNESS, PRIMARY SAFETY LIGHTS	1
10	476540	CONVERTER, AG SAFETY LIGHT	1
11	476560	HARNESS, WISHBONE	1
12	149670	TIE, 3/16 INCH X 11 INCH CABLE	6
13	476640	BOLT, HEX MACH #10-24 X 1.5	4
14	120600	WASHER, LOCK #10 X 21/64 X 3/6	4
15	120590	NUT, HEX 10-24 X 1.5	4
16	029440	LW 0.25	8

DECAL LOCATION

DECAL LOCATION

FIG ITEM	PART NUMBER	NOMENCLATURE	UNITS PER ASSY
	566000-80	DECAL LOCATION	RF
1	567530	DECAL, "1222AHS"	4
2	476460	TAPE, YELLOW RETRO-REFLECTIVE	4
3	519480	DECAL, ART'S WAY LOGO	2
4	355500	TAG, SERIAL NUMBER FINISHED	1
5	204510	NAIL, 1/4 GRIP	4
6	476450	TAPE, RED RETRO-REFLECTIVE	1
7	476470	TAPE, RED-ORANGE FLORESCENT	5
8	467460	DECAL, CAUTION	1
9	467420	DECAL, WARNING RIDERS FALLING	4
10	467450	DECAL, WARNING MOVING PARTS	4
11	467430	DECAL, DANGER SHIELD MISSING	2
12	346310	DECAL, WARNING HIGH PRESSURE	1
13	467400	DECAL, WARNING FLYING OBJECT	2
14	289500	DECAL, IDLER SPRING 4-1/2 INCH	3
15	449190	TUBE, MANUAL HOLDER	1
16	368040	DECAL, WARNING HIGH PRESSURE FLUID	1
17	146670	DECAL, GREASE SYMBOL	17
18	460010	MANUAL, PTO SAFETY AG	1
19	567540	MANUAL, 1222A HS DEFOLIATOR	1
20	455160	CLAMP, HOSE	1
-21	962640	STRIP, SEAL 0.19 X 0.75 X 6.00	25
22	487770	DECAL, DANGER OF CRUSHING	2

NOTES



**ART'S-WAY MANUFACTURING CO., INC.
TECHNICAL MANUALS**

Manuals are available from your local dealer or Art's-Way Manufacturing Co., Inc. for the operation, service, and repair of your machine. For prompt convenient service, contact your local dealer for assistance in obtaining the manuals for your machine.

Your local dealer can expedite your order for operator manuals, illustrated parts catalogs, service manuals, and maintenance records.

Always give the Machine Name, Model, and Serial Number so your local dealer can provide the correct manuals for your machine.

Art's-Way Manufacturing Co., Inc. reserves the right to make improvements in design or changes in specifications at any time without incurring any obligation to install them on units previously sold.

Except as expressly authorized, no part of this manual may be reproduced, copied, transmitted, disseminated, downloaded or stored in any storage medium, for any purpose without the express prior written consent of Art's-Way Manufacturing Co., Inc.

**ART'S-WAY MANUFACTURING CO., INC.
HWY 9 WEST - PO Box 288
Armstrong, IA. 50514 U.S.A**

© Copyright 2010
ART'S-WAY MANUFACTURING CO., INC.
All Rights Reserved



Art's-Way Manufacturing Co., Inc.
Hwy 9 West – PO Box 288
Armstrong, IA. 50514 U.S.A