



Art's-Way Manufacturing Co., Inc.

Model 8200
Forage Box

Illustrated Parts List
636210

Issued March 2018



This symbol means ATTENTION! BECOME ALERT! YOUR SAFETY IS INVOLVED. The message that follows the symbol contains important information about your safety. Carefully read the message. Make sure you fully understand the causes of possible injury or death.

IF THIS MACHINE IS USED BY AN EMPLOYEE, IS LOANED, OR IS RENTED, MAKE SURE THAT THE OPERATOR UNDERSTANDS THE TWO INSTRUCTIONS BELOW.

BEFORE THE OPERATOR STARTS THE ENGINE:

GIVE INSTRUCTIONS TO THE OPERATOR ON SAFE AND CORRECT USE OF THE MACHINE.

MAKE SURE THE OPERATOR READS AND UNDERSTANDS THE OPERATOR'S MANUAL FOR THIS MACHINE.

⚠ WARNING

IMPROPER OPERATION OF THIS MACHINE CAN CAUSE INJURY OR DEATH.

BEFORE STARTING THE ENGINE, DO THE FOLLOWING:

1. READ THE OPERATOR'S MANUAL.
2. READ ALL SAFETY DECALS ON THE MACHINE.
3. CLEAR THE AREA OF OTHER PERSONS.
4. LEARN AND PRACTICE SAFE USE OF MACHINE CONTROLS IN A SAFE AND CLEAR AREA BEFORE YOU OPERATE THIS MACHINE ON A JOB SITE.

It is your responsibility to observe pertinent laws and regulations and to follow manufacturer's instructions on machine operation and maintenance.

See your Authorized Art's-Way Manufacturing Co., Inc. dealer or Art's-Way Manufacturing Co., Inc. for additional operator's manuals, illustrated parts catalogs, and service manuals.

TO THE OWNER

Congratulations on the purchase of your new Art's-Way Forage Box. You have selected a top quality machine that is designed and built with pride to ensure you have many years of efficient and reliable service.

Many people have worked on the design, production, and delivery of this Forage Box. The information in this manual is based on the knowledge, study, and experience through years of specializing in the manufacturing of farm machinery. This manual is designed to provide you with important information regarding safety, maintenance, and machine operation so you can and will get the best possible performance from your Forage Box.

Even if you are an experienced operator of this or similar equipment, we ask that you read this manual before operating this Forage Box. The way you operate, adjust, and maintain this unit will have much to do with its successful performance. Any further questions you may have about this product of Art's-Way equipment should be directed to your local Art's-Way dealer or to Art's-Way Manufacturing Co., Inc., Armstrong, Iowa, 50514, (712) 864-3131.

SPECIFICATIONS AND DESIGN ARE SUBJECT TO CHANGE WITHOUT NOTICE

Art's-Way Manufacturing Co., Inc. is continually making product improvements. In doing so, we reserve the right to make changes and/or add improvements to our products without obligation for the equipment previously sold.

Modifications to this Forage Box may affect the performance, function, and safety of its operation. Therefore, no modifications are to be made without the written permission of Art's-Way Manufacturing Co., Inc. Any modification made without the written permission of Art's-Way Manufacturing Co., Inc. shall void the warranty of this product.

In the interest of continued safe operation of this Forage Box, pay particular attention to the safety alert symbol(s) throughout this manual.

Art's-Way Manufacturing Co., Inc. STATEMENT OF PRODUCT LIABILITY

Art's-Way Manufacturing Co., Inc. recognizes its responsibility to provide customers with a safe and efficient product. Art's-Way Manufacturing Co., Inc., attempts to design and manufacture its products in accordance with all accepted engineering practices effective at the date of design. This statement should not be interpreted to mean that our products will protect against the user's own carelessness or failure to follow common safety practices nor will Art's-Way Manufacturing Co., Inc., be liable for any such act. In addition, Art's-Way Manufacturing Co., Inc., assumes no liability for any altered product or any modified product by users or anyone other than an authorized dealer.

IMPORTANT WARRANTY INFORMATION

The warranty for this Forage Box appears on page 6 of this manual. In order to establish proper warranty registration, the Warranty Registration must be completed and returned to the factory. Failure to comply with this requirement will result in invalidating the warranty!

LIMITATIONS OF THIS MANUAL

This manual contains operating instructions for your 8200 Forage Box only. Any mention of other machinery in this manual other than the 8200 Forage Box is for reference only. This manual does not replace nor is it to be used for any machinery that may be attached to or used in conjunction with the 8200 Forage Box.

PARTS & SERVICE

As the purchaser of your new forage box, it is very important to consider the following factors:

A. Original Quality

B. Availability of Service Parts

C. Availability of Adequate Service Facilities

Art's-Way Manufacturing Co., Inc. has an excellent dealership network ready to answer any questions you may have about your forage box. Parts for your machine may be ordered through our dealers. When placing a parts order, please have the **model** and **serial number** ready. This will allow the dealer to fill your order as quickly as possible.

For your convenience, we have provided this space for you to record your model number, serial number, and the date of purchase, as well as your dealer's name and address.



SERIAL NO.

MODEL NO.

**Manufactured by
Art's Way Manufacturing Co., Inc.
Armstrong IA USA**

TABLE OF CONTENTS

TO THE OWNER	1
SPECIFICATIONS AND DESIGN ARE SUBJECT TO CHANGE WITHOUT NOTICE	1
Art's-Way Manufacturing Co., Inc. STATEMENT OF PRODUCT LIABILITY	1
IMPORTANT WARRANTY INFORMATION	1
LIMITATIONS OF THIS MANUAL	1
PARTS & SERVICE	2
TABLE OF CONTENTS	3-5
LIMITED WARRANTY	6
SAFETY FIRST	7
NOTICES OF DANGER, WARNING, AND CAUTION	7
SAFETY INSTRUCTIONS	8
GENERAL	8
BEFORE OPERATING	9
DURING OPERATION	9
MAINTENANCE SAFETY	9
HYDRAULIC SAFETY	10
TRANSPORTATION SAFETY	10
STORAGE SAFETY	10
TIRE SAFETY	11
ASSEMBLY SAFETY	11

TABLE OF CONTENTS	
NAME	PAGE
FLOOR ASSEMBLY	14
SIDES ASSEMBLY	16
REAR GATE TO BOX ASSEMBLY	18
REAR GATE ASSEMBLY	20
FLAT FRONT EXPLODED	22
FRONT CONVEYOR ASSEMBLY	24
CONVEYOR ASSEMBLY	26
DOORS AND SHIELDS ASSEMBLY	28
FRONT BEATER ASSEMBLY	30
FRONT GEARING UPPER ASSEMBLY	32
FRONT GEARING LOWER ASSEMBLY	34
APRON CHAIN FRONT ASSEMBLY	36
CHAIN LOCATIONS	38
APRON CHAIN	40
APRON TENSION ASSEMBLY	42
REAR GEAR GUARD ASSEMBLY	44
REAR GEAR ASSEMBLY	46
22' FENDER ASSEMBLY	48
24' FENDER ASSEMBLY	50
TONGUE ASSEMBLY	52
TONGUE BAR ASSEMBLY	54
RUNNING GEAR ASSEMBLY	56
SUSPENSION ASSEMBLY	58
AXLE & BRAKE ASSEMBLY	60
FRONT HYDRAULIC ASSEMBLY	62
HYDRAULIC SCHEMATICS	64

LIMITED WARRANTY

Refer to the operator's manual for warranty information.

SAFETY FIRST

SAFETY INSTRUCTIONS

"A careful operator is the best insurance against an accident." Quote from the National Safety Council.

Most accidents can be prevented if the operator:

1. Fully understands how the machine functions.
2. Can anticipate situations which may produce problems.
3. Can make necessary corrections before problems develop.

**THIS SYMBOL MEANS ATTENTION!
BECOME ALERT!
YOUR SAFETY IS INVOLVED!**



- Universal Safety Alert Symbol

The American Society of Agricultural Engineers has adopted the Universal Safety Alert Symbol as a way to identify areas of potential danger if the equipment is not operated correctly. Please be alert whenever you see this symbol in the manuals or on your forage box.

Art's-Way Manufacturing Co., Inc. strives to make our equipment as safe as possible. The Art's-Way 8200 Forage Box conforms to applicable safety standards at the time of manufacturing. A safety conscious equipment operator makes an effective accident-prevention program complete.

Safety features and instructions for the forage box are detailed in the Safety Guidelines section of this Operator's Manual. It is the responsibility of the owner to ensure that all operators read and understand the manual before they are allowed to operate the Forage box. (Occupational Safety and Health Administration (OSHA) regulations 1928.57).

NOTICES OF DANGER, WARNING, AND CAUTION

Signal Words: Note the use of signal words **DANGER**, **WARNING**, and **CAUTION** on the forage box and in this manual. The appropriate signal word for each has been selected using the following guidelines:

DANGER

Indicates a hazardous situation which, if not avoided, will result in death or serious injury.

WARNING

Indicates a hazardous situation which, if not avoided, could result in death or serious injury.

CAUTION

Indicates a potentially hazardous situation which, if not avoided, could result in minor or moderate injury.

NOTICE

NOTICE is used to address practices not related to physical injury.

SAFETY INSTRUCTIONS

Safety instructions (or equivalent) signs indicate specific safety-related instructions or procedures.

Note: Contains additional information important to a procedure and will be found within the regular text body of this manual.

GENERAL

SAFETY INSTRUCTIONS

Most work related accidents are caused by failure to observe basic safety rules or precautions. An accident can often be avoided by recognizing potentially hazardous situations before an accident occurs. As you operate and maintain the Forage box you must be alert to potential hazards. You should also have the necessary training, skills, and tools to perform any assembly procedure.

Improper operation and/or maintenance of this unit could cause a dangerous situation that results in injury or death.

Do not use this unit until you read and understand the information contained in this manual. Do not use this equipment for anything other than its intended purpose.



Safety precautions and warnings are provided in this manual and on the unit. If these hazard warnings are not heeded, bodily injury or death could occur to you or to other persons.

Art's-Way Manufacturing Co., Inc. cannot anticipate every possible circumstance that might involve a potential hazard. The warnings in this manual and on the product are, therefore, not all-inclusive. If a method of operation not specifically recommended by us is used, you must satisfy yourself that it is safe for you and for others. You should also ensure that the unit will not be damaged or be made unsafe by the methods that you choose.

The information, specifications, and illustrations in this manual are based on the information that was available at the time this material was written and can change at any time.

Safety Alert Symbols



death.

This is the safety alert symbol. It is used to alert you to potential personal injury hazards. Obey all safety messages that follow this symbol to avoid possible injury or

This manual contains DANGERS, WARNINGS, CAUTIONS, NOTICES, SAFETY INSTRUCTIONS, and NOTES which must be followed to prevent the possibility of improper service, damage to the equipment, personal injury, or death. The following key words call the readers attention to potential hazards.

Hazards are identified by the "Safety Alert Symbol" and followed by a signal word such as "DANGER", "WARNING", or "CAUTION".

**SAFETY
INSTRUCTIONS**

Remember:

"The Best Operator is a Safe Operator"

CAUTION



Read and understand the operator's manual and all the safety decals before operating the forage box. Review all safety instructions with all operators annually.

BEFORE OPERATING

SAFETY
INSTRUCTIONS

Do not wear loose fitting clothing as it may catch in moving parts.



Make sure all guards and shields are installed, including the tractor power take-off (PTO) master shield, before starting or operating the forage box.



Be sure that the correct implement driveline parts are used and that they are properly secured.

Lower the lifter wheels when the forage box is not in use.

Install safety chain when attaching the forage box to the tractor.



Clear the area of bystanders, especially children, when making repairs, adjustments, or performing maintenance on the forage box.



Do not allow riders.

Put all tractor and machine controls in “neutral” and disengage the PTO before starting. Follow the starting instructions according to the OEM tractor manual.



Operate the forage box only while seated on the tractor seat.



Make sure the unit is adequately supported with safety blocks or safety stands when changing tires or performing maintenance.

DURING OPERATION

CAUTION



Entanglement Hazard
Keep hands, feet, hair, and clothing away from moving parts. Wait for all movement to stop before approaching equipment. Before making adjustments:

1. Shut off the tractor,
2. Set parking brake,
3. Put machine in neutral, and
4. Remove key while making adjustments.



Keep all shields and guards in place and in good working condition.



Keep all bystanders, especially children, away from the forage box while in operation.



Do not allow riders while the forage box is in operation.



Do not attempt to unclog, clean, or adjust the forage box while it is running.



Stay away from overhead power lines. Electrocution can occur even without direct contact.



Keep all hydraulic lines, fittings, and couplers tight and free of leaks. (Refer to Safety Guidelines – Hydraulic Safety).



Use caution when ascending or descending on the forage box. Wet shoes or boots are slippery.

MAINTENANCE SAFETY

SAFETY
INSTRUCTIONS

Follow all operating, maintenance, and safety instructions found in this Manual.



Before servicing, adjusting, repairing, or unclogging the machine, always make sure the tractor engine is stopped, key in your pocket, the machine is lowered to the ground, all controls are placed in neutral, the parking brake is set, and all the moving parts have stopped.



Use sufficient tools, jacks, and hoists that have the capacity for the job.



Use support blocks or safety stands when changing tires or performing maintenance.



Follow good shop practices of keeping the service area clean and dry, and use adequate light for the job at hand.



Before applying pressure to the hydraulic system, make sure all lines, fittings, and couplers are tightly secured and in good condition.



Make sure all shields/guards are in place and properly secured when performing maintenance.

HYDRAULIC SAFETY

SAFETY INSTRUCTIONS

Follow all operating, maintenance, and safety instructions found in this Manual.

Make sure components in the hydraulic system are kept clean and in good working condition.



Relieve pressure from the hydraulic system before servicing or disconnecting from the tractor.



Keep all hydraulic lines, fittings, and couplers tightly secured and free of leaks.



Replace any worn, cut, abraded, flattened, or crimped hoses.



Do not make any temporary repairs to the hydraulic lines, fittings, or hoses using tape, clamps, or cement. The hydraulic system operates under extremely high pressure and temporary repairs may fail suddenly and create a hazardous/dangerous situation.



Wear proper hand and eye protection when searching for a high-pressure hydraulic leak. Use a piece

of wood or cardboard as a backstop instead of hands to identify and isolate a leak. If injured by a concentrated high-pressure stream of hydraulic fluid, seek medical attention immediately. Serious infection or toxic reaction can develop if hydraulic fluid penetrates the surface of the skin.



Before applying pressure to the system, make sure all components are tight and that the hydraulic lines, hoses, and couplings are not damaged.

TRANSPORTATION SAFETY

SAFETY INSTRUCTIONS

Follow all operating and safety instructions found in this manual when transporting this equipment.

Make sure the forage box complies with all local regulations regarding transporting equipment on public roads and highways.



Make sure the Slow Moving Vehicle (SMV) emblem and all lights and reflectors required by local highway and transportation authorities are properly in place, clean, and clearly visible to traffic.



Do not allow riders on any machinery during transport.

Make sure the forage box is securely attached to the tractor and install a safety chain to the forage box.

Make sure the tractor brake pedals are latched together.

Do not exceed 20 mph (32 km/h) when transporting the forage box. Always reduce speed on rough roads and surfaces, or when going down inclines.

Use caution when turning and always use the turn signals on the tractor to indicate your turning intentions to the other traffic.

The weight of the trailed machine should NEVER exceed the weight of the towing vehicle.

Check all clearances carefully whenever the machine is towed.

Lower the elevator into the transport position before transporting the forage box on the highway.



Stay away from overhead obstructions and power lines during transport. Electrocutation can occur even without direct contact.

STORAGE SAFETY

SAFETY INSTRUCTIONS

Follow all operating and safety instructions found in this manual when storing this equipment.



Store the forage box in an area away from human activity.



Do not permit children to play on or around the stored machine at any time.

Make sure that the forage box is stored in an area with a firm and level base to prevent the machine from tipping or sinking into the ground.



Block the wheels to prevent the machine from rolling.

TIRE SAFETY**SAFETY
INSTRUCTIONS**

Follow all operating and safety instructions found in this manual when working around tires.

Have only a qualified tire dealer or tire repair service perform tire repairs.

Do not attempt to install a tire on a wheel or rim unless you have the proper equipment and experience to do the job.

Do not substitute tires with a lesser road rating and/or capacity for the original equipment tires.

WARNING

Explosive Force Hazard
Tire replacement, repair, and/or maintenance should be done by a qualified tire dealer or qualified repair service.

Failure to follow proper procedures when installing a tire on a wheel or rim can produce an explosive force that will result in serious injury or death.

Do not attempt to install a tire without proper equipment and experience to perform the job.

ASSEMBLY SAFETY**SAFETY
INSTRUCTIONS**

Follow all assembly, operating, and safety instructions found in this manual when assembly this equipment.



Use adequate manpower to perform assembly procedures safely.

Assemble the forage box in an area with sufficient space to maneuver the largest components and allow easy access to all sides of the machine.



Use only forklifts, lift cranes, jacks, and tools with sufficient capacity for the loads.

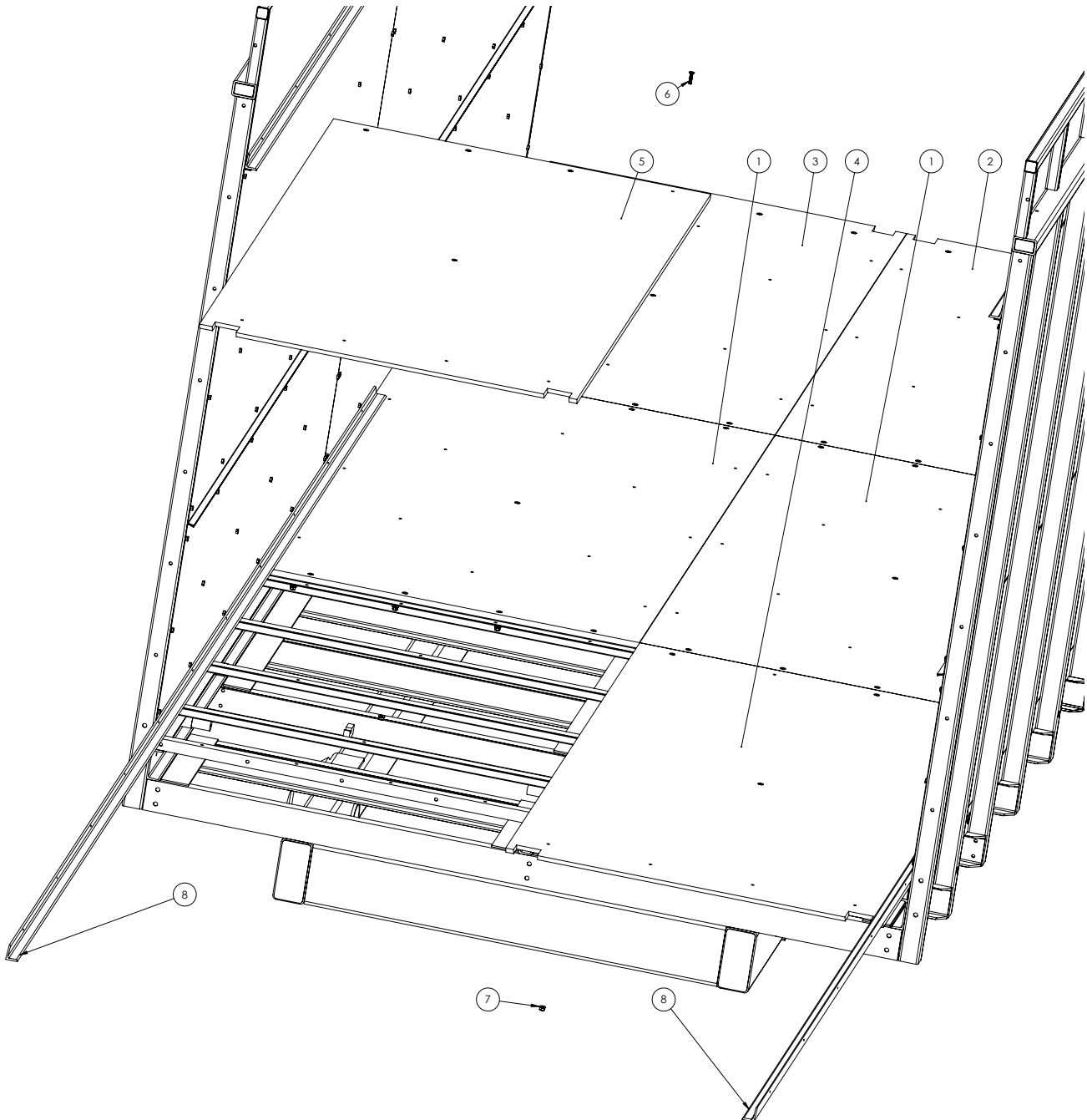


Do not allow spectators, especially children, in the working area.

**THIS PAGE
LEFT
INTENTIONALLY
BLANK**

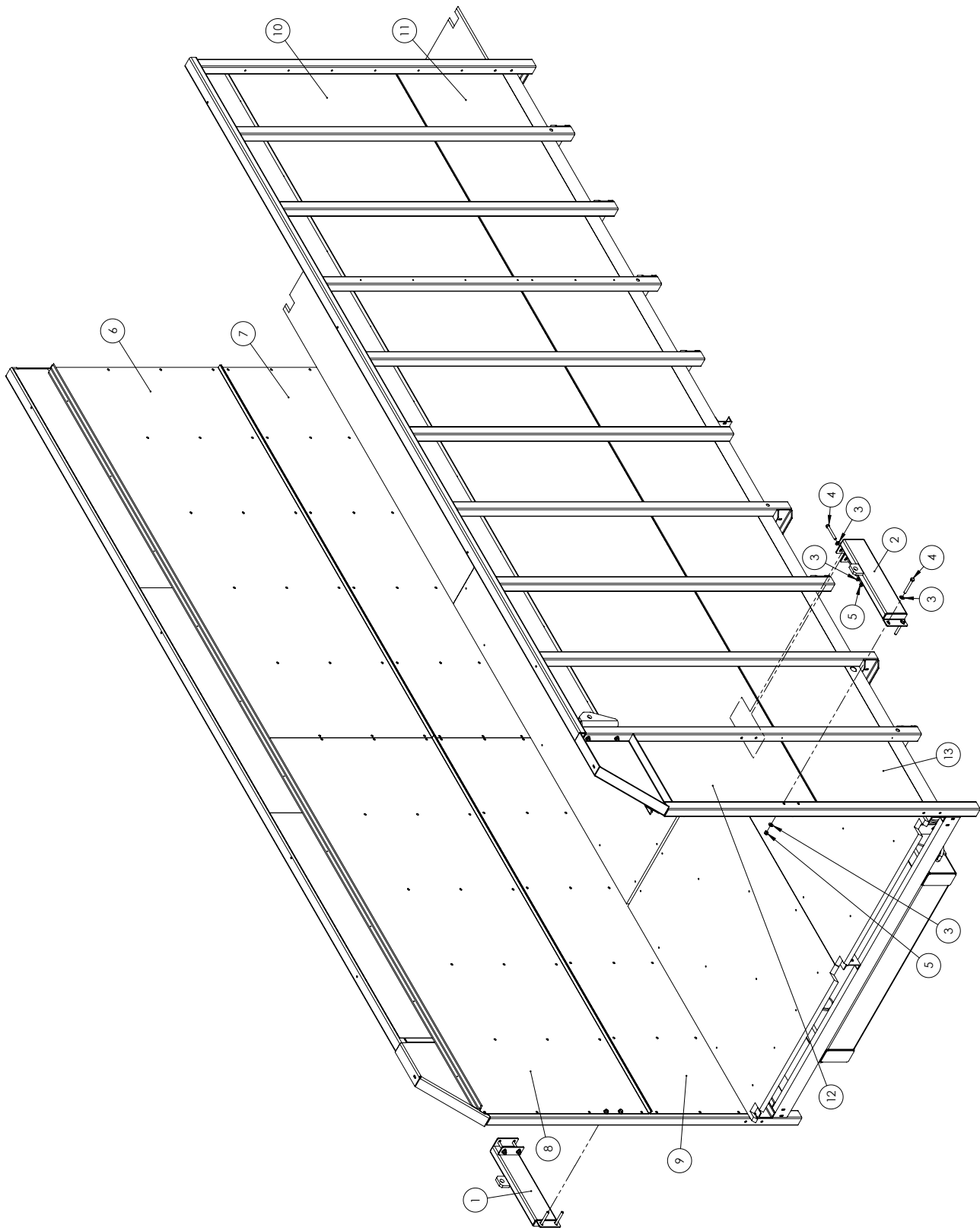
SECTION 1: FORAGE BOX

FLOOR ASSEMBLY



ITEM NO.	PART NUMBER	DESCRIPTION	QTY. 22' COMBO	QTY. 24' COMBO	QTY. 22' REAR	QTY. 24' REAR
1	632020	CENTER FLOOR	2	2	2	2
2	632000	REAR LEFT DENSILITE	-	1	-	1
	632080		1	-	1	-
3	632010	REAR RIGHT DENSILITE FLOOR	-	1	-	1
	632090		1	-	1	-
4	632030	FRONT LEFT FLOOR	-	1	-	1
	632890		1	-	1	-
5	632040	FRONT RIGHT FLOOR	-	1	-	1
	632900		1	-	1	-
6	MP907624	SCREW - FHSCS 5/16-18 X	45	45	45	45
7	600120	NUT, HFH NYLOC 3/8-16	53	53	53	53
8	628250	1.5 X 1.5 X .19 ANG	2	2	2	2

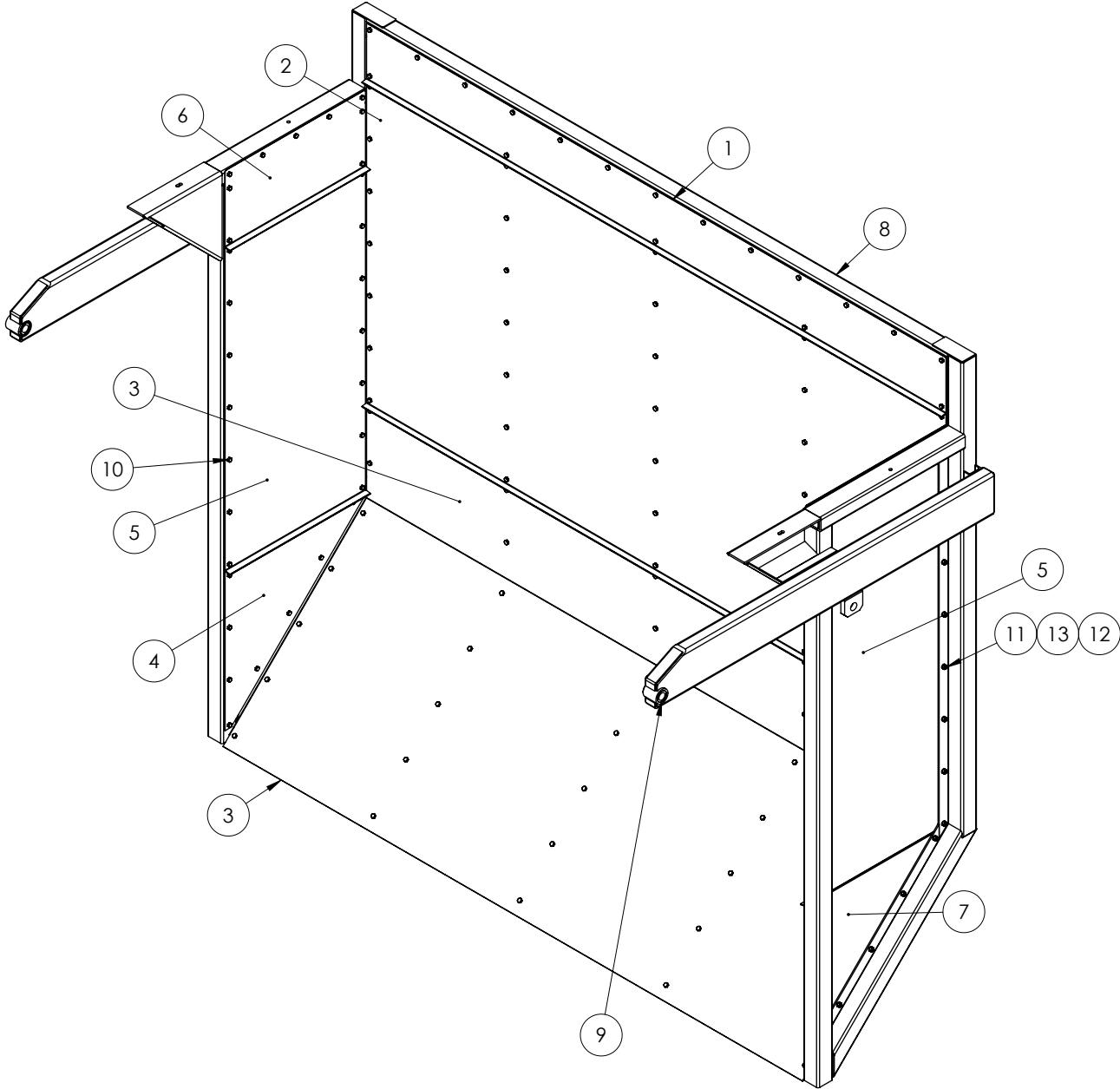
SIDES ASSEMBLY



ITEM NO.	PART NUMBER	DESCRIPTION	QTY. 22'	QTY. 24'
1	629060	WLDT, MNT, CYL LH	1	1
2	629070	WLDT, MNT, CYL,RH	1	1
3	005200	WASHER, FLAT 1/2 STD	22	22
4	038560	BOLT, HHCS 1/2-13 X 4"	12	12
5	005360	NUT, HEX 1/2-13	12	12
6	629960	FRNT, TOP LH	1	1
7	629930	FRNT,BTM LH	1	1
8	632520	REAR, TOP LH	1	-
	629990		-	1
9	632500	REAR,BTM LH	1	-
	629980		-	1
10	629940	FRNT, TOP RH	1	1
11	629950	FRNT, BTM RH	1	1
12	632530	REAR, TOP RH	1	-
	630500		-	1
13	632510	REAR, BTM RH	1	-
	630490		-	1

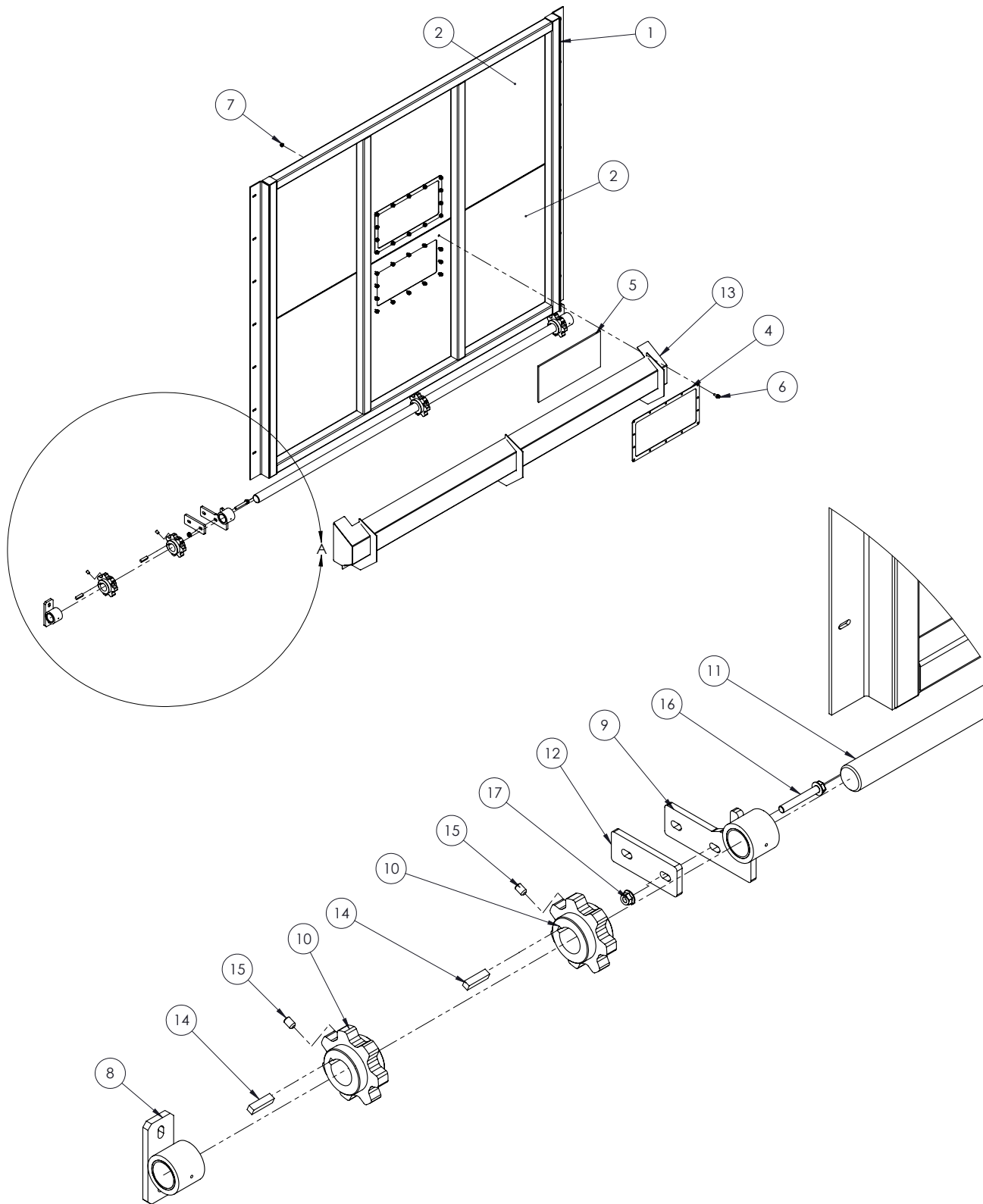
ITEM NO.	PART NUMBER	DESCRIPTION	QTY.
1	630020	TAILGATE ASSEMBLY	1
2	HC21-01-3116	CYLINDER	2
3	628075	REAR COVER COM FB	1
4	628077	RUBBER FLAP, COMMERCIAL	1
7	991060	BOLT	2
8	990720	WASHER	6
9	1110440	NUT	2

REAR GATE ASSEMBLY



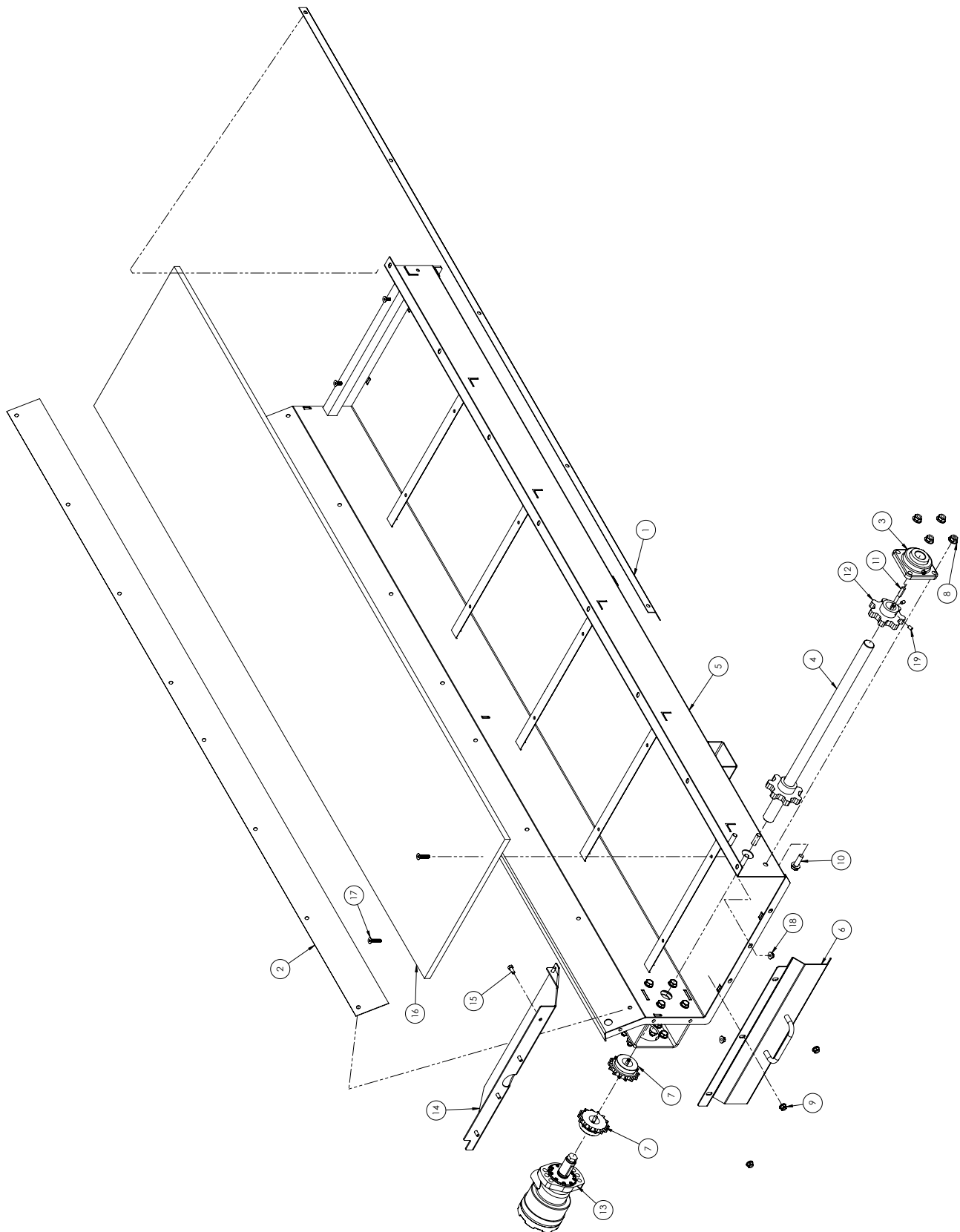
ITEM NO.	PART NUMBER	DESCRIPTION	QTY.
1	630510	PANEL REAR, TOP	1
2	630480	PANEL REAR, MID	1
3	629920	PANEL BACK SLOPE	1
4	630520	PANEL RH BOTTOM	1
5	630540	PANEL LH MID	2
6	630530	PANEL TOP SIDE	2
7	629970	PANEL BOTTOM, LH	1
8	628020	TAILGATE WLDT	1
9	629740	BUSHING, SLEEVE UHMW	2
10	025760	BOLT, HHCS 5/16-18X3/4	79
11	012140	BOLT, HHCS 5/16-18 X 3/4	71
12	023620	WASHER, LOCK 5/16	69
13	023630	NUT, HEX 5/16-18 GR5 ZN	69

FLAT FRONT EXPLODED

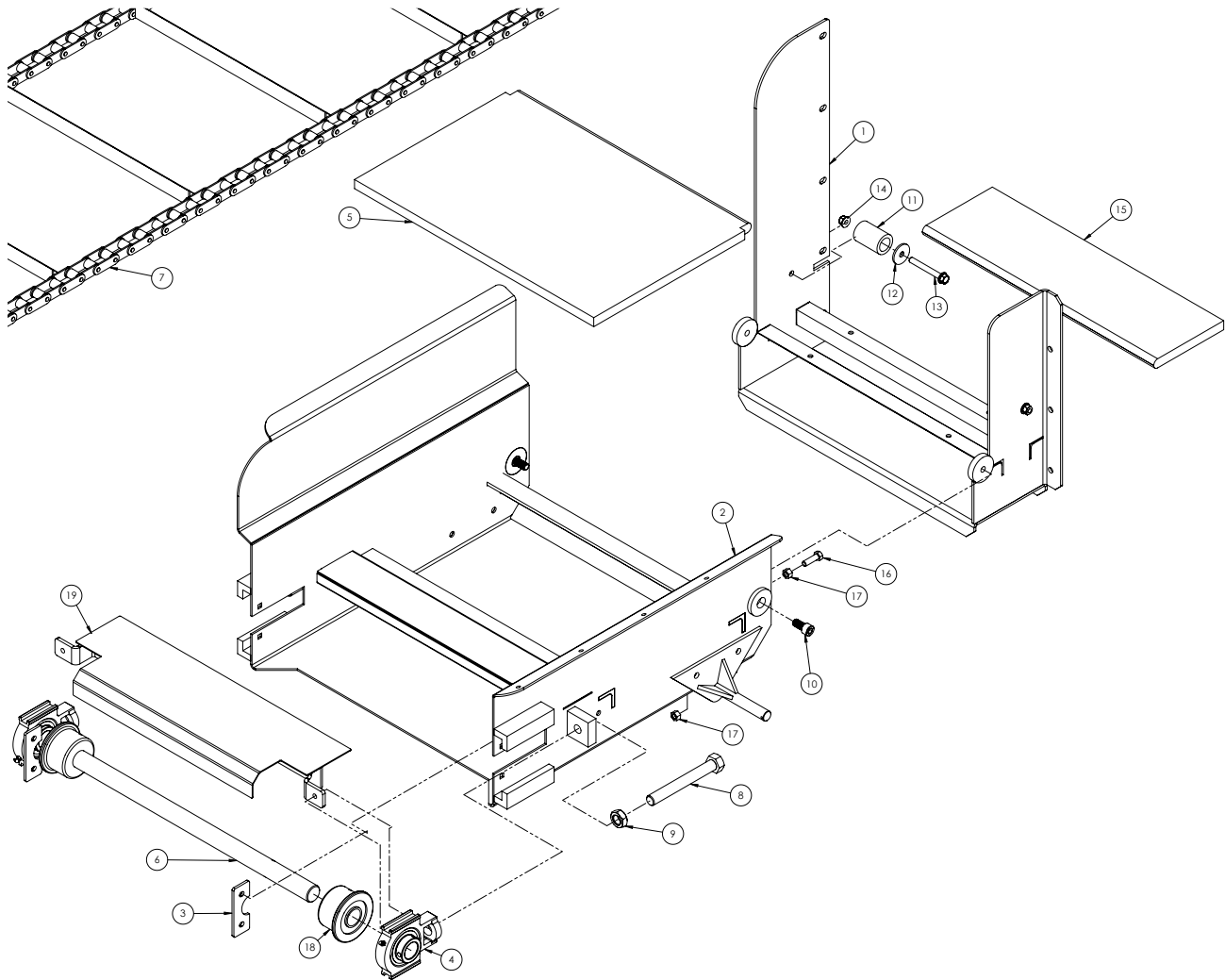


ITEM NO.	PART NUMBER	DESCRIPTION	QTY.
1	631390	FRONT FOR REAR UNLOAD	1
2	632700	PANEL FRONT, W/ WINDOW	2
3	mp09-71112	BOLT, HHCS 5/16-18x3/4	48
4	630050	WINDOW FRAME	2
5	632710	WINDOW FORAGE BOX	2
6	600050	BOLT, HFH 3/8-16 X 1.00"	28
7	600120	NUT, HFH NYLOC 3/8-16	28
8	629130	WLDT, BUSHING WEB	2
9	628230	WLDT, BSHG CENTER	1
10	631020	667X 7T 2"ID	4
11	632730	REAR WEB SHAFT	1
12	628261	CNTR BSHG PLT	1
13	632424	WLDT, APRON SHIELD	1
14	R66305	KEY, SQUARE 1/2" X 2"	4
15	1070124	SCREW, HSSS 1/2-13 x 3/4	4
16	607670	BOLT, HFH 1/2-13 X 2.00"	1
17	600140	NUT, HFH NYLOC 1/2-13	1

FRONT CONVEYOR ASSEMBLY

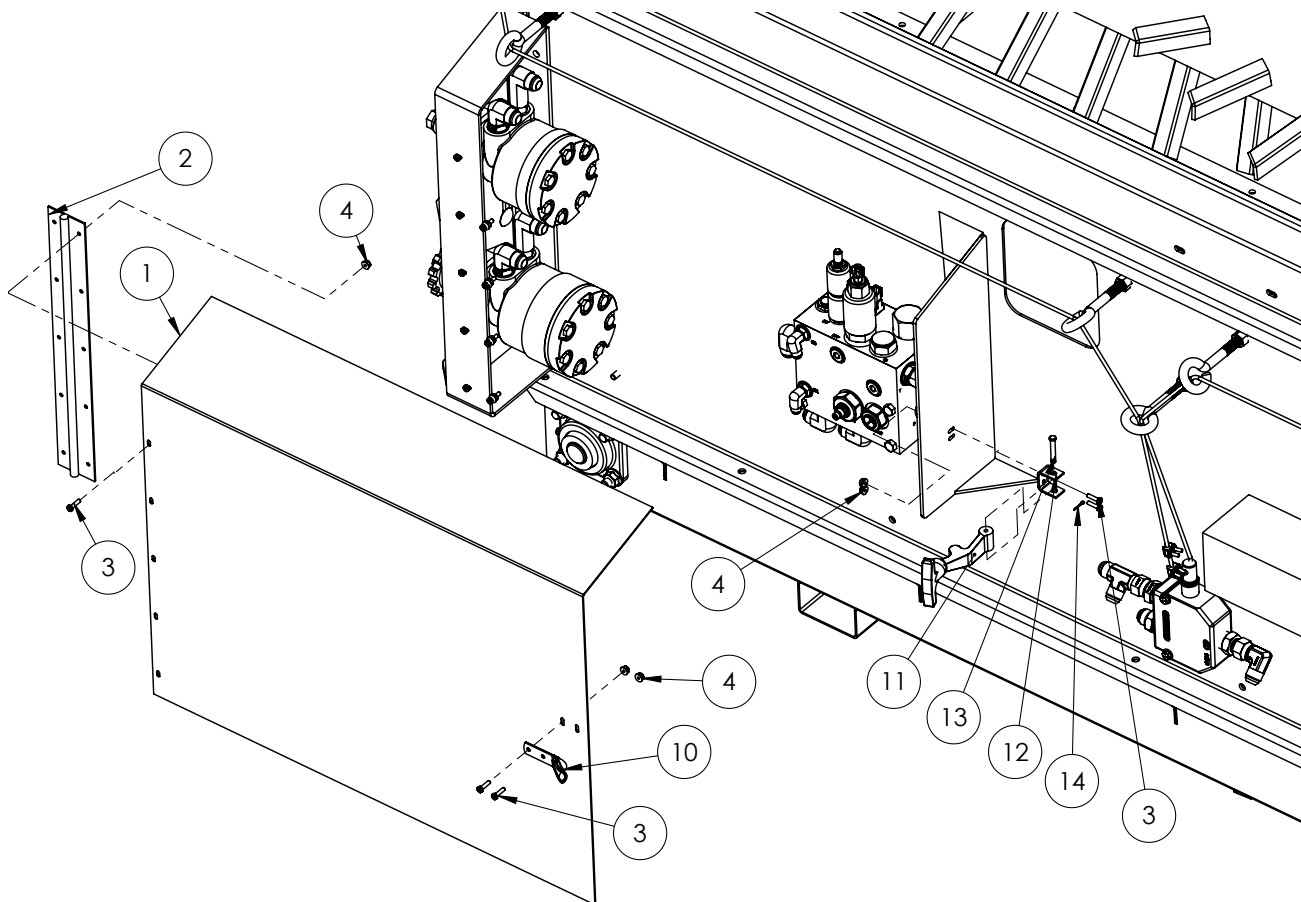
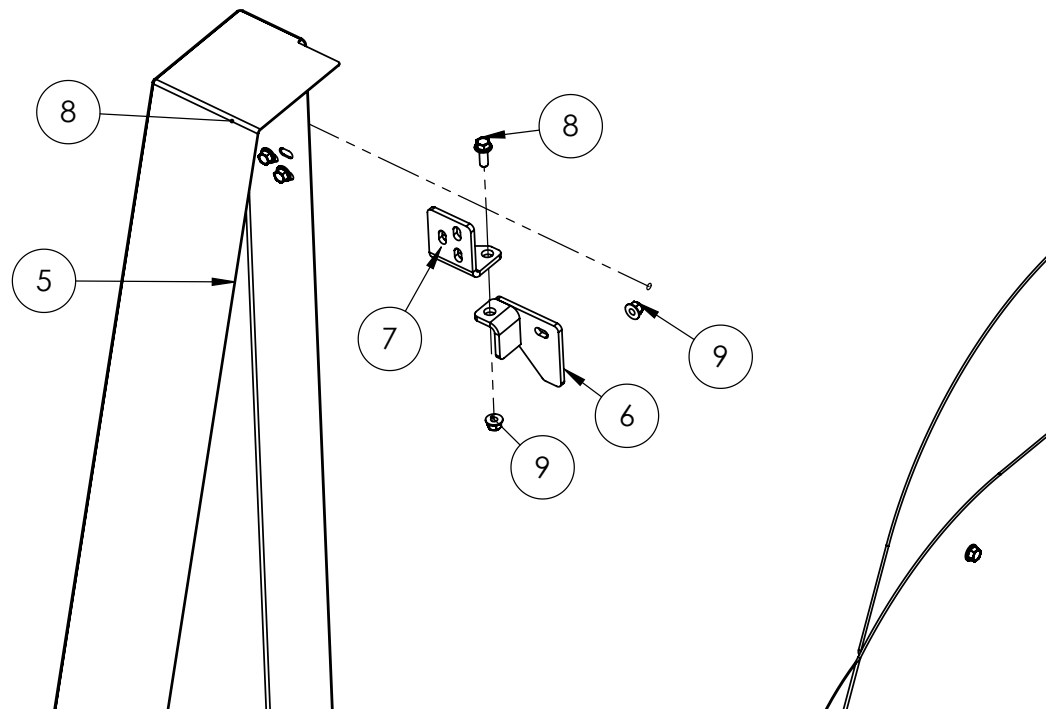


ITEM NO.	PART NUMBER	DESCRIPTION	QTY.
1	629540	FNT CHAIN COVER	1
2	629550	REAR CHAIN COVER	1
3	629360	BEARING, FLG 1-1/4" 4	2
4	631600	FRONT, DISCHARGE DRIVE SFT	1
5	628070	FNT UNLOAD BTM	1
6	631560	WLDT, CROSS-CONV.	1
7	181180	60 X 14T 1.25 ID	2
8	600140	NUT, HFH NYLOC 1/2-13	12
9	600120	NUT, HFH NYLOC 3/8-16	3
10	600580	BOLT, HFH 1/2-13 X 1-1/2"	12
11	020220	KEY, SQUARE 5/16 X 1-1/4	4
12	632650	CA 550 7T 1.25 ID	2
13	631940	MOTOR, CROSS APRON DRIVE	1
14	633370	FORAGE SHIELD CROSS	1
15	mp09-71112	BOLT, HHCS 5/16-18X3/4	5
16	627111	FLOOR, DISCHARGE	1
17	MP907624	SCREW - FHSCS 5/16-18 X	4
18	600110	NUT, HFH NYLOC 5/16-18	4
19	010990	SCREW, HSSS 5/16-18 X 5/16	4

CONVEYOR ASSEMBLY

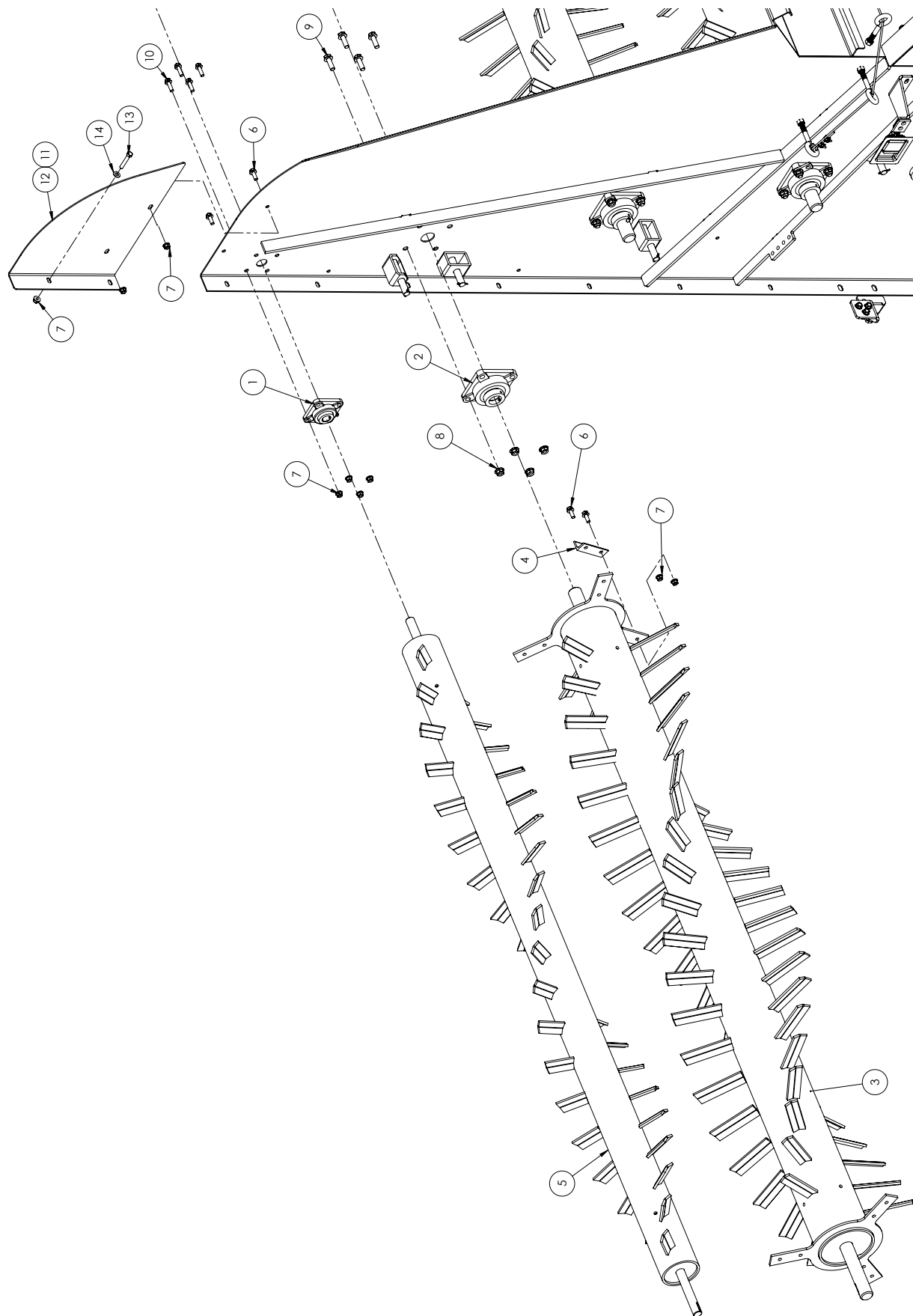
ITEM NO.	PART NUMBER	DESCRIPTION	QTY.
1	627450	SIDE DISCHARGE MNT	1
2	627040	24" DISCHARGE EXT	1
3	627220	FONT SHAFT RETAINER	2
4	627190	1.25" TAKE UP BEARING	2
5	627110	FLOOR, DISCHARGE	1
6	627201	DISCHARGE EXTENSION SHAFT	1
7	634370	DM FB CHAIN FRONT	1
8	511780	BOLT, HHCS 3/4-10 X 7 GR 8 ZN	2
9	E552038	NUT, JAM 3/4-10 HEX	2
10	600710	BOLT, SHCS 1/2-13 X 1"	2
11	629740	BUSHING, SLEEVE UHMW	2
12	169280	WASHER, FLAT, 13/32X1.5X.13	2
13	600080	BOLT, HFH 3/8-16	2
14	600120	NUT, HFH NYLOC 3/8-16	2
15	627112	FLOOR, DISCHARGE 24" EXT	1
16	006690	BOLT, HHCS 3/8-16 X 1-1/4	3
17	027260	NUT, HEX 3/8-16 GR5	6
18	633340	ROLLER, OUTFEED	2
19	633360	SLIP PLATE WELDMENT	1

DOORS AND SHIELDS ASSEMBLY



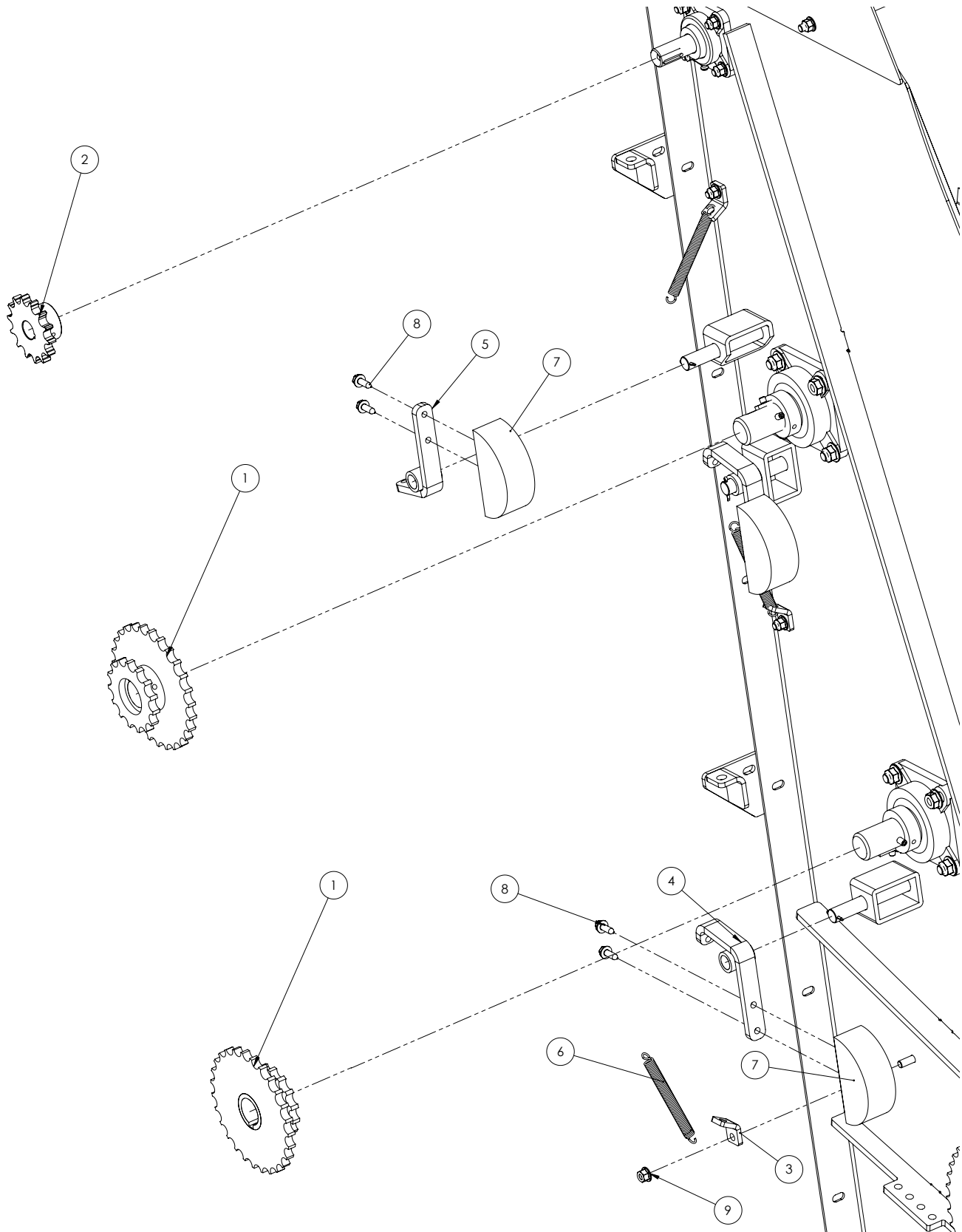
ITEM NO.	PART NUMBER	DESCRIPTION	QTY.
1	629591	FRONT HYD SHIELD	1
2	631810	HINGE SS 2.5"	1
3	421240	BOLT, HHMS #10-24x3/4	14
4	600098	NUT, HFH NYLOC	14
5	632140	WLDT, DOOR, BEATER	1
6	632750	HINGE WLDT	2
7	632160	HINGE, DOOR MNT	3
8	600050	BOLT, HFH 3/8-16 X 1.00"	35
9	600120	NUT, HFH NYLOC 3/8-16	51
10	289290	BRACKET, HOOD	1
11	E504003	LATCH, RUBBER	1
12	625860	ANCHOR,	1
13	215800	PIN, CLEVIS 1/4 x 1 5/8	1
14	116820	PIN, COTTER 1/16 x 3/4	1

FRONT BEATER ASSEMBLY

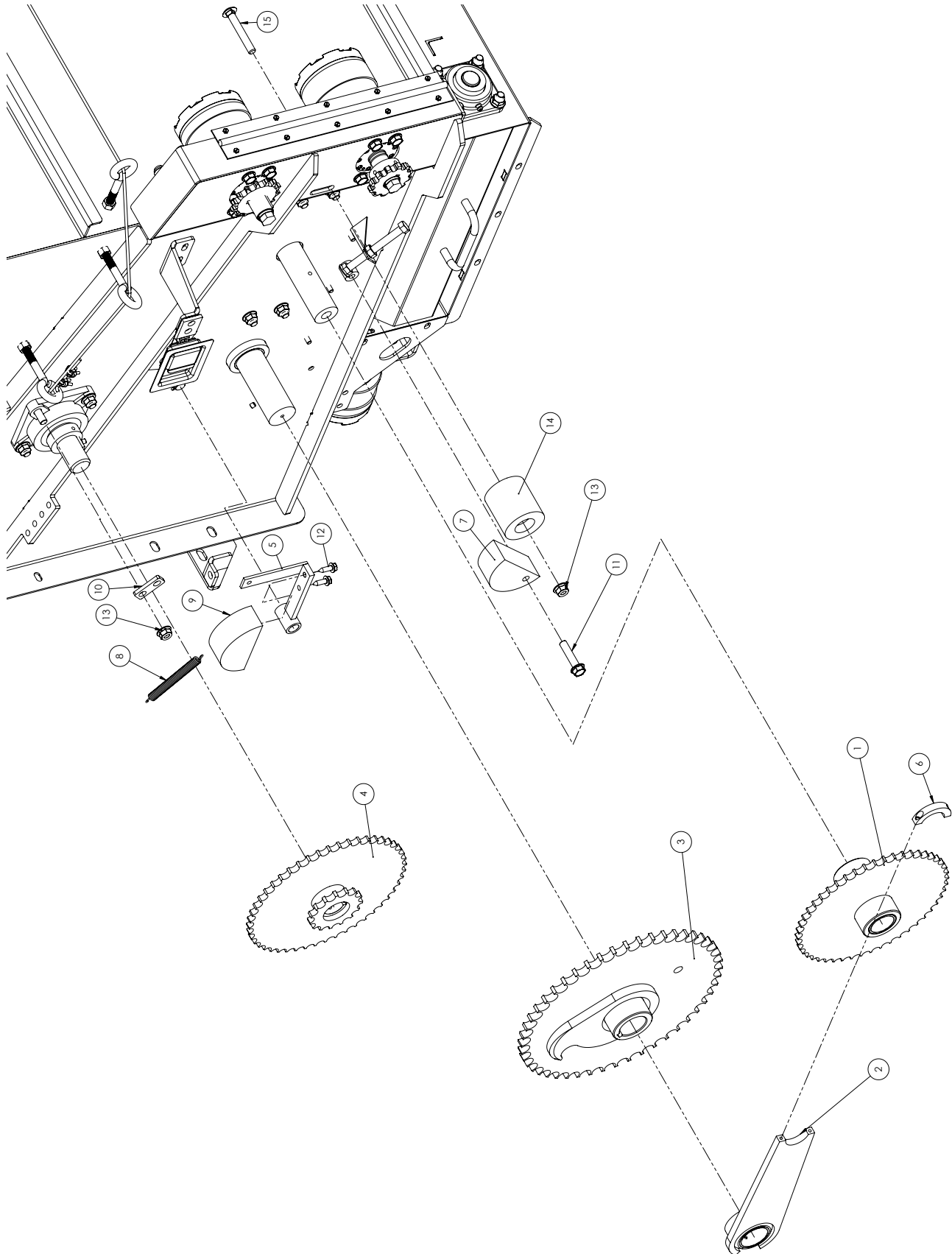


ITEM NO.	PART NUMBER	DESCRIPTION	QTY.
1	629350	BEARING, FLG 1" 4 BOLT	2
2	010560	BEARING ASSEMBLY	6
3	627000	MAIN BEATER	3
4	629290	BEATER PADDLE	6
5	627010	TOP BEATER	1
6	600050	BOLT, HFH 3/8-16 X 1.00"	32
7	600120	NUT, HFH NYLOC 3/8-16	45
8	600140	NUT, HFH NYLOC 1/2-13	45
9	600580	BOLT, HFH 1/2-13 X 1-1/2"	30
10	600280	BOLT, HFH 3/8-16 X 1-1/4"	8
11	631630	LH FRONT SIDE EXT,	1
12	631640	RH, FRONT SIDE EXT,	1
13	029930	BOLT, HHCS 3/8-16 X 2-1/2	2
14	I120394	WASHER, FLAT 3/8 SAE	2

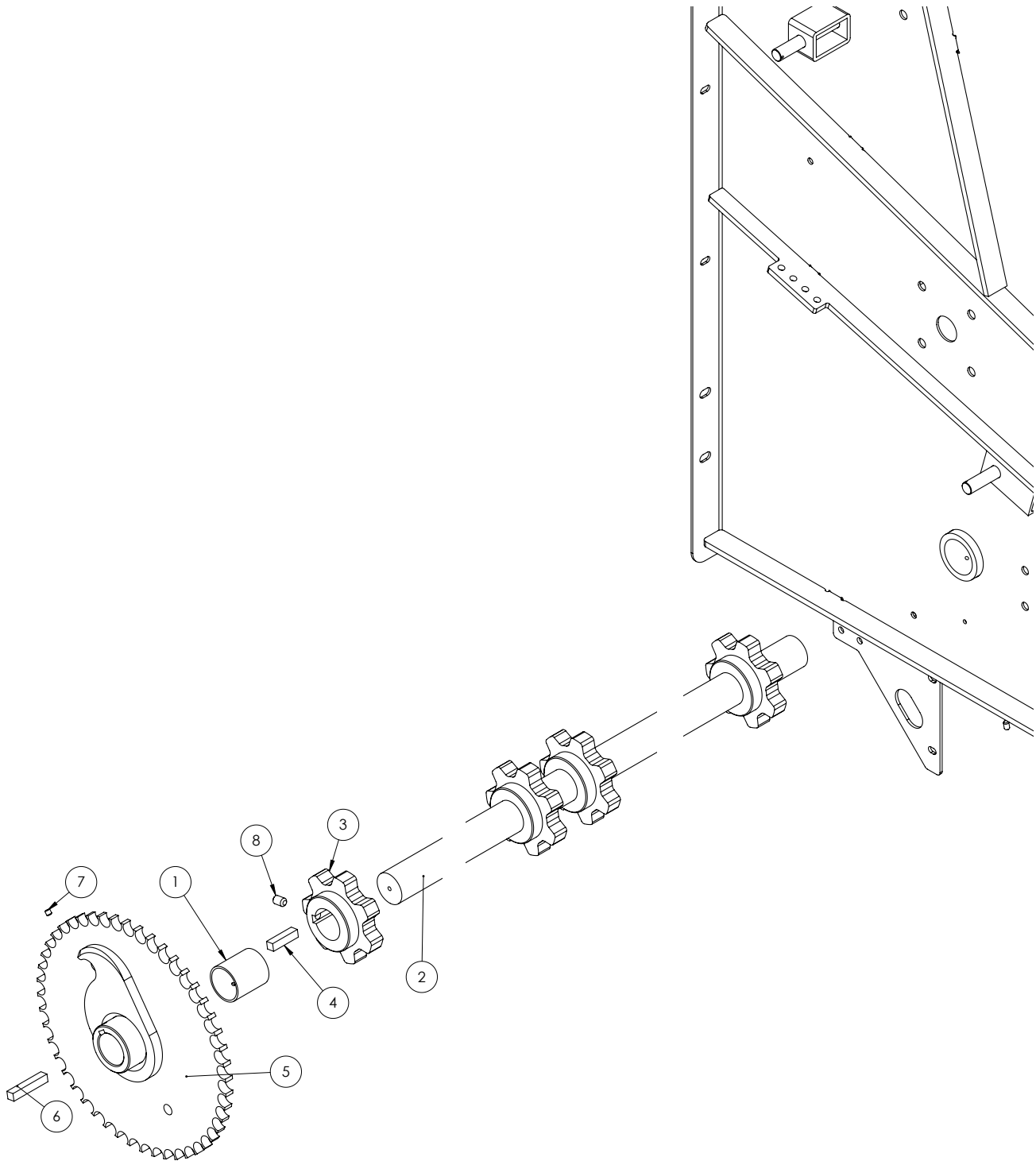
FRONT GEARING UPPER ASSEMBLY



ITEM NO.	PART NUMBER	DESCRIPTION	QTY.
1	630790	BEATER SPROCKET	2
2	343960	SPROCKET, 60B14	1
3	630660	FIXED SPRING TAB	3
4	630680	WLDT, TENSIONER, CHAIN	2
5	630681	WLDT, TENSIONER, CHAIN	1
6	632660	PLACE HOLDER ONLY	4
7	631610	UHMW TENSIONER	4
8	600700	SCREW, HFH LAG, 5/16" X 1"	8
9	600120	NUT, HFH NYLOC 3/8-16	51

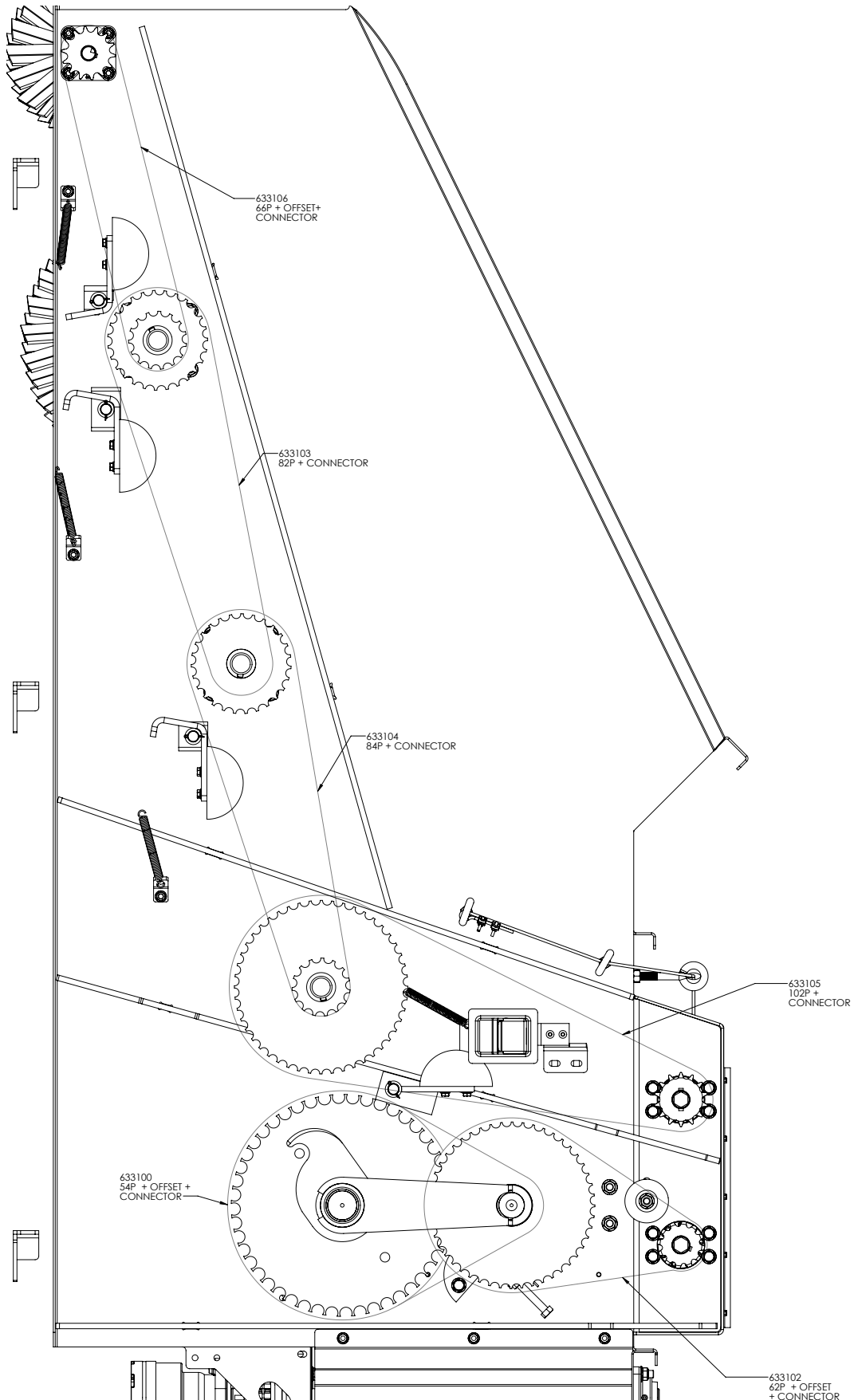
FRONT GEARING LOWER ASSEMBLY

ITEM NO.	PART NUMBER	DESCRIPTION	QTY.
1	629390	FRONT, INTER. SPRKT	1
2	630700	CONECTING ROD WLDT	1
3	629171	APRON DRIVE SPROCKET	1
4	630850	BEATER SPROCKET #60	1
5	630620	WLDT, TENSIONER, CHAIN	1
6	630890	CLAMP, ROD	1
7	631620	UHMW TENSIONER	1
8	632660	PLACE HOLDER ONLY	4
9	631610	UHMW TENSIONER	4
10	632100	TAB, MNT, SPRING	2
11	600290	BOLT, HFH 1/2-13 X 2-1/4"	1
12	600700	SCREW, HFH LAG, 5/16" X 1"	8
13	600140	NUT, HFH NYLOC 1/2-13	57
14	MP26.00021	TENSIONER - 3 X 3.125 UHMW	1
15	V061802	BOLT, CRG 1/2-13 X 3-1/2	1

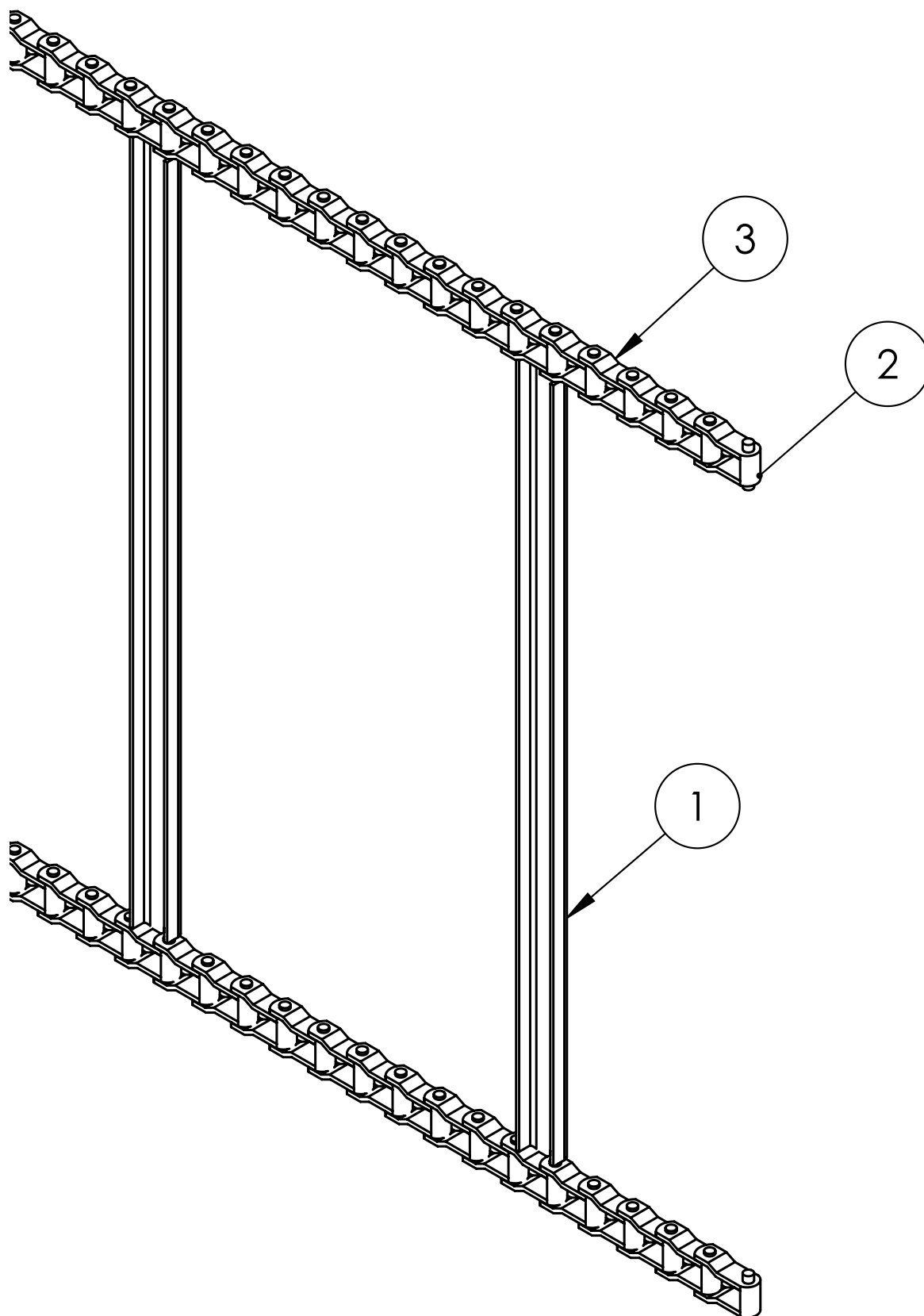
APRON CHAIN FRONT ASSEMBLY

ITEM NO.	PART NUMBER	DESCRIPTION	QTY.
1	629155	2" ID BUSHING ASSY	3
2	629630	FNT WEB DRIVE SHAFT	1
3	631020	667X 7T 2"ID	4
4	R66305	KEY, SQUARE 1/2" X 2"	4
5	629171	APRON DRIVE SPROCKET	1
6	042040	KEY, SQUARE 1/2 X 2-3/4	1
7	010990	SCREW, HSSS 5/16-18 X 5/16	1
8	1070124	SCREW, HSSS 1/2-13 X 3/4	4

CHAIN LOCATIONS

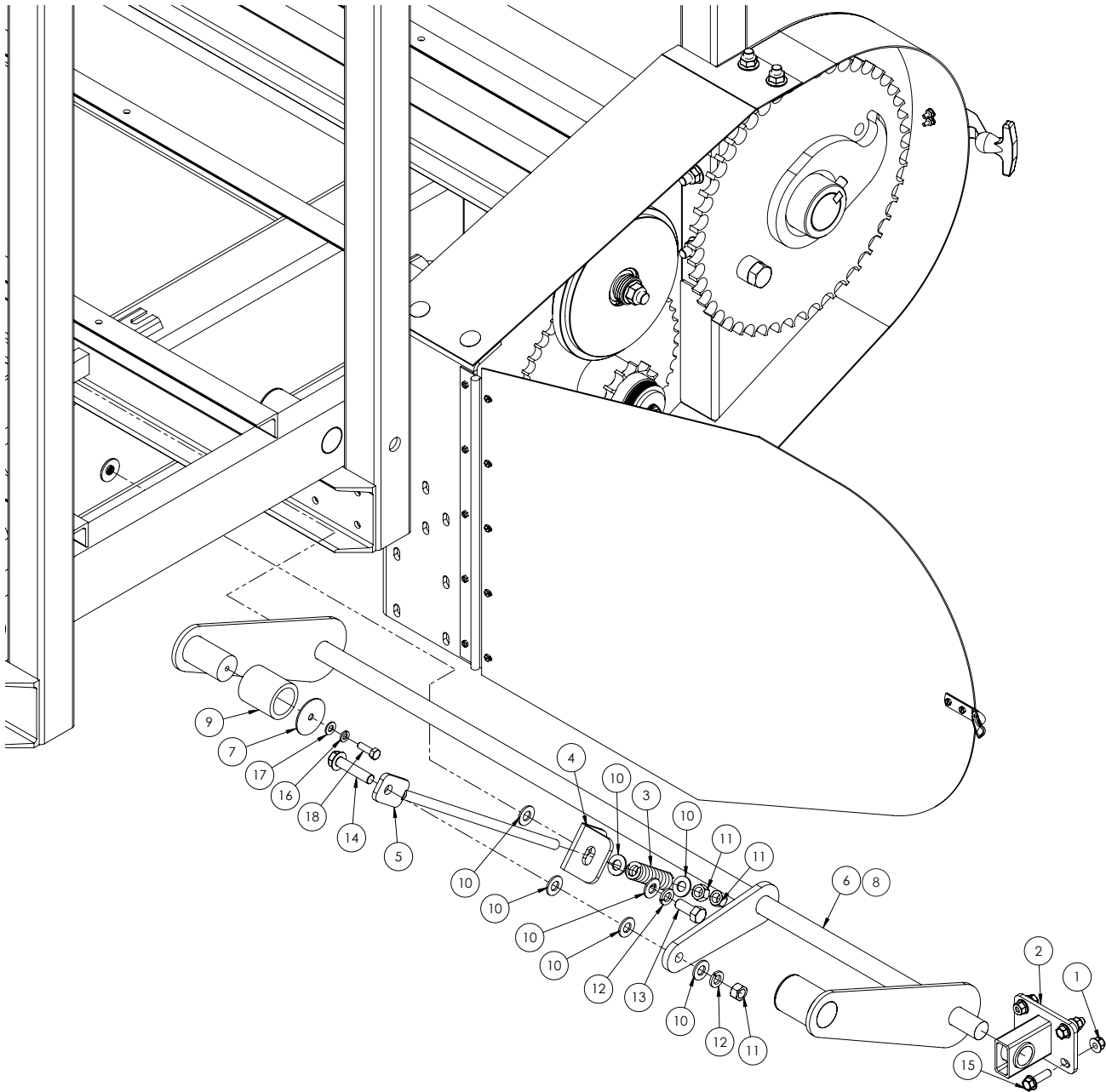


**THIS PAGE
LEFT
INTENTIONALLY
BLANK**

APRON CHAIN

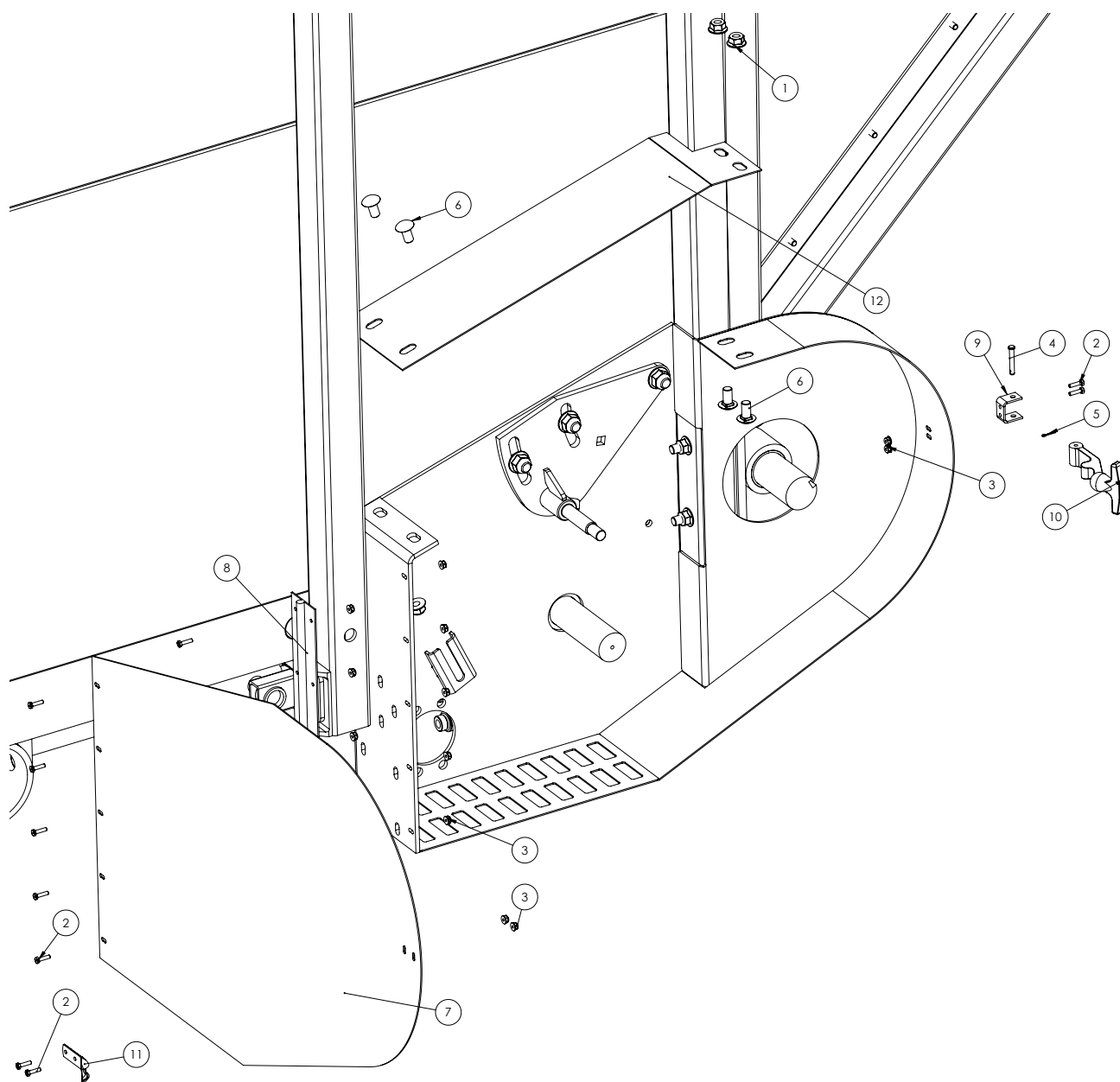
ITEM NO.	PART NUMBER	DESCRIPTION	QTY.
-	633780	22FT COMBO CHAIN	1
1	633700	APRON SLAT 667XH	24
2	634275	667XH CONNECTING LINK W/ PIN	2
3	634270	667XH HEAVY DUTY PINTLE	243 LINKS
-	633740	22FT REAR CHAIN	1
1	633700	APRON SLAT 667XH	23
2	634275	667XH CONNECTING LINK W/ PIN	2
3	634270	667XH HEAVY DUTY PINTLE	234 LINKS
-	633760	24FT COMBO CHAIN	1
1	633700	APRON SLAT 667XH	26
2	634275	667XH CONNECTING LINK W/ PIN	2
3	634270	667XH HEAVY DUTY PINTLE	263 LINKS
-	633750	24FT REAR CHAIN	1
1	633700	APRON SLAT 667XH	25
2	634275	667XH CONNECTING LINK W/ PIN	2
3	634270	667XH HEAVY DUTY PINTLE	254 LINKS

APRON TENSION ASSEMBLY



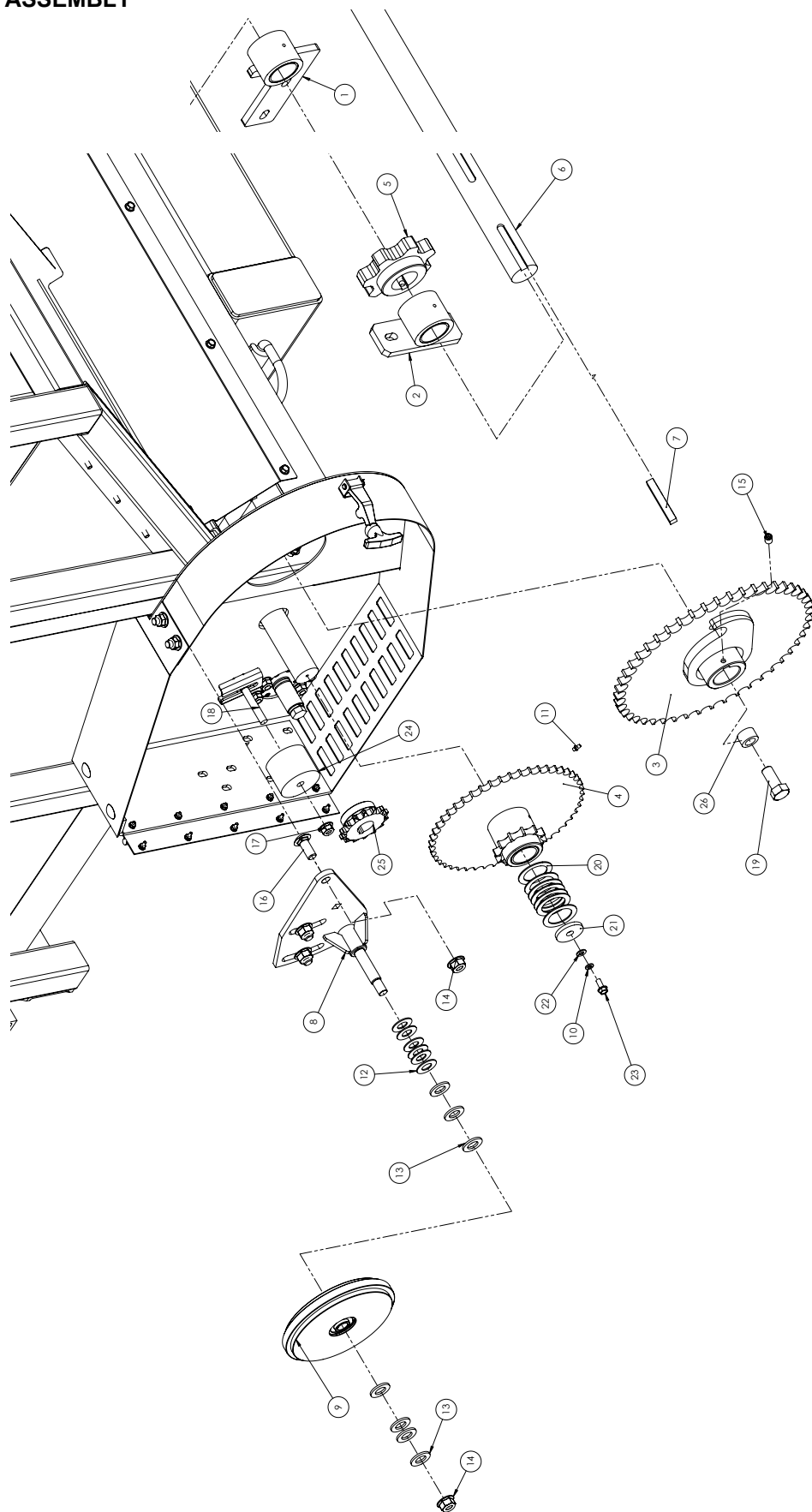
ITEM NO.	PART NUMBER	DESCRIPTION	QTY.
1	600120	NUT, HFH NYLOC 3/8-16	16
2	628220	WLDT, BRKT, WEB TENSION	4
3	631890	SPRING, .94 OD, .19WD, 3	4
4	631880	APRON TENSION ANGLE	4
5	631850	APRON TENSION ROD	4
6	628382	LEFT WLDT TENSIONER	2
7	631870	TENSON ROLLER RETAINER	24
8	628381	RIGHT WLDT TENSIONER	2
9	628960	UHMW ROLLER 2" OD	24
10	005200	WASHER, FLAT 1/2 STD	28
11	005360	NUT, HEX 1/2-13	12
12	005370	WASHER, LOCK 1/2	9
13	010730	HBOLT 1/2-13 X 1.25" GR5 ZN	4
14	600290	BOLT, HFH 1/2-13 X 2-1/4"	4
15	600280	BOLT, HFH 3/8-16 X 1-1/4"	8
16	023620	WASHER, LOCK 5/16	25
17	I120393	WASHER, FLAT 5/16	24
18	005900	BOLT, HHCS 5/16-18 X 1"	24

REAR GEAR GUARD ASSEMBLY

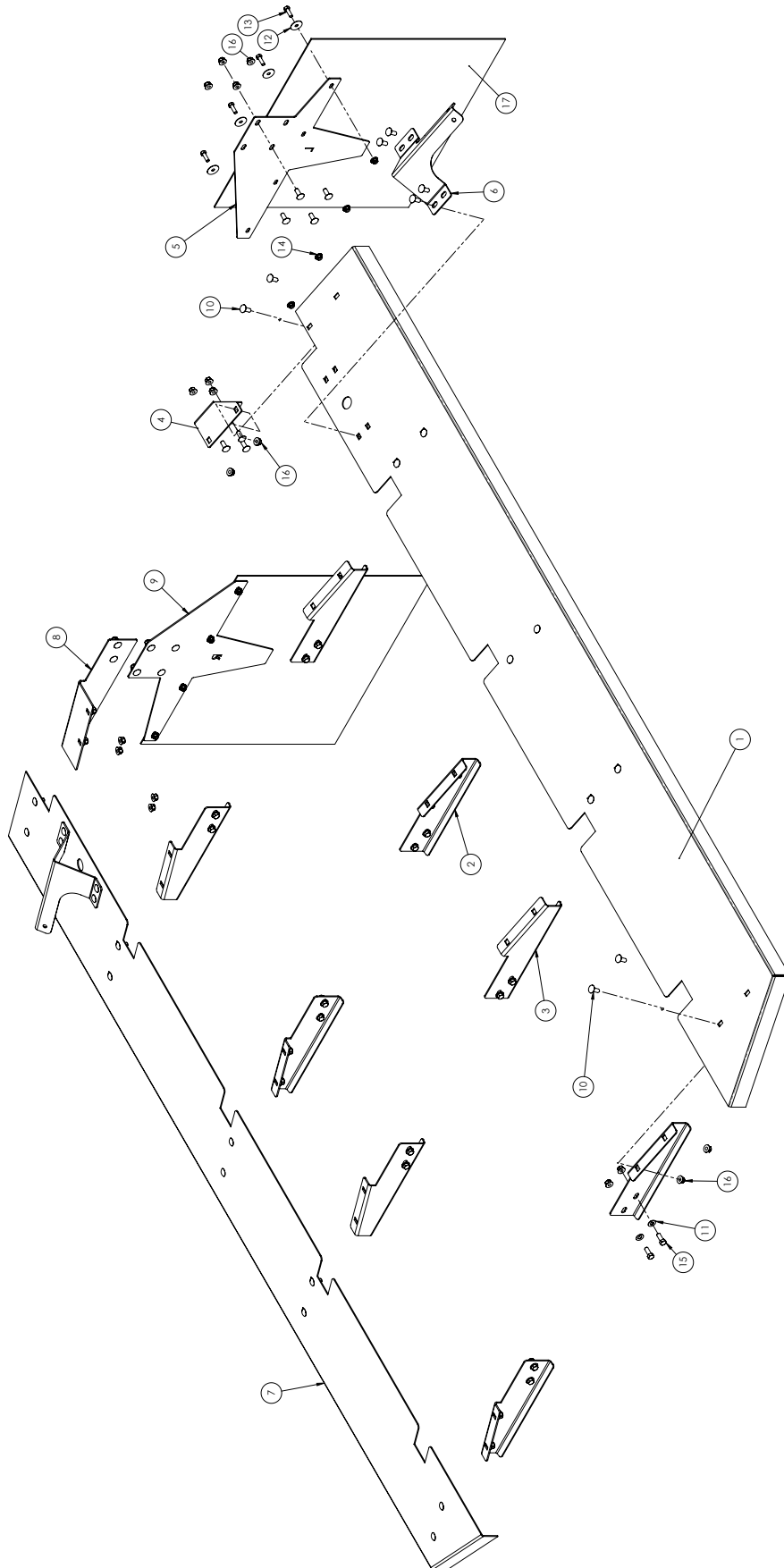


ITEM NO.	PART NUMBER	DESCRIPTION	QTY.
1	600140	NUT, HFH NYLOC 1/2-13	33
2	421240	BOLT, HHMS #10-24X3/4	14
3	600098	NUT, HFH NYLOC	14
4	215800	PIN, CLEVIS 1/4 X 1 5/8	1
5	116820	PIN, COTTER 1/16 X 3/4	1
6	005390	BOLT, CRG 1/2-13 X 1 SSN GR5 ZN	4
7	633630	REAR SHIELD DOOR	1
8	631810	HINGE SS 2.5"	1
9	625860	ANCHOR,	1
10	E504003	LATCH, RUBBER	1
11	289290	BRACKET, HOOD	1
12	633620	REAR SHIELD BOLT ON	1

REAR GEAR ASSEMBLY

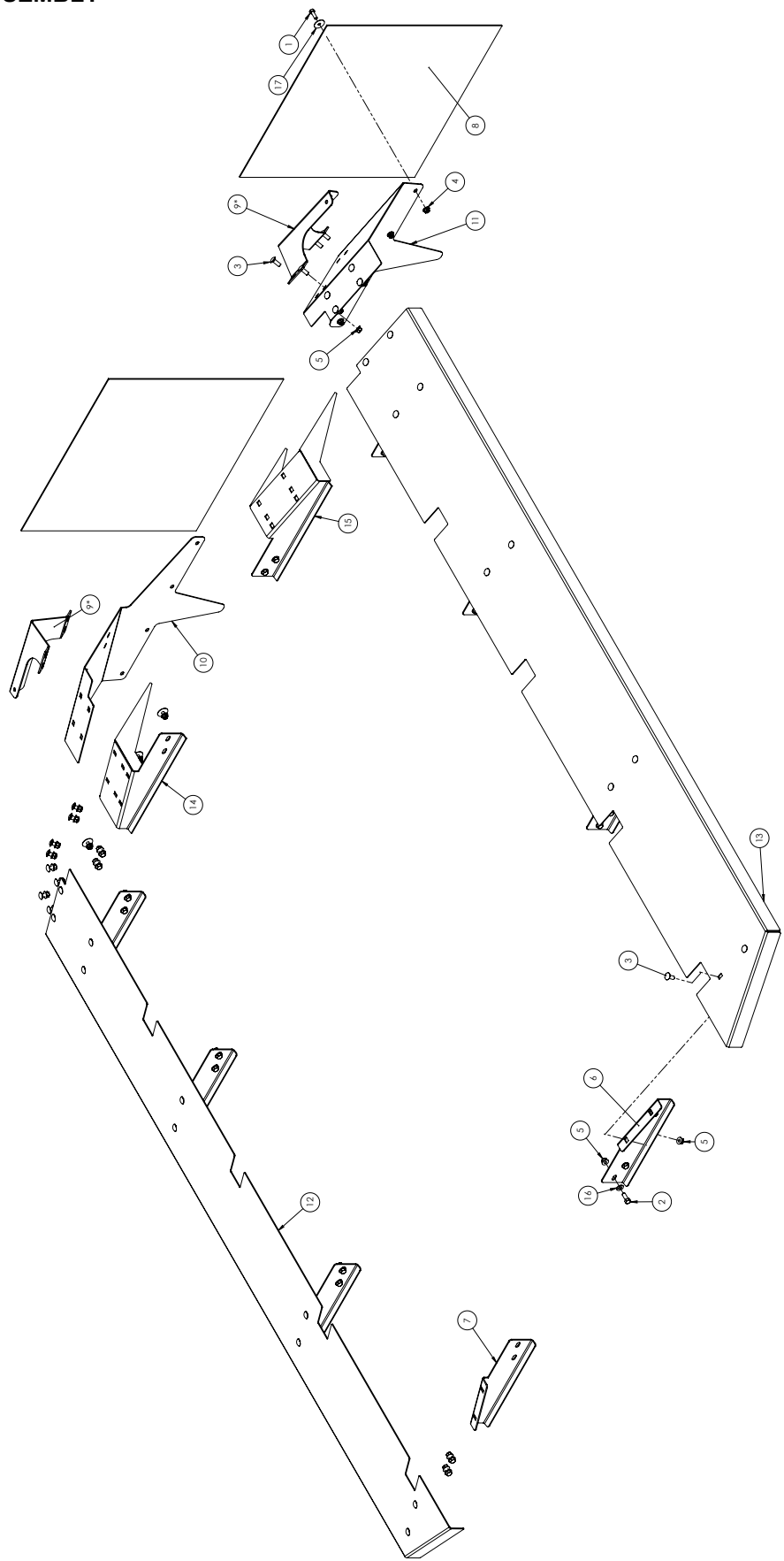


ITEM NO.	PART NUMBER	DESCRIPTION	QTY.
1	628230	WLDT, BSHG CENTER	1
2	629130	WLDT, BUSHING WEB	2
3	629171	APRON DRIVE SPROCKET	1
4	628210	REAR INTER. SPROCKET	1
5	631020	667X 7T 2"ID	4
6	628840	REAR WEB SHAFT	1
7	JA20595R	KEY, SQU. 1/2" X 3-1/2"	1
8	633480	IDLE ROLLER WLDT	1
9	633440	IDLEMASTER ASSEMBLY	1
10	023620	WASHER, LOCK 5/16	25
11	115590	FITTING, GREASE	4
12	034800	WASHER, FLAT	6
13	I131017	WASHER, FLAT	7
14	600150	NUT, HFH NYLOC 5/8-11	4
15	1070124	SCREW, HSSS 1/2-13 X 3/4	5
16	I467657R1	BOLT, CRG 5/8-11	3
17	600140	NUT, HFH NYLOC 1/2-13	15
18	MP903921	BOLT, CRG 1/2-13 X 3	1
19	990530	HBOLT 0.7500-10X5.5 GR5 ZN	1
20	MP09-70987	WASHER FLAT 1-3/4, 2-1/2, 14GA	7
21	I486801R1	WASHER, FLAT 1/2	1
22	022920	WASHER, FLAT 5/16 STD	1
23	JN10212	SCREW, FLG 5/16-18 X 3/4	1
24	mp26.00020	TENSIONER, UHMW	1
25	181180	60 X 14T 1.25 ID	1
26	629220	DRIVE BUSHING	1

22' FENDER ASSEMBLY

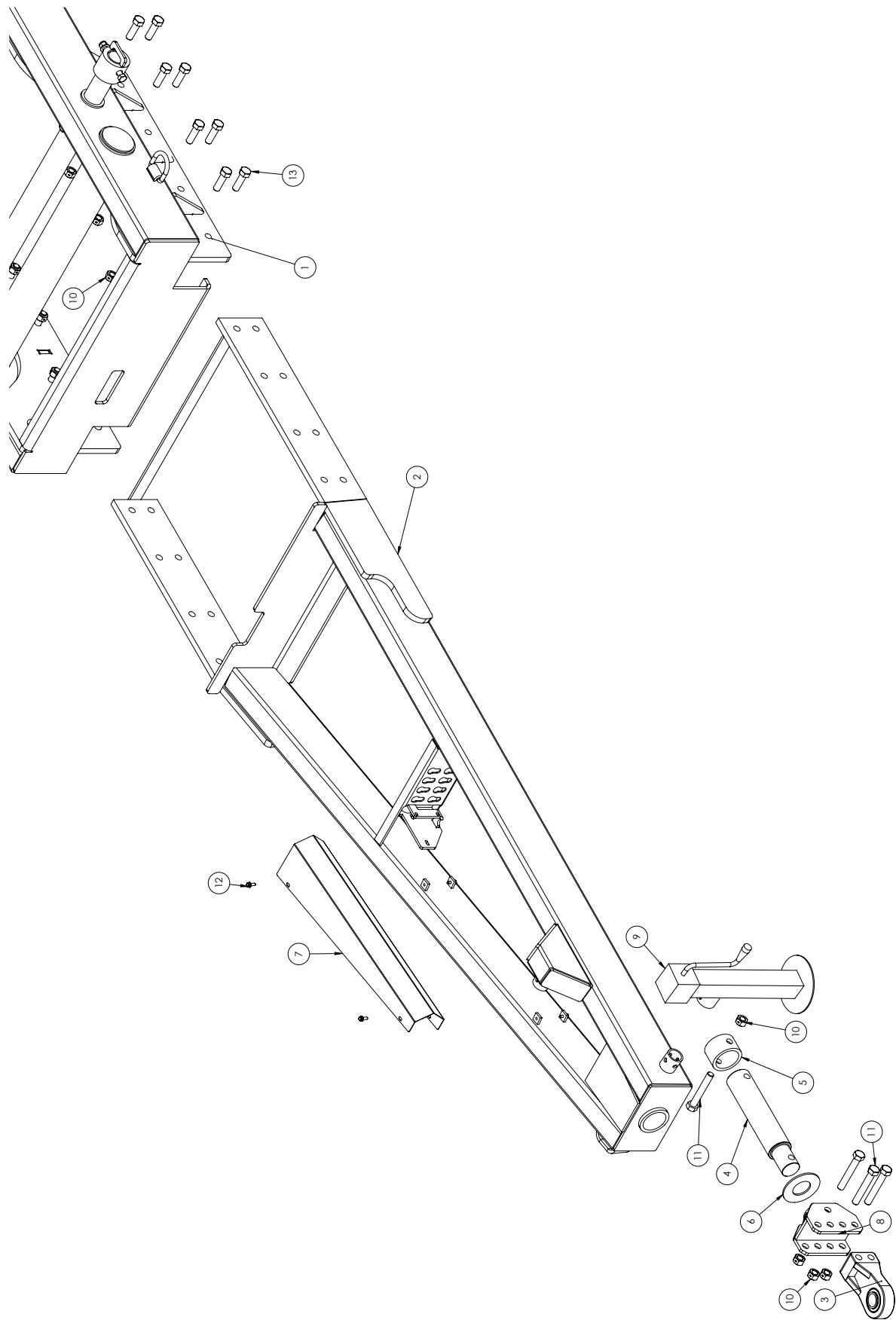
ITEM NO.	PART NUMBER	DESCRIPTION	QTY.
1	633685	PLT, FENDER, LH	1
2	631450	FENDER BRACKET, LH	4
3	631470	FENDER BRACKET, RH	4
4	633645	MOUNTING BRACKET	1
5	633655	MUDFLAP BRACKET	1
6*	633670	LH 22 FT MNT WRK	2
7	633680	FENDER 22'	1
8	633640	FENDER BRACKET	1
9	633650	MUD FLAP BRACKET	1
10	170530	BOLT, CRG 3/8-16 X 1"	41
11	I120394	WASHER, FLAT 3/8 SAE	16
12	MP300439B1	WASHER, FENDER 5/16	8
13	005900	BOLT, HHCS 5/16-18 X 1"	8
14	600110	NUT, HFH NYLOC 5/16-18	8
15	012260	BOLT, HHCS 3/8-16 X 1	16
16	600120	NUT, HFH NYLOC 3/8-16	57
17	632680	MUD FLAP, ART'S WAY	2
*INCLUDED WITH WORK LIGHTS KIT, NOT INCLUDED WITH FENDERS			

24' FENDER ASSEMBLY

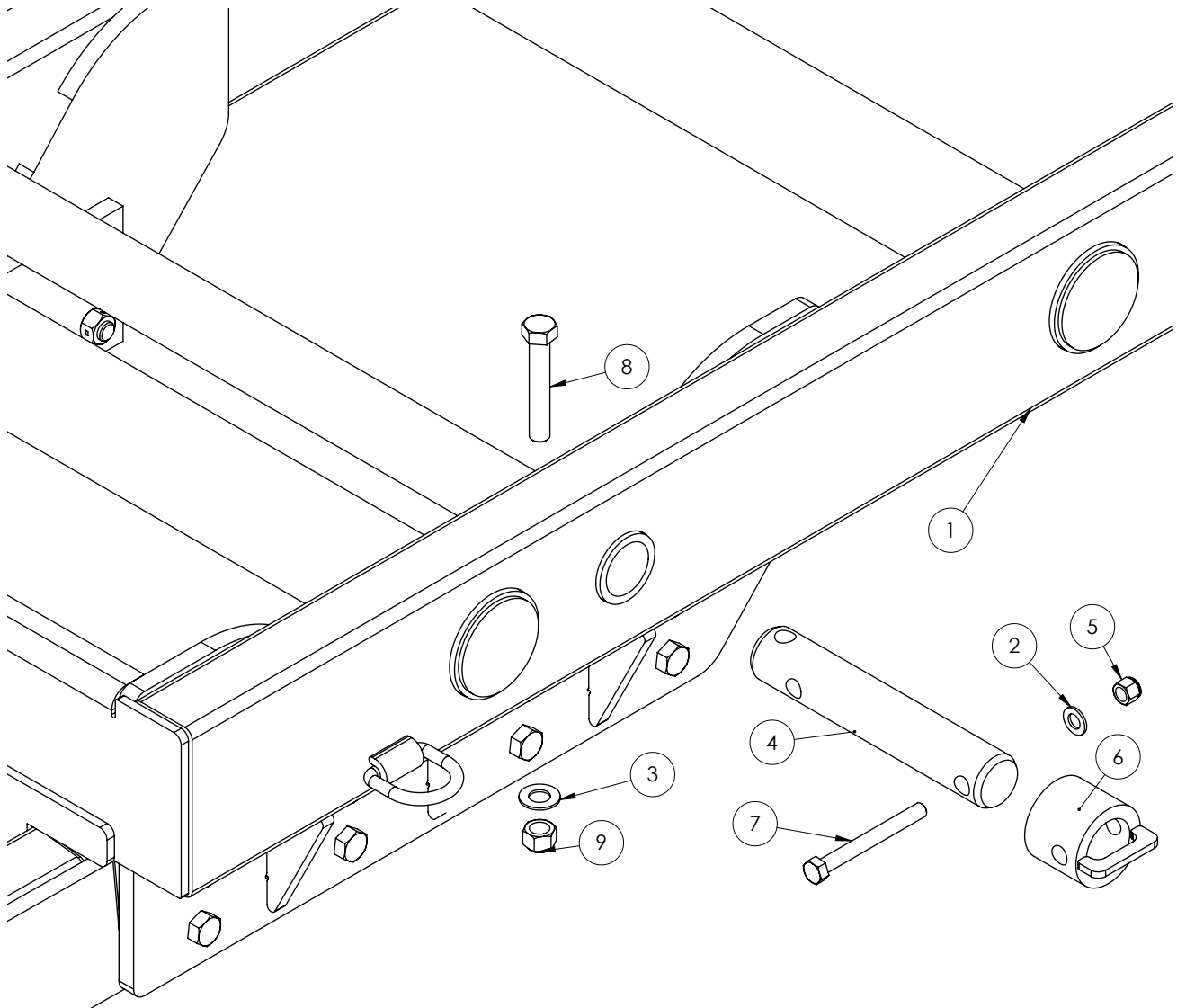


ITEM NO.	PART NUMBER	DESCRIPTION	QTY.
1	005900	BOLT, HHCS 5/16-18 X 1"	8
2	012260	BOLT, HHCS 3/8-16 X 1	20
3	170530	BOLT, CRG 3/8-16 X 1"	36
4	600110	NUT, HFH NYLOC 5/16-18	8
5	600120	NUT, HFH NYLOC 3/8-16	56
6	631450	FENDER BRACKET, LH	4
7	631470	FENDER BRACKET, RH	4
8	632680	MUD FLAP, ART'S WAY	2
9*	633670	LH 22 FT MNT WRK	2
10	633690	24FT RH MUD FLAP MNT	1
11	633695	24 FT LH MUD FLAP MNT	1
12	634420	RH FENDER 24FT	1
13	634425	LH FENDER 24 FT	1
14	634430	WLDT 24 FT RH FENDER	1
15	634435	WLDT 24 FT LH FENDER	1
16	I120394	WASHER, FLAT 3/8 SAE	20
17	MP300439B1	WASHER, FENDER 5/16	8
*NOT INCLUDED WITH FENDER KIT, INCLUDED WITHWORK LIGHT KIT			

TONGUE ASSEMBLY

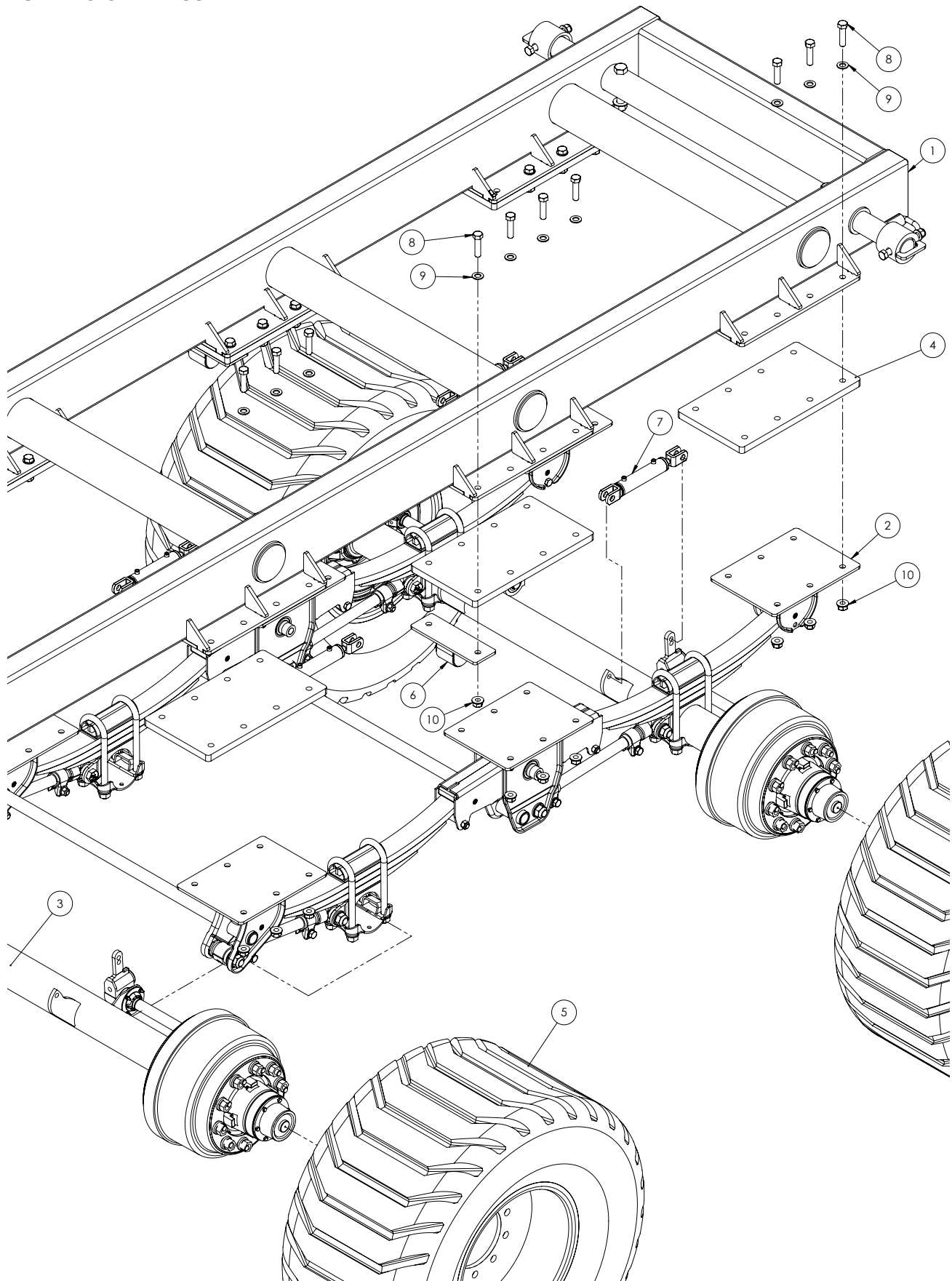


ITEM NO.	PART NUMBER	DESCRIPTION	QTY.
1	627240	WLDT, FRAME TRAILER	1
2	631080	WLDT, BOLT ON TONGUE	1
3	576420	HITCH, SPH. PINTLE	1
4	H160075	SWIVEL SHAFT	1
5	H160077	SWIVEL HITCH STOP	1
6	H160076	SWIVEL HITCH WASHER	1
7	627460	HOSE SHIELD COM FB	1
8	621060	HITCH 4 HOLE	1
9	630900	JACK, NICKEL PLATED	1
10	990510	NUT, LOCK 2-WAY 1-8	20
11	J08H4722	BOLT, HHCS 1-8 x 6 1/2 GR8 ZN	4
12	600050	BOLT, HFH 3/8-16 X 1.00"	4
13	268730	BOLT, HHCS 1-8 X 3, GR8	16

TONGUE BAR ASSEMBLY

ITEM NO.	PART NUMBER	DESCRIPTION	QTY.
1	627240	WLDT, FRAME TRAILER	1
2	I131017	WASHER, FLAT	44
3	1107389	WASHER, FLAT 1 SAE	4
4	631000 OR 628180	DUMMY BAR COM FB	4
5	1100238	NUT, NYLOK 3/4-10 UNC	4
6	628090	SLEEVE WEIGH BAR	4
7	479980	BOLT, HHCS 3/4-10 x 7 GR 8 ZN	4
8	600490	BOLT, HHCS 1-8 X 6"	4
9	MP09-70791	NUT- LOCK 1-8 JAM NYL INSERT	4

RUNNING GEAR ASSEMBLY

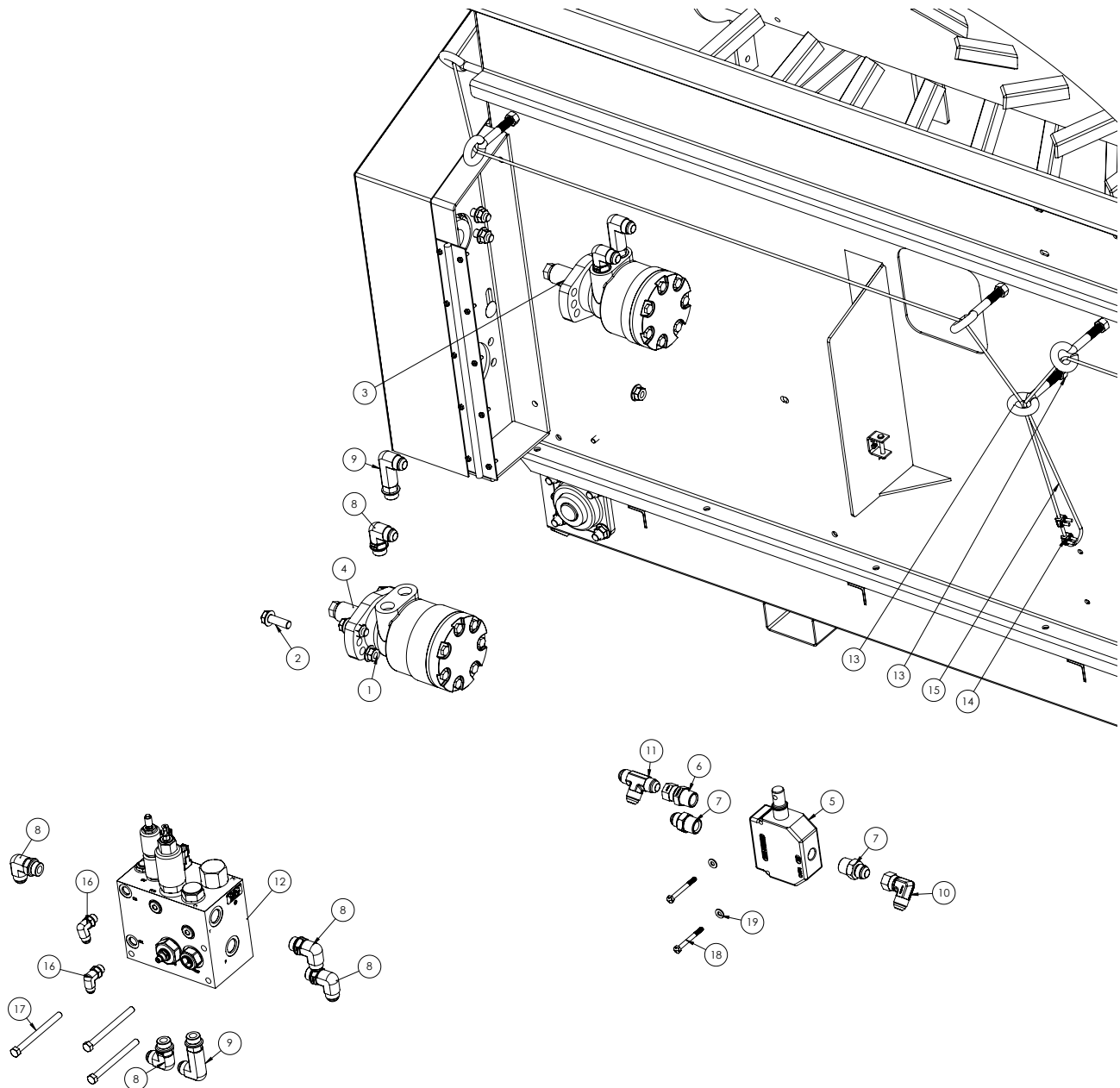


ITEM NO.	PART NUMBER	DESCRIPTION	QTY.
1	627240	WLDT, FRAME TRAILER	1
2	627430	HUTCH SUSPENSION W/	1
3	627420	DEXTER AXLE	2
4	627541	SPACER COM FB	6
5	629800	RIM AND TIRE ASSY 700/40	2
6	628040	BUMP STOP WLDT	2
7	631950	1.5" X 4" CYLINDER	4
8	990570	BOLT, HHCS 3/4-10 x 3	40
9	I131017	WASHER, FLAT	44
10	600160	NUT, HFH TOPLOCK 3/4-10	40

ITEM NO.	PART NUMBER	DESCRIPTION	QTY.
1	1795104	NUT, HEX 5/8-18 GRB PLN	3
2	592500	BOLT, HHCS 1-14 X 5 GR5	4
3	627411	LEAFSEAT HUTCH 9700	2
4	627412	BOTTOM PLATE HUTCH 9700	2
5	627413	TOP PLATE HUTCH 9700	2
6	627414	U-BOLT 7/8" HUTCH 9700	4
7	627415	NUT HFH 1-14 UNS, GRF,	4
8	627416 OR 627417	RADIUS ROD FNT ADJ / RIGID	1
9	627419	SLEEVE SPACER 3/4OD 18GA	3
10	627418	RADIUS ROD REAR W/BUSHIN	1
11	627440	3 LEAF HD LOW ARCH	2
12	627495	REAR HANGER W/MOUNT	1
13	627500	WLDT FNT SUSPENSION HNGR	1
14	627505	MIDDLE HANGER ASSY W/MNT	1
15	I131018	WASHER, FLAT 7/8 SAE ZN	8
16	I4141072	BOLT, HHCS 5/8-18 X 4-1/	3
17	I9403295	NUT, 7/8-14	8

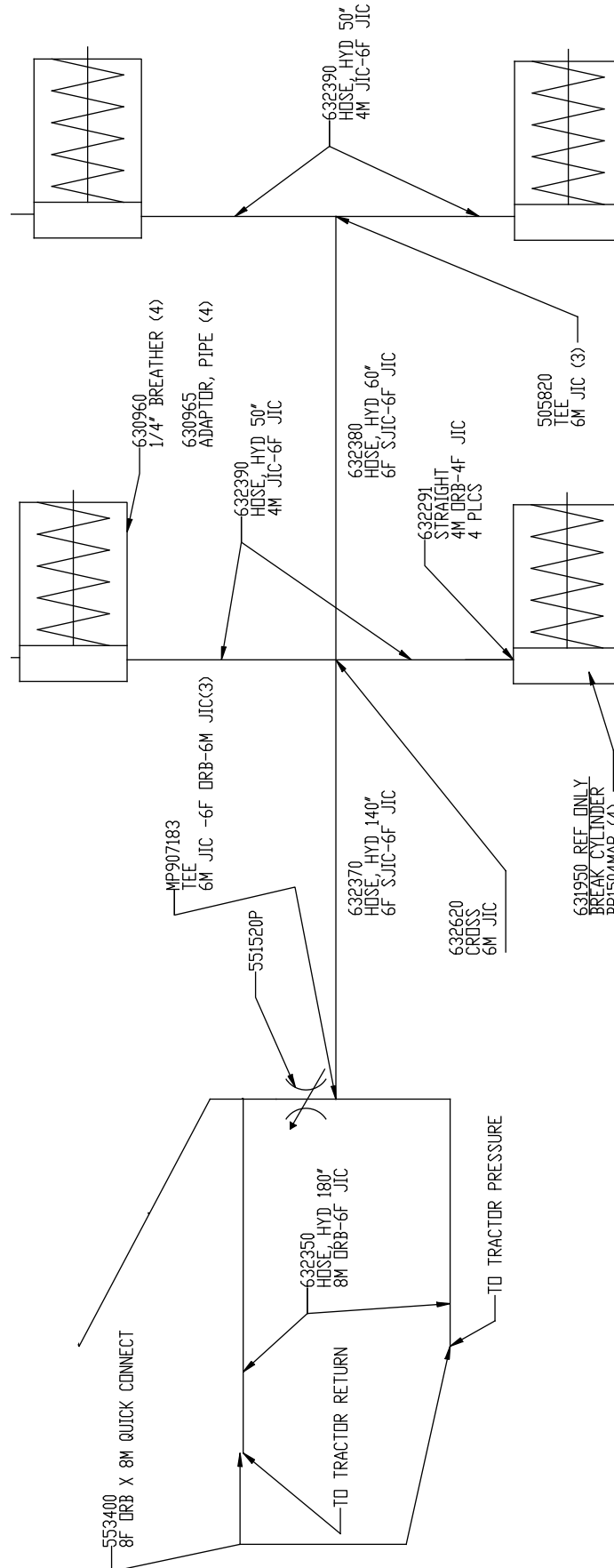
ITEM NO.	PART NUMBER	DESCRIPTION	QTY.
1	627425	AXLE WLDT PURCHASED	1
2	025770	WASHER, MACH 1.25 X 1.87	2
3	627426	HUB 10 BOLT 11.25 W/	1
4	627600	STUD MED M22 X 1.5	20
5	627601	NUT, SWIVEL FLANGE	20
6	627427	DRUM, BREAK 10 BOLT	2
7	627423	S CAM REPAIR KIT	2
8	627424	ALUMINUM HUBCAP + GASKET	2
9	627421	S CAM LH ASSY COM FB	1
10	627422	S CAM RH ASSY COM FB	1
11	627428	BREAK SHOE	4
12	627429	SLACK ADJUSTER 7"MANUAL	2
13	042960	HBOLT 0.2500-20X1X1-N	8
14	027660	NUT, HEX 1/4-20 GR5 ZN	8
15	029440	WASHER, LOCK 1/4 SAE	20
16	012140	BOLT, HHCS 5/16-18 X 3/4	12
17	627870	BRAKE, CYL BRKT	2

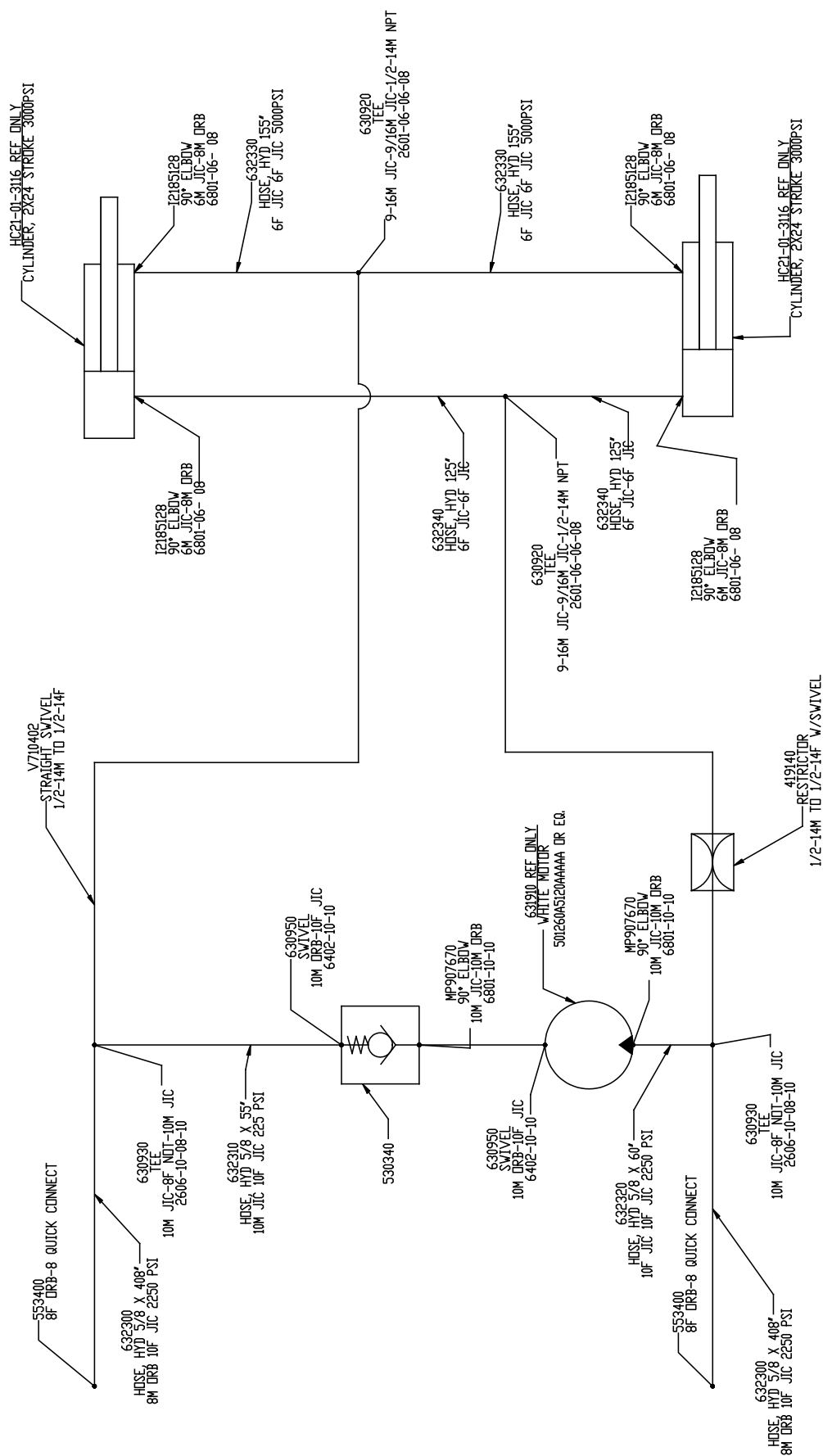
FRONT HYDRAULIC ASSEMBLY



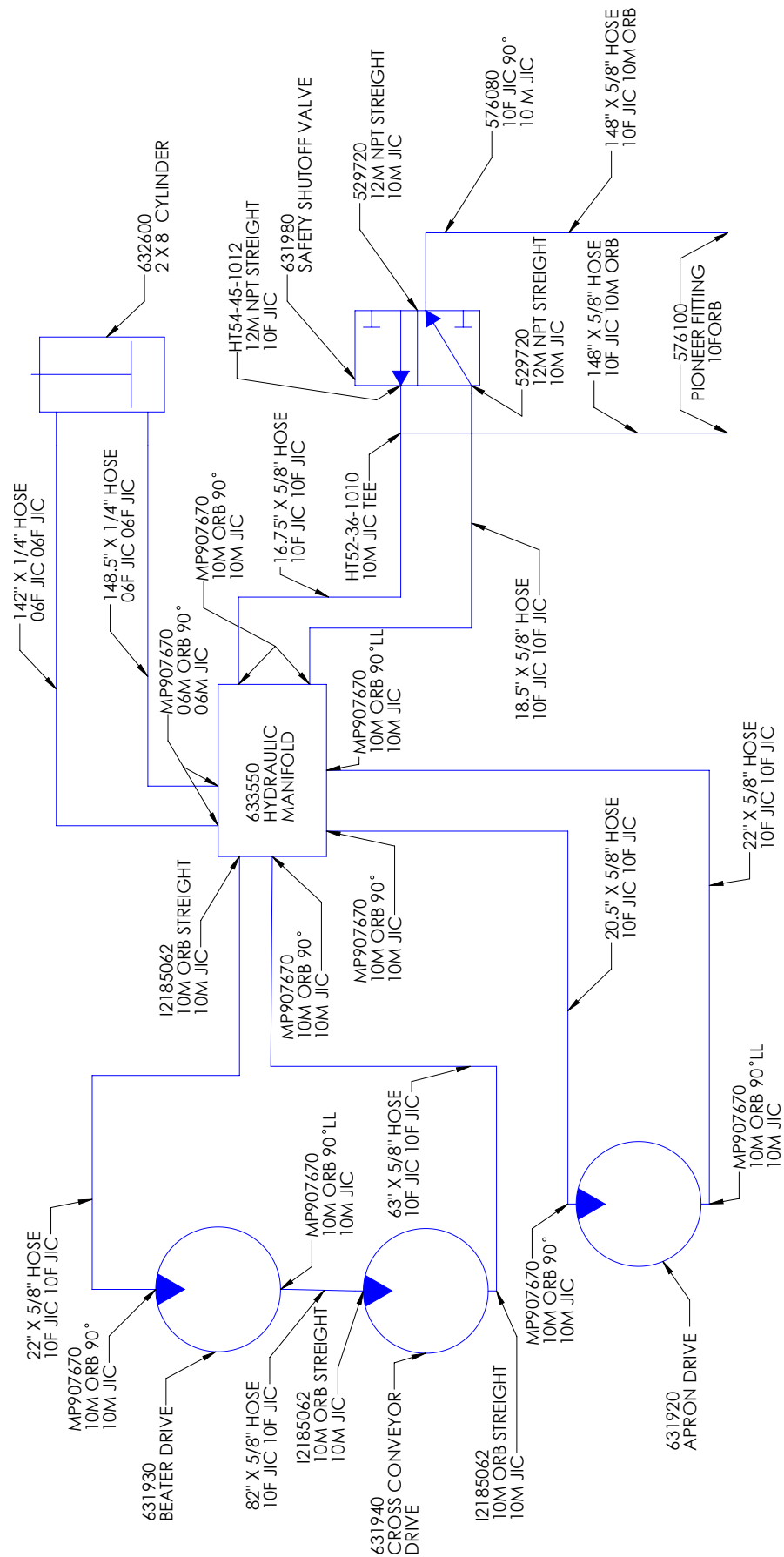
ITEM NO.	PART NUMBER	DESCRIPTION	QTY.
1	600140	NUT, HFH NYLOC 1/2-13	57
2	600580	BOLT, HFH 1/2-13 X 1-1/2"	42
3	631930	BEATER DRIVE MOTOR	1
4	631920	FRNT APRON DRIVE MOTOR	1
5	631980	SAFETY SHUT OFF	1
6	HT54-45-1012	FITTING, HYD STRAIGHT	1
7	529720	FITTING, HYD STRAIGHT	2
8	MP907670	FITTING, HYD 90°	6
9	591990	ELBOW, 90° X-LONG -10 ORB X -10	3
10	576080	Fitting, HYD 90 , -10M JIC, -10F JIC	1
11	HT52-36-1010	Fitting, HYD TEE, -10MIC(3)	1
12	633550_s	HYD MANIFOLD	1
13	290935	BOLT, EYE 1/2-13 X 6	8
14	129260	Clip, 1/8" Malleable Wire	6
15	MP11.77120 15FT	Vinyl Cable	1
16	MP07.17946	Fitting, 90 DEG -6MJIC -6MORB	2
17	991160	BOLT, HHCS 3/8-16 x 4"	3
18	017050	Bolt, HHCS 1/4-20 x 2-1/2 GR5	2
19	I120392	WASHER, FLAT 5/16	2

HYDRAULIC SCHEMATICS





**THIS PAGE
LEFT
INTENTIONALLY
BLANK**



NOTES:

Blank lined paper with a faint background watermark.

[illegible]

NOTES:

NOTES:



Art's-Way Manufacturing Co., Inc. TECHNICAL MANUALS

Manuals are available from your local dealer or Art's-Way Manufacturing Co., Inc. for the operation, service, and repair of your machine. For prompt convenient service, contact your local dealer for assistance in obtaining the manuals for your machine.

Your local dealer can expedite your order for operator manuals, illustrated parts catalogs, service manuals, and maintenance records.

Always give the Machine Name, Model, and Serial Number so your local dealer can provide the correct manuals for your machine.

Art's-Way Manufacturing Co., Inc. reserves the right to make improvements in design or changes in specifications at any time without incurring any obligation to install them on units previously sold.

Except as expressly authorized, no part of this manual may be reproduced, copied, transmitted, disseminated, downloaded or stored in any storage medium, for any purpose without the express prior written consent of Art's-Way Manufacturing Co., Inc.

ART'S-WAY MANUFACTURING CO., INC.

HWY 9 WEST - PO Box 288

Armstrong, IA. 50514 U.S.A

© Copyright 2012

ART'S-WAY MANUFACTURING CO., INC.

All Rights Reserved