



RODATM
MANUFACTURING, INC.
By Art's Way



Art's-Way Manufacturing Co., Inc.

Model V140
Manure Spreader

Operator's Manual & Illustrated Parts List
H610122

Issued April 2014



This symbol means ATTENTION! BECOME ALERT! YOUR SAFETY IS INVOLVED. The message that follows the symbol contains important information about your safety. Carefully read the message. Make sure you fully understand the causes of possible injury or death.

IF THIS MACHINE IS USED BY AN EMPLOYEE, IS LOANED, OR IS RENTED, MAKE SURE THAT THE OPERATOR UNDERSTANDS THE TWO INSTRUCTIONS BELOW.

BEFORE THE OPERATOR STARTS THE ENGINE:

GIVE INSTRUCTIONS TO THE OPERATOR ON SAFE AND CORRECT USE OF THE MACHINE.

MAKE SURE THE OPERATOR READS AND UNDERSTANDS THE OPERATOR'S MANUAL FOR THIS MACHINE.

⚠ WARNING

IMPROPER OPERATION OF THIS MACHINE CAN CAUSE INJURY OR DEATH.

BEFORE STARTING THE ENGINE, DO THE FOLLOWING:

1. READ THE OPERATOR'S MANUAL.
2. READ ALL SAFETY DECALS ON THE MACHINE.
3. CLEAR THE AREA OF OTHER PERSONS.
4. LEARN AND PRACTICE SAFE USE OF MACHINE CONTROLS IN A SAFE AND CLEAR AREA BEFORE YOU OPERATE THIS MACHINE ON A JOB SITE.

It is your responsibility to observe pertinent laws and regulations and to follow manufacturer's instructions on machine operation and maintenance.

See your Authorized Art's-Way Manufacturing Co., Inc. dealer or Art's-Way Manufacturing Co., Inc. for additional operator's manuals, illustrated parts catalogs, and service manuals.

TO THE OWNER

Congratulations on the purchase of your new Art's-Way Manure Spreader. You have selected a top quality machine that is designed and built with pride to ensure you have many years of efficient and reliable service.

Many people have worked on the design, production, and delivery of this Manure Spreader. The information in this manual is based on the knowledge, study, and experience through years of specializing in the manufacturing of farm machinery. This manual is designed to provide you with important information regarding safety, maintenance, and machine operation so you can and will get the best possible performance from your Manure Spreader.

Even if you are an experienced operator of this or similar equipment, we ask that you read this manual before operating this Manure Spreader. The way you operate, adjust, and maintain this unit will have much to do with its successful performance. Any further questions you may have about this product of Art's-Way equipment should be directed to your local Art's-Way dealer or to Art's-Way Manufacturing Co., Inc. Armstrong, Iowa, 50514, (712) 864-3131.

SPECIFICATIONS AND DESIGN ARE SUBJECT TO CHANGE WITHOUT NOTICE

Art's-Way Manufacturing Co., Inc. is continually making product improvements. In doing so, we reserve the right to make changes and/or add improvements to our products without obligation for the equipment previously sold.

Modifications to this Manure Spreader may affect the performance, function, and safety of its operation. Therefore, no modifications are to be made without the written permission of Art's-Way Manufacturing Co., Inc. Any modification made without the written permission of Art's-Way Mfg. Co. Inc. shall void the warranty of this product.

In the interest of continued safe operation of this Manure Spreader, pay particular attention to the safety alert symbol(s) throughout this manual.

Art's-Way Manufacturing Co., Inc. STATEMENT OF PRODUCT LIABILITY

Art's-Way Manufacturing Co., Inc. recognizes its responsibility to provide customers with a safe and efficient product. Art's-Way Manufacturing Co., attempts to design and manufacture its products in accordance with all accepted engineering practices effective at the date of design. This statement should not be interpreted to mean that our products will protect against the user's own carelessness or failure to follow common safety practices nor will Art's-Way Manufacturing Co., be liable for any such act. In addition, Art's-Way Manufacturing Co., assumes no liability for any altered product or any modified product by users or anyone other than an authorized dealer.

IMPORTANT WARRANTY INFORMATION

The warranty for this Manure Spreader appears on page 6 of this manual. In order to establish proper warranty registration, the Warranty Registration must be completed and returned to the factory. Failure to comply with this requirement may result in reduced warranty allowances.

LIMITATIONS OF THIS MANUAL

This manual contains operating instructions for your V140 Manure Spreader only. Any mention of other machinery in this manual other than the V140 Manure Spreader is for reference only. This manual does not replace nor is it to be used for any machinery that may be attached to or used in conjunction with the V140 Manure Spreader.

PARTS & SERVICE

As the purchaser of your new spreader, it is very important to consider the following factors:

A. Original Quality

B. Availability of Service Parts

C. Availability of Adequate Service Facilities

Art's-Way Manufacturing Co., Inc. has an excellent dealership network ready to answer any questions you may have about your spreader. Parts for your machine may be ordered through our dealers. When placing a parts order, please have the **model** and **serial number** ready. This will allow the dealer to fill your order as quickly as possible.

For your convenience, we have provided this space for you to record your model number, serial number, and the date of purchase, as well as your dealer's name and address.



Serial and Model Number Placard

TABLE OF CONTENTS

TO THE OWNER	1
SPECIFICATIONS AND DESIGN ARE SUBJECT TO CHANGE WITHOUT NOTICE	1
Art's-Way Manufacturing Co., Inc. STATEMENT OF PRODUCT LIABILITY	1
IMPORTANT WARRANTY INFORMATION	1
LIMITATIONS OF THIS MANUAL	1
PARTS & SERVICE	2
TABLE OF CONTENTS	3-5
LIMITED WARRANTY	6
SAFETY FIRST	7
NOTICES OF DANGER, WARNING, AND CAUTION	7
<u>Safety Instructions</u>	8
GENERAL	8
BEFORE OPERATING	9
DURING OPERATION	9
MAINTENANCE SAFETY	9
HYDRAULIC SAFETY	10
TRANSPORTATION SAFETY	10
STORAGE SAFETY	10
TIRE SAFETY	11
ASSEMBLY SAFETY	11

<u>TABLE OF CONTENTS</u>	
<u>NAME</u>	<u>PAGE</u>
~~~~~OPERATOR'S INSTRUCTIONS: MANURE SPREADER~~~~~	13
~~~~~ILLUSTRATED PARTS LIST: MANURE SPREADER~~~~~	27
HITCH ASSEMBLY	28
AXLE ASSEMBLY	30
SHIELD ASSEMBLY	32
DRIVELINE ASSEMBLY	34
FRONT PTO ASSEMBLY	36
REAR PTO ASSEMBLY	38
BEATERS ASSEMBLY	40
BEATER GEARS ASSEMBLY	42
SLOP-GATE ASSEMBLY	44
APRON CHAIN ASSEMBLY	46
APRON CHAIN ASSEMBLY (CONTINUED)	48
GEARBOX ASSEMBLY	50
APRON CHAIN HYDRAULICS ASSEMBLY	52
SLOP-GATE HYDRAULICS ASSEMBLY	54

LIMITED WARRANTY

Art's-Way Manufacturing Co., Inc. warrants the products it sells to be free from defects in material and workmanship for a period of one (1) season after the date of delivery to the first (original) purchaser, subject to the following conditions:

Art's-Way Manufacturing Co., Inc. obligation and liability under this warranty is to repair or replace (at the company's option) any parts that upon manufacture were defective in material or workmanship.

All parts and repairs under this warranty shall be supplied at Art's-Way Manufacturing Co., Inc. or an authorized Art's-Way Manufacturing Co., Inc. dealer, at the option of Art's-Way Manufacturing Co., Inc.

Art's-Way Manufacturing Co., Inc. warranty does not extend to parts and elements not manufactured by Art's-Way Manufacturing Co., Inc. and which carry the warranty of other manufacturers.

Transportation or shipping to an authorized dealer for necessary repairs is at the expense of the purchaser.

Art's-Way Manufacturing Co., Inc. makes no other warranty expressed or implied and makes no warranty of merchantability or fitness for any particular purpose beyond that expressly stated in this warranty. Art's-Way Manufacturing Co., Inc. liability is limited to the terms set forth in this warranty and does not include any liability for direct, indirect, incidental or consequential damages or expenses of delay and the company's liability is limited to repair or replacement of defective parts as set forth herein.

Any improper use and/or maintenance, including operation after discovery of defective or worn parts, operation beyond the rated capacity, substitution of parts not approved by Art's-Way Manufacturing Co., Inc., or any alternation or repair by other than an authorized Art's-Way Manufacturing Co., Inc. dealer which affects the product materially and adversely, shall void the warranty.

No dealer, employee or representative is authorized to change this warranty in any way or grant any other warranty unless such change is made in writing and signed by an officer of Art's-Way Manufacturing Co., Inc.

Some states do not allow limitations on how long an implied warranty lasts or exclusions of, or limitations on relief such as incidental or consequential damages, so the above limitations or exclusions may not apply to you. This warranty gives you the specific legal rights and you may have other rights that vary from state to state.

SAFETY FIRST

SAFETY INSTRUCTIONS

"A careful operator is the best insurance against an accident." Quote from the National Safety Council.

Most accidents can be prevented if the operator:

1. Fully understands how the machine functions.
2. Can anticipate situations which may produce problems.
3. Can make necessary corrections before problems develop.

**THIS SYMBOL MEANS ATTENTION!
BECOME ALERT!
YOUR SAFETY IS INVOLVED!**



- Universal Safety Alert Symbol

The American Society of Agricultural Engineers has adopted the Universal Safety Alert Symbol as a way to identify areas of potential danger if the equipment is not operated correctly. Please be alert whenever you see this symbol in the manuals or on your spreader.

Art's-Way Manufacturing Co., Inc. strives to make our equipment as safe as possible. The Art's-Way V140 Manure Spreader conforms to applicable safety standards at the time of manufacturing. A safety conscious equipment operator makes an effective accident-prevention program complete.

Safety features and instructions for the spreader are detailed in the Safety Guidelines section of this Operator's Manual. It is the responsibility of the owner to ensure that all operators read and understand the manual before they are allowed to operate the Spreader. (Occupational Safety and Health Administration (OSHA) regulations 1928.57).

NOTICES OF DANGER, WARNING, AND CAUTION

Signal Words: Note the use of signal words **DANGER**, **WARNING**, and **CAUTION** on the spreader and in this manual. The appropriate signal word for each has been selected using the following guidelines:

DANGER

Indicates a hazardous situation which, if not avoided, will result in death or serious injury.

WARNING

Indicates a hazardous situation which, if not avoided, could result in death or serious injury.

CAUTION

Indicates a potentially hazardous situation which, if not avoided, could result in minor or moderate injury.

NOTICE

NOTICE is used to address practices not related to physical injury.

SAFETY INSTRUCTIONS

Safety instructions (or equivalent) signs indicate specific safety-related instructions or procedures.

Note: Contains additional information important to a procedure and will be found within the regular text body of this manual.

SAFETY INSTRUCTIONS

GENERAL

Most work related accidents are caused by failure to observe basic safety rules or precautions. An accident can often be avoided by recognizing potentially hazardous situations before an accident occurs. As you operate and maintain the Spreader you must be alert to potential hazards. You should also have the necessary training, skills, and tools to perform any assembly procedure.

Improper operation and/or maintenance of this unit could cause a dangerous situation that results in injury or death.

Do not use this unit until you read and understand the information contained in this manual. Do not use this equipment for anything other than its intended purpose.



Safety precautions and warnings are provided in this manual and on the unit. If these hazard warnings are not heeded, bodily injury or death could occur to you or to other persons.

Art's-Way Manufacturing Co., Inc. cannot anticipate every possible circumstance that might involve a potential hazard. The warnings in this manual and on the product are, therefore, not all-inclusive. If a method of operation not specifically recommended by us is used, you must satisfy yourself that it is safe for you and for others. You should also ensure that the unit will not be damaged or be made unsafe by the methods that you choose.

The information, specifications, and illustrations in this manual are based on the information that was available at the time this material was written and can change at any time.

Safety Alert Symbols



death.

This is the safety alert symbol. It is used to alert you to potential personal injury hazards. Obey all safety messages that follow this symbol to avoid possible injury or death.

This manual contains DANGERS, WARNINGS, CAUTIONS, NOTICES, SAFETY INSTRUCTIONS, and NOTES which must be followed to prevent the possibility of improper service, damage to the equipment, personal injury, or death. The following key words call the readers attention to potential hazards.

Hazards are identified by the "Safety Alert Symbol" and followed by a signal word such as "DANGER", "WARNING", or "CAUTION".

**SAFETY
INSTRUCTIONS**

Remember:

"The Best Operator is a Safe Operator"

CAUTION



Read and understand the operator's manual and all the safety decals before operating the spreader. Review all safety instructions with all operators annually.

BEFORE OPERATING

SAFETY
INSTRUCTIONS

Do not wear loose fitting clothing as it may catch in moving parts.



Make sure all guards and shields are installed, including the tractor power take-off (PTO) master shield, before starting or operating the spreader.



Be sure that the correct implement driveline parts are used and that they are properly secured.

Lower the lifter wheels when the spreader is not in use.

Install safety chain when attaching the spreader to the tractor.



Clear the area of bystanders, especially children, when making repairs, adjustments, or performing maintenance on the spreader.



Do not allow riders.

Put all tractor and machine controls in “neutral” and disengage the PTO before starting. Follow the starting instructions according to the OEM tractor manual.



Operate the spreader only while seated on the tractor seat.



Make sure the unit is adequately supported with safety blocks or safety stands when changing tires or performing maintenance.

DURING OPERATION

CAUTION



Entanglement Hazard
Keep hands, feet, hair, and clothing away from moving parts. Wait for all movement to stop before approaching equipment. Before making adjustments:

1. Shut off the tractor,
2. Set parking brake,
3. Put machine in neutral, and
4. Remove key while making adjustments.



Keep all shields and guards in place and in good working condition.



Keep all bystanders, especially children, away from the spreader while in operation.



Do not allow riders while the spreader is in operation.



Do not attempt to unclog, clean, or adjust the spreader while it is running.



Stay away from overhead power lines. Electrocution can occur even without direct contact.



Keep all hydraulic lines, fittings, and couplers tight and free of leaks. (Refer to Safety Guidelines – Hydraulic Safety).



Use caution when ascending or descending on the spreader. Wet shoes or boots are slippery.

MAINTENANCE SAFETY

SAFETY
INSTRUCTIONS

Follow all operating, maintenance, and safety instructions found in this Manual.



Before servicing, adjusting, repairing, or unclogging the machine, always make sure the tractor engine is stopped, key in your pocket, the machine is lowered to the ground, all controls are placed in neutral, the parking brake is set, and all the moving parts have stopped.



Use sufficient tools, jacks, and hoists that have the capacity for the job.



Use support blocks or safety stands when changing tires or performing maintenance.



Follow good shop practices of keeping the service area clean and dry, and use adequate light for the job at hand.



Before applying pressure to the hydraulic system, make sure all lines, fittings, and couplers are tightly secured and in good condition.



Make sure all shields/guards are in place and properly secured when performing maintenance.

HYDRAULIC SAFETY

SAFETY INSTRUCTIONS

Follow all operating, maintenance, and safety instructions found in this Manual.

Make sure components in the hydraulic system are kept clean and in good working condition.



Relieve pressure from the hydraulic system before servicing or disconnecting from the tractor.



Keep all hydraulic lines, fittings, and couplers tightly secured and free of leaks.



Replace any worn, cut, abraded, flattened, or crimped hoses.



Do not make any temporary repairs to the hydraulic lines, fittings, or hoses using tape, clamps, or cement. The hydraulic system operates under extremely high pressure and temporary repairs may fail suddenly and create a hazardous/dangerous situation.



Wear proper hand and eye protection when searching for a high-pressure hydraulic leak. Use a piece of wood or cardboard as a backstop instead of hands to identify and isolate a leak. If injured by a concentrated high-pressure stream of hydraulic fluid, seek medical attention immediately. Serious infection or toxic reaction can develop if hydraulic fluid penetrates the surface of the skin.



Before applying pressure to the system, make sure all components are tight and that the hydraulic lines, hoses, and couplings are not damaged.

TRANSPORTATION SAFETY

SAFETY INSTRUCTIONS

Follow all operating and safety instructions found in this manual when transporting this equipment.

Make sure the spreader complies with all local regulations regarding transporting equipment on public roads and highways.



Make sure the Slow Moving Vehicle (SMV) emblem and all lights and reflectors required by local highway and transportation authorities are properly in place, clean, and clearly visible to traffic.



Do not allow riders on any machinery during transport.

Make sure the spreader is securely attached to the tractor and install a safety chain to the spreader.

Make sure the tractor brake pedals are latched together.

Do not exceed 20 mph (32 km/h) when transporting the spreader. Always reduce speed on rough roads and surfaces, or when going down inclines.

Use caution when turning and always use the turn signals on the tractor to indicate your turning intentions to the other traffic.

The weight of the trailed machine should NEVER exceed the weight of the towing vehicle.

Check all clearances carefully whenever the machine is towed.

Lower the elevator into the transport position before transporting the spreader on the highway.



Stay away from overhead obstructions and power lines during transport. Electrocution can occur even without direct contact.

STORAGE SAFETY

SAFETY INSTRUCTIONS

Follow all operating and safety instructions found in this manual when storing this equipment.



Store the spreader in an area away from human activity.



Do not permit children to play on or around the stored machine at any time.

Make sure that the spreader is stored in an area with a firm and level base to prevent the machine from tipping or sinking into the ground.



Block the wheels to prevent the machine from rolling.

TIRE SAFETY**SAFETY
INSTRUCTIONS**

Follow all operating and safety instructions found in this manual when working around tires.

Have only a qualified tire dealer or tire repair service perform tire repairs.

Do not attempt to install a tire on a wheel or rim unless you have the proper equipment and experience to do the job.

Do not substitute tires with a lesser road rating and/or capacity for the original equipment tires.

⚠ WARNING

Explosive Force Hazard
Tire replacement, repair, and/or maintenance should be done by a qualified tire dealer or qualified repair service.

Failure to follow proper procedures when installing a tire on a wheel or rim can produce an explosive force that will result in serious injury or death.

Do not attempt to install a tire without proper equipment and experience to perform the job.

ASSEMBLY SAFETY**SAFETY
INSTRUCTIONS**

Follow all assembly, operating, and safety instructions found in this manual when assembly this equipment.



Use adequate manpower to perform assembly procedures safely.

Assemble the spreader in an area with sufficient space to maneuver the largest components and allow easy access to all sides of the machine.



Use only forklifts, lift cranes, jacks, and tools with sufficient capacity for the loads.



Do not allow spectators, especially children, in the working area.

**THIS PAGE
LEFT
INTENTIONALLY
BLANK**

OPERATOR'S INSTRUCTIONS: MANURE SPREADER



SAFETY

UNDERSTAND SAFETY WORDS AND SYMBOLS



THIS SAFETY ALERT SYMBOL is used in this manual whenever personal safety is involved and means **ATTENTION! BECOME ALERT!** It stresses an attitude of **“HEADS UP”** for safety. Read and understand all pages in this manual that bear this safety symbol and...**TAKE TIME TO BE CAREFUL!**

The Signal Word or Message areas of all safety decals are color coded to indicate the level of hazard.

CAUTION: Is used to direct attention to unsafe practices, and uses the color yellow.

WARNING: Denotes a specific potential hazard, and uses the color yellow or orange.

DANGER: Denotes a most serious specific potential hazard, and uses the color red.

READ THE OPERATORS MANUAL

Any person who will be operating or maintaining this manure spreader should first read and understand this manual and all safety warnings on the unit.

This instruction manual should always be available to those responsible for the operation and maintenance of this manure spreader. It is the owner's responsibility to provide this safety information to his operators and employees.

Any person who does not understand the safety and operation instructions contained in this manual should not be considered qualified to operate this manure spreader.

FOLLOW SAFETY INSTRUCTIONS

Specialized procedures and instructions are required and must be adhered to when working on this equipment. Failure to follow the instructions contained in this manual could result in severe personal injury, death, and/or product or property damage. Personnel when operating or maintaining this equipment must use all applicable safety procedures such as OSHA requirements, regional and local safety codes and requirements, safe working practices, and good judgment.

**SAFETY****OPERATING SAFETY PRECAUTIONS**

WHEN THE SPREADER IS IN OPERATION, IT HAS MANY MOVING PARTS, WHICH COULD CAUSE SEVERE INJURY OR DEATH TO PERSONS COMING IN CONTACT WITH THESE PARTS. TO HELP AVOID SERIOUS ACCIDENTS, THE FOLLOWING GUIDELINES MUST BE FOLLOWED.

- **BE SURE ALL SAFETY SHIELDS** are in place before operating, including any truck and driveline shields. Exposed machinery, due to missing shielding, can cause severe injury or death. Repair or replace any damaged or missing shielding.
- **NEVER PUT ARMS OR FEET INSIDE UNIT**, or near discharge areas, nor climb on or in the spreader while it is running. NEVER allow anyone to position themselves over or near the top, or near the discharge area of the spreader while it is running. Rotating beaters, shafting, belts, pulleys, and sprockets can grab clothing or create pinch points, which can cause severe injury or death to the operator or bystanders. Always stop engine and remove ignition key so that the spreader cannot be accidentally turned on while inspection, servicing, repairing, or cleaning the spreader.
- **NEVER ATTEMPT TO RELEASE JAMMED MATERIALS OR CLEAN MATERIALS** from any area of the spreader or discharge without turning the spreader off first. Materials can hide moving parts and stopped parts can start unexpectedly, causing severe injury. Always stop engine and remove ignition key before attempting to remove jammed material or clean the spreader.
- **DO NOT ALLOW OPERATION OF THIS UNIT BY AN INEXPERIENCED OR UNQUALIFIED PERSON.** Keep all unqualified people away from spreader during operation. Operators of this unit must be alert and use good judgment at all times and must have fully read and understand this manual.
- **DO NOT WEAR LOOSE OR FLOPPY CLOTHING** while operating this unit. Loose clothing may become entangled in moving machinery.
- **BE SURE THE INSIDE OF SPREADER IS CLEAR** of any obstructions before loading.
- **SHOULD A PROBLEM OCCUR DURING THE OPERATION OF SPREADER, always turn off engine and remove ignition key before investigating problem.** If power source has not been turned off, the spreader may start unexpectedly, causing severe injury or death.



SAFETY

TRANSPORTING SAFETY PRECAUTIONS



WHEN TRANSPORTING A LOADED SPREADER, USE REDUCED SPEED AND BE SURE THE VEHICLE HAS ADEQUATE BRAKES TO STOP.

- **DO NOT ALLOW ANYONE TO RIDE ON OR INSIDE THE SPREADER.**
- **REDUCE SPEED WHEN TRAVELING** loaded and/or over rough, soft, or wet terrain. Exercise caution on side slopes and when turning corners.
- **AVOID OPERATING THE SPREADER CROSSING GULLIES OR DITCHES.**
- **WHEN WORKING ON SLOPES** or inclines, travel uphill or downhill. Keep the transmission in gear when going downhill.
- **AVOID DRIVING ON** loose fill, rocks, inclines, ditches, and holes.
- **ALWAYS PARK** the spreader on level ground and block the tires.
- **IF UNIT IS FOR HIGHWAY TRANSIT** the end user is responsible for federal, state and local vehicle safety regulation compliance (example: under ride requirements, lighting and weight limitations).

SAFETY DECALS

SAFETY DECALS ARE PLACED ON THIS UNIT FOR THE PROTECTION OF THE OPERATOR OR ANY PERSON NEAR THE UNIT.

- **BE SURE EVERYONE WHO OPERATES THE SPREADER UNDERSTANDS ALL THE INFORMATION, WARNING, CAUTION AND DANGER DECALS.**
- **KEEP THE DECALS CLEAN** so they are readable. This applies to all caution, warning, and danger decals.
- It is the **OWNER'S RESPONSIBILITY** to provide information for safe operation of this machine.
- **REPLACE ANY DAMAGED OR WORN DECAL.** Once any part of a decal becomes non-readable, it should be replaced. Replacement decals may be ordered through your dealer or Art's-Way Manufacturing.
- **WHEN REPLACING DECALS,** be sure the surface area is clean and dry, peel the backing off the decal, and apply to the unit. Be sure to wipe with a clean cloth to rub out all air bubbles to assure a good seal. For best adhesion decals should be applied in temperatures of 50°(f) or warmer.



SAFETY DECALS

1.) 355500



2.) MP16.20178



3.) 368040



4.) 384020



5.) 346310



6.) HJ522-00-0112



7.) HJ22-00-0113



8.) HJ22-00-0114



9.) HJ22-00-0135



10.) 268860



11.) HJ22-00-0087



12.) 467450



13.) 582430



14.) 476460



15.) 476450



16.) 476470



17.) HJ22-00-0133



18.) 476430



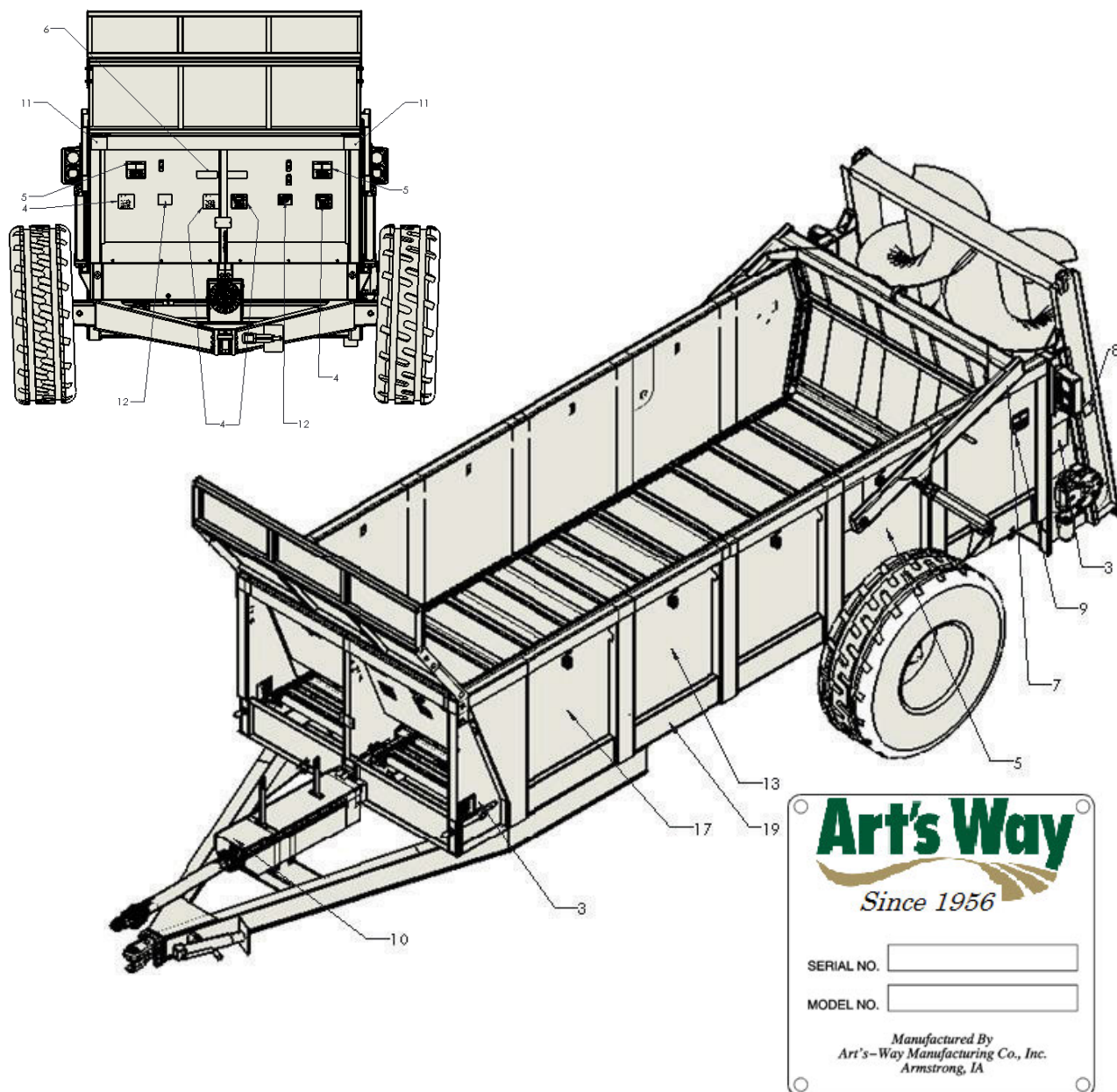
19.) HJ22-00-0145





SAFETY

SAFETY DECAL LOCATION



DECALS ARE THE SAME FOR OPPOSITE SIDE.

MODEL AND SERIAL NUMBER INFORMATION is located in the upper center area of the front panel. This is the number to give service personnel for parts and service questions.



MANURE SPREADER SAFETY



THERE ARE INHERENT HAZARDS ASSOCIATED WITH THE OPERATION OF A MANURE SPREADER. FOR YOUR SAFETY:

- **ONLY PROPERLY INSTRUCTED PEOPLE SHOULD OPERATE THE SPREADER.** Do not allow children or inexperienced persons to operate spreader.
- **KEEP ALL GUARDS AND SHIELDS IN PLACE.** Moving parts can crush and dismember.
- **CLEAR THE AREA** before equipment start up.
- **KEEP HANDS, FEET, AND LOOSE CLOTHING AWAY FROM ANY MOVING PARTS.**
- **DO NOT GO NEAR THE SPREADER WHILE THE MACHINE IS OPERATING.**
- **MAKE SURE THE PTO IS SECURELY LOCKED** to both the tractor and spreader before operating this unit.
- **DO NOT OPERATE PTO AT SPEEDS HIGHER** than manufacturer's recommendations.
- **HIGHWAY TRAFFIC IS NOT TO EXCEED 10 MPH.** The tires supplied are for farm use only and are not designed for use above this speed.
- **USE ADEQUATE SAFETY CHAINS** when towing the spreader.
- **USE OF A SLOW MOVING VEHICLE SIGN IS REQUIRED** on all public roads. Obey all applicable highway safety laws and rules.
- **ALWAYS USE A TRACTOR LARGE ENOUGH TO PROVIDE SUFFICIENT BRAKING** assistance when towing a loaded spreader.
- **USE CAUTION WHEN TRAVELING** over uneven terrain and when approaching stops.
- **DO NOT LOAD THE SPREADER** unless it is hitched to the tractor.
- **DO NOT UNHITCH A LOADED SPREADER** from the tractor. Leaving it supported by only the jack.
- **PARK THE SPREADER ON LEVEL GROUND** and place blocks ahead of and behind the wheels before unhooking from tractor to avoid unexpected rolling when separated from vehicle.
- **DO NOT ALLOW RIDERS ON THE SPREADER.**



**FAILURE TO HEED MAY RESULT IN SERIOUS PERSONAL INJURY OR DEATH
THERE ARE ADDITIONAL HAZARDS ASSOCIATED WITH THE SERVICE AND MAINTENENCE
OF YOUR SPREADER.**

FOR YOUR SAFETY:

- **INSPECT** when first delivered and regularly thereafter; that all connections and bolts are tight and secure before operating.
- **RETIGHTEN ALL WHEEL BOLTS** after the first hour of towing. Check periodically thereafter.
- **MAINTAIN PROPER TIRE AIR PRESSURE** at all times.
- **ALWAYS WEAR EYE PROTECTION** when operating or servicing spreader.
- **BE SURE ALL MOVEMENT HAS STOPPED** and that the PTO is disconnected and the tractor is shut off before servicing the spreader or components.
- **ESCAPING HYDRAULIC FLUID UNDER PRESSURE** can penetrate skin and cause serious injury. Relieve all pressure from the hydraulic system before connecting or disconnecting the lines or making repairs. Check all hoses and fittings before start-up and periodically during operation.
- **NEVER MAKE ANY ALTERATIONS** or modifications to this equipment.



FAILURE TO HEED MAY RESULT IN SERIOUS PERSONAL INJURY OR DEATH

PRE-OPERATION

IMPORTANT: READ BEFORE OPERATING SPREADER.

IT IS THE RESPONSIBILITY OF THE OWNER TO MAKE SURE THE SPREADER IS SET UP PROPERLY. THE FOLLOWING RECOMMENDATIONS SHOULD BE HELPFUL.

- **CHECK FOR PROPER ASSEMBLY**, adjustment and lubrication. Check to be sure all bolts and setscrews are tight. Check to be sure that all belts and belt tighteners are properly adjusted. Review Operating Safety Precautions and Lubrication instructions for more information.
- **BE SURE ALL SHIELDS** are properly in place, including any drive-line shields
- **CHECK FOR AND REMOVE ANY FOREIGN OBJECTS** in the spreader box and discharge area.
- **BE SURE NO ONE IS NEAR THE SPREADER.**
- **TEST RUN THE SPREADER.**
- **WITH THE SPREADER EMPTY**, start the apron and beaters.
- **RUN FOR AT LEAST 5 MINUTES.**
- **CHECK THE SPREADER DRIVE COMPONENTS TO BE SURE THEY ARE NOT ABNORMALLY HOT.**

If any of these items are not running as indicated, immediately repair or contact your service representative. Always refer to Operating Safety Precautions before operating or servicing the spreader.



LUBRICATION

ALWAYS STOP THE MANURE SPREADER AND DISCONNECT POWER BEFORE SERVICING, REPAIRING, OR CLEANING. USE SAFE SHOP PROCEDURE AND EXERCISE CAUTION WHEN WORKING ON THIS MACHINE!

It is extremely important to properly lubricate your new ART'S-WAY machine before it is used for the first time. If the mechanical drive components of your unit are not protected from shock and frictional abrasion, the wear rate of these components will be vastly accelerated and their life span will be drastically reduced. For proper care and maintenance, your machine should be serviced with engine oil, multipurpose grease, and fluids specified below.

It is extremely important that the lubrication guide be followed. For lubricating bearings, use good quality multipurpose grease. Pump the grease in slowly. Roller chains should be lubricated with engine oil, or a spray-on chain lubricant and then the spreader operated under a no-load condition. This will allow the roller chains to be thoroughly lubricated and thus minimize heat-up during operation.

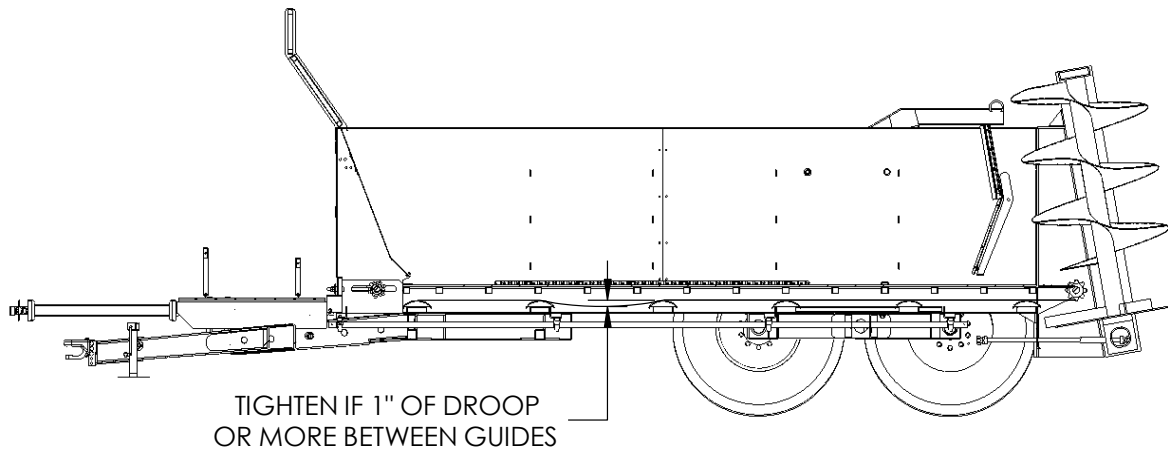
DESCRIPTION	INTERVAL	LUBRICANT
APRON BEARINGS	15-20 HOURS	GREASE
APRON GEAR CASE	ANNUALLY	EP90 GEAR LUBE
APRON CHAIN	WHEN PARKED	30WT OIL
BEATER GEAR CASE	ANNUALLY	EP90 GEAR LUBE
UNIVERSAL JOINTS	15-20 HOURS	GREASE
AXLE HUBS	BI-ANNUALLY	GREASE
PTO SHAFTS	15-20	GREASE
SLIP CLUTCH	BI-ANNUALLY	GREASE
CAST FLANGE BEARINGS	15-20 HOURS	GREASE
PILLOW BLOCK BEARINGS	15-20 HOURS	GREASE
SLOP GATE PIVOT POINT	15-20 HOURS	GREASE

ALWAYS REPLACE ALL SHIELDS AFTER MAINTENANCE AND LUBRICATION IS COMPLETE

INSPECTION & ADJUSTMENTS

ALWAYS STOP SPREADER, SHUT OFF VEHICLE ENGINE AND REMOVE IGNITION KEY BEFOR SERVICING, REPAIRING, OR CLEANING, USE SAFE SHOP PROCEDURES AND EXERCISE CAUTION WHEN WORKING ON THIS SPREADER!

- **SHIELDING** to be sure all shielding is in place and functioning properly. Replace all damaged or missing shielding immediately-Contact your nearest dealer or the Art's-Way parts/service dept. for more information. Check bolts and Set Screws after a few hours of use and each month thereafter, and tighten if necessary.
- **AFTER A FEW HOURS OF INITIAL OPERATION**, check all bolts and set screws to be sure they are tight and secure.
- **CHECK BEATER TEETH.** Bolts must stay tight to prevent teeth from being flung from beaters. Look for wear on teeth and replace any that are worn out or damaged.
- **SAFETY DECALS FOR READABILITY.** If any safety decals are removed, obstructed, or otherwise not understandable, they should be replaced immediately. Keep all decals clean!
- **IMPORTANT: IF YOU WELD ON THIS UNIT:** Do Not allow the currents to flow through the bearings, Ground directly to the item being welded.
- **PERIODICALLY CHECK** all set screws and bolts and retighten if necessary.
- **APRON CHAINS** for wear, proper alignment and tension, according to the adjustment guidelines as shown.
- **BE SURE TO KEEP PROPER TENSION ON APRON CHAINS.** The (4) apron tightener bolts are located at the front of the unit at each end of the apron shaft. They should be adjusted evenly for their respective assembly as shown on next page:



If apron is loose, remove one link from each side of that apron chain assembly and readjust to tension as shown. **CAUTION:** Over tightening can cause premature failure of the drive components.

SPREADER OPERATION

ALWAYS REFER TO THE OPERATING SAFETY PRECAUTIONS AND SAFETY DECAL SECTIONS OF THIS MANUAL BEFORE OPERATING THIS SPREADER

LOADING

- **BEFORE LOADING THE SPREADER**, be sure there are no obstructions in the beaters or discharge opening. Inspect the spreader to see that it is in good mechanical condition and that all shields are in place and functional.
- **NEVER CHECK THE SPREADER WHILE IT IS OPERATING**
- **IN FREEZING WEATHER**, make sure the apron is not frozen with manure. If this appears likely, turn off vehicle engine, remove ignition keys, loosen the frozen area and operate before loading.
- **AVOID LOADING ROCKS AND OTHER SOLID OBJECTS INTO THE SPREADER**
- **NEVER COVER BEATERS** when loading, beaters should spin freely before engaging.

OPERATION

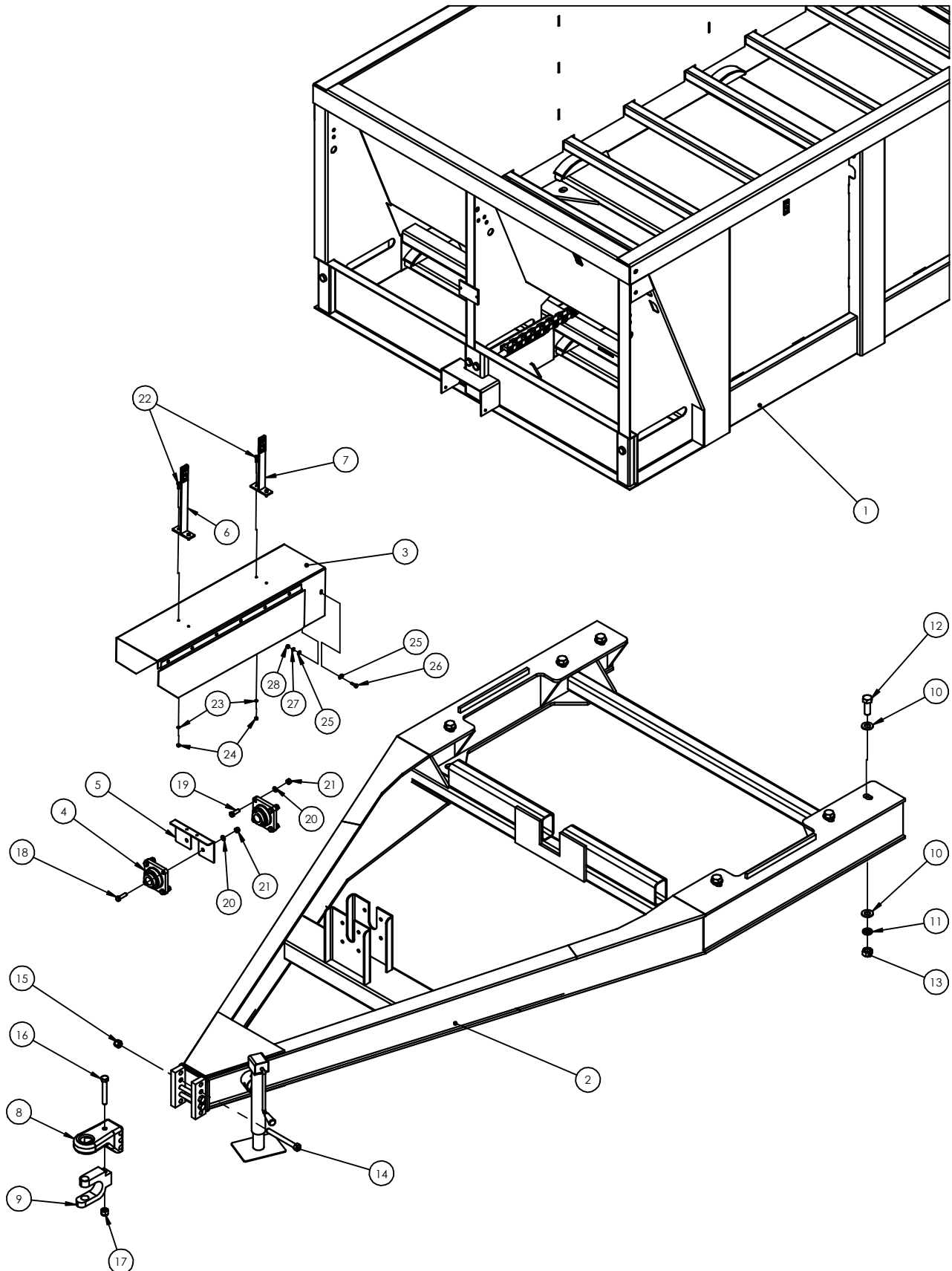
- **BEFORE OPERATING, BE SURE NO ONE IS NEAR THE SPREADER AND THAT THE DISCHARGE AREA IS CLEAR OF ALL OBJECTS OR PERSONS THAT COULD BE HARMED IF MATERIAL WAS DISCHARGED!**
- **WITH THE VEHICLE STOPPED** and the engine throttled down, engage the apron and beater levers.
- **START VEHICLE IN MOTION.**
- **THE SPREAD RATE IS CONTROLLED BY THE VEHICLE GROUND SPEED.** The type of material being spread affects the rate at which material is discharged from the spreader. Semi-liquid materials will discharge faster than the more solid type materials.
- **WHEN THE SPREADER IS EMPTY DURING FREEZING TEMPERATURES**, be sure that the spreader is cleaned out to prevent the apron from freezing down.
- **IF THE BEATER QUILTS TURNING**, stop the vehicle, turn off the motor, remove the ignition key, and check driveline of the spreader, starting in the front with the PTO and working towards the rear of the spreader.
- **NEVER LOAD THE SPREADER SO THE LOAD IS ON THE BEATERS.**

*If a problem should occur while unloading the spreader, or if you want to clean off the spreader after it is empty, NEVER leave the VEHICLE without first turning off the engine and removing ignition key.

**THIS PAGE
LEFT
INTENTIONALLY
BLANK**

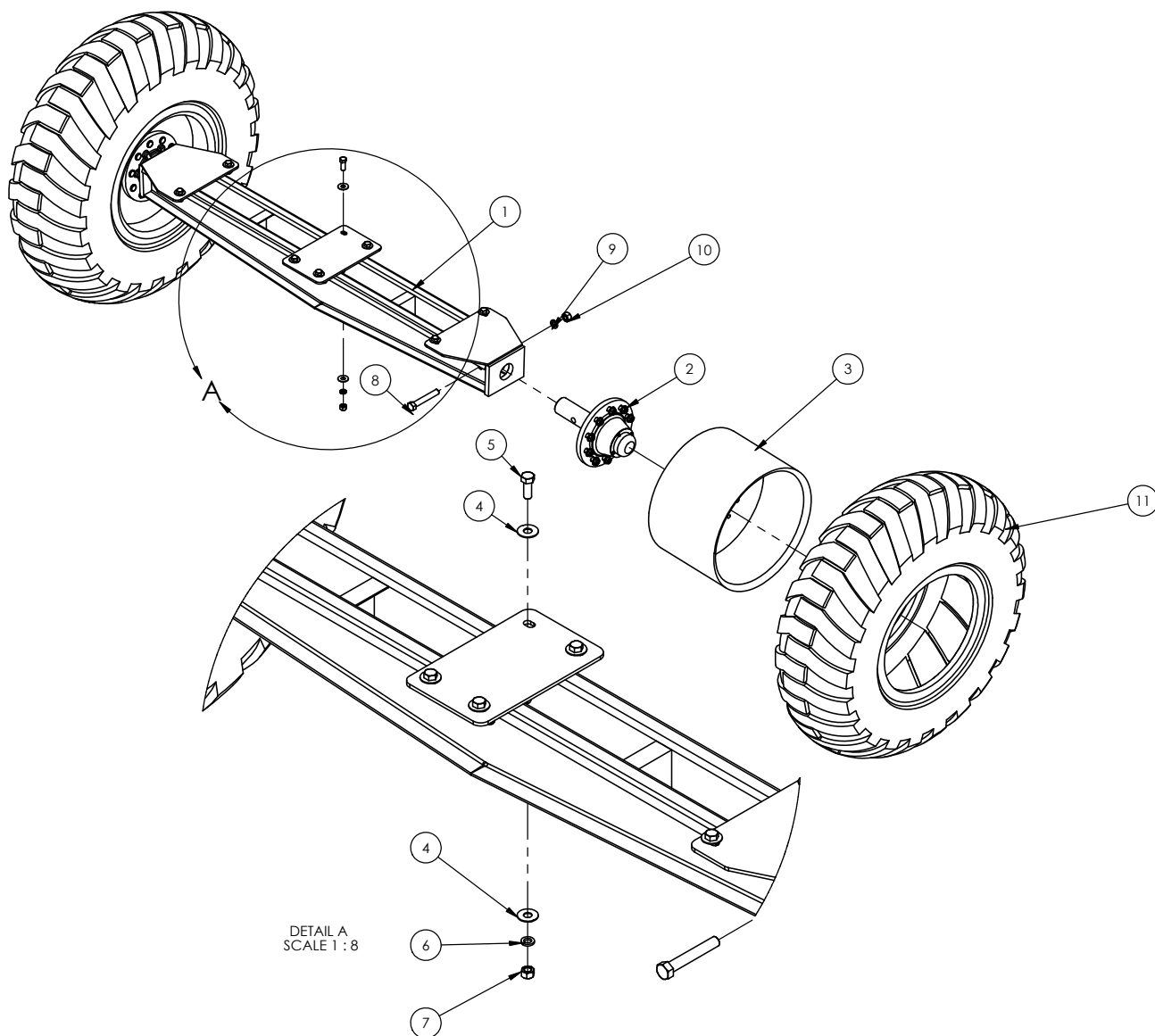
ILLUSTRATED PARTS LIST: MANURE SPREADER

HITCH ASSEMBLY



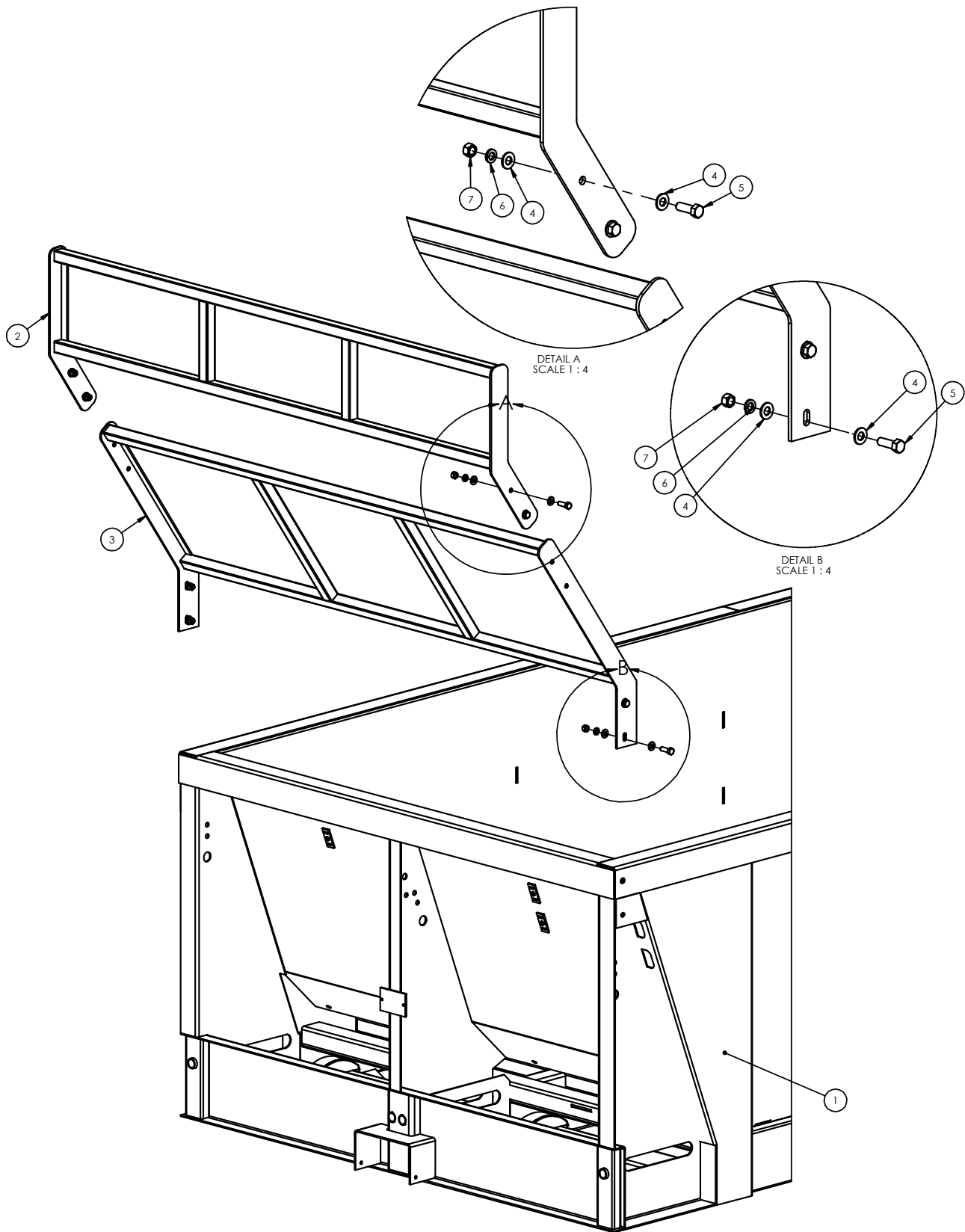
<u>ITEM NO.</u>	<u>PART NUMBER</u>	<u>DESCRIPTION</u>	<u>QTY.</u>
1	H140001	V140 BOX	1
2	H140011	TONGUE ASSY	1
3	H140025	PTO SHIELD ASSY	1
4	HK08-03-1035	BEARING, FLANGE 4 BOLT, 1-1/2" W/LOCKING COLLAR	2
5	H160025-04	SUPPORT, PTO SHIELD	1
6	H160022	LONG HOSE HOLDER	1
7	H160023	SHORT HOSE HOLDER	1
8	HH76-02-8201	CAT 3 PINTLE HITCH	1
9	HH76-02-8199	CLEVIS FOR HITCH	1
10	042180	WASHER, FLAT 1 X 2 X 3/16	12
11	003350	WASHER, LOCK 1 X 1 21/32 X 1/4	6
12	005930	1" HEX HEAD BOLT, 2.5" GRD 8	6
13	J14H805	NUT, HEX 1.00-8 GR5 ZN	6
14	991050	HBOLT 0.7500-10X8.5X8.5-N	3
15	1100238	NYLON INSERT LOCKNUT, 3/4-10 UNC	3
16	P99440	HBOLT 0.7500-10X5.5 GR5 ZN	1
17	991040	NYLON INSERT LOCKNUT, 3/4-10 UNC	1
18	1770500	BOLT, 1/2-13 X 1-3/4 GR5 ZN	2
19	014770	BOLT, HHCS .50-13X1.50	6
20	005370	WASHER, LOCK 1/2 ZN	8
21	005360	NUT, HEX, 1/2" Z5	8
22	042960	HBOLT 0.2500-20X1X1-N	4
23	029440	WASHER, LOCK 1/4 SAE	4
24	027660	NUT, HEX 1/4-20 GR5 ZN	4
25	022920	WASHER, FLAT 5/16 STD	4
26	005900	BOLT, HHCS 5/16-18 X1.00 GR5 ZN	2
27	023620	WASHER, LOCK 5/16 ZN 5	2
28	023630	NUT, HEX 5/16-18 GR5 ZN	2
29	I124589	NUT, HEX 5/8-11 GR5 ZN	1
30	HO74-01-5069	GEARBOX, BERMA, RIGHT ANGLE	1
31	HC47-00-3122	MOTOR, HYD EATON 2000 SE	1

AXLE ASSEMBLY



<u>ITEM NO.</u>	<u>PART NUMBER</u>	<u>DESCRIPTION</u>	<u>QTY.</u>
1	H140007	AXLE	1
2	H160052	V SERIES HUB/SPINDLE	2
3	HN69-07-4074	HD SPLIT RIM, 10-BOLT	1
4	990710	WASHER, FLAT 3/4 STD	16
5	147310	HBOLT 0.7500-10X2.5X2.5-N	8
6	036800	WASHER, LOCK 3/4 SAE ZN	8
7	J14H794	NUT, HEX 3/4-10 GR5 ZN	8
8	J08H4722	HBOLT 1.0000-8X6.5X6.5-N	2
9	003350	WASHER, LOCK 1 X 1 21/32 X 1/4	2
10	J14H805	NUT, HEX 1.00-8 GR5 ZN	2
11	HN69-07-4073	WHEEL, TIRE 20.5 X 25	1
12	I124589	NUT, HEX 5/8-11 GR5 ZN	1
13	HO74-01-5069	GEARBOX, BERMA, RIGHT ANGLE	1
14	HC47-00-3122	MOTOR, HYD EATON 2000 SE	1
15	H610074	STRAP, FRONT RUBBER	1
16	146670	DECAL, GREASE SYMBOL	3

SHIELD ASSEMBLY



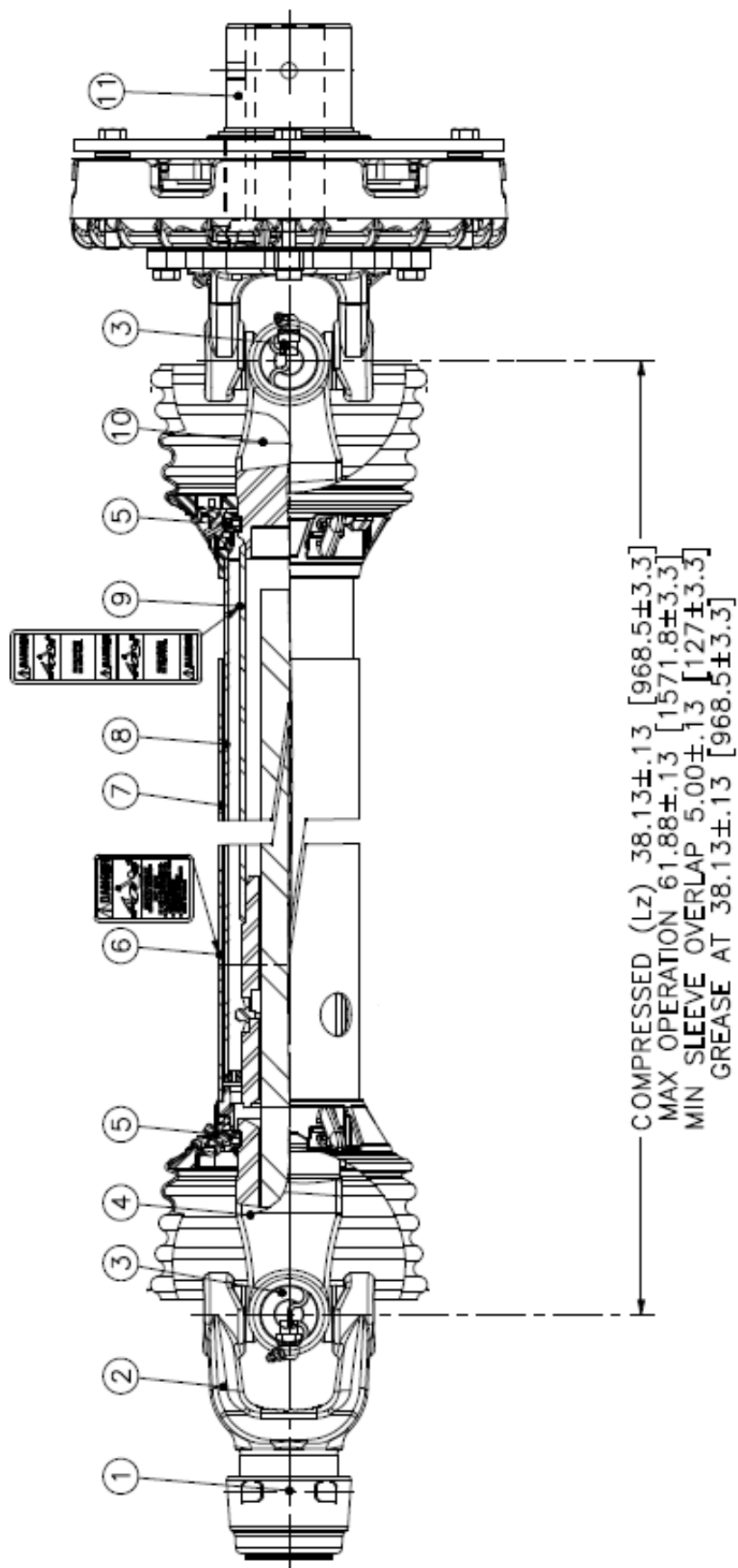
<u>ITEM NO.</u>	<u>PART NUMBER</u>	<u>DESCRIPTION</u>	<u>QTY.</u>
1	H140001	V140 BOX	1
2	H140029	CAB PROTECTOR EXT	1
3	H140020	SPLASH GUARD	1
4	005200	WASHER, FLAT 1/2 STD	14
5	014770	BOLT, HHCS .50-13X1.50	8
6	005370	WASHER, LOCK 1/2 ZN	8
7	005360	NUT, HEX, 1/2" Z5	8

ITEM NO.	PART NUMBER	DESCRIPTION	QTY.
1	014770	BOLT, HHCS .50-13X1.50	6
2	005370	WASHER, LOCK 1/2 ZN	16
3	005360	NUT, HEX, 1/2" Z5	24
4	H140503	V140, VERTICAL	1
5	HH75-01-8244 [PG. 40]	VERTICAL BEATER	1
6	H200101	BEATER LOCATOR PIN	1
7	014770	BOLT, HHCS .50-13X1.50	2
8	005200	WASHER, FLAT 1/2 STD	2
9	127890	HLNUT 0.5000-13-D-N	2
10	HK08-03-1035	BEARING, FLANGE 4 BOLT, 1-1/2" W/LOCKING COLLAR	2
11	HK08-55-1027	BEARING, 1.50", PILLOW BLOCK	4
12	H140012	DRIVE SHAFT	1
13	H160073	SLIP SLEEVE SHAFT ASSY	1
14	H160028	PTO DRIVE SHAFT	1
15	H160045 [PG. 36]	TWS ASSEMBLY	1
16	H140049 [PG. 38]	REAR PTO ASM V140	1
17	H140042	PUMP ADAPTER, 540 RPM	1
18	005200	WASHER, FLAT 1/2 STD	32
19	023950	BOLT, HHCS 1/2-13 X 2 GR5 ZN	8
20	021360	PIN, CLEVIS 5/16 X 3 ZN	3
21	023090	PIN, COTTER 3/32 X .75	4
22	010360	PIN, CLEVIS 5/16 X 2-3/4 ZN	1
23	021530	KEY, SQUARE 3/8 X 2	4
24	1770500	BOLT, 1/2-13 X 1-3/4 GR5 ZN	2
25	010730	HBOLT 1/2-13 X 1.25" GR5 ZN	8

FRONT PTO ASSEMBLY

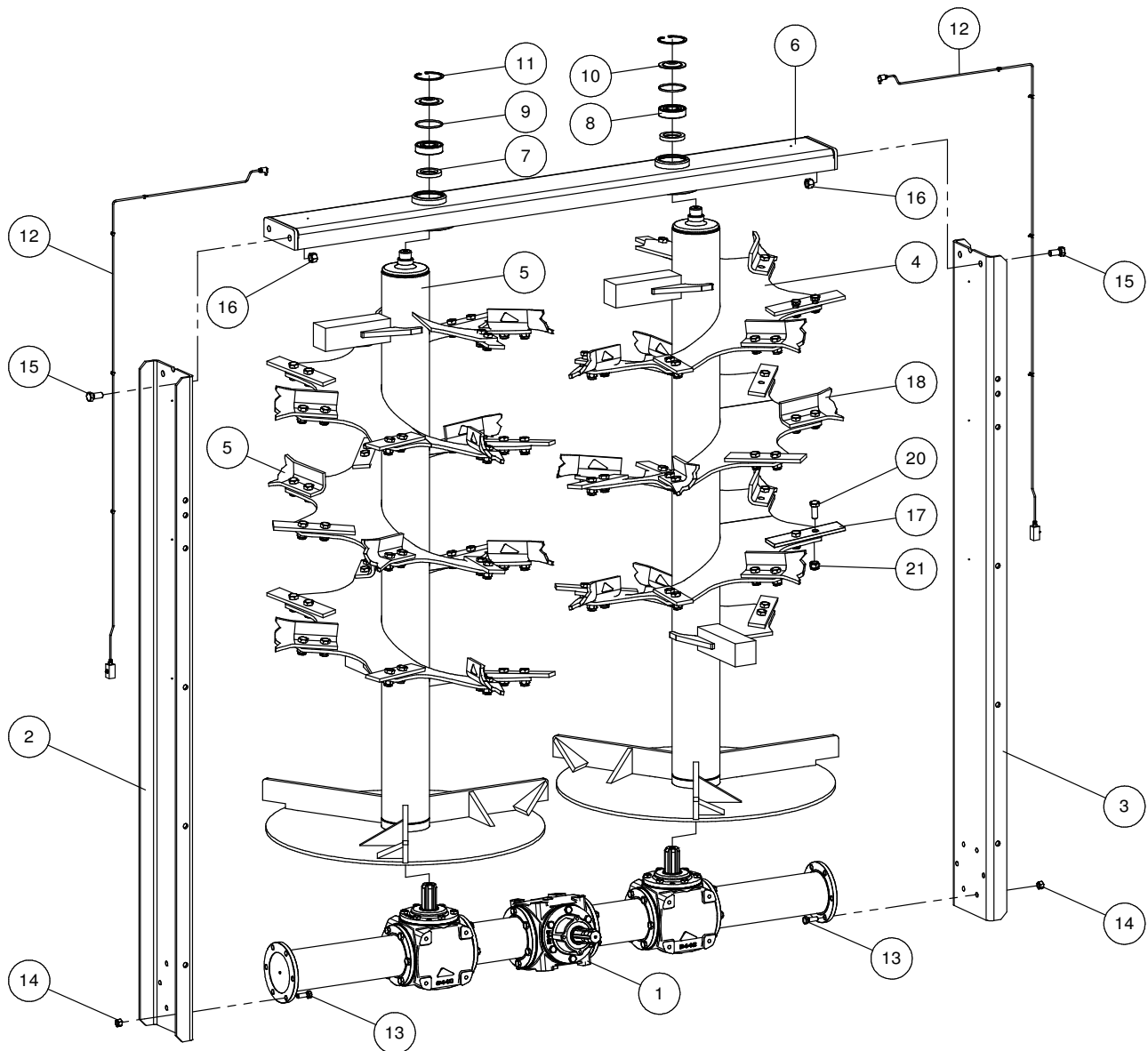
WARNING!

PORTIONS MARKED **Δ** OF THIS DRIVELINE
ARE NOT GUARDED.



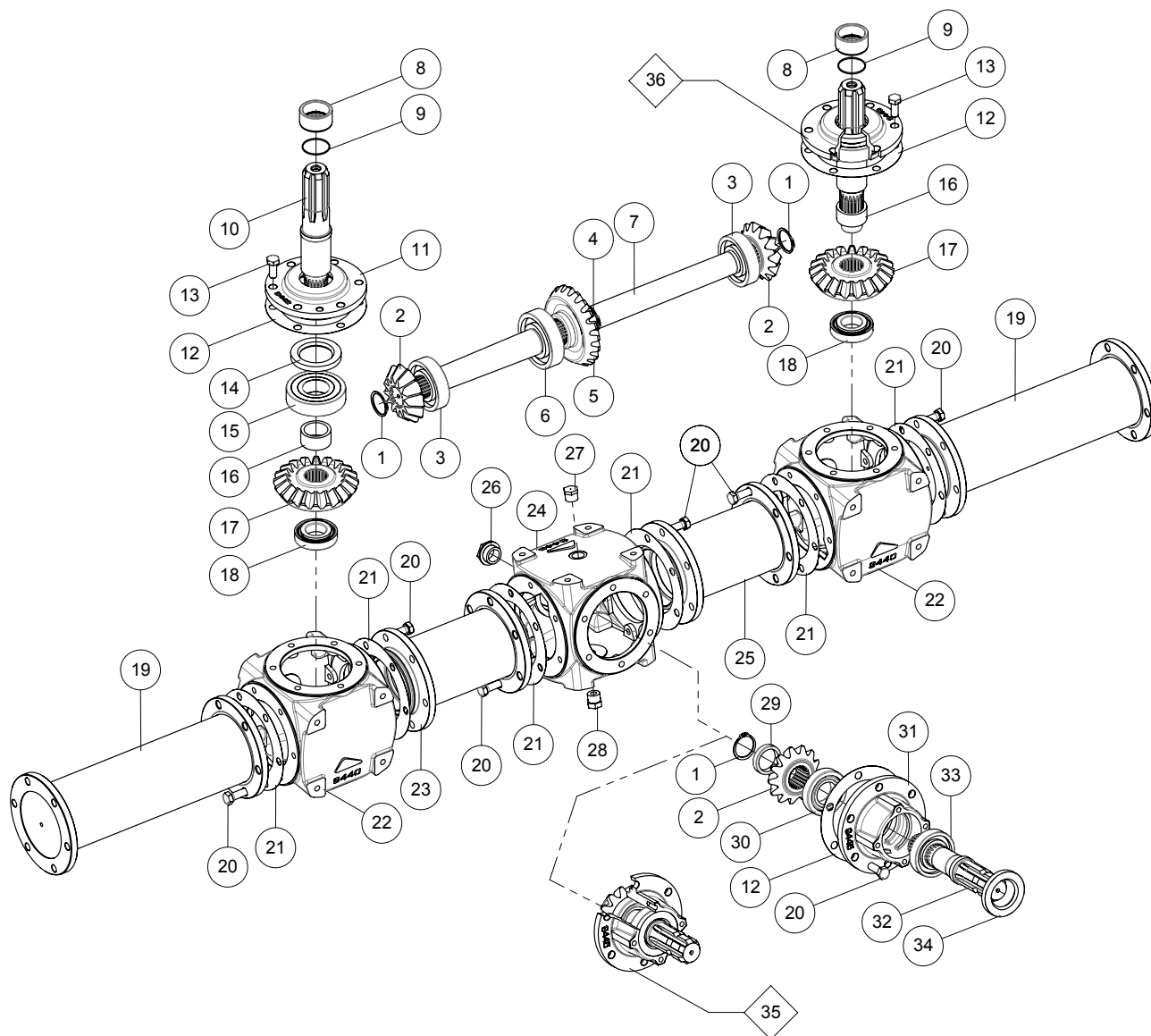
<u>ITEM NO.</u>	<u>PART NUMBER</u>	<u>DESCRIPTION</u>	<u>QTY.</u>
A	H93-25396	JOINT & SHAFT HALF W/GAURD	1
B	H95-25396	JOINT & SHAFT HALF	1
C	H92-25396	JOINT & SHAFT HALF W/GAURD	1
D	H94-25396	JOINT & SHAFT HALF	1
1	MP331682B91	REPAIR KIT-PAWL LOCK	1
2	E830068	YOKE, TRACTOR	1
3	HO66-03-5027	PTO,CROSS & BEARING KIT	2
4	H99-25396	YOKE & SHAFT	1
5	H19-11143	GUARD REPAIR KIT	2
6	268860	DECAL, DANGER ROTATING D	1
7	H97-25396	OUTTER GUARD	1
8	H96-25396	INNER GUARD	1
9	0340180	DANGER SHIELD MISS.	1
10	H98-25396	YOKE,TUBE & SLIP SLEEVE	1
11	H38-15088	FRICTION CLUTCH ASM.	1

<u>ITEM NO.</u>	<u>PART NUMBER</u>	<u>DESCRIPTION</u>	<u>QTY.</u>
A	H93-25686	JOINT & SHAFT HALF ASM. W/ GUARD	1
B	H95-25686	JOINT & SHAFT HALF ASM.	1
C	H92-25686	JOINT & TUBE HALF ASM. W/ GUARD	1
D	H94-25686	JOINT & TUBE HALF ASM.	1
1	H26-15120	SSL/AUTO-LOK REPAIR KIT	1
2	H11-14680	BOLT, 3/8-16 X 2.00 LG. GR. 8	1
3	H11-10035	LOCKNUT, 3/8-16	1
4	H40-10139	BALL, SHEAR ASM.	1
5	H03-10045	35R CROSS KIT	2
6	H99-25686	YOKE & SHAFT (1.19 SQ.)	1
7	H97-25686	OUTER GUARD	1
8	H19-11146	GUARD REPAIR KIT	1
9	H13-10021	SAFETY SIGN	1
10	H13-10022	SAFETY SIGN	1
11	H19-11147	GUARD REPAIR KIT	1
12	H96-25686	INNER GUARD	1
13	H98-25686	YOKE, TUBE & SLIP SLEEVE	1
14	H35610-1005	SAFETY SLIDE LOCK ASM.	1
15	H26-13387	SSL/AUTO-LOK REPAIR KIT	1

BEATERS ASSEMBLY

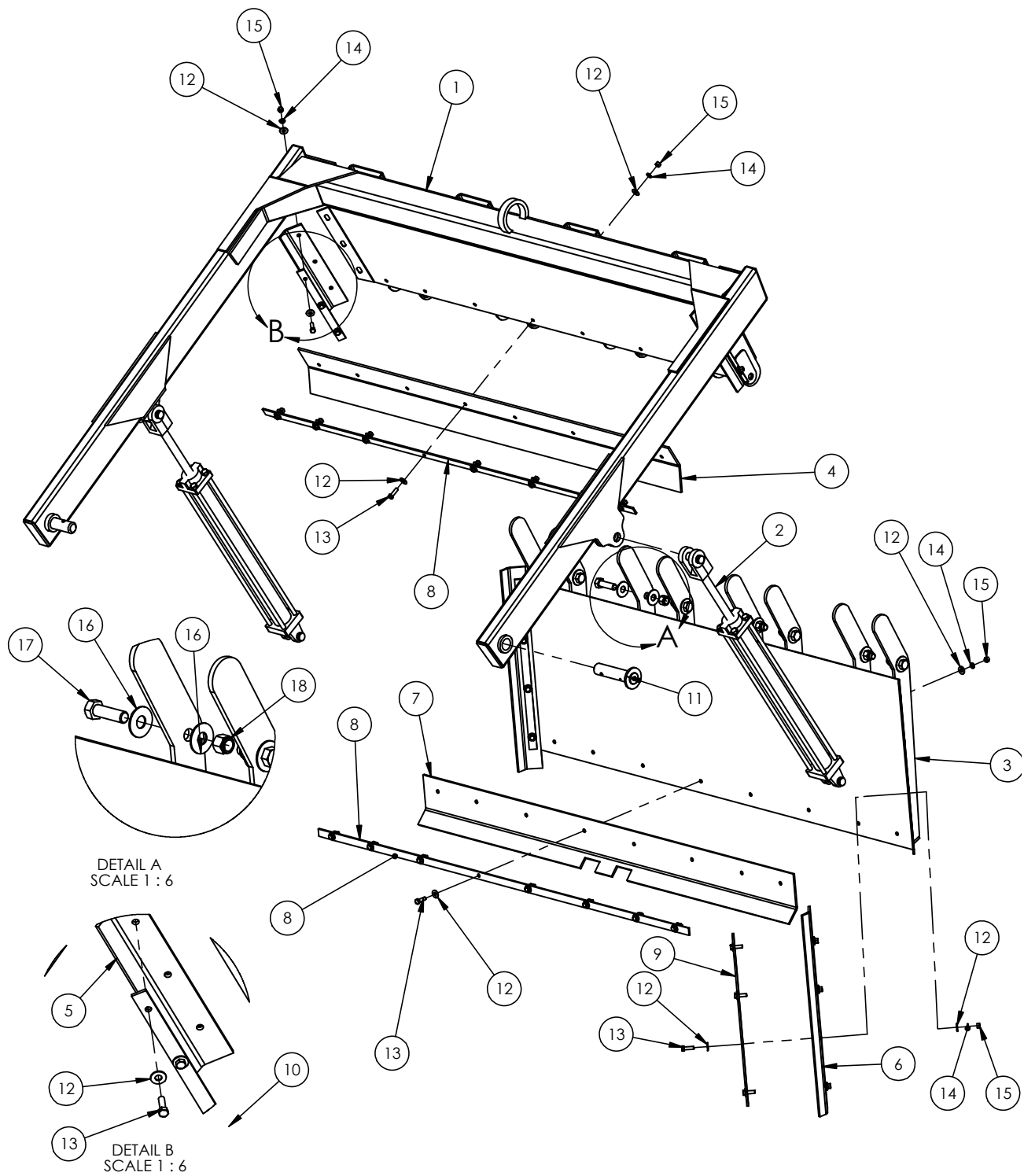
<u>ITEM NO.</u>	<u>PART NUMBER</u>	<u>DESCRIPTION</u>	<u>QTY.</u>
1	H14936 [PG. 42]	GEAR BOX SRT8/1830/820-RO	1
2	H14944	RIGHT PANEL	1
3	H14945	LEFT PANEL	1
4	H14946	RIGHT BEATER	1
5	H14947	LEFT BEATER	1
6	H14950	CROSS BAR	1
7	H7331	OIL SEAL 45/72/10	2
8	H3340	BEARING 1307 E	2
9	H3462	O-RING 176	2
10	H7724	COVERPLATE	2
11	H3435	CIRCLIP I 80	2
12	H14952	LUBRIFICATION KIT	1
13	H3768	SCREW, HEX-HD M12X35	12
14	H4478	NUT M12-8G	12
15	H8940	SCREW, HEX-HD M16X35	4
16	H3690	NUT M16-8G	4
17	H9569	KNIFE	24
18	H14626	RIGHT BLADE	11
19	H14627	LEFT BLADE	11
20	H9114	SCREW, HEX-HD M16X40	92
21	H9113	NUT M16X1.5	92

BEATER GEARS ASSEMBLY

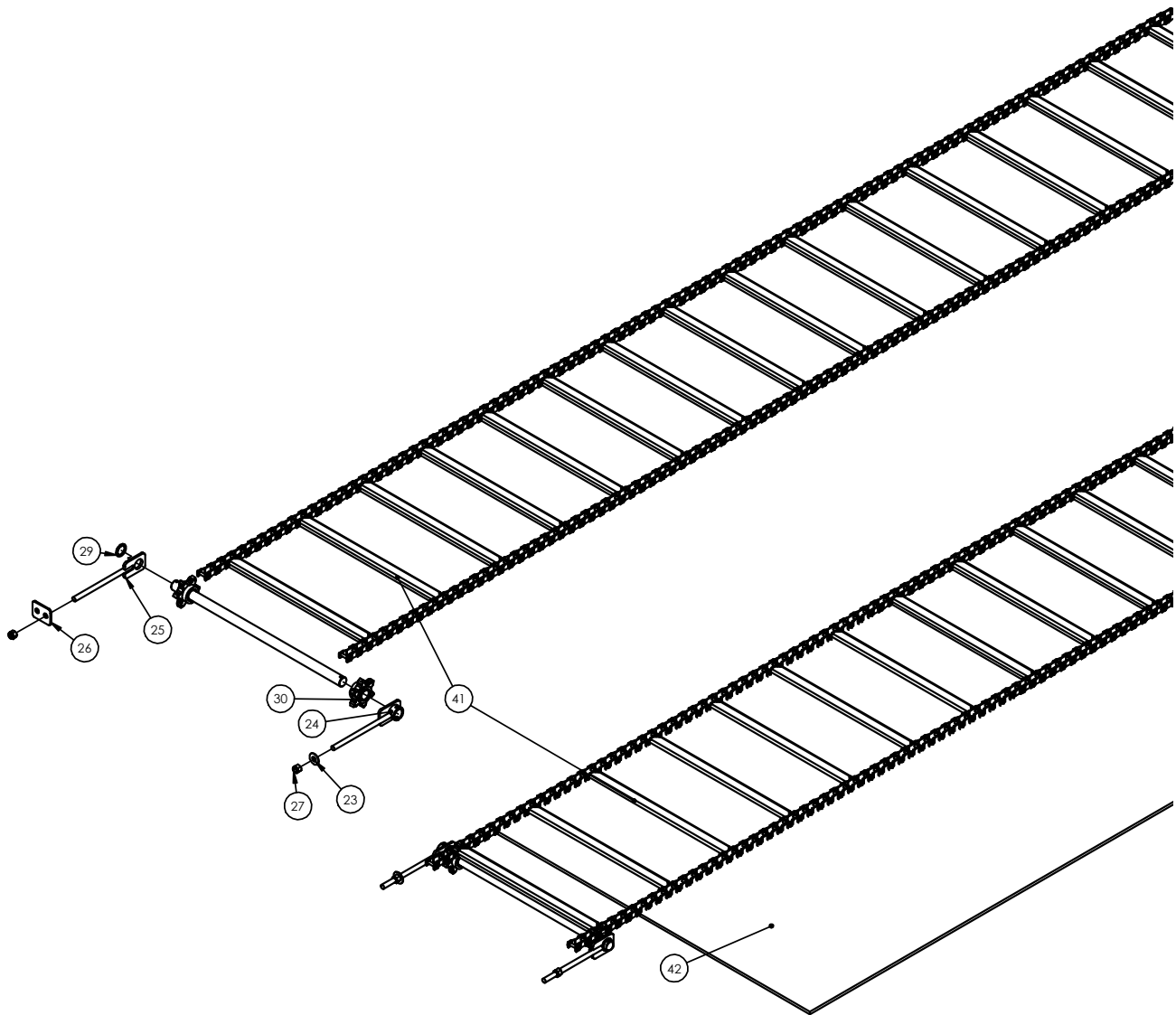


<u>ITEM NO.</u>	<u>PART NUMBER</u>	<u>DESCRIPTION</u>	<u>QTY.</u>
1	H3426	CIRCLIP E 40	3
2	H9476	PINION Z=13	3
3	H3346	BEARING 6308	2
4	H3427	CIRCLIP E 45	1
5	H9502	GEAR Z=20	1
6	H7478	BEARING 6309	1
7	H14937	SHAFT	1
8	H9524	SPACER	2
9	H9926	O-RING 2175	2
10	H9507	SHAFT	2
11	H9446	CALOTTE	2
12	H9536	GASKET	3
13	H3302	SCREW, HEX-HD M12X30	12
14	H7480	OIL SEAL 55/85/10	2
15	H13102	BEARING 6309-2RS	2
16	H9516	SPACER 40/51/25	2
17	H9477	GEAR Z=20	2
18	H3354	BEARING 30207	2
19	H14940	SPACER L=404.75	2
20	H3768	SCREW, HEX-HD M12X35	42
21	H9525	GASKET	6
22	H9441	HOUSING	2
23	H14938	SPACER L=209.65	1
24	H9440	HOUSING	1
25	H14939	SPACER L=209.65	1
26	H9179	OIL LEV. INDICATOR Ø1"GAS	1
27	H9706	PLUG Ø1/2"GAS	1
28	H9707	OIL PLUG 1/2"GAS	1
29	H12629	SPACER	1
30	H4910	BEARING 30208	1
31	H9445	HUB	1
32	H9509	SHAFT	1
33	H3342	BEARING 6208	1
34	H9537	OIL SEAL 48/80/10	1
35	H12150	HUB COMPLETE	1
36	H9539	CALOTTE COMPLETE	2

SLOP-GATE ASSEMBLY



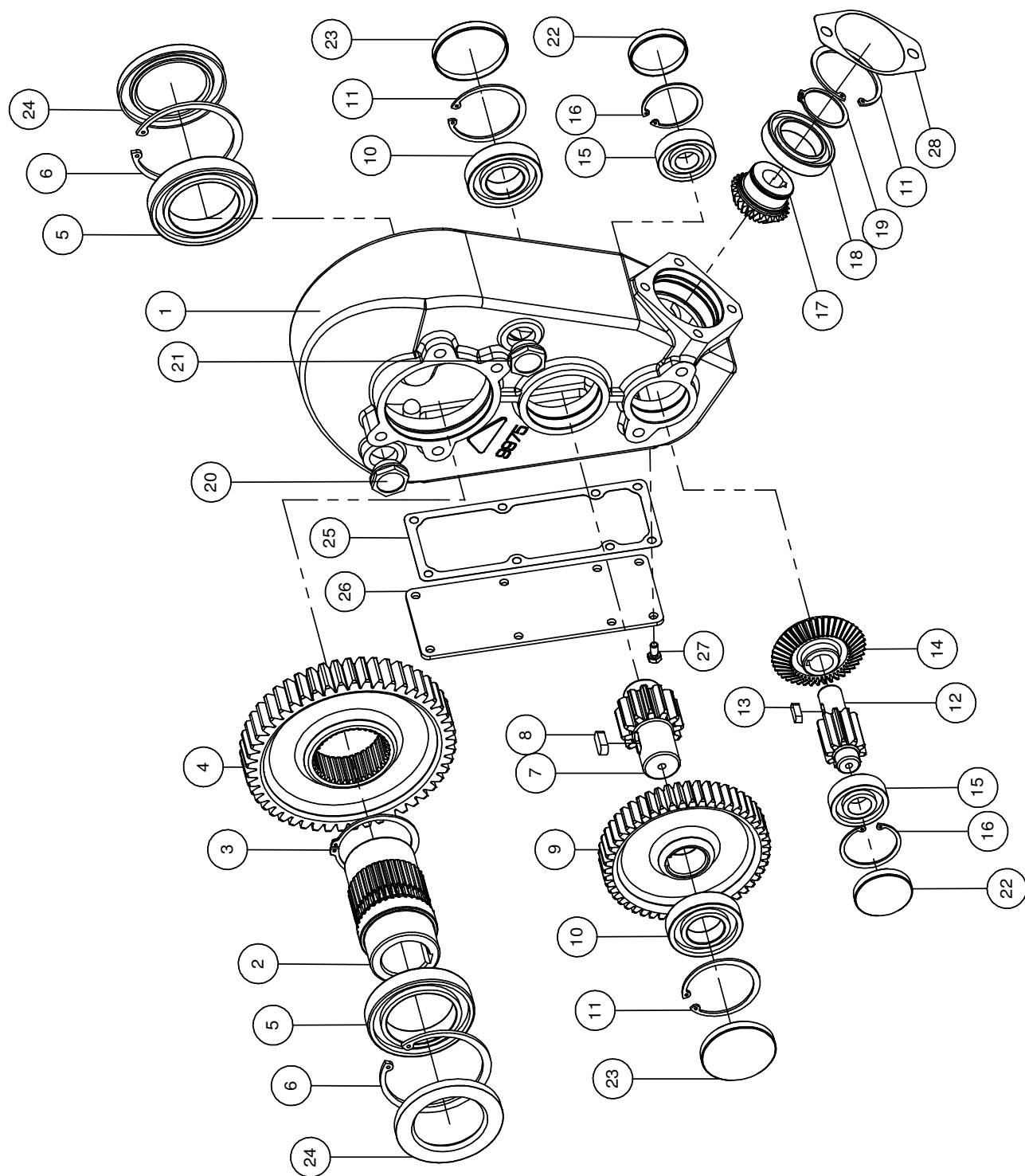
<u>ITEM NO.</u>	<u>PART NUMBER</u>	<u>DESCRIPTION</u>	<u>QTY.</u>
1	H140015-01	SLOP GATE	1
2	HC21-01-3116	CYLINDER, HYD 2" X 24" STROKE 3000#	2
3	H140015-02	SWINGING SECTION	1
4	H140033	FLASHING,SLOP GATE-MIDDLE	1
5	H140030	FLASHING,SLOP GATE, UPPER SIDE	2
6	H140031	FLASHING,SLOPGATE, LOWER SIDE	2
7	H140032	FLASHING,SLOP GATE-BOTTOM	1
8	H140038	BOTTOM SLOP GATE STRAP	2
9	H140039	LOWER SIDE SLOP GATE STRAP	2
10	H140040	UPPER SIDE SLOP GATE STRAP	2
11	H160019	SLOP GATE PIVOT PIN	2
12	021190	WASHER, FLAT 3/8 STD 7/16X X5/64 ZN	60
13	006690	BOLT, HHCS 3/8-16X1-1/4 GR5 ZN	30
14	021180	WASHER, LOCK 3/8 ZN	30
15	027260	NUT, HEX 3/8-16 GR5 ZN	30
16	990710	WASHER, FLAT 3/4 STD	16
17	990560	HBOLT 0.7500-10X2.5X2.5-N	8
18	1100238	NYLON INSERT LOCKNUT, 3/4-10 UNC	8

APRON CHAIN ASSEMBLY

ITEM NO.	PART NUMBER	DESCRIPTION	QTY.
1	H140502	V140, REAR	1
2	H140002	REAR GANG	1
3	H140006	SHAFT, APRON CHAIN-REAR	1
4	HC47-00-3122	MOTOR, HYD EATON 2000 SE	1
5	HM08-56-3077	SPROCKET, 66T 8T	4
6	R66305	KEY, SQUARE 1/2 X 2.0	4
7	HZ86-11-1245	SHCS, M12-1.75 X 45	4
8	H4138	BOLT, HHCS M14-2 X 30 GR8.8 ZN	10
9	005370	WASHER, LOCK 1/2 ZN	10
10	HO74-01-5069	GEARBOX, BERMA, RIGHT ANGLE	1
11	HK5050-4.5	KEY, SQ .5 X 4.5	1
12	H15560	TORQUE PLATE	1
13	H15566	BLOCK	2
14	H15571	TORK SUPPORT	1
15	156850	BOLT, CRG 1/2-13 X 1-1/2 SSN GR5 ZN	4
16	600140	NUT, HFH NYLOC	4
17	596840	REAR FLOOR SECTION	1
18	HZ82-01-0524	BOLT, CARRIAGE, 5/16"-18 X 1-1/2" Z5	18
19	022920	WASHER, FLAT 5/16 STD	18
20	023620	WASHER, LOCK 5/16 ZN 5	18
21	023630	NUT, HEX 5/16-18 GR5 ZN	18
22	598420	GEARBOX PLATE	1
23	990710	WASHER, FLAT 3/4 STD	2
24	H140005	OUTSIDE APRON TIGHTENER	2
25	H140004	INSIDE APRON TIGHTENER	2
26	H160024	CENTER TENSIONER PLATE	1
27	1100238	NYLON INSERT LOCKNUT, 3/4-10 UNC	4
28	H140003	APRON IDLER SHAFT	2
29	041460	WASHER, FLAT 1.62 X 2.12	2
30	H200074	6-TOOTH IDLER SPRKT	4
31	HZ82-01-0524	BOLT, CARRIAGE, 5/16"-18 X 1-1/2" Z5	12
32	022920	WASHER, FLAT 5/16 STD	12
33	023620	WASHER, LOCK 5/16 ZN 5	12
34	023630	NUT, HEX 5/16-18 GR5 ZN	12
35	H160074	LIGHT BRKT	2
36	485670	LIGHT, 4-PIN DUAL D-RIGHT	1
37	485660	LIGHT, 4-PIN DUAL D-LEFT	1
38	020430	WASHER, FLAT 5/8 STD	12
39	990610	BOLT, HHCS 5/8-11 X 1 1/2 GR5 ZN	8
40	I124589	NUT, HEX 5/8-11 GR5 ZN	8
41	H140014	APRON CHAIN	2
42	596820	UHMW FLOOR, 16'	1
43	014770	BOLT, HHCS .50-13X1.50	14
44	005370	WASHER, LOCK 1/2 ZN	16
45	005360	NUT, HEX, 1/2" Z5	16
46	042960	HBOLT 0.2500-20X1X1-N	4
47	029440	WASHER, LOCK 1/4 SAE	4
48	027660	NUT, HEX 1/4-20 GR5 ZN	4
49	HO74-01-5069	GEARBOX, BERMA, RIGHT ANGLE	1
50	HC47-00-3122	MOTOR, HYD EATON 2000 SE	1

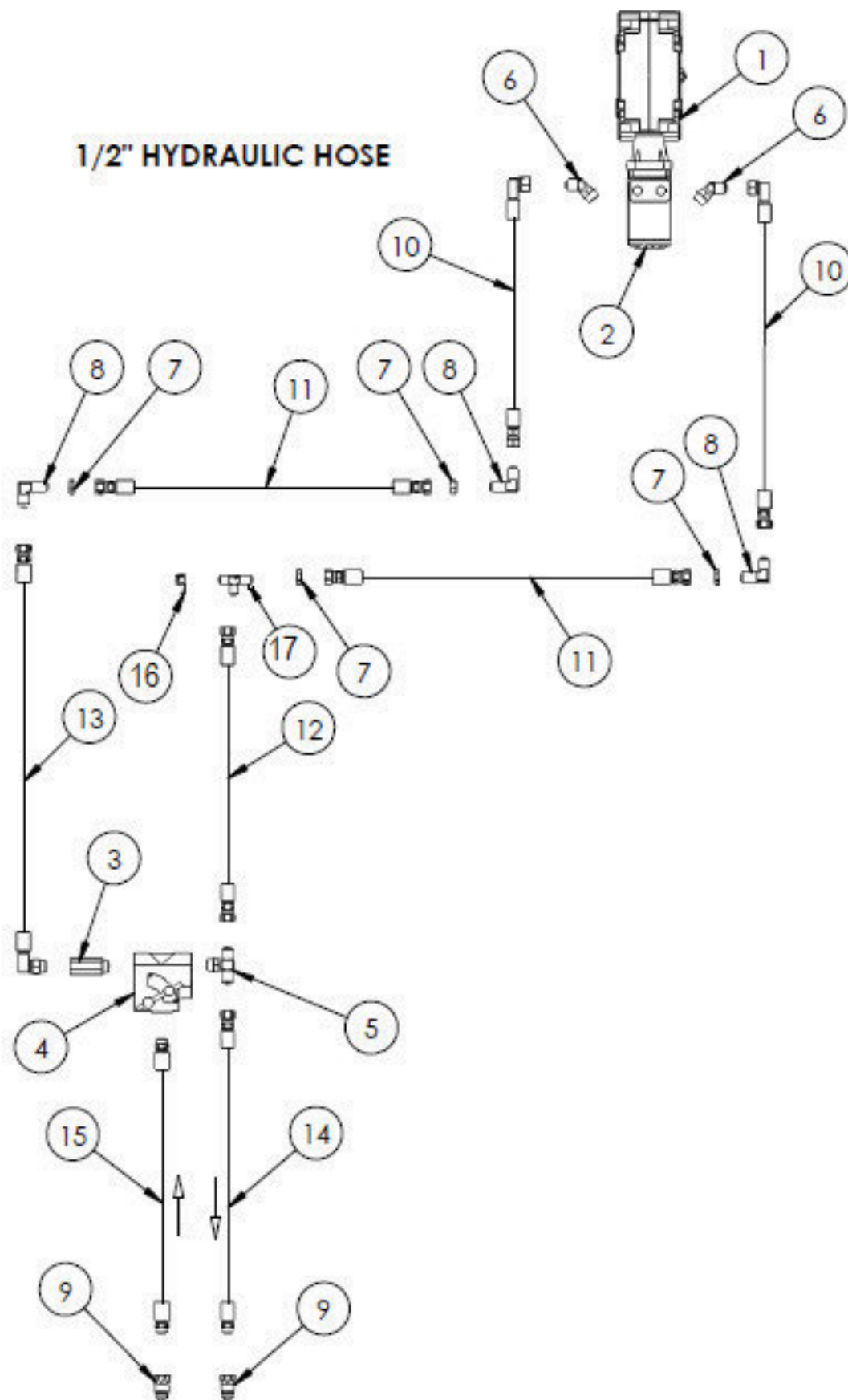
ITEM NO.	PART NUMBER	DESCRIPTION	QTY.
1	H140502	V140, REAR	1
2	H140002	REAR GANG	1
3	H140006	SHAFT, APRON CHAIN-REAR	1
4	HC47-00-3122	MOTOR, HYD EATON 2000 SE	1
5	HM08-56-3077	SPROCKET, 66T 8T	4
6	R66305	KEY, SQUARE 1/2 X 2.0	4
7	HZ86-11-1245	SHCS, M12-1.75 X 45	4
8	H4138	BOLT, HHCS M14-2 X 30 GR8.8 ZN	10
9	005370	WASHER, LOCK 1/2 ZN	10
10	HO74-01-5069 [PG. 50]	GEARBOX, BERMA, RIGHT ANGLE	1
11	HK5050-4.5	KEY, SQ .5 X 4.5	1
12	H15560	TORQUE PLATE	1
13	H15566	BLOCK	2
14	H15571	TORK SUPPORT	1
15	156850	BOLT, CRG 1/2-13 X 1-1/2 SSN GR5 ZN	4
16	600140	NUT, HFH NYLOC	4
17	596840	REAR FLOOR SECTION	1
18	HZ82-01-0524	BOLT, CARRIAGE, 5/16"-18 X 1-1/2" Z5	18
19	022920	WASHER, FLAT 5/16 STD	18
20	023620	WASHER, LOCK 5/16 ZN 5	18
21	023630	NUT, HEX 5/16-18 GR5 ZN	18
22	598420	GEARBOX PLATE	1
23	990710	WASHER, FLAT 3/4 STD	2
24	H140005	OUTSIDE APRON TIGHTENER	2
25	H140004	INSIDE APRON TIGHTENER	2
26	H160024	CENTER TENSIONER PLATE	1
27	1100238	NYLON INSERT LOCKNUT, 3/4-10 UNC	4
28	H140003	APRON IDLER SHAFT	2
29	041460	WASHER, FLAT 1.62 X 2.12	2
30	H200074	6-TOOTH IDLER SPRKT	4
31	HZ82-01-0524	BOLT, CARRIAGE, 5/16"-18 X 1-1/2" Z5	12
32	022920	WASHER, FLAT 5/16 STD	12
33	023620	WASHER, LOCK 5/16 ZN 5	12
34	023630	NUT, HEX 5/16-18 GR5 ZN	12
35	H160074	LIGHT BRKT	2
36	485670	LIGHT, 4-PIN DUAL D-RIGHT	1
37	485660	LIGHT, 4-PIN DUAL D-LEFT	1
38	020430	WASHER, FLAT 5/8 STD	12
39	990610	BOLT, HHCS 5/8-11 X 1 1/2 GR5 ZN	8
40	I124589	NUT, HEX 5/8-11 GR5 ZN	8
41	H140014	APRON CHAIN	2
42	596820	UHMW FLOOR, 16'	1
43	014770	BOLT, HHCS .50-13X1.50	14
44	005370	WASHER, LOCK 1/2 ZN	16
45	005360	NUT, HEX, 1/2" Z5	16
46	042960	HBOLT 0.2500-20X1X1-N	4
47	029440	WASHER, LOCK 1/4 SAE	4
48	027660	NUT, HEX 1/4-20 GR5 ZN	4
49	HO74-01-5069	GEARBOX, BERMA, RIGHT ANGLE	1
50	HC47-00-3122	MOTOR, HYD EATON 2000 SE	1

GEARBOX ASSEMBLY



<u>ITEM NO.</u>	<u>PART NUMBER</u>	<u>DESCRIPTION</u>	<u>QTY.</u>
2	H10317	HUB GEAR Ø1.96"	1
3	H9918	SNAP RING, EXT 3.23"	1
4	H9974	RING GEAR 49 TOOTH	1
5	H9982	PILLOW BEARING 6015	2
6	H9984	SNAP RING, INT 4.53"	2
7	H8670-5	RETURN PINION 12 TOOTH	1
8	H4174	KEY .47"X.31"X 1.18"	1
9	H8670-4	RING GEAR 50 TOOTH	1
10	H3342	PILLOW BEARING 6208	2
11	H3435	SNAP RING, INT 3.15"	3
12	H8670-3	RETURN PINION 10 TOOTH	1
13	H3396	KEY .31"X.28"X.98"	1
14	H8670-2	BEVEL GEAR 43 TOOTH	1
15	H8596	PILLOW BEARING 6305	2
16	H3433	SNAP RING, INT 2.44"	2
17	H8670-1	BEVEL GEAR 28 TOOTH	1
18	H1538	PILLOW BEARING 6010	1
19	H3428	SNAP RING, EXT 1.97"	1
20		PLUG, FILL Ø 1"	2
21	H1831	PLUG, OIL CHECK Ø 1	2
22	H8625	CAP Ø 2.44"	2
23	H8243	CAP Ø 3.15"	2
24	H9983	SEAL, DUST 2.95X4.53X.39	2
25	H9977	GASKET, COVER	1
26		COVER, ACCESS	1
27	H3284	BOLT, METRIC M8X16-8G	8
28	H8671	GASKET, DRIVE	1

APRON CHAIN HYDRAULICS ASSEMBLY



ITEM NO.	PART NUMBER	DESCRIPTION	QTY.
1	H15569	GEARBOX	1
2	HC47-00-3122	MOTOR, HYD 14.1 CU IN 4 BOLT	1
3	SD205729	VALVE, CHECK 10 MOR – 10 FOR	1
4	C67-04-3137	VALVE, FLOW CONTROL 10 ORB	1
5	MP09.74129	TEE, HYD, #10 MALE JIC X #10 MALE JIC X #10 ORING	1
6	MP40.00263	ELBOW - 45D 1/2 JICXORB 7/8-14	2
7	T52-90-0808	BULKHEAD, ADAPTER NUT 3/4"-16	4
8	T52-77-0808	BULKHEAD, 90 DEGREE 3/4"-16 X 3/4"-16	3
9	MP09.74158	COUPLER - QUICK 3/4-16 ORB MALE	2
10	H140043	HOSE, HYD MOTOR SUPPLY AND RETURN	2
11	H140044	HOSE, FRONT BULKHEAD CONNECTION	2
12	H160088	EXHAUST HOSE, BULKHEAD TO TEE	1
13	H160089	HOSE, BULKHEAD TO RESTRICTOR	1
14	H160090	HOSE, TRACTOR RETURN	1
15	H160091	HOSE, TRACTOR SUPPLY	1
16	588570	CAP JIC 3/4	1
17	HT52-79-0606	BULKHEAD, RUN TEE 9/16"-18	1

<u>ITEM NO.</u>	<u>PART NUMBER</u>	<u>DESCRIPTION</u>	<u>QTY.</u>
1	HC21-01-3116	CYLINDER, HYD 2" X 24" STROKE	2
2	HT52-79-0606	BULKHEAD, RUN TEE 9/16"-18	2
3	HT52-77-0606	BULKHEAD, 90 DEGREE 9/16"-18 X 9/16"-18	4
4	HT52-90-0606	BULKHEAD, ADAPTER NUT 9/16"-18	6
5	MP09.74158	PIONEER TIP, 3/4-16, M	2
6	H140045	HOSE, BULKHEAD TO CYLINDER	4
7	H160094	HOSE, RIGHT FRONT BULKHEAD	2
8	H160095	HOSE, LEFT FRONT BULKHEAD	2
9	H160096	HOSE, TRACTOR CONNECTION	2

NOTES:

Blank lined paper for writing.

[illegible]

NOTES:



NOTES:



Art's-Way Manufacturing Co., Inc. TECHNICAL MANUALS

Manuals are available from your local dealer or Art's-Way Manufacturing Co., Inc. for the operation, service, and repair of your machine. For prompt convenient service, contact your local dealer for assistance in obtaining the manuals for your machine.

Your local dealer can expedite your order for operator manuals, illustrated parts catalogs, service manuals, and maintenance records.

Always give the Machine Name, Model, and Serial Number so your local dealer can provide the correct manuals for your machine.

Art's-Way Manufacturing Co., Inc. reserves the right to make improvements in design or changes in specifications at any time without incurring any obligation to install them on units previously sold.

Except as expressly authorized, no part of this manual may be reproduced, copied, transmitted, disseminated, downloaded or stored in any storage medium, for any purpose without the express prior written consent of Art's-Way Manufacturing Co., Inc.

ART'S-WAY MANUFACTURING CO., INC.

HWY 9 WEST - PO Box 288

Armstrong, IA. 50514 U.S.A

© Copyright 2012

ART'S-WAY MANUFACTURING CO., INC.

All Rights Reserved