



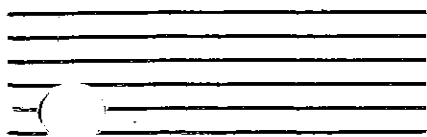
ARTS-WAY



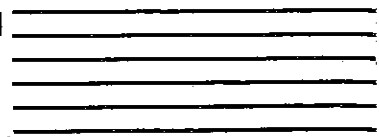
**OPERATOR
AND
PARTS MANUAL
FOR
FARM UNIT
CORN
SHELLER**

Model 120-A

**Includes Mounting Instructions
For Model 450
Feed Mixer and Mill**



ARTS-WAY



Manufacturing Company / Armstrong, Iowa 50514 / Phone (712) 864-3131

DELIVERY SERVICE FOR ARTS-WAY EQUIPMENT

This form must be filled out by the dealer and signed by both the dealer and the customer at the time of delivery.

Delivered to _____ Dealer _____

R.R. No. _____ Box No. _____ Town _____ State _____

Town _____ Serial No. _____

State _____ Zip _____ Product _____

I have thoroughly instructed the buyer on the above described equipment which review included the Operator's Manual content, equipment care, adjustments, and safe operation. The warranty policy provisions were also explained and reviewed.

DEALER'S SIGNATURE

Above equipment and Operator's Manual have been received by me and I have been thoroughly instructed as to care, adjustments, safe operation and applicable warranty policy.

DATE

OWNER'S SIGNATURE

----- FOLD BACK HERE AND ADD CARBON -----

DEALER'S COPY

DELIVERY SERVICE FOR ARTS-WAY EQUIPMENT

This form must be filled out by the dealer and signed by both the dealer and the customer at the time of delivery.

Delivered to _____ Dealer _____

R.R. No. _____ Box No. _____ Town _____ State _____

Town _____ Serial No. _____

State _____ Zip _____ Product _____

I have thoroughly instructed the buyer on the above described equipment which review included the Operator's Manual content, equipment care, adjustments, and safe operation. The warranty policy provisions were also explained and reviewed.

DEALER'S SIGNATURE

Above equipment and Operator's Manual have been received by me and I have been thoroughly instructed as to care, adjustments, safe operation and applicable warranty policy.

DATE

OWNER'S SIGNATURE

OWNER'S COPY

CUT ALONG THIS LINE FIRST

DELIVERY SERVICE FOR ARTS-WAY EQUIPMENT

This form must be filled out by the dealer and signed by both the dealer and the customer at the time of delivery.

Delivered to _____ Dealer _____

R.R. No. _____ Box No. _____ Town _____ State _____

Town _____ Serial No. _____

State _____ Zip _____ Product _____

I have thoroughly instructed the buyer on the above described equipment which review included the Operator's Manual content, equipment care, adjustments, and safe operation. The warranty policy provisions were also explained and reviewed.

DEALER'S SIGNATURE _____

Above equipment and Operator's Manual have been received by me and I have been thoroughly instructed as to care, adjustments, safe operation and applicable warranty policy.

OWNER'S SIGNATURE _____

DATE _____

ARTS-WAY OFFICE COPY

TABLE OF CONTENTS

OPERATOR'S MANUAL

DESCRIPTION	PAGE
TO THE OWNER	2
WARRANTY	2
SAFETY	2-3
Safety Rules	2
Safety Decals	3
OPERATION	4-11
Introduction	4
Installation	4
General Operation	11
ADJUSTMENTS	12
LUBRICATION	13
SERVICE	14
SPECIFICATIONS	14

PART'S LIST

DESCRIPTION	PAGE
SHELLER DRIVE AND SHIELDS	15-16
HOPPER AND DRAG FEEDER PARTS	17-18
SHELLER ASSEMBLY	19-20

TO THE OWNER

This Arts-Way unit is the finest equipment made and the purpose of this manual is to assist you in realizing the benefits you anticipated when you purchased this unit. Many people have contributed to the production of this product. They all have an interest in its successful performance and we are providing this manual to give you the benefit of the experience we have gained through the years of building and testing this equipment. The way you operate and the care you give this unit will have much to do with the successful performance of this unit. This operators manual has been carefully prepared and illustrated to make it as easy as possible for you in the operation of your unit. It will pay you to read the entire manual carefully and familiarize yourself with all operations before operating the unit. Keep this manual handy for reference. We will be glad to answer any questions you may have. For further information call or write Arts-Way Mfg. Co., (712) 864)3131, Armstrong, Iowa, 50514.

WARRANTY

The material and workmanship in this unit is, to the extent manufactured and produced by the ARTS-WAY MANUFACTURING CO. and subject to the terms and conditions contained in our Sales Order, warranted for a period of one year after shipment from our factory. Elements not manufactured in the Arts-Way factory are warranted only to the extent warranted by the manufacturer thereof.

WORK SAFELY — FOLLOW THESE RULES



This safety alert symbol identifies important safety messages in this manual. It means — **ATTENTION! BECOME ALERT! YOUR SAFETY IS INVOLVED!** When you see this symbol, be alert to the possibility of personal injury and read the message that follows.

A CAREFUL OPERATOR IS THE BEST INSURANCE AGAINST AN ACCIDENT.

BEFORE OPERATING

Do not wear loose-fitting clothing which may catch in moving parts.

Use extreme care when making adjustments. Shut off machine before making adjustments.

After servicing, be sure all tools, parts, or servicing equipment are removed from the machine.

Keep all safety shields in place.

Make sure that there is no one near the machine before operating.

Be sure that the correct power take-off parts are used and that they are properly secured.

Be sure the tractor power take-off is disengaged before starting the tractor engine.

DURING OPERATION

No one other than the operator should ride on the tractor.

Do not attempt to remove any obstructions while operating the machine.

Always disengage the auger drag before transporting. Do not open any covers and expose the rotor or belts while they are rotating.

Shut off the tractor engine and be sure to wait until all moving parts have come to a complete stop before adjusting, cleaning, or lubricating.

Keep hands, feet, clothing and objects away from moving parts.

Use extreme care when operating over uneven or rough terrain.

Keep all shields in place and in good condition.

Keep children away from machine in operation.

ON-HIGHWAY OPERATION

Check clearance carefully before towing the grinder-mixer over bridges and into buildings.

Always place the machine in the transport position.

For daytime and nighttime, accessory light and devices should be used for adequate warning to operators of other vehicles.

Comply with your state and local laws governing highway safety, and with regulations when moving machinery on a highway.

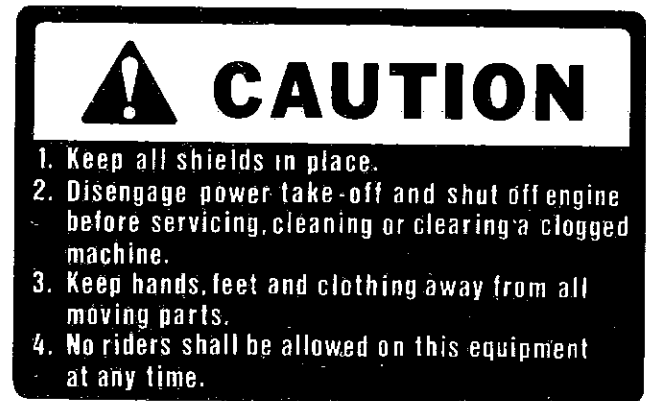
Drive at a reasonable speed to maintain complete control of the machine at all times.

When transporting on the highway, it is recommended that a safety chain be used with the tractor and grinder-mixer.

SAFETY DECALS

Located at strategic points on this attachment are safety decals. These decals warn you of potential danger if the warnings on the decals are not followed. Please note decal locations shown in the Model 450 Grinder-Mixer Manual, Part No. 099-14565-0.

"CAUTION" — Safety Shield Caution Decal, Part No. 447-11538-0. Lists four basic rules to be observed at all times around this machine. (This is located on the top of the Sheller Drive Belt Shield.)



"CAUTION" — Decal Part No. 447-04927-0. Never open any cover while the cutting mechanism inside is operating. (Located on Hammermill Door used with or without Corn Sheller Bypass Attachment.)

OPERATION

INTRODUCTION

This manual has been prepared to acquaint the new owners with the Arts-Way Corn Sheller Attachment. It should help you better understand the efficient operation and care of your attachment on your portable grinder-mixer unit.

The Corn Sheller Attachment can be used to shell ear corn and then grind the shelled corn in the hammermill. The hammermill bypass can be used to transfer whole shelled corn from the sheller directly into the mixer tank. A flipper panel in the sheller throat can also direct the ear corn or grain into the hammermill without passing through the sheller.

NOTE: Refer to the Model 450 Feed Mixer and Mill Operator's Manual [Part No. 099-14565-0] for general operation and maintenance information [or latest revision].

INSTALLATION

The Corn Sheller Attachment can be installed on any Model 450 grinder-mixer unit. An auger drag feeder is necessary to obtain best usage from this attachment. A magnet and feed roll may be considered necessary under various conditions.

The following steps are necessary to prepare the mill and frame for installation of the corn sheller attachment:

1. Remove auger drag feed and mill hopper, if so equipped.
2. Locate tank brace to frame as shown in Figure 1. Weld brace securely to tank and frame junctions.
3. Torch square stop, Item 1, Figure 2, at mill throat outline so that it does not protrude. Torch this item at both front and rear of mill throat (2 sides).
4. Torch off strap, Item 2, Figure 2, from underside of mill throat. This strap interferes with

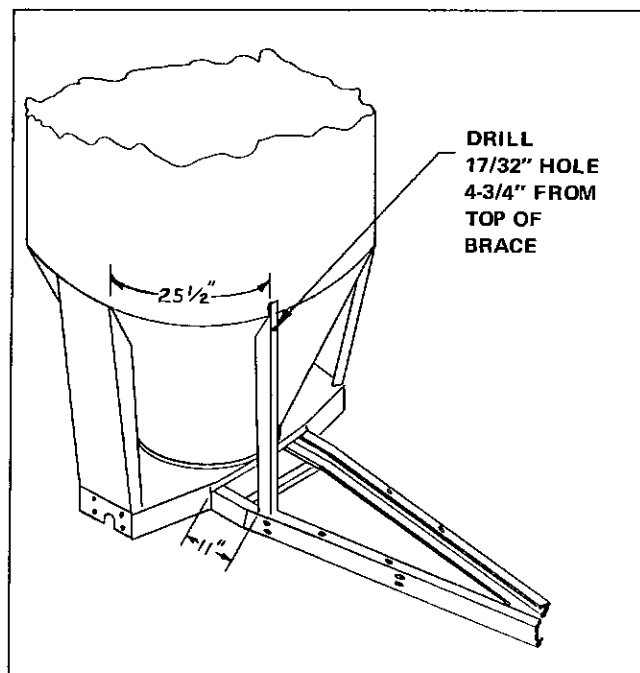


Figure 1 — Tank Brace Location

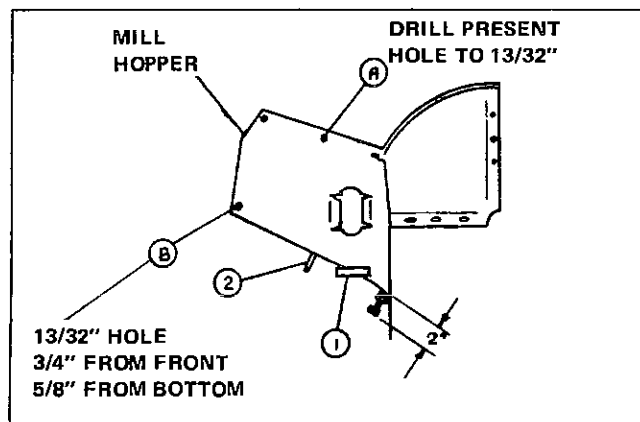


Figure 2 — Mill Throat

the corn sheller housing and must be removed.

5. Enlarge hole at Point A, Figure 2, to 13/32" diameter on both front and rear of mill throat.
6. Drill a 13/32" diameter hole at Point B, Figure 2, on both front and rear of mill throat (2 sides).

7. Adjust (3) hay retard bolts to a maximum of 2" distance from mill throat to end of bolt hex head. See Figure 2.
8. Install the sheller drive pulley to the end of the 14-groove hammermill pulley as follows:
 - a) Cut keystone flush with end of the 14-groove pulley, Point A, Figure 3.
 - b) In the center of the hammermill cylinder shaft, drill a $27/64"$ (.422) diameter hole 1-1/2" deep. Then tap 1/2 - 13 NC threads 1" deep.
 - c) Slide the single pulley hub, Item 1, Figure 3, inside the hammermill cylinder pulley.
 - d) Place special lock washer, Item 2, Figure 3, in position and install 1/2 x 2-3/4 hex cap screw, Item 3, Figure 3. Tighten cap screw to 75 ft-lbs and secure hex head with edges of special washer tight against edges of bolt head.

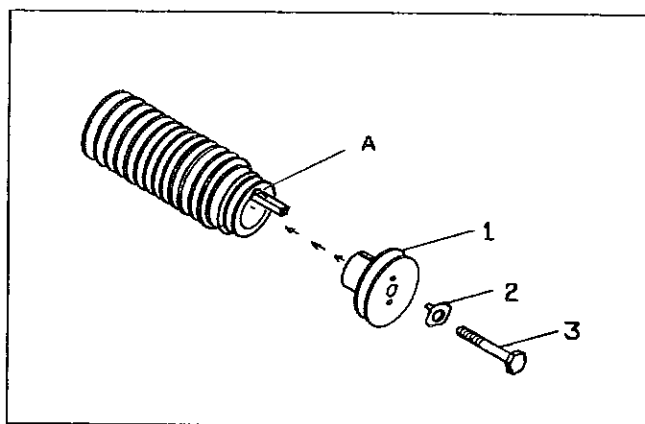


Figure 3 — Drive Pulley Installation

9. Attach front and rear bottom frame angles, Items 56 and 57, page 19, to main frame channel with 4 each 1/2 x 1-1/2 carriage bolts, flat washers, lock washers and hex nuts. Leave these bolts loose until the sheller unit is properly located. See Figure 4.

10. Install rear frame spacer to top of rear angle, Items 58 and 56, page 19, with 2 each 1/2 x 1-1/2 carriage bolts, flat washers, lock washers and hex nuts.

NOTE: Overlap frame spacer, Item 58, 3/8 inch beyond end of rear angle, Item 56, initially. Leave these bolts snug but loose until the sheller unit is properly located. See Figure 4.



Figure 4 — Mounting Angles
[shield removed for clarity]

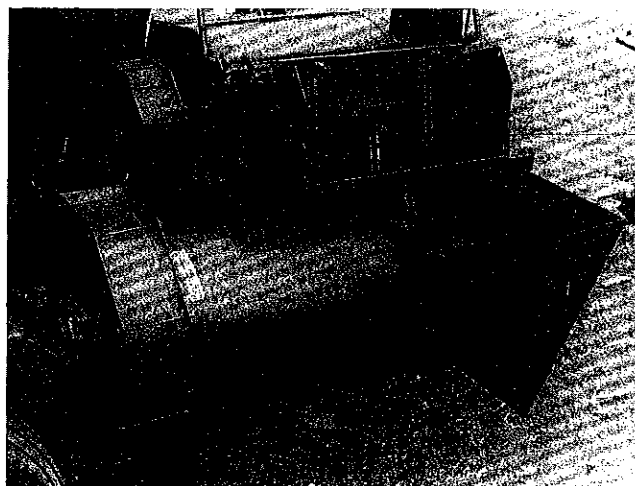


Figure 5 — Mounted Sheller Body

11. Position the sheller main assembly on to the frame angles and fasten with 4 each 1/2 x 1-1/2 carriage bolts, lock washers and hex nuts. See Figure 5.

12. Bolt corner support brace, Item 24, page 17, to top right hopper side portion, Item 23, page 17, with 2 each 1/4 x 1/2 slotted truss head screws, flat washers, lock washers and hex nuts. Position the upper point of corner brace flush with the break line on the hopper side.



Figure 6 — Slanted Hopper Bottom

13. Attach top right hopper side portion, Item 23, page 17, to sheller unit with 3 each $\frac{3}{8}$ x $\frac{3}{4}$ hex head cap screw, flat washer, lock washer and hex nuts. Keep outer edge of hopper side flush with outer edge of sheller housing, Point E, Figure 7.

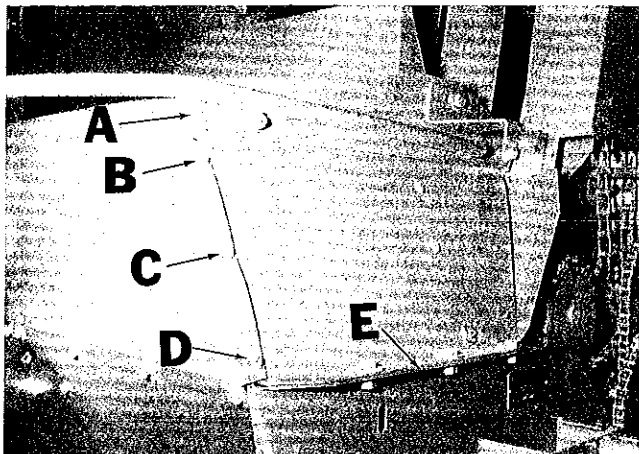


Figure 7 — Right Hopper Side
[shield removed for clarity]

Also install to front mill throat at Point A, Figure 7, one $\frac{3}{8}$ x 1 slotted truss head screw, flat washer, lock washer and hex nut. Install at Point B, Figure 7, one $\frac{3}{8}$ x $1\frac{1}{2}$ hex cap screw, (4) flat washers, one lock washer and hex nut. Use two of the flat washers between Items 23 and 30, page 17, and one flat washer on each side at Point B, Figure 7.

14. Install angle, flap and plate, Item 19, page 17, with 4 each $\frac{1}{4}$ x $\frac{3}{4}$ slotted truss head screws, flat washers, lock washers, and hex nuts. Install this flap assembly into Item 23, page 17, and sheller housing with rod, Item 14, page 17. Secure with a $\frac{5}{16}$ flat washer and $\frac{3}{32}$ x 1 cotter pin on each end of the rod. See Figures 8 and 9.

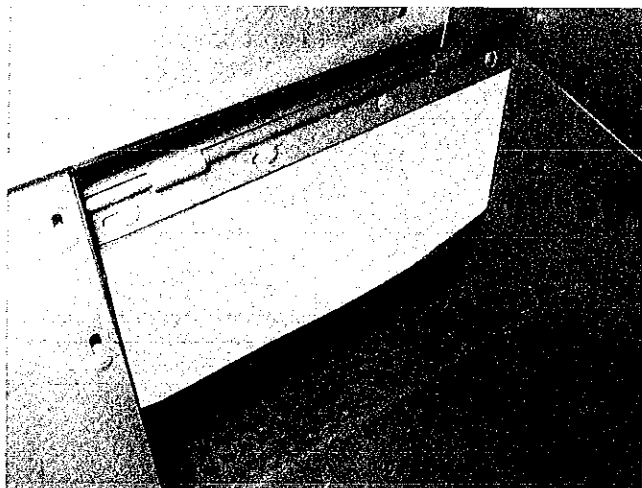


Figure 8 — Hopper Area

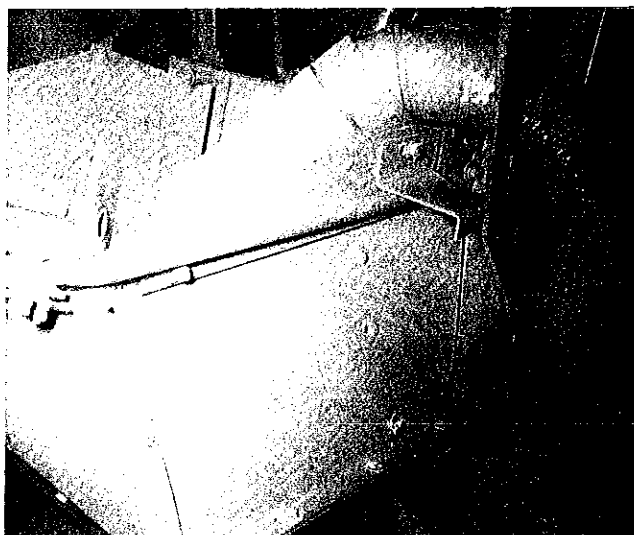


Figure 9 — Hopper
[shield removed for clarity]

15. Attach left slanted hopper bottom, Item 20, page 17, to sheller unit with 4 $\frac{1}{4}$ x $\frac{1}{2}$ slotted truss head screws, 3 each flat washers, lock washers and hex nuts and one serrated flanged nut. Use the serrated flange nut on the lower of three slotted truss head screws. See Figure 6.

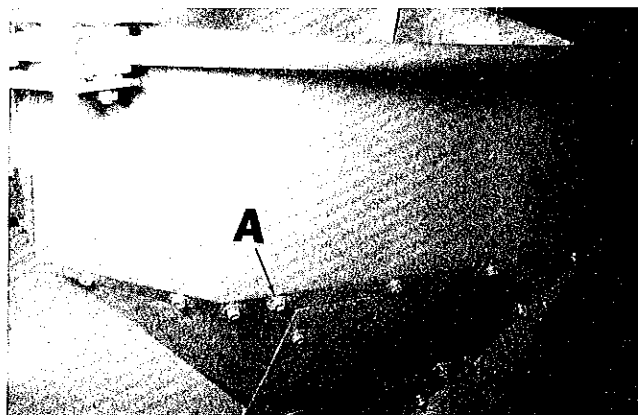


Figure 10 — Hopper

16. Attach top left and front hopper portion, Item 22, page 17, to sheller housing and rear mill throat. This section uses (1) $\frac{1}{4}$ x $\frac{3}{4}$ slotted truss head screw at Point A, Figure 10, (10) $\frac{1}{4}$ x $\frac{1}{2}$ slotted truss screws in the remaining holes. Also use (4) $\frac{1}{4}$ flat washers at Points A, B, C and D, Figure 7, and (11) $\frac{1}{4}$ lock washers and (11) $\frac{1}{4}$ hex nuts.

17. Remove (2) hex nuts and lockwashers from Points A and B on large blower housing, Figure 11. Install brace, Item 27, page 19, and add (2) 5/16 flat washers, lock washers and hex nuts and tighten bolts.

18. Tighten the four carriage bolts, Figure 4, holding the sheller mounting angles to the main frame. Tighten the two carriage bolts, Figure 4, between spacer channel and rear sheller mounting angle.

19. Install support rod, Item 28, page 19, through brace, Item 27, page 19, and attach to tank brace hole, See Figure 1, with (1) 1/2 x 1-1/2 hex cap screw, lock washer and hex nut. With hex nut on each side of brace, Item 27, page 19, tighten nut on support rod until clearance under mill throat is even at both front and rear of mill throat. Tighten nuts on support rod securely.

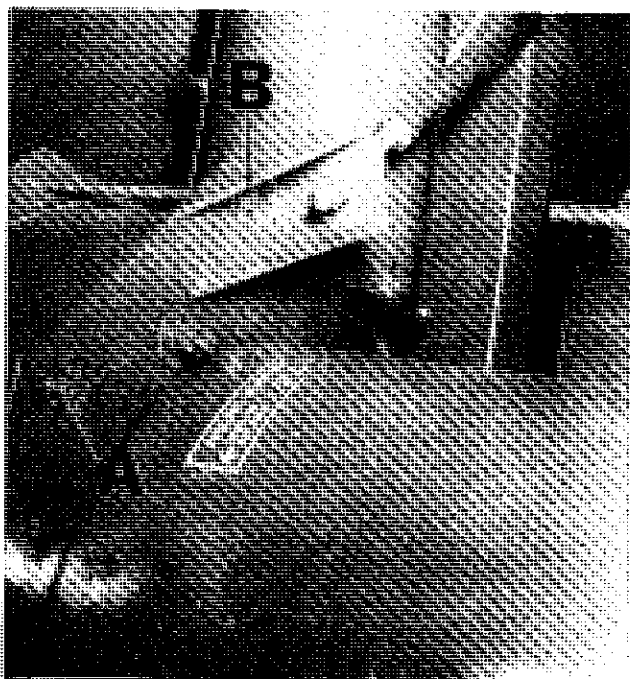


Figure 11 — Support Rod and Brace

20. Weld filler plates securely in place and remove the two 5/16 hex cap screws and nuts holding the rear mill filler plate, Point A, Figure 12. Install the drag support hanger assembly, Item 9, page 17, to the sheller hopper area. Fasten at the front side with bolts used to hold Item 23, page 17, to the mill throat plus an additional 3/8 x 1 slotted truss head screw, flat washer, lock washer and hex nut. At the rear side, fasten the upper front corner with a 3/8 x 1 slotted truss head screw, lock washer and hex nut. The upper rear corner uses a 3/8 x 1 hex head cap screw, (4) 3/8 flat washers, a 3/8 lock washer and hex nut. A new 13/32 diameter hole must be drilled thru the

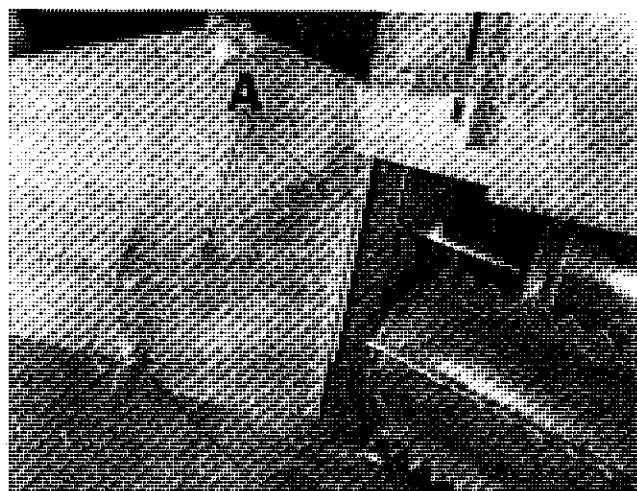


Figure 12 — Rear Mill Filler Plate

mill throat at the lower rear hole in the hanger, Item 9, page 17. The chute plate, Item 15, page 17, is then attached at this hole with a 3/8 x 1-1/4 hex head cap screw, flat washer and hex lock nut. Tighten enough to allow the chute to pivot. A new 13/32 diameter hole must also be drilled thru the mill throat at the front side to allow the chute to pivot at the front. Locate hole at Point A, Figure 13. Attach with a 3/8 x 1-1/4 hex head cap screw and hex lock nut. Tighten enough to allow the chute to pivot. Drill the 2 holes where the rear mill filler plate fastens thru the drag support hanger with an 11/32 diameter hole. Install (2) each 5/16 x 1 hex head cap screw, lock washers and hex nuts, at Point A, Figure 12.

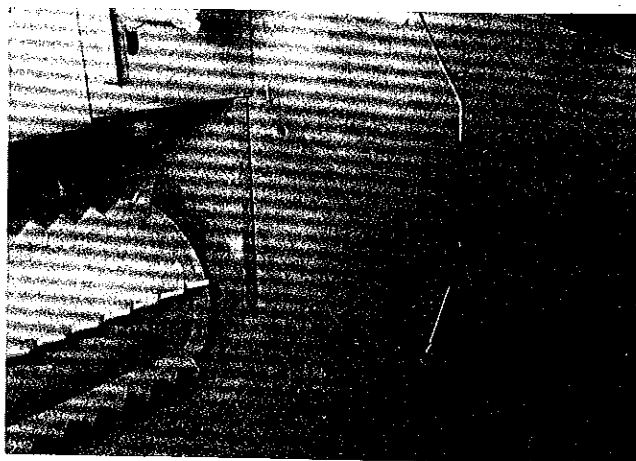


Figure 13 — Chute Pivot Point

21. Install bracket, Item 2, page 15, in center hole at front of mill throat using existing bolt. See Figure 14.

22. Install side bottom frame angle, Item 59, page 19, to underside of frame angles. Now tighten the remaining 1/2 x 1-1/2 carriage bolts between sheller housing and mounting angles.

8 — Operation

22-A. Install corn thrower pipe, Item 41, page 19, over fan housing, Item 43, page 19, and attach at top on pipe to angle on sheller housing with a 5/16 x 3/4 hex head cap screw, lock washer and hex nut. See Figure 14.

22-B. Place elbow, Item 40, page 19, over pipe, Item 41, page 19, and attach at mounting tabs with 2 each 5/16 x 3/4 hex head cap screws, lock washers and hex nuts. See Figure 14.

23. Attach 4 inch elbow, Item 39, page 19, to elbow, Item 41, page 19, with 8 inch piece of wire. Install wire piece thru tabs in elbows in a figure 8 pattern and twist securely.

24. Slide canvas boot, Item 42, page 19, on to 4 inch elbow about 5 inches up. Tie boot securely at upper end. Trim lower end of boot so that there is about a 1/2 inch gap between boot and mill hopper.



Figure 14 — Corn Thrower Pipe
[shield removed for clarity]

25. Assemble drag roller support items over drag hanger rod, Item 9, page 17. See Figure 15. Install U bracket, Item 1, page 17, at top, flat bracket, Item 2, page 17, at bottom, with (4) sleeves, (4) rollers and (8) flat washers in between, Items 4, 5 and 6, page 17. A flat washer is placed on each end of sleeves. Use (4) 3/8 x 2-1/2 hex head cap screws, (8) 3/8 flat washers and (4) 3/8 lock washers and hex nuts. Make sure rollers turn free/oil.

26. Attach bottom cob stacker pipe, Item 6, page 19, to blower housing with 4 each 5/16 x 3/4 carriage bolts, flat washers, lock washers and hex

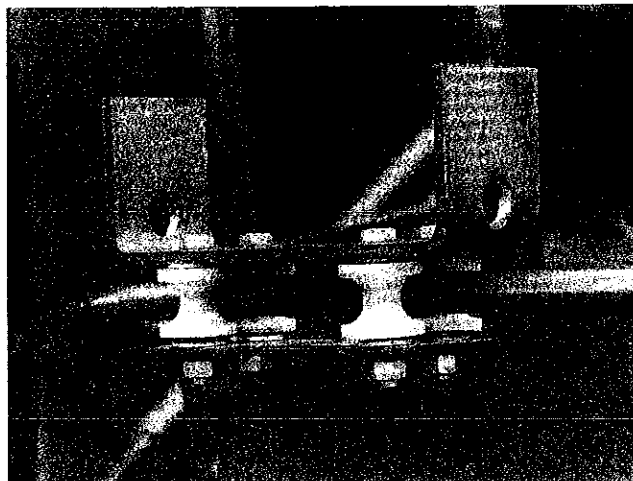


Figure 15 — Drag Roller Support

nuts. Position pipe with approximately a 1/2 inch clearance between tank and pipe. See Figure 16.

27. Attach pipe swivel collar, Item 5, page 19, to bottom cob stacker pipe, Item 6, page 19, with swivel clamp ring, Item 12, page 19. Apply grease between swivel clamp rings and bands on pipe collars. Adjust swivel clamp rings so that upper pipe swivel collar, Item 5, page 19, turns, but not too loose or tight. The three swivel clamp rings are attached with (3) 5/16 x 1 hex head cap screws, (8) 5/16 flat washers, (3) 5/16 lock washers and hex nuts. See Figure 16.

28. Attach clean out door, Item 7, page 19, to bottom pipe, Item 6, page 19, with (2) 5/16 wing nuts and (2) 1/4 flat washers.



Figure 16 — Cob Pipes

29. Attach spout, Item 4, page 19, to pipe swivel, Item 5, page 19, with (2) 5/16 x 3/4 hex head cap screws and lock nuts at the pivot sides. Do not over tighten. Attach at rear hole with 5/16 x 1 hex head cap screw, flat washer and wing nut. This cap screw is used to adjust the angle of the spout. See Figure 17.

30. Attach deflector, Item 1, page 19, to spout, Item 4, page 19, with (2) 1/4 x 1/2 slotted truss head screws and flanged serrated hex nuts. See Figure 17.



Figure 17 — Cob Spout and Deflector

31. Attach assembled clutch linkage to sheller housing. See Figure 18. Items in clutch linkage include 3, 6, 7, 8, 9, 10, 13, 14, 15, 16, 17 and 18, page 15. Install spring, Item 12, page 15, between end of arm, Item 13, page 15, and lower spring bracket. See Figure 18.

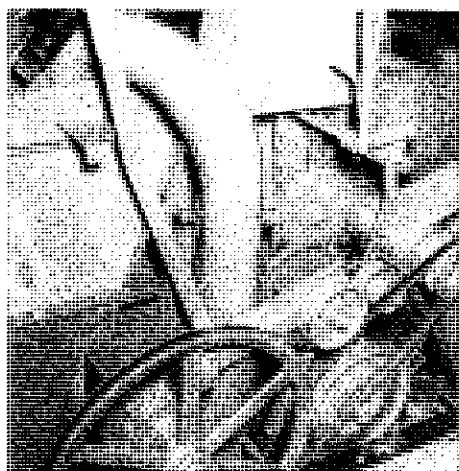


Figure 18 — Sheller Clutch
[shield removed for clarity]

32. Install large sheller pulley with tapered sleeve and hardware, Items 22, 23, 24, page 15, on to main sheller drive shaft. Use special key, Item 19, page 15, taped to shaft keyway. Use a long straight edge from the outside of the large sheller pulley to the outside of the pulley on the hammermill shaft. Align large pulley and tighten tapered sleeve. Do not over tighten or bolts will break off. Notch keyway to prevent key from slipping back. See Figure 19.

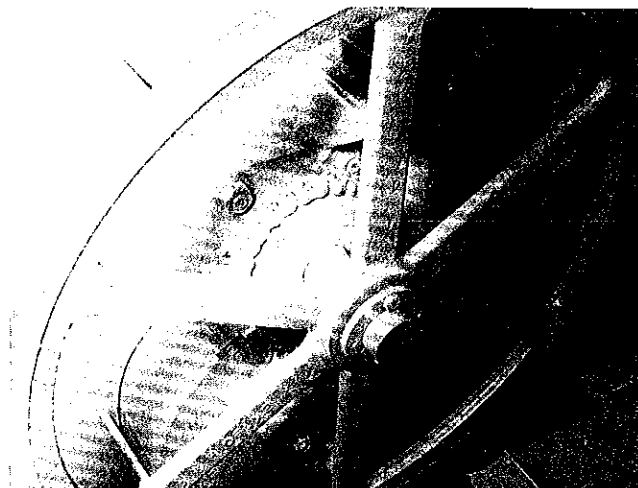


Figure 19 — Sheller Drive Pulley
[shield removed for clarity]

33. Install belt to pulleys. Adjust clutch disengage bracket, Item 2, page 15, to either side of center hole, if necessary, for more or less belt slack.

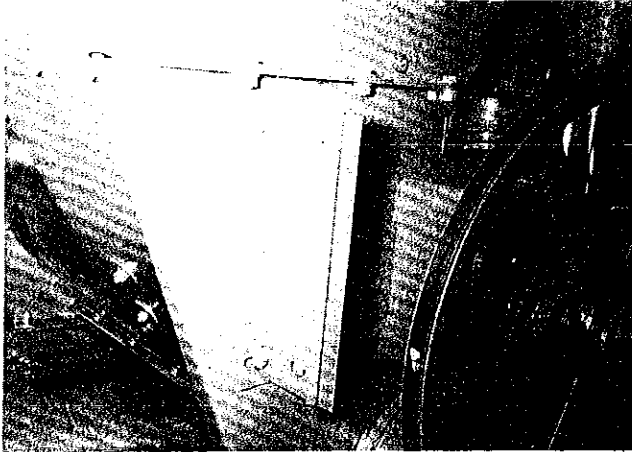
34. Add short shield and L-bracket, Items 46 and 47, page 15. Use existing hardware on sheller unit. See Figure 20.



Figure 20 — Small Shield and Bracket
[shield removed for clarity]

10 — Operation

35. Attach inside door latch bracket, Item 37, page 15, to sheller housing with 2 each 5/16 x 3/4 carriage bolt, flat washer, lock washer and hex nuts. Install bracket, Item 38, page 15, to bracket, Item 37, page 15, with 2 each 5/16 x 3/4 carriage bolt, flat washer, lock washer and hex nuts. See Figure 21.



*Figure 21 — Shield Mount Brackets
[shields removed for clarity]*

36. If main shield base plate is rubbing on lower part of sheller drive belt, loosen bolts in base plate and slide base plate away from large pulley for clearance. Reinstall front main shield replacing the side filler shield with Item 45, page 15. Use 8 each 1/4 x 1/2 slotted truss head screws and serrated flanged hex nuts.

37. Install sheller side shield, Item 42, page 15, using 5 each 1/4 x 1/2 slotted truss head screws and serrated flanged hex nuts. Adjust brackets, Items 37 and 38, page 15, with main shield in place and sheller side shield engaging brackets. See Figure 22.



Figure 22 — Sheller Side Shield and Bracket

38. Install drag drive shield over drive tower. Attach with existing hardware.

39. Install drag feeder to assembled yoke with 3/4 diameter x 10 pin which was removed in Step 1. Attach with cotter pins.

40. Slip pipe, Item 33, page 17, into pipe clamp and pipe, Items 34 and 11, page 17. Attach to lower sheller frame and drag housing with 2 each 3/8 x 2-3/4 clevis pin and 5/32 x 1-1/2 cotter pins. See Figure 23.

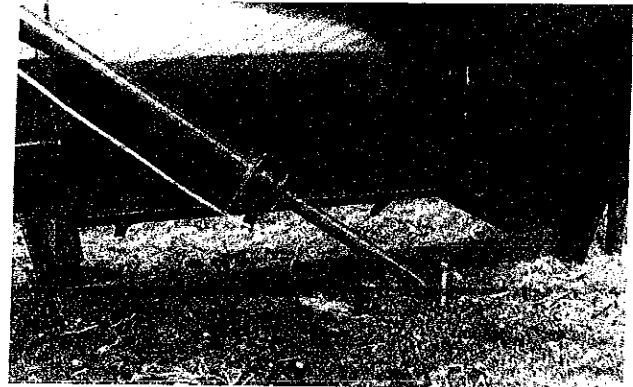


Figure 23 — Drag Feed Mounting

41. If sheller bypass attachment is to be used, the hammermill door must be replaced with a door and transition pipe, Item 39, page 17. The assembled corn sheller elbows and canvas boot, Items 40, 39 and 42, page 19, is removed and the 4 inch diameter flexible tube is installed. Curve the flex tubing around and install into the pipe on the hammermill door. See Figure 24.

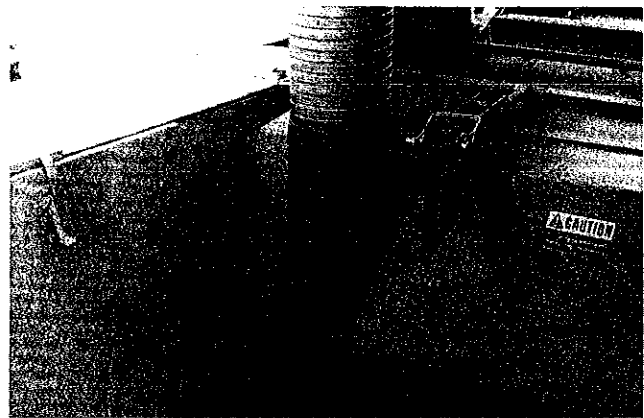


Figure 24 — Sheller Bypass Attachment

GENERAL OPERATION

Read and become familiar with information found in the Model 450 Grinder-Mixer Operator's Manual before starting to use the Corn Sheller Attachment (or latest revision).

If the Corn Sheller Attachment is not in use for a longer period of time, remove the corn sheller drive belt to increase belt life.

Inspect sheller drive belt periodically for wear.

When shelling, it is recommended to keep the sheller hopper as full as possible of ear corn. This prevents shelled corn from flying back out of the hopper.

IMPORTANT: Do not shut off machine with corn in sheller hopper, except in an emergency. Before restarting, open bottom clean out door and clean out corn from sheller housing. See Figure 25.

Use the diverter plate in the sheller hopper in the up position for shelling ear corn only. Place it down for grinding ear corn or grain directly. See Figure 26.

A sheller bypass can be installed to throw shelled corn to the back side of the mill screen so that corn can be shelled without grinding. See page 10 for installation of sheller bypass.

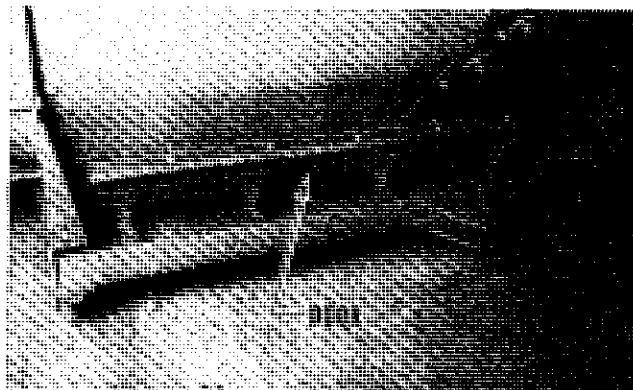


Figure 25 — Clean Out Door

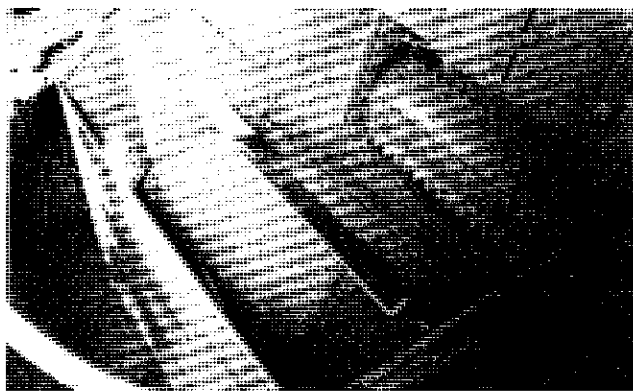


Figure 26 — Diverter Plate

ADJUSTMENTS

BLOWER BAFFLE

An adjustment baffle is provided for ear corn with different moisture contents. See Figure 27. For dry corn, loosen the nut and move to the left side of the slot. For wet corn, loosen the nut and move to the right side of the slot. Retighten nut before operating.

SHELLER DRIVE BELT

Belt tension should be checked periodically. The clutch bracket can be moved to a position so that the belt is loose when the clutch is disengaged.



Figure 27 — Shelling Adjustment

LUBRICATION



CAUTION: Do not clean, lubricate or adjust your grinder-mixer while it is running. Shut tractor engine off and disengage tractor PTO lever.

Grease front and rear bearings on main sheller shaft every 3 days or every 30 hours of operation with Arts-Way Super-Lube lubricant or an equivalent SAE multi-purpose type grease. See Figures 28 and 29.

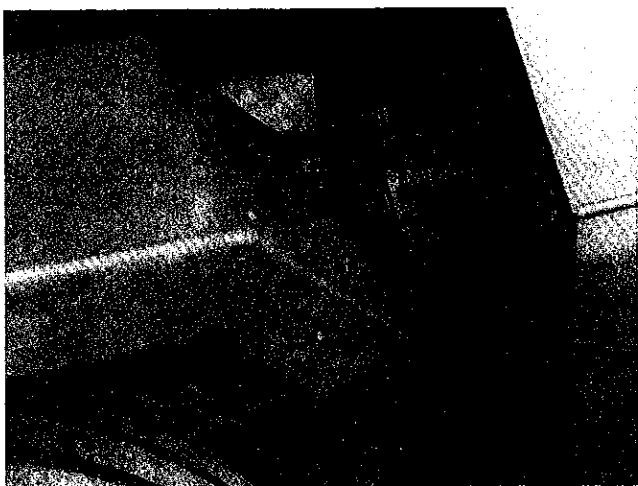
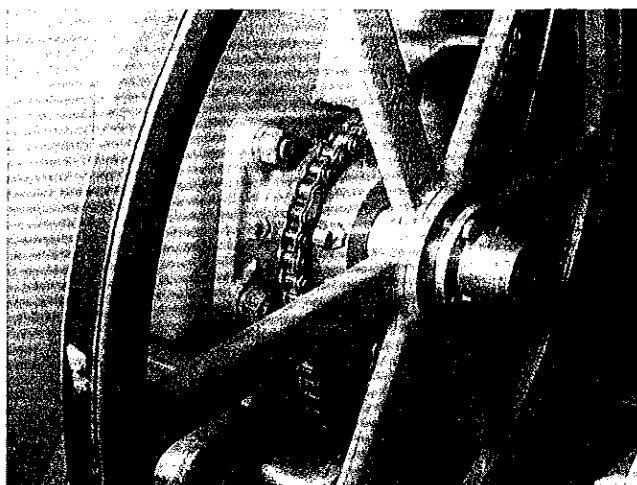
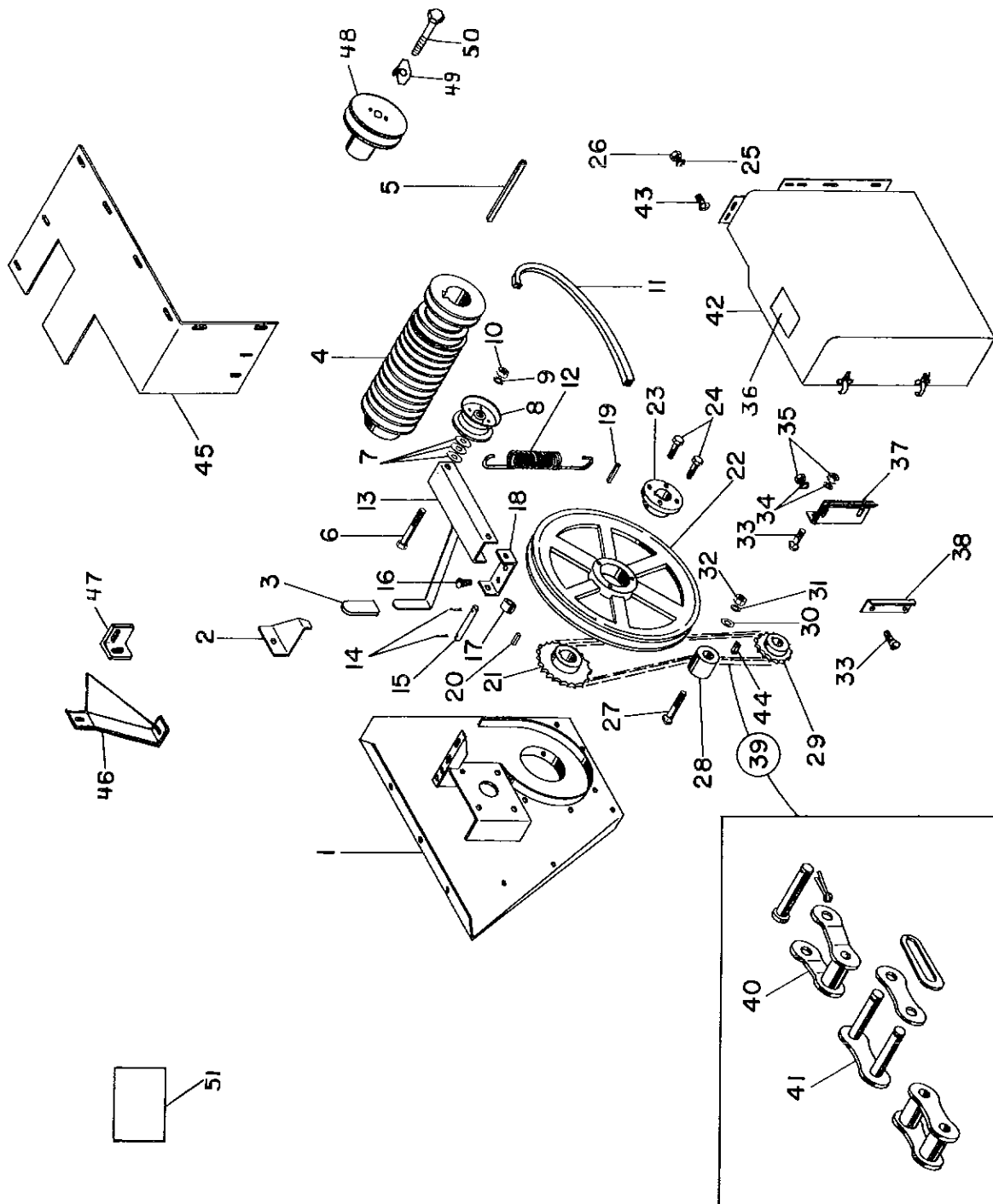


Figure 28 — Rear Cylinder Bearing



*Figure 29 — Front Cylinder Bearing
[shield removed for clarity]*

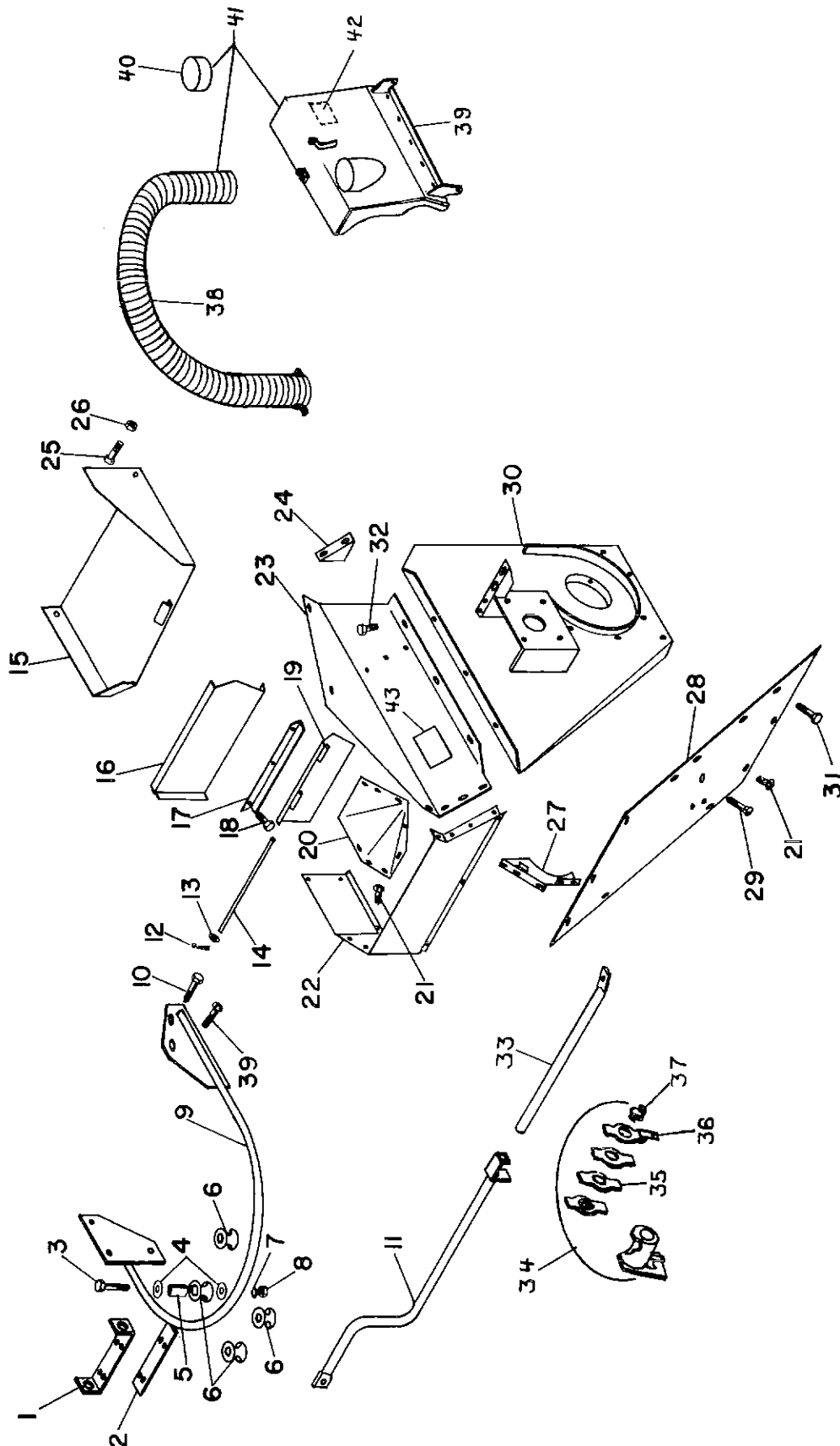
FARM UNIT CORN SHELLER DRIVE



FARM UNIT CORN SHELLER DRIVE

KEY	PART NUMBER	DESCRIPTION
1	212-02822-0	Front Head Frame
2	104-02831-0	Clutch Arm Lock Bracket
3	342-02156-0	Plastic Clutch Handle Grip
4	127-02832-0	Drive Pulley, Special Factory Installed
5	419-11039-0	Tapered Key, Factory Installed
6	303-02833-0	Hex Cap Screw 5/8 - 11 UNC x 4-1/2
7	340-02043-0	Flat Washer 5/8
8	327-02834-0	Idler Pulley, 4-1/2 O.D., 5/8 I.D.
9	340-02044-0	Lock Washer 5/8
10	322-02045-0	Hex Nut 5/8 - 11 UNC
11	302-02835-0	Belt "B-82"
12	438-01720-0	Clutch Control Hold Down Spring
13	209-02836-0	Clutch Control Bracket
14	319-02837-0	Cotter Pin 3/32" x 1"
15	123-02838-0	Clutch Control Bracket Hinge Pin, 5/8" x 4"
16	303-02017-0	Carriage Bolt 3/8 - 16 UNC x 1"
17	136-02839-0	Spacer 5/8 I.D. x 13/16" O.D. x 7/8 Long
18	104-02840-0	Hitch Bracket For Clutch Control
19	319-03756-0	Key, 7/32" x 3/8" x 1-1/4"
20	319-01370-0	Key, 3/8" x 3/8" x 1"
21	437-02841-0	Sprocket, 40B28, 1-7/16 Bore
22	327-02842-0	Large Cast Drive Pulley, Less Hub
23	305-02843-0	"H" Hub, 1-7/16" Bore
24	303-01205-0	Hex Cap Screw 1/4" - 20 UNC x 3/4"
25	340-02944-0	Lock Washer 1/4
26	322-02766-0	Hex Nut 1/4" - 20 UNC
27	303-03354-0	Carriage Bolt 3/8 - 16 UNC x 2-1/2"
28	442-02126-0	Wood Block
29	337-01081-0	Sprocket, 40B13, 1" Bore
30	303-02119-0	Flat Washer 3/8"
31	303-02118-0	Lock Washer 3/8"
32	322-02726-0	Hex Nut 3/8" - 16 UNC
33	303-01241-0	Carriage Bolt 5/16" - 18 UNC x 3/4"
34	340-02362-0	Lock Washer 5/16"
35	322-02363-0	Hex Nut 5/16" - 18" UNC
36	447-11538-0	Decal — Caution Keep Shields in Place
37	204-04347-0	Bracket, Middle Door Latch — Weld Together
38	104-02946-0	Bracket, Outside Door Latch
39	408-02845-0	Chain, Rc40, 58 P. Including Offset And Connector
40	408-01328-0	Offset Link
41	408-01329-0	Connector Link
42	233-14978-0	Sheller Side Shield Weld Assembly
43	303-02124-0	Truss Head Bolt 1/4" - 20 UNC x 1/2"
44	319-03761-0	Key, 1/4" x 1/4" x 3/4"
45	133-14532-0	End Cover — Units With Corn Sheller
46	233-14984-0	Drive Chain Shield Assembly
47	104-15409-0	Bracket, Shield Mounting
48	127-03157-0	Pulley Spec. For Field
49	140-01072-0	Special Lock Washer
50	303-03158-0	Bolt, 1/2" - 13 UNC x 2-3/4" Hex Cap Gr. 5
51	447-14503-0	Decal, Tank Weight and Measure Guide

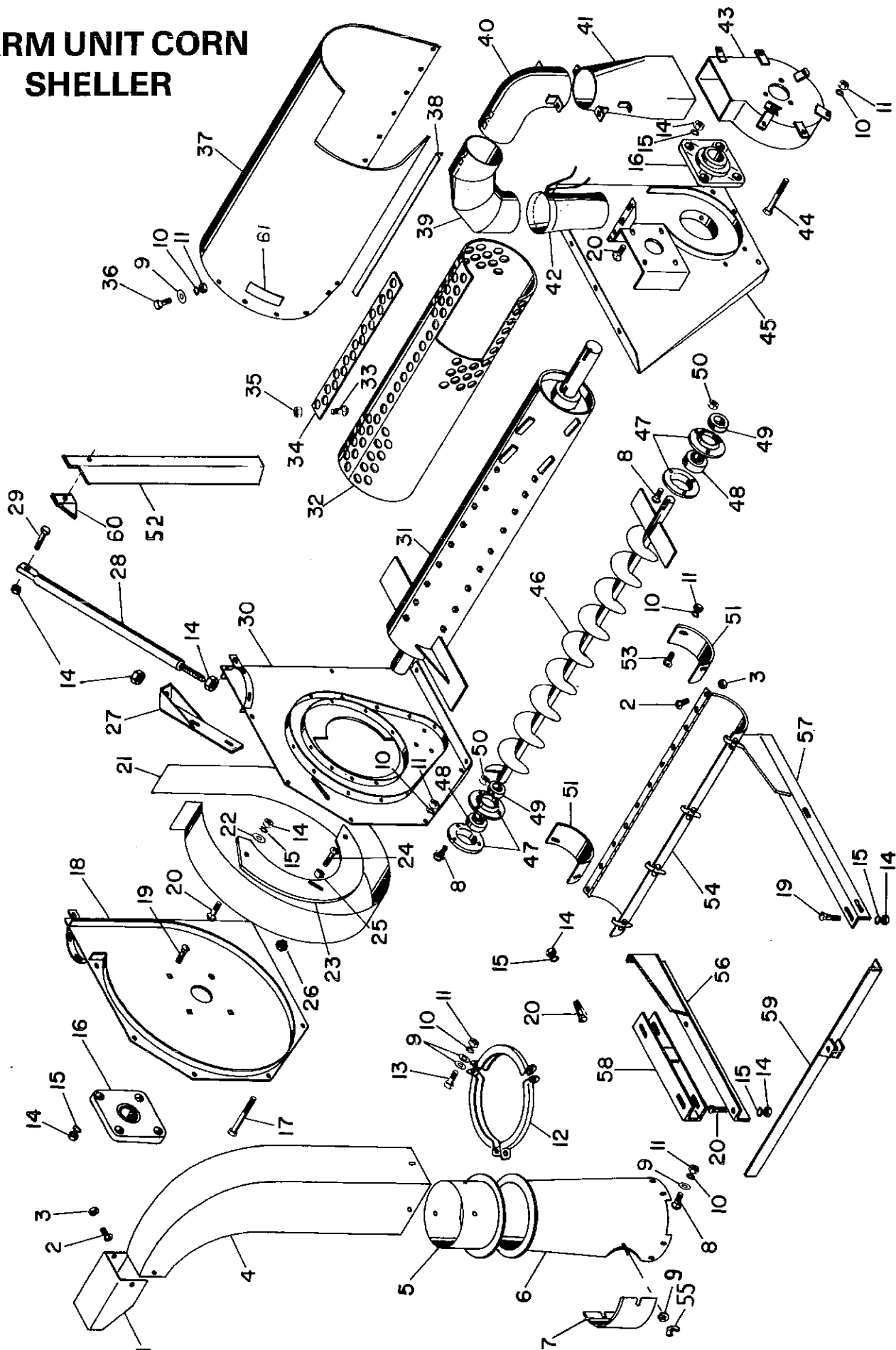
CORN SHELLER DRAG & HOPPER PARTS



CORN SHELLER DRAG & HOPPER PARTS

KEY	PART NUMBER	DESCRIPTION
1	104-02991-0	Bracket, Drag Shell Support
2	104-02992-0	Bracket, Bottom Roller Support
3	303-03763-0	Hex Cap Screw 3/8 - 16 UNC x 2-1/2"
4	340-02119-0	Flat Washer 3/8
5	105-02994-0	Bushing 3/8" I.D. x 1/2" O.D. x 1-3/8 Long
6	301-02995-0	Roller, Drag Shell Support
7	340-02118-0	Lock Washer 3/8
8	322-02726-0	Hex Nut 3/8" - 16 UNC
9	215-02996-0	Hanger, Drag Support Assembly
10	303-00669-0	Hex Cap Screw 3/8" - 16 UNC x 1-1/4
11	318-02998-0	Top Support Pipe Assembly
12	319-02837-0	Cotter Pin 3/32" x 1"
13	303-02292-0	Flat Washer 5/16"
14	129-03764-0	Hinge Rod 5/16" x 15-3/4"
15	233-03000-0	Shield, Slide Chute Assembly
16	133-03019-0	Top Back Corn Input Hopper
17	104-03020-0	Angle Support Brace
18	303-02823-0	Truss Head Bolt 5/16" - 18 UNC x 3/4
19	233-03021-0	Rubber Shield Anti-Corn Kickback
20	133-03022-0	Left Slanted Hopper Bottom
21	303-02124-0	Truss Head Bolt 1/4 - 20 UNC x 1/2
22	133-03023-0	Hopper, Top Left And Front Portion
23	233-15395-0	Hopper, Top Right Side Portion w/decal
24	104-03025-0	Brace, Corner Support
25	303-01226-0	Hex Cap Screw 3/8" - 16 UNC x 1"
26	322-02306-0	Self Locking Hex Nut, 3/8" - 16 UNC
27	104-03026-0	Brace, Left Bottom Corn Hopper
28	133-03027-0	Shield, Front Bottom of Hopper
29	303-02017-0	Carriage Bolt 3/8" - 16 UNC x 1"
30	212-02822-0	End Head Frame Front
31	303-00688-0	Hex Cap Screw 5/16 - 18 UNC x 5/8"
32	303-02123-0	Hex Cap Screw 3/8 - 16 UNC x 3/4
33	118-01415-0	Bottom Support Pipe of Jack
34	206-01414-0	Clamp for Jack [Complete With Spring And Washers]
35	340-01536-0	Washers — Set of 4 Clamps
36	240-03584-0	1 — Clamping Washers With Hole For Rope
37	338-01520-0	Spring For Clamp
38	224-03513-0	Flexible Tube Assembly
39	212-15107-0	Hammermill Door Assembly
40	212-15117-0	Tube Cap Assembly
41	220-15396-0	Sheller By-Pass Attachment
42	447-04927-0	Decal, Caution
43	447-14991-0	Decal, Shelling Instructions

FARM UNIT CORN SHELLER



FARM UNIT CORN SHELTER

KEY	PART NUMBER	DESCRIPTION
1	133-02802-0	Deflector, Cob Stacker Pipe
2	303-02124-0	Truss Head Bolt, 1/4" - 20 UNC x 1/2"
3	322-02327-0	Nut, Whiz Lock 1/4" - 20 UNC
4	224-02803-0	Cob Stacker Pipe
5	224-02804-0	Pipe Swivel Collar
6	224-02805-0	Bottom Cob Stacker Pipe
7	133-02806-0	Clean Out Door
8	303-01241-0	Carriage Bolt 5/16" - 18 UNC - 3/4"
9	303-02292-0	Flat Washer 5/16"
10	340-02362-0	Lock Washer 5/16"
11	322-02363-0	Hex Nut 5/16" - 18 UNC
12	106-01248-0	Swivel Clamp Ring [3 Required]
13	303-00590-0	Hex Cap Screw 5/16" - 18 UNC x 1"
14	322-00536-0	Hex Nut 1/2" - 13 UNC
15	340-00537-0	Lock Washer 1/2"
16	301-00862-0	Bearing, 1-7/16", Flange Block
17	303-02807-0	Hex Cap Screw 5/16" - 18 UNC x 6"
18	212-02808-0	Head Frame, Back
19	303-03047-0	Carriage Bolt 1/2" - 13 UNC - 1-1/4"
20	303-04110-0	Carriage Bolt 1/2" - 13 UNC - 1-1/2"
21	116-02809-0	Cob Thrower Housing Band
22	240-00520-0	Flat Washer 1/2"
23	112-02810-0	Cob Retard Plate
24	303-03757-0	Truss Head Bolt 3/8" - 16 UNC x 1"
25	136-03346-0	Bushing, 3/8" I.D. x 9/16" O.D. x 9/32" Long
26	322-02726-0	Hex Nut 3/8" - 16 UNC
27	215-02811-0	Support Pipe Hanger Bracket
28	229-02812-0	Support Rod 19-1/2 Pipe + 5" Thread Rod
29	303-01477-0	Hex Cap Screw 1/2" - 13 UNC x 1-1/2"
30	212-02813-0	Middle Divider Frame
31	232-02814-0	Main Cylinder and Shaft Assembly
32	116-02815-0	Screen Housing, Shelling Chamber
33	303-03284-0	Carriage Bolt 3/8" - 16 UNC x 3/4"
34	139-03758-0	Support Strap For Screen Housing
35	322-02018-0	Nut, Whiz Lock 3/8" - 16 UNC
36	303-00688-0	Hex Cap Screw 5/16" - 18 UNC x 5/8"
37	216-02816-0	Main Sheller Housing Shell
38	104-02830-0	Clean Out Door Lock Bracket
39	224-01278-0	Elbow, 4" For Corn Thrower Pipe
40	224-02817-0	Heavy Elbow For Corn Thrower Pipe
41	224-02818-0	Corn Thrower Pipe, Base Section
42	207-03624-0	Canvas Boot
43	216-02819-0	Corn Thrower Fan Housing
44	303-02820-0	Hex Cap Screw 5/16" - 18 UNC x 4-1/2"
45	212-02822-0	Head Frame, Front
46	245-02821-0	Corn Conveying Auger
47	101-01233-0	Flange For 1" Bearing, 3 Hole
48	301-01231-0	Bearing, 1" Bore
49	101-01230-0	Lock Collar For 1" Bearing
50	322-02019-0	Nut, Whiz Lock 5/16" - 18 UNC
51	104-02824-0	Left or Right Corn Auger Housing Bracket
52	112-02149-0	Tank, Brace Welds to Machine
53	303-02823-0	Truss Head Bolt, 5/16" - 18 UNC x 3/4"
54	216-02826-0	Corn Auger Clean Out Door
55	322-00979-0	Wing Nut 5/16 - 18
56	112-02827-0	Rear, Bottom Frame Angle
57	112-02828-0	Front, Bottom Frame Angle
58	236-03760-0	Rear Frame Spacer
59	212-02829-0	Side, Bottom Frame Angle
60	104-13156-0	Backing Bracket Tank Brace Reinforcement
61	447-14992-0	Decal, Sheller Adjustment

Notes

NUMERICAL PARTS INDEX:

PART NUMBER-KEY-PAGE

240-00520-0	22	20
322-00536-0	14	20
340-00537-0	15	20
303-00590-0	13	20
303-00669-0	10	18
303-00688-0	31	18
303-00688-0	36	20
301-00862-0	16	20
322-00979-0	55	20
140-01072-0	49	16
337-01081-0	29	16
303-01205-0	24	16
303-01226-0	25	18
101-01230-0	49	20
301-01231-0	48	20
101-01233-0	47	20
303-01241-0	33	16
303-01241-0	8	20
106-01248-0	12	20
224-01278-0	39	20
303-01311-0	20	20
408-01328-0	40	16
408-01329-0	41	16
319-01370-0	20	16
206-01414-0	34	18
118-01415-0	33	18
303-01477-0	29	20
338-01520-0	37	18
340-01536-0	35	18
438-01720-0	12	16
303-02017-0	16	16
303-02017-0	29	18
322-02018-0	35	20
322-02019-0	50	20
340-02043-0	7	16
340-02044-0	9	16
322-02045-0	10	16
303-02118-0	31	16
340-02118-0	7	18
303-02119-0	30	16
340-02119-0	4	18
303-02123-0	32	18
303-02124-0	43	16
303-02124-0	21	18
303-02124-0	2	20
442-02126-0	28	16
112-02149-0	52	20
342-02156-0	3	16
303-02292-0	13	18
303-02292-0	9	20
322-02306-0	26	18
322-02327-0	3	20
340-02362-0	34	16
340-02362-0	10	20
322-02363-0	35	16
322-02363-0	11	20

PART NUMBER-KEY-PAGE

322-02726-0	32	16
322-02726-0	8	18
322-02726-0	26	20
322-02766-0	26	16
133-02802-0	1	20
224-02803-0	4	20
224-02804-0	5	20
224-02805-0	6	20
133-02806-0	7	20
303-02807-0	17	20
212-02808-0	18	20
116-02809-0	21	20
112-02810-0	23	20
215-02811-0	27	20
229-02812-0	28	20
212-02813-0	30	20
232-02814-0	31	20
116-02815-0	32	20
216-02816-0	37	20
224-02817-0	40	20
224-02818-0	41	20
216-02819-0	43	20
303-02820-0	44	20
245-02821-0	46	20
212-02822-0	1	16
212-02822-0	30	18
212-02822-0	45	20
303-02823-0	18	18
303-02823-0	53	20
104-02824-0	51	20
216-02826-0	54	20
112-02827-0	56	20
112-02828-0	57	20
212-02829-0	59	20
104-02830-0	38	20
104-02831-0	2	16
127-02832-0	4	16
303-02833-0	6	16
327-02834-0	8	16
302-02835-0	11	16
209-02836-0	13	16
319-02837-0	14	16
319-02837-0	12	18
123-02838-0	15	16
136-02839-0	17	16
104-02840-0	18	16
437-02841-0	21	16
327-02842-0	22	16
305-02843-0	23	16
408-02845-0	39	16
340-02944-0	25	16
104-02946-0	38	16
104-02991-0	1	18
104-02992-0	2	18
105-02994-0	5	18
301-02995-0	6	18

PART NUMBER-KEY-PAGE

215-02996-0	9	18
318-02998-0	11	18
233-03000-0	15	18
133-03019-0	16	18
104-03020-0	17	18
233-03021-0	19	18
133-03022-0	20	18
133-03023-0	22	18
104-03025-0	24	18
104-03026-0	27	18
133-03027-0	28	18
303-03047-0	19	20
127-03157-0	48	16
303-03158-0	50	16
303-03284-0	33	20
136-03346-0	25	20
303-03354-0	27	16
224-03513-0	38	18
240-03584-0	36	18
207-03624-0	42	20
319-03756-0	19	16
303-03757-0	24	20
139-03758-0	34	20
236-03760-0	58	20
319-03761-0	44	16
303-03763-0	3	18
129-03764-0	14	18
204-04347-0	37	16
447-04927-0	42	18
419-11039-0	5	16
447-11538-0	36	16
104-13156-0	60	20
447-14503-0	51	16
133-14532-0	45	16
233-14978-0	42	16
233-14984-0	46	16
447-14991-0	43	18
447-14992-0	61	20
212-15107-0	39	18
212-15117-0	40	18
233-15395-0	23	18
220-15396-0	41	18
104-15409-0	47	16

