



**ARTS-WAY**

**PARTS MANUAL**

for

**320 & 420**

models of the

**PORTABLE**

**MIXER & MILL**



**ARTS-WAY**

Manufacturing Company / Armstrong, Iowa / Phone (712) 864-3131

152040

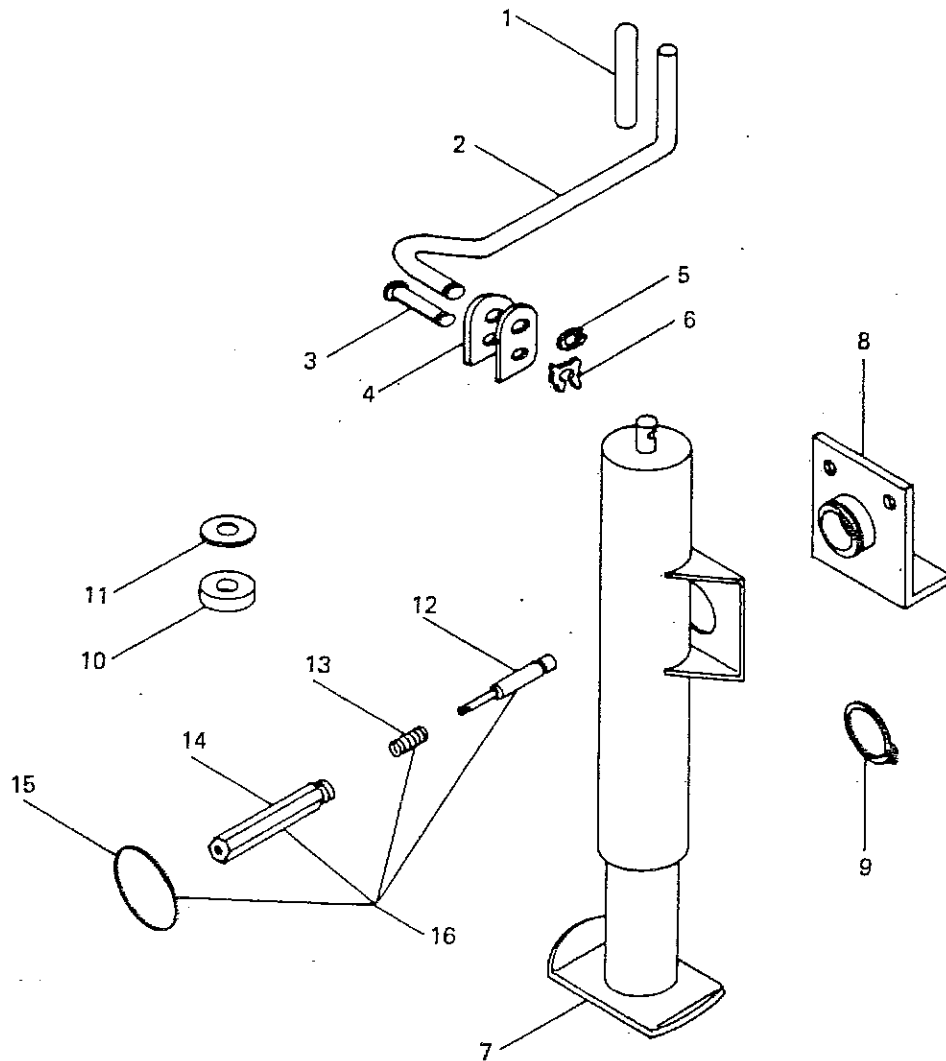


TABLE OF CONTENTS  
FOR MODELS 320 AND 420  
COVERING YEARS 1967, 1968, AND 1969

JACK ASSEMBLY -----	1
POWER SHAFT ASSEMBLIES -----	2 - 3
FRAME AND DRIVE ASSEMBLY -----	4 - 5
HAMMER MILL HOUSING AND PARTS -----	6 - 7
HAMMER MILL MAIN SHAFT UNIT -----	8 - 9
INTAKE AUGER AND PARTS -----	10 - 11
BELT DRIVE - 540 R.P.M. -----	12 - 13
BELT DRIVE - 1000 R.P.M. -----	14 - 15
MILL DUST COLLECTOR ASSEMBLY -----	16
GOVERNOR UNIT -----	17
BOTTOM DRAG DRIVE -----	18 - 19
TOP DRAG DRIVE -----	20 - 21
ROLL FEED -----	22 - 23
MECHANICAL AUGER FEEDER -----	24 - 25
HYDRAULIC DRIVE AUGER FEEDER -----	26 - 27
SUPPLEMENT HOPPER -----	28 - 29
GEAR BOX ASSEMBLY -----	30 - 31
TANK AND MIXING AUGER -----	32 - 33
FIRST SECTION BACK AUGER -----	34 - 35
DISCHARGE AUGER, TOP UNIT -----	36 - 37
MAIN DRIVE SHIELDS -----	38 - 39
PAINT, GREASE AND DECALS -----	40

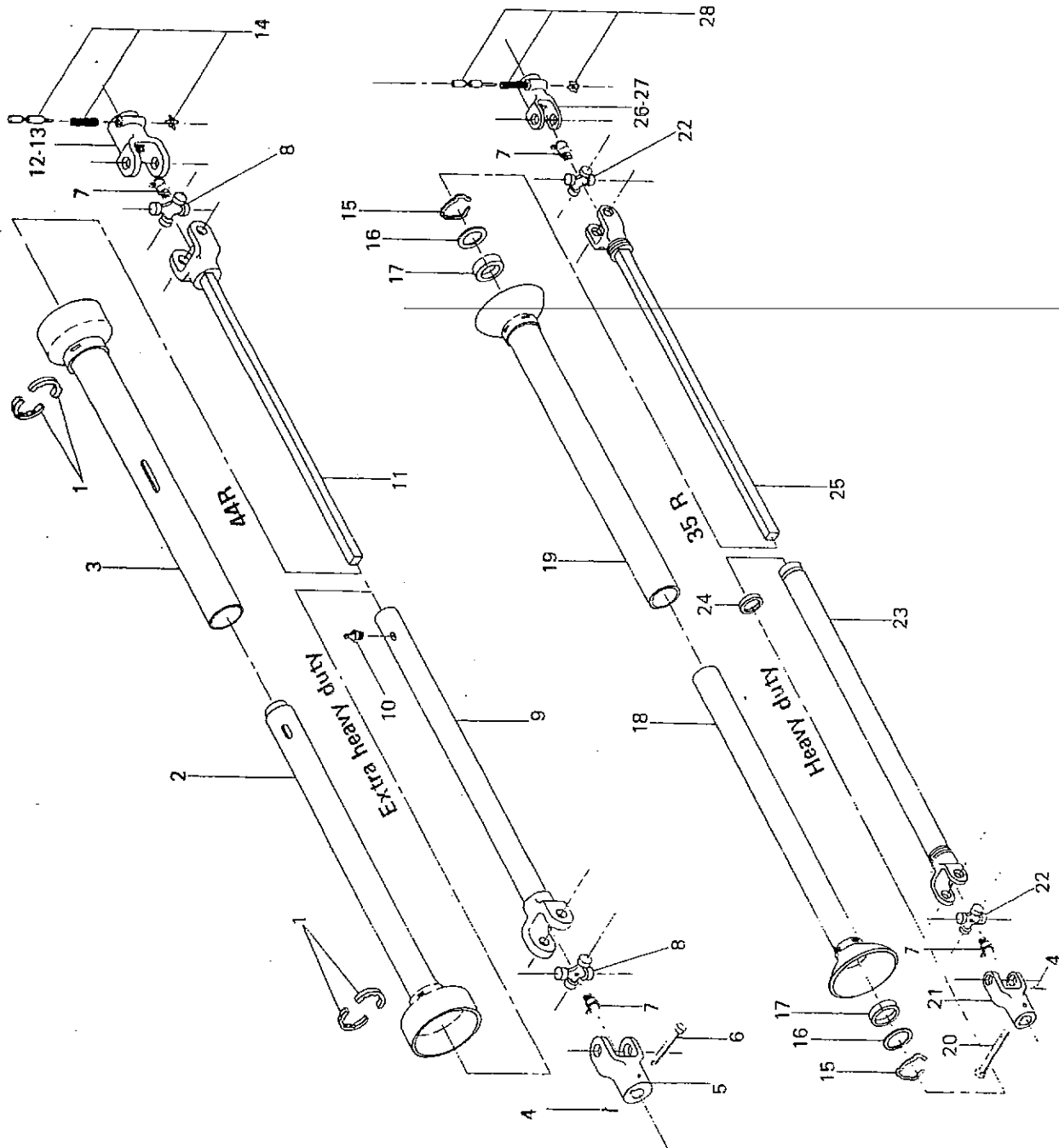
MEMORANDA

# JACK ASSEMBLY



KEY	PART NUMBER	DESCRIPTION
1	42-2064	Plastic Grip
2	09-1869	Handle For Swivel Jack
3	23-2015	Crank Handle Pin
4	04-2016	Sleeve, Jack Crank Handle
5	40-2014	"C" Washer-Holds Jack Crank
6	40-2013	"X" Washer-Holds Crank Pin
7	18-1037	Jack; Complete Assembly
8	04-1670	Jack Bracket-Welds To Frame
9	35-1038	Snap Ring-Heavy Duty
10	01-1040	Jack Thrust Bearing
11	40-3516	Thrust Bearing Washer
12	23-1859	Lock Pin Plunger
13	38-1860	Lock Pin Plunger Spring
14	16-1858	Lock Pin Housing
15	35-1857	Ring For Lock Pin
16	23-1039	Lock Pin Assembly

# POWER SHAFT ASSEMBLIES



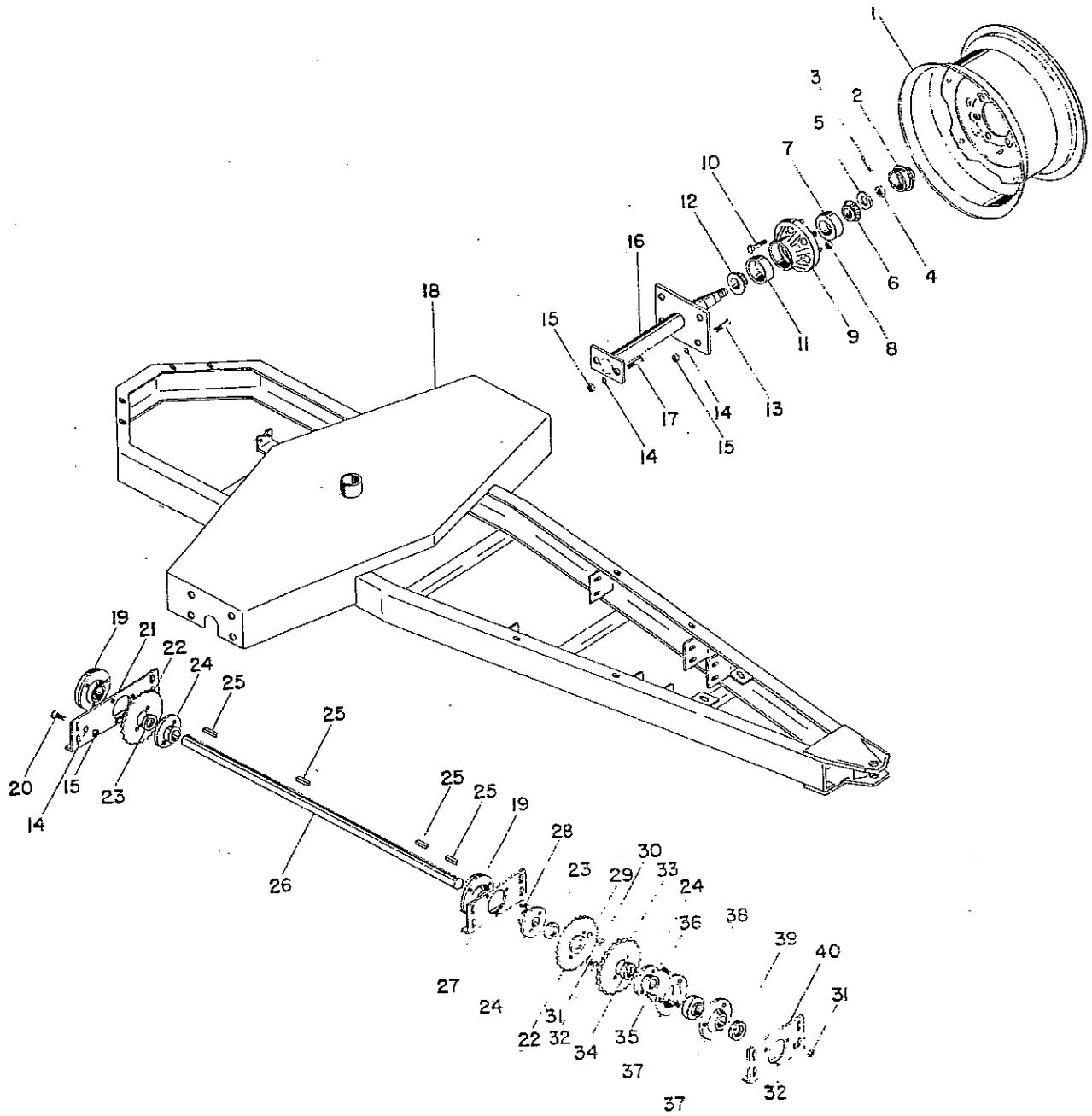
POWER SHAFT ASSEMBLIES

EXTRA HEAVY DUTY 44R (43" Closed Length)		
KEY	PART NUMBER	DESCRIPTION
	26-2863	Complete Heavy Duty Power Shaft, 1 1/2" Implement End, 540 RPM
	26-2864	Complete Heavy Duty Power Shaft, 1 1/2" Implement End, 1 1/2" 21 Spline, Tractor End, 1000 RPM
	26-2866	1/2 Heavy Duty PTO, 1 1/2" 6 Spline Tractor End 540 RPM
	26-2867	1/2 Heavy Duty PTO, 1 1/2" Implement End
	26-2868	1/2 Heavy Duty PTO, 1 1/2" 21 Spline Tractor End, 1000 RPM
1	01-3280	Nylon Shield Support Bearing (Two Pieces)
2	33-3281	Inner Shield And Bell
3	33-3282	Outer Shield and Bell
4	19-2070	Cotter Key, 3/32" x 1"
5	26-2874	Implement Yoke, 1 1/2" Bore
6	23-2136	Clevis Pin, 3/8" x 3 1/2"
7	24-3517	Grease Fitting, 65°, 1/4" Pipe Thread
8	20-2875	Center Cross Repair Kit for 44R Series
9	26-2871	Yoke, Tube & Sleeve Assembly, Impl. End
10	42-1317	Grease Fitting, Straight, 1/4" Pipe Thread
11	26-2877	Yoke & Shaft, 1 1/2" Square, Hardened
12	26-2878	Q.D. Tractor Yoke Assembly, 1 1/2", 6 Spline 540 RPM
13	26-2879	Q.D. Tractor Yoke Assembly, 1 1/2", 21 Spline 1000 RPM
14	26-2134	Lock Pin, Spring and Lock Assembly for 1000 RPM or 540 RPM

HEAVY DUTY POWER SHAFT 35R (43" Closed Length)		
KEY	PART NUMBER	DESCRIPTION
	26-2854	Complete 35R Power Shaft, 1 1/2" Implement End 540 RPM
	26-2855	1/2 PTO, 1 1/2" Implement End
	26-2856	1/2 PTO, 1 1/2" 6 Spline Tractor End, 540 RPM
	26-2857	Complete 35R Power Shaft with 1 1/2", 21 Spline, Tractor End, 1000 RPM.
	26-2858	1/2 PTO, 1 1/2", 21 Spline Tractor End 1000 RPM
4	19-2070	Cotter Key, 3/32" x 1"
7	24-3517	Grease Fitting, 65°, 1/4" Pipe Thread
15	35-1032	Snap Ring for Shield
16	40-1035	Thrust Washer
17	01-1020	Nylon Bearing, Large
18	33-2862	Inner Shield and Bell
19	33-2860	Outer Shield and Bell
20	23-1036	Clevis Pin, 3/8" x 3"
21	26-1034	Implement Yoke, 1 1/2" Bore
22	20-1024	Center Cross Repair Kit for 35R Series
23	26-2861	Yoke, Tube and Sleeve Assembly, Implement End
24	01-1033	Nylon Bearing, Small
25	26-2859	Yoke and Shaft, Hardened
26	26-1029	Q.D. Tractor Yoke Assembly, 1 1/2", 6 Spline, 540 RPM
27	26-1031	Q.D. Tractor Yoke Assembly, 1 1/2", 21 Spline, 1000 RPM
28	26-1030	Lock Pin, Spring and Lock Assembly for 540 RPM only
	26-2134	Lock Pin, Spring and Lock Assembly for 1000 RPM only

*Yellow*

# FRAME & DRIVE ASSEMBLY



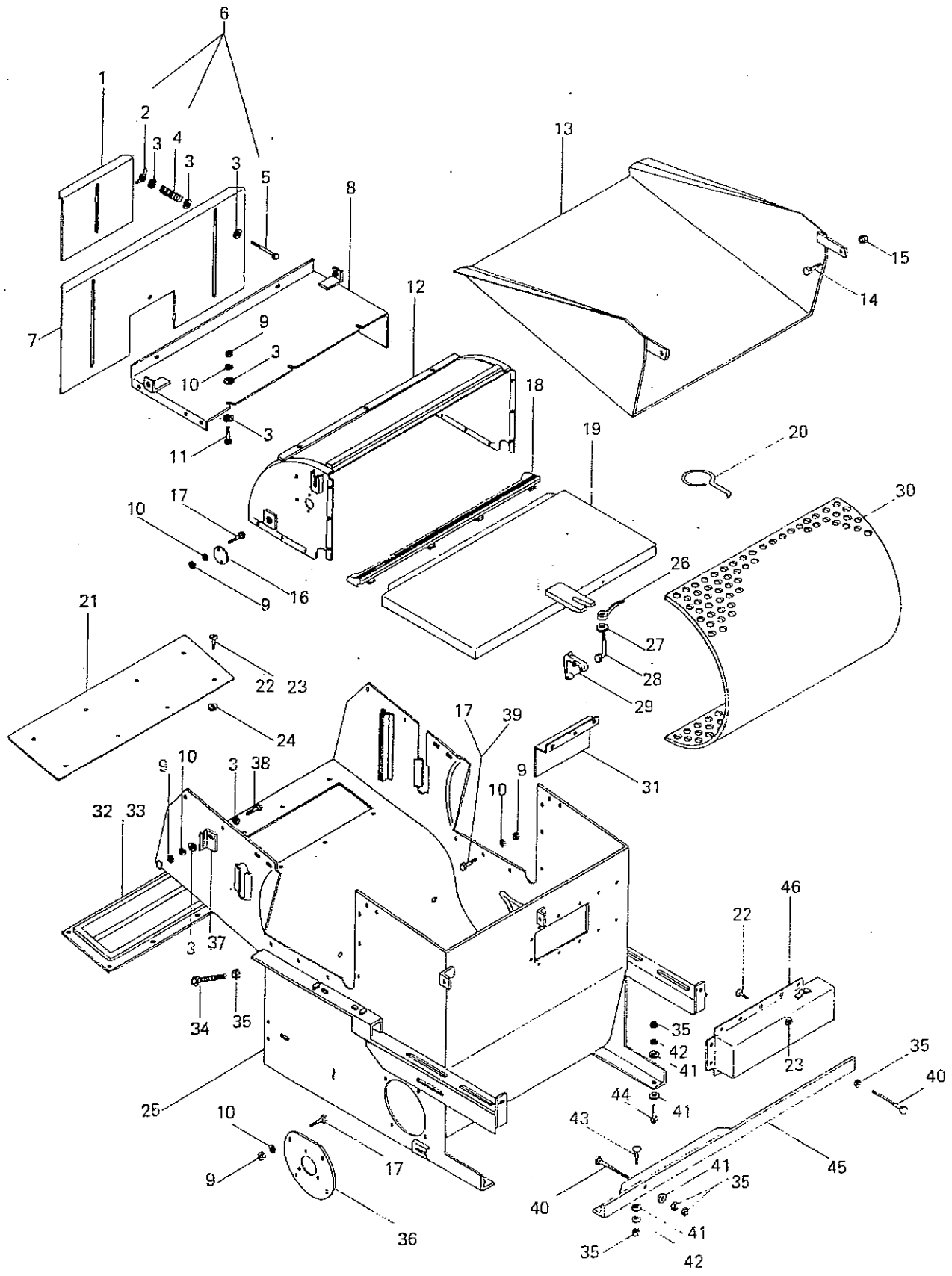


FRAME & DRIVE ASSEMBLY

KEY	PART NUMBER	DESCRIPTION
1	41-1659	Heavy Duty, 2500 Lb. Cap, 14 x 6, 6 Bolt Wheel
	41-1655	Heavy Duty, 2500 Lb. Cap, 15 x 6, 6 Bolt Wheel
	41-1871	Heavy Duty, 3500 Lb. Cap, 15 x 8, 6 Bolt Wheel
2	41-3542	Hub Cap For 6 Bolt Hub
3	19-2663	Cotter Pin, 5/32" x 1 1/2"
4	22-2071	Nut, 3/4", Hex Slotted
5	40-2072	Spindle Washer
6	01-1263	Wheel Bearing, Outer
7	01-1886	Outer Race For 01-1263 Bearing
8	22-2073	Nut For Hub Stud
9	41-1653	6 Bolt Hub
10	22-2074	Stud For 6 Bolt Hub
11	01-1885	Inner Race For 01-1652 Bearing
12	01-1652	Inner Bearing And Seal
13	03-1073	Bolt, 1/2" x 1 1/4", Hex Cap
14	40-0537	Washer, 1/2", Lock
15	22-0536	Nut, 1/2", Hex
16	32-2000	Spindle With Mounting Brackets
17	03-1477	Bolt, 1/2" x 1 1/2", Hex Cap
18	12-2012	Welded Frame Assembly
19	01-2001	Bearing, Lock Collar And Flanges, Complete 1 1/4" Unit
20	03-0539	Bolt, 1/2" x 1", Short Shoulder Carriage
21	12-2002	Rear Bearing Plate, 19" Long
22	37-3369*	Sprocket, 40A28, 1 1/2" Bore With Washer Welded On One Side
23	05-3370	Bushing, 1 1/4" I.D. x 1 1/2" O.D. x 1/4" Long
24	10-2008	Shear Hub, 1 1/4" Bore
25	19-2040	Key, 5/16" x 5/16" x 2"
26	32-2003	Shaft, 1 1/4" x 55"
27	12-2004	Center Bearing Plate, 12 1/2" Long
28	03-1205	Bolt, 1/4" x 3/4", Hex Cap
29	40-2944	Washer, 1/4", Lock
30	22-2766	Nut, 1/4", Hex
31	22-2726	Nut, 3/8", Hex
32	03-2118	Washer, 3/8", Lock
33	37-2176	Sprocket, 60A25, 1 1/2" Bore With Washer Welded On One Side
34	05-2007	Bushing, 1 1/4" I.D. x 1 1/2" O.D. x 1/2" Long
35	03-1226	Bolt, 3/8" x 1", Hex Cap
36	03-2017	Bolt, 3/8" x 1", Carriage
37	01-1915	Flange, 3 Hole, 10 Gage
38	01-2009 151250	Bearing, 1 1/4"
39	01-2010	Lock Collar For 1 1/4" Bearing
40	12-2011	Front Bearing Plate, 10 7/8" Long

\* Early 320 And 420 Machines Were Equipped With 40B28 Sprockets Replace With 40A28 Sprockets, Bushings And Shear Hubs.

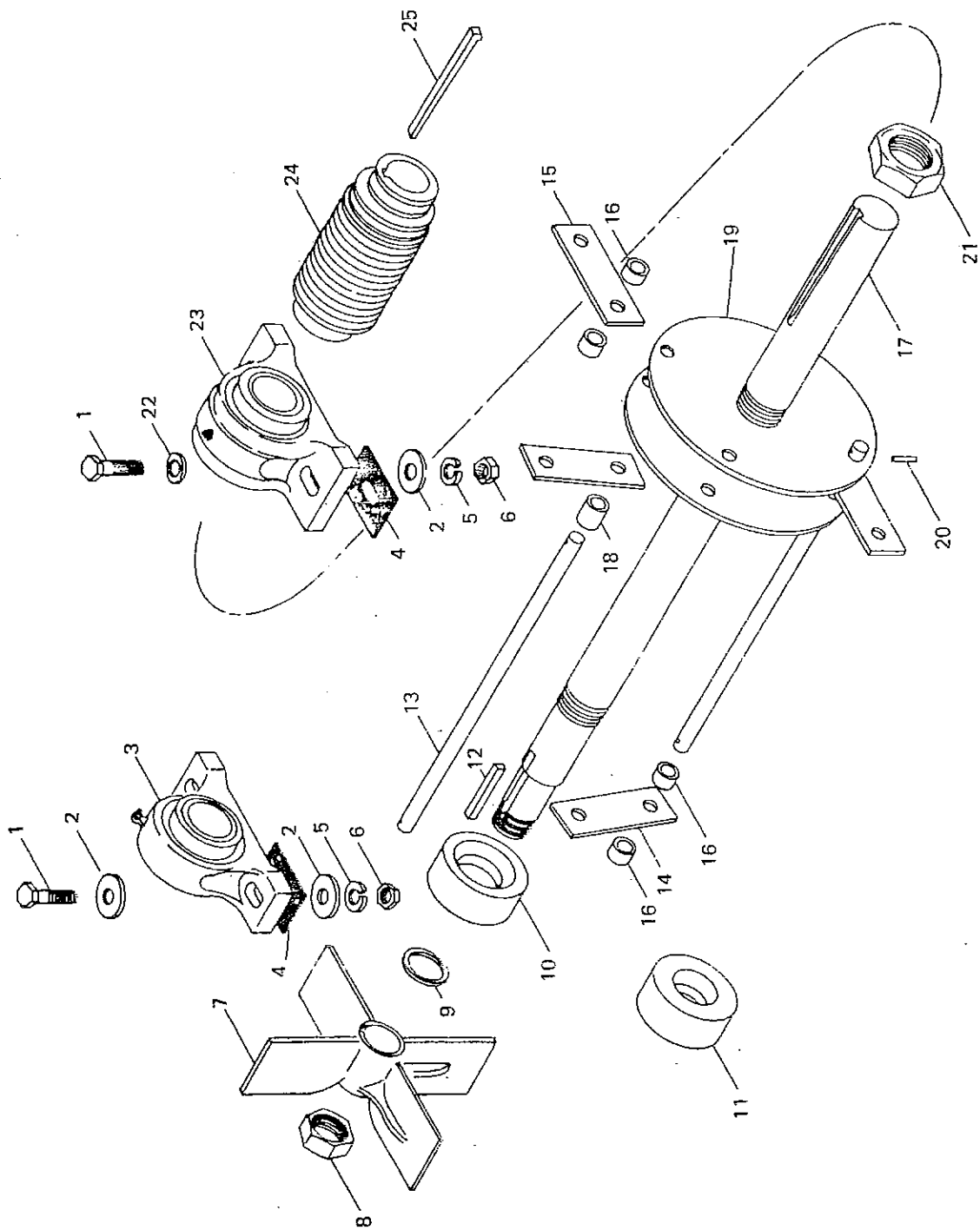
# HAMMER MILL HOUSING & PARTS



## HAMMER MILL HOUSING & PARTS

KEY	PART NUMBER	DESCRIPTION
1	12-1307	Small Feed Control Gate
2	22-0979	Wing Nut, $\frac{3}{16}$ " , Plated
3	03-2292	Washer, $\frac{3}{16}$ " Flat, Plated
4	38-1308	Compression Spring
5	03-0980	Bolt, $\frac{3}{16}$ " x $2\frac{1}{2}$ " , Hex Cap, Plated
6	25-0981	Bolt, Wing Nut & Spring
7	12-1309	Large Feed Control Gate
8	16-0982	Cover, Throat
9	22-2363	Nut, $\frac{3}{16}$ " Hex, Plated
10	40-2362	Washer, $\frac{3}{16}$ " Lock, Plated
11	03-2680	Bolt, $\frac{3}{16}$ " x $\frac{3}{8}$ " , Hex Cap, Plated
12	12-1291	Curved Mill Top
13	33-1313	Folding Mill Hopper
14	03-2242	Bolt, $\frac{3}{8}$ " x $\frac{3}{4}$ " , Hex Cap, Plated
15	22-2306	Nut, $\frac{3}{8}$ " Hex, Self Locking, Plated
16	12-1292	Plate, Hammer Rod Removal
17	03-1214	Bolt, $\frac{3}{16}$ " x $\frac{3}{4}$ " , Hex Cap, Plated
18	04-1305	Screen Bar A-43
19	12-1306	Hammer Mill Lid
20	42-1312	Screen Hook
21	33-0977	Plate To Cover Magnet Hole
22	03-2124	Bolt, $\frac{1}{4}$ " x $\frac{1}{2}$ " , Truss Head, Plated
23	03-3523	Bolt, $\frac{1}{4}$ " x $\frac{3}{4}$ " , Truss Head, Plated (Use With Magnets No. 20-0974 & No. 20-0972)
24	22-2327	Nut, $\frac{1}{2}$ " Whiz Lock, Plated
25	16-0975	Main Hammer Mill Housing
26	03-1310	$\frac{3}{16}$ " Handle Nut
27	40-2398	Washer, $\frac{3}{16}$ " Flat, Plated
28	03-1311	Bolt, $\frac{3}{16}$ " x 4" , With 90° Bend
29	04-1304	Screen Bar Holder
30	42-1550	$\frac{3}{32}$ " Screen
	42-1551	$\frac{1}{8}$ " Screen
	42-1552	$\frac{5}{32}$ " Screen
	42-1553	$\frac{3}{16}$ " Screen
	42-1554	$\frac{1}{4}$ " Screen
	42-1555	$\frac{5}{16}$ " Screen
	42-1556	$\frac{3}{8}$ " Screen
	42-1557	$\frac{7}{16}$ " Screen
	42-1558	$\frac{1}{2}$ " Screen
	42-1559	$\frac{5}{8}$ " Screen
	42-1560	$\frac{3}{4}$ " Screen
	42-1561	$\frac{7}{8}$ " Screen
	42-1562	1 " Screen
	42-1563	1 $\frac{1}{2}$ " Screen
	42-1564	1 $\frac{1}{2}$ " Screen
	42-1565	2 " Screen
31	16-0978	Baffle In Mill
32	20-0974	Magnet, 18" , No. 4
33	20-0972	Magnet, 18" , No. 2
34	03-3465	Bolt, $\frac{1}{2}$ " x $3\frac{1}{2}$ " , Hex Cap, Full Length Threads
35	22-0536	Nut, $\frac{1}{2}$ " Hex, Plated
36	04-3538	Bearing Holder & Auger Removal Plate
37	04-3539	Mounting Bracket For Top Drag Drive Shield
38	03-0590	Bolt, $\frac{3}{16}$ " x 1" , Hex Cap, Plated
39	03-3003	Bolt, $\frac{3}{16}$ " x $1\frac{1}{4}$ " , Hex Cap, Plated (Use With Screen Bar Holder No. 04-1304)
40	03-1380	Bolt, $\frac{1}{2}$ " x 5" , Hex Cap, Plated
41	40-0520	Washer, $\frac{1}{2}$ " Flat, Plated
42	40-0537	Washer, $\frac{1}{2}$ " Lock, Plated
43	03-1811	Bolt, $\frac{1}{2}$ " x $1\frac{1}{2}$ " , Carriage, Plated
44	03-1477	Bolt, $\frac{1}{2}$ " x $1\frac{1}{2}$ " , Hex Cap
45	04-3395	Belt Tightener Angle
46	16-1290	Blower Box, Bolts To Mill

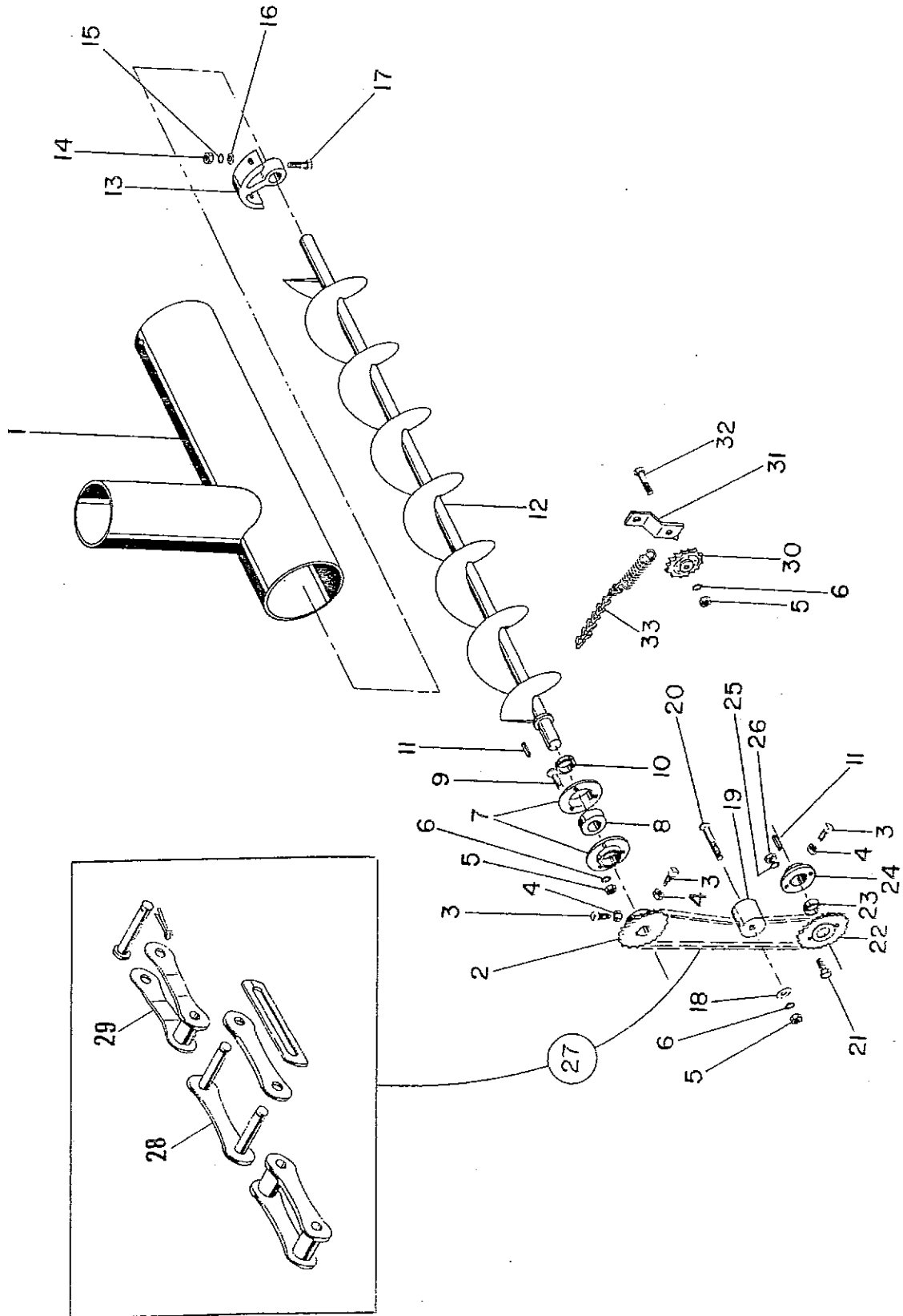
# HAMMER MILL MAIN SHAFT UNIT



# HAMMER MILL MAIN SHAFT UNIT

KEY	PART NUMBER	DESCRIPTION
1	03-1343	Bolt, $\frac{1}{2}$ " x 2 $\frac{1}{4}$ ", H.T., Plated
2	40-2043	Washer, $\frac{1}{2}$ " I.D. x 1 $\frac{1}{2}$ " O.D., Plated
3	01-1342	Bearing, 2" Pillow Block
4	13-3515	Gasket, Seating
5	40-2044	Washer, $\frac{3}{8}$ " Lock, Heavy, Plated
6	22-2045	Nut, $\frac{1}{2}$ " Hex, Plated
7	42-1352	Fan, Blower
8	22-1353	Nut, 1 $\frac{1}{2}$ " Hex
9	40-2056	Washer, 1 $\frac{1}{2}$ " I.D. x 2" O.D. x 10 Gage
10	36-2046	Spacer, Cast (7 Used) (Not Sold Separately-Order 25-2057)
11	36-2047	Spacer, Cast (2 Used) (Not Sold Separately-Order 25-2057)
12	19-1351	Key, $\frac{3}{8}$ " x $\frac{3}{8}$ " x 1 $\frac{1}{4}$ "
13	29-1347	Rod, $\frac{3}{4}$ " x 18", Hardened (4 Used)
14	11-1350	Hammers, Set Of 36 (Balanced)
15	11-1397	Hammers, Set Of 2 (Balanced)
16	36-1348	Spacers, $\frac{3}{4}$ " Pipe x $\frac{5}{8}$ " Long (36 Used)
17	32-1354	Shaft, 2 $\frac{1}{4}$ ", Machined (Not Sold Separately)
18	36-1349	Spacers, $\frac{3}{4}$ " Pipe x 1 $\frac{1}{4}$ " Long (18 Used)
19	36-0908	Rotor Plates (10 Used)
20	23-1346	Expan Pin, $\frac{1}{4}$ " x 1 $\frac{1}{4}$ " (8 Used)
21	22-1344	Special 2 $\frac{1}{4}$ " Hex Nut (Not Sold Separately)
22	40-3521	Washer, $\frac{3}{8}$ " I.D. x 1 $\frac{1}{8}$ " O.D., Plated
23	01-1395	Special 2", Heavy Duty, Long Life, Spherical Bearing
24	27-1340	Pulley, 14 Groove
25	19-1341	Gib Head Key
26	25-2057	Shaft, Rotor Plates, Cast Spacers, And 2 $\frac{1}{4}$ " Nuts-Sold Assembled In Balanced Unit Only. Consists Of Parts Numbers... 32-1354, 36-0908, 36-2046, 36-2047, and 22-1344

# INTAKE AUGER & PARTS

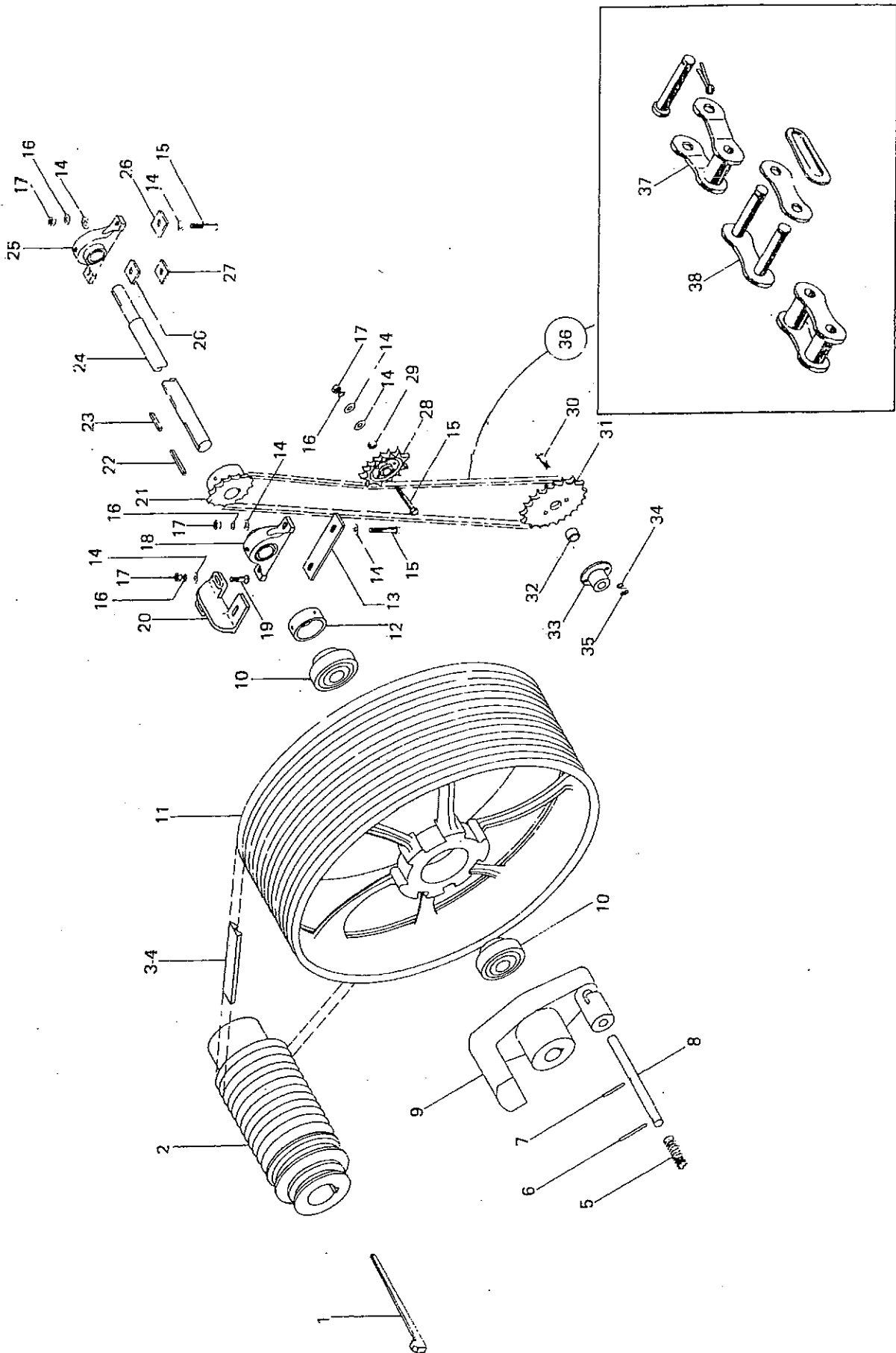


INTAKE AUGER & PARTS.

KEY	PART NUMBER	DESCRIPTION
1	12-1139	Tube, Mill To Mixer
2	37-2186	Sprocket, 40B24, 1 1/8" Bore
3	03-3351	Set Screw, 5/16" - 18 x 3/4", Square Head
4	22-3350	Jam Nut, 5/16" - 18, Hex
5	22-2726	Nut, 3/8" - 16, Hex
6	03-2118	Washer, 3/8", Lock
7	01-1915	Flange, 3 Hole, For 1 1/8" Bearing (2 Required)
8	01-2023	Bearing, 1 1/8"
9	03-2017	Bolt, 3/8" - 16 x 1", Carriage
10	01-2010	Lock Collar For 1 1/8" Bearing
11	19-2022	Key, 5/16" x 5/16" x 1 1/4"
12	32-2021	Auger, Mill To Mixer
13	01-2020	Nylon "T" Bearing
14	22-2363	Nut, 5/16" - 18, Hex
15	40-2362	Washer, 5/16", Lock
16	03-2292	Washer, 5/16", Flat
17	03-0590	Bolt, 5/16" - 18 x 1, Hex Cap
18	03-2119	Washer, 3/8", Flat
19	42-2126	Block, Oil Treated Wood
20	03-3354	Bolt, 3/8" - 16 x 2 1/2", Carriage
21	03-1205	Bolt, 1/4" - 20 x 3/4", Hex Cap
22	37-3369	Sprocket, 40A28, 1 1/2" Bore, Washer Welded On One Side
23	05-3370	Oilite Bushing, 1 1/4" I.D. x 1 1/2" O.D. x 1/4" Long
24	10-2008	Shear Hub, 1 1/4" Bore
25	40-2944	Washer, 1/4", Lock
26	22-2766	Nut, 1/4" - 20, Hex
27	08-3353	Chain, A-2040, 29 Pitches Including Connector And Offset Links
28	08-1327	Connector Link With Spring Clip, A-2040
29	08-1338	Offset Link, A-2040
30	37-2026*	Sprocket, 40-18, Idler With Bearing
31	04-1136*	Bracket, Chain Tightener
32	03-1137*	Bolt, 3/8" - 16 x 1 1/2", Hex Cap
33	38-1165*	Spring And Chain, Tightener

\* Used on machines prior to SERIAL NUMBER A426934

# BELT DRIVE-540 RPM

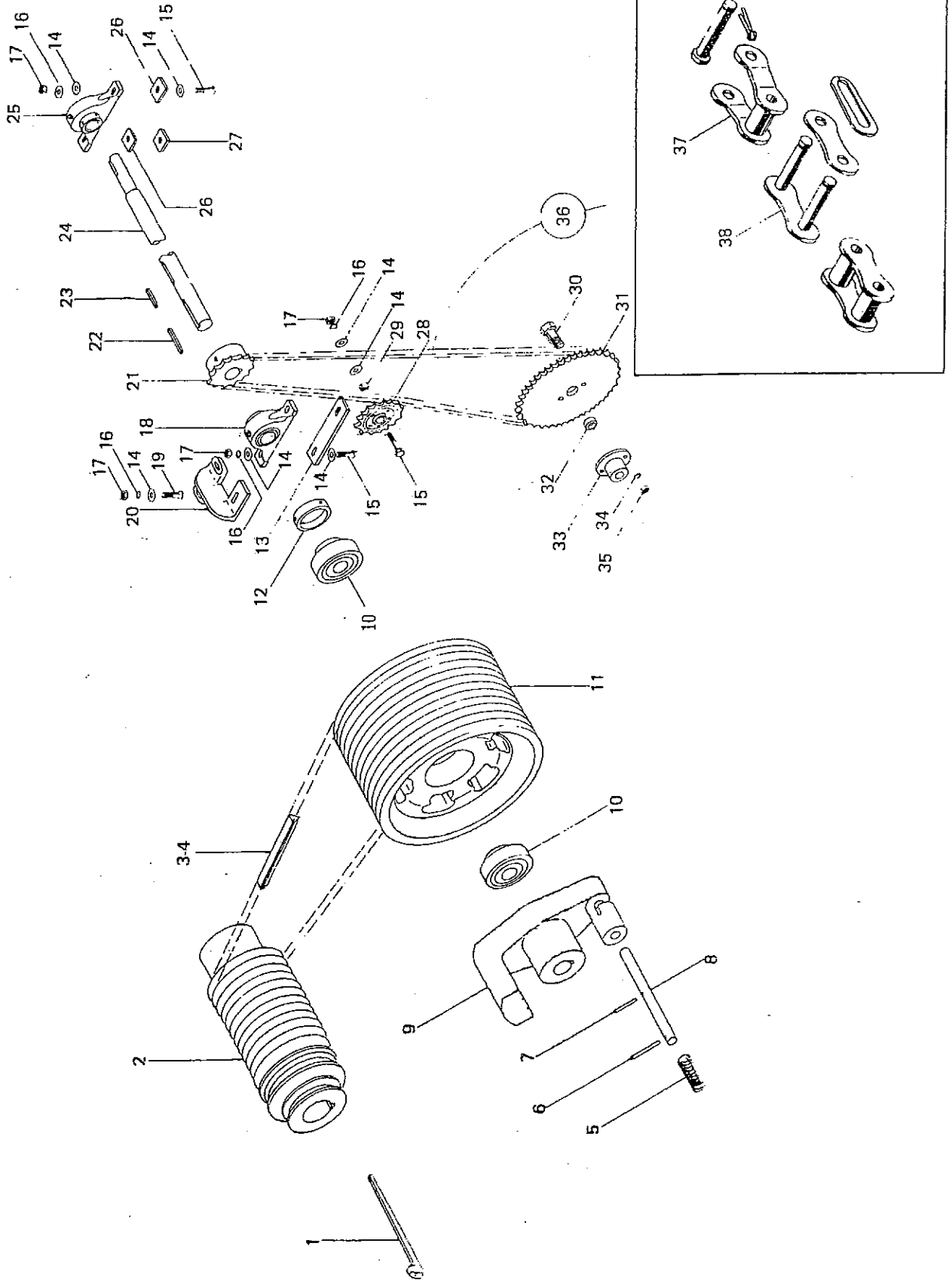




BELT DRIVE - 540 RPM

KEY	PART NUMBER	DESCRIPTION
1	19-1341	3/8", Gib Head, Tapered Key
2	27-1340	4", 14 Groove Pulley
3	02-1361	Matched Set Of Twelve 3V800 Belts
	02-1362	Single 3V800 Belt (Not Sold Separately Unless Belt Lot Number is Known)
4	02-2108	Matched Set Of Six Bands Of Two 3V800 Belts Bonded Together
	02-2109	Single Band Of Two 3V800 Belts Bonded Together (Not Sold Separately Unless Belt Lot Number Is Known)
5	38-1358	Spring, 3/4" x 2", Compression
6	23-1360	Expanpin, 1/4" x 2"
7	23-1346	Expanpin, 1/4" x 1 1/4"
8	23-1359	3/8" Locking Pin
9	26-1386	Drive Clutch Device
10	01-1393	Bearing, 1 3/8" (2 Required)
11	27-1675	22", V-Belt Pulley, 12 Groove
12	01-1394	Lock Collar For 1 3/8" Bearing (Used On Rear Bearing Only)
13	04-3582	Front Jack Shaft Bearing Brace
14	40-0520	Washer, 1/2" Flat, Plated
15	03-0708	Bolt, 1/2" x 2 1/2", Hex Cap, Plated
16	40-0537	Washer, 1/2" Lock, Plated
17	22-0536	Nut, 1/2", Hex, Plated
18	01-1396	Bearing, 1 1/4", Pillow Block
19	03-3047	Bolt, 1/2" x 1 1/4", Carriage, Plate
20	04-1363	Cast Holding Bracket For Bearing
21	37-1677	Sprocket, 60B14, 1 3/8" Bore
22	19-1369	Key, 3/8" x 3/8" x 5"
23	19-1370	Key, 3/8" x 3/8" x 1"
24	32-1398	1 3/8" x 39" Jack Shaft, 1 1/4" On Rear End
25	01-1367	Bearing, 1 1/8", Pillow Block
26	36-3578	Shim, 1/4" Thick
27	36-3579	Shim, 3/8" Thick
28	37-1384	Sprocket, 60-15 Idler With Bearing
29	36-3580	Spacer, 3/8" Black Pipe x 3/4" Long
30	03-1226	Bolt, 3/8" x 1", Hex Cap, Plated
31	37-2176	Sprocket, 60A25, 1 1/2" Bore
	37-2189	Complete Assemble Consisting Of Parts No.s 37-2176, <del>03-2007</del> , 10-2008, 03-1226, 03-2118 and 22-2726
32	<del>03-2007</del>	Bushing, 1 1/4" x 1 1/2" x 1/2"
33	10-2008	Shear Hub, 1 1/4" Bore
34	03-2118	Washer, 3/8" Lock, Plated
35	22-2726	Nut, 3/8", Hex, Plated
36	08-1383	60 Chain 4' 4" Long Including 1 - Offset and 2 - Connectors
37	08-1013	Offset Link
38	08-1012	Connector Link With Spring Clip

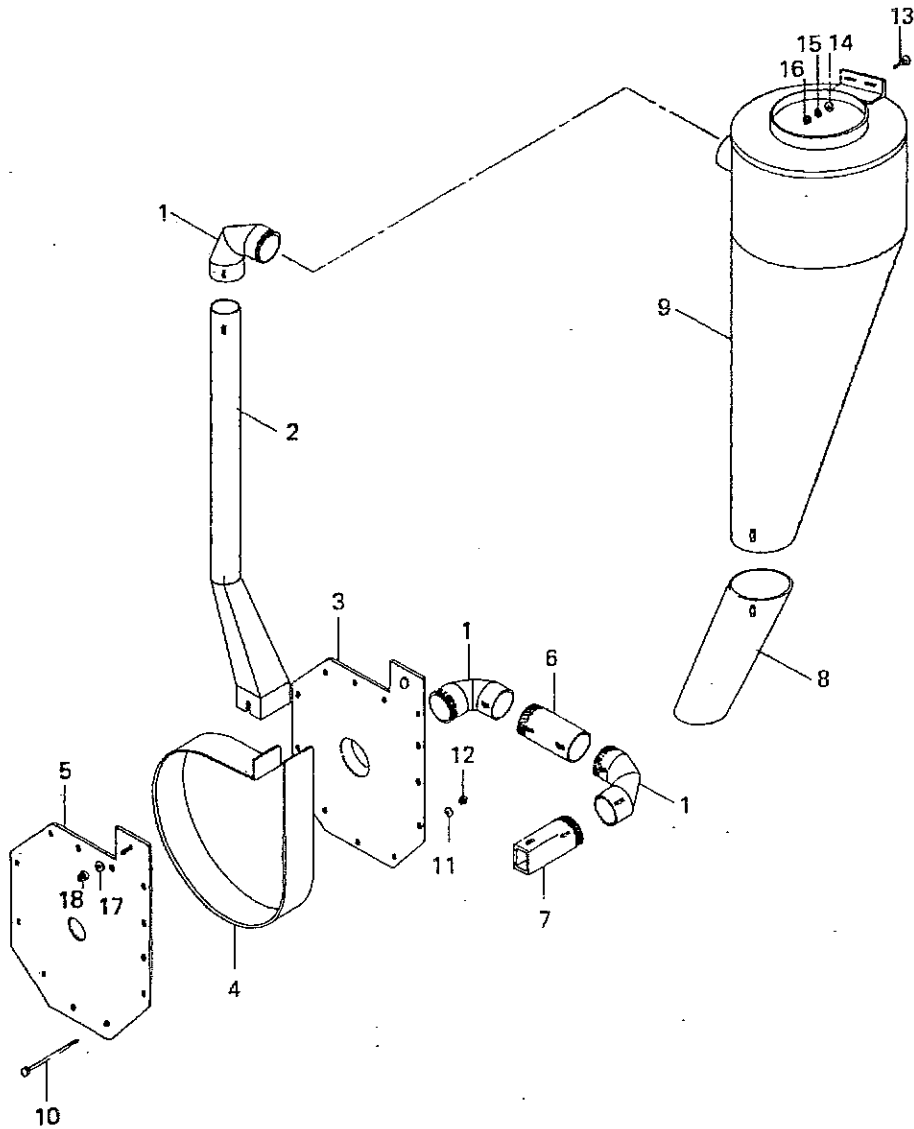
BELT DRIVE-1000 RPM



BELT DRIVE-1000 RPM

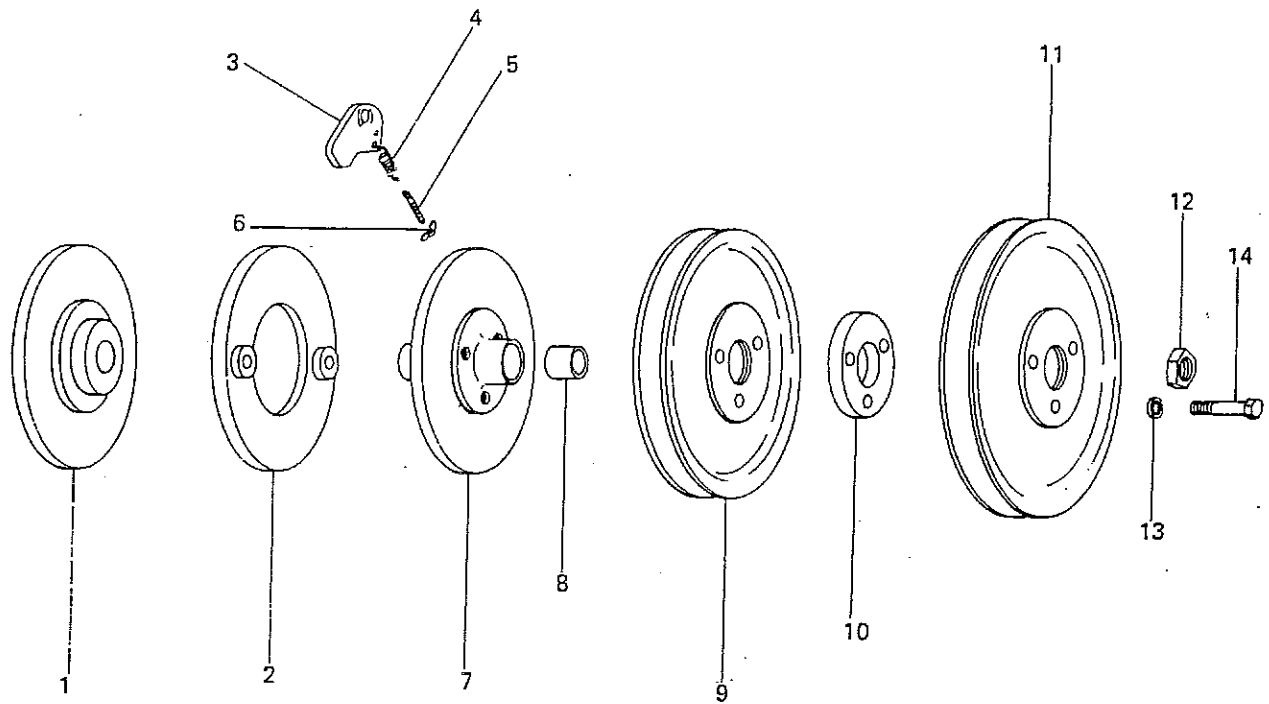
KEY	PART NUMBER	DESCRIPTION
1	19-1341	3/8", Gib Head, Tapered Key
2	27-1340	4", 14 Groove Pulley
3	02-1390	Matched Set Of Twelve 3V600 Belts
	02-3588	Single 3V600 Belt (Not Sold Separately Unless Belt Lot Number is Known)
4	02-2128	Matched Set of Six Bands of Two 3V600 Belts Bonded Together
	02-2129	Single Band of Two 3V600 Belts Bonded Together (Not Sold Separately Unless Belt Lot Number is Known)
5	38-1358	Spring 3/8" x 2", Compression
6	23-1360	Expanpin, 1/4" x 2"
7	23-1346	Expanpin, 1/4" x 1 1/2"
8	23-1359	3/4" Locking Pin
9	26-1386	Drive Clutch Device
10	01-1393	Bearing, 1 3/8" (2 Required)
11	27-1387	12 3/8", V-Belt Pulley, 12 Groove
12	01-1394	Lock Collar For 1 3/8" Bearing (Used On Rear Bearing Only)
13	36-3030	Front Jack Shaft Bearing Brace
14	40-0520	Washer, 1/2" Flat, Plated
15	03-0708	Bolt, 1/2" x 2 1/2", Hex Cap, Plated
16	40-0537	Washer, 1/2" Lock, Plated
17	22-0536	Nut, 1/2", Hex Plated
18	01-1396	Bearing, 1 3/8", Pillow Block
19	03-3047	Bolt, 1/2" x 1 1/4", Carriage, Plated
20	04-1363	Cast Holding Bracket For Bearing
21	37-1852	Sprocket, 50B15, 1 1/2" Bore
22	19-1369	Key, 3/8" x 3/8" x 5"
23	19-1370	Key, 3/8" x 3/8" x 1"
24	32-1398	1 3/8" x 39" Jack Shaft, 1 1/8" On Rear End
25	01-1367	Bearing, 1 1/4", Pillow Block
26	36-3578	Shim, 1/4"
27	36-3579	Shim, 3/8"
28	37-2185	Sprocket, 50-17 Idler With Bearing
29	36-3580	Spacer, 3/8" Black Pipe x 3/8" Long
30	03-1226	Bolt, 3/8" x 1", Hex Cap, Plated
31	37-2181	Sprocket, 50A48, 1 1/2" Bore
	<u>37-2182</u>	Complete Assembly Consisting of Parts Numbers <del>07-2181,</del> <del>05-2007,</del> 10-2008, 03-1226, 03-2118, & 22-2726
32	05-2007	Bushing, 1 1/2" x 1 1/2" x 1/2"
33	10-2008	Shear Hub, 1 1/2" Bore
34	03-2118	Washer, 3/8" Lock, Plated
35	22-2726	Nut, 3/8", Hex, Plated
36	08-1389	RC-50 4'8" Long Chain Including Two Connectors
37	08-1377	Offset Link
38	08-1376	Connector Link With Spring Clip

# MILL-DUST COLLECTOR ASSEMBLY



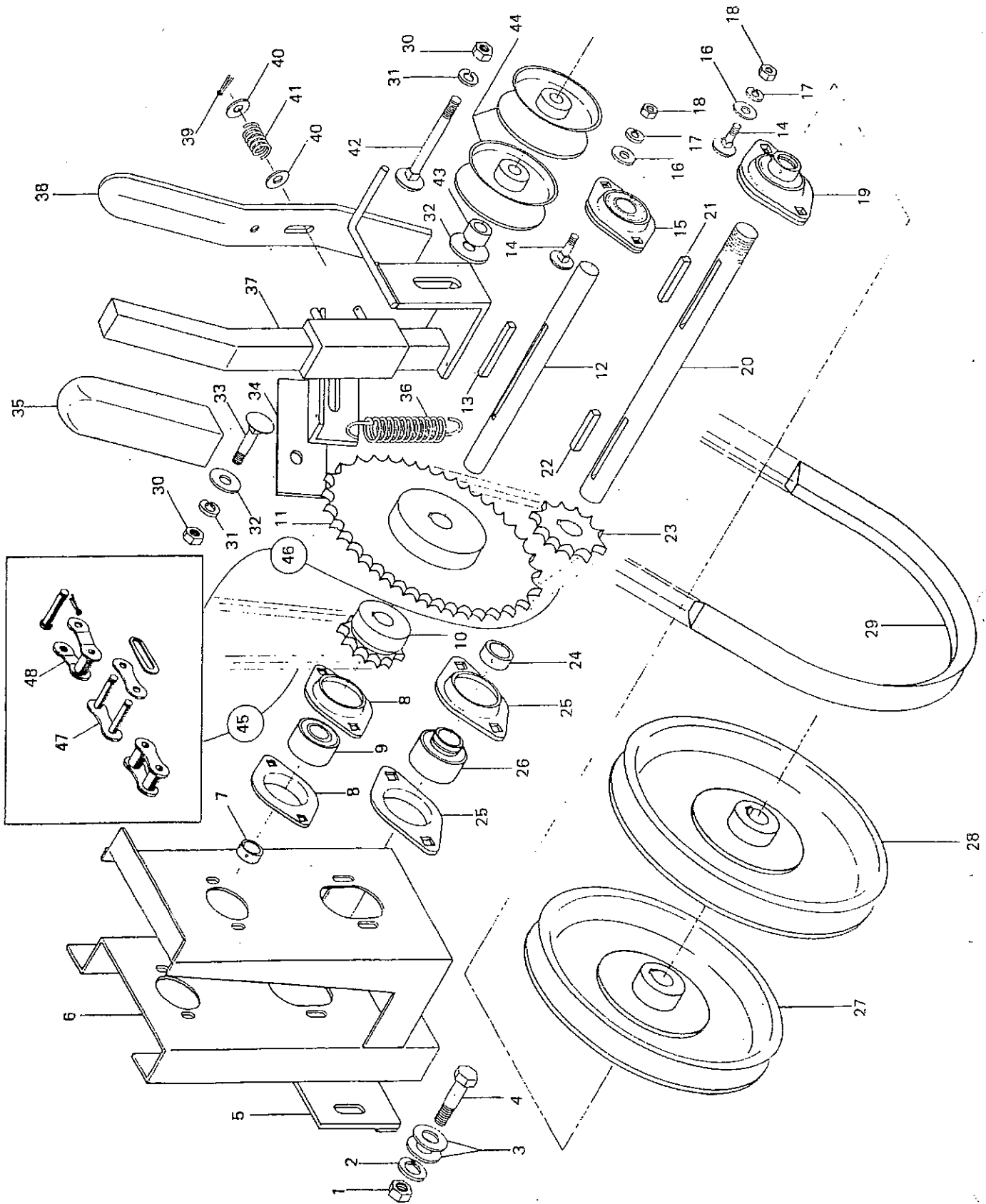
KEY	PART NUMBER	DESCRIPTION
1	24-1278	4" Pipe Elbow With Brackets
2	24-1277	Pipe From Blower To Dust Collector
3	16-1284	Fan Housing - Outside
4	16-1281	Circular Fan Housing
5	16-1283	Fan Housing - Next To Mill
6	24-1286	4" Blower Pipe - 8½" Long
7	24-1285	4" Blower Pipe - Square On One End
8	24-1280	Coupler Pipe From Dust Collector To Mill To Mixer Tube
9	12-1279	Dust Collector
10	03-1282	Bolt, ¼" x 5", Hex Cap, Plated
11	40-2362	Washer, ¼" Lock, Plated
12	22-2363	Nut, ¼" Hex, Plated
13	03-3518	Bolt, ⅝" x 1½" Carriage, Plated
14	03-2119	Washer, ⅝" Flat, Plated
15	03-2118	Washer, ⅝" Lock, Plated
16	22-2726	Nut, ⅝" Hex, Plated
17	03-2292	Washer, ⅝" Flat, Plated
18	22-2019	Nut, ¼" Whiz Lock Plated

# GOVERNOR UNIT



KEY	PART NUMBER	DESCRIPTION
1	26-1703	Plate, Governor Driven
2	26-1704	Plate, Pressure Drive
3	26-1707	Weight, Governor
4	38-1706	Spring, 109 Extension
5	03-1705	Bolt, 1/4" x 2", With 1/8" Hole
6	22-1253	Wing Nut, 1/4", Plated
7	26-1708	Plate, Governor Drive
8	05-1316	Bushing, 1" x 1 1/4" x 1 1/4"
9	27-1709	Pulley, 9"
10	36-1710	Spacer, Pulley
11	27-1711	Pulley, 10"
12	22-1713	Nut, 1" 14 SAE, Jam
13	40-2362	Washer, 3/16" Lock, Plated
14	03-1712	Bolt, 3/8" x 2", Hex Cap, Plated
15	20-1700	Complete Governor Unit

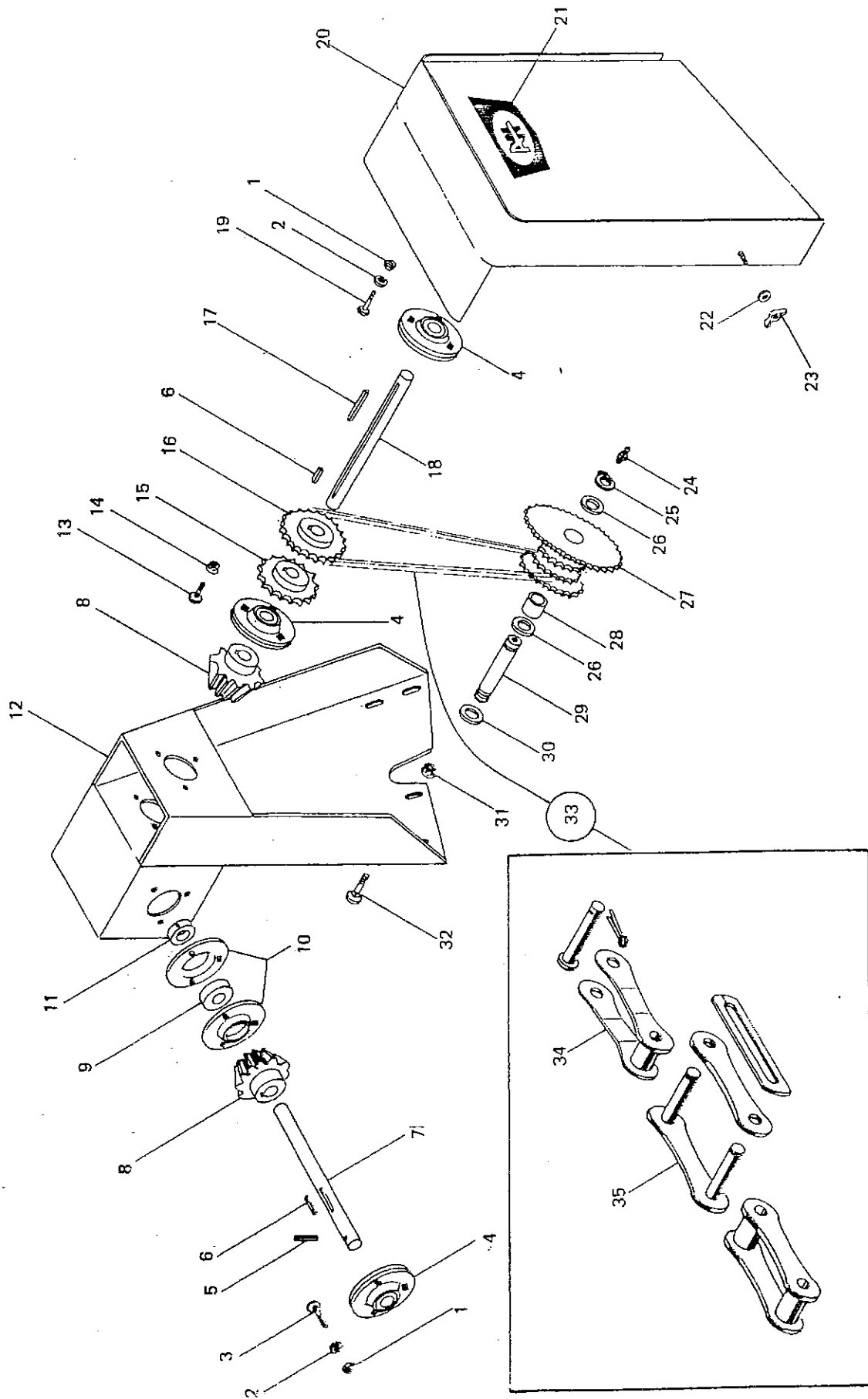
# BOTTOM DRAG DRIVE



# BOTTOM DRAG DRIVE

KEY	PART NUMBER	DESCRIPTION
1	22-0536	Nut, 1/2" Hex, Plated
2	40-0537	Washer, 1/2" Lock, Plated
3	40-0520	Washer, 1/2" Flat, Plated
4	03-1477	Bolt, 1/2" x 1 1/2", Hex Cap, Plated
5	36-1478	Shim For Bottom Drive Unit
6	12-1479	Bottom Drive Unit
7	01-0857	Lock Collar For 3/4" Bearing
8	01-0858	Flange, 2 Hole, For 3/4" Bearing
9	01-2168	Bearing, 3/4"
10	37-1484	Sprocket, 40B10, 3/4" Bore
11	37-1485	Sprocket, 40B54, 3/4" Bore
12	32-1483	Shaft, 3/4" x 6"
13	19-1482	Key, 1/4" x 1/4" x 2 1/4"
14	03-1241	Bolt, 3/8" x 3/4", Carriage, Plated
15	01-1480	Bearing, Lock Collar & Flanges (Complete 3/4" Unit)
16	03-2292	Washer, 3/8" Flat, Plated
17	40-2362	Washer, 3/8" Lock, Plated
18	22-2363	Nut, 3/8" Hex, Plated
19	01-1490	Bearing, Lock Collar & Flanges (Complete 1" Unit)
20	32-1491	Shaft, 1" x 11"
21	19-1492	Key, 1/4" x 1/4" x 2 1/2"
22	19-1000	Key, 1/4" x 1/4" x 1"
23	37-1494	Sprocket, 40B13, 1" Bore
24	01-1230	Lock Collar For 1" Bearing
25	01-2169	Flange, 2 Hole, For 1" Bearing
26	01-1231	Bearing, 1"
27	27-1489	2900 V-Pulley, 1" Bore
28	27-1488	3100 V-Pulley, 1" Bore
29	02-1487	4L460 Belt
30	22-2726	Nut, 3/8" Hex, Plated
31	03-2118	Washer, 3/8" Lock, Plated
32	03-2119	Washer, 3/8" Flat, Plated
33	03-2017	Bolt 3/8" x 1", Carriage Plated
34	36-3355	Shim For Belt Tightener and Clutch Unit
35	42-1467	Plastic Grip For Clutch Handle
36	38-1472	Spring, 1/2" x 3", Ext.
37	09-1468	Belt Tightener And Clutch Unit
38	09-1469	Clutch Lock
39	19-2837	Cotter Key, 3/32" x 1"
40	40-2326	Washer, 1/4" Flat, Plated
41	38-1470	Spring
42	03-3554	Bolt, 3/8" x 2 3/4", Carriage, Plated
43	36-3346	Spacer, 3/8" x 3/8" x 3/32"
44	27-1118	V-Belt, Idler Pulley
45	08-1481	Chain, RC40, 52 P. Including Connector
46	08-1493	Chain, RC40, 62 P. Including Connector
47	08-1329	Connector Link With Spring Clip
48	08-1328	Offset Link

# TOP DRAG DRIVE

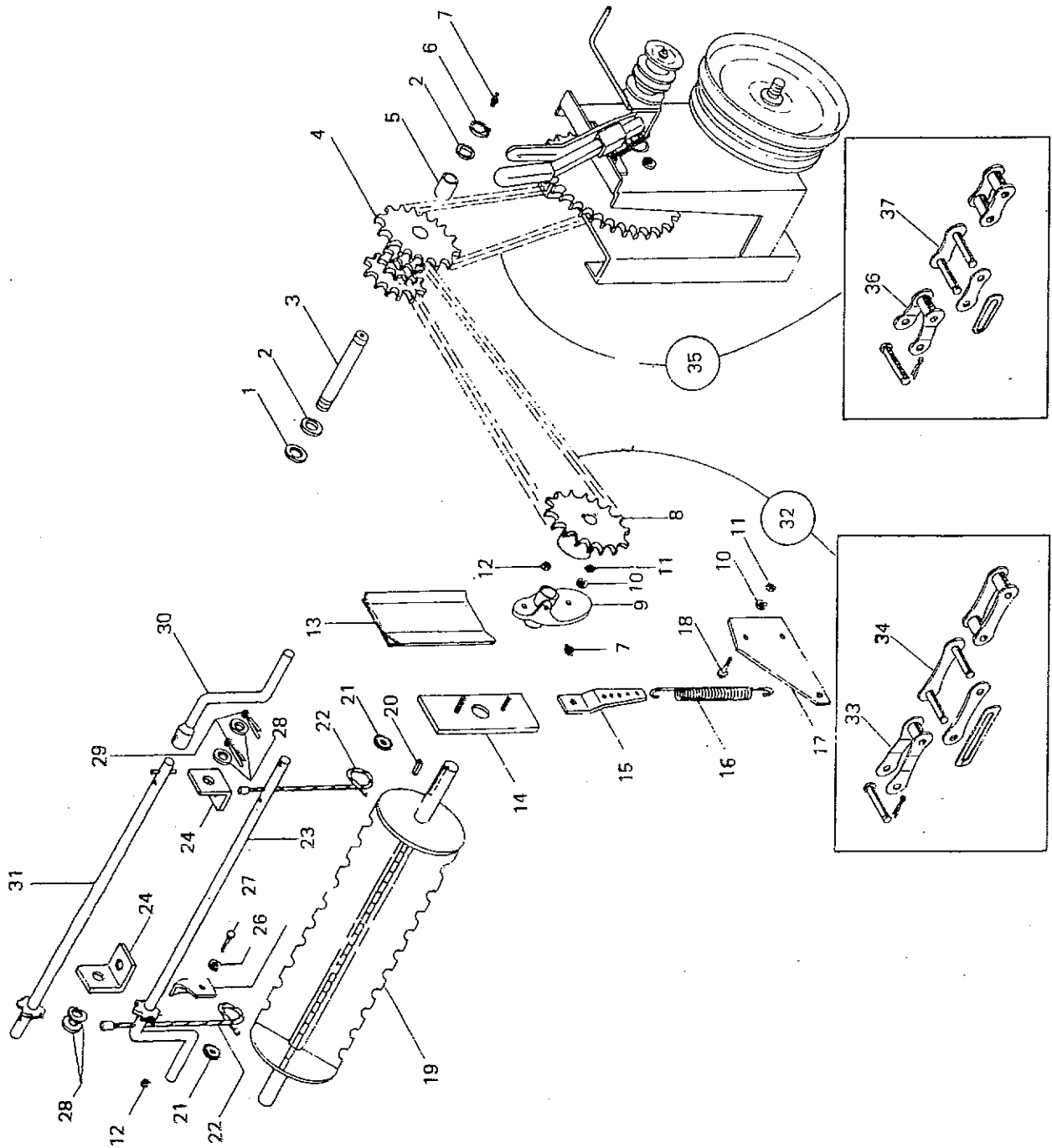




TOP DRAG DRIVE

KEY	PART NUMBER	DESCRIPTION
1	22-2363	Nut, $\frac{3}{8}$ " Hex, Plated
2	40-2362	Washer, $\frac{3}{8}$ " Lock, Plated
3	03-3297	Bolt, $\frac{3}{8}$ " x 1", Carriage, Plated
4	01-1130	Bearing, Flanges & Collar (Complete 1" unit)
5	23-1401	$\frac{3}{8}$ " x 1 $\frac{1}{8}$ " Expanpin
6	19-1000	Key, $\frac{1}{4}$ " x $\frac{1}{4}$ " x 1"
7	32-1476	1" x 9" Shaft
8	14-1232	Gear, 14 Tooth, A-14
9	01-1231	Bearing
10	01-1233	Flange
11	01-1230	Collar, Lock
12	12-1462	Top Drive Unit - Bolts To Hammer Mill
13	03-3529	Bolt, $\frac{3}{8}$ " x $\frac{3}{8}$ ", Carriage, Plated
14	22-2019	Nut, $\frac{3}{8}$ " Whiz Lock, Plated
15	37-1465	Sprocket, 50B17, 1" Bore, Short Hub
16	37-1466	Sprocket, 50B22, 1" Bore
17	19-1463	Key, $\frac{1}{4}$ " x $\frac{1}{4}$ " x 2"
18	32-1464	1" x 6" Shaft
19	03-1214	Bolt, $\frac{3}{8}$ " x $\frac{3}{8}$ ", Hex Cap, Plated
20	33-2166	Shield, Top Drag Drive
21	47-3531	Small A.W. Decal
22	40-2326	Washer, $\frac{1}{4}$ " Flat, Plated
23	22-1253	Wing Nut, $\frac{1}{4}$ ", Plated
24	42-1317	Grease Fitting, Straight, $\frac{1}{8}$ " Pipe Thread
25	35-1325	1" Snap Ring
26	40-1323	Washer, 1" I.D. x 1 $\frac{1}{2}$ " O.D. x 10 Gauge
27	37-1475	Cluster Sprocket, 40A40, 50-13, 13 & 18
28	05-1316	1" x 1 $\frac{1}{4}$ " x 1 $\frac{1}{8}$ " Brass Bushing (2 Required)
29	32-1474	1" x 4 $\frac{1}{2}$ " Shaft, L.H. Thread
30	40-0310	Washer, 1" I.D. x 1 $\frac{1}{2}$ " O.D. x 12 Gauge
31	22-2018	Nut, $\frac{3}{8}$ " Whiz Lock, Plated
32	03-2017	Bolt, $\frac{3}{8}$ " x 1", Carriage, Plated
33	08-3532	Chain, A-2050, 41 P. Including Connector
34	08-3522	Offset Link
35	08-1327	Connector Link With Spring Clip
36	20-2167	Top Drag Drive Unit, Complete, Less Shield

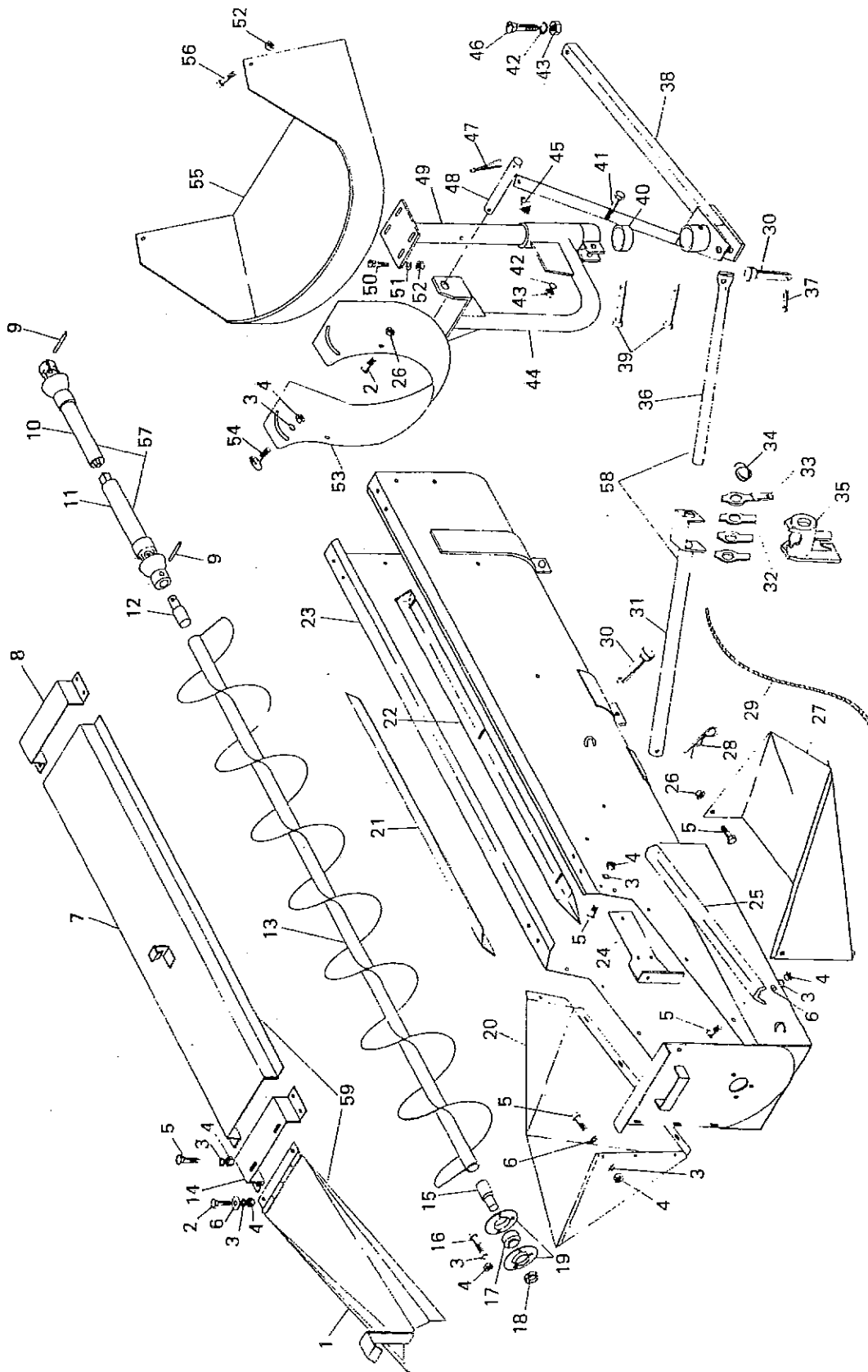
# ROLL FEED



ROLL FEED

KEY	PART NUMBER	DESCRIPTION
1	40-0310	Washer, 1" I.D. x 1½" O.D. x 12 Gauge
2	40-1323	Washer, 1" I.D. x 1½" O.D. x 10 Gauge
3	32-1474	1" x 4½" Shaft, L.H. Thread
4	37-1475	Cluster Sprocket, 40A40, 50-13, 13 & 18
5	05-1316	1" x 1¼" x 1¼" Brass Bushing (2 Required)
6	35-1325	1" Snap Ring
7	42-1317	Grease Fitting, Straight, ½" Pipe Thread
8	37-1332	Sprocket, 50B28, 1" Bore
9	01-1120	Bearing, 1" Bore, Cast A-19
10	40-2362	Washer, ⅝" Lock, Plated
11	22-2363	Nut, ⅝" Hex, Plated
12	03-2203	Nut, ⅝" Self Locking, Hex, Plated
13	33-1336	Cover To Fit Slots In Hopper
14	04-1333	Plate, Sliding Roll Feed
15	04-0790	Bracket, Spring Holder - Upper
16	38-1720	Roll Feed Hold Down Spring
17	04-0791	Bracket, Spring Holder - Lower
18	03-0590	Bolt, ⅝" x 1", Hex Cap, Plated
19	32-1334	Head, Roll Feed
20	19-1153	Key, ¼" x ⅜" x 1¼"
21	03-1905	Washer, Special Lock
22	42-0788	Cable, Roll Feed Adjusting
23	29-0796	Crank Assemble
24	04-0792	Bracket, Crank Support
25	04-0793	Bracket, Crank Lock
26	03-2292	Washer, ⅝" Flat, Plated
27	03-1214	Bolt, ⅝" x ¾", Hex Cap, Plated
28	40-3521	Washer, ⅝" I.D. x 1 ⅝" O.D., Plated
29	19-2070	Cotter Key, ⅜" x 1"
30	09-1863	Crank Handle - Used With Part No. 29-1864
31	29-1864	Crank Rod - Used With Molasses Attachment
32	08-1331	Chain, A-2050, 24 P. Including Connector
33	08-3522	A-2050 Offset
34	08-1327	Connector Link With Spring Clip
35	08-1481	Chain, RC40, 52 P. Including Connector
36	08-1328	Offset Link
37	08-1329	Connector Link With Spring Clip

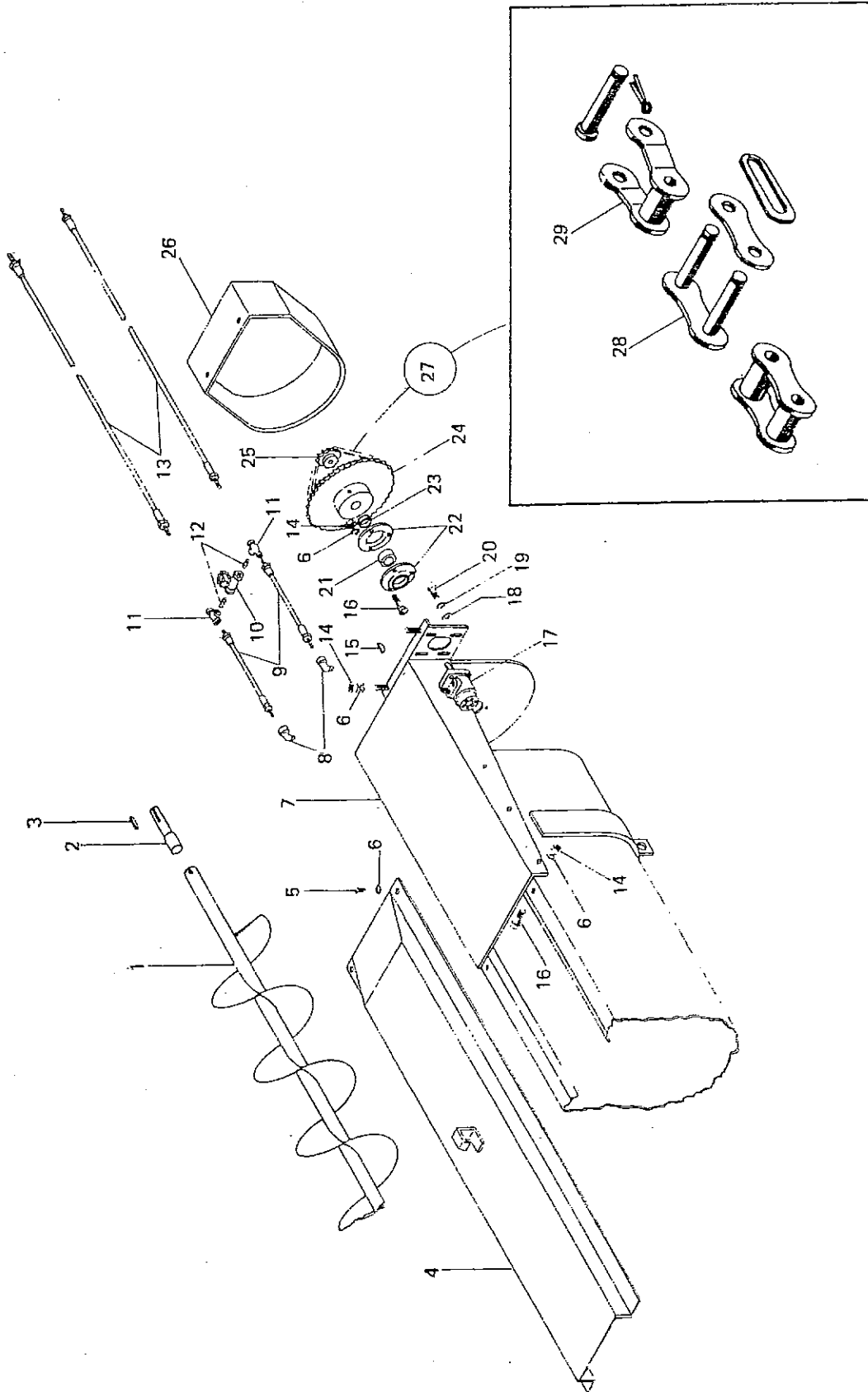
# MECHANICAL AUGER FEEDER



## MECHANICAL AUGER FEEDER

KEY	PART NUMBER	DESCRIPTION
1	33-2365	Bottom Drag Auger Safety Shield
2	03-1214	Bolt, $\frac{5}{16}$ " x $\frac{3}{4}$ " Hex
3	40-2362	$\frac{5}{16}$ " Lock Washer
4	22-2363	Hex Nut $\frac{5}{16}$ "
5	03-0688	Bolt, $\frac{3}{4}$ " x $\frac{3}{4}$ " Hex
6	03-2292	$\frac{3}{4}$ " Flat Washer
7	33-2361	Main Drag Auger Safety Shield
8	04-2360	Top Brace Support Bracket
9	23-1401	$\frac{3}{16}$ " x 1 $\frac{1}{2}$ " Expanpin
10	26-1501	Power Shaft Half - Attaches to top drive unit
11	26-1502	Power Shaft Half - Attaches to Auger
12	32-1533	Plug, Top 1" x 1 $\frac{1}{2}$ " x 3" Welded
13	32-1405	10" Auger for 7' Feeder
14	04-2364	Bottom Brace Support Bracket
15	32-1532	Plug, Bottom 1" x 1 $\frac{1}{2}$ " x 4" Welded
16	03-0590	Bolt, $\frac{3}{16}$ " x 1" Hex
17	01-1231	1" Bearing Only
18	01-1230	Collar Only for 1" Bearing
19	01-1233	Flange for 1" Bearing
20	33-1515	Left Side of Bottom Hopper Panel
21	42-2139	Angle Iron for Left Side of Feeder
22	42-1505	Angle Iron for Right Side of Feeder
23	16-1513	Auger Feeder Housing
24	04-1543	Hinge and Support Plate
25	04-1542	Angle, Bottom Reinforcing
26	03-2203	Nut, $\frac{3}{16}$ " Hex Self Locking
27	33-1541	Right Side Folding Hopper Panel
28	23-3583	Hair Pin $\frac{3}{16}$ " x 3"
29	42-1899	Polyprothlene Rope 7' 6" x $\frac{3}{16}$ " Yellow
30	23-2143	Clevis Pin $\frac{3}{8}$ " x 2 $\frac{1}{4}$ "
31	18-1413	Top Support Pipe of Jack
32	40-1536	Washers - Set of 4 Clamping
33	40-3584	1 - Clamping Washer with Hole for Rope
34	38-1520	Spring For Clamp
35	06-1414	Clamp for Jack (Complete with Spring and Washers)
36	18-1415	Bottom Support Pipe of Jack
37	19-3585	Cotter Pin $\frac{3}{32}$ " x 1 $\frac{1}{4}$ "
38	04-1511	Bottom Support for Swivel Unit ("A" Frame)
39	23-2142	Clevis Pin $\frac{3}{8}$ " x 2 $\frac{1}{4}$ "
40	36-3586	Spacer, Pipe $\frac{3}{4}$ " x 2 $\frac{1}{2}$ "
41	03-2539	Bolt, $\frac{1}{2}$ " x 1 $\frac{3}{4}$ " Hex.
42	40-0537	Lock Washer $\frac{1}{2}$ "
43	22-0536	Nut, $\frac{1}{2}$ " Hex.
44	04-1508	Swinging Auger Housing Support
45	42-1317	Grease Fitting
46	03-0539	Bolt $\frac{1}{2}$ " x 1" Carriage
47	19-2663	Cotter Pin $\frac{3}{32}$ " x 1 $\frac{1}{2}$ "
48	29-1512	Rod, $\frac{3}{8}$ " x 10"
49	24-1509	Vertical Support Pipe
50	03-2017	Bolt, $\frac{3}{8}$ " x 1" Carriage
51	03-2119	Washer, $\frac{3}{8}$ " Flat
52	22-2306	Nut, $\frac{3}{8}$ " Hex. Self Locking
53	33-1506	Auger Housing Downspout
54	03-3332	Bolt $\frac{3}{8}$ " x $\frac{3}{4}$ " Step Carriage
55	15-1507	Hopper for Hammer Mill
56	03-2123	Bolt, $\frac{3}{8}$ " x $\frac{3}{4}$ " Hex.
57	26-1503	Complete Power Shaft for Auger Feeder
58	18-1519	Complete Jack Support for Auger Feeder
59	20-2366	Safety Shield Kit

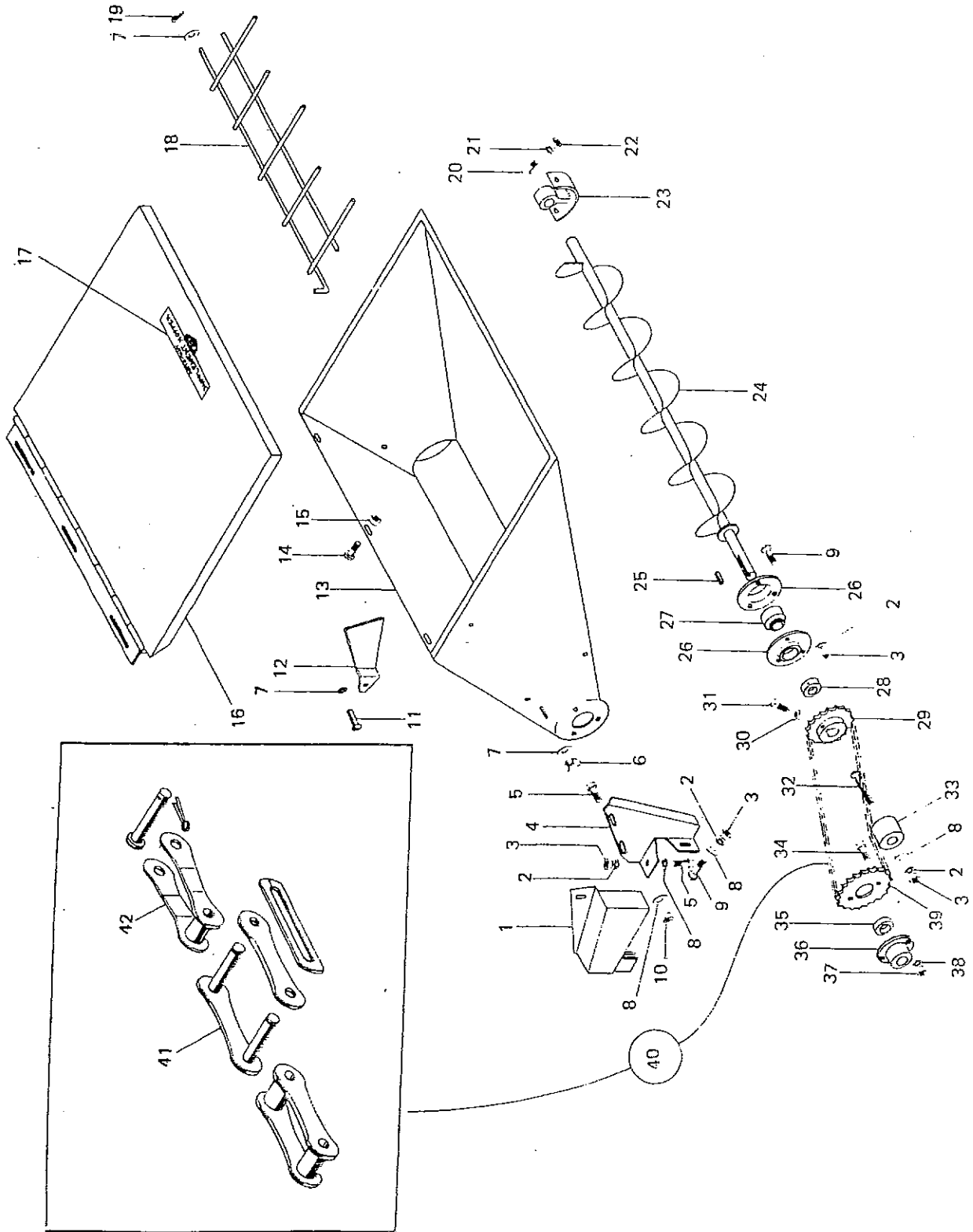
# HYDRAULIC DRIVE AUGER FEEDER



# HYDRAULIC DRIVE AUGER FEEDER

KEY	PART NUMBER	DESCRIPTION
1	32-1419	10" Auger For Hydraulic Drive Feeder
2	32-1420	Plug, 1" x 1 1/8" x 5" Shaft (Welded In)
3	19-1153	Key, 1/4" x 1/4" x 1 1/2"
4	33-3593	Shield, Auger Safety
5	03-3497	Sheet Metal Screw, 5/16" x 1/2", Hex Cap
6	40-2362	Washer, 5/16", Lock, Plated
7	12-1429	Hydraulic Auger Top Support
8	24-0624	1/2" x 90°, Street Elbow
9	17-1400	1/2" Hydraulic Hose x 12" Long
10	17-1424	1/2" Gate Valve Regulator
11	24-0632	1/2" Black Tee
12	24-0631	1/2" Close Nipple
13	17-1425	1/2" Hydraulic Hose x 144" Long
14	22-2019	Nut, 3/8", Hex, Plated
15	19-0618	Half Moon Key, 1/2" x 1"
16	03-1214	Bolt, 5/16" x 3/4", Hex Cap, Plated
17	17-1428	Char-Lynn Hydraulic Motor
18	03-2119	Washer, 3/8", Flat, Plated
19	03-2118	Washer, 3/8", Lock, Plated
20	03-2123	Bolt, 3/8" x 3/4", Hex Cap, Plated
21	01-1231	1" Bearing
22	01-1233	Flange For 1" Bearing
23	01-1230	Lock Collar For 1" Bearing
24	37-1421	40B48 Sprocket, 1" Bore
	37-1422	40B54 Sprocket, 1" Bore
25	37-1081	40B13 Sprocket 1" Bore
26	33-3594	Shield, Drag Auger Drive
27	08-1426	Chain, RC40, 72 P. Including Connector and Offsets (Use With 48T. Sprocket)
	08-3595	Chain, RC40, 78 P. Including Connector and Offsets (Use With 54T. Sprocket)
28	08-1329	Connector Link With Spring Clip
29	08-1328	Offset Link

# SUPPLEMENT HOPPER

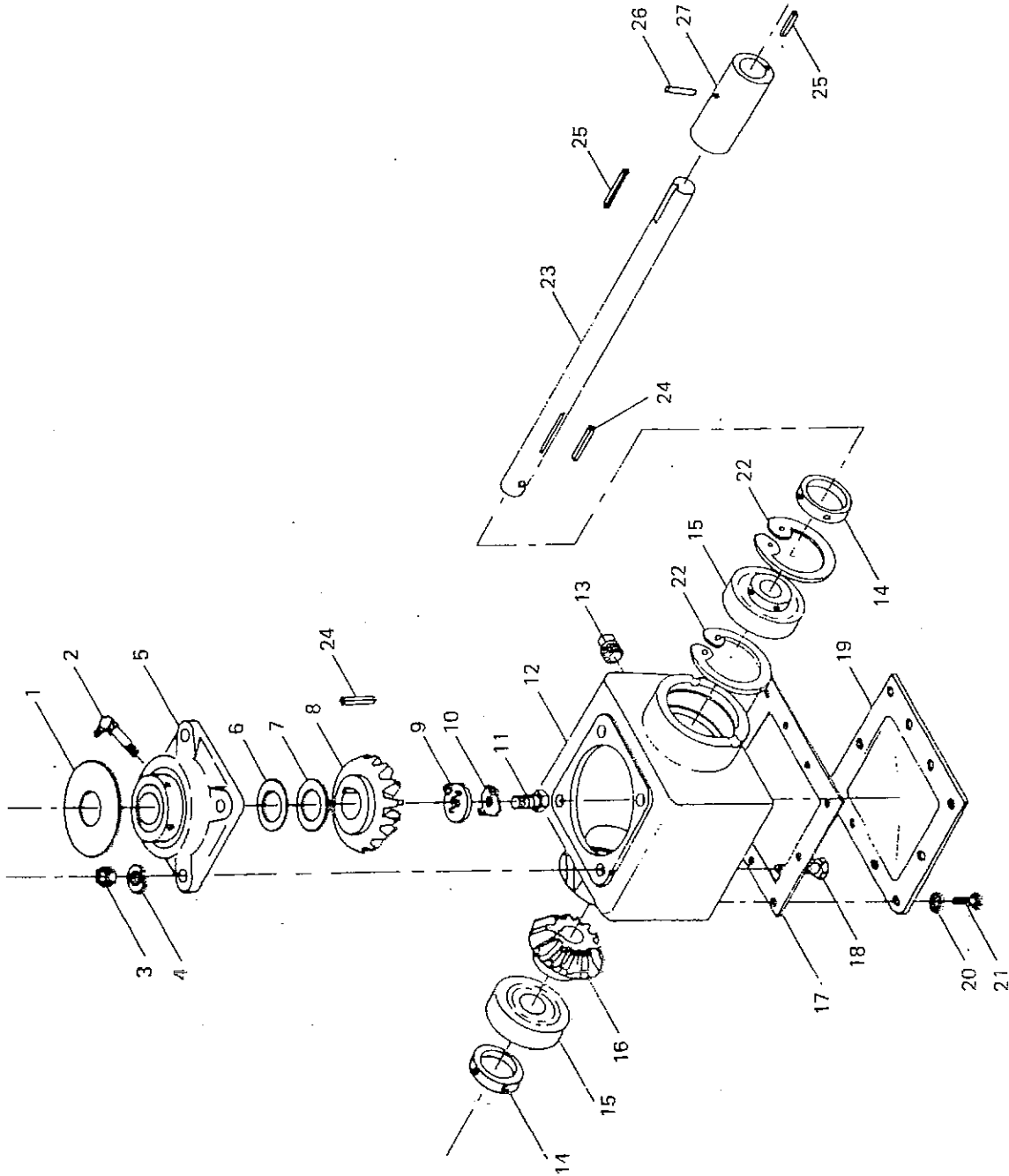




SUPPLEMENT HOPPER

KEY	PART NUMBER	DESCRIPTION
1	33-2110	Shield, Supplement Hopper Drive
2	03-2118	Washer, $\frac{3}{8}$ " Lock, Plated
3	22-2726	Nut, $\frac{3}{8}$ " Hex, Plated
4	04-2111	Bracket, Supplement Hopper Support
5	03-1226	Bolt, $\frac{3}{8}$ " x 1", Hex Cap, Plated
6	03-3536	Wing Nut, $\frac{1}{4}$ ", Plated
7	40-2326	Washer, $\frac{1}{4}$ " Flat, Plated
8	03-2119	Washer, $\frac{3}{8}$ " Flat, Plated
9	03-2017	Bolt, $\frac{3}{8}$ " x 1", Carriage, Plated
10	22-2306	Nut, $\frac{3}{8}$ " Self Locking, Plated
11	03-2120	Rivet, $\frac{1}{4}$ " x $\frac{1}{2}$ ", Truss Head
12	42-2112	Latch, Cover Hold Up
13	16-2107	Housing, Supplement Hopper
14	03-2124	Bolt, $\frac{1}{4}$ " x $\frac{1}{2}$ ", Truss Head
15	22-2327	Nut, $\frac{1}{4}$ " Whiz, Plated
16	12-2113	Cover, Hinged
17	42-2117	Decal, Supplement Hopper
18	42-2114	Grate, Hopper
19	23-2121	Cotter Key, $\frac{3}{32}$ " x 1"
20	03-0590	Bolt, $\frac{3}{16}$ " x 1", Hex Cap, Plated
21	40-2362	Washer, $\frac{3}{16}$ " Lock, Plated
22	22-2363	Nut, $\frac{3}{16}$ " Hex, Plated
23	01-2116	Bearing, Nylon "T", Auger Support
24	32-2103	Auger, Supplement Intake
25	19-2125	Key, $\frac{3}{16}$ " x $\frac{3}{16}$ " x 1"
26	01-1915	Flange, 3 Hole, For 1 $\frac{1}{8}$ " Bearing
27	01-2023	Bearing, 1 $\frac{1}{8}$ "
28	01-2010	Lock Collar For 1 $\frac{1}{8}$ " Bearing
29	37-2024	Sprocket, 40B28, 1 $\frac{1}{8}$ " Bore
30	22-3350	Nut, $\frac{3}{16}$ ", Jam
31	03-3351	Set Screw, $\frac{3}{16}$ " x $\frac{3}{4}$ ", Square Head
32	03-3354	Bolt, $\frac{1}{8}$ " x 2 $\frac{1}{2}$ ", Carriage, Plated
33	42-2126	Block, Oil Treated Wood
34	03-1205	Bolt, $\frac{1}{4}$ " x $\frac{3}{4}$ ", Hex Cap, Plated
35	05-3370	Bushing, 1 $\frac{1}{4}$ " x 1 $\frac{1}{2}$ " x $\frac{1}{4}$ ", Oilite
36	10-2008	Shear Hub, 1 $\frac{1}{4}$ " Bore
37	22-2766	Nut, $\frac{1}{4}$ " Hex, Plated
38	40-2944	Washer, $\frac{1}{4}$ " Lock, Plated
39	37-3369	Sprocket, 40A28, 1 $\frac{1}{2}$ " Bore
40	08-2115	Chain, 2040, 43 P. Including 1 Offset and 2 Connectors
41	08-1339	Connector Link With Spring Clip
42	08-1338	Offset Link

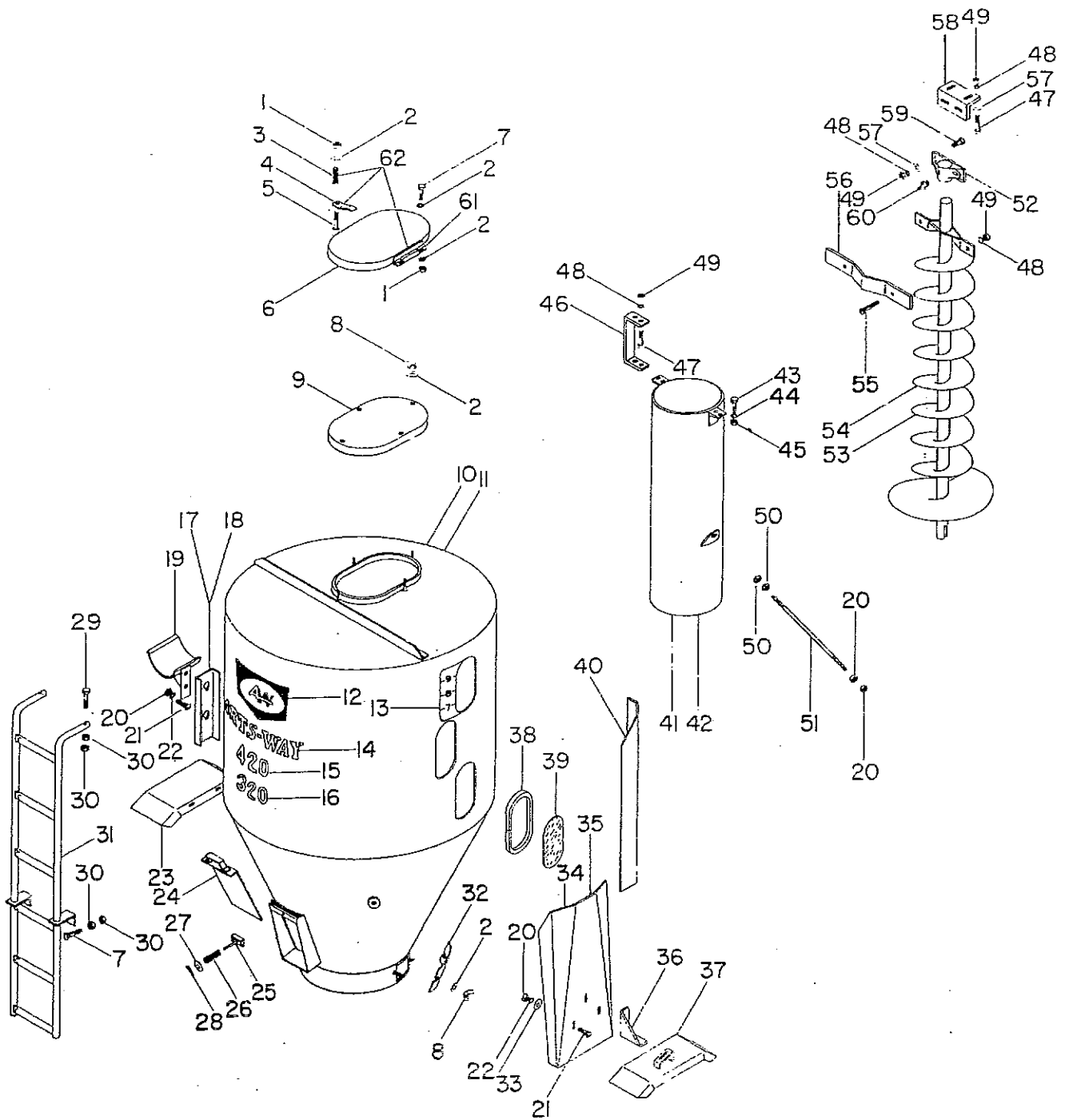
# GEAR BOX ASSEMBLY



# GEAR BOX ASSEMBLY

KEY	PART NUMBER	DESCRIPTION
1	33-1057	Bearing Protector Plate
2	31-1055	Long Grease Fitting
3	22-0536	Nut, 1/2" Hex
4	40-0537	Washer, 1/2" Lock
5	01-2027	Bearing, 1 1/4" Flange
6	40-2029	10 Ga. Washer, 1 1/4" I.D. - 2 1/4" O.D.
7	40-2030	18 Ga. Washer, 1 1/4" I.D. - 2 1/4" O.D.
8	14-2028	Bevel Gear 1 1/8" Bore Hard
9	40-2031	Special Lock Washer
10	40-1072	Special Lock For Bolt
11	03-1073	Bolt, 1/2" x 1 1/4" Hex Cap
12	16-2033	Gear Box
13	31-2034	Pipe Plug 3/4" With Vent
14	01-2036	Lock Collar For 1 1/4" Bearing
15	01-2037	Bearing, 1 1/4" Bore
16	14-2032	Bevel Gear 1 1/2" Bore Hard
17	13-1074	Gear Box Gasket
18	03-1058	Bolt, 1/2" x 2" Hex Cap
19	16-1075	Gear Box Cover
20	40-2362	Washer, 3/8" Lock
21	03-1214	Bolt, 3/8" x 3/4" Hex Cap
22	35-2035	Retaining Ring
23	32-3505	Shaft, 1 1/4" x 18" Ground & Polished
24	19-3118	Key, 3/16" x 3/16" x 1 1/4"
25	19-3506	Key, 3/16" x 3/16" x 2 1/2"
26	23-1360	Expan Pin, 1/2" x 2"
27	10-3507	Shaft Coupler, 1 1/4" I.D. - 2" O.D. 6" Long

# TANK & MIXING AUGER

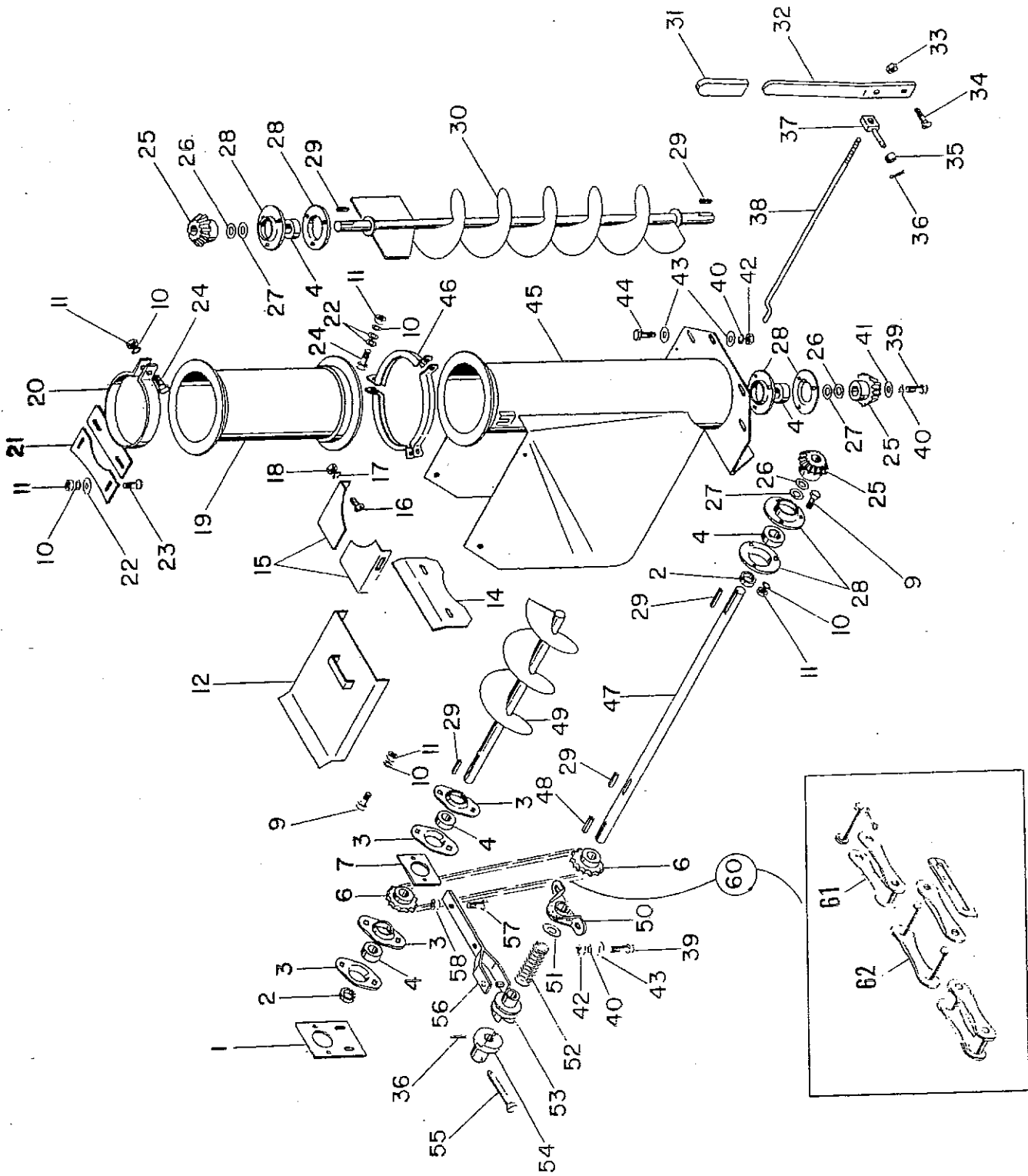


KEY	PART NUMBER	DESCRIPTION
1	03-2203	Nut, 5/16", Hex, Self Locking
2	03-2292	Washer, 5/16", Flat
3	38-1308	Spring, Lid Holder
4	04-2293	Lid Locking Bracket
5	03-2291	Bolt, 5/16" x 2 1/4", Hex Cap
6	33-3566	Lid, Hinged Oval
7	03-1214	Bolt, 5/16" x 3/4", Hex Cap
8	22-0979	Wing Nut, 5/16"
9	33-2307	Lid, Standard Oval
10	12-2083	Tank, Cone and Collar - #420
11	12-2082	Tank, Cone and Collar - #320

TANK & MIXING AUGER

KEY	PART NUMBER	DESCRIPTION
12	42-4326	Large A.W. Decal (3 Required)
13	42-2054	Window Number Set (3 Decals Per Set)
14	42-4328	Arts-Way Name Decal
15	42-2050	#420 Model Number Decal
16	42-2051	#320 Model Number Decal
17	04-3562	Tube Holder Support (Welded To Tank, Left Side)
18	04-3563	Tube Holder Support (Welded To Tank, Right Side)
19	04-2079	Unloading Auger Tube Holder (Right and Left)
20	22-0536	Nut, 1/2", Hex
21	03-0539	Bolt, 1/2" x 1", Carriage
22	40-0537	Washer, 1/2", Lock
23	33-2147	Fender, Left
24	33-1112	Unloading, Sliding Door
25	23-1115	Sliding Door Holder
26	38-1113	Spring, Door Holder
27	40-2326	Washer, 1/4", Flat
28	23-2309	Cotter Pin, 3/32" x 3/4"
29	03-2576	Bolt, 5/16" x 1 1/2", Hex Cap
30	22-2363	Nut, 5/16", Hex
31	15-1909	Ladder
32	33-1114	Clean Out Door
33	40-0520	Washer, 1/2", Flat
34	12-2145	Tank Side Brace (Welded To Tank and Frame, Left Side)
35	12-2146	Tank Side Brace (Welded To Tank and Frame, Right Side)
36	04-1521	Fender Support
37	33-3556	Fender, Right, With Drag Transport Bracket
38	12-1202	Rubber Window Gasket
39	42-1205	Glass Window
40	12-2149	Tank Front Brace, Right Side
41	12-2150	Tank Front Brace, Left Side
42	16-2152 131490	Mixing Auger Tube - #420
43	16-2151	Mixing Auger Tube - #320
44	03-3202	Bolt, 7/16" x 1 1/4", Hex Cap
45	40-2399	Washer, 7/16", Lock
46	22-2377	Nut, 7/16", Hex
47	04-1868	Hanger, Mixing Auger Tube
48	03-0669	Bolt, 3/8" x 1 1/4", Hex Cap
49	03-2118	Washer, 3/8", Lock
50	22-2726	Nut, 3/8", Hex
51	22-3561	Nut, 1/2", Square
52	03-2102	Rod, Mixing Auger Tube Support
53	01-1108	Brass Cast Bearing, 1 1/2" Bore
54	32-2105	Mixing Auger - #420
55	32-2104	Mixing Auger - #320
56	03-3518	Bolt, 3/8" x 1 1/4", Carriage
57	04-3361	Paddle, Mixing Auger
58	03-2119	Washer, 3/8", Flat
59	04-3323	Hanger For Brass Cast Bearing
60	03-1137	Bolt, 3/8" x 1 1/2", Hex Cap
61	42-1317	Grease Fitting, Straight, 1/8" Pipe Thread
62	15-2641	Hinge For Spring Lid
	20-2642	Kit - Parts Necessary To Convert Standard Lid To Spring Lid

# FIRST SECTION BACK AUGER

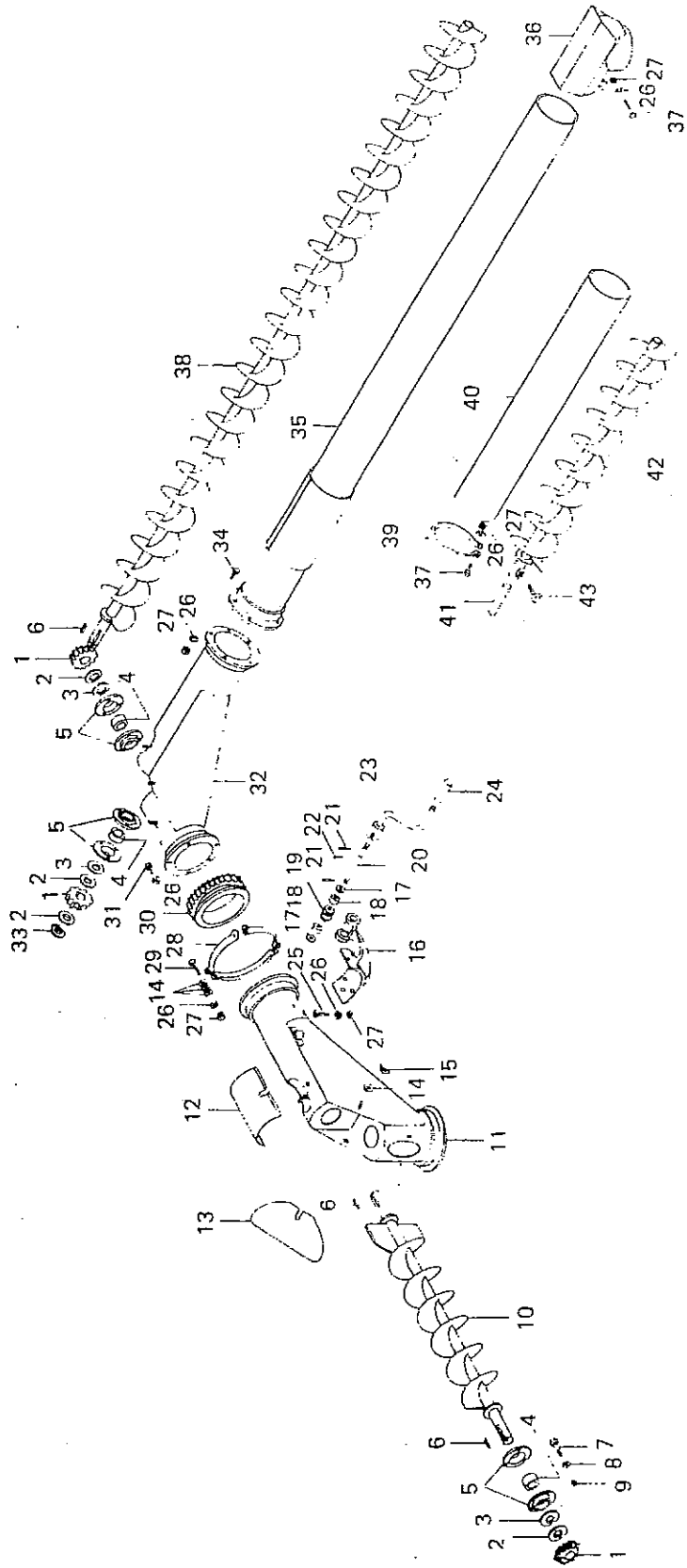


KEY	PART NUMBER	DESCRIPTION
1	04-2160	Bracket For 2 Hole 1 1/8" Bearing
2	01-2010	Collar Only For 1 1/8" Bearing
3	01-2161	Flangette 2 Hole For 1 1/8" Bearing
4	01-2023	Bearing Only 1 1/8"
6	37-2024	Sprocket, 40B28 1 1/8" Bore
7	36-2162	Bearing Spacer

FIRST SECTION BACK AUGER

KEY	PART NUMBER	DESCRIPTION
9	03-1214	Bolt, 5/16" x 3/4" Hex Cap
10	40-2362	Washer, 5/16" Lock
11	22-2363	Nut, 5/16" Hex
12	33-1237	Cover, Unloading Hopper
14	13-2164	Steel Gasket
15	33-1236	Two Part Feed Deflector
16	03-2124	Bolt, 1/4" x 1/2" Truss Head
17	40-2944	Washer, 1/4" Lock
18	22-2766	Nut, 1/4" Hex
19	16-1752	Tube, 18" Vertical Extension
20	06-0830	Ring Bracket, For 18" Vertical Extension
21	04-0834	Tank Bracket, For 18" Vertical Extension
22	03-2292	Washer, 5/16" Flat
23	03-1241	Bolt, 5/16" x 3/4" Carriage
24	03-3003	Bolt, 5/16" x 1 1/4" Hex Cap
25	14-2058	Bevel Gear, 1 1/8" Bore
26	40-2065	Washer, 1 1/8" I.D. 1 5/8" O.D. 10 Gage
27	40-2075	Washer, 1 1/8" I.D. 1 5/8" O.D. 12 Gage
28	01-1915	Flange Only For 1 1/8" Bearing
29	19-2163	Key, 5/16" x 1 1/2"
30	32-2100	Vertical Back Auger (Standard)
	32-2101	Vertical Back Auger (18" Extension)
31	42-2156	Grip, Clutch Handle
32	09-1216	Clutch Handle
33	22-2306	Nut, 3/8" Hex, Self Locking
34	03-3518	Bolt, 3/8" x 1 1/4" Carriage
35	36-3346	Spacer
36	19-2070	Cotter Pin, 5/32" x 1"
37	03-1217	Eye Bolt, Clutch Adjustment
38	29-2084	Clutch Rod, 28 1/2" Long
39	03-1226	Bolt, 3/8" x 1" Hex Cap
40	03-2118	Washer, 3/8" Lock
41	40-1227	Washer, 3/8" Special Flat
42	22-2726	Nut, 3/8" Hex
43	03-2119	Washer, 3/8" Flat
44	03-0669	Bolt, 3/8" x 1 1/4" Hex Cap
45	16-2106	First Section Unloading Unit
46	06-1248	Swivel Clamp Ring, 3-Piece
47	32-2098	Back Auger Shaft 1 1/8" x 30"
48	19-2157	Key, 5/16" x 3 1/2"
49	32-2099	Pusher Auger, 1 1/8" Bearing End
50	01-2154	Bearing, 1 1/8" Steel Pillow Block
51	40-2088	Washer, 1 1/4" I.D. x 1 3/4" O.D.
52	38-2127	Clutch Spring
53	26-2066	Clutch Casting, A-66
54	26-2067	Clutch Casting, A-67
55	23-2068	Clevis Pin, 5/16" x 2 3/8"
56	09-2035	Clutch Arm
57	03-1226	Bolt, 3/8" x 1" Hex Cap
58	22-2306	Nut, 3/8" Self Locking Hex
60	08-2155	Chain, 2040 33 Pitches
61	08-1338	Offset Link
62	08-1327	Connector Link With Spring Clip

DISCHARGE AUGER TOP UNIT

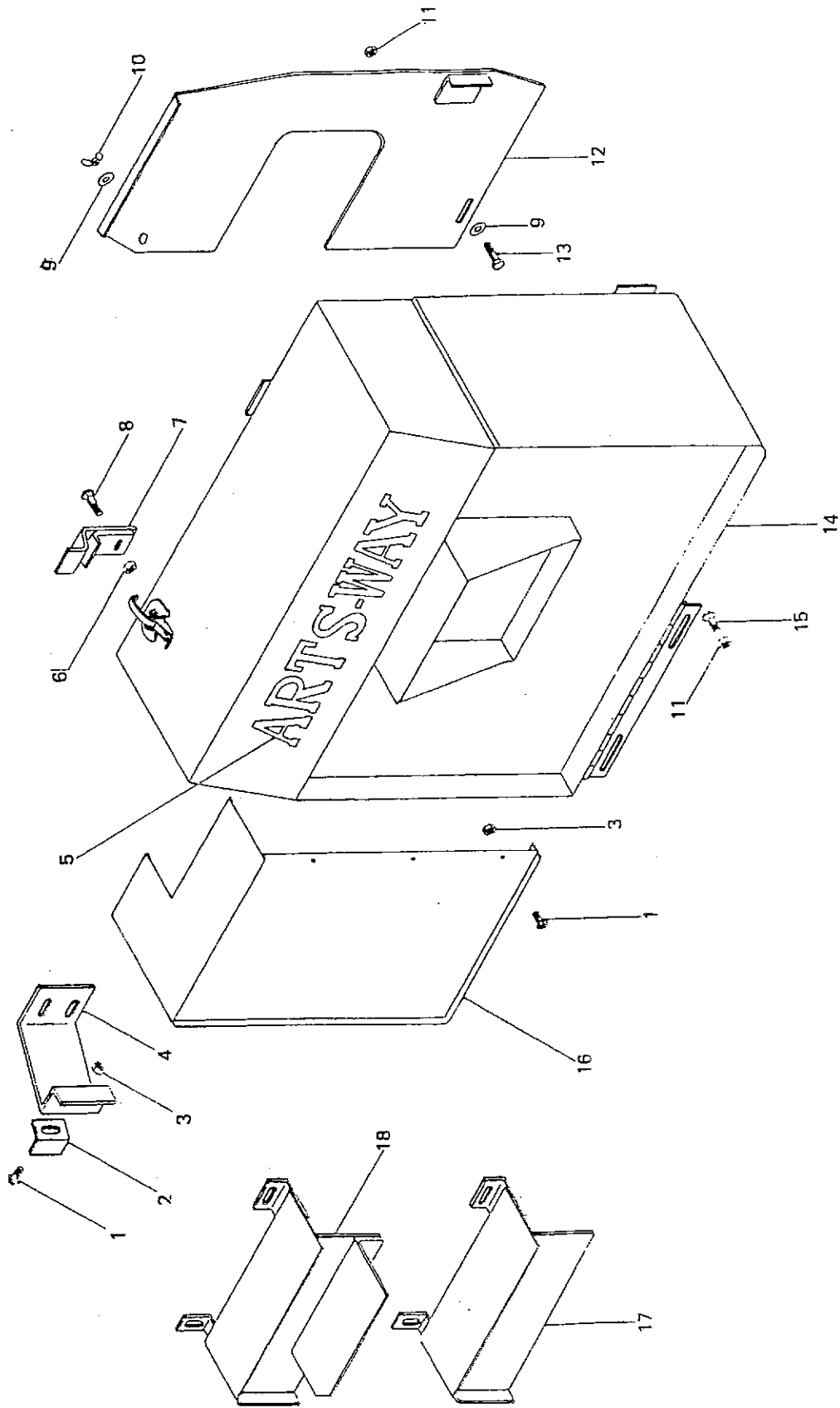




## DISCHARGE AUGER TOP UNIT

KEY	PART NUMBER	DESCRIPTION
1	14-2058	Bevel Gear, Forged & Hardened, 1 1/8" Bore
2	40-2065	Washer, 1 1/8" I.D. x 1 5/8" O.D. x 10 Gage
3	40-2075	Washer, 1 1/8" I.D. x 1 5/8" O.D. x 12 Gage
4	01-2023	Bearing Only, 1 1/8" Bore
5	01-1915	Flange, 10 Gage, For Bearing
6	19-2076	Key, 5/16" x 5/16" x 1 1/8"
7	03-2017	Bolt, 3/8" x 1", Carriage, Plated
8	03-2118	Washer, 3/8" Lock, Plated
9	22-2726	Nut, 3/8" Hex, Plated
10	32-2059	6" Cross Auger, 1 1/8" Shaft
11	16-2077	Discharge Tube Elbow
12	33-1252	Clean Out Door
13	33-1251	Bevel Gear Shield
14	03-2292	Washer, 3/8" Flat, Plated
15	22-0979	3/8" Wing Nut
16	16-1259	Worm Gear Holder Casting
17	40-3519	Thrust Washer, 3/8" I.D. x 1" O.D. x 14 Gage
18	01-1258	3/8" Thrust Bearing
19	14-1260	Steel Worm Gear
20	32-1257	3/8" x 7 1/2" Worm Gear Shaft
21	23-1255	1/4" x 1 1/4" Expan Pin
22	23-1256	3/4" x 1" Expan Pin
23	09-1250	Crank
24	42-2064	Plastic Grip For Crank
25	03-3308	Bolt, 3/8" x 1", Flat Head, Plated
26	40-2362	Washer, 3/8" Lock, Plated
27	22-2363	Nut, 3/8" Hex, Plated
28	06-1248	3-Piece Swivel Clamp Ring
29	03-0590	Bolt, 3/16" x 1", Hex Cap, Plated
30	14-1249	Cast Ring Gear
31	03-3228	Bolt, 3/16" x 3/8", Hex Cap
32	16-2078	Discharge Tube Elbow
33	35-3520	1 1/8" Snap Ring
34	03-1214	Bolt, 3/8" x 3/8", Hex Cap, Plated
35	16-1246	79" Tube (Standard)
	16-1764	91" Tube (1' Extension)
	16-1765	103" Tube (2' Extension)
	16-1766	115" Tube (3' Extension)
36	16-1592	Unloading Auger Hood
37	03-3003	Bolt, 3/8" x 1 1/4", Hex Cap, Plated
38	32-2060	Auger With 95" Shaft (Standard)
	32-2061	Auger With 107" Shaft (1' Extension)
	32-2062	Auger With 119" Shaft (2' Extension)
	32-2063	Auger With 131" Shaft (3' Extension)
39	06-1585	Band, Extension Holding
40	16-1580	Tube, 2' Extension
	16-1581	Tube, 3' Extension
	16-1582	Tube, 4' Extension
	16-1583	Tube, 5' Extension
	16-1584	Tube, 6' Extension
41	32-1586	Shaft, 1 3/8" x 8"
42	32-1587	Auger, 2' Extension
	32-1588	Auger, 3' Extension
	32-1589	Auger, 4' Extension
	32-1590	Auger, 5' Extension
	32-1591	Auger, 6' Extension
43	03-087E	Set Screw, 3/16" x 3/8" Sq. Head

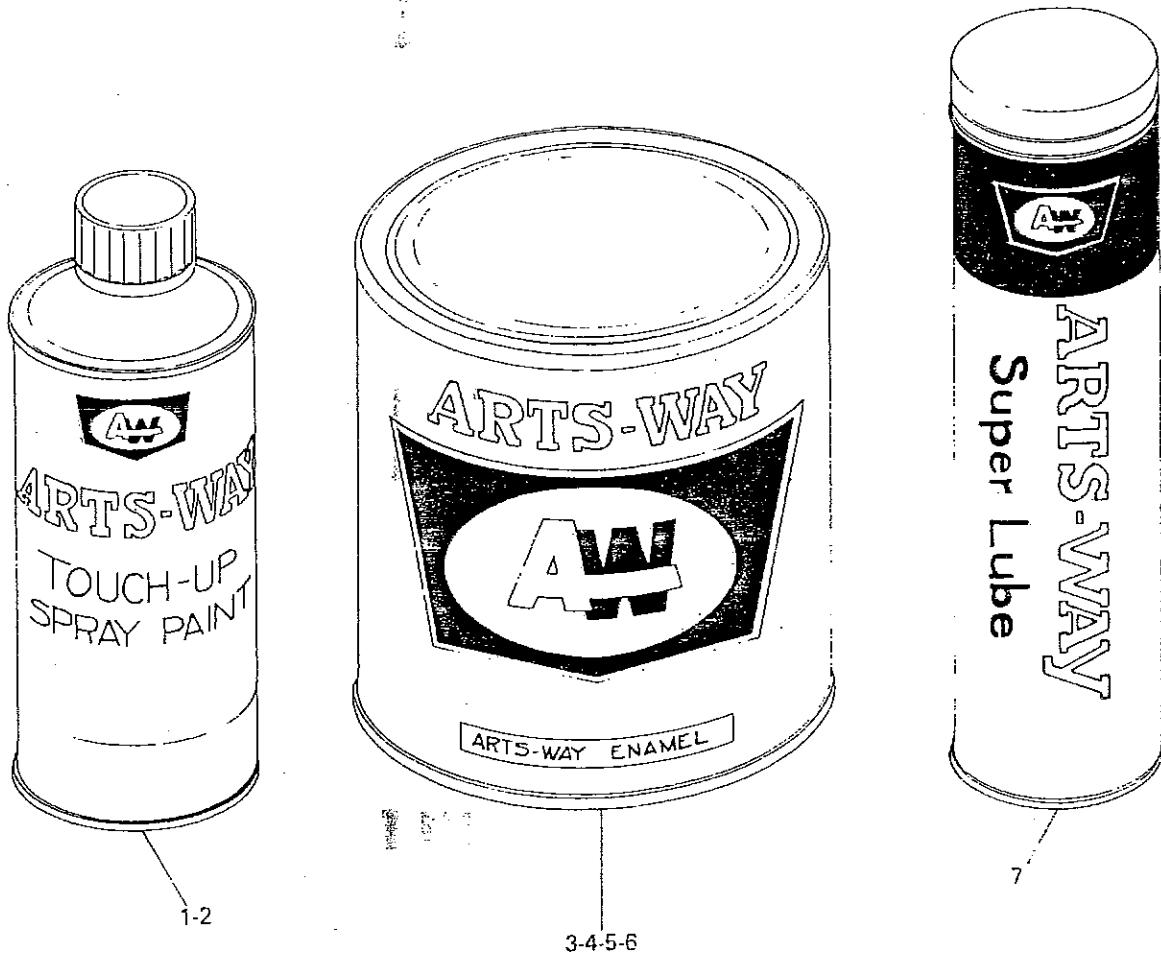
# MAIN DRIVE SHIELD



## MAIN DRIVE SHIELD

KEY	PART NUMBER	DESCRIPTION
1	03-2124	Bolt, 1/4" x 1/2", Truss Head, Plated
2	04-3572	Latch For Swinging Shield
3	22-2327	Nut, 1/4", Whiz, Plated
4	04-2197	Support Bracket For Latch
5	42-2053	Arts-Way Name Decal, Small
6	22-2018	Nut, 3/8", Whiz, Plated
7	04-2194	Top Latch For Main Drive Shield
8	03-2017	Bolt, 3/8" x 1", Carriage, Plated
9	03-2292	Washer, 3/8", Flat, Plated
10	22-0979	Wing Nut, 3/8", Plated
11	22-2019	Nut, 3/8", Whiz, Plated
12	33-2198	Back Plate For Main Drive Shield
13	03-2680	Bolt, 3/8" x 3/8", Hex Cap, Plated
14	33-2190	Main Drive Shield
15	03-3332	Bolt, 3/8" x 3/4", Special Carriage, Plated
16	33-2191	Swinging Shield
17	33-3576	Roll Feed Drive Shield (Used On Machines Not Equipped With Drags)
18	33-3577	Small Drive Shield (Used On Machines Not Equipped With Drags Or Roll Feeds)

PAIN, GREASE & DECALS



KEY	PART NUMBER	DESCRIPTION
1	42-4312	A.W. Green, Spray Can
2	42-4316	A.W. Yellow, Spray Can
3	42-2199	A.W. Green, Quart Can
4	42-2200	A.W. Yellow, Quart Can
5	42-2201	A.W. Green, Gallon Can
6	42-2202	A.W. Yellow, Gallon Can
7	42-0684	A.W. Super Lube Gun Grease
8	20-3570	Complete Set of Decals For Model no. 425 Mixer and Mill
9	20-3571	Complete Set of Decals For Model no. 325 Mixer and Mill

The Above Sets Contain The Following Decals: 2 Model No. Decals; 3 Large A.W. Decals; 2 Large Arts-Way Name Decals; Set of 3 Numbered Window Decals; 1 Arts-Way Name Decal For Main Drive Shield; 1 Arts-Way Supplement Hopper Decal; 1 Small A.W. Decal For Upper Drag Drive Shield or, if not Equipped With Drag, Swinging Shield; and 3-Caution Decals.