



TOP-SPREAD

Loader Mounted Spreader
for Construction and AG Applications

Models 664 / 864



www.artsway-ag.com

Versatility.

TOP-SPREAD is your versatile spreading machine. Quickly load your bales, mulch, or other material all from the seat of your cab, process it, and spread it over your desired area.

Loader Mounted

Attach TOP-SPREAD to your skid steer, end loader, or telehandler for convenient processing.

Efficient Hydraulics

Efficient use of a skid steer's limited hydraulic flow allows TOP-SPREAD to shine. Efficient hose routing, maximized ports, and user-friendly controls make it a breeze to operate.

This allows your oil temperature to stay cooler for longer giving you a longer run time.

Patented Twin Rotors

Hydraulics are able to power the patented twin rotors at an impressive 1,680 rpm to tear through your toughest projects.

Compact Size

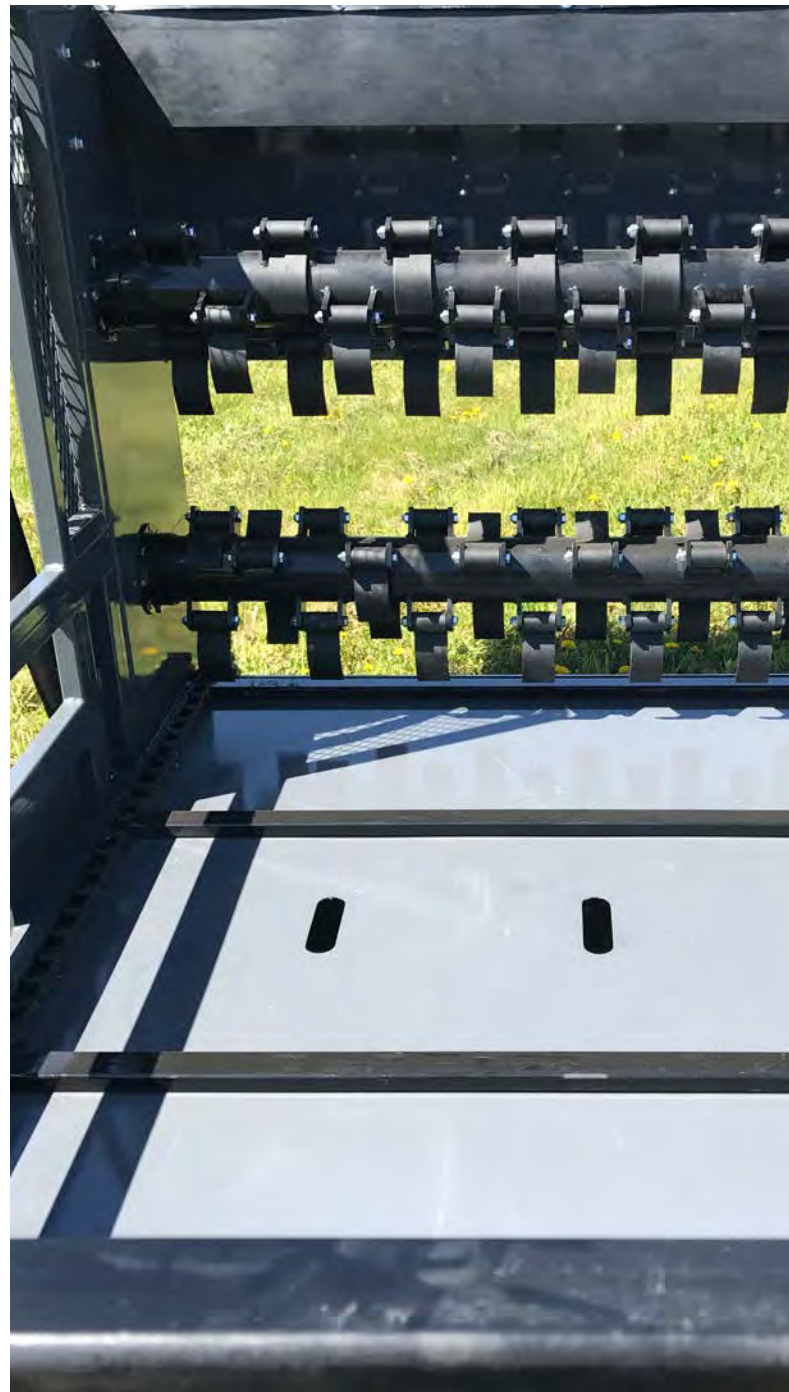
Easily fit TOP-SPREAD on the back of a flatbed pick-up, make tight corners in buildings, use in housing developments, and provide more stability on hillsides. Two sizes available based on your material size.

Safety Features

Safety on the job site and farm are top priority. Screens, easy to access safety guards, loading tines, and debris deflectors.

Easy Maintenance

Simple chain tighteners and easy to access greasable bearings make this a piece of equipment anyone can maintain.







The Right Model to Meet Your Needs.

Two common models allow you to choose based on your material size and skid steer capacity. The 664 is most common. This handles up to a 5'x6' bale. The 864 will handle up to a 5'x8' bale. See specifications for weight and dimensions. Erosion coverage for seeding and embankments, livestock bedding, mulching vegetation, bunk feeding, and windrowing are just a few common uses for TOP-SPREAD.



Standard Connections

Standard flat face hydraulic quick connectors allow you to easily hook up TOP-SPREAD. It also comes standard with a 14 Pin Electrical plug that you can customize to match your skid steer's output. If you do not have an electrical plug, an optional wiring harness with a switch is available.

One-Person Operation

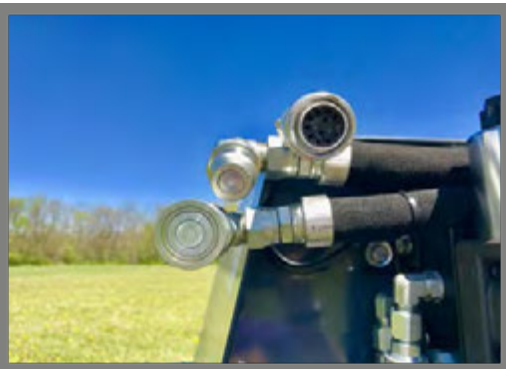
Tilted tines make loading your material a breeze by tipping TOP-SPREAD forward and scooping up your material.

Standard Components

TOP-SPREAD utilizes 60 Heavy drive chain and 667XH apron chain. 5" cup knives are also standard. This allows for easy replacement when it is time.

Versatile Industries

Use TOP-SPREAD to process and spread livestock bedding, process feed into a bunk, spread hay over fresh seeding, or protect vegetation with mulch. This eliminates the need to purchase multiple pieces of equipment for several different jobs with much less labor.



*Shown with optional mulch screens

Product Specifications

	Model 664	Model 864
Dimensions		
Width across skid steer	102 inches/ 259 cm	122 inches/ 310 cm
Width in front of skid steer	67 inches/ 170 cm	67 inches/ 170 cm
Height	67 inches/ 170 cm	67 inches/ 170 cm
Deflector Door	24 inches/ 61 cm	24 inches/ 61 cm
Weight	2,060 pounds/ 934 kg	2,260 pounds/ 1,025 kg
Material Load		
Round Bales	up to a 5'x6' round bale	up to a 5'x6' round bale
Square Bales	up to a 4'x4'x6' square bale	up to a 4'x4'x8' square bale
Loose Material	120 cubic feet/3.4 cu. meters	160 cubic feet/4.5 cu. meters
Requirements		
Loader Weight Capacity	2,500 pounds/ 1,134 kg	2,600 pounds/ 1,179 kg
Hydraulic Flow	20 gpm/ 76 lpm or more	20 gpm/ 76 lpm or more



Product Options

Hydraulic Reference

Sample Hydraulic Reference with 5x6 Dry Cornstalks	
34 gpm/ 129 lpm	40 feet/12 meters of throw
23 gpm/ 87 lpm	33 feet/10 meters of throw
20 gpm/ 76 lpm	30 feet/9 meters of throw
16 gpm/ 61 lpm	20 feet/6 meters of throw

*Estimated based on customer averages with dry 5' x 6' dry cornstalk bales. Dependant on material, conditions, weather, and operator.

Electrical Options

Standard:

- 14 Pin Female Electrical Plug

*Customize to match your skid steer. Not to match a Bobcat.



Optional:

- 14 Pin Male Wiring Harness

*Standard length for skid steers without a plug

*Extended length for tractors/telehandlers



Mulch Screen Option



TOP-SPREAD

Loader Mounted Spreader

for Construction and AG Applications



Models 664 / 864



Art's Way Manufacturing Co. Inc. reserves the right to change design or specifications without notice. Information contained herein is general and is not intended for specific application purposes. Photographs contained herein may be displayed with safety shields and/or guards removed to show mechanical functions only. AW-TS0517

(712) 864-3131

www.artsway-ag.com