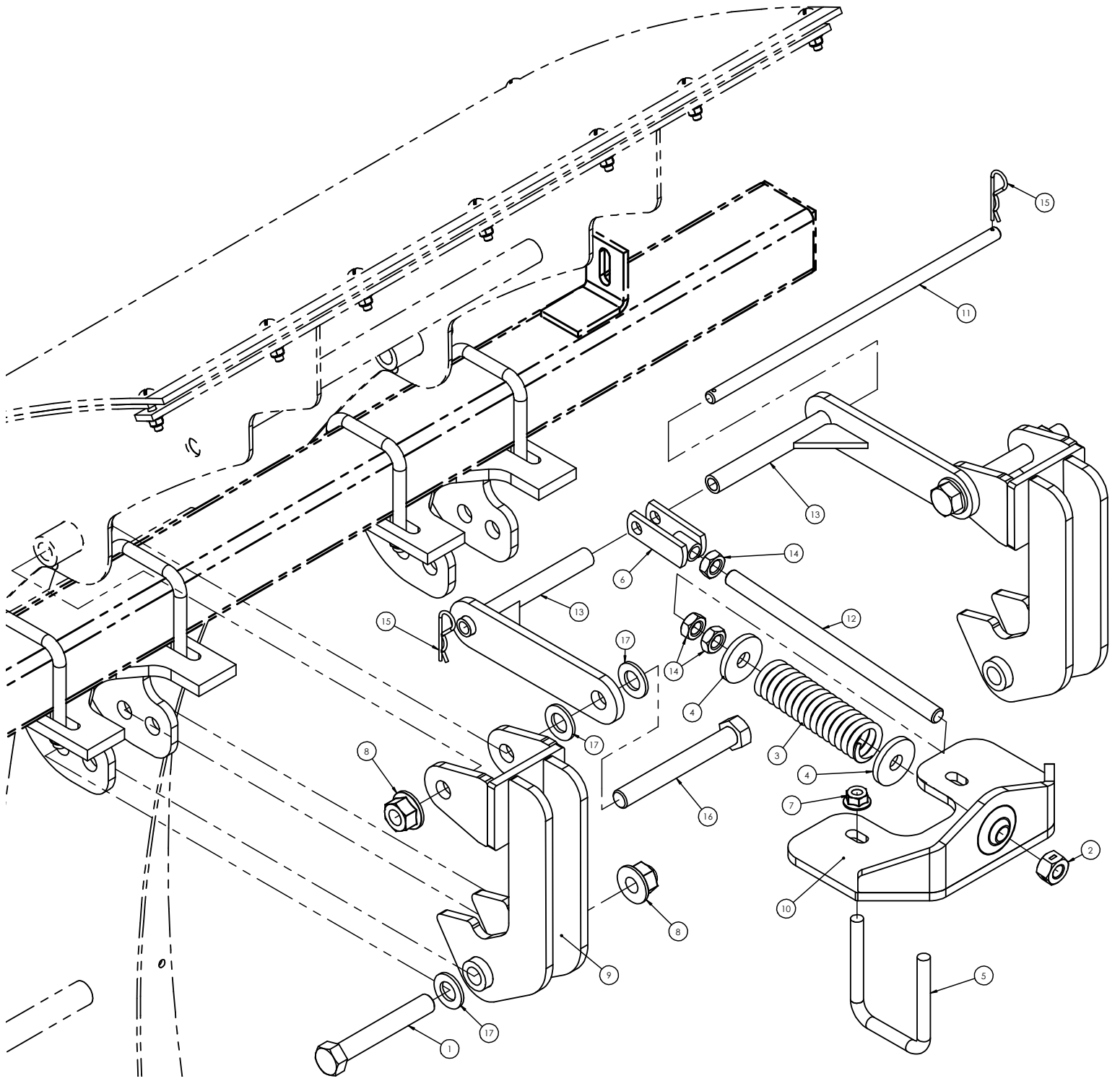


**Art's-Way Manufacturing Co., Inc.**

Model Kit 606650  
6812 Retainer Suspension Upgrade

Illustrated Parts List  
606610

Issued September 2014



ITEM NO.	PART NUMBER	DESCRIPTION	QTY.
1	023550	BOLT, HHCS 3/4-10 X 5"	2
2	038850	NUT, LOCK 5/8-11 GRA ZN HEX	1
3	231000	SPRING, COMPRESSION	1
4	340310	WASHER, FLAT	2
5	468370	BOLT, U 1/2-13 X 2.06 X 4.25	6
6	561870	YOKE WLDT, 5/8-11	1
7	600140	NUT, HFH NYLOC 1/2-13	12
8	600160	NUT, HFH TOPLOCK 3/4-10	4
9	606170	SHACKLE, WLDMNT	2
10	606180	SPRING MOUNT, WLDMNT	1
11	606280	PIVOT ROD, SPRING MOUNT	1
12	606290	ROD, THREADED 5/8-11	1
13	606630	ARM, WELDMENT	2
14	1121555	NUT, JAM 5/8-11	3
15	E580035	PIN, HAIR 1/8 X 2-3/8	2
16	G146711	BOLT, HHCS 3/4-10 X 6 GR8 ZN	2
17	I131017	WASHER, FLAT	6

- PRE-ASSEMBLE ITEMS 3, 6, 10, 11, 12, AND 13 USING HARDWARE SHOWN. THREAD ROD INTO YOKE SO THAT THE END IS FLUSH WITH THE INNER FACE OF THE THREADED SLEEVE. TIGHTEN ONE OF ITEM 14 AGAINST THE YOKE, LEAVE THE REMAINING JAM NUTS BACKED OFF. THREAD ITEM 2 ON SO AT LEAST 2 THREADS ARE SHOWING.
- SUPPORT RETAINER FROM UPPER ELEVATOR PIVOT WELDMENT USING RACHET STRAPS
- LOOSEN U-BOLTS HOLDING RETAINER MOUNTS, ADJUST SUPPORT TO TAKE THE WEIGHT OFF HE MOUNTS
- REMOVE THE RETAINER MOUNTS, DISCARD HARDWARE
- LOOSLY INSTALL THE SUB ASSEMBLY FROM STEP 1, CENTERING ITEM 10 ON THE CROSS TUBE
- LOOSLY INSTALL THE RETAINER MOUNTS, REMOVED IN STEP 4, ON THE UNDERSIDE OF THE CROSS TUBE WITH THE "U" SHAPED CUT TOWARD THE CENTER OF THE MACHINE
- LOOSLY INSTALL THE SHACKLES (ITEM 9) TO THE RETAINER AND SUSPENSION ARM (ITEM 13)
- LOOSLY INSTALL THE LOWER END OF THE SHACKLES TO THE RETAINER MOUNTS, USING THE HOLE CLOSEST TO THE RETAINER, TO ALIGN HOLES ADJUSTMENTS CAN BE MADE TO THE SUPPORT STRAPS HOLDING THE RETAINER. TIGHTENING ITEM 2 WILL ALSO HELP BRING THINGS INTO ALIGNMENT.
- TIGHTEN ALL HARDWARE, IF ADJUSTMENTS WERE MADE TO ITEM 2 LOOSEN THE NUT UNTIL 2 OR 3 THREADS ARE SHOWING.
- ADD SPRING TENSION BY TIGHTENING THE TWO LOOSE JAM NUTS (ITEM 14) DOWN ONTO ITEM 4. COMPRESS THE SPRING TO APPROX. 6". ADJUSTMENTS CAN BE MADE AS NEEDED.



## **Art's-Way Manufacturing Co., Inc. TECHNICAL MANUALS**

Manuals are available from your local dealer or Art's-Way Manufacturing Co., Inc. for the operation, service, and repair of your machine. For prompt convenient service, contact your local dealer for assistance in obtaining the manuals for your machine.

Your local dealer can expedite your order for operator manuals, illustrated parts catalogs, service manuals, and maintenance records.

Always give the Machine Name, Model, and Serial Number so your local dealer can provide the correct manuals for your machine.

Art's-Way Manufacturing Co., Inc. reserves the right to make improvements in design or changes in specifications at any time without incurring any obligation to install them on units previously sold.

Except as expressly authorized, no part of this manual may be reproduced, copied, transmitted, disseminated, downloaded or stored in any storage medium, for any purpose without the express prior written consent of Art's-Way Manufacturing Co., Inc.

**ART'S-WAY MANUFACTURING CO., INC.**

**HWY 9 WEST - PO Box 288**

**Armstrong, IA. 50514 U.S.A**

© Copyright 2012

ART'S-WAY MANUFACTURING CO., INC.

All Rights Reserved